

FOCUS

November 2007



THE FOUR VILLAGES MAGAZINE

EATON BRAY
EDLESBOROUGH

NORTHALL
DAGNALL



Christmas Menu
The White Horse
Eaton Bray
Tel: 01525 220231

Homemade Tomato & Basil Soup

Shredded Duck on Lettuce with a Plum Sauce

Crab & Crayfish Timbale

(V) Goat's Cheese & Sunblush Tomato Tart

Baked Field Mushrooms with Ham, Prawns & a Cheese Topping



Roast Turkey with Sage & Onion Stuffing

& Chipolata Sausage in Bacon

Chargrilled Lamb Cutlets on Dauphinoise Potatoes

with a Redcurrant Sauce (£2.50 supplement)

Ribeye Steak in a Port Wine Sauce

Chicken Stuffed with Asparagus & Mozzarella

& wrapped in Parma Ham

Fresh Salmon Supreme with a White Wine & Tarragon Cream Sauce

(V) Vegetable Nut Roast with Apricot & Goat's Cheese



Christmas Pudding with Brandy Sauce

Marmalade Bread & Butter Pudding

Chocolate Profiteroles

Morello Cherry Cheesecake

Charline Vanilla Caramel Ice Cream

Cheese & Biscuits



Coffee & Mince Pies

£23.95 per person

Edlesborough Autos

Walton End Garage, Pebblemoor, Edlesborough, Nr Dunstable, Bedfordshire LU6 2HZ

Telephone: 01525 222224 Facsimile: 01525 223113



MOT while-u-wait
All Vehicle Servicing and Maintenance
Accident Damage and Insurance Repairs
(Free Estimates)

Breakdown Recovery Service
Attended Service for Petrol and Diesel
Flo Gas Agent for all sizes of Bottled Gas
Smokeless and Household Coal
*The garage shop stocks all workshop consumables
and general goods for your daily requirements*

Opening Hours
Monday-Friday 7:30am - 7:00pm
Saturday 8:30am - 5:00pm



Carpet & Upholstery Cleaning

Professional & Local

All work guaranteed - not happy, don't pay

**Powerful equipment means drier much
quicker than other methods**

**100% Guaranteed no chemicals left in carpet
when dry therefore will not easily resoil
& perfectly safe for children & pets**

Recommendations account for 90% of my work

Absolutely no hard sell

Telephone Colin for a Free Quote

DEEP-CLEAN

01525 851 811

www.deep-cleaners.co.uk

Email: cbthomas@ntlworld.com

EDLESBOROUGH SURGERY 01525 221630

Cow Lane Edlesborough

**Dr M R Jones, Dr J R Bell,
Dr Stephanie Johnston, Dr Helena Verwey**

We offer a full range of health services at the surgery

EDLESBOROUGH PHARMACY 01525 223181

Pharmacist - Claire Davies

**Friendly, reliable professional service at the pharmacy
All doctors, dentists and hospital prescriptions dispensed
Professional advice always available**

Over the Counter Medicine

Special Orders on Request

A range of cosmetics/baby products/seasonal goods

Focus - The Four Village Magazine

Magazine Committee

Joint Editors: George Crutcher - 7 Summerleys, Eaton Bray 221637

Sally Siddons - 34 Wallace Drive, Eaton Bray 221733

Email: sallysid@hotmail.com

Dagnall Representative: Sue Cawdell - 10 Deans Meadow, Dagnall 01442 842200

Northall Representative: Derrick Bonfield - 'Poppyn', Eaton Bray Road 220013

Circulation Manager: John Plater - 41 Church Lane, Eaton Bray 221095

Treasurer: Ken Coates - 10 The Nurseries, Eaton Bray 220868

Advertising: Sally Siddons - 34 Wallace Drive, Eaton Bray 221733

Production Manager: Tracey Moren (Moren Associates Limited) 01525 229695

Copy for publication to the Editors or one of the following by the **10th of the month:**

Kevin Cabbage - 'Larums', Eaton Bray Road, Northall

Val Barrow - 3 Chestnut Close, Dagnall

Focus accepts no responsibility as to the accuracy or content of any advertising or articles published in 'this' magazine neither do they reflect the opinion of members of the Committee.

© Articles published in Focus may not be reproduced without permission.

**December Focus will be a joint issue for December & January.
Don't forget to send in your January entries by 10th December.**

Front Cover

The front cover painting is by courtesy of Edward Stamp of Stewkley taken from a new book entitled, 'Tis the Far Famous Vale, National Influences on the Vale of Aylesbury by Ken and Margaret Morley. Available from November in all good bookshops including The Book Castle, Dunstable, price £25.00.



Present

A Race Night

at Eaton Bray Hall

In aid of Hall Funds

on Friday 16th November

at 7.30pm (Doors open 7.15pm)

A Ploughman's Supper is included

Bring your own drinks

and glasses

Tickets £7.50

Tickets available from Hall

Trustees or

Graham Chappell phone 220883



POLICE SURGERY FOR YOUR COMMUNITY

EDLESBOROUGH, NORTHALL
& DAGNALL

THURSDAY 22ND NOVEMBER

7.00pm - 8.00pm

EDLESBOROUGH VILLAGE HALL

Please come along & discuss
your policing issues with us

Wing Neighbourhood

Policing Team

Further surgeries will be held in
2008. Please see later editions of
Focus for details

Village Diaries November 2007



Weekly

- Mon-Fri (term time) Eaton Bray Pre-school, Eaton Bray Village Hall, Cindy 07773 095624
- Mon-Fri (term time) Dagnall Under 5's, Dagnall Village Hall, 9.30-12 noon, Mrs Ann Tobin 07816 358342
- Mon-Fri (term time) Edlesborough Under 5's Pre-School, Edlesborough Memorial Hall, Sue Connor 01525 222739
- Mon-Thu (term time) Totternhoe Pre-school, mornings, Totternhoe Memorial Hall, Kay 07803 925254
- Mondays Pilates, 10.45am, St.Giles Church Hall, Totternhoe, Lisa: 01582 412426
- Mondays (term time) Mums & Tots Group, 1-2.30pm, Grace Community Church
- Tuesdays Yoga Classes, Northall Village Hall, 1.45-3.15pm 01525 377542
- Tuesdays Line Dancing, 1.30-3p.m., Eaton Bray Village Hall, Lyn Stubbs 220731
- Tuesdays Baby Cafe (Support for Breastfeeding mums), 10.15 - 11.45 am, Pitstone Memorial Hall
- Tuesdays FITKID, 6-7pm, Eaton Bray Village Hall, Caroline 08445 606432
- Tuesdays Totternhoe Baby & Toddler Group, 9.30-11.30am, Totternhoe Village Hall, 07986 730922
- Tuesdays Fortnightly Coffee Morning, Bring & Buy, Table Top Sale, 10-12noon, Salvation Army Hall, Booth Place, Eaton Bray
- Weds (term time) Eaton Bray Under 5's, 1.15-3pm Eaton Bray Village, Hall Cindy 01582 477568
- Wednesdays Chi Kung & Wu Chi classes, Coffee Tavern 11am - noon
- Wednesdays Pilates, 7.15pm, Northall Village Hall, Lisa: 01582 412426
- Thurs (term time) Baby & Toddlers Group, Dagnall Village Hall, 12:45 - 2:45pm (12:15 if bringing lunch) Contact Michelle Tel 01442 842 676
- Thursdays Yoga Classes, Northall Village Hall, 11.30am-1pm
- Thursdays Keep fit, 2pm, Eaton Bray Village Hall, Mrs Johnson 220304
- Thursdays Kfa Body Moves 40+, Fitness through movement, exercise & dance. 8-9pm, Edlesborough School, Contact Pat 01582 668735
- Thursdays Baby & Toddler Group, Salvation Army Hall, Booth Place, Eaton Bray, 9.30-11.30am
- Fridays SOCATOTS,12:45, Eaton Bray Village Hall, Daniel Walker 07968 778681
- Fridays (term time) The Venue for 8-12s @ Grace Community Church, 7.00-8.45 pm, Bruce Moulding 01525 221601
- Saturdays Jazzercise, Eaton Bray Village Hall, Angela Veryard, 715208

Monthly

- 1st Monday Eaton Bray Parish Council Meeting, 7.30pm, The Coffee Tavern
1st Monday Eaton Bray W.I. Meeting, 7.30pm, Eaton Bray Village Hall, Contact Sheila Beal on 01525 221185
1st & 3rd Tuesday Dunstable & District Orbit Club meet at Dunstable Rugby Club at 8pm. For details contact 01525 222441 or 01582 755147
2nd Tuesday Toddlers' Church, St Mary's, Eaton Bray, 2.00pm
2nd Tuesday Dunstable & District Local History Society meeting, 7.45pm, Methodist Church Hall, Dunstable (opposite Wilkinson)
2nd Tuesday Edlesborough W.I. Meeting, 7.30 pm, Edlesborough Memorial Hall
2nd Wednesday 8.15pm Healing Service in St Mary's Church
2nd Thursday CAMEO Coffee, tea & chat, 10am-12noon, Edlesborough Methodist Church
3rd Thursday Edlesborough Parish Council Meeting, 7.30pm, Memorial Hall
3rd Sunday Grace Community Church Service, 11am, all welcome, Bruce Moulding 01525 221601
3rd Sunday Lunch club 11.30 to 2.00pm, Eaton Bray Village Hall, Chris Hewitt 222288

Other Regular Events

- 9th Leukaemia Research Coffee Morning, 2 Dunstable Road, 10.30 am
13th Dagnall Over 60's, Village Hall, 2pm, Speaker Mrs Ann Parsons
14th & 28th Bingo, Dagnall Village Hall, 8pm
20th Dagnall Over 60's Visit to Kensworth Over 60's Club

One Off/Annual/Irregular Events

- 16th A Race Night, 7.30pm, Eaton Bray Hall, Tickets £7.50 220883
17th Christmas Fayre, Eaton Bray Village Hall, 12.30-2.30pm
22nd Thames Valley Police Surgery, Edlesborough Village Hall, 7-8pm
24th Christmas Fayre, Dagnall Village Hall, 12-2pm
27th Buds of May Winter 2007 Workshop, 7.30-9.30pm, Ivinghoe Aston Village Hall, £25, Book 01525 221920
27th Pampered Chef, 7pm, Dagnall Village Hall, £5, Tickets available from Dagnall Under 5's, Dagnall Village Hall, weekdays 9.30-12.00

Christmas Fair

St Mary's Church will be holding a Christmas Fair in Eaton Bray Hall on Saturday 17th November between 12.30 p.m. and 2.30 p.m.

You can enjoy a Ploughman's Lunch, buy a cake for tea, win a prize in the raffle and do some early Christmas shopping without leaving the village! This year we are also expecting a visit from Santa Claus so do bring the children along.

Any contributions for the chocolate tombola, cake stall, recycled presents stall or the raffle would be very welcome. Please contact Peter Bennett on 01525 221284.





Edlesborough Under 5's

Monday - Friday **9.15 am - 12.00 noon**
Tuesday & Thursday **12.45 pm - 3.15 pm**

"Edlesborough Under 5's provides good quality nursery education"

"Children come into the group happily, eager to take part in the activities"

"Children's creative skills are promoted very well through a stimulating range of opportunities"

These are just a few of the comments made in our fourth OFSTED Report (Sept 2004). The report reflects the high quality of learning on offer to all children at Edlesborough Under 5's and highlighted the quality of teaching by the staff. We are currently operating a waiting list for 2½ to 4½ year olds. If you would like to pop in for a look around, please phone Debbie on 07854 939226 between 9am - 12 noon, to arrange an appointment. A warm welcome awaits you.

**For registration details, or to place your child on the waiting list,
please phone Sue Pickering: Tel - 01525 222199.**

"We are an Equal Opportunities Employer"

www.edlesboroughunder5s.org.uk

PINSTripES

SPECIALISTS IN SIGNS & GRAPHICS

CAR BIKE & VAN GRAPHICS

SIGN BOARDS

LORRIES HORSEBOXES

SHOP SIGNS

WHEEL COVERS

AND

VEHICLE MAGNETICS

WINDOW DISPLAYS

VINYL TEXT & LOGOS

PRINTED STICKERS & PHOTOS

A BOARDS

LABLES

BUILDERS BOARDS

BANNERS-BUNTING-FLAGS

01525 220485

07973 167779



Quality Flooring
and Installation
at Affordable Prices

- ◆ **Laminate**
- ◆ **Real Wood**
- ◆ **Carpets**
- ◆ **Karndean Vinyl**

For a **FREE**, no obligation quote, please contact me, Michael Bishop,
on either number and I will be happy to visit you in your home.



Master Fitter

"Excellent service and a beautiful floor expertly installed. I would highly recommend Aspley Flooring" *S.Stillard, Edlesborough.*

"Your workmanship has created a beautiful floor, I shall have no hesitation in recommending you or using your services again" *A Satisfied Customer, Edlesborough.*

t: **01908 587332** m: **07977 575010**

30 Years Experience
Domestic & Commercial Security



- Burglar Alarms
- Redcare Monitored Systems
- Intercoms
- CCTV
- Access Systems
- Locks



CERTIFICATE NO. NAC/G/2113

Quality Installations – Competitive Prices
Insurance Approved Free Surveys

AAA SECURITY

01525 378222

Slicketts Lane, Edlesborough, LU6 2JD



The Netherlands was our chosen part of the North Sea route this year so leaving the floods at home we caught the ferry from Harwich to Hook of Holland. That the land is flat was the only aspect that I had confirmed, Holland is much more attractive than I had imagined. The route along the west coast of The Netherlands is typically traffic free high quality tracks through an expanse of sand dunes. These are interrupted by pleasant seaside villages, country parks, agricultural areas of grazing land, polders, bulb and flower fields. The northern part is quite different; it passes sparsely populated large polder areas, agriculture, cattle, sheep (lots!) enormous farms and charming villages. The Wadden Sea is not separated from the land by beaches and dunes but by dikes. Our first night we spent in Den Haag, then Harleem, Callansoog, De Corksdorp on the island of Texel, Harlingen, Holwerd, Usquert, Woldendorp, then a quick cycle to the German border to catch a train for two nights in Amsterdam. This was the easiest cycling I have ever done **and** it was wind assisted throughout.

Our night in Den Haag was not the best. It started to rain when we got off the ferry and we got extremely wet in the very long time it took us to find our hostel the other side of this large city.

For the highlights of our trip, I thought I would concentrate on one day, although very little cycling was done, it was an amazing one. We had stayed overnight at De Corksdorp on the island of Texel, having got the ferry from Den Helder. Our plan was to catch the ferry to one of the Frisian Islands, Vlieland a place for cycling, country walks, bird watching, and enjoying 12km of sandy beach. We then planned to cycle the length of this small island for an onward ferry to Harlingen. On checking out of our accommodation in De Corksdorp the lady said she was not sure if the little ferry takes bikes. I had done research and the guide books assured me that regular ferries run throughout the season – perhaps I had assumed they took bikes? Very anxious we cycled up to the small booking office on the dunes to enquire. A Rather abrupt lady in charge said, “no not taking bikes on this ferry, you will have to wait until 5 p.m. ferry”more anxiety....but all was well because they put on an extra ferry at 2 p.m. which would be taking bikes. Whilst waiting, we picnicked under blue skies amongst the sand dunes. The small ferry boat appeared but getting on it was quite a challenge. We had to push our bikes down a very high, extremely long, fragile looking walk way with two ropes at each side. Margaret, the friend I was with first, I followed, keeping my eyes on her and not on the drop either side, or looking through gaps in the planks! Safely on board, I had just parted with my bike for it to be secured when I realised, too late, I had not got my waterproof, well I got soaked, all 24 of us (and bikes) did. The highlight was yet to come. On arrival on Vlieland we were met by an enormous military type vehicle. Reinforced with a hearty Dutch breakfast we manhandled our bikes onto the vehicle with some difficulty as there were bikes of all descriptions, some with trailers. This huge machine drove 4 miles over an enormous expanse of white sand. All you could see was sand gleaming in the sun light, I had never been to a place like it. Onward we ploughed finally reaching the dunes. It was only after five or six strenuous attempts the vehicle managed to get up and over the top of the dune to drop us off for our leisurely cycle ride to the only settlement on the

island, Oost-Vlieland. Quickly there, we booked another much large ferry which would take us to Harlingen on the mainland in just under two hours. As this large ferry was departing we noticed nearly everyone waving, it turned out at this was an old local custom, people on shore/people departing everyone just waves, so we joined in! Harlingen is an ancient port which serves the Frisian Islands and is something of a centre for Dutch sailing barges. This was one of my favourite places, not just a tourist town: there's a fishing fleet, and small container port and a resurgent ceramics industry. After booking into our hotel and admiring the stained glass we relaxed with two large Heineken and soaked up the evening sun. It had been quite a day, one to remember.

Other things to say: the cycling was fantastic, it was so nice to see Dutch families cycling to the beach with little trailers containing their needs for the day, even a surf board or two. Signage on route: excellent, just a couple of times we were not sure and had to ask. Accommodation: we had a real mixture, three "Stay Okay" hostels, a couple of hotels and b&bs, all excellent. Dutch people: very friendly and extremely helpful. Dutch trains run on time and take bikes. Amsterdam: we cycled to our two hostels and from and to the Central Station. We had read an article about bicycle thefts in Amsterdam so being a little concerned, happily left them in secure storage, whilst we used the excellent tram system to see the sights.

Return journey was overnight ferry from Hook of Holland. 7.10 a.m. train from Harwich to Liverpool Street, a cycle ride to Euston, then train to Tring and home at 11 a.m. Very neat. Next year: Sweden.

Angela Feaviour

The North Sea Cycle Route is a circular cycling route on the coast of all countries bordering the North Sea. For more information visit: www.northsea-cycle.com

Any GURNEY Connection?

Born and brought up in Dunstable, little did I realise until very recently that one side of my family came from Eaton Bray and were in fact part of the GURNEY clan.

My great great grandfather Thomas STEVENS married Elizabeth GURNEY at Eaton Bray Parish Church in December 1849. Elizabeth was a local girl and in the 1841 census she was living at Church End, Eaton Bray with her parents – father Matthew (aged 40), mother Sarah (also 40) and her siblings Mary, William and Anne. When she married Thomas it looks like she had two children already, Naomi and Priscilla and by 1851 she, her two children and Thomas were living in the Comp and he was a shepherd. They also had three children together, Jesse, Sarah and Edward and it is Sarah STEVENS who is my great grandmother.

I then found the family had moved to Dunstable by 1861 and were living at the Rising Sun Public House in Edward Street.

I just wondered if there was anyone else who might be doing some family history work and had found that they have any connections with this branch of the GURNEY family – or even the STEVENS'. If so I would love to hear from you – I'm on 220816 or email jhockey@btconnect.com

<p>Edlesborough Parish Council Meetings 3rd Thursday of every month 7.30pm Memorial Hall Next meeting: Thurs 15 Nov 07</p>
--



YOUR ONE STOP SHOP FOR:

Hot Tubs/ Spas • Swimming Pools
Pool & Spa Chemicals • Splash Pools

AZURE POOLS & HOT TUBS LTD

Leighton Buzzard Garden Centre, Hockliffe Road, Leighton Buzzard.
Tel: 01525 854000 • www.hottubs4u.co.uk • www.azure-pools.co.uk

P. DYER ELECTRICAL

For all your Testing & Inspection needs

- *Re-wires*
- *Testing & Inspection*
- *Security Systems*
- *Security Lighting*
- *Decorative Lighting*
- *PAT Testing*
- *Fuse Boards*
- *Landlord Certificates*

All work guaranteed. Fast, friendly, reliable, local electricians.
For a free, no-obligation estimate, call Paul on:



Tel: 01525 222109
Mobile: 07850 682815



EDP

EDLESBOROUGH DENTAL PRACTICE

- ✓ Preventative Dentistry
- ✓ Dental Hygienist
- ✓ Cosmetic Dentistry
- ✓ Treatment For Snoring
- ✓ Implants

The very best in quality dental care

EDLESBOROUGH DENTAL PRACTICE
11 Cow Lane | Edlesborough | Dunstable | Bedfordshire LU6 2HT

01525 223175

www.edlesboroughdentist.co.uk



Mental capacity

The Mental Capacity Act 2005 (the Act) comes fully into force on 1 October. It introduces lasting powers of attorney, which enable an attorney to make decisions about a person's property and affairs, and/or the person's personal welfare. It will no longer be possible to create an enduring power of attorney on or after 1 October, although enduring powers of attorney created before this date remain valid. In addition to this, court appointed receivers will be known as deputies. The Act contains rules for working out when a person lacks the mental capacity to make a decision, and when someone else can make that decision on her or his behalf. It also enables people to decide to refuse medical treatment at some point in the future when they may lack the mental capacity to consent to or refuse that treatment. These decisions are known as advance decisions.

For more information contact the Citizens Advice Bureau, Grove House, High Street North, Dunstable. Tel: 01582 661384. Would you like to join our volunteers? Please contact the above number for more information on volunteering opportunities at Dunstable Bureau.

Edlesborough Parish Council (including Edlesborough Dagnall and Northall) News

Village Freighter Refuse — November Collection

The Village Freighter will be returning to the Parish villages as follows:

DAGNALL — Thursday 15th November 2007 7.30am until 11am

EDLESBOROUGH — 20th November 2007 7.30am until 11am

NORTHALL — Wednesday 21st November 2007 12noon until 3.30pm

Items the Freighter is not allowed to take were published in the Aug/Sept Focus

EDLESBOROUGH MEMORIAL HALL BOOKINGS

Beverly Sage is the new Bookings Secretary and enquiries should be made to her on 01525 229509

The Parish Council are very grateful to St. Mary's Carnival Committee 2007 for their very generous donation towards the Cemetery Access Project

The Parish Council agreed to support Safer Routes to School with funding for it's application for a grant to improve safety conditions outside Edlesborough School and to implement a safer route for pedestrian children and cyclists along the existing Ivinghoe Aston to Edlesborough bridleway.

Additional bollards would be placed outside the Memorial Hall.

A complaint has been forwarded to Bucks County Council concerning the problems with School buses from Dagnall and Edlesborough taking pupils to Wing and Aylesbury schools.

A letter of apology has been received following an incident occurring at a recent Parish Council meeting.

A new 'No Through Road' sign incorporating a No Through Road symbol is to be erected at Chapel Lane, Northall.

A new Lease has been drawn up between the Parish Council and Edlesborough Tennis Club.

Several Councillors had attended the recent Police Surgery together with 4

parishioners. The Parish Council were disappointed in the non attendance of more local parishioners. The next Police Surgery will be taking place on Thursday 22nd November between 7.00pm and 8.00pm at Edlesborough Memorial Hall.

E-mail: parish.council.clerk@edlesborough.gov.uk Website: www.edlesborough.gov.uk



Harvest Festival

Every year the children of Edlesborough School generously donate produce for the Harvest Festival Service. This arrives in various bags, boxes and baskets many of which have been beautifully arranged. These are then distributed along with poems, written by Year 6 to the more senior members of our community.

This has become a right of passage for our Year 6 children who really look forward to this event and undertake it very seriously. They always return with stories of the warm welcomes they receive.

However this is just the start of the event. Many of the people who receive the gifts send us wonderful 'Thank You' cards and letters. These teach all our children so much. The importance of saying 'Thank You', the special role they play in a community, the pleasure that their poems give. The letters are pinned up in the library for the children to read and enjoy.

In Edlesborough where the children are very fortunate to have so much it is important that we continue to teach them that it is often the little things in life that make the most impact.



Eaton Bray WI

Our president welcomed the members to the October meeting, and apologies were received from several members still enjoying late summer holidays.

A number of social events are on our calendar, starting with a harvest evening, the theme being 'Scarecrows'. This will be followed by a visit to Hitchin and a guided tour of the British School Museum.

After the business, we welcomed our guest speaker Ann Parsons who gave a very interesting and humorous talk entitled Royal Connections. Ann's father was a member of the late Queen Mothers' household, and her family moved around with him when the royal household travelled to Balmoral and Sandringham.

Ann spoke of her many happy memories of playing with the royal children and their friends.

She also recalled how much the London servants looked forward to going to the country estates, and what great fun they all had with parties and dances held in the village halls.

The Queen Mother enjoyed dancing and often came along to the dances. Her royal highness made a point of dancing with all the men servants!

Ann's memories gave us an insight into a less formal royal family than their public image.

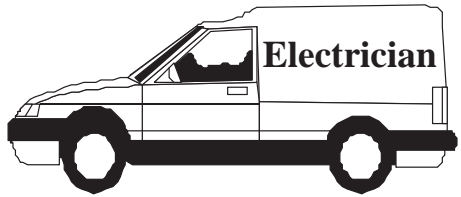
Our evening concluded looking at the royal memorabilia that Ann's father and family had been given over the 50 years he was in royal service.

Our next meeting is on Monday 5th November at 7.30 pm in Eaton Bray Village Hall friends and new members are always welcome. For more details. Call Sheila 221185.

M.J. BROUGHTON
QUALITY DECORATING
Interior and Exterior
 ALL WORK CARRIED OUT TO THE HIGHEST STANDARD
 For a free estimate with no obligation ring
01525 - 222764
 8 SUMMERLEYS, EDLESBOROUGH.

P.J. BRINKLOW

Electrical Contractor



**Most types of electrical
 work undertaken**

Tel; 01525 220469

Mob; 07860 781330

**43, Pebblemoor,
 Edlesborough**

Janes

Carpets and Flooring



We carry a wide range of
 Weaves, Twists & Natural Carpets Vinyl & Quick Step Laminate
 KARNDÉAN The warm alternative to WOOD & CERAMIC TILES

AFFORDABLE & COMPETITIVE PRICES

NO DEPOSIT

INVOICE ON COMPLETION

SAMPLE TAKE AWAY SERVICE

We are happy to visit you at your home For a FREE no obligation quote.

High Street Edlesborough Nr Dunstable Beds. LU6 2HS Tel: 01525 220208 www.janesltd.co.uk

CHARTERED ACCOUNTANT



01525 221676

**OPEN 7 DAYS / EVENINGS
FRIENDLY LOCAL SERVICE
COMPETITIVE FEES**

MIKE A. SUTCLIFFE

**213 CASTLE HILL ROAD
TOTTERNHOE, BEDS, LU6 2DA**

Lynwood Antique Restorations

With over 20 years experience in antique restoration.

Specialising in traditional Antique Restoration, French Polishing, Turning, Leathering and Upholstery

All Cabinet making undertaken

Trade or Private Welcome

Simon Lewis

T: 01525 222950

E: simon@lyncot.co.uk

Lynwood Cottage, Leighton Road, Northall



Patricia's Cuisine

Catering For All Occasions

- Buffets, Dinners •
- Christenings, Weddings, Funerals •
- Promotions & Business Lunches •

For Enquiries & Menu

Meadside Farm, 104 High Street,
Eaton Bray, Bedfordshire, LU6 2DP

Telephone: 01525 222174

BARRY CATO

MOTOR REPAIRS

*Servicing, repairs and
MOT's arranged*

Workshop at:

r/o Norfolk House Farm, Harling Road
Eaton Bray, Dunstable, Beds, LU6 1QY

Tel: 01525 221681 (workshop)

07836 650015 (mobile)

SPOTLESS

Domestic Cleaning Service

- * Weekly *
- * Fortnightly *
- * One-offs *

- Fully Insured
- Family Run Business
- Free In Home Quote
- References Available
- Window Cleaning
- Carpet Cleaning

Gary & Lorraine Ross

**Tel: 01296 580203
or 07796 406717**

Moore's

DUNSTABLE'S DEPARTMENT STORE
21-23 HIGH STREET SOUTH,
DUNSTABLE, BEDFORDSHIRE
TEL: 01582 662638
EMAIL: mooresd@globalnet.co.uk
www.mooresofdunstable.co.uk



**Blockpaving, Patio Specialists and
Groundwork undertaken**
Telephone 01582 704495
Mobile 07958 717248
Free Quotations

SOVEREIGN WILL & PROBATE

- ✓ Inheritance Tax avoidance
- ✓ The best provision for children

Wills can **double** a couple's inheritance tax free entitlement and **avoid over £120,000 tax**
(Includes anyone **widowed** in the past 2 years)

40%
inheritance tax
starts at
£300,000

01525 220 644

DAYTIME & EVENING
APPOINTMENTS

The UK's leading in-home Will writing service



Your Village

Estate Agents

The Complete Professional Property Service

Independently owned and established for over 30 years, fully staffed by experienced mature and professional people giving an expert and friendly service.

All village properties are on display and offered from our Dunstable and Eaton Bray/Edlesborough offices with advertising in Beds/Bucks/Herts and North London and via our excellent Website & Rightmove.

Move with the name you can trust.

65 Moor End, Eaton Bray

Tel: 01525 221313

www.densons.co.uk



GATES

Plumbing & Heating Ltd

Specialising in all types of
Plumbing, Gas & Oil Heating

We now offer **Solar Heating** as part of
our portfolio, please contact us for a free estimate

Tel: 01296 670445

Email: plumbing@gates100a.fsnet.co.uk

CORGI & OFTEC registered



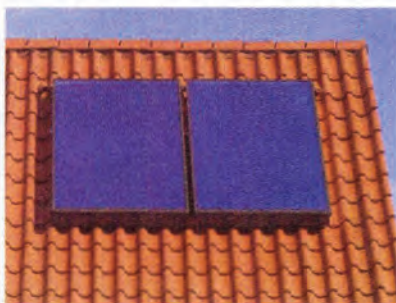
UNICORN WINDOWS LTD

*Quality and Service from
Your Local Company*

- Quality Windows, Doors, and Conservatories
- Internally glazed for high security
- High security locks on all windows, doors and conservatories
- Full 10 year insurance backed guarantee
- Specialist box sash replacement



SOLAR PANELS by UNICORN WINDOWS LTD



- Clean environmentally friendly - For all types of roof
- Extremely cost effective
- State of the art technology
- High quality materials guarantee durability and reliability
- Latest control technology

Call free on: **0800 092 5212**

Head Office and Factory: Unit 3 & 4 Youngs Ind. Est.
Stanbridge Road, Leighton Buzzard, Beds, LU7 4QB
Tel 01525 854272 sales@unicornwindows.co.uk



E&C GARDEN DESIGN

Garden Design, Amenity
& Horticultural Consultant

Chartered Surveyors



01525 220780

HALL FOR HIRE

- Bar & Kitchen
- Discount for Villagers
- Membership Available
- Club Bar Prices
- Family Events Every Month

**EATON BRAY
SPORTS & SOCIAL CLUB**

For Details phone 07709 725803



cardio



strength



stretch



DUNSTABLE CLASSES:

MON 7.45PM Northfields Sch

WED 7.45PM Queensbury Sch

TOTTERNHOE & EATONBRAY

THUR 9.30am St Giles Ch Hall

SAT 9.30am E B Village Hall

Info on above Tel: 01525 715208

Or for kids classes 07790236087

TRING CLASSES:

TUES 7.30 p.m. Goldfield Infants Sch

WED 9.30 a.m. Red Cross Hall

THURS 7.30 p.m. Grove Road Primary

Info on above Tel: 01525 371553 or go to

www.jazzercise.co.uk

jazzercise®

FREE CLASS WITH THIS AD!



Realise
your **child's**
potential

Maths and English After-School Programmes

Kumon programmes:

- work at a pace tailored to your child's needs
- give their confidence a real boost
- develop invaluable study habits and concentration
- complement the school curriculum

Contact your local Instructor today.

Christina Wade
DUNSTABLE
STUDY CENTRE
**01525
222505**

KUMON
Every child can shine

kumon.co.uk

All Plumbing Repairs and Installations

Domestic & Commercial

- Dripping taps
- Sinks
- Overflows
- Cylinders & Tanks
- Immersion heaters
- Showers & Bathrooms etc
- Leaks, Bursts & Blockages
- Insurance work undertaken



City and Guilds
Qualified Engineer



No call-out charge, free estimates

D. NICHOLSON PLUMBER

01525 872335

Mobile: 07976 975604

Glebe Farm Cottage, Dunstable Rd, Toddington

Eaton Bray with Edlesborough Parish News

Vicar: Canon Malcolm Grant

The Vicarage, 11 High Street, Eaton Bray - Tel: 01525 220261

Hon. Assistant Priest: The Revd John Heffer

35 Pebblemoor, Edlesborough - Tel: 01525 220618

Recently I was trying to get round Parliament Square in Westminster just after the unveiling of the statue of Nelson Mandela, himself one of the great heroes of the twentieth century, and the delay gave me a chance to look again at the statues erected above the west door of Westminster Abbey in 1998 - ten figures of Christian martyrs of the twentieth century, drawn from every continent and different denominations. They remind us of the cost of being true to one's beliefs, and of the continuing persecution of those who dare to stand up for what is right.

November is a month of remembrance, inspired by the Church's remembrance of all its unnamed saints and all the faithful departed at the beginning of the month. The First World War added Armistice Day, which after the Second World War gave place to Remembrance Sunday, when we remember with respect and gratitude all who died in those great conflicts and in the lesser wars of ensuing years.

The Christian Martyrs of the Twentieth Century commemorated outside Westminster Abbey challenge us to expand our remembrance to include all who have made great sacrifices for the benefit of others. Each one represents many other victims of tyranny, fanaticism, dictatorship, prejudice and brutality. They include Janani Luwum, Archbishop of Uganda, murdered in 1977 by the troops of Idi Amin (perhaps by the President himself) for his opposition to the unchecked violence of the security forces, and Archbishop Oscar Romero, Archbishop of San Salvador, who stood out against the oppression of the poor and the abuse of human rights by a repressive government. He was shot at the altar in 1980 while saying Mass. There are also the human rights leader, Martin Luther King, assassinated in Memphis in 1968, the Chinese pastor Wang Zhiming, executed in front of a mass rally of over 10,000 people during the Cultural Revolution, the Grand Duchess Elizabeth, a member of the Russian royal family, who renounced her status to take religious vows and care for orphans, but who was murdered by the revolutionaries, Dietrich Bonhoeffer, one of the leaders of the German Christians who refused to make an accommodation with the Nazi regime, and Esther John (Qamar Zia), an Indian Christian whose Muslim family had to flee to Pakistan at partition, and who was brutally murdered in 1960 because her faith was seen as a threat to the established order of her community.

One of the most inspiring of these heroes is the Polish Franciscan priest, Maximilian Kolbe, a prisoner in Auschwitz. When a prisoner from his block escaped, the commandant ordered that ten prisoners should be locked in an airtight cell as a reprisal and left to die. One of those selected begged to be spared because he had a wife and children, and Fr Kolbe stepped forward to take his place.

"Greater love hath no man than this, that a man lay down his life for his friends" – words of Jesus that we shall recall on Remembrance Sunday. The statues above the abbey door illustrate them powerfully. In November, old comrades will think again of the sacrifice of those who died alongside them in war, but we can all ponder the vision

of the future that inspired them and countless others who have striven, often against enormous odds and at great personal cost, to make our world a fairer, better place. True remembrance should motivate all of us to renewed efforts to preserve all that is good in our society and change what is bad, and increase our prayers and activity for the coming of God's Kingdom.

MALCOLM

From the Parish Registers

Baptisms – *“Brought to new birth in the family of the Church”*

23 September Sophie Jane Broomhead
Alexander Thomas Sherwood

Weddings – *“To love and to cherish till death us do part”*

22 September Leonard Richard Lane & Kathleen Mary Fry
13 October Matthew Charles Newbigging & Abigail Claire Banks

Funerals – *“Grant them, O Lord, eternal rest”*

18 September Betty Mary Tibbles of High Street, Edlesborough
11 October Vera Hannah May Davies of Wallace Drive, Eaton Bray



Services at St Mary's Church

SUNDAYS: 8.00am – The Eucharist

10.00am – PARISH SUNG EUCHARIST (with Sunday School).

On Second Sunday of each month:

10.00am – WORSHIP FOR EVERYONE – a less formal service
with Holy Communion

WEEK-DAYS: Tuesday: 7.30am - Eucharist

2.00pm (2nd Tuesday) - Toddlers' Church

Wednesday: 9.30am - Eucharist

8.15pm (2nd Wednesday) – Healing Service

Thursday: 7.30pm - Eucharist

(on 2nd Thursday at All Saints', Dagnall)

EVERYONE WELCOME AT THESE SERVICES

REMEMBERING OUR LOVED ONES

A SPECIAL SERVICE OF
REMEMBRANCE OF ALL THE FAITHFUL
DEPARTED ON FRIDAY, 2 NOVEMBER
8.00pm AT ST MARY'S, EATON BRAY
EVERYONE WELCOME

North Chilterns Group

Advent Evensong
Sunday 2nd December
4.00 p.m.

Kensworth Church
Everyone Welcome

Remembrance Day

The Act of Remembrance this year will be held at the War Memorial in
Edlesborough at 10.50 a.m.

Please note that the morning service at St Mary's Eaton Bray
will be at the earlier time of 9.30 a.m.

Dunstable

47 Edward Street,
Dunstable,
Bedfordshire LU6 1HE

WORKTOP SPECIALISTS

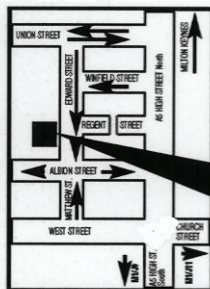


TOILET CUBICLES

CUT AND EDGE SERVICE
POST-FORMED WORKTOPS



Email: sales@dunstablelaminates.co.uk
www.dunstablelaminates.co.uk
www.toiletcubicles.co.uk



WE ARE HERE

Send your
specifications,
drawings or sketch
by fax or email.

Fax: 01582 608227

Tel: 01582 668973

Computer Support & Services

- ☑ After-sales services and support
- ☑ Windows troubleshooting
- ☑ Upgrades and repairs
- ☑ Computer hardware & software sales
- ☑ Internet & email assistance
- ☑ Network installations
- ☑ Web site design
- ☑ Basic & individual tuition
- ☑ Home visits

Computamation Services Ltd

☎ Daytime: 01525 378939

☎ Evening: 01525 261381

email: john@computamation.co.uk

in good spirits



mobile bars

tell/fax: 01525 220443 mob: 07702 712856

ellie@ingoodspirits.co.uk www.ingoodspirits.co.uk

WASHING MACHINE REPAIRS

ALSO
DISHWASHERS, TUMBLE DRIERS,
AND ELECTRIC COOKERS



Call
ANDERSON D.R.S.

01582 665764

www.andersondrs.co.uk
SALES AND RENTALS AVAILABLE

Buy Direct From Our
Own Farm

Master Card

VISA

From **Ivinghoe Turf**

- Commercial & Domestic
- Small Orders Welcome
- Bark, Grass Seed & Fertiliser
- Laying Service
- Discount on Larger Orders
- Screened & Blended Topsoil
- All Year Availability
- Forklift Delivery Available



ROLAWN®
Approved Rolawn
Stockist

Family firm farming since 1949

ALL AREAS

Freephone :

0800 043 5061

www.ivinghoeturf.com

The Bungalow, Vicarage Farm, Ivinghoe, Leighton Buzzard

AARON FENCING

ALL TYPES OF DOMESTIC & COMMERCIAL
FENCING & DECKING WORK UNDERTAKEN

- FREE ESTIMATES
- FULLY QUALIFIED & INSURED
- PERSONAL SERVICE AT COMPETITIVE PRICES

TEL: 01582 665779

MOBILE: 07798 927272

7 STATION ROAD, DUNSTABLE, LU5 4HS

Curtains 4 u

Jan Robinson

Phone/Fax: 01442 843454
Mobile: 0777 9029140



**Curtains with a
certain Flair**

Very competitive rates for
all your soft furnishing needs.
Hand finished curtains a speciality
Alterations and own fabric work undertaken

Garden Care

of Slapton

Traditional Garden Maintenance
and Landscape Services

Free Estimates & Advice

Telephone Eaton Bray 221454

Mobile 078302 86837

BURDETT BUILDERS

General Builders
Plumbing • Heating
& Electrical Engineers
Specialists in Hardwood Joinery

01525 222793

A J WARING CARPENTRY SERVICES

Local, experienced, & Fully Qualified.

All Carpentry Jobs Undertaken

Contact now to avoid disappointment.

Phone/Fax 01525 240691

E-mail andrew.waring2@virgin.net

ARC Contract Services Ltd

- Wallpapering and painting
- Laminate Flooring • Coving
- Tiling • Bathroom installations



Quality work at affordable prices
Insurance work undertaken
All work guaranteed for 5 years
Public liability insurance cover

FOR FREE PROFESSIONAL QUOTATION

**CONTACT ADRIAN ON: 01582 539179 or
07789 730580**

★ Star Performers ★

Modern/ Pop, Ballet, Tap,
Musical Theatre & Drama

Northall Village Hall &
Forster Institute Linslade

A fun way for all children aged 4-16
to keep fit & Healthy

For an information pack call

07843 272791

Places are limited

Toddington Fishery

Hearn Farm Cottage, Park Road, Toddington

- ◆ Carp
- ◆ Cat Fish
- ◆ Tench
- ◆ Bream
- ◆ Roach
- ◆ Rudd
- ◆ Perch
- ◆ Chub
- ◆ Cruisan Carp

For a good day's fishing in peaceful surroundings

For Details Phone: 07855 321781

www.toddingtonfisheries.co.uk



WHERE CUSTOMER CARE AND SERVICE STARTS CARPETS - VINYL WOOD FLOORING SPECIALISTS

**LARGE RANGE OF REMNANTS AND
DISCONTINUED RANGES AT FACTORY PRICES**

SHOWROOM NOW OPEN AT

**21C ICKNIELD WAY FARM, TRING RD, DUNSTABLE, BEDS, LU6 2JX
WHERE WE HAVE A SELECTION OF IGOE BEDROOM FURNITURE
AND PINE FURNITURE ON SHOW**

**To arrange our free shop at home service & view a wide range of
samples in the comfort of your own home call:
FREE PHONE 0800 0850593 OR 01582 699273**

**SHOW ROOM OPEN BETWEEN 9AM-5.30PM MONDAY TO FRIDAY
MOST MAJOR CREDIT CARDS TAKEN**

TMS Chauffeur

Services

Luton	£18.00
Heathrow T1,2,3	£45.00
Heathrow T4	£50.00
Gatwick	£70.00
Stansted	£60.00

**London, Theatres, Stations,
Ports. Distance no object.**

**For a professional reliable
service call:**

01582 667710

WILL KIMBERLEY GARDEN SERVICES

TEL/FAX (01442) 255784

- **Grass Cutting regular or one off / lawn treatments**
- **Hedge cutting / Shrub trimming**
- **Overgrown gardens cleared**
- **Autumn / Winter tidy ups**
- **Fences erected and repaired**
- **Fruit tree pruning / tree lopping**
- **Leaf clearing / gutters cleared**
- **Patio / deck cleaning**

**IN FACT ANY JOB IN
THE GARDEN**

Susan Todhunter FCCA

offers a friendly and personalised
comprehensive service covering:

Accountancy - Taxation

- Self Assessment -

for

- Individuals -

- Partnerships -

- Limited Companies -

Advice from a qualified professional
at an affordable fee

For a free initial consultation at
your home or workplace, phone:

01908 508181 or 01234 290333

Bayler Wood Associates Ltd
Chartered Certified Accountants

DELLS

UPVC WINDOWS
CONSERVATORIES

FACIAS and SOFFITS

RING ANDY - 01442 826359

MOBILE - 0795 738 6239

FREE ADVICE • QUOTATIONS

TV VIDEO AUDIO REPAIRS

BOB SMITH

EATON BRAY 221722

**ALL WORK GUARANTEED
FREE ESTIMATES**

**GARDEN
EATON BRAY
SCENE**

THE RYE
EATON BRAY
BEDS LU6 2BQ

TEL 01525 220104
FAX 01525 222077

GARDEN SCENE FOR:

TOP QUALITY GARDEN PLANTS,
TERRACOTTA AND GLAZED POTS,
COMPOSTS AND FERTILIZERS,
GARDEN ORNAMENTS AND
SO MUCH MUCH MORE!"

** ALL TOP QUALITY
AT LOWEST PRICES **

Logs and Coal now being sold



OPEN 7 DAYS
MON- SAT 9 - 5.30
SUN 10 - 4.30

JOIN OUR FREE
GARDENERS REWARD CLUB
FOR EVEN BETTER VALUE

James B Chadburn

Fine Antique clocks & Barometers
Specialist in repairs & restorations

Movements / Casework / Silvering.
Clock & Barometer parts sold.
Valuations & Clock finding service
Quality clocks & Barometers
Bought & sold.



Telephone 01525 221165 Mobile 07790 000629
E-mail: jbchadburn@lineone.net

MISTY DOUBLE GLAZING ?

DID YOU KNOW WE CAN REPLACE JUST THE GLASS PANEL

NOT THE WHOLE WINDOW FRAME

MAKING THE REPAIR MUCH, MUCH CHEAPER!

WE CAN EVEN TRANSFORM THE LOOK OF YOUR HOUSE BY CHANGING THE PLAIN GLASS PANELS TO LEADED LIGHT OR WHITE GEORGIAN PANELS WITHOUT REPLACING THE WINDOW FRAMES.

WE ALSO REPLACE BROKEN GLASS • HANDLES • HINGES & LOCKS.

FOR A FREE NO OBLIGATION QUOTATION CALL:

QUALITY GLAZING SERVICES

01525 876808 (OFFICE)

07850 734517 (MOBILE)



REVIVE

HOLISTIC THERAPY

Holistic therapies are concerned with treatment through massage, manipulation and relaxation. They are not only treatments for one physical ailment or one part of the body, but also treat the person as a whole.

Ideal for today's stressful lifestyles.

Treatments include:

Aromatherapy Massage

Indian Head Massage

Reflexology

Reiki

Crystal Therapy

Also... Manicure / Pedicure

New: Reiki courses are now available. Why not learn how to become a Reiki Master so that you can help yourself as well as others.

Vouchers available, so why not treat a loved one or friend as well as yourself.

For more information or to book an appointment call Kate Meredith IHHT, RGN, on 01525221380

Established over 10 Years

Duncan Tomblin TREE SURGEON

Forestry Contractor • Tree Felling
Crown Reduction & Thinnings
Deadwooding • Hedge Cutting
Stump Grinding • Site Clearance
Private Agriculture Fencing Contractor
Chipper & Stump Grinding Hire
Digger Hire

FULL PUBLIC LIABILITY INSURANCE
FREE ESTIMATES

'The Best Choice For Your Tree'

TEL: (01525) 221946

MOBILE: (07802) 410728

12 Greenways, Eaton Bray, Beds



Tring & District NCT

Nearly New Sale

Exciting things for you to buy at fantastic prices!

Toys, books, nursery equipment, maternity clothes and clothes for children aged 0-7 years

Sat, 17th November

10.30 - 12 noon All Welcome

(NCT members with cards 10am entry)

Tring School, Mortimer Hill, Tring

Tring and District NCT Nearly New Sale in association with Hyatt Studios

To sell or help call 0870 421 4733

Registered Charity No: 801395

EXCHANGE & MART

FOR SALE

Yamaha DD-55c digital drum machine: 7 touch sensitive pads
£120 ono

Mid-sleeper bed: solid antique pine with pull-out desk and ladder (H 122cm x W 101 cm x L 198cm)
£50 ono

Wooden cabin/tree house: freestanding, with ladder and wavy slide
£50 ono
TEL: 01525 222930

FOR SALE

Monico Disability Scooter
very good condition
£200 ONO
Can deliver

Please phone 01582 696388

WANTED

Wheelchair

Please phone 220847

HOLIDAY LETS

TO LET

Apartment for Skiing in beautiful Alpine resort of Schladming, Austria

1 week available in March 2008
2 bedroom, self catering, sleeps 6
Complex includes swimming pool
Sauna, gym and restaurant.
Access to 4 skiing mountains

Phone E.B 220868

Menorca – Cala'n Porter

Light, airy, comfortably furnished apartment; balconies front and rear; great location centre village; sleeps 4; one double bedroom, one twin-bedded room; large communal pool in private grounds.

Tel: 01525 852368/07914 011241
for brochure/details

Langham Barns

Fancy a break in Lincolnshire?
Barns newly converted to high standard
In rural location, 3 miles from coast

Tel 01507 490313
Mob 07717452610

Anarita Near Paphos Cyprus

Recently built luxury villa, 10 mins from Paphos town and 10 mins from airport

- Three double/twin bedrooms
- Two bathrooms
- Fully fitted kitchen
- Air-con
- Lounge/diner with TV/DVD player
- Own pool and garden

Beautifully situated overlooking sea and short walk into Anarita village which has taverna, supermarket and bar.

Rates vary according to season (£350-£750). Available all year.

Contact Nicky 07980735955 or email nicky.corehealth@virgin.net

HOLIDAY LETS

Luxury Holiday let in Orlando - Florida

Privately owned luxury 5 bedroom villa with own screened pool just 15 minutes from Walt Disney World Resort.

Sleeps up to 12 people comfortably. The villa is furnished & fully equipped to a high standard.

*5 Bedrooms *3 Bathrooms *Dining Room
*Kitchen *Sitting Room *Screened Pool Area
*Air Conditioning *Private Pool (heated on request)
*Double Garage *Washer / Dryer
*Dishwasher *Microwave *Kitchenware
*Linen *TV *Telephone *Cot & High Chair

Located in a residential community just off US192 (junction 27) which means that most of Central Florida's theme parks and attractions can be reached within 15 - 20 minutes. Also numerous Championship Golf Courses local.

There is a supermarket, pizza delivery shop, bank, post office & petrol station all conveniently located within the development.

For Further Information Please Contact Us On

01525 220879

Graham & Karen Howard

Marbella - Holiday Let

Five star **Designer Furnished** luxurious apartments located literally on the beach in San Pedro, just 2 km from Puerto Banus.

Designer Furnishings

**Luxury Kitchens with Granite Worktops
Marbled Bathrooms with Jacuzzi Bath
Award Winning Landscaped Gardens
Swimming Pool and Waterfalls**

Video Entry System

**Underground Parking with Lift
Large Terraces and Garden Area
Choice of 2 bed ground floor and**

NEW for 2005

A brand new 3 bed first floor apartment

To view internal photographs and for more information please see

<http://bahiaibeach.mysite.freemove.com>

or feel free to contact us on

01525 222753

Michelle and Kevin Reddington

Sheplegh Court Nr Dartmouth, South Devon

Lovely two bedroomed apartment in country house set in 30 acres of gardens, woods and parkland. Facilities available include:

- Heated outdoor swimming pool with sun terrace and barbecue area (summer only)
- Conservatory overlooking the gardens and parklands
- All weather tennis court.
- Snooker room with full size table
- Small indoor pool, jacuzzi and sauna

Secluded position on outskirts of award winning village yet within 3 miles of beaches and Dartmouth Golf and Country Club. Available for weekly letting or for three plus days out of season.

**For further details please telephone
01525 220957 evenings and
weekends**

Costa Calida Spain Isla Plana

Isla Plana is a small village 2km across the bay from Puerto de Mazarron

The village has several bars & restaurants, a village shop, bakers, butchers & pharmacy.

Mazarron is a fascinating old town backed by rugged landscape of mountains. The town has a good selection of shops, restaurants & Sunday market.

Luxury beach front apartment

with stunning views across the bay from large private gated terrace, 2 bed, 2 bathrooms, all mod cons, air con & heating.

Large communal pool, separate children's pool & play area. Tennis court, video entry, underground parking.

Rent £250-£550 per week

Murcia airport 1 hour

Contact Mandy 01525 874803

Act, sing and dance at Stagecoach



AN HOUR TO ACT



AN HOUR TO DANCE



AN HOUR TO SING

STAGECOACH TEACHES children to act, sing and dance. We help them to stand well and move freely, express themselves more clearly, gain confidence and self-esteem—skills they learn for life. Schools open for three

hours at weekends during normal term time.

There is no audition—students need only to be enthusiastic and aged between 4 and 16.

For a Prospectus and more details please contact Wendy

Ashman at Stagecoach
Leighton Buzzard on
01525 222715



STAGECOACH
THEATRE ARTS SCHOOLS

www.stagecoach.co.uk



**J. LYDON
and Sons**

Building & Ground Work
Contractors

Mini Digger &
Dumper Hire

With or without driver



FREE Estimates

Phone: 01525 877234

Mobile: 07855 321781

Email: lydonj6@aol.com

**Thinking about a new
lawn, patio or complete
garden makeover?**

**For a free, no obligation
quote phone:**



**Tel: 01296 660628
Mob: 07976 227785**

**Garden Design
Lawns • Patios • Driveways**



Edlesborough Tennis Club – Final Day 2007

It was one of the hottest days of the year for our Finals Day on 15th September so it was imperative that the marquee was erected to give the spectators necessary shelter from the strong sun - easier said than done! There was much scratching of the heads, many differently sized poles lying around and not enough volunteers – come back David and Ben Brown, all is forgiven! The LTA Umpires duly arrived having travelled from as far as Dorset and Berkshire all for the love of tennis, a small fee at the end of the day but mostly for our blueberry muffins for breakfast and our superb gourmet ploughmans lunch. The first two finals started at 10 o'clock, one of which turned out to be our match of the day – Sam Scott versus James Kight in the U16 Boys – a very competitive and closely-fought three set match. The heat actually got to a couple of our players but the crowd were now in luck - the tent was finally erected!! It was good to see some new people in the finals this year and there was even a request for a ladies veteran competition next year to encourage more entries. Leon, our club coach, was in action again in a repeat of last year's Mens Singles final. Sam is getting closer - so be very afraid next year Leon! Another very close match was the Mixed Doubles which could have gone either way. Congratulations to all our winners and runner-ups! A huge thank you to everybody, committee members and all who helped to make it a very successful day. Special thanks also to Ben and Jane who ran the BBQ in the evening while the trophy presentation took place.

RESULTS IN FULL

Mens Singles	Leon Leenders	bt	Sam Scott	6-3 6-1
Mens Doubles	Miles Emmett & Leon Leenders	bt	Ziggy Bis & Bruce Thomson	6-1 6-4
Ladies Doubles	Margaret Bis & Kimberly Squire	bt	Carolyn Kight & Lindsey Rigby	6-0 6-1
Mixed Doubles	Ziggy Bis & Margaret Bis	bt	Miles Emmett & Kimberly Squire	7-5 7-6
Veteran Mens Singles	Andy Everson	bt	David Kight	6-3 7-5
U16 Boys Singles	Sam Scott	bt	James Kight	3-6 6-2 6-3
U16 Girls Singles	Abigail Kight	bt	Kim Squire	0-6 6-4 1-2 (retired)
U16 Mixed Doubles	James Kight & Abigail Kight	bt	Charles Morris & Alex Morris	6-0 6-1
U14 Boys Singles	Jack Coates	bt	Chris Wright	6-2 6-0
U12 Boys Singles	Will Sanders	bt	Scott Mercer	6-2 6-0
U10 Girls Singles	Anna Henderson	bt	Charlotte Meredith	6-1
U10 Boys Singles	Jordan Davis	bt	Matthew Glover	6-3

Thank You

A big thank you to everyone who supported my Phoenix Cards Fundraiser in aid of 'The World's Biggest Coffee Morning' on Friday 28th September. We raised a fantastic £373.00 in aid of Macmillan Cancer Care. Thanks also to Janes and Buds of May for donating prizes for the raffle.

If anyone missed it and would like to see a Phoenix Cards Brochure please contact Beverly Sage on 01525 229509.

Wills & Home Ownership: *It is not just about Inheritance Tax*

Here I outline the often compelling case for couples to switch from joint to shared ownership (**Tenancy in Common**) of the home. Tenancy in Common enables each owner's share to be bequeathed separately, e.g. The first to dies share can be placed in trust for the children's future benefit.

MAKE THE BEST PROVISION FOR CHILDREN. After the first death, the house's shared ownership is between the survivor and trustees nominated by the survivor, which can include themselves and their children. The trust is typically for the benefit of the children and is arranged so that the surviving partner has life possession of the house. It means that no matter what the survivor does - spend the estate, enter a new relationship, move home or enter a care home - the children are assured of receiving the first to dies share of the home on the survivor's death, or earlier if that suits everybody involved.

AVOID A HOUSE SALE TO COVER LONG TERM CARE FEES. When there is a shared interest in a house it is very difficult for any authority to enforce a sale of the house to pay for long term care fees.

COMMON LAW COUPLES. Shared ownership is often appropriate to common law house owners, notably where the relationship is young and or the contribution to the purchase was unequal. Tenancy in Common does not have to be 50/50, nor need it be confined to 2 shares. Whether house ownership is joint or shared, common law partners must each have a Will to ensure their wishes are fulfilled, including any involving children, as the Rules of Intestacy do not recognise common law relationships at all.

For those with concerns about inheritance tax.

INHERITANCE TAX: If you are a couple and are married, in a civil partnership or are intending to be either, and you own your home jointly, when the first of you dies the house and all jointly owned assets will be inherited by the survivor. This may sound OK, but it means that the survivor's estate will be increased substantially, as will any 40% inheritance tax liability. AND the deceased partner's inheritance tax free entitlement will be lost!

To avoid this situation, couples need to change house ownership to ownership in Tenancy in Common, AND have a Discretionary Will trust facility structured into their Wills. This will avoid up to £120,000 in inheritance tax today and double their inheritance tax free entitlement to £600,000, a figure that increases annually.

Wills and their trusts are complex and must be set up correctly. It is essential that you obtain expert guidance on all the options available to you, ideally in the privacy of your home, and have your Will prepared by specialist Law Society regulated solicitors. Sovereign Will & Probate Services Ltd provide this service locally for a very competitive fee.

**SOVEREIGN WILL &
PROBATE SERVICES LTD**
01525 220644

Eaton Bray Cricket Club 100 Club - October 2007

No 28 Eaton Bray Sports & Social Club £25

No 130 Jill Bunker £10

Eaton Bray Cricket Club is kindly sponsored by
F.A.Hawkins & M & M Properties

I'm Dreaming of a super-Santa letter for Christmas!



Santa comes in secret, Santa comes in the night, Santa comes to all the good children. But how does he know how good your little one has been this year? There is only one way you can make sure your child is on super-Santa's "good and deserving" list rather than his "naughty and nasty" list – and that is by telling him!

Super-Santa loves getting letters – and even better super-Santa loves sending letters! Obviously even Super-Santa cannot write to every good child in the world (that would just be ridiculous!) He will write though to all the good children in the four villages (and even further afield!) because we have in this little part of the world a special super-Santa letterbox staffed by the super-Elves.

All you have to do is fill in the special super-form telling super-Santa the who, what, where, when and how about the child and super-Santa will send them a special letter reassuring them that he knows where they will be on Christmas morning, that he knows they don't have a chimney, that he won't forget Rover the Dog and that he will have a nice bottle of gin for granny.

To get a super-Santa letter all you have to do is collect one from the super-Elves in the villages – they can be collected from the Post Office in Eaton Bray and from lots of special places, give the super-Elves a ring on 01525 220201! Or even better email super-Santa for a form (his email is super.santa@talktalk.net).

Once you have a form just answer all the questions and return the form to 96a High Street, Eaton Bray (between the butchers and the post-office) along with £2 which super-Santa and the super-Elves will donate to Eaton Bray Village Hall. Please return the forms in unmarked envelopes as the super-Elves have little Elves of their own!

Friends of St. Mary's Eaton Bray

The monthly Coffee Mornings continue to prove popular and the October event raised a further £116 towards the cost of preserving our 13th century Church. This brings the total to date to over £350 and our thanks go to all of you for your support. We hope you agree that the preservation of the St Mary's building is important to the village community, so please do come along to one of our Coffee Mornings (the next is on November 3rd between 10.30 and noon) or to one of our major events which will be advertised in future editions of Focus.

Your Friends Committee



FAMILY SING-A-LONG

Traditional Christmas Carols

*Sing all the old favourites, then
enjoy a drink and a mince pie.
(No service, just singing.)*

Friday, 21st December 2007

6.30pm

St Mary's Church, Eaton Bray

Tickets from Sharon Stilliard

01525 222283

**or Edlesborough Post Office
or on the door.**

Numbers limited!

Adult £3.00, Child £1.00,

Family £7.50

**Friends of St Mary's - preserving the
fabric of our local history**

Eaton Bray Lower School
Home School Association



Christmas Fair 2007



Saturday 1st December
12.00 – 3.00pm

All proceeds towards our
new nursery building

Dunstable Salvation Army
presents



christmas at the Grove

With
Stephen Yalden—Xylophonist
St. George's School
Larkrise Lower School
The Children's Drama Academy
& Special Guests

Sunday 2 December at 6 pm
All Seats £7.50

Tickets available from the
Grove Theatre Box Office
Tel: 01582 602080



Proceeds to go to Local Charities


Friends Of Edlesborough School

CHRISTMAS MARKET

Join us at our traditional Christmas Market
outside the school on Friday 7th December from 5-7pm

Let our fabulous choir get you into the Christmas spirit!

Visit Santa, have a go on the tombola, enjoy mulled wine,
roast chestnuts, hot dogs and candy floss

Lots of stalls full of perfect gifts for Christmas

We look forward to seeing you there!

DO YOU LIKE COOKING?

Then come and enjoy a fundraising evening with

The Pampered Chef!

At Dagnall Village Hall

Tuesday 27th November

Doors open 7:00pm

£5.00 per ticket to include:

Jacket potato & filling/glass of wine/chance to win a £10 Pampered Chef voucher



The Pampered Chef is a company who supply quality kitchen tools that make life in the kitchen simpler, quicker and a bit more exciting! Etta Stobs-Stobart is an Independent Pampered Chef Consultant. She will be showing us some exciting, easy recipes. You can see, test and buy some of the kitchen tools, then taste the food!

Tickets available from Dagnall Under Fives, Dagnall Village Hall, Weekdays 9:30 – 12:00. All profit to go to Dagnall Under Fives. Registered Charity No. 1026304

Friends of Dagnall School

Christmas Fayre



Saturday 24th November

12-2pm

Dagnall Village Hall

**Raffle, Tombola, crafts,
refreshments, cake stall
Children's activities, books,
toys etc.**

Christmas Fayre

*Eaton Bray Village Hall
on Saturday 17th November
12.30 - 2.30pm*

*Stalls, raffle, games,
children's stall,
ploughmen's lunches*

*Admission 50p,
includes tea or coffee & biscuits*

*In aid of:
St Mary's Church Funds*

Buds of May

WINTER 2007 WORKSHOP

Date: Tuesday 27th November

Time: 7.30 pm – 9.30 pm

Venue: Ivinghoe Aston Village Hall

Cost: £25.00

Come and create a beautiful modern arrangement in a vase/container. All sundry materials and flowers are provided and included in the cost.

Refreshments will be provided.

Spaces are limited so book early.

Booking forms available from Buds of May or by calling Sam on

01525 221920.

Highlights of Minutes of the Eaton Bray Parish Council Meeting Held on 1st October 2007 at 7.30 p.m.

Public Forum

The council were asked again about the Flagpole. Cllr Marriage stated this may be erected in the Church Yard. Cllr Marriage to advise Mr Willis.

Chairman's comments and correspondence

The following items have been received:

A letter from Eaton Bray Lower School confirming Sue Hounslow, Headteacher, would like to take up our offer of attending our November meeting to request funding for new nursery building. Also a new School Council has been elected and they would like to meet again with the Parish Council.

Invite from South Beds for Planning Training on 4 October.

Letter of Introduction from Laurent Martial new Community Development Officer, Rural Areas.

Email from Viv Dady detailing crime statistics.

Letter from Kay Lichfield.

D Granger contract due for renewal soon, passed to GP Committee.

Youth Opportunity/Capital Fund passed to GP Committee.

Replacement play mobiles, passed to GP Committee for recommendations to PC.

Chairman advised he received call Inspector Steve Barrett would attend in place of Viv Dady.

Police Representative:

Inspector Steve Barrett introduced himself as being responsible for Leighton Buzzard and surrounding rural areas. He manages our community officers. They are here to provide a service and he is aware of EBPC issues. He is confident he has the right people doing the job and stressed how important community policing is. Cllr Marriage expressed concerns of staff leaving with no real local knowledge handover, Steve Barrett advised new "village profiles" being created so when officer leaves the knowledge remains for passing on to new officer.

Cllr Heyland requested the Wellhead area is not forgotten about. Steve Barrett to task Viv Dady with meeting Cllr Heyland. Steve Barrett also advising Viv Dady we would like the problem of speeding within the village addressed.

General Purposes Report:

- Skateboarding – Cllr Gallagher to liaise with Cllr Crace
- Traffic Calming – signs going up in October
- Mill End Close – Cllr Beal to consult with D Granger re ransom strip.
- Registered Keyholder Scheme – Clerk to write to resident concerned.
- Town & Parish Highway Representative Scheme – Cllr Marriage is point of contact
- Byelaws and Villages Noticeboards – Byelaw now agreed and relevant forms to be completed and returned to Government for seal. Noticeboards – Cllr Beal advised GP Committee recommended purchasing 3 small boards and 2 sets of posts.
- EB Lions Goalposts – phone vote agreed by Cllrs Conner, Heyland and Windmill
- Allotments – notice and rent letters sent. GP asked PC for budget of £160 to

purchase lawnmower. Unanimously agreed. Cllr Marriage to progress.

Mill End Close

- Fencing – clerk to arrange meeting with Aaron Fencing
- Cllr Brand expressed concern over certain behaviour and graffiti at Mill End close
- Cllr Brand advised he has communication from 11 years ago. Cllr Brand to provide photocopies for GP Meeting on 16 October
- Rubbish – the P3 Committee along with John Hopwood to clear this away.

Cemetery

Cllr Heyland expressed concerns over food being left in cemetery. Cllr Conner to display A4 laminated sign on gate stating no food to be left in cemetery.

The tarmac path will be laid late October/Early November

Trees Adjacent to Church

Meeting to be arranged with Cllr Marriage, Cllr Pearson and D Granger Landscapes.

Village Signpost

Cllr Marriage to consider how to move this. Cllr Pearson to think about moving it with his tractor.

Clerk

The clerk advised the Audit for year ending March 2007 has been signed off. The annual playground equipment inspection will be carried out on Thursday 4 October.

Planning

The following planning application was considered:

SB-TP-07-1048 20 Park Lane, Eaton Bray, Erection of single storey extension.

No objections

Items for the November agenda to be requested no later than Friday 26 October 2007.

Next meeting to be held at 7.30 at the Coffee Tavern on **Tuesday 6 November 2007**.

The Parish Clerk can be contacted by email

to: clerk@ebpc.co.uk.

The Salvation Army, Booth Place Weekly Activities

Sunday

Sunday School 9.45-10.45am

Morning Service 11.00am

Evening Service 6.00pm

Sunday Evening (1st and 3rd each month)

Youth Group (age 12+) 7.45-9.00pm

Monday

Junior Club (age 8+) 6.30-7.45pm

Wednesday

Home League (Ladies Meeting) 2.30pm

Thursday

Baby and Toddler Group 9.30-11.30am

Thursday Evening

Young Ladies Fellowship 7.45pm

(last Thursday in every month)

Eaton Bray Parish Council Meetings

1st Monday of every month

7.30pm The Coffee Tavern

Next Meeting: Tue 6th Nov 07



Christmas Coffee Morning

Sat 8 December

All Saints' Church Dagnall

from 10.30 am

In aid of Iain Rennie Hospice at Home

Friends of St Mary's – Why Another Charity?

What does St Mary's Church, Eaton Bray mean to you? Maybe services on Sunday morning, "churchy people", singing hymns, saying prayers. Nothing to do with you perhaps?.

But wait a minute – there's a wealth of history waiting to be discovered – for example, two large oak and iron thatching hooks, to drag burning thatch from cottages in the days before the Fire Service, a font as old as the church itself, and even, strangely, non-matching pillars!

St Mary's Church, Eaton Bray was built in the early 13th century. Over the years, it's needed some help to stay standing – when it was about 250 years old, it was practically rebuilt – and that was 600 YEARS AGO! The church is built of local stone from Totternhoe. It is a chalk-like stone, which is easy to carve, but when it rains, or is very windy, the stone wears away quite easily.

So what we, the Friends of St Mary's, want to do is encourage people like you to help us make sure it stays standing for many more years – which of course is going to cost money. There are already several charities fund-raising for the church, but most of them involve people who go to church regularly. We are trying to involve people who may rarely visit church, but who like the fact that it's "just there" – which it won't be if we don't look after it.

We're not asking you to give money for nothing – we are organizing a series of events, which we hope will be fun, so you'll really want to come! The first one is going to be a Family Christmas Sing-A-Long at 6.30pm on Friday 21st December – plenty of us love singing Christmas Carols, but not everyone is sure they want to go to a church service too. So here's an alternative - singing and no service - and we'll even throw in a drink and a mince pie!

Look out for posters and ads around the village – you can get tickets from Mrs Stilliard (01525 222283), from Edlesborough Post Office, or on the door as long as there's room! Happy singing!

And for more information about the history of the church, check out the Virtual Tour on this fantastic website!

www.stmaryseatonbray.org.uk/About-Our-Church

Eaton Bray Methodist Church

Our November Lunches will be served on Saturday 10th from 12.00 noon until 1.30pm. The proceeds from the lunch are to be given to Laura, one of our Junior Church members, who is raising funds for a World Challenge Expedition to Borneo which she is to make in July 2008. Do join us and enjoy a hot lunch and help Laura with her project.

Our Christmas Lunches will be on Saturday December 1st, a full Christmas meal with dessert and coffee/ tea will cost just £7.00. Tickets will be available from Graham Carter at our November Lunch or please phone 01525 220742 from 11th of November. So that we can serve everyone efficiently we are to have a number of sittings starting from 12.00 noon. There will also be a few festive stalls for your seasonal purchases and our chosen charity for this event will be Foundation Rwanda.

**PUERTO BANUS
MARBELLA
SPAIN**



Recently built luxury 3 bedroom, 2 bathroom apartment approx 1 mile from centre of this well known Spanish marina. 45 mins easy driving from Malaga airport, served by Easyjet, Monarch etc.

Facilities include all mod cons including air-con, satellite TV, fully equipped kitchen, swimming pools, excellent clubhouse and tennis courts. Many golf courses and all weather bowling greens nearby. Climate makes this ideal for holidays throughout the year. Rates vary according to season (£300 - £750)

For a brochure and details call Peter or Celia on **01525 220173** or email hpkilfoyle@aol.com



Bellows Mill

*Attractive Accommodation
in Idyllic Surroundings
Telephone: 01525 220548*

a la carte Restaurant

**Lunch 12.30 - 2.30 pm
Thursday to Sunday**

**Dinner 7 - 9 pm
Wednesday to Saturday**

**Booking Essential
Telephone 01525 229649**

Email: reservations@bellowsmill.co.uk
Website: www.bellowsmill.co.uk

Surgery Now open 7 Days a week

*HPC Registered
CHIROPODIST & PODIATRIST*

*Est. 1992
Johnstons Ltd*
23 Upper George Street Luton LU1 2RD

*Telephone for appointment
07981 749038*

Central Luton surgery & home visits locally

R.J.O'CONNELL BUILDING SERVICES

**EXTENSIONS, PATIOS,
DRIVEWAYS, ROOF REPAIRS
AND PROFESSIONAL
DECORATING SERVICE**

**TEL: 01296 681323
MOB: 07855 236726**

*Painting/Decorating Curtain Rails
Kitchen Fitting Tiling Shelving/Flat Packs*

YOU need LITTLE JOBS if



Shelves scare you, flat pack frustrates you
or mowing doesn't move you,
you need someone to **Do It for You**

For your General
Home Maintenance needs

**Contact Carl Bird on 01582 703039
or Mobile 07773 230055**

*Floor Laying Gutter Cleaning Fencing
Loft Boarding Gardening etc.*



Edlesborough W.I.

At our September meeting we were really happy to welcome back Joyce Gwynn-Jones after a long absence due to illness. Chris Yates was thanked for holding the recent coffee morning, when £180 had been raised, and Megan Howells for arranging a craft day.

We were treated to a return visit from Margaret and Paula, who run the Ark Wildlife Hospital. These two ladies do fantastic work caring for wild animals, and all on a voluntary basis. Most of the animals and birds need help due to injuries. Margaret and Paula care for them as long as they need help and then, hopefully, return them to the wild. The latter part of the treatment often reduces the two of them to tears, they admit!! They deal with a fantastic number of creatures, and have had to learn as they went along as they could not find literature dealing with that kind of animal care. They are on call at all times, either travelling to pick up the animals or taking them in at home. They do an amazing amount of work with wildlife, and obviously love their work. Of course, it can be quite costly, and Margaret and Paula are always very grateful for donations of money or animal food from the public. Paula makes and sells cards, and they give talks to raise money for the Ark Wildlife Hospital.

We heard about some very amusing situations the ladies have experienced. It must help them to have such an obvious sense of humour. Margaret and Paula are two ladies truly dedicated to caring for wildlife when help is needed. It is heart-warming to meet two such special people.

Our Birthday Dinner again took place at Dunstable Downs Golf Club. As before, an excellent meal was served. To round off the evening, a talented vocal group from Milton Keynes provided the entertainment. It was a thoroughly enjoyable occasion.

Val Harris

Mothers' Union – Eaton Bray with Edlesborough

Summer is the time for outings, and the July meeting was planned accordingly with a trip to the Cotswold villages, but the devastating floods in that area prompted a quick change of plan to a visit to the beautiful city of Cambridge.

In September a 'craft afternoon' was held when Audrey Reynolds demonstrated and then encouraged the making of small gift boxes – a piece of card, a pencil, scissors, determination – and a new skill happily acquired with a good deal of amusement along the way.

In October it was the turn of this Branch to host the annual Mothers' Union Overseas Service which was attended by members from the Priory Church of St Peter, Dunstable, St. George's Toddington, All Saints Leighton Buzzard and our own members. The banners of all the churches – and that of St. Mary's Edlesborough – were processed through the Church at the beginning and end of the service, with the address given by Mrs. Shirley Dodgshon, Speaker in the Diocese of St. Albans, on the overseas work carried out by the Mothers' Union. The visitors and members then enjoyed afternoon tea together.

Meetings are held on the second Wednesday of each month at 2.p.m. in the Coffee Tavern and visitors will be very welcome.



And to your right...the auditions for the most glamorous granny
(W.I. outing to Westminster, probably 1960)

**Dunstable & District
Local History Society**

Tuesday 13th November, 7.45pm
*'Edmund Wingate of Harlington,
Mathematician & Tutor to a Queen'*
By the Vicar of Harlington the Rev.
Stephen Williams
Methodist Church Hall, Dunstable



*Piano, Cello &
Theory of Music*

*Tuition from beginners to
advanced standard.*

*Vacancies available for daytime & evening
lessons (beginner adults very welcome).*



Contact:
Jane Lodge (PGCE MUS B HONS)
Telephone 01525 222803

Stepping Out

(the comedy with two left feet!)

Front Row will be holding open auditions for a production of *Stepping Out* by Richard Harris, to be performed on 17-19th April 2008.

Introduction and first rehearsal will be held on Sunday 25 November 2007 at 4.00 pm, followed by auditions the following Sunday.

Ladies will be required to learn a short tap dance and perform an acting audition. Over 18s only please.

For more information, please call Barbara Morton on 01525 220535.

Stuart Ball

**Ceramic Wall & Floor
Tiling Specialist**

Over 24 yrs Experience



**City and Guilds
of London Institute**

Tiles supplied or Labour Only

**For a reliable service call
your Local Tiler**

Eaton Bray 229381

N.D.S.

General Building & Plumbing

(Established over 15 years)

- Extensions - Loft & Garage conversions etc.
- Kitchens & Bathrooms fitted
- Installer of PVCu guttering, soffits & fascia boards
- Roofing • Patios & Block Paving

Tel: 01525 221470

Mobile: 07941 563424

FREE ESTIMATES

...

NO JOB TOO SMALL

Christopher
PALLET



Chartered Surveyors - Valuers - Estate Agents

Now firmly established in the villages of Eaton Bray & Edlesborough, Christopher Pallet is independently owned and run by Branch partners Colin & Linda who offer a friendly, professional, caring approach to the often stressful process of house moving.

3 Summerleys,
Edlesborough, LU6 2HR
Tel: 01525 222333

www.christopherpallet.com

www. **DRIVESTYLE VANS** .co.uk

Now you can buy our used vans directly via our website.



LOW COST VAN & TRUCK HIRE

You Can't  Our Vans

Dunstable
London Road
01582 600465
LU6 3DH

Milton Keynes
Wolverton Railway Station
01908 319777
MK12 STN

Flitwick
High Street
01525 715000
MK45 1DU

SEW SOFT interiors



- ❖ Handmade Curtains and Valences
- ❖ Roman, Venetian, Vertical and Roller blinds, Cushions and Upholstery
- ❖ Tracks and Poles
- ❖ Everything beautifully made and fitted to the highest standards
- ❖ Exceptional personal service in your home, taking care of all the details, reducing your stress
- ❖ You can use your own or choose from a range of the latest fabrics as well as the more traditional favourites

Call me
Sue Hawkins on Whipsnade
(01582) 873358

A.P Welding

Motor Repairs & Welding Services

Free collection & delivery

cambelts, diesel, petrol

MOT's arranged

established over 20 yrs

Unit 6

81 Leighton Road

Stanbridge, nr

Leighton Buzzard

call

01525 211707

07986033428



FLORIST

*Inspirations
by Christine*

Bouquets, Floral Arrangements & Sympathy Tributes at competitive prices. Local Delivery

For a truly personal service contact me on

Christine 07801 844885





DIGITAL & ANALOGUE

TV & FM Radio Aerials
Satellite Installations
Extra TV & Satellite Points

FREE ESTIMATES

☎ 01525 852912

☎ 07710 429678

HAT TRICKS

*Weddings • Ascot • Special Occasions
Hats to Hire • Hats to Buy*

*Your own hat trimmed
to co-ordinate with your outfit.*

Telephone 01582 873822



WESTROPE BROS.

LAWN MOWER SERVICES

ALL TYPES GARDEN MOWERS SERVICED

THE RYE, EATON BRAY

Tel: Eaton Bray 220587

RD ELECTRICAL

**Specialising in all types of Electrical and Air
Conditioning installations including**

- LED Lighting – indoor and Outdoor
 - Garden & Patio lighting
- Scene setting – programmable dimmers
 - Re-wires
 - Security Lighting
- Kitchen and Bathroom specialist lighting & wiring
 - Testing and inspection
- Air conditioning throughout your home

**FULLY INSURED AND PART P QUALIFIED
NAPIT Registered.**

**Call Richard Ellison on 07932 759680
or 01525 221475**

116 High St, Edlesborough, Bucks, LU6 2ER

MOT TEST CENTRE

ROEBUCK GARAGE
HIGH STREET
EATON BRAY
220385

McTimoney CHIROPRACTIC



Margie Craib BSc BHSI DC AMC MMCA
Human and Animal Treatments

Ashridge Farm, Ringshall, Berkhamsted, Herts HP4 1ND
Telephone: (01442) 842729

General Chiropractic Council Registration No. 293



Moren Associates Limited

Newsletter Creation & Editing
Book Typesetting
Presentations
Typing
Document Reformatting
Spreadsheets
Adverts

Poster, Flyer & Leaflet Creation
Basic Web Creation/Maintenance
and more...

Tel: 01525 229695

Email: enquiries@morenassociates.co.uk

www.morenassociates.co.uk

ADRIENNE'S PRIVATE HIRE

Call for a **FREE** quotation
Book early to avoid disappointment
Very competitive prices

Airport Transfers
& Private Hire

07980 039715

Our executive Cars, 6 seater Minibuses and
lady driver are all available



GRASS ROOTS

GARDEN MAINTENANCE

Including

TREE SURGERY
SELECTION, SUPPLY &
PLANTING OF TREES,
SHRUBS & HEDGES.

(Fully insured)

Tel: BRIAN McMAHON
NCH (Arb)

EATON BRAY 221960



**Rose
Cottage
Interiors**
*for Quality
Hand Finished
Curtains*

Soft Furnishing, Interior Design
& Upholstery Service
Fabrics available

Handmade Curtain Specialist
Swags & Tails ● Pelmetts ●
Valances ● Tie-Backs
Clients own fabric welcome

Jane Euston • Rose Cottage
Northall Road • Eaton Bray
Tel/Fax: 01525 221034

THE COMPLETE BUILDING SERVICE

S.M. REILLY & SON

Established 1987

GENERAL BUILDERS

Extension Specialists

Tel: 01525 221740

Mobile: 07970 637511

Plastic Fascia & Soffit – Double Glazing
Windows – Doors - Conservatories
Decorating - Drives - Porches
Barn conversions - Roofing



Tel

01525 222145

Mobile

07971 559185

Lee Hutt

Heating and Plumbing Services

FREE ESTIMATES GIVEN

NO CALL OUT CHARGE

ALL WORK UNDERTAKEN

INSTALLATION, REPAIRS

NO JOB TOO SMALL

DOMESTIC & COMMERCIAL

J.M.C. PEST CONTROL

Wasps, Ants, Fleas, Cockroaches
Flies, Rats or Mice dealt with
professionally and efficiently.

All work guaranteed

Unbeatable Service • Prompt & Discreet
Very Competitive Prices.

Wasp Nest £39 • Ants from £45

Mobile: 07973 407027

Business: 01582 471766

St Judes Clinic

26 Lake Street, Leighton Buzzard
Beds LU7 1RX

Physiotherapists

Chiropodist, Podiatrist

Reflexologist, Acupuncturist

Women's Health Service

Your local health Professionals

Practice Principal

Moira D'Arcy MCSP

Tel: 01525 377751

Member of
The Organisation of
Chartered
Physiotherapists in
Private Practice



Ring Garry

01582 477568

Mobile

07949 118011

**Fence Panels • Blockpaving
Shingle Drives • Paths • Slabs
Steps • Gardenwalls**

**New Patios • Relaying
Soak Aways • Drainage
Free estimates or advice**

References

Trading Faces



*Unisex
Hair & Beauty Salon
and Chiropody Surgery
(HPC Registered)*

*Open 11am til Late
01525 229111*

G.R. Davis LCG

Honeywick Works, Eaton Bray
Cabinet Maker • Carpenter • Joiner

House Interiors

Handmade Kitchens

Can also supply and fit Crown Imperial
kitchens, wardrobes and desks

Home: 01582 600086

Mobile: 07759 856566

D & E HINES

High-Class Butchers

Quality Beef, Pork & Lamb

Grade A Poultry

BBQ & Sausage Speciality

Renowned for 'Bunkers Sausages'

Telephone: 01525 220413

CLEANING SERVICES

- GREAT OUTDOORS & IN -

*THE LOCAL COMPANY THAT CAN CARRY OUT
ALL OF YOUR CLEANING NEEDS!*

PRESSURE WASHING

- BLOCK PAVING & PATTERN
IMPRINTED CONCRETE (PIC)
REFURBISHED
- DRIVEWAYS/PATIOS/PATHS
- WALLS / FENCES
- CONSERVATORIES - HAND
CLEANED (INSIDE / OUT)
- GRAFFITI REMOVAL

INTERIOR CLEANING

- OFFICES & HOUSES
- BUILDERS CLEANS
- PRE - POST LET
- CARPETS & UPHOLSTERY
(ALL STAFF PROCHEM TRAINED)
- HARD FLOORS
REFURBISHED

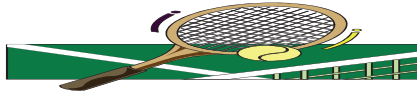
0800 298 5883

FOR MORE INFORMATION VIEW OUR WEBSITE

www.greatoutdoorsandin.co.uk

37 Oldhill, SW Dunstable





Eaton Bray Lawn Tennis Club

Another mammoth month for EBLTC: Our third court is painted and in use, our club Final's day saw some amazing wins, a joint Quiz night with the Village hall committee raised over £700 for the club, and our membership has risen again to almost 150, the highest ever in our 19 year history. That's now one member for every 17 villagers, so yes we are slowly taking over the village and at this rate we aim for world domination by next summer (if we get one). We might need a bigger clubhouse though, and I hope Hines can ramp up to supply that many burgers for our barbecues.

The sun shone brightly on our club Final's day, the culmination of several months of knock-out rounds, and the aforementioned barbecue sizzled succulently as once more our 48 menu options were hungrily devoured by players and supporters alike. I'm not sure that Darren Kerins should have had 3 burgers and a hotdog before going on court to play his Men's singles final, but clearly the calories counted as he beat Kevin Todd to take his 10th singles title and incredibly his 20th title overall including 5 men's doubles and 5 mixed doubles over the years. Kevin took revenge later though, winning his 7th Men's Doubles title when he partnered Peter Hill to overcome Darren and Martin Clarke. Jenny Baines closed in on Darren's total by defeating Rebecca Garrard in the Ladies Singles to take her 11th title, and in so doing matched the previous club record for a lady held by Jenny Moore. Jenny's husband Wayne has 12 titles and is 2nd overall in the club. In the Ladies Doubles Jane Cross and Val Abercrombie got the better of Jane Wigley and Danielle Tansley to take their 'title totals' to 8 and 4 respectively, whilst in the final senior match, the Mixed Doubles, Jane Cross made it 9 titles and Peter Hill claimed his 2nd by taking victory over Janet Hale and Simon Mitchener.

We also enjoyed 2 fascinating Junior competitions; the Under 10s culminated in Isaac Gordon just overcoming Jacob Shooter to take the cup. In the Over 10s, William Peck narrowly beat Alison Lowe in a closely fought match; definitely 2 potential stars for the future. I wonder if one of them will eventually overtake Darren's total of 20 titles? Not if I get there before them, but then I still need my first and I haven't entered for about 5 years and I don't have a forehand and I'm 35 years older than them but where there's hope there's a way. Oh did I mention my weight?

The Quiz night held jointly with the Village Hall committee was another resounding success with 155 people organised into strangely named teams, competing against one another to answer peculiar questions such as 'what is sturnutation'? and 'name the land-locked countries of South America'? The answers got progressively harder as the evening progressed on an exponential scale with the amount of 'bring your own drink' consumed. By round 8 after a wholesome paté and salad dinner, most of my team had trouble even seeing the quizmaster let alone understanding the questions, and we even got 'what time is news at ten?' wrong, and nobody knew 'in the 1976 Irish sheepdog trials, how many dogs were found guilty'? Nonetheless, we came a credible 9th equal (out of 10 I think) so went home happy, not surprising based on the empties we left in

the recycling bag. Oh and apparently the answers to the above were ‘Sneezing’, ‘Bolivia’, ‘Paraguay’, ‘10pm’ and ‘all of them’, but not necessarily in that order.

Finally we’d like to thank the Village Fete committee for taking pity on us after our over-easy ‘tennis ball through-the-hole’ stall (and all my subsequent moaning) and donating £100 to the club. Thank you, it was much appreciated. We’ll spend it on some decent prizes for next time, and a new box with a smaller hole. Or bigger balls, or possibly all three. Or maybe we’ll all just go to the pub.

For any further information about the club, including when we get together for our social tennis sessions up at the School Lane courts, or our various activities, please call either Chairman Ross Bagni on 01525 221411, Coach Nick Boys on 07810 832774, or if they’re all out and I’m not ensconced in a major training programme to win my first club title, me, Andy Cross, on 01582 477114.

Quiz Question - What Animal Lives in a Holt?

Yes, on Friday 5th October, 171 people sat comfortably in Eaton Bray Village Hall to hear the Super Quizmaster, Keith Blackburn, ask that very question. We all sat and thought! Was it a beaver, was it a badger – no it’s an otter!

At this event, the fourth joint effort organised by Eaton Bray Tennis Club and the Village Hall Fund Raising Committee, we raised a staggering £1,400.00, which was split equally between the two groups.

The Tennis Club have three newly re-surfaced courts and the Village Hall nice new toilets! Well, from Monday 8th October they did. Unfortunately, despite everyone’s best efforts they were not completed until 48 hours after the quiz. However, they are really nice, so do go and try them out next time you are in the Hall!

The Village Hall has also benefited from two Grants. The 1st was £5000 from South Beds Village Hall Grant Scheme and this has gone towards the toilets. The 2nd Grant of £37,000 from WREN has been promised towards our next project. This will be the re-furbishing of the kitchen, meeting room and the creation of a new disabled toilet, along with replacing the roofing above these areas. This will cost approximately £50,000, so you can see that we still need to raise more than £12,000 by next June. This project will complete the essential refurbishments to bring our Hall into the 21st Century.

So please keep supporting us.

The next event is being run by the Villagers and is a **Race Night on Friday 16th November 2007**. Tickets are £7.50, please contact Graham Chappell on 220883 for tickets and more details.

In December the GI’s will be helping Dunstable Round Table with their Christmas Float. Some of the proceeds will come back to the Village Hall. It’s really great fun going round with Santa and seeing the children’s eyes light up. Any extra volunteers will be very welcome. Those of you who are interested, please contact me (Ross Bagni) on 01525 221411.

Lastly, by popular demand, we are holding another **Joint Quiz with the Tennis Club on 26th April 2008**. So, as we sold out again in October, please book your place early. Contact either myself, or Jan Hale on 220191.

Thanks for all your support. Ross Bagni

Dagnall School

A Buckinghamshire co-educational school

For 4-7 year olds



Ofsted 2003

Pupils of all abilities make good progress and achieve well. Standards are consistently high in English, Mathematics and Science. The partnership with parents and the contribution of the community to pupils' learning is excellent.

Dagnall school offers

- small classes with high quality teaching
- a secure and caring environment where each pupil is seen to be an individual and not just one of many

Each child is encouraged to achieve to the best of their ability and to develop an eagerness to acquire knowledge and become lifelong learners.

Come and visit our friendly school, meet our lovely children and dedicated staff.



Leadership in the Community
awarded 2005



Awarded for a third
time in Oct 2006

Website www.dagnall.bucks.sch.uk Tel & Fax 01442 842473

e-mail office@dagnall.bucks.sch.uk

Art & Soul

Furniture
Interior Accessories
Individual Gifts
& Original Artwork

(Commissions undertaken)



41 Western Road · Tring · Herts · HP25 4BQ
tel: 01442 822219
www.artandsoul-tring.co.uk

COFFEE TAVERN

High Street, Eaton Bray

**Hall for hire suitable for
approximately 50 people with
kitchen facilities available.**

**Also two smaller rooms ideal
for committee meetings**

FOR BOOKINGS:
PHONE SYLVIA HIGNELL
ON 01525 220891

Absolutely Plastered



DOMESTIC/COMMERCIAL, CLEAN AND RELIABLE SERVICE,
FREE ESTIMATES, FRIENDLY ADVICE

- * Plastering & Coving
- * Floor Screeding
- * Pebbledashing & Rendering
- * Dry Lining
- * Cornices & Mouldings
- * Insurance Work Undertaken

CALL NICK CONWAY ON

Mobile: 07751 830716

Tel: 01525 221877/01442 269565

26 School Lane, Eaton Bray, Dunstable, Bedfordshire LU6 2DT



Illustria Kennels & Kathotel

Mick and Denise Garrod
Proprietors

Offer your pet a fully licensed Dog
and Cat boarding service

Purpose-built Dog kennels

Individual Cat chalets with
outdoor exercise runs

All in pleasant country surroundings

**WELLHEAD BUNGALOWS,
TRING ROAD,
DUNSTABLE,
BEDS LU6 2JU
TELEPHONE:
(01582) 665343**



Neil Hodson Associates Consulting Structural Engineers

24 HIGH ST TRING

OFFER A COMPREHENSIVE RANGE OF
**PROFESSIONAL BUILDING DESIGN,
ADVISORY AND DRAWING SERVICES**

From plans for domestic extensions to
multi-storey offices, commercial
buildings and factories.

Structural surveys, site surveying,
advice on building defects and
Feasibility Studies

Planning Applications and Building
Regulation Consents obtained.

**Tel 01442 890894 OR
Edlesborough 222462**

KEITH GRADLEY ELECTRICAL

83 High Street, Eaton Bray
Tel: Eaton Bray 222303
Mobile: 07976 640869

For all Domestic, Commercial and
Industrial Wiring and Plumbing
Storage Heaters, Showers etc.
Security Systems Installed
Test and Inspections
Free Estimates and Advice

ALAN BARNARD BUILDING REPAIRS

40 ESTABLISHED 1967 **40**
NO JOB TOO SMALL

- ALTERATIONS & REPAIRS
- NEW KITCHENS & BATHROOMS
- BUILT IN WARDROBES
- PAINTING & DECORATING
- U.P.V.C FACIAS & SOFFITS
- WOOD OR U.P.V.C DOORS & WINDOWS
- WOODWORK

**20 WELLHEAD ROAD
TOTTERNHOE, BEDS**

01582 609726 & 07774 247658

YOUR LOCAL DRIVING SCHOOL

Mini Manoeuvres

**Competitive rates • Brand new mini
Patient, friendly instructor
Discount for block orders
Available 6 days a week • Pass plus**

**For more information call Kevin:
01525221519 07931535519
www.minimanoevres.co.uk**

J.G.S. Metalwork

Specialists in Gates & Gate Automation

Balustrades • Security Grilles • Railings

Curtain Rods • Weathervanes

Call in to discuss your ideas

Tel: 01525 220360 Fax: 01525 222786

High Street, Edlesborough LU6 2HS

www.jgsmetalwork.co.uk

enquiries@jgsmetalwork.co.uk

HAND CRAFTED KITCHENS AND FURNITURE

Natural finish & painted
featuring hi-tech accessories

KITCHENS BATHROOMS BEDROOMS

Tables, Chairs, Dressers,
Wardrobes etc...

All in solid wood - Oak,
maple or reclaimed pine.



SOLID WOOD FLOORING & DOORS



Our business has been built on design, originality, practicality
and our experience of quality and services.

41 Western Road · Tring · Herts · HP23 4BQ
Tel: 01442 822219 www.artandsoul-tring.co.uk

Pressing Need

Ironing, Laundry & Dry Cleaning Service

Free Collection & Delivery

from home or office

Executive Shirt Service (Wash & Pressed)

Duvet Service (washed and dry)

For more information or to book a collection

call 01582 667332 or 07885 320042

or email: ironout@aol.com



VANSAR BLINDS

Domestic and Commercial Specialists
In all types of Blinds and Awnings

Family Business est. since 1984

- ◆ Vertical
- ◆ Venetian
- ◆ Rollers
- ◆ Wood Weave
- ◆ Roman
- ◆ Pleated
- ◆ Wood Venetian
- ◆ Conservatory Blinds
- ◆ Patio Awnings

**For a Friendly & Reliable Service
Free Measuring and Quotations**

Supply and Fitting
Contact Mark Allen

on

01525-220477

07711 257473

Weddings * Birthdays * Anniversaries
 Funerals * Social Functions
 Corporate Contracts * Balloons
 Fashion Jewellery * and much more ...



For all your floral requirements

Full Teleflorist member deliveries worldwide

Opening Times

Monday – Thursday 9.00 am – 4.30 pm
 Friday 9.00 am – 6.00 pm
 Saturday 9.00 am – 1.00 pm
 Sunday closed

2 High Street, Edlesborough,
 Beds, LU6 2HS
 Tel. 01525 221920

Email: Sam@budsofmayflorist.co.uk

MICHAEL HUBBINS

TELEPHONE ENGINEER

Installation of Telephone Extension Sockets
 Digital, Satellite & Internet Sockets

Also Domestic Electrical Work Undertaken

Tel: 01582 471648

Mobile: 0771 8834851



Stephen D.

Janes

Est. 1982

**CARPENTRY, JOINERY
 KITCHENS FITTED
 PROPERTY MAINTENANCE
 TELEPHONE: 01525 220649**

PA PLUMBING

Mob: 07812 085170

- Bathrooms Fitted
- Emergency Call Outs
- Burst & Leak Repairs
- Insurance Work
- All Work Guaranteed
- No Job Too Small
- Quick Reliable Service
- Free Estimates
- All General Plumbing

01582 604070

40 Westfield Road, Dunstable, LU6 1DH

Anne Johnson D.O.

Registered Osteopath

6 Moor End, Eaton Bray

01525 221958

07957 250682

Daytime and Evening

Appointments Available



All Osteopaths are registered with the General Osteopathic Council



REFLEXOLOGIST

MARYLYN AUBURN, M.A.R.

Leighton Road, Edlesborough

Telephone: 01525 220030

Member of the Association of Reflexologists

Digital +

Aerial & Satellite Systems

Tel: 01525 237498

Mobile: 07970 260518



www.digitaltelly.tv

Edlesborough School



Choosing the most appropriate school for your child is a very important decision

Edlesborough School is a co-educational village school for children from 4 to 11. We provide the benefits of a continuous primary education and the broad experience of a highly professional and caring staff. Our aim is to help all children achieve their maximum potential as individuals and as members of society.

'Overall academic standards are very high'

'Pupils make very good progress'

'Pupils are very well behaved, want to learn and work hard to meet the many challenges they are given'

(OFSTED 2003)



We would welcome the opportunity to show you round our friendly school.

Please ring Janet Hatfield on 01525 220431

Fax 01525 221819 www.edlesborough.bucks.sch.uk



INVESTOR IN PEOPLE

Salvation Sound. . . . November 2007

Carbon Footprints.....

Where have all the flowers gone?

Weedkillers taken everyone.

Where have the butterflies gone?

Insecticide killed them everyone.

Where have all the fish gone?

Deep sea trawling caught each one.

Where are the whales? The dolphins at play?

Why, margarine and zoo exhibits took them away.

Animals and birds of the air,?

We took their lives for clothes to wear.

Forests burnt, or in decline,

Habitats, gone for all of time.

No more are lakes and streams

Filled with water, crystal clear,

For effluents from factories

Are dumped, haphazardly here.

Was the serpent part of God's plan,

When it tempted Eve,

And showed her the evil heart of man.?

Murder, and drugs, the way of today,

Man killing man, pain and scars

That will never go away.

Once, long ago, this earth was fair,

'Twas man brought about the wear and tear.

It must be stopped, before it's too late;

Before man himself suffers our sad earth's fate.

This world was entrusted to our care

That its beauty all could share;

Our inheritance, this Eden,

All that we hold dear

Causes me to shed a tear,

You and I can ease the world's pain

If on our life's journey we would learn

How to show our love and how to feel concern.

Pollution is all about us...we all know it....

In cities across the world people are wearing face masks against the fumes

from vehicle exhausts. We have dirty, trash littered streets, acid rain, global warming, polar ice caps are melting. Deserts are growing ! - vegetation isn't. We are slowly destroying the world in which we live.

God made this world, He entrusted it to our care. He said it was "Very good". Ask yourself is it so good now ?. The Bible says "The earth is defiled by its people" God says "Do not defile the land where you live" and yet we continue in our selfish ways. We pollute not only the land but ourselves as well, for however small a sin is, it damages our hearts, and because of this, the sense of turmoil that we often experience can lead to destruction.

God sent Jesus to die for us that we might be cleansed and forgiven of our sins. - surely then we must all become more caring, more loving, more vigilant, for then we will be aware of our surroundings, ourselves, and the damage we do daily. Pollution - think to yourself "How can I help to effect a cure" - then act upon it....

"If my people, which are called by My name, shall humble themselves, and pray, and seek My face, and turn from their wicked ways; then I will hear from heaven, and will forgive their sin, and will heal their land."

IS YOUR COMPUTER GIVING YOU A HEADACHE?

For all your home or business
computer problems

**Contact Dave at A-rama (UK) Ltd at
The Book Castle, 12 Church Street,
Dunstable, Bedfordshire LU5 4RU**

**Tel: 01582 605670 (9.00-17:30 Mon-Sat) or
Mobile: 07850 777944 (9:00-21:00 Mon-Sat)**

All Saints, Dagnall - Services and Meetings in November 2007

Sun. 4th Nov	9.00 am	Holy Communion
	10.30 am	Morning Service
	6.00 pm	Evening Service with Holy Communion
Wed. 7th Nov	7.45 pm	Mid-week Meeting led by Revd Peter Dudeney
Thu. 8th Nov	7.30 pm	Eucharist
Sun. 11th Nov	10.30 am	Morning Service
	6.00 pm	Sung Eucharist
Wed. 14th Nov	7.45 pm	Mid-week Meeting led by Revd Vindra Maraj-Ogden
Sun. 18th Nov	10.30 am	Family Communion
	6.00 pm	Evening Service
Wed. 21st Nov	7.45 pm	Mid-week Meeting led by Canon Malcolm Grant
Sun. 25th Nov.	9.00 am	Holy Communion
	10.30 am	Family Service
	6.00 pm	Evening Prayer
Wed. 28th Nov	7.45 pm	Mid-week Meeting - Speaker: Bruce Osborn
Sunday School meets each Sunday at 10.30 am.		



Vera Hannah May Davies

Norman Davies and family would like to express their heartfelt thanks for all the cards and messages of sympathy received after Vera passed away peacefully on 25th September. We were overwhelmed by the kindness of friends and neighbours at this difficult time.

Vera celebrated her Diamond Wedding Anniversary on 28th June, a date she was determined to see, and she enjoyed a lovely day celebrating with husband, family and close friends. She had been bravely fighting cancer for 18 months, but at 82 it was a battle she couldn't win and Vera was nursed at home during her final weeks of illness by Iain Rennie Hospice at Home's Ridgeway Team. We cannot praise them highly enough for their dedication and gentle care. Norman would like to thank Canon Malcolm Grant and everyone at St Mary's Church for their support and compassion. Life won't be the same for Norman without "his girlie" by his side, but he finds peace in the knowledge that he has good friends in the village to guide him over the coming months.

NORTHALL BAPTIST CHAPEL

Chapel Lane, Northall

(just beyond the speed limit signs on the road to Leighton Buzzard)

Everyone is welcome to our Sunday worship each week between 11am and 12.30pm including tea/coffee and time to talk together

For more information contact: Steve and Helen Orchard 01525 373106

There has been a Baptist Chapel in Northall for more than 200 years. Today we continue to seek to worship God, serve him in our daily lives and support and encourage one another in the difficult and the joyful times.

Eaton Bray Village Hall 100 Club Winners September 2007

Number	Name	Winnings
199	Jan Blundell	£100
18	Vivienne Grundy	£25
50	Frank Pell	£25
186	Les Jones	£25
29	Ann Hunt	£25

Drawn on 21st September 2007 at St. Jude's Physiotherapy Clinic, Leighton Buzzard. Please direct any correspondence to Ross Bagni, 71 Bower Lane, Eaton Bray, Bedfordshire, LU6 1RB, Telephone: 01525 221411.

EATON BRAY VILLAGE HALL

**LARGE & SMALL HALL,
MEETING ROOM, STAGE,
KITCHEN, LARGE CAR PARK**

**SUITABLE FOR ALL KINDS OF
EVENTS:-**

- WEDDING RECEPTIONS
- CHILDREN'S PARTIES
- KEEP FIT, BADMINTON
- STAGE PLAYS ETC

**TELEPHONE TO BOOK
YOUR EVENT ON:-**

01525 222831

**KEYS TO BE COLLECTED
BY ARRANGEMENT**

**Gary Witts
Approved Driving Instructor**

01525 38 39 40

07748 305859

gary@passyourtest.org

www.passyourtest.org

**Patient, friendly and reliable tuition
Pass Plus Registered
Motorway / Refresher Lessons available
Member of the Driving Instructors Association**

DOMESTIC ELECTRICIAN

JOHN BRODRICK

FULLY QUALIFIED

NICEIC REGISTERED

FRIENDLY, PROFESSIONAL, RELIABLE

LOCAL SERVICE

01525-223081

07884-471565

CSL

Charvet Services Ltd

Plumbing & Heating Engineer

40 years experience/CORGI registered

Full central heating installation, boiler changes, all heating repairs

Landlords Gas safety certificates

*Complete plumbing service - bathroom refurbishments including tiling
and electrical work*

Underground drainage/blocked pipes etc.

Free Quotations • No call out charge • No payment until complete satisfaction

Telephone: 01525 221052 - Mobile: 07721 625887



Abbeywood

building • construction • maintenance

"A company with high standards of workmanship providing good old fashioned service"

OFFICE:

01525 270045

•

MOBILE:

07946 857323

- EXTENSIONS • LOFT CONVERSIONS • PATIOS
 - INTERIOR & EXTERIOR PAINTING/DECORATING
 - FITTED KITCHENS/BATHROOMS/BEDROOMS
 - ALL GENERAL BUILDING WORK
- *Free estimates and advice*
 - *Based locally with a friendly approach*
 - *Committed to giving you what you want without problems*

All Your Storage Needs Met
Clean, Dry and Secure Warehouse

Warehouse Storage Available for
Short/Long Term

Archive Boxes, Liquidated
Companies, Shredding available.
Household & Business items

Collection & Delivery
Boxes and other packing materials
available if required.

Dagnall Storage Company

Thameside Construction
Unit 2

Grove Farm
Ivinghoe Aston
Beds LU7 9DF

Tel: 01525 221062

Fax: 01525 221857

Email: dagnall@thamesideltd.co.uk

Kingsley

GARAGE DOORS

- All types & makes of door supplied & fitted
- Steel, timber, glass reinforced polyester (GRP)
- Sectional doors - an ideal solution for short driveways

Electric operators from £300 fitted
Automate your existing garage door

PROMPT REPAIR SERVICE

CALL 01525 221058

News from Aylesbury Vale District Council

From Councillor Terry Jones

Change of Offices

AVDC have now moved out of their offices on Exchange Street and gone to The Gateway, Gatehouse Road, Aylesbury, HP19 8FF. The phone numbers remain the same and the switchboard number is 01296 585858. The new building is at the junction between Gatehouse Road and Bicester Road. The move is to make way for the new shopping development, which is planned for the area.

Northall Road

We have been making efforts to have the speed limit lowered on the A4146 through Northall, where it is almost impossible for the residents to walk from their homes because of the traffic. Highways are the responsibility of Bucks County Council, and the County Councillor in charge has informed us that the programme of speed limit reviews is in priority order of speed/crash related records. Initial proposals have been drawn up for the A4146. A briefing meeting with local County/ District/ Parish Councillors is scheduled for early 2009 to go over the work, and public consultation will take place in 2009, with new speed limits due to be in place by Spring/ Summer 2010.

Ivinghoe Aston

Enquiries regarding a lower speed limit through Ivinghoe Aston produced a similar response from Bucks County Council. Residents in the village also thought that it was not necessary to increase the street lighting on the outskirts of the village.

Affordable Housing

We are making significant progress in the delivery of affordable rural housing. The Rural Housing Enabler, Jean Fox, works with Parish Councils to increase affordable housing in villages with a population below 3000 inhabitants. If a Parish Council considers there may be unmet need, they are welcome to contact Ms. Fox, who will conduct a Housing Needs Survey.

Properties are built only for people with a strong connection to the parish concerned. They are either rented or part owned between the occupier and a housing association (shared ownership). They are allocated in order of priority need through the Aylesbury Vale District Council Housing Register. A legal agreement ensures that the properties always remain for the local community. Further information on current schemes has been sent to the Parish Clerks. For more information contact Jean Fox (Rural Housing Enabler) on 01296 421036 or email jean@bucks-comm-action.org.uk or Vikki Slawson, on 01296 585360 or email: yslawson@aylesburyvalcdc.gov.uk

Neighbourhood Policing

Between 1st October and 21st December 2007, Thames Valley Police and Aylesbury Vale District Council will be conducting a survey to establish residents' perceptions of neighbourhood policing. 300 to 400 residents in each neighbourhood will be phoned and asked for their views.

Mobile Skate Park Equipment

Aylesbury Vale District Council has Mobile Skate Park equipment which is available for your parish or youth club to hire. This is an exciting opportunity to promote sport,

physical activity and fun for children, young people and adults alike. We offer three packages to suit all budgets and spaces.

The weather does not need to be an issue either as the mobile skate park is designed for indoor use. We have run a number of sessions inside halls and youth clubs and provide a new, challenging sport to young people.

If you are interested in a hiring, training event or just to find out more information then please contact Chris Bolton on (01296) 585195 or cbolton@aylesburyvaledc.gov.uk

Terry Jones, phone: 01296 630062, mobile: 07884 121 657, email: tjones@aylesburyvaledc.gov.uk



THE NATIONAL TRUST

Friends of Ashridge

The Friends of Ashridge invite you to their coming events, all to raise funds to support the work of National Trust staff keeping the Ashridge Estate a beautiful place for us all to enjoy. In the past few months alone, funds raised have paid for two trailers for heavy work on the Estate. In addition to the Friends' events, Ashridge staff organise walks, talks and events for all the family: see full details of all events at www.nationaltrust.org.uk.

If you are interested in joining the Friends, either to help with our events or to join a volunteer conservation group, phone 01582 619 829.

22 Nov 2007 'Fields of Dreams — Ashridge on Screen'. Illustrated talk by Harvey Edgington, NT Film Advisor, on why National Trust properties feature so often on the big and small screens. 8pm, Berkhamsted Civic Centre. Members £3, visitors £4 on the door. Includes a glass of wine.

2 Dec 2007 Craft Fair. Come and join us at Ashridge at Christmas, 10am to 4pm, Monument Green, Ashridge Estate, Ringshall. Free entry. Gifts, cards, Estate timber products, Ashridge venison. NT Visitor Centre, shop and tea room open. Christmas music.

28 Dec 2007 Christmas Ramble. A chance to walk off some of that Christmas excess and at the end some well-earned wine and mince pies to put it all back again... 10am, Ashridge Monument Visitor Centre, Ashridge Estate, Ringshall. Members £3, their children £1.50, visitors £4, their children £2. Must book! — phone 01442 851 227.

11 May 2008 Spring Plant Fair. Do you have well-rooted, healthy plants to donate? — then please contact: Stuart Downhill 01442 865 821. Thousands of plants for sale — come early to this popular annual event to get the pick of the huge variety on sale. Trees, shrubs, perennials, herbs, annuals etc. Plants supplied by private gardens as well as commercial nurseries. Fencing, trellis and planters made from Estate timber for sale and to order. National Trust Visitor Centre, Gift Shop and Monument Tea Room open from 10am. For more information: 01442 864 984. Batricars available by arrangement.



Eaton Bray Lower School

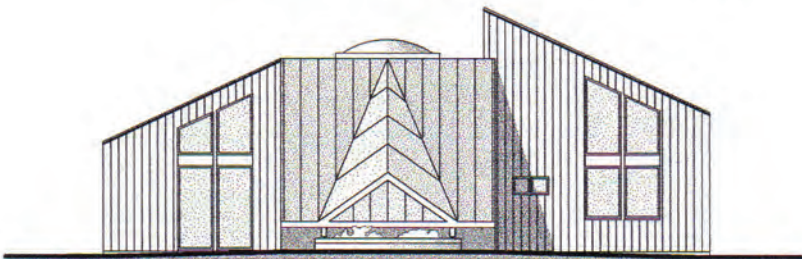
"The openness, warmth and mutual respect which permeate the School, promote a purposeful climate in which effective learning can take place" (Ofsted)

Please come and visit our friendly village school. Phone 01525 220468 or email eaton@deal.bedfordshire.gov.uk



**We have been awarded
National Healthy School status**

COMING SOON - EBLS Nursery with extended School provision and wrap-around care in a modern, light, sustainable new building.





“children are happy, settled and confident”
“children have a strong bond with the staff team who respond to their needs appropriately”
“children with any form of special need are very well supported in this group”
Ofsted Nov, 2005

“All of the girls working at the nursery make it their interest to know each and every child and are aware of each Child’s character. Clearly the children are happy as on my duty as parent helper you hardly ever heard tears, and any arguments over sharing are quickly noticed and dissolved by excellent staffing.” **letter from parent, 2006**

We Offer:

- A secure, child-friendly environment five mornings a week for children 2½ years to school age.
- Enclosed outdoor play area.
- Close links with local schools and the community.

To find out more, or to arrange a visit to our setting, please telephone:

Mrs Ann Tobin (Playgroup Leader) on 07816 358 342

Contemplating an office move, refurbishment, fit out or purchasing new office furniture?

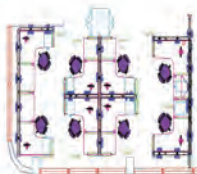
FREE CONSULTATION ON ALL OFFICE & COMMERCIAL INTERIORS PROJECTS.

Independent advice from professional consultant with over 20 years industry experience and contributor to leading interiors industry publication.

AREA'S OF EXPERTISE INCLUDE:

- **Product Selection & Contract Negotiation**
- **Move Management Logistics**
- **Project Management**
- **Health, Safety & Disability Discrimination**
- **Pan-European Experience**
- **Published Industry Authority**

Review our profile @
www.knowledge-counsel.co.uk
and contact Roger Croft



TECHNIQUE
CONSULTANTS (UK) LTD

Email: roger@techniqueconsultants.co.uk
Tel: 01525 222935 - Mobile: 07836 269753



Dagnall News

Over 60's

In September a delighted full house was once again entertained with a very varied programme of organ music by Jean Martyn. Thanks go to the church ladies for a wonderful spread of food in the interval, and to all those who donated raffle prizes. The concert generated a profit of £400, of which £150 has been donated to All Saints Church towards a new carpet.

Our October meeting was the traditional Sausage & Mash lunch followed by Apple Pie. A meal thoroughly enjoyed by all.

In November, as addition to our meeting on the 13th in the Village Hall, we have been invited to Kensworth Over 60's club.

Dagnall Church

Advance notice of the Christmas Coffee Morning, Sat 8 December, All Saints' Church Dagnall from 10.30 am. Monies in aid of Iain Rennie Hospice at Home.

Macmillan Coffee Morning

Chris & John Yorke and Sue & David Cawdell would like to thank all who attended the coffee morning on September 28th at 1, Chestnut Close, Dagnall. A donation of £140 was sent to the Macmillan Cancer Relief Fund.

Harvest Prayers by the Bluetits of Dagnall School

Dear God

Thank you for the juicy lemons.
Thank you for the sweet strawberry.
Thank you for the green lettuces.
Thank you for everything.

Amen

By Sam

Dear God

Thank you for the sweet strawberries that we eat.

Thank you for the juicy oranges.

Amen

By Keiran

Dear God

Thank you for the lemons because they are sweet.

Thank you for the Farmers that grow the food for us.

Amen

By Sam

Dear God

Thank you for the raspberries.
Thank you for the milky coconut and Kiwi.

Amen

By Jake

Dear God

Thank you for the strawberries and don't forget the banana splits because they are tasty.

Thank you for the sweet coconuts.

Amen

By Eloise

Dear God

Thank you for strawberries they are sweet and yummy.

Thank you for the tomato it is sweet and juicy.

Amen

By Jessica



Christmas Lunch Project

For more than forty years the Members of The Rotary Club of Dunstable have provided and delivered hot Christmas lunches to local people who are unable to leave their homes or who have no family support available. With the continued extension of the holiday period at this time the housebound may have little or no outside contact for up to two weeks. The visit of the Rotarian who delivers the meal not only provides the nourishment that is so essential to those in poor health in the middle of winter but also gives a chance for the them to have some human contact and conversation. This can be of as much value to them as the meal. In order to allow time for these contacts, while avoiding any delay in making subsequent calls, each Rotarian will only deliver to a small number, usually two, addresses. The changes in the structure of the Social Services with devolution of their responsibility has led to difficulties for us in obtaining details of those who may need our assistance with this project. Any assistance that you can give to allow us to contact those who may benefit from our attention will be most welcome, all information is treated confidentially.

Details can be given to any member of the Rotary Club of Dunstable or sent direct to:Owen Pinney, Community Service Committee Chairman, 19 Elm Grove, Toddington, LU5 6BJ.



Letters to the Editors

Dear Editors,

We would like to publicly praise the work undertaken by the florist shop Buds of May in Edlesborough for our daughter's recent wedding at a venue in St Albans.

One of the aspects that contributed to her special day was the floral arrangements provided by Sam who owns and runs the shop. All the flowers were delivered to the hotel in superb condition and it was clear that they had been chosen carefully to match the colour theme of the occasion. The bouquets, displays and buttonhole flowers were beautifully crafted and presentations were so original whilst still keeping with tradition. We were very pleased that our daughter had chosen Buds of May after she had spoken with other florists nearer to the location. It was also gratifying for her and us that many of the guests made extremely favourable comments on the flowers.

We would recommend that villagers should look no further than our own villages for the excellent and personal services that are available.

RJ & D Kennett

Something wonderful!

Opening the curtains of the window which overlooks the recreation ground one Saturday morning, to see a team of young footballers approaching. They were chatting among themselves coming up the service road when they saw the rec and were heard to say "Cor, it's a proper park" and at this point all eleven members of the team ran off to the play area where they all had a great time before their match. So wonderful to see the rec being used and not standing empty.

Name Supplied





Book Review from the Edlesborough Book Group To the Lighthouse by Virginia Woolf



'To the Lighthouse', by Virginia Woolf draws on the author's own childhood memories of summer holidays with her family in St Ives.

In the novel itself, the setting is transferred to the Isle of Skye, and the story is centred around Mr and Mrs Ramsey, their eight children and friends of the family, staying either with the family or nearby. The friends are rather intellectual, a philosopher, a poet, a politician and a young artist, Lily Briscoe, struggling with her rather feminist outlook, which goes against the received contemporary view. She is the polar opposite to Mrs Ramsey and proves vital to the balance of the story, which is in three parts.

The first, seen through the eyes of Mrs Ramsey, her perception of the house and the characters around her, sets the scene and her son's desire to go 'to the lighthouse' is the spur from which the action takes place.

The middle section describes what happens to the family over the next ten years, during World War One and the simultaneous decay of the house.

In the final section, the remaining family and friends gather for a trip to the lighthouse and Lily Briscoe, who has struggled to retain her independence and creativity, manages to complete her picture.

This book provoked very definite views and a good discussion about motherhood, feminism and stream of consciousness writing style. Most members of our group disliked it intensely and would never read Virginia Woolf again, whereas, three others enjoyed it and commented on its overall skill at description and conjuring atmosphere.

St Mary's Parochial Church Council Meeting

The meeting was held on 13th September at All Saints Dagnall.

A new Electoral Roll Officer – Tracey Steel has been appointed to replace Chris Driscoll who has retired from the position after many years of service.

It was agreed that due to a shortage of helpers the church will now be cleaned fortnightly to ease the workload on the rest of the team until more volunteers can be found.

A new study group is to run this autumn based on an Emmaus course, this will start on October 4th and run fortnightly to the end of November.

A discussion took place about the Diocesan Environmental Police and a review will now take place to look at items like heating, lighting, recycling and travelling.

The distribution of money raised at this year's carnival was discussed and approved, in all £11,500 will be distributed.

A new draft Child Protection Policy has been prepared for circulation and will be discussed at the November meeting.

The Church Mouse



**The National Trust
South Beds Assn**

Wednesday 7th November

Falklands Fantastic

**Richard Revels, Wildlife
photographer**

**7.45pm, Salvation Army Centre,
Bull Pond Lane, Dunstable**

Visitors are welcome at £1

Mark Janes Contacts

**Felt Roofing - All Roofing Repairs
and Property Maintenance**

FREE ESTIMATES



t: 01442 877528

m: 07841 343470

e: mark.janes3@btinternet.com

**Established 25 years
Approved Contractor
for Local Authorities**

Beautopia

*"aiming to meet all your beauty needs in
a friendly & tranquil environment"*

Dermologica Facials

Body Massage

Waxing

Manicure's & Pedicures

Tanning

Biosculpture Gel Nails

171 High Street

Berkhamsted

Herts, HP4 3HB

*Please call Julie on: 01442 870065
to request a brochure or to book an
appointment*

*All Major credit cards accepted
Gift Vouchers available*

Dominic Woolcott Painter & Decorator



- Internal & External
- Plastering & Coving
- Insurance Work
- 20 Years Experience
- Competitive Rates

**For a professional job call:
01525 229682 or 07747 042879**

David John Harris



(Established 1992)

All Fencing Work • All Gates
Paving • Patios
Driveways • Shingle
Hedge Setting and Cutting
Grass Cutting
Turving Specialist
Exterior Painting Service
Sheds
Small Building Work
Trees & Shrubs Supplied

Tel/Fax: 01525 221745
Mobile: 07889 143713

Vicky Waller



YOUR DOG DESERVES THE BEST
♥ PUT VICKY TO THE TEST ♥

- Trained at the London Academy of Professional Groomers to the highest City and Guilds standard
- Sympathetic and gentle handling of all dogs

NO CAGES

Contact Vicky
Telephone: 01525 222775
www.dogcare.co.uk
Email: vicky@dogcare.co.uk

PROFESSIONAL CLEANING SERVICES

From a Christian, family-run company. Fully Insured.

OUR BUSINESS IS BASED ON HONESTY & SATISFACTION. A LARGE PERCENTAGE OF OUR WORK COMES FROM REFERRAL & RECOMMENDATION.



CARPET & UPHOLSTERY CLEANING

FULL, FREE, NO-OBLIGATION SURVEY & QUOTATION PRIOR TO CARRYING OUT ANY CLEANING - PROVIDING SERVICE TO THE HIGHEST STANDARDS.

WINDOW & CONSERVATORY CLEANING

-USING PURE WATER THROUGH WATER FED POLES.
SAFE, MODERN, INDUSTRY APPROVED TECHNIQUES WITHOUT THE USE OF LADDERS! **MONTHLY CLEANING AVAILABLE**



PATIO & DRIVEWAY CLEANING


REDUCE THE DANGERS OF SLIPPING IN THE WET OR WINTER WEATHER BY REMOVING MOSS AND OTHER DEBRIS - RESTORING COLOURS - MAKE YOUR HOUSE STAND OUT FROM THE CROWD!

01442 250679 Murray's Cleaning Services

Let us take care of the cleaning so that your free time is leisure time.

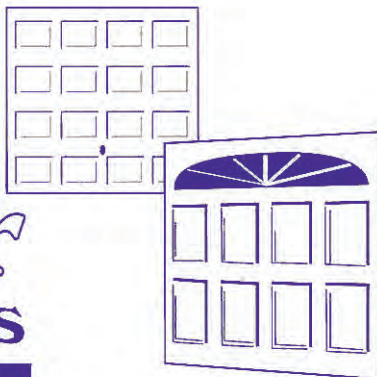
www.murrayscleaningservices.co.uk

19 Broom Hill, Hemel Hempstead.



Premier Garage Doors

MANUAL & ELECTRIC



Quality Garage Doors

- ✓ SUPERB CHOICE OF DESIGNS IN METAL,
WOOD AND FIBREGLASS
- ✓ ANY SIZE DOOR MADE TO YOUR REQUIREMENTS
- ✓ LARGE SELECTION OF SPARES & FAST REPAIR
SERVICE AVAILABLE
- ✓ NEW OR EXISTING DOORS CONVERTED TO
AUTOMATIC
- ✓ PROFESSIONALLY FITTED BY OWN EXPERT
CRAFTSMEN
- ✓ PROMPT FREE ESTIMATES & ADVICE
- ✓ WE COVER ALL AREAS

- DIY KITS AVAILABLE
- INSURANCE WORK WELCOME
- COUNCIL APPROVED
- REMOTE CONTROL GATES ALSO
AVAILABLE

(EST 1984)

**UNIT 7 SPARROW HALL FARM
LEIGHTON ROAD, EDLESBOROUGH LU6 2ES**

01525 220212 OR 01494 773391

Janes

FREE TV DELIVERY

**Purchase your new LCD TV
from JANE'S
And we will deliver at a
time that suits you**



FREE TV INSTALLATION

**We will also Tune and Set-up the
LCD TV and show you how it all works.
And if you need any further help, just
give us a call we are always at the end
of the phone.**



Weekly Payment Scheme Available

**You could also pay Weekly, Fortnightly or Monthly
Ask staff for more details**

www.janesltd.co.uk

**4-8 High Street, Edlesborough, Dunstable, Beds LU6 2HS
Tel: 01525 220208 Fax: 01525 222802**