

# FOCUS

July 2008

**ST MARY'S VILLAGE CARNIVAL 2008**  
**SATURDAY 5TH JULY**

**EDLESBOROUGH**

**STREET CARNIVAL PROCESSION** ■ **LOADS OF FANTASTIC STALLS**  
**BIRDS OF PREY** ■ **BOUNCY CASTLES** ■ **CLASSIC CARS**  
**KIDDIES RIDES** ■ **DUCK RACE** ■ **ARENA ENTERTAINMENT**  
**CRAFT DEMONSTRATIONS** ■ **GRAND PRIZE DRAW** ■ **TEA TENT**  
**BEST DRESSED HOUSE COMPETITION** ■ **PET CORNER** ■ **STEEL BAND**

**OPENING 12.30 ON EDLESBOROUGH GREEN**

THE FOUR VILLAGES MAGAZINE

EATON BRAY

NORTHALL

EDLESBOROUGH

DAGNALL



## The White Horse at Eaton Bray

Traditional Pub and Restaurant

Reservations Tel: 01525 220231

[www.the-whitehorse.co.uk](http://www.the-whitehorse.co.uk)



Food to suit all occasions,  
Bar Snacks  
and A La Carte.  
Properly kept  
beers and a great  
choice of wines.

**Focus - The Four Village Magazine  
Magazine Committee**

**Joint Editors:** George Crutcher - 7 Summerleys, Eaton Bray 221637

**Email:** [george.crutcher@tiscali.co.uk](mailto:george.crutcher@tiscali.co.uk)

Sally Siddons - 34 Wallace Drive, Eaton Bray 221733

**Email:** [sallysid@hotmail.com](mailto:sallysid@hotmail.com)

**Dagnall Representative:** Sue Cawdell - 10 Deans Meadow, Dagnall 01442 842200

**Northall Representative:** Derrick Bonfield - 'Poppy'n', Eaton Bray Road 220013

**Circulation Manager:** John Plater - 41 Church Lane, Eaton Bray 221095

**Treasurer:** Ken Coates - 10 The Nurseries, Eaton Bray 220868

**Advertising:** Sally Siddons - 34 Wallace Drive, Eaton Bray 221733

**Production Manager:** Tracey Moren (Moren Associates Limited) 01525 229695

Copy for publication to the Editors or one of the following by the **10th of the month:**

Kevin Cabbage - 'Larums', Eaton Bray Road, Northall

Val Barrow - 3 Chestnut Close, Dagnall

*Focus accepts no responsibility as to the accuracy or content of any advertising or articles published in 'this' magazine neither do they reflect the opinion of members of the Committee.*

*© Articles published in Focus may not be reproduced without permission.*

**August Focus will be a joint issue for August & September. Don't forget to send in your August & September entries by 10th July.**

**Police Contact Numbers...making neighbourhoods safer together**

General Assistance (Recommended Number) 01234 841212

Leighton Buzzard Police Station/P.C.Viv Dady 01582 473418

P.C. Viv Dady Mobile 07900051367

Typetalk: 18001 01582 437418

Email: [SNT.Leighton-Rural@Bedfordshire.pnn.police.uk](mailto:SNT.Leighton-Rural@Bedfordshire.pnn.police.uk)

**Thames Valley and  
Bedfordshire Police Surgery**

**Saturday July 26th**

**10a.m. – 12p.m.**

**Memorial Hall Edlesborough**

Call in and meet the officers who cover Eaton Bray (Beds) and Edlesborough, Northall and Dagnall (Thames Valley)

Have a cup of tea or coffee, discuss any issues you may have or just come and say hello.

**NOTICE OF VISIT BY  
ANDREW SELOUS MP**

**18TH JULY 2008**

**11:30AM-12NOON**

**AT THE COFFEE  
TAVERN, EATON BRAY**

**Andrew Selous MP hopes to meet  
as many constituents as possible**

# Village Diaries July 2008



## Weekly

- Mon-Fri (term time) Eaton Bray Pre-school, Eaton Bray Village Hall, Cindy 07773 095624
- Mon-Fri (term time) Dagnall Under 5's, Dagnall Village Hall, 9.30-12 noon, Mrs Ann Tobin 07816 358342
- Mon-Fri (term time) Edlesborough Under 5's Pre-School, Edlesborough Memorial Hall, Sue 01525 222199
- Mon-Thu (term time) Totternhoe Pre-school, mornings, Totternhoe Memorial Hall, Kay 07803 925254
- Mondays Pilates, 10.45am, St.Giles Church Hall, Totternhoe, Lisa: 01582 412426
- Mondays (term time) Mums & Tots Group, 1-2.30pm, Grace Community Church
- Tuesdays Yoga Classes, Northall Village Hall, 1.45-3.15pm 01525 377542
- Tuesdays Line Dancing, 1.30-3p.m., Eaton Bray Village Hall, Lyn Stubbs 220731
- Tuesdays Baby's First Cafe (Support for Breastfeeding mums), 10.15 - 11.45 am, Pitstone Memorial Hall
- Tuesdays FITKID, 6-7pm, Eaton Bray Village Hall, Caroline 08445 606432
- Tuesdays Totternhoe Baby & Toddler Group, 9.30-11.30am, Totternhoe Village Hall, 07986 730922
- Tuesdays Northall Toddler Group, 10am - 12 noon, Northall Village Hall, Ellie 01525 222144
- Tuesdays Fortnightly Coffee Morning, Bring & Buy, Table Top Sale, 10-12noon, Salvation Army Hall, Booth Place, Eaton Bray
- Weds (term time) Eaton Bray Under 5's, 1.15-3pm Eaton Bray Village, Hall Cindy 01582 477568
- Wednesdays Chi Kung & Wu Chi classes, Coffee Tavern 11am - noon
- Wednesdays Pilates, 7.15pm, Northall Village Hall, Lisa: 01582 412426
- Thurs (term time) Baby & Toddlers Group, Dagnall Village Hall, 12:45 - 2:45pm (12:15 if bringing lunch) Contact Michelle Tel 01442 842 676
- Thursdays Yoga Classes, Northall Village Hall, 11.30am-1pm
- Thursdays Keep fit, 2pm, Eaton Bray Village Hall, Mrs Johnson 220304
- Thursdays Kfa Body Moves 40+, Fitness through movement, exercise & dance. 8-9pm, Edlesborough School, Pat 01582 668735
- Thursdays Baby & Toddler Group, Salvation Army Hall, Booth Place, Eaton Bray, 9.30-11.30am
- Fridays SOCATOTS,12:45, Eaton Bray Village Hall, Daniel Walker 07968 778681
- Fridays (term time) The Venue for 8-12s @ Grace Community Church, 7.00-8.45 pm, Bruce Moulding 01525 221601
- Saturdays Jazzercise, Eaton Bray Village Hall, Angela Veryard, 715208

## Monthly

- 1st Monday Eaton Bray Parish Council Meeting, 7.30pm, The Coffee Tavern  
1st Monday Eaton Bray W.I. Meeting, 7.30pm, Eaton Bray Village Hall, Contact Sheila Beal on 01525 221185
- 1st & 3rd Tuesday Dunstable & District Orbit Club meet at Dunstable Rugby Club at 8pm. For details contact 01525 222441 or 01582 755147
- 2nd Tuesday Toddlers' Church, St Mary's, Eaton Bray, 2.00pm  
2nd Tuesday Dunstable & District Local History Society meeting, 7.45pm, Methodist Church Hall, Dunstable (opposite Wilkinson)  
2nd Tuesday Edlesborough W.I. Meeting, 7.30 pm, Edlesborough Memorial Hall
- 2nd Wednesday 8.15pm Healing Service in St Mary's Church  
2nd Thursday CAMEO Coffee, tea & chat, 10am-12noon, Edlesborough Methodist Church
- 3rd Thursday Edlesborough Parish Council Meeting, 7.30pm, Memorial Hall  
3rd Sunday Grace Community Church Service, 11am, all welcome, Bruce Moulding 01525 221601  
3rd Sunday Lunch club 11.30 to 2.00pm, Eaton Bray Village Hall, Chris Hewitt 222288

## Other Regular Events

- 9th & 23rd Bingo, Dagnall Village Hall 8pm.  
11th Leukaemia Research Coffee Morning, 2 Dunstable Road, 10.30 am.  
15th Over 60's, Garden Party at 1, Chestnut Close 2pm

## One Off/Annual/Irregular Events

- 5th Brunch take-away at All Saints Church from 9.30 – 11.30 am  
18th Andrew Selous MP Visit, Coffee Tavern, Eaton Bray, 11:30am-12noon  
19th Desserts & Divas Evening, 7.30pm, South End Lane, Northall, Tickets £7 from Lyn Stubbs 220731  
26th Thames Valley and Bedfordshire Police Surgery, Memorial Hall Edlesborough, 10a.m. – 12p.m.  
30th Play Around The Parishes Play Scheme, 10am-12.30pm, Dagnall Recreation Field. For children aged 4 to 12 years accompanied by parent or guardian. Details of other similar events in August in Dagnall, Edlesborough & Northall are on page 47 (Edlesborough Parish Council News)



## Baby's First Cafe

Are you a new mother and breastfeeding or are you thinking about breastfeeding? Come along for support and advice from breastfeeding advisors and other mums in a relaxed café setting.

TUESDAYS 10.15. – 11.45.

Pitstone Memorial Hall, Pitstone LU7 9EY

Just drop in or contact your Health Visitor.

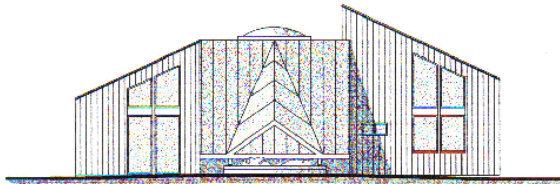


# *Eaton Bray Lower School*

## **Welcome to the new Eaton Bray Lower School Nursery**

Eaton Bray Lower School is very pleased to announce the opening of its new pre-school facility in a purpose-built setting within the school grounds. We are now able to formally join forces with the successful Eaton Bray Pre-School Playgroup on the same site to combine our efforts for the further benefit of the children and wider community. We are very lucky to have been able to take a creative and innovative approach to the building due to the skill and vision of one of our governors, the architect Andrew Whiteley, whose contribution is greatly appreciated. With a design that is light and airy, and using materials that are more environmentally-sensitive than a standard building approach, we are certain that this will provide a wonderful environment for the children to enjoy the start of their learning experiences at (pre-)school. The school is already blessed with generous grounds to allow plenty of outdoor learning opportunities on a secure site, in addition to those offered in the building, and the pre-school group are excited about having dedicated facilities available.

By September 2008, the new building will be open for childcare from 7:30 a.m. to 5:30 p.m., rather than just the morning sessions that the Pre-School Playgroup have been able to offer previously. Formal pre-school sessions will be running in the morning and afternoon, with further options for childcare at Breakfast Club, Lunch Club, and After-School Club. The aim is that, from the start of term following the child's 2nd birthday, full-day care will be available to support those families where all parents/guardians are working full-time.



Extended services are also available at school, with the county's Children's Centre service offering sessions on matters of family health and welfare. Further details of these sessions will be advertised in due course. Once the Pre-School and Children's Centre services are up and running, we will turn our attentions to other activities that make the most of our new facilities, with learning opportunities for the wider community, such as the successful ICT Club that we have run. Clubs and sports activities to be run during the school holidays are on our radar, and we hope to start preparing those for 2009.

Word does seem to have got around already about the new facilities opening, and we have had a high number of enquiries for children to join us, so we would encourage any other parents/guardians of prospective pupils to contact us soon and arrange a visit. If you were unable to join us when the new building was open for the summer fair on June 28th, please call the school on 01525 220468 or email [eaton@deal.bedfordshire.gov.uk](mailto:eaton@deal.bedfordshire.gov.uk), and we would be pleased to show you around.

# Edlesborough Autos

Walton End Garage, Pebblemoor, Edlesborough,  
Nr Dunstable, Bedfordshire, LU6 2HZ

Telephone: 01525 222224

Facsimile: 01525 223113



**M.O.T. CENTRE**

**ALL VEHICLE SERVICING AND MAINTENANCE**

**Breakdown Recovery Service**

*Opening Hours*

**Monday-Friday 8:00am - 5:30pm**

**Saturday 8:30am - 1:30pm**



# **Carpet & Upholstery Cleaning**

**Professional & Local**

**All work guaranteed - not happy, don't pay**

**Powerful equipment means drier much  
quicker than other methods**

**100% Guaranteed no chemicals left in carpet  
when dry therefore will not easily resoil  
& perfectly safe for children & pets**

**Recommendations account for 90% of my work**

**Absolutely no hard sell**

**Telephone Colin for a Free Quote**

**DEEP-CLEAN**

**01525 851 811**

**[www.deep-cleaners.co.uk](http://www.deep-cleaners.co.uk)**

**Email: [cbthomas@ntlworld.com](mailto:cbthomas@ntlworld.com)**

**EDLESBOROUGH SURGERY 01525 221630**

**Cow Lane Edlesborough**

**Dr M R Jones, Dr J R Bell,  
Dr Stephanie Johnston, Dr Helena Verwey**

**We offer a full range of health services at the surgery**

**EDLESBOROUGH PHARMACY 01525 223181**

**Pharmacist - Claire Clarke**

**Friendly, reliable professional service at the pharmacy  
All doctors, dentists and hospital prescriptions dispensed  
Professional advice always available**

**Over the Counter Medicine**

**Special Orders on Request**

**A range of cosmetics/baby products/seasonal goods**





Quality Flooring  
and Installation  
at Affordable Prices

- ◆ **Laminate**
- ◆ **Real Wood**
- ◆ **Carpets**
- ◆ **Karndean Vinyl**

For a **FREE**, no obligation quote, please contact me, Michael Bishop,  
on either number and I will be happy to visit you in your home.



Master Fitter

"Excellent service and a beautiful floor expertly installed. I would highly recommend Aspley Flooring" *S. Stillard, Edlesborough.*

"Your workmanship has created a beautiful floor, I shall have no hesitation in recommending you or using your services again" *A Satisfied Customer, Edlesborough.*

t: **01908 587332** m: **07977 575010**

## 30 Years Experience Domestic & Commercial Security



- Burglar Alarms**
- Redcare Monitored Systems**
- Intercoms**
- CCTV**
- Access Systems**
- Locks**



CERTIFICATE NO. NAC/G/2113

**Quality Installations – Competitive Prices**  
**Insurance Approved** **Free Surveys**

# AAA SECURITY

## 01525 378222

Slicketts Lane, Edlesborough, LU6 2JD





**YOUR ONE STOP SHOP FOR:**

Hot Tubs/ Spas • Swimming Pools  
Pool & Spa Chemicals • Splash Pools

**AZURE POOLS  
& HOT TUBS LTD**

Leighton Buzzard Garden Centre, Hockliffe Road, Leighton Buzzard.  
Tel: 01525 854000 • [www.hottubs4u.co.uk](http://www.hottubs4u.co.uk) • [www.azure-pools.co.uk](http://www.azure-pools.co.uk)

# P. DYER ELECTRICAL

*For all your Electrical & Testing & Inspection needs*

- Re-wires
- Testing & Inspection
- Security Systems & Lighting
- LED & Low Energy Lighting
- Decorative Lighting
- PAT Testing
- Fuse Boards
- Under Floor Heating

Full insured, Part P registered, all work guaranteed. Fast, friendly, reliable, local electricians. For a free, no-obligation estimate, call Paul on:

Tel: 01525 222109  
Mobile: 07850 682815



## UNICORN WINDOWS

FREEPHONE 0800 092 5212

"WHERE QUALITY & SERVICE ARE NOT A MYTH"

**Windows**

**Doors**

**Conservatories**

**Guttering**

- Internally glazed for high security
- High security locks on all windows, doors and conservatories
- Full 10 year insurance backed guarantee



## UNICORN WINDOWS

Unit 3&4 Youngs Industrial Estate, Stanbridge Rd,  
Leighton Buzzard, Bedfordshire LU7 4QB

FREEPHONE 0800 092 5212

[www.unicornwindows.co.uk](http://www.unicornwindows.co.uk)





## **EDaN (Edlesborough, Dagnall and Northall) Project EDaN Update**

Calling all parents in Edlesborough Parish!

In the questionnaire that the EDaN Steering Group issued last year was a question on the priorities for future development of facilities in the villages. The answers the people of the parish gave told us that youth facilities were high on the list. In fact in fourth place overall for the parish. Over 60 people said they would support a club for those up to 11 years old. 70 people said they would support a club for teenagers and 17 adults said they would definitely volunteer to run it and 65 people said they would possibly volunteer. We don't know who you are so please contact us!

We are about to start up a Project Action Team to look at setting up a club or clubs for different age groups. If you are interested in joining this team or if you are interested in volunteering to help run it please use the contact details below.

Project Action Teams in progress

There are three teams that have started their activities from the 16 or so projects identified as priorities from the feedback you gave us. If you are interested in joining the following teams please use the contact details below.

Edlesborough Post Office (I hope you've signed the petition in the village shop!).

Footpaths and Pavements

Beautifying the villages

To contact us at EDaN please call Alan Williams 01525 221926 or Vicky Lee 01442 843361 or you can email us at [edanplan@yahoo.co.uk](mailto:edanplan@yahoo.co.uk)

Each month in Focus we will bring you more information on the teams and their status.

Thanks for your support.

EDaN Project Steering Group



## **EDaN (Edlesborough, Dagnall and Northall) Project PR/Press Officer needed**

Looking for experience in Public and Media relationships? We are looking for someone to help us get our information to our local community in the Edlesborough Parish. Working with the EDaN Steering Group the job doesn't pay much – in fact nothing at all! It will give an individual looking to develop their skills the opportunity to benefit from the experience gained on this activity. Some training/advice will be given from an experienced professional. We need a volunteer with good communications skills to work with local press, TV and radio to communicate our activities: in fact using all the media channels available. In addition this individual will help us prepare articles and briefing documents on our plans, actions and results. Please call Alan Williams, Chairman, EDaN Parish Plan Steering Group on 01525 221926 for more information and discussion.



# EDESBOROUGH TENNIS CLUB

Website by [LJptarwell](#)

[www.etctennis.org](http://www.etctennis.org)

Play tennis   Have fun   Socialise   Feel good   Join our club

Join via the website, or call Iona McLean-Hall on 01525 220562 for details



## Open Gardens

We were blessed with a lovely afternoon on 8 June when ten gardens opened to the public. The sunshine brought out the best in the gardens and in the relaxed social atmosphere of the event - it was great to see so many happy people around in our villages.

Thanks must go to so many people who worked to make the event a success – most importantly for those who opened their gardens and worked so hard to ensure they were at their best. Thanks also to those who gave up their afternoons to help at the gardens or at the Village Hall and those who donated prizes or plants, with special thanks going to Garden Scene Nurseries in The Rye. Finally thanks to so many friends from the villages and beyond who came and visited the gardens.

As a result of everyone's efforts the event raised over £2,300 to be shared by the Macmillan Cancer Support and St Mary's Roof Fund. We expect to hold the event again next year on 14th June. If the event inspired you to open your garden next year please get in touch with Gordon Gray on 220136.

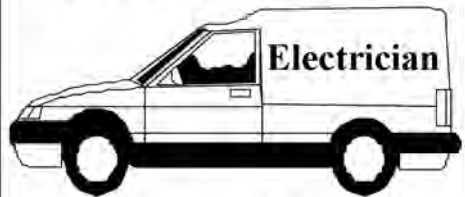




**M.J. BROUGHTON**  
**QUALITY DECORATING**  
*Interior and Exterior*  
 ALL WORK CARRIED OUT TO THE HIGHEST STANDARD  
 For a free estimate with no obligation ring  
**01525 - 222764**  
 8 SUMMERLEYS, EDLESBOROUGH.

**P.J. BRINKLOW**

**Electrical Contractor**



**Most types of electrical  
 work undertaken**

**Tel; 01525 220469**

**Mob; 07860 781330**

**43, Pebblemoor,  
 Edlesborough**

**Janes**

**Carpets and Flooring**



We carry a wide range of  
 Weaves, Twists & Natural Carpets Vinyl & Quick Step Laminate  
 KARNDEAN The warm alternative to WOOD & CERAMIC TILES

**AFFORDABLE & COMPETITIVE PRICES**  
**NO DEPOSIT**  
**INVOICE ON COMPLETION**  
**SAMPLE TAKE AWAY SERVICE**

We are happy to visit you at your home For a FREE no obligation quote.

**High Street Edlesborough Nr Dunstable Beds. LU6 2HS Tel: 01525 220208 [www.janesltd.co.uk](http://www.janesltd.co.uk)**

# CHARTERED ACCOUNTANT



**01525 221676**

**OPEN 7 DAYS / EVENINGS  
FRIENDLY LOCAL SERVICE  
VERY COMPETITIVE FEES**

**MIKE SUTCLIFFE, MBE**

Please visit my website  
[www.mikesutcliffe.com](http://www.mikesutcliffe.com)

213 CASTLE HILL ROAD, TOTTERNHOE, BEDS, LU6 2DA

## Lynwood Antique Restorations

With over 20 years experience  
in antique restoration.  
Specialising in traditional  
Antique Restoration,  
French Polishing, Turning,  
Leathering and Upholstery

All Cabinet making undertaken  
Trade or Private Welcome

**Simon Lewis**

T: 01525 222950/ M: 07788 755041

E: [simon@lyncot.co.uk](mailto:simon@lyncot.co.uk)



## *Patricia's Cuisine*

Catering For All Occasions

- Buffets, Dinners •
- Christenings, Weddings, Funerals •
- Promotions & Business Lunches •

*For Enquiries & Menu*

Meadside Farm, 104 High Street,  
Eaton Bray, Bedfordshire, LU6 2DP

**Telephone: 01525 222174**

## **BARRY CATO**

### **MOTOR REPAIRS**

*Servicing, repairs and  
MOT's arranged*

**Workshop at:**

r/o Norfolk House Farm, Harling Road  
Eaton Bray, Dunstable, Beds, LU6 1QY  
Tel: 01525 221681 (workshop)  
07836 650015 (mobile)

# SPOTLESS

## Domestic Cleaning Service

Weekly \* Fortnightly \* One-offs

- Fully Insured
- Family Run Business
- Free In Home Quote
- References Available
- Window Cleaning
- Carpet Cleaning:
  - For whole house
  - 2 Bed £60
  - 3 Bed £75
  - 4 Bed £85

Gary & Lorraine

**Tel: 01296 580203**  
**or 07909 934168**



## BRIAN'S SCHOOL OF MOTORING

grade 5 driving instructor  
pass plus registered  
excellent pass rate  
block booking discounts

**Tel: 01582 535689**

**Mobile: 07958 348086**

**Email: [bbates.1@ntlworld.com](mailto:bbates.1@ntlworld.com)**

**[www.briansschoolofmotoring.org.uk](http://www.briansschoolofmotoring.org.uk)**



**Blockpaving, Patio Specialists and  
Groundwork undertaken**

**Telephone 01582 704495**

**Mobile 07958 717248**

**Free Quotations**

# EDP

## EDLESBOROUGH DENTAL PRACTICE



- Cosmetic Dentistry
- Tooth Whitening
- Dental Implants
- Wrinkle Correction Therapy

11 cowlane | Edlesborough | Dunstable | Bedfordshire | LU6 2HT

**t:** 01525223175

**w:** [www.edlesboroughdentist.co.uk](http://www.edlesboroughdentist.co.uk)





Your Village

Estate Agents

The Complete Professional Property Service

Independently owned and established for over 30 years, fully staffed by experienced mature and professional people giving an expert and friendly service.

All village properties are on display and offered from our Dunstable and Eaton Bray/Edlesborough offices with advertising in Beds/Bucks/Herts and North London and via our excellent Website & Rightmove.

**Move with the name you can trust.**

65 Moor End, Eaton Bray

Tel: 01525 221313

[www.densons.co.uk](http://www.densons.co.uk)



rightmove.co.uk

The UK's number one property website

# GATES

Plumbing & Heating Ltd

Specialising in all types of  
Plumbing, Gas & Oil Heating

We now offer **Solar Heating** as part of  
our portfolio, please contact us for a free estimate

**Tel: 01296 670445**

Email: [plumbing@gates100a.fsnet.co.uk](mailto:plumbing@gates100a.fsnet.co.uk)

CORGI & OFTEC registered

# Wills, Probate & Lasting Powers of Attorney



**Tony Duke**, our highly experienced local consultant, will ensure your Will matches your specific requirements.

AT LEAST  
**10% OFF**  
with this ad

## YOUR PRIORITIES? YOUR REQUIREMENTS?

- the best provision for children
- minimum future long term care fees
- optimise Inheritance Tax avoidance
- protect home from an enforced sale

Probate administration and all documentation is prepared by Law Society regulated solicitors who specialise in Family Law. You receive a very personal IN - HOME service and the fullest legal protection. Fees are very competitive, including **over 20% off many Family Estate and Care Packages.**

CALL TONY ON:

# 01525 220644

for a daytime or evening appointment in your home.

A leading provider of solicitors' IN-HOME Will writing services in the UK



# PINSTripES

## SPECIALISTS IN SIGNS & GRAPHICS

CAR BIKE & VAN GRAPHICS

LORRIES HORSEBOXES

WHEEL COVERS

VEHICLE MAGNETICS

SIGN BOARDS

SHOP SIGNS

WINDOW DISPLAYS

STATIONARY PRINTING

VINYL TEXT & LOGOS

A BOARDS

BUILDERS BOARDS

PRINTED STICKERS & PHOTOS

LABELS

BANNERS-BUNTING-FLAGS

# 01525 220485

# 07973 167779

98 TOTTERHOE ROAD EATON BRAY BEDS LUG 28D

We come to you  
... you paint ... we glaze and fire ...  
and return to you one week later!

**Crockadoodledoo**  
Original ceramics... painted by YOU!  
Children's Parties • Hen Nights • Weddings  
Christenings • Girls Nights In • Take-away packs available  
Discounts available for large groups eg: schools, brownies  
Tel 01525 220382  
[www.crockadoodledoo.co.uk](http://www.crockadoodledoo.co.uk) [info@crockadoodledoo.co.uk](mailto:info@crockadoodledoo.co.uk)

# Curtains 4 u

Jan Robinson

Phone/Fax: 01442 843454  
Mobile: 0777 9029140

**Curtains with a certain Flair**

Very competitive rates for all your soft furnishing needs. Hand finished curtains a speciality. Alterations and own fabric work undertaken

# in good spirits mobile bars

tel/fax: 01525 220443

mob: 07702 712856

ellie@ingoodspirits.co.uk

www.ingoodspirits.co.uk

## HALL FOR HIRE

- Bar & Kitchen
- Discount for Villagers
- Membership Available

**EATON BRAY  
SPORTS & SOCIAL CLUB**

For Details phone:

**07709 725803**

cardio



strength



stretch



**DUNSTABLE CLASSES:**

**MON 7.45pm Northfields Sch**

**WED 7.45pm Queensbury Sch**

**TOTTERNHOE & EATON BRAY:**

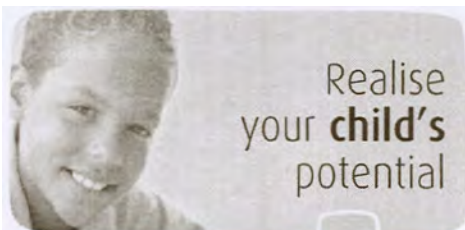
**THUR 9.30am St Giles hall**

**SAT 9.30am E B Village Hall**

Angela 01525 715208

# jazzercise®

*\*FREE CLASS WITH THIS AD\**



Realise  
your **child's**  
potential

### Maths and English After-School Programmes

Kumon programmes:

- work at a pace tailored to your child's needs
- give their confidence a real boost
- develop invaluable study habits and concentration
- complement the school curriculum

Contact your local  
Instructor today.

kumon.co.uk

Christina Wade  
DUNSTABLE  
STUDY CENTRE

**01525  
222505**

**KUMON**  
Every child can shine

## All Plumbing Repairs and Installations

**Domestic & Commercial**

- Dripping taps
- Sinks
- Overflows
- Cylinders & Tanks
- Immersion heaters
- Showers & Bathrooms etc
- Leaks, Bursts & Blockages
- Insurance work undertaken



**W&G** City and Guilds  
**GIG** Qualified Engineer



No call-out charge, free estimates

**D. NICHOLSON PLUMBER**

**01525 872335**

Mobile: 07976 975604

Glebe Farm Cottage, Dunstable Rd, Toddington

# **Eaton Bray with Edlesborough Parish News**

**Vicar: Canon Malcolm Grant**

**The Vicarage, 11 High Street, Eaton Bray - Tel: 01525 220261**

**Hon. Assistant Priest : The Revd John Heffer**

**35 Peblemoor, Edlesborough - Tel: 01525 220618**

The late spring has given us ideal conditions for the weeds to grow in our gardens. In the warm and moist weather they seem to spring up as soon as your back is turned, and we have to spend time pulling them up to prevent them choking the plants we want to grow in the flower-bed or the vegetable plot. A few minutes work while the weeds are young soon gets rid of them – even if there will be more in a couple of days' time. But if you leave them, the problem quite quickly becomes much more serious. The weeds intertwine with the other plants, and the roots get tangled up, making the removal of the weeds a great deal harder, and eventually unmanageable.

Leave them for a long time, and you are really in trouble. It doesn't take the weeds long to establish a complex network of roots down in the soil, and whenever you try to pull them out, there is always some root left from which new weeds grow in no time. Anyone who has ever tried to eradicate nettles, or couch grass, or ground elder knows the problem! It soon becomes a job for spade and fork, not just a trowel or a hoe.

Jesus used pictures from the world of gardening and farming to draw our attention to the realities of the human spirit. It is so easy for us to start developing bad habits – just like weeds springing up. We may become selfish among our loved ones, or greedy, or angry or irritable; we may begin acts of petty dishonesty, taking short-cuts which jeopardize the quality of our work, or gossiping about neighbours or colleagues – the list can go on and on – but if we don't weed them out quickly, they soon become entangled in the pattern of our lives. Then we have a real battle on our hands to get rid of them. Bad habits are like weeds, and we are constantly exposed to the threat of their entering our lives, just like weeds.

During the summer most have us have a bit more time to play with: the pressures ease up a bit, and we have our holidays and time to relax. Might it be a good idea to do a bit of necessary weeding in our own lives while we have the chance? Get rid of some of the bad habits that are beginning to put down roots in our own conduct and attitudes? Remember what happens in the garden if you leave the weeds too long. Anyone who has ever tried to get rid of a long-engrained bad habit knows how hard it can be – it can make dieting seem a doddle!

Think how much better life would be, not just for ourselves but for all the folk around us, if we could each eradicate even a few of our bad habits. How about it? Some summer-time weeding in our own lives? It will be well worth the effort – but don't keep putting it off. And have a good holiday.

MALCOLM

## **From the Parish Registers**

### **Confirmation – “May they daily increase in your Holy Spirit”**

11 June      Confirmed by the Bishop of Bedford  
Heather Sophia Potton  
Holly Diana Potton

**Weddings – “To love and to cherish till death us do part”**

31 May Adam Harry Manning Edwards and Katya Elizabeth Stilliard

**Funerals – “Grant them, O Lord, eternal rest”**

30 May Gordon Victor Sharpe of Knights Close, Eaton Bray

13 June Amos Alec George Lovell of South End Lane, Northall



**Services at St Mary’s Church**

**SUNDAYS :**      **8.00am** – The Eucharist  
                         **10.00am** – PARISH SUNG EUCHARIST (with Sunday School)  
                         **On Second Sunday of each month:**  
                         **10.00am** – WORSHIP FOR EVERYONE – a less formal service  
                         with Holy Communion

**WEEK-DAYS :** **2.00pm** (2nd Tuesday) – Toddlers’ Church  
**Wednesday: 9.30am** – Eucharist at All Saints’, Dagnall  
                         *EVERYONE WELCOME AT THESE SERVICES*

**All Saints’ Church, Dagnall - Services in July 2008**

Wed. 2nd July      7.45 pm      Bible Study  
Sun. 6th July      9.00 am      Eucharist  
                         10.30 am      Morning Service  
                         6.00 pm      Evening Service with Holy Communion

Thu. 10th July     7.30 pm      Eucharist  
Sun. 13th July     10.30 am      Morning Service  
                         6.00 pm      Circuit Service at the Methodist Church,  
                         The Square, Dunstable

Sun.20th July      10.30 am      Family Communion  
                         6.00 pm      Evening Service

Sun. 27th July     10.30 am      Family Service  
                         6.00 pm      Sung Eucharist

Sun. 3rd Aug.      9.00 am      Eucharist  
                         10.30 am      Morning Service  
                         6.00 pm      Evening Service with Holy Communion



Sunday School meets each Sunday at 10.30 am

**Totternhoe Pre-school News**

This term’s theme is ‘mini-beasts’ so we’re looking forward to all sorts of activities to help the children learn about these creepy crawlies. A good start was made on the first day of term with the discovery of snails on the playground slide.

There’s so much to look forward to this term – a sponsored bounce, dressing up day and, of course, our annual visit to snakes and ladders followed by a picnic, which is always a big hit with both children and parents.

This term’s open morning will be on Thursday 17th July, so please drop by if you’re interested in seeing the pre-school and the activities the children have been doing this term.

If you care for a child aged between 2 and school age and would like them to join in the fun, please call Kay on 07913 529 574. We run sessions Monday to Thursday in term time between 9.15 and 11.45 in Totternhoe Memorial Hall, Castle Hill Road.

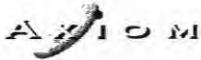
# Dunstable

47 Edward Street,  
Dunstable,  
Bedfordshire LU6 1HE

## WORKTOP SPECIALISTS

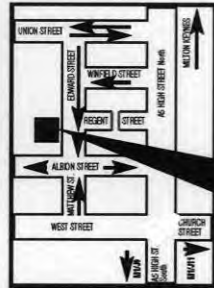


CUT AND EDGE SERVICE  
POST-FORMED WORKTOPS



Email: [sales@dunstablelaminates.co.uk](mailto:sales@dunstablelaminates.co.uk)  
[www.dunstablelaminates.co.uk](http://www.dunstablelaminates.co.uk)  
[www.toiletcubicles.co.uk](http://www.toiletcubicles.co.uk)

LAMINATES



WE ARE HERE

Send your  
specifications,  
drawings or sketch  
by fax or email.

Fax: 01582 608227

Tel: 01582 668973

## Computer Support & Services

- After-sales services and support
- Windows troubleshooting
- Upgrades and repairs
- Computer hardware & software sales
- Internet & email assistance
- Network installations
- Web site design
- Basic & individual tuition
- Home visits

Computamation Services Ltd

☎ Daytime: 01525 378939

☎ Evening: 01525 261381

email: [john@computamation.co.uk](mailto:john@computamation.co.uk)

## High Street Hair

Specialising in Advanced  
Colouring, Cutting & Styling Techniques.  
Professional Friendly and  
Affordable Hair Care For All Ages.

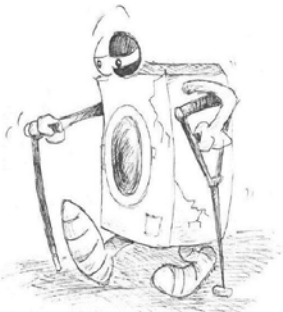


01525 221 252

66 High Street, Eaton Bray,  
Nr Dunstable, Beds

## WASHING MACHINE REPAIRS

ALSO  
DISHWASHERS, TUMBLE DRIERS,  
AND ELECTRIC COOKERS



Call  
**ANDERSON D.R.S.**

**01582 665764**

[www.andersondrs.co.uk](http://www.andersondrs.co.uk)  
SALES AND RENTALS AVAILABLE

Buy Direct From Our  
Own Farm

Master Card

VISA

From **Ivinghoe Turf**

- Commercial & Domestic
- Small Orders Welcome
- Bark, Grass Seed & Fertiliser
- Laying Service
- Discount on Larger Orders
- Screened & Blended Topsoil
- All Year Availability
- Forklift Delivery Available



ROLAWN<sup>®</sup>  
Approved Rolawn  
Stockist

Family firm farming since 1949

**ALL AREAS**

Freephone :

**0800 043 5061**

[www.ivinghoeturf.com](http://www.ivinghoeturf.com)

The Bungalow, Vicarage Farm, Ivinghoe, Leighton Buzzard

## AARON FENCING

ALL TYPES OF DOMESTIC & COMMERCIAL  
FENCING & DECKING WORK UNDERTAKEN

- FREE ESTIMATES
- FULLY QUALIFIED & INSURED
- PERSONAL SERVICE AT COMPETITIVE PRICES

**TEL: 01582 665779**

**MOBILE: 07798 927272**

7 STATION ROAD, DUNSTABLE, LU5 4HS

## ARC Contract Services Ltd

- Wallpapering and painting
- Laminate Flooring • Coving
- Tiling • Bathroom installations

Quality work at affordable prices  
Insurance work undertaken  
All work guaranteed for 5 years  
Public liability insurance cover



FOR FREE PROFESSIONAL QUOTATION  
CONTACT ADRIAN ON: 01582 539179 or  
07789 730580

## Garden Care

of Slapton

Traditional Garden Maintenance  
and Landscape Services

Free Estimates & Advice

Telephone Eaton Bray 221454

Mobile 078302 86837

## BURDETT BUILDERS

General Builders  
Plumbing • Heating  
& Electrical Engineers  
Specialists in Hardwood Joinery

**01525 222793**

# **Gas Boiler Servicing**

Over 30 years experience

Have your boiler serviced by a  
CORGI registered engineer from £60

Other services available:

Maintenance, repair and installation of all domestic  
gas appliances, including L.P.G.

Boiler installations, landlord safety certificates,  
power flushing, pre-purchase surveys and plumbing.

Free Quotes, no call out fee, and free  
friendly advice on all of the above

**Edwards Gas &  
Heating Services  
Eaton Bray**

**Tel 01525 220626**

Email:

**[stevethegas@orange.net](mailto:stevethegas@orange.net)**



# *TMS Chauffeur Services*

Luton	£18.00
Heathrow T1,2,3	£45.00
Heathrow T4	£50.00
Gatwick	£70.00
Stansted	£60.00

**London, Theatres, Stations,  
Ports. Distance no object.**

**For a professional reliable  
service call:**

**01582 667710**

# **Will Kimberley Garden Services**

**01442 255784**

**Phone for a free no obligation  
written estimate.**

**Fiona@wkgardenservices.co.uk**

- High hedges a speciality
- Overgrown gardens cleared
- Fences erected and repaired
- Tree Lopping
- Fruit tree pruning
- Shrub trimming
- General garden tidy up's
- In fact any job in the garden!

## **Stephen Brewer FCCA**

offers a friendly and personalised  
comprehensive service covering:

**Accountancy - Taxation**

**- Self Assessment -**

for

**- Individuals -**

**- Partnerships -**

**- Limited Companies -**

Advice from a qualified professional  
at an affordable fee

**For a free initial consultation at  
your home or workplace, phone:**

**01234 290333 or 07810 526286**

Bayler Wood Associates Ltd  
Chartered Certified Accountants

# **DELLS**

**UPVC WINDOWS  
CONSERVATORIES  
FACIAS and SOFITS**

**RING ANDY - 01442 826359  
MOBILE - 0795 738 6239**

**FREE ADVICE • QUOTATIONS**

# **TV VIDEO AUDIO REPAIRS**

**BOB SMITH  
EATON BRAY 221722  
ALL WORK GUARANTEED  
FREE ESTIMATES**

**GARDEN  
EATON BRAY  
SCENE**

THE RYE  
EATON BRAY  
BEDS LU6 2BQ

TEL 01525 220104  
FAX 01525 222077

**GARDEN SCENE FOR:**

**TOP QUALITY GARDEN PLANTS,  
TERRACOTTA AND GLAZED POTS,  
COMPOSTS AND FERTILIZERS,  
GARDEN ORNAMENTS AND  
SO MUCH MUCH MORE!"**

*\* ALL TOP QUALITY  
AT LOWEST PRICES \**

**Logs and Coal now being sold**



**OPEN 7 DAYS  
MON- SAT 9 - 5.30  
SUN 10 - 4.30**

**JOIN OUR FREE  
GARDENERS REWARD CLUB  
FOR EVEN BETTER VALUE**

**James B Chadburn MBHI**

**Fine Antique clocks & Barometers  
Specialist in repairs & restorations**

Movements / Casework / Silvering.  
Clock & Barometer parts sold.  
Valuations & Clock finding service  
Quality clocks & Barometers  
Bought & sold.



Telephone 01525 221165    Mobile 07790 000629  
E-mail: [jbchadburn@lineone.net](mailto:jbchadburn@lineone.net)



## Post Office Closures

Citizens Advice nationally has been playing a major role in the planning and public consultations over post office closures. With closures possible in this area scheduled for autumn 2008, our turn has come to participate in the planning process.

The government has decided that up to 2,500 post offices throughout the UK should close because of increasing financial losses and falling customer numbers. Additionally, 500 new "outreach" post offices, for example mobile branches, will open. Post Office Ltd claims that 90 per cent of customers will continue to use the same post office.

Post Office Ltd is responsible for deciding which post offices will close. Both rural and urban areas are affected. Outgoing sub postmasters will be compensated. Post Office Ltd has published a timetable of when they will bring forward proposals in each area of the UK. This can be found online at [www.postoffice.co.uk/networkchange](http://www.postoffice.co.uk/networkchange) or telephone 08457 22 33 44.

For more information contact the Citizens Advice Bureau, Grove House, High Street North, Dunstable. Tel: 01582 661384

Would you like to join our volunteers? Please contact the above number for more information on volunteering opportunities at Dunstable Bureau.

### Rebecca Baldock returns from Kagando

Many of you will remember the articles for Focus written by Rebecca Baldock, throughout 2006 and 2007, from Kagando Hospital in Uganda as a result of the fund-raising for the Hospital by the congregation and friends of St Mary's. Rebecca has now finished her 3 years in Africa and will be present at St Mary's on Sunday 10 August, at the morning services at 8am and 10am, where she will talk more about her experiences and to bring the thanks and love of those for whom she has been caring.

To help remind her of her time in Africa we hope, at the 10am service, to have pupils from Edlesborough School playing African drums to accompany our worship.

**Rebecca Baldock  
returns from  
Kagando  
Come and meet her at  
St Mary's, Eaton Bray  
8.00 am or 10 am  
Sunday 10 August**



### Edlesborough School Global warming Protest rhyme

Global warming has got to stop the ozone  
Goes and the earth gets hot.  
Use your legs and not the car.  
Why take a bath when you can  
shower instead.  
Have a holiday in the u.k  
And  
Don't fly all the way.  
Let's be smart and save our world  
By  
Using our head!  
Neel Charlie Chris Miles  
Year 5

# Dagnall News

## Over 60's

June saw us entertaining our friends from Kensworth Over 60's to our annual Ploughman's lunch. They had invited us last year to join them at one of their meetings. We had a most enjoyable afternoon together and the lunch was appreciated by all. Congratulations were expressed to the members who had contributed to the catering. In July we will be holding our annual Garden Meeting, subject to the weather of course. Grateful thanks are expressed for the kind invitation again from Mr & Mrs John Yorke.

Looking ahead we will be visiting the London Eye in August, which I'm sure will be well supported.

## Dagnall Church

Thank you to everyone who visited our cake stall at the Fete on 10 May. We raised £173.00 for Crossroads International.

At the takeaway breakfasts held on Saturday 7 June, £86.00 was raised. The next breakfast takeaway will be held on 5th July from 9.30 – 11.30 am at All Saints'. Bacon roll with tea/coffee £3.00; croissant/Danish with tea/coffee £2.00. There will also be a Fairtrade stall. We hope to see you there.

Future dates for breakfasts are: Saturdays 2 August; 6 September – same time, same place, with a Fairtrade stall.

## Dagnall Village Hall

See separate entries for The Fete report and Chairman of Village hall report

## Dagnall School

### Dagnall Fete

I went to Dagnall School Fete. The weather was great. There were some stalls. On the stalls there were some toys and games. We could play some games like football and there was a bouncy slide. There were cakes, hotdogs and burgers to eat. The school performed Activate. I was happy smashing plates. There were some old cars and bikes as well. Also, there was an ice cream van. I had a fantastic time.

By Jessica Yr2 at Dagnall School

## Dagnall Under Fives

The children took part in the Dagnall Fete back in May by marching to music around the arena in soldier's hats which they had made. A wonderful day was had by all; doesn't the sunshine make a difference?!

Thanks to fundraising efforts we now have new climbing equipment for our outside play area and the whole space has



been brightened with the addition of signs, wind chimes, mobiles and plants. It really is a lovely area for the children to enjoy.

As part of their topic on 'mini beasts' the children have enjoyed a visit from Wrigglies who brought in various creepy crawlies and reptiles for the children to look at and handle.

And finally as the end of the summer term fast approaches we would like to say goodbye and good luck to the children who will be leaving us to go to school.



---

### **Shimmy, Shimmy – Egypt comes to Eaton Bray !**

Don't know the difference between a hip drop and a camel step? Then why not come along to the Egyptian dance class held every Wednesday at Eaton Bray Village Hall from 7.00pm til 8.30pm. You don't need any previous experience – just a great sense of fun!

Over the weeks in the class you will learn the basic dance steps, progressing onto the more advanced moves of this ancient and interesting dance.

From ancient times this style of dance has been done traditionally by women, and is also known as Raqs Sharki. It is now one of the best ways to keep fit and supple, because of the gentle movements it is ideal for all ages – whatever shape or size you are. So don't just sit in and watch TV on

Wednesday evenings join me at the Village Hall, and I promise you'll have fun and your hips will do things you never thought was possible !!

Wear comfortable clothing i.e. T-shirt and leggings or a long skirt or anything that lets you move without restriction. Cost of class is £4 per person.

To book a place or for more details please contact – Soraya on 01525 853360 or 07976 964316 email: [colinandgerry.spoor@btinternet.com](mailto:colinandgerry.spoor@btinternet.com)

---

### **Age Concern Bedfordshire...**

is the largest older peoples' charity operating in the county of Bedfordshire. We work with and for all people over the age of 50, their families, friends and carers. We provide a range of services and support to enable people to make informed choices in their later years.

The range of services includes information and advice, benefits assistance, practical assistance around the home (Home Help and Handyperson/Gardening), leisure/clubs information and support. These run alongside our trading products specifically designed for the over 50's, which include all types of insurance, such as Home and Contents, Travel, Motor, and Motor Breakdown, Aid Call Alarms, Funeral Plans and Charity Flowers. Our services are delivered in a caring, friendly but professional manner, through our team of dedicated staff and volunteers.

If you or anyone you know would like to make use of any of our services or indeed wish to join us as a volunteer, please contact our office on Tel: 01234 360510.

**USE YOUR LOCAL POST OFFICE OR LOSE IT**

## Chairman & Treasurers Report - May 2008



I would like to thank all those who have helped to make this another very good year for our village hall.

This past year has seen our revenue grow and our costs reduced enabling us to increase our bank balance. Having a bit more money in the bank means we can make bigger investment decisions without worrying if we have enough left for the emergencies. The increase in revenue has in the most part come from the increase in our prices and particularly those paid by the Under 5's, which continues to be a major contributor for us. Use of the hall for private functions and for the numerous local groups has continued despite the price increase. We have also managed to maintain the investment in keeping the hall clean which everyone said was so important.

Our plans for some major re-development of the hall unfortunately failed to attract funding from the major sources of money. However this does not mean we have given up. I have now managed to enrol someone to take on the task of chasing down available funds so that we can progress the plan we all think is right. Activity on this will start in June and we will keep you informed of our progress.

One area that we have achieved some success this year is the raising of funds to improve facilities on the recreation ground. Development of the old barns on Main Road North has provided some funds for recreation facilities as required by planning rules under S106. We have also successfully managed to secure additional funds from a number of sources including £15.5k from Community Chest. This will allow us to develop a hard surface track around the football pitch. The track will be used for a number of activities including learning to cycle, push chairs, mobility vehicles as well as a standing area for people watching the football and the annual fete. My particular thanks go to Anne Thompson for some quick thinking and the successful application for the additional funds.

Other activities that are worth highlighting are:

- A tremendous amount of effort has been spent this year resolving the problems with the moles on the rec. I think we will all agree that the problem is now under control and the watchful eyes of Anne and a number of our Dunstable Road and Nelson Road residents will keep it that way.
- For the first time in many years the Village Hall committee organised a children's Christmas party. A number of residents helped to organise the event and this was very well received by everyone.

Unfortunately our secretary, Mary Powell and family have decided to emigrate and she resigned her role during the year. Our thanks have already been passed to her and we wish her well for the future. We managed to second Sharon Quinn onto the committee as Secretary and I hope you will support her formal election to the role today. Many thanks, Sharon for accepting the task. I would also like to thank Liz for her support as bookings officer and recognise this with a bursary payment as previously agreed at the 2007 AGM.

Again many thanks to everyone who has supported us during the year and we look

forward to more support and more successes in the coming year  
Richard Cutler, Chairman & Treasurer – Dagnall Village Hall

---

## **Beer Festival sets new records!**

Again, at the 5th Eaton Bray Beer Festival we saw record numbers turn up over Friday 6th and Saturday 7th June.

As usual, when we met on the Tuesday before the event the weather forecast was horrible. Have we got too many burgers, potatoes, beers, ciders, perry? And I, the panicking old GI, was the most worried of all, but wait, on Friday it got worse, poor Norman dropped something on his shin and had to excuse himself to go to the A & E for a bit of bandaging. Luckily apart from having to miss the event he is now fine. So we all juggled our duties and got going.

Saturday it looked dull until about 1pm when the sun came out as did a lot of people, families, serious beer drinkers and a lot of keen amateurs, Fancy trying to drink all 17 ales on offer!

When we dragged ourselves away at midnight on Saturday, 464 people had passed through the door and drunk all the beer, cider and perry, which our gallant CAMRA friends had supplied for the event, Over 280 burgers had disappeared into people's mouths, along with 125 sausages and numerous baked potatoes (they never count theirs precisely like us BBQ'ers).

A special thanks to Neil Hines who gallantly gave up half an hours drinking time to help us get some more burgers from their shop. A life saver to some hungry drinkers! The exact result will not be known for a few days, but will exceed last years £3400.

This will be going to Phase 3 which starts on August 4th so we will soon have a new kitchen (can we get a permanent BBQ in there Mr. Chairman?) a disabled toilet and a lovely meeting room. Where will we put the rubbish next year?

Having cleared the hall out on Sunday morning I spent a very pleasant hour on Sunday afternoon helping my neighbour by sitting on the gate at the Open Gardens event. I enjoyed all the praise about "my" beautiful garden. It was very difficult to admit that I was only the neighbour and had nothing to do with its beauty except to always feel guilty when they are lovingly tending their garden whilst I sit and read a book next door.

We are not stopping with Phase 3 as there is still plenty to do at the Hall, Our next event is the Quiz, Saturday 11th October, jointly with Tennis Club. We then get together again on November the 22nd for a spectacular Race Night. This should be a nice change.

We also run a 200 Club. This involves a max of 200 people paying £2 each month and every month there is a first prize of £100 followed by 4 prizes of £25 each. That is a 1:40 chance of winning. A lot better than the lottery. Do give it a go. Call me, Ross on 221411.

### **IS YOUR COMPUTER GIVING**

#### **YOU A HEADACHE?**

For all your home or business  
computer problems

**Contact Dave at A-rama (UK) Ltd at**

**The Book Castle, 12 Church Street,  
Dunstable, Bedfordshire LU5 4RU**

**Tel: 01582 605670 (9.00-17:30 Mon-Sat) or  
Mobile: 07850 777944 (9:00-21:00 Mon-Sat)**

# Act, sing and dance at Stagecoach



**AN HOUR TO ACT**



**AN HOUR TO DANCE**



**AN HOUR TO SING**

**S**TAGECOACH TEACHES children to act, sing and dance. We help them to stand well and move freely, express themselves more clearly, gain confidence and self-esteem—skills they learn for life. Schools open for three

hours at weekends during normal term time.

There is no audition—students need only to be enthusiastic and aged between 4 and 16.

For a Prospectus and more details please contact Wendy

Ashman at Stagecoach  
Leighton Buzzard on  
01525 222715



**STAGECOACH**  
THEATRE ARTS SCHOOLS

[www.stagecoach.co.uk](http://www.stagecoach.co.uk)



## J. LYDON and Sons Building & Ground Work Contractors

Mini Digger & Dumper Hire

Phone: 01525 877234

Mobile: 07855 321781

Email: [lydonj6@aol.com](mailto:lydonj6@aol.com)

Thinking about a new  
lawn, patio or complete  
garden makeover?

For a free, no obligation  
quote phone:

**David Gooch**  
**LANDSCAPING**

*& Gardening Services*

Tel: 01296 660628  
Mob: 07976 227785

**Garden Design**  
**Lawns • Patios • Driveways**



For all your plumbing  
& gas requirements

**01582 481525**

General Plumbing • Servicing • Breakdowns  
& repairs to Gas Boilers inc. L.P.G. • Gas Fires  
• Warm Air Heaters • Cookers • Unvented Hot  
Water Heaters • Central Heating Powerflushing  
• New Radiators • Cylinders and Water Tanks

**CORGI Registered & Fully Insured**

[www.plumbingandgas.org.uk](http://www.plumbingandgas.org.uk)





**BEFORE**



**& AFTER**



## **MISTY DOUBLE GLAZING ?**

**KEEP YOUR WINDOW FRAMES....**

**....WE JUST REPLACE THE GLASS!**

- UPVC • Aluminium • Or Wood

Because we replace just the glass the repair is a

**FRACTION OF THE COST**

of a complete replacement window.

# **QUALITY GLAZING SERVICES**

## **01525 876808**

**UPVC  
frame  
cleaning  
service  
available**

**We also replace Broken...**

- Glass • Handles • Hinges  
    & Locks

**and Repair... Patio Doors &  
Conservatories!**



# **REVIVE**

## **HOLISTIC THERAPY**

Holistic therapies are concerned with treatment through massage, manipulation and relaxation. They are not only treatments for one physical ailment or one part of the body, but also treat the person as a whole.

Ideal for today's stressful lifestyles.

Treatments include:

Aromatherapy Massage

Indian Head Massage

Reflexology

Reiki

Crystal Therapy

Also... Manicure / Pedicure

New: Reiki courses are now available. Why not learn how to become a Reiki Master so that you can help yourself as well as others.

Vouchers available, so why not treat a loved one or friend as well as yourself.

For more information or to book an appointment call Kate Meredith IHHT, RGN, on 01525221380

*Established over 10 Years*

# **Duncan Tomblin TREE SURGEON**

Forestry Contractor • Tree Felling  
 Crown Reduction & Thinnings  
 Deadwooding • Hedge Cutting  
 Stump Grinding • Site Clearance  
 Private Agriculture Fencing Contractor  
 Chipper & Stump Grinding Hire  
 Digger Hire

**FULL PUBLIC LIABILITY INSURANCE  
FREE ESTIMATES**

*'The Best Choice For Your Tree'*

**TEL: (01525) 221946**

**MOBILE: (07802) 410728**

**12 Greenways, Eaton Bray, Beds**



### **Edlesborough Under 5's**

**Monday - Friday**

**9.15 am - 12.00 noon**

**Tuesday & Thursday**

**12.45 pm - 3.15 pm**

*"The quality of teaching and learning is good. Children are actively involved in their learning, play independently and are assisted by staff to develop their confidence." "Group times at all sessions were very positive experiences for all the children and enjoyed by all present." "Children of all ages have the opportunity to develop their skills in all areas, supported by a dedicated staff team." "Children are encouraged to make choices and decisions throughout the day, supported by a staff team that know them well."*

These are just a few of the comments made in our fifth OFSTED Report (March 2008 - available via our website). The report reflects the high quality of learning on offer to all children at Edlesborough Under 5's and highlighted the quality of teaching by the staff. We are currently operating a waiting list for 2½ to 4½ year olds. If you would like to pop in for a look around, please phone Tina on 07854 939226 between 9am - 12 noon, to arrange an appointment. A warm welcome awaits you.

**For registration details, or to place your child on the waiting list,  
please phone Sue Pickering: Tel - 01525 222199.**

*"We are an Equal Opportunities Employer"*

**[www.edlesboroughunder5s.org.uk](http://www.edlesboroughunder5s.org.uk)**

### **Down's Heart Group**

I was interested to read in the June issue of Focus that some of the Edlesborough Book Group read The Memory Keeper's Daughter by Kim Edwards as their April book of the month and to note their summing up of the many themes running through this novel. Most poignant of course is the plea for disability to be recognised and accepted, which prompted me to write.

Here in our four villages I imagine that over the past 25 years at least, many people have had the opportunity to meet and get to know our residents who have Down's Syndrome, of whom I know there have been at least three in that time and I hope this has increased understanding, awareness and acceptance. I wonder how many of you though know much more about Down's Syndrome beyond the visible characteristics which make it recognisable?

For instance did you know:

About 1 in 700 babies are born with Down's Syndrome, which means roughly 2 every day here in the UK.

About 47% of babies born with Down's Syndrome also have congenital heart defects. Many require open heart surgery within 3 - 6 months after birth and may need further surgery later in life.

People with Down's Syndrome have a higher incidence of other medical problems such as Coeliac Disease, Thyroid Dysfunction and hearing and sight problems.

Given the advances in medical treatment, people with Down's Syndrome are now living longer. Many are going through mainstream education, passing GCSE's, finding

employment, living in supported accommodation away from their family and even getting married. (To see more of what is possible given support and encouragement visit these websites of just two of the inspirational young people I'm honoured to have met [www.karengaffneyfoundation.com](http://www.karengaffneyfoundation.com) and [www.sujeet.com](http://www.sujeet.com))

And how many of you were aware that Eaton Bray is the base for a small national UK charity which provides support and information for families and carers of people with Down's Syndrome who have heart problems? Down's Heart Group was started in 1988 by a group of parents and has been helping families ever since. I became involved after the birth and subsequent loss of my second son Daniel and the Group has been running from my home since about 1990.

We are not big and well known so we don't attract huge financial support like some other charities and being national we usually miss out on local grants which focus on a small area, but we are grateful to have had some support from the carnival. We do provide a vital service for families and without office overheads etc. we are great value for money, but like a lot of organisations lack of funds threatens our continued existence, so in just over 18 months time I hope to embark on a 10 month long fund-raising and awareness campaign. It would be fantastic to get some local support having lived in Eaton Bray for 22 years and my husband being Dagnall born and bred.

What I am hoping to undertake is a series of events / tasks which I can be sponsored for either individually or collectively. I'm willing to consider any suggestions but nothing too adventurous please as I've had surgery on both knees and did some irreparable damage when I broke my foot a few years back. The kind of things I'm thinking of are aerobatics in a glider, a balloon flight, driving a Rolls Royce, appearing as an extra on a TV soap, a tandem skydive, perhaps I could even do something at the village carnival? I'm hoping to be able to do most things for free or at reduced cost and to look for sponsorship to either help cover costs or as a donation. So if you've got any contacts that might like to get involved, please let me know, I'm planning to use my media contacts to get some good publicity over the months and will be more than happy to mention sponsors, wear logos etc.

Oh and I could probably do with someone to help manage all the planning etc. as I'll have to fit it all around my normal work for the charity - anyone fancy being my PA for the year?

Basically I intend starting on January 10th (the date it was confirmed I was pregnant with Daniel) and ending on November 13th (the day he died). Probably the final event will be a dinner dance to coincide with Down's Heart Group's biannual Conference when I hope to invite along many of the young people and families I've been privileged to know over the years.

Why 2010? Well on August 3rd I'll reach my half century and I've decided to try and put a positive swing on what will be a difficult day for me - NOT because I'll be 50 but because on that same day my Daniel would have been 21! So if you can help me to make 2010 a positive year celebrating my son's short life and the marvellous gifts people with Down's Syndrome can bring into our lives, please get in touch.

Penny Green, Director, Down's Heart Group, 17 Cantilupe Close, Eaton Bray, LU6 2EA

## A Priest For Fifty Years

The Reverend John Heffer had been ordained priest in St Albans Cathedral on Trinity Sunday 1957. On this Trinity Sunday, 18th May (by kind permission of the vicar, Malcolm) he was enabled to officiate at the 10 o'clock Sung Eucharist in St Mary's Eaton Bray. His son, Tom, (who is also a priest) was the preacher, who maintained in his sermon that priests were not the only people who had a calling; nearer the truth was that we all have a vocation, we just need to find it to be complete human beings.

John and his wife, Sheila would like to thank members of the Church and others for the way in which so many friends helped on that day to make it such a wonderful celebration. Their children, some had travelled long distances, were able to be there, which made it all the more memorable as they joined in the service and celebrations afterwards. This included some pretty powerful refreshments of various kinds and a special cake artistically encribed with the St. Alban's crest, together with the dates of John's ministry.

During the Service, Peter Bennett (an ex churchwarden) who had served with John through two interregnums said he felt qualified to speak on behalf of the many thousands of people who he thought must have benefited from this man's ministry, and presented to John and his wife, Sheila, on behalf of the parishioners a water colour painting of Eaton Bray St Mary's parish church\*, a handsome monetary gift and a hanging basket of flowers.

In reply, John thanked everybody who had contributed to the day, making it so special. Even more so, because membership of St Mary's Church, after retirement, had been such a fulfilling time. He had been so glad that members of his personal family had made the journey to be present for the occasion, and he especially thanked Sheila for her untiring support through the years. Vicar's wives, he noted, were sometimes left out of such celebrations. Their contribution is invaluable. It's not always such an easy position to be in - unpaid curate, and so on! A bishop, seeing Sheila rushing around after an event asked her what he thought was her role. She replied that John went in front of the flock, while she was like the little shepherd dog panting behind, who tried to keep the sheep together. Finally, after the Service, he and his family retired to the pub - actually, the Cock Inn, Wing, for a celebratory lunch.

John had served as a curate in Biggleswade and Clacton on Sea. He became vicar of Langford in 1961, and served further incumbencies at All Saints Luton, and Eaton Socon. Then in 1978 he left the full-time ministry for three years to work as a bus driver with United Counties, using his spare time to serve as a non-stipendiary minister with the vicar of Leighton Buzzard at that time, Canon John Scammell. In 1961 he became rector of Wingrave, then Wilden and returned in the last few years, before retirement, to work in the All Saints' Leighton Buzzard clergy Team. He finally retired to Edlesborough in 1995.

Note:\* Douglas Smith, a former member of St Mary's, was the artist who painted the Water Colour.

**Eaton Bray**  
**Parish Council Meetings**  
**1st Monday of every month**  
**7.30pm The Coffee Tavern**  
**Next Meeting: Mon 7th July 08**



## Edlesborough W.I.

Members were given an extra bonus at our last meeting in the form of a display of the work of our craft group. Mavis Purcell, assisted by Christine Yates, had arranged this beautiful exhibition of the outstanding work produced by our talented ladies. Mavis and Christine were thanked for setting up the display.

Before the main business, Mr Jim Wright of the EDaN project was introduced to us. He outlined the position regarding the closure (or not) of local Post Offices. After assessment a decision is made as to whether individual Post Offices are or are not on the list for closure. A consultation period of six weeks follows, during which time appeals can be made for the retention of local Post Offices. Final decisions are made shortly afterwards (around 17th September for this area). Individual letters of appeal can be written or petitions can be signed. There is a website for CAPOC (Communities Against Post Office Closures): [www.postofficeclosures.org.uk](http://www.postofficeclosures.org.uk) The Post Office should be used as much as possible - in fact: USE IT OR LOSE IT! Mr Wright was thanked for the information he gave us.

A certificate celebrating the 80th Anniversary of Edlesborough W.I., and presented at the recent B.F.W.I. Council Meeting, was shown to members.

As this was our resolutions Meeting, the two to go forward to the A.G.M. of the W.I. were discussed by members. These were outlined by Elizabeth Braiden. The first was worded:

“In view of the adverse effect on families of the imprisonment of people with severe mental health problems, this meeting urges H.M. Government to provide treatment & therapy in a more appropriate and secure residential environment.”

In the discussion on this resolution it was felt that prisons were not equipped for tending people with these problems. It was a disgrace that such care had been moved to prisons due to a decrease in mental health beds. Many of these people did not belong in prison. A vote was taken and passed, although it was felt that the wording of the resolution was somewhat unclear.

The wording of the second resolution was:

“This meeting asks H.M. Government to urge the E.U. to ban bottom trawling, which causes catastrophic loss of marine life.”

With regard to this proposal, it was agreed that this method was one of the world's most destructive fishing practices. As a result, 60% of the catch was thrown back dead. Marine reserves help, but there is only one in Britain, Lundy Island. We do need to know a lot more about this subject. Although most members supported the proposal, it was agreed our representative at the A.G.M. should use her own discretion in voting, if more information came to hand. Elizabeth was thanked for her help in these complicated subjects.

The evening ended with a tasty cheese and wine supper prepared by Ann Brinklow.

Thanks, Ann.

Val Harris

**Edlesborough  
Parish Council Meetings  
3rd Thursday of every month  
7.30pm Memorial Hall  
Next meeting: Thurs 17th July 08**

# Florence Nightingale Hospice Charity

Can You Do Any Of These?...

*Knitting, Crochet, Jam and chutney making, Cakes, Wood-turning, Greetings cards, Jewellery, Cushions, Wooden toys, French knitting, Mosaics, Cross-stitch, Fabric painting, Tie-dye, Candle making, Flower arranging, Glass painting, Sugar-craft, Model-making, Rugs and Patchwork.*

In today's modern world, there is still a real place for traditional crafts and we would like to get a group of like-minded people together who enjoy these practical skills and at the same time want to benefit their local hospice.

**Can you help us to form...**



*Supporting the Children's Hospice at Home Care Team*

We already know of some people in the community who regularly produce beautiful hand knitted or crochet baby clothes, blankets and other items for us to sell on our stalls. There are also the generous people who bake cakes and produce jams, marmalades and chutneys.

By bringing together your skills, we can raise funds to offer respite care to families with a sick child. Come along on Monday 30th June at 3.00 pm at our Chamberlain Road offices for tea and a biscuit, coffee and a chat, whatever level you are at, we are sure that we can benefit from your help.

**Sunday 6th July - London 10km Run** - a couple of places still left or sponsor those runners who have already signed up for this gruelling course through our capital

**Monday 14th July - Charity Golf Day at Oxfordshire Golf Club** organised by Paul Bown of Waterside Investments in conjunction with the fundraising team

**Thursday 28th August - Bucks Show** - Launch of our hospice Christmas Cards 2008

**Sunday 14th September - Ellesborough Golf Club Charity Match**

**Friday 19th September - 'Elvis' Tribute Night**

**Wednesday 24th September - AGM**

**Monday 20th October - Shendish Manor**

**Wednesday 10th December - Tree of Light**

**HELPWANTED!!** - *If anyone can spare an hour to help us with our street collections, please call us with your diary in hand or on Sunday 22nd June at Claydon House, we are looking for helpers - marshalls, stall holders and car park attendants. Ring 01296 429975 if you can help in any way.*

**Thank you.**



**Feeling hungry?  
Fancy a brunch made by  
someone else?**

Why not come and join us on Sats 5th July and 2nd August between 9.30-11.30 am at All Saints' Church, Dagnall for a breakfast takeaway. Bacon rolls with tea/coffee for £3.00; Danish/croissant for £2.00.

Proceeds in aid of Crossroads International, our Church project for 2008.





**Macmillan Cancer Support  
St. Mary's Church 2008 Charity**



# **Desserts and Divas Evening**

**Saturday 19th July 7.30pm**

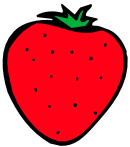
**Tickets Price £7.00**

A summer gala evening is to be held in South End Lane, Northall to raise funds for this very important charity. We invite you to bring along YOUR favourite dessert/pudding and sample other delicious desserts. Recipes of these to be provided if required. There will be music in the marquee.

We have been very fortunate that most of the members of the 'Just A Cappella' group have agreed to sing for us in two separate performances during the evening.

Price to include all the desserts you can comfortably eat, plus your welcome drink. Other drinks will be available throughout the evening.

All welcome. Tickets available from Lyn Stubbs 01525 220731.



.....you could pick bright red strawberries, dig orange carrots (forks provided!), pluck yellow sweetcorn from plants taller than most of you, get pods and pods of green peas, pick up a heavy blue skinned pumpkin, get purple fingers picking blackberries and lots lots more.....

**@ Grove Farm PYO, Great Gap, Ivinghoe, LU7 9DZ  
from approx mid June open daily 10 - 7**

for more information go to [www.grovesfarmpyo.co.uk](http://www.grovesfarmpyo.co.uk)  
or ring our answermachine 01296 668175



## Salvation Sound...July 2008

The motorway was crowded with cars, vehicles were moving, but at a snail's pace. Bumper to bumper, the lines of cars stretched as far as the eye could see. Stopping, then starting again, we edged forward. This really shouldn't happen - four lane motorways were built to keep traffic moving.

What was the cause? - yet another accident - careless driving - too much lane dodging - someone, tired at the wheel, fell asleep? Whatever it was, it certainly caused consternation. Before long, police cars and ambulances forced their way through the traffic. All was now at a standstill. !! Later in the day we heard on the radio, that several people had been injured - three had died.

As we travel on life's journey we would do well to be aware of the pitfalls that might befall us -swerving from lane to lane, doesn't mean that our destination will be reached more quickly. It is possible that because of poor judgement we could endanger the lives of others. Even the possibility that we are on the wrong road could cause us to veer across the path of other drivers.

What a tragedy it would be if our journey were cut short and we hadn't made the decision to follow the path of righteousness.

Not all roads are pleasant to travel on, some of the minor roads are quite bumpy, full of pot holes, quite dangerous in fact, We sometimes have to resort to map reading or 'sat-nav' to find our way - but the road of life has been smoothed for us, because of the one guide who has gone before us and prepared the way, His name is Jesus.

Remember when you make your journey to take along with you the guide line that you really need - your bible.

Many years ago, during the middle 1700's, a young medical student took up open-air preaching. His name was William Williams; for almost half a century his journeys took him over the mountains, roads and tracks of Wales, averaging some 3,000 miles a year. In those days he rode on horseback or walked; not for him the comfort of a car. Whilst travelling he managed, not only to preach the gospel but to write some 800 hymns, the greatest being, I think;

“Guide me, O thou great Jehovah,  
Pilgrim through this barren land;  
I am weak, but thou art mighty,  
Hold me with thy powerful hand:  
Bread of heaven,  
Feed me till I want no more...

Next time you are caught in a traffic jam, think of him, and try singing the words!

### **A note for your diary...**

The coffee morning on JULY 15th. will be held at NIKKI'S bungalow in Bower Lane. Not in the Salvation Army Hall. Please come along and support us if you can. 10am- 12 noon. You will be sure of a welcome.

### **The Salvation Army, Booth Place Weekly Activities**

#### **Sunday**

Sunday School	9.45-10.45am
Morning Service	11.00am
Evening Service	6.00pm

#### **Sunday Evening (1st and 3rd each month)**

Youth Group (age 12+)	7.45-9.00pm
-----------------------	-------------

#### **Monday**

Junior Club (age 8+)	6.30-7.45pm
----------------------	-------------

#### **Wednesday**

Home League (Ladies Meeting)	2.30pm
------------------------------	--------

#### **Thursday**

Baby and Toddler Group	9.30-11.30am
------------------------	--------------

#### **Thursday Evening**

Young Ladies Fellowship	7.45pm
-------------------------	--------

**(last Thursday in every month)**



## RETIREMENT

On Sunday August 3rd.; the morning service at 11am. will see us saying farewell to Lt.Cols. Brian and Dorothy Knightley who are retiring from service (again !!); we wish them a long, happy and healthy time together.

## WELCOME

On the 10th of August at 11am. we will extend a warm welcome to the newly appointed officers, Captains Ray and Linda Charlton; who will be residing at the quarters in Moor End Close in Edlesborough.

May their time with us be well blessed.

---



## Eaton Bray Lawn Tennis Club

The sun's shining brightly, there's a gentle breeze, the temperature's currently in the mid seventies (or mid twenties if you're one of those new fangled metric modernists), and being a Tuesday afternoon I've decided to head up to the courts to enjoy one of our regular weekly club sessions for an hour or two. I must admit I haven't played for a few weeks, but I've run out of excuses - there's only so many elderly relatives who can unexpectedly pop round at the last minute - and my waistband has subsequently expanded to a level whereby I'm having serious problems inside my shorts. I'm convinced that it's partly due to the move to metric when all the tennis trouser manufacturers messed up the inches to centimetres calculations, and so what I thought was a 38 inch pair of tennis shorts actually turned out to be a 34 inch, or something similar. Anyway with that and my slightly expanded midriff there's no way I can squeeze into these without giving my fellow players a very nasty shock, so it's up into the loft to find the 'fat boy' box into which I triumphantly threw all my larger clothes the last time I managed to lose a few pounds. Hmm, even the loft hatch has contracted since I was last up the stepladder; must be something to do with the central heating. And the ladder's developed a worrying creak too.

Right, ready to go. Nicely decked out in a pair of khaki shorts which spent a previous life as a circus tent, and an old grey t-shirt emblazoned with the slogan 'Glastonbury 1985' Fortunately I don't have any photographs of me from that era, mainly because no-one would risk breaking their cameras and take one. Imagine the big hairy guy from 'Lost' and you're getting near. Throw my racquet in my bag, chuck in a couple of cold cans of Stella for emergency refreshment, and head off.

It turns out perfectly; there are 12 of us, so three sets of doubles. We play the best of five games in each set before mixing ourselves up into different pairs and doing the same again. My partner and I stroll to a five-luv defeat in our opening set, which I was disappointed to find meant a lot of running around, mostly fetching balls that had whizzed past us. It's extremely hot still and I begin to regret leaving my favourite iron lung at home. Determined to put in a better performance in the second set, I find myself paired with one of the club's better players, who's very gracious and kind repeating phrases like 'oh bad luck', 'better luck next time' and 'what the blazes was that?' as he finds himself on the losing end of a set for the first time in several months. Still it was four-one so at least we got a game, I remind him – the one in which I don't think

I touched the ball once - which doesn't seem to appease his steely stare towards me. By this time my powers of speech are suspended due to my urgent need to use what little energy I have left, just to breathe. According to my heart monitor I should be in resus. So imagine my delight when a 13th person appears wandering up the path from the car park! They wouldn't want to sit out, would they? No sooner does she pass the clubhouse, I have my racquet packed away, my bag over my shoulder and am dragging myself off court in the general direction of my car in a somewhat haphazard manner due to my legs refusing to go where my brain is pointing them. After all, I don't want anyone else getting any ideas about an early bath! And anyway I'd locked them all in when I shut the court door.

Of course I'll be back. We have a lot of fun both on and off the courts, and no-one minds at all if you're a beginner! You could even pair up with me and teach me a few things! We have several social playing sessions every week plus coaching, competitions, league matches, and the most amazing ball-machine that has to be seen to be believed. It even has a remote control just like my telly, although my telly doesn't shoot tennis balls at me at 100 mph. Mind you, nor can the ball machine get BBC One, so each to their own. So do give us a call if you'd like to join us, even if just for one session to see if you like it. We'd love to see some new faces up there this summer.

For any further information about the club, including when we get together for our social tennis sessions up at the School Lane courts, or our various activities, please call either Chairman Ross Bagni on 01525 221411, Coach Nick Boys on 07810 832774, or if they're all out and I'm not having a little rest in my iron lung, me, Andy Cross, on 01582 477114.

---

## **Where is the Fattest Street in our Village?**

It's not only the nation that is becoming fatter according to Anglian Water. The arteries beneath our streets – the sewers – are becoming furred and blocked. Why is this happening? Because more and more sinks and drains are being used as an invisible dustbin.

Fats and oils in the sewer can cause costly blockages, resulting in sewage flooding. This can be very traumatic for anyone who experiences it, and can also be devastating for the environment and wildlife. Fats and oils in the sewer can attract rodents and slow down the flow of wastewater, increasing its scepticity and heightening the amount of odour experienced as a result, especially in hot, dry weather conditions.

The sewerage system plays one of the most important parts there is in protection of public health and is need of some protection itself. Do you know where your fattest street is?

### **Why are fats, oils and greases causing problems now?**

- Fat production for cooking has trebled since the 1960s.
- We eat out more, use more takeaways and eat more convenience foods.
- As emphasis on recycling and tighter controls on waste collection have grown the temptation to throw more waste down the sink or drain has increased.
- The amount spent on jetting costs to clean sewers has trebled in five years, according to Water UK.

## **How do sewers become blocked?**

- There is a view that you can pour hot fat down the sink or drain – don't! If you do it could cause a blockage resulting in sewage flooding in your home, your neighbour's or in the street – and if gets into a river or watercourses it can be devastating for wildlife.
- Hot fat quickly solidifies in the sewer and can become hard as rock taking specialist equipment to get rid of it.
- Cooking oil can mix with grit etc in the sewer.
- Abuse of sewers in this way can lead to increased rodents – in one trial that Anglian Water has carried out with WRC (Water Research Centre) in Chelmsford, the rodent population was significantly reduced when restaurants and takeaways took active steps to dispose of their fats, oils and grease responsibly – and there have been no cases of sewer blockages!

## **What should we do with our fats, oils and grease?**

- Collect fat and oil in a container which can be used to mix with seeds and nuts to feed birds.
- Scrape food waste from plates into a bin – do not jet wash or rinse them under a tap.
- Use an organic fat trap to soak up fat - this can then be thrown in the bin.
- If you have a fat fryer lobby recycling centres to install containers for the collection of cooking oil – at the moment they only seem to recycle motor oil.

\* Restaurants and takeaways should have their oil collected for conversion into a biodiesel. They can also use a grease trap which is changed daily or use an enzyme product which should be used carefully. According to Water UK food outlets are one of the main sources or problems that are experienced in town and city centres. Have you smelt a bad whiff walking down your high street? It's more than likely caused by fat in the sewer beneath your feet. Make sure your favourite restaurant or takeaway is disposing of their fats, oils and greases responsibly!

Ten per cent of the capacity of our sewers is being lost to fats and oils. This amounts to 10,000 tonnes, which if converted could make 10 million litres of biodiesel, enough to run 8,000 average family cars for a year.

Jetting out sewers costs £5million a year in the Anglian Water region. It is money literally down the drain, because unless we change our habits, no sooner has the sewer been cleared than the fat starts building up again. We are also trying to reduce our use of energy in the face of climate change. Regular jetting also takes its toll on brick sewers as in the case of one street in St Ives where the sewer collapses because of the mortar that is blasted out of the brickwork when jetting takes place.

### **Biodiesel partnerships**

The message is clear – help put sewers on a diet and don't sink your waste! Anglian Water is working with District Councils to combat the problem. Food outlets have been contacted by letter and have been asked to fill in a questionnaire outlining how they are disposing of their fats, oils and greases. They are being encouraged to have their oil taken away by reputable licensed operators. A reward scheme is also being launched in which those who are seen to have exemplary standards will be acknowledged through a sticker on the door and certificate so that customers and the local community can see that they are playing their part to protect the local environment.

**Stuart Ball**

**Ceramic Wall & Floor  
Tiling Specialist**

**Over 25 yrs Experience**



**City and Guilds  
of London Institute**

**Tiles supplied or Labour Only**

**For a reliable service call  
your Local Tiler**

**Eaton Bray 229381**

**N.D.S.**

**General Building & Plumbing**  
(Established over 15 years)

- Extensions - Loft & Garage conversions etc.
- Kitchens & Bathrooms fitted
- Installer of PVCu guttering, soffits & fascia boards
- Roofing • Patios & Block Paving

**Tel: 01525 221470**

**Mobile: 07941 563424**

*FREE ESTIMATES*

...

*NO JOB TOO SMALL*

*— Christopher —*  
**PALLET**



*Chartered Surveyors - Valuers - Estate Agents*

**Now firmly established in the villages of Eaton Bray & Edlesborough, Christopher Pallet is independently owned and run by Branch partners Colin & Linda who offer a friendly, professional, caring approach to the often stressful process of house moving.**

**3 Summerleys,  
Edlesborough, LU6 2HR  
Tel: 01525 222333**

[www.christopherpallet.com](http://www.christopherpallet.com)

**PUERTO BANUS  
MARBELLA  
SPAIN**



Recently built luxury 3 bedroom, 2 bathroom apartment approx 1 mile from centre of this well known Spanish marina. 45 mins easy driving from Malaga airport, served by Easyjet, Monarch etc.

Facilities include all mod cons including air-con, satellite TV, fully equipped kitchen, swimming pools, excellent clubhouse and tennis courts. Many golf courses and all weather bowling greens nearby. Climate makes this ideal for holidays throughout the year. Rates vary according to season (£300 - £750)

For a brochure and details call Peter or Celia on **01525 220173** or visit the website at [www.479losnaranjos.co.uk](http://www.479losnaranjos.co.uk).



## **Bellows Mill**

*Attractive self catering and bed  
and breakfast accommodation  
in idyllic surroundings of  
old water mill*

**Licenced for  
Civil wedding ceremonies**

**Wedding Breakfasts  
for up to 60 guests**

**For details phone 01525 220548**

**or email:**

**reservations@bellowsmill.co.uk**

**Website: [www.bellowsmill.co.uk](http://www.bellowsmill.co.uk)**

***HPC Registered  
CHIROPODIST & PODIATRIST***



*For visits in your home  
Phone: 07981 749038*

*(Also Central Luton surgery - open 6 days)*

**R.J.O'CONNELL  
BUILDING SERVICES**

**EXTENSIONS, PATIOS,  
DRIVEWAYS, ROOF REPAIRS  
AND PROFESSIONAL  
DECORATING SERVICE**

**TEL: 01296 681323**

**MOB: 07855 236726**

*Painting/Decorating Curtain Rails  
Kitchen Fitting Tiling Shelving/Flat Packs*

**YOU need LITTLE JOBS if**



Shelves scare you, flat pack frustrates you  
or mowing doesn't move you,  
you need someone to **Do It for You**

For your General  
Home Maintenance needs

**Contact Carl Bird on 01582 703039  
or Mobile 07773 230055**

*Floor Laying Gutter Cleaning Fencing  
Loft Boarding Gardening etc.*

# **Highlights of Minutes of the Eaton Bray Parish Council Meeting Held on Monday 2nd June 2008 at 7:30pm**

## **PUBLIC OPEN FORUM**

A number of residents raised concerns regarding a planning application for Dyers Road, Eaton Bray; the proposal of which is for change of use to small business use. Concerns were raised about the type of business planned, the access road being part of a bridle track, noise pollution and safety at the main road entrance.

## **THE VILLAGE POST OFFICE AND PREPARATIONS IN EVENT OF THREATENED CLOSURE**

The Clerk gave an update on the Post Office threatened closure. She informed the Parish Council that no confirmation of which Post Offices will be put forward for closure will be released until the 8th July 2008. It was agreed to put together a petition for residents to sign as preparation in the event of threatened closure, the petition to be placed in the village store Post Office and also on the Parish Council's stand at the Carnival in July. More information on Post Office Closures can be found on the Communities Against Post Office Closures (CAPOC) Website [www.postofficeclosures.org.uk](http://www.postofficeclosures.org.uk)

## **PARISH COUNCIL VILLAGE CARNIVAL STAND**

The Parish Council will be having a stand at the Carnival, with a number of Councillors present during the day and hope to meet and speak to as many people as possible.

## **TEMPORARY ROAD CLOSURE – EATON BRAY, SATURDAY 5TH JULY 2008**

The Parish Council have agreed to fund the advertisement for a temporary road closure order being displayed in the Bedfordshire On Sunday on 15th June 2008 in readiness for the St Mary's Village Carnival Procession on Saturday, 5th July 2008. The temporary road closure will cover The High Street and Moor End, Eaton Bray from around 12:15pm to 1:15pm.

## **POLICING FOR EATON BRAY PARISH**

The Parish Council are continuing to look into the options available for additional policing in the Parish.

## **CLERK**

The Clerk informed the Parish Council that the local police are looking at holding another Police Surgery (jointly with Buckinghamshire Police), on the 26th July 2008, venue/details to be displayed in due course.

The Clerk requests any items for the next Parish Council Meeting by Thursday 3rd July 2008.

## **EATON BRAY PARISH COUNCIL MEETING**

Next Meeting: Monday 14th July 2008. 7:30pm at The Coffee Tavern

Clerk Details: Mrs Heidi Head, 20 Good Intent, Edlesborough, LU6 2RD; Email [clerk@ebpc.co.uk](mailto:clerk@ebpc.co.uk)

Parish Council Website: [www.eatonbray.com/parish-council](http://www.eatonbray.com/parish-council)

## **VISIT FROM ANDREW SELOUS MP**

Another reminder of the visit to Eaton Bray Parish by Andrew Selous MP on Friday, 18th July 2008, from 11:30am-12Noon at The Coffee Tavern. He hopes to meet as many constituents as possible!

## **Edlesborough Parish Council (including Edlesborough, Dagnall and Northall) News**

### **Edlesborough Cemetery Access**

Invitations for Tenders to a revised specification are being sent out and will be considered by the Parish Council prior to works being commenced.

### **Play Around the Parishes Play Scheme**

Dates of events to be held on The Green, Edlesborough, Dagnall Recreation Field and Northall Village Hall green area are as follows:

**Dagnall** – Wednesday 30th July 10am-12.30pm: Friday 15th August 2pm-4.30pm:  
Thursday 28th August 2pm-4.30pm

**Edlesborough** – Friday 1st August 2pm-4.30pm: Monday 11th August 10am-12.30pm:  
Friday 22nd August 10am-12.30pm

**Northall** - Tuesday 5th August 10am-12.30pm: Tuesday 19th August 2pm-4.30pm:  
Wednesday 27th August 10am-12.30pm

Children aged between 4 and 12 years are eligible to attend any of the sessions but must be accompanied by a parent or guardian

### **PARKING IN EDLESBOROUGH**

Dropped kerbs have been installed throughout Edlesborough to facilitate wheelchair users and parents with pushchairs etc. to have a better route to the village shops but unfortunately some inconsiderate drivers are parking their cars either adjacent to or actually across these areas defeating the whole object of their introduction. The Parish Council would again ask particularly parents dropping off and picking up children from both the School and the Under 5's having their sessions in the Memorial Hall to use the two car parks available at the Memorial Hall or Pavilion or to allow their children to join one of the Crocodile Walks to School.

Edlesborough Memorial Hall Bookings can be made by telephoning Beverly Sage on 01525 229509

Lin Sargeant – Clerk to Edlesborough Parish Council – Tel: 01525 220859

E-mail: [parish.council.clerk@edlesborough.gov.uk](mailto:parish.council.clerk@edlesborough.gov.uk) Website: [www.edlesborough.gov.uk](http://www.edlesborough.gov.uk)

---

## **Chairman's Report (Part 2)**

### **Edlesborough Annual Parish Meeting April 17th 2008**

#### **My report covers the period May 2007 - April 2008**

This is the second and final part of the Chairman's report.

The first part was printed in the June issue of Focus

### **Footpaths/PPP Scheme**

The PPP representatives are Mr. & Mrs Thomas and a big thank you to them for continuing this important roll of keeping our footpaths open. Reported repairs necessary etc. continue to be carried out By Buck CC and The Chiltern Society. If we carry out any works we are reimbursed through the PPP scheme.

### **Rubbish Dumping**

When reported, Aylesbury Vale D.C. continues to react quickly, removing large items

of rubbish dumped in our hedgerows and gateways. The freighter service which allows you to remove difficult to dispose of rubbish twice a year, continues to be well used, larger items can be collected from your households by AVDC for a small charge. We still support the Green sack scheme for the disposal of garden rubbish these can be purchased from either Sue Parker Edlesborough or me in Dagnall

### **Dog Bins**

We continue to support the dog bin emptying scheme at a cost of over £4,000.00 per annum but we feel this is money well spent. We have recently installed a new bin in the High Street as a result of a request by the Safer Routes to School Team, but unfortunately some dog owners are still not clearing up after their dogs and the problem is getting worse in both Edlesborough and Dagnall, thankfully the majority of our dog owners are responsible and caring people who make good use of this very necessary facility. I would remind dog owners there is a £50 on the spot fine and up to £1000.00 fine if prosecuted.

### **Police Matters**

Our PCSO's Jackie Dobson & Chris Baker continue to support our community. They have brought friendly faces and a visible Police presence to our villages. Jackie & Chris initially patrolled together but now they have divided their area into two so its Jackie you will be more likely to see patrolling our patch although Chris won't be far away if needed. Our Community Police Officer PC Sarah Jepp provides that all important police back up for the PCSO's. Your efforts ladies on our behalf are much appreciated.

### **Community Events**

We continued to have stalls at the Dagnall Fete and St Mary's Carnival. Cllrs Julie Ratherham and Marilyn Pryce-Jones supported by the other council members are responsible for a huge amount of work behind the scene at these events, where we receive various comments on what you think we should or should not be doing as a Parish Council on your behalf, all these suggestions are taken onboard.

After a combined total of 45 years service to this Parish Sue & John Parker retired last August from their various Parish Council jobs. In recognition of this achievement the Parish Council have dedicated to them a Hornbeam Tree, which Sue & John planted on the green a couple of weeks ago and a plaque to commemorate this event was presented earlier in the evening. We welcome our new facilities and bookings manager Beverley Sage and Lesley Riley who has taken on the role of cleaner; I am pleased to report they are both doing an excellent job.

### **Public Transport**

A representative from the PC continues to attend transport meetings on your behalf. The Country Rider 162 which serves all three of our villages will now run twice daily Monday to Saturday inclusive to Leighton Buzzard. Once a day only for Dagnall residents in school holidays and on Saturdays, but usage is being monitored, if the school bus is used by adult passengers the twice daily option could also be implemented for Dagnall in the near future. 172 Cheddington – Dunstable continues as before on Wednesdays again this bus serves all three villages and the 175 Leighton Buzzard



to Hemel Hempstead also continues as before on Thursdays again serving all three villages. If you wish to keep these services please make good use of them, unfortunately the Milton Keynes shopping bus from Edlesborough was losing £100.00 per run even though it was subsidized, so that is why it has been axed. The 61 Aylesbury-Luton timetable hasn't changed but we do keep lobbying the bus company to call at Dagnall at least once a week.

### **Safer Routes to School**

My report wouldn't be complete without mentioning the excellent work our voluntary Safer Routes to School teams do; Edlesborough currently have 54 children on the walking bus scheme known locally as the crocodile bus and every morning come rain or shine you will see these chains of schoolchildren and their fully trained helpers making their way to school, making them fitter and healthier and also easing the traffic problem. Funding has been secured by the Team to upgrade the Ivinghoe Aston/Edlesborough Bridleway enabling the Ivinghoe Aston children to also walk to their school in Edlesborough, as previously mentioned Dagnall have also secured funds to get the school children away from the A4146. Well done to you all.

And finally I would like to inform you, the parishioners of the total agreed or received funding for leisure and recreational facilities this Parish has received in the past year. This total only includes monies the PC has had dealings with.

Edlesborough. Safer Routes to School £36,000, £1,000 & £5,000 Rights of Way £3,000: AVDC £5,000, BYO & C Fund £2,765, Football Foundation £255. Total £53,020.00  
Northhall S106 agreements Kircutt =£21,372, Beacon View =£4,153, WREN £20,000 & AVDC £5,000 Total £50,525.00

Dagnall: S106 £19,346, Safer Routes to School £20,000 AVDC Community Chest £15,500, Football Foundation £255 Total £55,101.00 which makes a Grand Total of £158,646.00

With that thought in mind I conclude my report.

**Anne Thompson**

**Chairman Edlesborough Parish Council**

---

### **Edlesborough Methodist Church**

The members of Edlesborough Methodist Church would like to thank all the churches in The Chiltern Downs Circuit, Local Churches, Stewkley Methodist, Local Organisations and Friends for displays, help and support during our '150th Anniversary Flower Festival' weekend. £1,000.00 was raised for The Bethany Trust and £350.80 for the Methodist Relief Fund Burma Appeal.

#### **Edlesborough Methodist Church 150th Anniversary Celebrations**

September 21st	Harvest Festival
October 11th	Concert Wesley Singers
November 29th	Christmas Bazaar & Coffee Morning
December 14th	Candlelit Carol Service

+ our monthly coffee mornings on the last Saturday of each month and our 'CAMEO' coffee morning on the 2nd Thursday of each month

## **Review of Dagnall Village Fete – 10th May 2008**

We finally had a summer fete – and it was such a relief to not have to chase around trying to catch gazebos caught in gusts of wind, and to not need to tip out the water lying on top of the tents... I think this was the first year we needed sun cream.

We are proud to announce our most profitable fete ever - £4965.55 – so close to that magic figure of £5k. It seemed that as the sun came out so did people's generosity – from those who sponsored us with goods and services to those who turned up to help set up, and stayed to clear away too.

The whole day went like clockwork – and we were so pleased to welcome so many of you supporting us. It had worried us being on the same day as Studham and Totternhoe – so gratifying that all three events were successful.

The Ellesborough Silver Band were in fine tune again this year, and the vintage vehicles in the arena sparkled in the sun, from the loving polishing they were getting. All the refreshment outlets had a steady stream of customers, the cake stall sold out early, all the activity stalls – china smash, football games and bouncy things wore out the youngsters very effectively.

The children of the playgroup and the school gave us lovely displays, and helped give the day a real feeling of community. Many people came back in the evening and enjoyed a Hog Roast on the recreation ground, thank you to Sally Thorne for organising this.

This year the money will help support village organisations, including £200 to Dagnall School's Centenary Celebration Fund (Jan 2009 for those who don't know!).

You may have to wait until 2010 for the next fete in Dagnall, but 2009 will not be allowed to pass without something for the community to get together for.

So from a tired but pleased Fete Committee, thank you once again – have a great summer!

---

## **Mothers Union May 08**

We had our usual delicious May tea at Dyers Road, as we celebrated five birthdays. Barbara came along to tell us some of her Beds and Herts murder mystery and ghosts stories.

In April 1937 Frank Cox was on his way to work using a cut through lover's lane. 20 – 30yds along the way, he saw a body, her clothes were disarrayed and she was obviously dead. Although she had struggled, it looked like a quick death with a knot tied around her neck. Local police and Scotland Yard soon found out she was Ruby Kleen from Leighton Buzzard. George Stone a former boyfriend had invited her to the local pub (Golden Bell) for a drink.

At his trial, he tried to tell all sorts of tales as to how she died and that he did not kill her. One being she was falling and he tried to save her with her scarf. Another he had already left her before she was killed. But all this was of no avail as he was found guilty. On Friday August 13th he met with the hangman's noose, and therefore paid for his crime with his life.

The afternoon finished with Grace being said.

Audrey Reynolds

www.

**DRIVESTYLE VANS**

.co.uk

Now you can buy our used vans directly via our website.



## LOW COST VAN & TRUCK HIRE

You Can't  Our Vans

Dunstable  
London Road  
01582 600465  
LU6 3DH

Milton Keynes  
Wolverton Railway Station  
01908 319777  
MK12 5TN

Flitwick  
High Street  
01525 715000  
MK45 1DU

**S E W S O F T**  
interiors



- ❖ Handmade Curtains and Valences
- ❖ Roman, Venetian, Vertical and Roller blinds, Cushions and Upholstery
- ❖ Tracks and Poles
- ❖ Everything beautifully made and fitted to the highest standards
- ❖ Exceptional personal service in your home, taking care of all the details, reducing your stress
- ❖ You can use your own or choose from a range of the latest fabrics as well as the more traditional favourites

Call me  
**Sue Hawkins on Whipsnade**  
**(01582) 873358**

**What do you have to sell?**

**Sell it on eBay!**

We'll Sell **ANYTHING** for You  
Make money from those unwanted items to hidden treasures  
Business enquiries welcome

**Nick and Emma**  
**01525 220256**  
Or visit us at  
**Buffalo House Collectable Pottery Centre**  
Mill Road Slapton

And enjoy our Aladdins cave of old and new pottery, Moorcroft, Martin Brothers, Torquay Mottoware, Muggins stoneware and much more



## DIGITAL & ANALOGUE

**TV & FM Radio Aerials**

**Satellite Installations**

**Extra TV & Satellite Points**

**FREE ESTIMATES**

**☎ 01525 852912**

**☎ 07710 429678**

## HAT TRICKS

*Weddings • Ascot • Special Occasions  
Hats to Hire • Hats to Buy*

*Your own hat trimmed  
to co-ordinate with your outfit.*

**Telephone 01582 873822**



## WESTROPE BROS.

**LAWN MOWER SERVICES**

*ALL TYPES GARDEN MOWERS SERVICED*

**THE RYE, EATON BRAY**

**Tel: Eaton Bray 220587**

## RD ELECTRICAL

Specialising in all types of Electrical and Air  
Conditioning installations including:

- ◆ Inspection and Testing
- ◆ Garden and security lighting
- ◆ Energy efficient lighting
- ◆ Re-wires
- ◆ Specialist lighting – bespoke designs
- ◆ Kitchen and Bathroom specialist

Air conditioning throughout your home  
All work guaranteed.



**Call Richard on:**  
**01525 221475**  
**07932 759680**



For a no obligation quote

**MOT  
TEST CENTRE**

**ROEBUCK GARAGE  
HIGH STREET  
EATON BRAY  
220385**

**McTimoney  
CHIROPRACTIC**



**Margie Craib** BSc BHSLDC AMC MMCA  
Human and Animal Treatments

Ashridge Farm, Ringshall, Berkhamsted, Herts HP4 1ND  
Telephone: (01442) 842729

General Chiropractic Council Registration No. 293



**Moren Associates Limited**

Newsletter Creation & Editing  
Book Typesetting  
Presentations  
Typing  
Document Reformatting  
Spreadsheets  
Adverts

Poster, Flyer & Leaflet Creation  
Basic Web Creation/Maintenance  
and more...

**Tel: 01525 229695**

Email: [enquiries@morenassociates.co.uk](mailto:enquiries@morenassociates.co.uk)

**[www.morenassociates.co.uk](http://www.morenassociates.co.uk)**

**ADRIENNE'S  
PRIVATE HIRE**

Call for a **FREE** quotation  
Book early to avoid disappointment  
Very competitive prices

Airport Transfers  
& Private Hire

**07980 039715**

Our executive Cars, 6 seater Minibuses and  
lady driver are all available



**GRASS ROOTS**

**GARDEN MAINTENANCE**

*Including*

**TREE SURGERY**

**SELECTION, SUPPLY & PLANTING  
OF TREES, SHRUBS & HEDGES**

*(Fully insured)*

**BRIAN McMAHON NCH (Arb)**

**Tel: 01525 221960**



**Rose  
Cottage  
Interiors  
for Quality  
Hand Finished  
Curtains**

Soft Furnishing, Interior Design  
& Upholstery Service  
*Fabrics available*

Handmade Curtain Specialist  
Swags & Tails • Pelmetts •  
Valances • Tie-Backs  
*Clients own fabric welcome*

**Jane Euston • Rose Cottage  
Northall Road • Eaton Bray  
Tel/Fax: 01525 221034**

*THE COMPLETE BUILDING SERVICE*

**S.M. REILLY & SON**

Established 1987

*GENERAL BUILDERS*

*Extension Specialists*

**Tel: 01525 221740**

**Mobile: 07970 637511**

Plastic Fascia & Soffit - Double Glazing  
Windows - Doors - Conservatories  
Decorating - Drives - Porches  
Barn conversions - Roofing

## **JMC PEST CONTROL**

Wasps Ants Fleas Flies

Rats Mice Squirrels 

All dealt with promptly

discreetly & efficiently

**ALL WORK GUARANTEED**

BUCKS BEDS HERTS OXON

TEL: 01582 - 471766 

MOBILE: 07973 - 407027

## **St Judes Clinic**

26 Lake Street, Leighton Buzzard  
Beds LU7 1RX

**Tel: 01525 377751**

Email: [enquiries@stjudesclinic.com](mailto:enquiries@stjudesclinic.com)

Web: [www.stjudesclinic.com](http://www.stjudesclinic.com)

Physiotherapy

Chiropody, Podiatry

Reflexology, Acupuncture

Nutritional Therapy, Pilates

Women's Health Service

Sports & Soft Tissue Massage

Your local health Professionals

Practice Principal

Moira D'Arcy MCSP

Member of  
The Organisation of  
Chartered  
Physiotherapists in  
Private Practice

  
Physio  
First



Tel

01525 222145

Mobile

07971 559185

# Lee Hutt

## Heating and Plumbing Services

FREE ESTIMATES GIVEN

NO CALL OUT CHARGE

ALL WORK UNDERTAKEN

INSTALLATION, REPAIRS

NO JOB TOO SMALL

DOMESTIC & COMMERCIAL



Ring Garry

**01582 477568**

Mobile

**07949 118011**

*Fencing Panels • Blockpaving*

*Shingle Drives • Paths • Slabs*

*Paving • Steps • Gardenwalls*

*New Patios • Relaying*

*Soak Aways • Drainage*

*Free estimates or advice*

*References*

# Trading Faces



*Unisex  
Hair & Beauty Salon  
and Chiropody Surgery  
(HPC Registered)*

*Open 11am til Late  
01525 229111*

**G.R. Davis** LCG

Eaton Bray  
*Cabinet Maker • Carpenter • Joiner*  
House Interiors  
Handmade Kitchens  
Can also supply and fit Crown Imperial  
kitchens, wardrobes and desks  
Home: 01582 600086  
Mobile: 07759 856566

## D & E HINES

**High-Class Butchers**  
**Quality Beef, Pork & Lamb**  
**Grade A Poultry**  
**BBQ & Sausage Speciality**  
*Renowned for 'Bunkers Sausages'*  
**Telephone: 01525 220413**

## CLEANING SERVICES

**- GREAT OUTDOORS & IN -**

*THE LOCAL COMPANY THAT CAN CARRY OUT  
ALL OF YOUR CLEANING NEEDS!*

### **PRESSURE WASHING**

- BLOCK PAVING & PATTERN  
IMPRINTED CONCRETE (PIC)  
REFURBISHED
- DRIVEWAYS/PATIOS/PATHS
- WALLS / FENCES
- CONSERVATORIES - HAND  
CLEANED (INSIDE / OUT)
- GRAFFITI REMOVAL

### **INTERIOR CLEANING**

- OFFICES & HOUSES
- BUILDERS CLEANS
- PRE - POST LET
- CARPETS & UPHOLSTERY  
(ALL STAFF PROCHEM TRAINED)
- HARD FLOORS  
REFURBISHED

**0800 298 5883**

**FOR MORE INFORMATION VIEW OUR WEBSITE**

**[www.greatoutdoorsandin.co.uk](http://www.greatoutdoorsandin.co.uk)**

**37 Oldhill, SW Dunstable**





## Eaton Bray Taverners Bridge Club

### New Venues

Please note that the bridge club now meets at the Methodist Church Schoolroom, Totternhoe Road, Eaton Bray each Friday 7.30 p.m. to 10.30 p.m. The lesson and practise sessions are now to be held at the Northall Village Hall on Friday afternoons from 2.00 — 5.00 p.m. from September 26th 2008 to May 22nd 2009. If you would like more details or would like to be found a partner please contact the club secretary on 01525 221779.

### An Impossible Contract?

These are the hands of all the players:

	♠ 9 7 6 4 3	
	♥ A 10 8	
	♦ A Q	
	♣ 8 7 6	
♠ Q 8 5		♠
♥		♥ K Q J 9 6 4 3
♦ K J 10 9 6 5 4 3		♦ 8
♣ Q 10		♣ J 5 4 3 2
	♠ A K J 10 2	
	♥ 7 5 2	
	♦ 7 2	
	♣ A K 9	

South as dealer opens with 1♠, West overcalls 4♦, North bids 4♠ and East 5♥. The final contract is 5♠ by South. West leads J♦. You can see all four hands, can the contract be made? Answer on the website: [www.watson-eaton-bray.freeserve.co.uk](http://www.watson-eaton-bray.freeserve.co.uk)

### Bridge courses

Courses for absolute beginners, improvers and advanced players are scheduled to start in September 2008.

Please phone 01525 221779 for more information.



#### Eileen Roberts.

We would like to thank everyone for visiting Eileen during her latter years and for the many messages we have received since her recent death. Thank you also to Rev. Peter Dudeney for a lovely service at Eaton Bray Methodist Chapel and to all the Chapel members for their help.  
Lesley, Terry and Christine.

#### Gordon Victor Sharpe

Sylvia, Julie and family would like to say a sincere thank you and much appreciation to all those who sent cards, messages of sympathy and donations to Alzheimers Society. Many thanks to all friends, staff at Greenacre Home, Doctors, Nurses, to Canon Malcolm Grant for the lovely service and Funeral Directors S.R. Dilamore Ltd.





A parent's thoughts on our playgroup:

**"My child attended Dagnall Under Fives for just over a year. As a parent helper I noticed that all the children seemed settled with excellent care, they enjoy a structured and stimulating routine to their mornings. All the girls working there showed a genuine interest in every child and meeting their individual needs. A good foundation towards the next stage in their lives. . . school!"**

We are a committee run playgroup operating five mornings a week 9:30  
– 12:00 for children aged 2½ to school age.

**If you would like to find out if your child would be happy here, please phone our Playgroup Leader, Ann Tobin on 07816 358 342.**



## **GYM & TONIC**

**WANT TO GET FIT, HAVE A HEALTHIER LIFESTYLE & IMPROVE THE WAY YOU LOOK & FEEL?**

The following can be provided in our Gym in Edlesborough or in your home

- \* A Health & Fitness Consultation \*
- \* Personal Training \* Massage \*

Ruth Anderson Dip. PT & ST, Member of: Inst of Sports Therapists & Register of Nutritional Therapists

**Tel:01525 223074 Mob:07812 163979**

## **A J WARING CARPENTRY SERVICES**

*Local, experienced, & Fully Qualified.*

*All Carpentry Jobs Undertaken*

Contact now to avoid disappointment.

**Phone/Fax 01525 240691**

**Mobile: 07902 542602**

**E-mail [andrew.waring2@virgin.net](mailto:andrew.waring2@virgin.net)**

## **BrierAnim**

Designer/Pattern Cutter/Dressmaker

Specialising in Bespoke Designer  
Bridalwear and Lingerie

Other Services available include:

Made-to-measure

Special Occasion Wear

Alterations

One-Off Designs

Freelance

To find out more about how  
we can help you with all your sewing needs

Contact

Anne Brierley on 01525 220809

or mobile 07886737881

Mercy Anim 07903865922

email : [annebrierley@btconnect.com](mailto:annebrierley@btconnect.com)

website : [www.brieranim.co.uk](http://www.brieranim.co.uk)

# Dagnall School

A Buckinghamshire co-educational school  
For 4-7 year olds



## Ofsted 2003

Pupils of all abilities make good progress and achieve well. Standards are consistently high in English, Mathematics and Science. The partnership with parents and the contribution of the community to pupils' learning is excellent.

## Dagnall school offers

- small classes with high quality teaching
- a secure and caring environment where each pupil is seen to be an individual and not just one of many

Each child is encouraged to achieve to the best of their ability and to develop an eagerness to acquire knowledge and become lifelong learners.

Come and visit our friendly school, meet our lovely children and dedicated staff.



Leadership in the Community  
awarded 2005



Awarded for a third  
time in Oct 2006



Website [www.dagnall.bucks.sch.uk](http://www.dagnall.bucks.sch.uk)  
E-mail [office@dagnall.bucks.sch.uk](mailto:office@dagnall.bucks.sch.uk) Tel & Fax 01442 842473

## **J.G.S. Metalwork & Son**

### **Specialists in Gates & Gate Automation**

Access Control • Security Grilles • Railings  
Balconies • Weathervanes

**www.jgsmetalwork.co.uk**

Call in to discuss your ideas

High Street, Edlesborough LU6 2HS

Tel: 01525 220360 Fax: 01525 222786

## **Pressing Need**

### **Ironing, Laundry & Dry Cleaning Service**

Free Collection & Delivery  
from home or office

Executive Shirt Service (Wash & Pressed)

Duvet Service (washed and dry)

For more information or to book a collection

call **01582 667332** or **07885 320042**  
or email: [ironout@aol.com](mailto:ironout@aol.com)

## **COFFEE TAVERN**

**High Street, Eaton Bray**

Hall for hire suitable for  
approximately 50 people with  
kitchen facilities available.

Also two smaller rooms ideal  
for committee meetings

**FOR BOOKINGS:**  
**PHONE SYLVIA HIGNELL**  
**ON 01525 220891**

# **Absolutely Plastered**



**DOMESTIC/COMMERCIAL, CLEAN AND RELIABLE SERVICE,  
FREE ESTIMATES, FRIENDLY ADVICE**

- \* Plastering & Coving
- \* Floor Screeding
- \* Pebbledashing & Rendering
- \* Dry Lining
- \* Cornices & Mouldings
- \* Insurance Work Undertaken

**CALL NICK CONWAY ON**

**Mobile: 07751 830716**

**Tel: 01525 221877/01442 269565**

26 School Lane, Eaton Bray, Dunstable, Bedfordshire LU6 2DT



## Illustria Kennels & Kathotel

**Mick and Denise Garrod**  
Proprietors

Offer your pet a fully licensed Dog  
and Cat boarding service

Purpose-built Dog kennels

Individual Cat chalets with  
outdoor exercise runs

All in pleasant country surroundings

**WELLHEAD BUNGALOWS,**  
**TRING ROAD,**  
**DUNSTABLE,**  
**BEDS LU6 2JU**  
**TELEPHONE:**  
**(01582) 665343**



## Neil Hodson Associates

Consulting Structural Engineers

**24 HIGH ST TRING**

OFFER A COMPREHENSIVE RANGE OF  
**PROFESSIONAL BUILDING DESIGN,**  
**ADVISORY AND DRAWING SERVICES**

From plans for domestic extensions to  
multi-storey offices, commercial  
buildings and factories.

Structural surveys, site surveying,  
advice on building defects and  
Feasibility Studies

Planning Applications and Building  
Regulation Consents obtained.

**Tel 01442 890894 OR**  
**Edlesborough 222462**

## KEITH GRADLEY ELECTRICAL

83 High Street, Eaton Bray  
Tel: Eaton Bray 222303  
Mobile: 07976 640869

For all Domestic, Commercial and  
Industrial Wiring and Plumbing  
Storage Heaters, Showers etc.  
Security Systems Installed  
Test and Inspections  
Free Estimates and Advice

## ALAN BARNARD BUILDING REPAIRS

**40** ESTABLISHED 1967 **40**  
**NO JOB TOO SMALL**

- ALTERATIONS & REPAIRS
- NEW KITCHENS & BATHROOMS
- BUILT IN WARDROBES
- PAINTING & DECORATING
- U.P.V.C FACIAS & SOFFITS
- WOOD OR U.P.V.C DOORS & WINDOWS
- WOODWORK

**20 WELLHEAD ROAD**  
**TOTTERNHOE, BEDS**

**01582 609726 & 07774 247658**

**YOUR LOCAL DRIVING SCHOOL**

## Mini Manoeuvres

Competitive rates • Brand new mini  
Patient, friendly instructor  
Discount for block orders  
Available 6 days a week • Pass plus

**For more information call Kevin:**  
**01525221519 07931535519**  
[www.minimanoevres.co.uk](http://www.minimanoevres.co.uk)

**Consoles  
Games  
Accessories**

NINTENDO DS

**Don't pay  
high street  
prices!**

Wii

**FREE  
Local Village  
Delivery**

Postage refunded through Paypal

XBOX 360

**splat**  
gaming.co.uk

PSP

**Can't find it?  
Ask us!**

Contact Angela Bennett on  
01525 222659  
angela@splatgaming.co.uk

**Fun for all  
the family!**

www.splatgaming.co.uk



# VANSAR BLINDS

Domestic and Commercial Specialists  
In all types of Blinds and Awnings

Family Business est. since 1984

- ◆ Vertical
- ◆ Venetian
- ◆ Rollers
- ◆ Wood Weave
- ◆ Roman
- ◆ Pleated
- ◆ Wood Venetian
- ◆ Conservatory Blinds
- ◆ Patio Awnings

**For a Friendly & Reliable Service  
Free Measuring and Quotations**

Supply and Fitting

Contact Mark Allen

on

01525-220477

07711 257473

Weddings \* Birthdays \* Anniversaries  
 Funerals \* Social Functions \* Balloons  
 Corporate Contracts \* Fashion Jewellery  
 and much more ...



For all your floral requirements

Full Teleflorist member deliveries worldwide

**Opening Times**

Monday – Friday 9.30 am – 4.30 pm  
 Saturday 9.00 am – 1.00 pm  
 Sunday closed

2 High Street, Edlesborough, Beds, LU6 2HS

**Tel. 01525 221920**

Email: Sam@budsOfMonthlorist.co.uk

**MICHAEL HUBBINS**

**TELEPHONE ENGINEER**

Installation of Telephone Extension Sockets  
 Digital, Satellite & Internet Sockets

Also Domestic Electrical Work Undertaken

**Tel: 01582 471648**

**Mobile: 0771 8834851**



**Stephen D.  
 Janes  
 Est. 1982**

**CARPENTRY, JOINERY  
 KITCHENS FITTED  
 PROPERTY MAINTENANCE  
 TELEPHONE: 01525 220649**

**Woodside Clinic**



Providing a genuine &  
 caring local service since 1988

OSTEOPATHY, PHYSIOTHERAPY, ACUPUNCTURE,  
 PILATES, CHIROPODY/PODIATRY,  
 ALLERGY TESTING, MASSAGE THERAPY,  
 HYPNOTHERAPY, VARIOUS HOLISTIC THERAPIES

*Treatment for*

NECK PAIN, SCIATICA, SPORTS INJURIES,  
 SPONDYLOSIS, 'WEAR AND TEAR', HEADACHES,  
 SHOULDER PROBLEMS AND FOOT COMPLAINTS

Clinics in **Dunstable, Leighton Buzzard & Shefford**

For more details please call:  
 01582 608400  
 or 01525 372447

[www.woodsideclinic.co.uk](http://www.woodsideclinic.co.uk)

**Anne Johnson D.O.**

**Registered Osteopath**

6 Moor End, Eaton Bray

**01525 221958**

**07957 250682**

Daytime and Evening

Appointments Available



**Digital +**

**Aerial & Satellite Systems**

Tel: 01525 237498  
 Mobile: 07970 260518



[www.digitaltelly.tv](http://www.digitaltelly.tv)

# Edlesborough School



## *Choosing the most appropriate school for your child is a very important decision*

Edlesborough School is a co-educational village school for children from 4 to 11. We provide the benefits of a continuous primary education and the broad experience of a highly professional and caring staff. Our aim is to help all children achieve their maximum potential as individuals and as members of society.

***'Overall academic standards are very high'***

***'Pupils make very good progress'***

***'Pupils are very well behaved, want to learn and work hard to meet the many challenges they are given'***

(OFSTED 2003)



We would welcome the opportunity to show you round our friendly school.

Please ring Janet Hatfield on 01525 220431

Fax 01525 221819 [www.edlesborough.bucks.sch.uk](http://www.edlesborough.bucks.sch.uk)



## Eaton Bray Cricket Club

Hat-tricks and hundreds don't come along too often. Certainly very rarely do they happen in the same game. Poor old Newport Pagnell copped both! Michael Jarrett recorded his second ever league hat-trick in his 31 seasons of toil, and Wes Hosking scored his first century for the club. The amiable Aussie who couldn't top fifty last season is now the league's leading run scorer in

2008.

Bowler Gary Ellerton is matching Wes, knocking over the stumps more regularly than any other bowler. Not surprising really as Gaz is quick. Gary's best performance was against Milton Keynes Village when he took 5 wickets whilst conceding just 7 runs. The first team has made an excellent start to the season and leads the first division at approaching the half way mark. It is however a different story for the Saturday seconds and the Sunday friendly team. Both teams are struggling. Player availability causes problems for both teams, as the first team takes priority for both individuals and the club. But both teams have given opportunities to the newcomers. Ben Martell and Steve Shepherd have performed well with the ball, Dave Hopkins and Glen Hearn have consistently scored runs, however Jason McDermid has yet to have cause to blow his own trumpet!

Every year the cost of running and improving the club increases. The club is very fortunate to have within its ranks skilled and willing handymen, keeping the overall costs down. In addition it is extremely grateful to the two sponsors Hawkins Transport and M&M Properties. The extra financial support allows the club to maintain its high standards and playing facilities. The club wishes to thank all those that support the club in anyway and wishes to remind everyone that the 100 club is due for renewal!

MJ

### Eaton Bray Cricket Club 100 Club Winners

May 2008

£25 James Flecknell No.87

£10 Colin Campbell No.70

Eaton Bray Cricket Club is kindly sponsored by F.A. Hawkins and M&M Properties

### NORTHALL BAPTIST CHAPEL

Chapel Lane, Northall

(just beyond the speed limit signs on the road to Leighton Buzzard)

Everyone is welcome to our Sunday worship each week between 11am and 12.30pm including tea/coffee and time to talk together For more information contact: Steve and Helen Orchard 01525 373106

There has been a Baptist Chapel in Northall for more than 200 years. Today we continue to seek to worship God, serve him in our daily lives and support and encourage one another in the difficult and the joyful times.

**USE YOUR LOCAL  
POST OFFICE OR  
LOSE IT**



## EXCHANGE & MART

### FOR SALE

#### Singer Sewing Machine

Working Condition

Caller collects £5 or nearest offer

Ring 220482

### FOR SALE

#### Mothercare Chester Cot Bed

2 position mattress base

converts from cot to toddler bed  
includes mattress and fitted sheets

£80

#### Angelcare Sound & Movement Baby Monitor Model AC201

boxed and instructions included

£40

#### Fisher Price Funfair

Incl. roller coaster, spinning cups ride,  
aeroplane ride, big wheel and people

£7

01525 221806

### FREE TO A GOOD HOME

#### 3 Breastfeeding Tops

1 rugby style long sleeved,

2 short sleeved

size: medium (12-14)

01525 221806

## HOLIDAY LETS

### JAVEA – COSTA BLANCA SPAIN

Newly modernised traditional Spanish  
apartment set in gated communal area  
with landscaped gardens and large pool,  
close to beaches and all amenities.

Sleeps 4; one double and one twin  
bedded room; comfortable lounge and  
balcony.

Telephone 01525 220448

for brochure/details

## HOLIDAY LETS

### Sheplegh Court

#### Nr Dartmouth, South Devon

Lovely two bedroomed apartment in  
country house set in 30 acres of gardens,  
woods and parkland. Facilities available  
include:

- Heated outdoor swimming pool with  
sun terrace and barbecue area (summer  
only)
- Conservatory overlooking the gardens  
and parklands
- All weather tennis court.
- Snooker room with full size table
- Small indoor pool, jacuzzi and sauna

Secluded position on outskirts of award  
winning village yet within 3 miles of  
beaches and Dartmouth Golf and Country  
Club. Available for weekly letting or for  
three plus days out of season.

**For further details please telephone  
01525 220957 evenings and weekends**

### MENORCA – CALA'N PORTER

Light, airy, comfortably furnished  
apartment; balconies front and rear;  
great location centre village; sleeps 4;  
one double bedroom, one twin-bedded  
room; large communal pool in private  
grounds.

**Tel: 01525 852368/07914 011241  
for brochure/details**

### MENORCA – CALA'N PORTER

3 bedroomed detached villa with own  
pool; close all amenities but quiet  
location; sleeps 6 - two twin-bedded  
rooms; shower room; double room with  
en-suite

**Tel: 01296 682326  
for brochure/details**

## **EATON BRAY VILLAGE HALL**

**LARGE & SMALL HALL,  
MEETING ROOM, STAGE,  
KITCHEN, LARGE CAR PARK**

**SUITABLE FOR ALL KINDS OF  
EVENTS:-**

- WEDDING RECEPTIONS
- CHILDREN'S PARTIES
- KEEP FIT, BADMINTON
- STAGE PLAYS ETC

**TELEPHONE TO BOOK  
YOUR EVENT ON:-**

**01525 222831**

**07975 797202**

**KEYS TO BE COLLECTED  
BY ARRANGEMENT**

## **Marc Flack**

**Decorating & General  
Maintenance**

A friendly, reliable service

Painting & Decorating

Gardening

Any other odd jobs!

Local references available

**No job is too small!**

**10 Wivelsfield, Eaton Bray**

**01525 223166**

*CSL*

*Charvet Services Ltd*

## *Plumbing & Heating Engineer*

*40 years experience/CORGI registered*

*Full central heating installation, boiler changes, all heating repairs*

*Landlords Gas safety certificates*

*Complete plumbing service - bathroom refurbishments including tiling  
and electrical work*

*Underground drainage/blocked pipes etc.*

*Free Quotations • No call out charge • No payment until complete satisfaction*

**Telephone: 01525 221052 - Mobile: 07721 625887**

# K.A. RAY LANDSCAPERS

FOR ALL OF YOUR COMMERCIAL AND DOMESTIC LANDSCAPE  
REQUIREMENTS

Professional Landscape maintenance and construction company

**Qualifications; National Diploma in Horticulture**

**As seen on ITV**

**RHS medal winner**

As a company we specialise in:

- Commercial landscape maintenance
- Domestic landscape construction
- Hedge cutting
- Lawn establishment and maintenance
- Garden maintenance
- Garden clearance
- Garden makeovers
- Border maintenance

In fact we can undertake most work in the garden or  
commercial estate and we are fully insured

Contact us on:

**01525 221037** [k.a.raylandscapers@hotmail.co.uk](mailto:k.a.raylandscapers@hotmail.co.uk) **07800888120**

Free estimates and advice

Trevor Yeardye



LUXURY BATHROOMS

*DESIGNING AND INSTALLING  
BEAUTIFUL BATHROOMS IN  
HERTS, BEDS AND SOUTH BUCKS  
FOR OVER 20 YEARS.*

*"A Family Business"*

*Tel - Trevor Yeardye: 01442 890835*

*Tel - Clifford Yeardye: 01525 220419*

*Please visit our website to view our  
online portfolio:*

*[www.trevoryeardye.com](http://www.trevoryeardye.com)*

## Kingsley GARAGE DOORS

- All types & makes of door  
supplied & fitted
- Steel, timber, glass  
reinforced polyester (GRP)
- Sectional doors - an ideal  
solution for short driveways

*Electric operators from £300 fitted  
Automate your existing garage door*

**PROMPT REPAIR SERVICE**

**CALL 01525 221058**



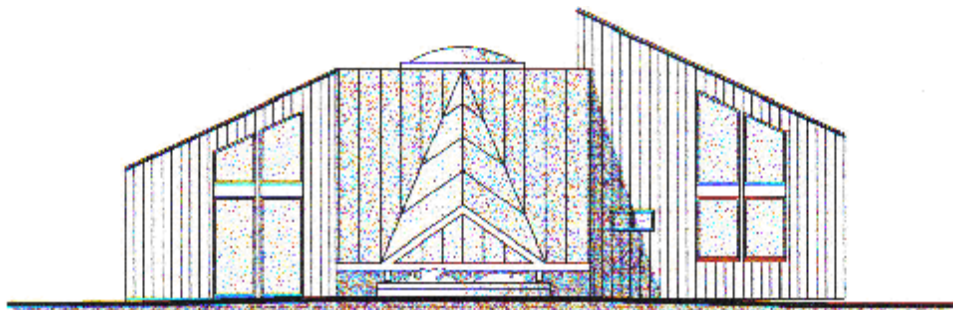
# Eaton Bray Lower School

## TOP MARKS!

The opening paragraph from the OfSTED inspection report, after their October 2007 visit, said this about EBLS:

"Eaton Bray Lower is an outstanding school. It modestly evaluates itself as good with some outstanding areas, but it is better than this. Its self-evaluation is correct in identifying strengths and areas for development. It provides an outstanding quality of education and care for its pupils and excellent value for money. Staff work exceptionally well in partnership with parents and the community for the benefit of all pupils. Pupils' enjoyment of school is impressive. The supportive parents are delighted with all aspects of its provision. Leadership and management are outstanding. The headteacher's vision for a school at the heart of its community is shared by the highly committed staff and excellent governors. This is set to become more firmly realised with the building of a new nursery with facilities for the local community and visiting professional from children's services."

**Please come and visit our friendly village school. Phone 01525 220468 or email [eaton@deal.bedfordshire.gov.uk](mailto:eaton@deal.bedfordshire.gov.uk)**



**COMING SOON:** EBLS Nursery with extended School provision and wrap-around care in a modern, light, environmentally-aware building - due to complete Spring 2008 - please call at the school (01525 220468) to find out more



## Mark Janes Contacts

Felt Roofing - All Roofing Repairs  
and Property Maintenance

**FREE ESTIMATES**



t: 01442 877528

m: 07841 343470

e: mark.janes3@btinternet.com

Established 25 years  
**Approved Contractor  
for Local Authorities**

## Beautopia

Beauty Therapy @  
the Personal Training Centre

Dermalogia Facials

St Tropez Spray Tanning

Waxing

Manicures/pedicures

Gel Nails

Body Treatments

Professional Make Up

Botox Clinic

**01442 870065**

113a High Street

[www.beautopia-uk.com](http://www.beautopia-uk.com)

## Dominic Woolcott Painter & Decorator



- Internal & External
- Plastering & Coving
- Insurance Work
- 20 Years Experience
- Competitive Rates

For a professional job call:  
**01525 229682 or 07747 042879**

**David John Harris**



*(Established 1992)*

All Fencing Work • All Gates  
Paving • Patios  
Driveways • Shingle  
Hedge Setting and Cutting  
Grass Cutting  
Turving Specialist  
Exterior Painting Service  
Sheds  
Small Building Work  
Trees & Shrubs Supplied

**Tel/Fax: 01525 221745**  
**Mobile: 07889 143713**

## Abbott Flooring

- Carpet & Vinyl
- Laminate & wood flooring
- Domestic & commercial
- Supply, fitting & adaptations
- Next day delivery
- All work guaranteed
- Free no obligation quotes
- No job to small

We provide a friendly, professional service at very competitive prices. If you require us to supply & fit or you just need some flooring fitted then give us a call.

Telephone 01525 220249  
Mobile 07958 244536

For all your building needs look no further



# BRIGGS



## BUILDING & CARPENTRY SERVICES

Established 1981

For a professional, friendly service call:

**(01525) 221767**

**(07970) 214439**

### Domestic & Commercial

*Extensions  
Renovations  
Conversions  
Alterations*

*New Builds  
Roof Repairs  
Kitchens  
Bathrooms*

*Patios  
Driveways  
Decking  
Garden Walls*

All work Guaranteed

Free Estimates

## Dagnall Weather Station (AONB)

May was another month of contrast; we began the month with hot dry conditions, temperatures up to 28°C. All the news on the TV was about global warming and early summers but by the 19th it had dropped to -0.3°C, a sharp frost for May. Here in Dagnall some of the crops on the allotment were blacked, by the end of the month we had a few days of rain.

We must not be brainwashed by the media; one hot day doesn't mean we have Mediterranean weather, remember the British weather is fickle, all of the seasons in a day, 'don't shed a clout til May is out'

If anyone has a question, comment or wishes to contact me please email me: [aonb-weather@tiscali.co.uk](mailto:aonb-weather@tiscali.co.uk)

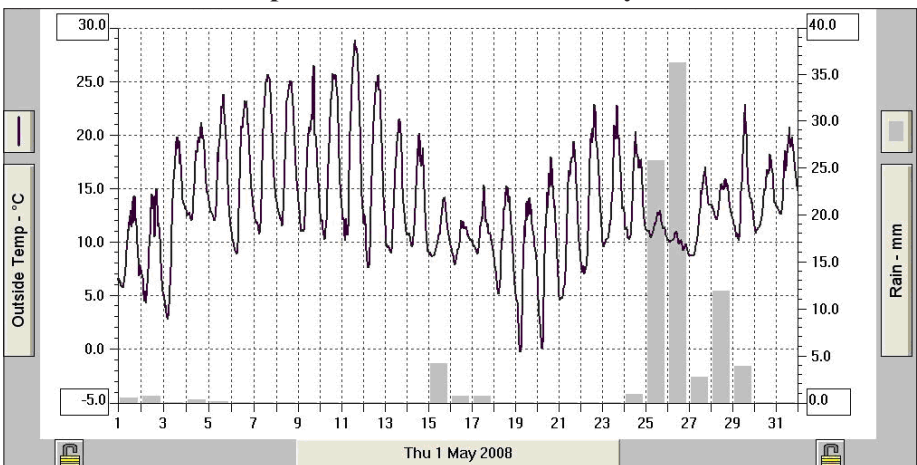
David G Killick, Station Owner

### Weather Conditions for May 2008

**Elevation: 450 ft - Latitude: 51° 50' 13" North - Longitude: 0° 33' 34" West**

	High	Date/Time	Low	Date/Time
<b>Temperature:</b>	28.2°C	11 May 16.00	-0.3°C	19 May 05.30
<b>Mean Temperature</b>	13.6°C			
<b>Dewpoint:</b>	16.4°C	10 May 13.30	-1.7°C	19 May 05.00
<b>Humidity:</b>	97%	28 May 07.00	29%	11 May 15.00
<b>Barometer:</b>	1025.4 hPa	5 May 10.00	997.2 hPa	1 May 00.00
<b>Wind Speed</b>	27 mph	6 May 14.30	Mths Avg.	4.9 mph
<b>Wind Chill:</b>	128.8°C	11 May 14.30	-0.4°C	8 May 06.00
<b>Dominant Wind:</b>	SW			
<b>Rainfall</b>				
<b>Rain Days: 13</b>	Wettest Day	26 May	36.19mm	1.42 ins
<b>Monthly Rain:</b>	Total	May	89.5mm	3.52ins
<b>Yearly Rain:</b>	Total	5 Months	344.1mm	13.55ins

### Temperatures & rain fall for May 2008





## E B Lions A.F.C. End of Season Awards 2008

On Saturday 7th June players and parents of the 10 teams from E B Lions AFC gathered at Edlesborough School for their annual end of season awards presentation. All the players received a trophy in recognition of their contribution and hard work and each team manager nominated players for the special individual awards of “Most Improved Player of the Year” and “Manager’s Player of the Year”. The players in each team voted for their “Player of the Year” from amongst their team-mates. The club would like to thank Edlesborough School for kindly allowing us to make use of their premises and facilities.

### League Results

U7 Whites	7th Division 2 (U8) Chiltern Junior Sevens League
U8 Reds	4th Division 1 Chiltern Junior Sevens League
U8 Blues	4th Division 2 Chiltern Junior Sevens League
U9	2nd Division 2 Chiltern Junior Sevens League
U10	8th Division 4 Chiltern Junior Sevens League
U10 Girls	6th Division 1 Chiltern Junior Sevens League
U11	5th Division 4 Chiltern Youth League
U12	6th Division 2 Chiltern Youth League
U12 Girls	5th Division 2 Chiltern Junior Sevens League
U14	5th Division 5 Chiltern Youth League

### Player Awards

	Players’ Player of the Year	Manager’s Player of the Year	Most Improved Player
U7 Whites	Oliver Rigby	Marcus Connor	Cameron Burchell
U8 Reds	Jack Nevitt	Dax Roe	Freddie Mines
U8 Blues	Ollie Mulcahy	Connor Tough	Daniel Challis
U9	Dylan Karavadra	Jack Cook	Jonny Evans
U10	Dominic Ryan	Aarin Johnson	Charlie Nevitt
U10 Girls	Melissa Saunders	Sarah-Jane Slater	Holly Potton
U11	Scotty Mercer	Jakob Knappitt	Ben Flitton
U12	Will Sanders	Nathan Sears	Hadyn Thomas
U12 Girls	Katy Thiel	Megan Viljoen	Darcy Ashby
U14	James Thiel	Andrew Dear	Jonnie Moriarty

### 5 Year Service Awards

The following players received awards for 5 continuous years of playing for the club:

U11 – Harry Rogers

U12 – Luke Dunstan, Jake Higgs, Nathan Sears, James Pearce, Robert Moseley

U14 – Lee Cavendish, Jack Coates, Matt Lancefield, Sam Marshall, Jonnie Moriarty, Gus Thorne.



## 2007/2008 Season Round-up

Our Under 12's had previously tasted cup success when winning the Under 9's Chiltern Junior Sevens League Cup. This season they reached the semi-final in both League and County U12 Cups, beating several high placed division 1 teams along the way. Not to be outdone, the young players of the Under 8 Reds team also impressed us. They showed a maturity of play well beyond their tender years and also reached the semi-final of their cup competition. Meanwhile the Under 9 team were successful in the league, stringing together a run of twelve consecutive victories to finish runners-up in division two of the Chiltern Junior Sevens league.

We established two new girls' teams at under 10 and under 12 this season. Few if any of the girls had played competitively before but they showed enormous enthusiasm and the results improved beyond our expectations as the season progressed. The under 10 Girls finished in the top half of their league. Given that the girls were all new to this and were playing some established Clubs we think this is a remarkable achievement.

## Other Club News

A major achievement for the club this season was receiving FA Charter Standard Developing status. We are one of only 8 clubs in Bedfordshire to do so. The FA Charter Standard Programme provides recognition that clubs are well run and sustainable, with child protection and safety paramount. It also recognises a club's commitment to coaching, player and coach development, and the raising of standards of behaviour in the game - all of which are big priorities for the Club and the FA.

We have made several new appointments during this year. Lewis Taylor will be Senior Coach to act as a mentor to new coaches. Nick Bramston is our fitness coach and Steve Rogers our goalkeeping coach. Carol Mercer is our New Team Co-ordinator – seeking out players for new teams each season and forging links with local schools.

## Thanks

The club would like to thank Eaton Bray and Edlesborough Parish Councils, Edlesborough School and Dagnall Village Hall Committee for their continued support.

The Club has significant growth plans over the coming 5 years and hopes to double the number of teams in that period, so if you would like to join a growing and friendly Club with aspirations, please contact Tim Sanders on 01525 221516 or email enquiries@eblions.co.uk

For more information about the club please access our website at [www.eblions.co.uk](http://www.eblions.co.uk).

Liz Coates, Press Officer – EB Lions AFC.



[www.eblions.co.uk](http://www.eblions.co.uk)

A Charter Standard  
Development Club

## **We want you !!!**

**To join our successful Youth Charter Standard Football Club, based in the villages in and around Edlesborough and Eaton Bray.**

**Teams from U7 to U15 (boys and girls)**

**Why not try out for a team and the opportunity to play exciting football in our friendly club.**

**We particularly want to hear from boys in this current school year 1, year 2, year 3, year 5, 6 and year 7 and also girls in school year 3 and year 4.**



**Contact us on enquiries@eblions.co.uk or phone Tim Sanders on 01525 221516. All coaches FA qualified and CRB checked.**

## Eaton Bray Methodist Church

### Eileen Roberts 1914 – 2008

Eileen was born in March 1914 at Rye House in Eaton Bray and was a life long member of our Chapel. She was born into a farming family and had 4 brothers and 3 sisters. She attended Cedars School, Leighton Buzzard, and drove there with her brother Laurence in a pony and trap, leaving the pony and trap in Pratt's Agricultural yard and picking it up again after school. Eileen drove horses and ponies around on the farm and was a keen cyclist, regularly visiting her sister Freda on her Leighton Buzzard farm. She also played Tennis very successfully.

Following the death of her father Arthur, Eileen ran the family farm herself, mainly keeping pigs. She also looked after her mother until she died.

Eileen's garden at Rye House was always a picture, especially good were her dahlias and sweet peas and no-one ever left after a visit without flowers, vegetables, eggs or cakes.

She had a great sense of fun and mischief and always enjoyed a laugh and a good joke. Many of our members have attested to the warm welcome they received as newcomers from her.

At Harvest time she loved to help out with the flower-arranging and her creations in butter were incredible, we all remember a memorable Harvest Basket and her shortbread and scones were superb. She was still helping with our Saturday lunches in her 70's, making apple pies and sculpting 100 individual butter portions even though she was in considerable pain with her arthritis.

She was a life-time member of the Ladies Bright Hour Fellowship at our Chapel and as the youngest member had cut the cake at their 1st birthday party.

Eileen left Rye House to live in Moor End when she was in her 70's and then 7 to 8 years ago she moved to the Paddocks Nursing Home. There was no doubting her faith in her Lord and she was always happiest playing the organ in her Chapel. She had played for 50 years following on from her mother and sisters Gladys and Freda.

Eileen died on 2nd May aged 94. She is finally at peace with her Lord. God Bless you Eileen.

\*\*\*\*\*

Our Cream Teas were a great success and approximately £ 900 was raised . A special thankyou to James, Jane and Nikki McFarland for all their hard work hosting the event and our thanks to everyone who helped and also supported us on the day. Monthly Charity Lunches will re-start on Saturday October 11th from 12.00noon until 1.30pm. We look forward to seeing you there.

### Eaton Bray Village Hall 100

#### Club Winners

May 2008

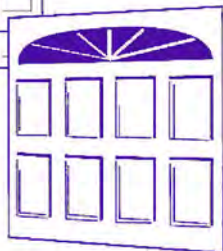
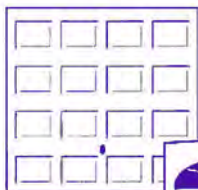
70	Barbara Collier	£100
96	Hawtin French	£25
145	Alan Trantum	£25
86	Dorice Tearle	£25
173	Margaret Roberts	£25

Drawn on 22nd May 2008 at Eaton Bray Playgroup. Please direct any correspondence to Ross Bagni, 71 Bower Lane, Eaton Bray, Bedfordshire, LU6 1RB, Telephone: 01525 221411.



# Premier Garage Doors

**MANUAL & ELECTRIC**



## Quality Garage Doors

- ✓ SUPERB CHOICE OF DESIGNS IN METAL,  
WOOD AND FIBREGLASS
- ✓ ANY SIZE DOOR MADE TO YOUR REQUIREMENTS
- ✓ LARGE SELECTION OF SPARES & FAST REPAIR  
SERVICE AVAILABLE
- ✓ NEW OR EXISTING DOORS CONVERTED TO  
AUTOMATIC
- ✓ PROFESSIONALLY FITTED BY OWN EXPERT  
CRAFTSMEN
- ✓ PROMPT FREE ESTIMATES & ADVICE
- ✓ WE COVER ALL AREAS

- DIY KITS AVAILABLE
- INSURANCE WORK WELCOME
- COUNCIL APPROVED
- REMOTE CONTROL GATES ALSO  
AVAILABLE

**(EST 1984)**

UNIT 7 SPARROW HALL FARM  
LEIGHTON ROAD, EDLESBOROUGH LU6 2ES

**01525 220212 OR 01494 773391**

# Janes

carpets & flooring

**Carpets & Vinyl**  
**Karndeán**  
**Quickstep Laminate**  
**Engineered Wood**  
**Parador Real Wood**



- \* No Obligation Quote
- \* **Takeaway Samples**
- \* Uplift & Disposal Service
- \* **Finance Available**
- \* Ask staff for details

**4-8 High Street, Edlesborough, Dunstable, Beds LU6 2HS**  
**Tel: 01525 220208 Fax: 01525 222802**