

FOCUS

April 2009



THE FOUR VILLAGES MAGAZINE

EATON BRAY

NORTHALL

EDLESBOROUGH

DAGNALL

The White Horse
at Eaton Bray

Reservations Tel: 01525 220231

www.the-whitehorse.co.uk

15th to 18th April



Italian Week

How's your Italiano?

If you can't speak
Italian, wave your arms
around a lot, then
eat Italian and drink
Italian. Simple!
Grazie!

Focus - The Four Village Magazine Magazine Committee

Joint Editors: George Crutcher - 7 Summerleys, Eaton Bray 221637

Email: george.crutcher@tiscali.co.uk

Sally Siddons - 34 Wallace Drive, Eaton Bray 221733

Email: sallysid@hotmail.com

Dagnall Representative: Sue Cawdell - 10 Deans Meadow, Dagnall 01442 842200

Northall Representative: Derrick Bonfield - 'Poppy'n', Eaton Bray Road 220013

Circulation Manager: John Plater - 41 Church Lane, Eaton Bray 221095

Treasurer: Ken Coates - 10 The Nurseries, Eaton Bray 220868

Advertising: Sally Siddons - 34 Wallace Drive, Eaton Bray 221733

Production Manager: Tracey Moren (Moren Associates Limited) 01525 229695

Copy for publication to the Editors or one of the following by the **10th of the month:**

Kevin Cabbage - 'Larums', Eaton Bray Road, Northall

Val Barrow - 3 Chestnut Close, Dagnall

Focus accepts no responsibility as to the accuracy or content of any advertising or articles published in 'this' magazine neither do they reflect the opinion of members of the Committee.

© Articles published in Focus may not be reproduced without permission.

**Focus would like to remind contributors that the deadline for
articles is the 10th of the preceding month**

Police Contact Numbers...making neighbourhoods safer together

Bedfordshire Police (Eaton Bray)

General Assistance (Recommended Number) 01234 841212

Leighton Buzzard Police Station/P.C.Viv Dady 01582 473418

P.C. Viv Dady Mobile 07908520148

Typetalk: 18001 01582 437418

Email: SNT.Leighton-Rural@Bedfordshire.pnn.police.uk

Thames Valley Police (Edlesborough, Dagnall & Northall)

0845 8505505

Village Hall Bookings

To book your local village hall for an event please contact the following:

Northall: Lorna Cabbage, Tel: 220361

Eaton Bray: Norman Lee, Tel: 222831

Dagnall: Elizabeth Coates, Tel: 01442 842550

Edlesborough Memorial Hall: Beverly Sage, Tel: 01525 229509

Thank you

Tessa Williamson would like to say a very sincere thank you for all the cards, flowers and messages of sympathy received after the death of her dear husband, Humphrey. The kindness and sincerity of the Rev. Peter Dudeney who conducted the service at Edlesborough Methodist Chapel, where Humphrey had been a member for many years was particularly appreciated.

Many thanks to everyone for their support.

Village Diaries April 2009



Weekly

- Mon-Fri (term time) Eaton Bray Pre-school, Eaton Bray Lower School, 01525 220468
- Mon-Fri (term time) Dagnall Under 5's, Dagnall Village Hall, 9.30-12 noon, Mrs Ann Tobin 07816 358342
- Mon-Fri (term time) Edlesborough Under 5's Pre-School, Edlesborough Memorial Hall, Sue 01525 222199
- Mon-Thu (term time) Totternhoe Pre-school, mornings, Totternhoe Memorial Hall, Kay 07956 526635
- Mondays Pilates, 10.45am, St.Giles Church Hall, Totternhoe, Lisa: 01582 412426
- Mondays (term time) Mums & Tots Group, 1-2.30pm, Grace Community Church
- Mondays (term time) 2nd Eaton Bray Rainbows, girls 5-7 years, Edlesborough Memorial Hall, 4.45 - 5.45pm, Lyn 01525 222518
- Mondays (term time) 2nd Eaton Bray Brownies, girls 7- 10 years, Edlesborough Memorial Hall, 6 - 7.30pm, Sarah 01525 229194
- Tuesdays Yoga, Northall Village Hall, 1.30-3pm, Doreen 01525 377542
- Tuesdays Line Dancing, 1.30-3p.m., Eaton Bray Village Hall, Lyn Stubbs 220731
- Tuesdays Baby's First Cafe (Support for Breastfeeding mums), 10.15 - 11.45 am, Pitstone Memorial Hall
- Tuesdays Pilates, 10am-12noon, Eaton Bray Village Hall, Nicky Roussou 07861 161680
- Tuesdays Totternhoe Baby & Toddler Group, 9.30-11.30am, Totternhoe Village Hall, 07986 730922
- Tuesdays Northall Toddler Group, 10am - 12 noon, Northall Village Hall, Ellie 01525 222144
- Tuesdays Tap & Ballet Classes, John Latus School of Dance, 4-8pm, Eaton Bray Village Hall, 01582 620576
- Tuesdays Fortnightly Coffee Morning, Bring & Buy, Table Top Sale, 10-12noon, Salvation Army Hall, Booth Place, Eaton Bray
- Weds (term time) Cheeky Monkeys Under 5's Playtime, 1:00pm - 2:45pm, Eaton Bray Village Hall, Contact Louise on 07784 165259
- Wednesdays Chi Kung & Wu Chi classes, Coffee Tavern 11am - noon
- Wednesdays Pilates, 7.15pm, Northall Village Hall, Lisa: 01582 412426
- Wednesdays Egyptian Dance Class, 7-8.30pm at Eaton Bray Village Hall. Contact: Soraya 01525 853360
- Thurs (term time) Baby & Toddlers Group, Dagnall Village Hall, 12:45 - 2:45pm (12:15 if bringing lunch) Contact Michelle Tel 01442 842 676
- Thursdays Yoga, Northall Village Hall, 11.30am-1pm 01525 377542
- Thursdays Keep fit, 2-4pm, Eaton Bray Village Hall, Mrs Johnson 220304
- Thursdays Kfa Body Moves 40+, Fitness through movement, exercise & dance. 8-9pm, Edlesborough School, Pat 01582 668735
- Thursdays Baby & Toddler Group, Salvation Army Hall, Booth Place, Eaton Bray, 9.30-11.30am

Thursdays	Keep Fit Edlesborough School, 8pm Tel: 01582 668735
Thursdays	Jazzercise, 9.30-10.30am, Eaton Bray Village Hall, Angela Veryard, 01525 715208
Thursdays	Karate, 7-9pm, Eaton Bray Village Hall, Brian Bates 07958 348086
Fridays	Tap & Ballet Classes, John Latus School of Dance, 4-8pm, Eaton Bray Village Hall, 01582 620576
Saturdays	Jazzercise, 9.30-10.30am, Eaton Bray Village Hall, Angela Veryard, 01525 715208
Saturdays	Drama Class for Children, 10.35am-12.35pm, Eaton Bray Village Hall, Claire Casey, 07792 508591

Monthly

1st Monday	Eaton Bray Parish Council Meeting, 7.30pm, The Coffee Tavern
1st Monday	Eaton Bray W.I. Meeting, 7.30pm, Eaton Bray Village Hall, Contact Sheila Beal on 01525 221185
1st & 3rd Tuesday	Dunstable & District Orbit Club meet at Dunstable Rugby Club at 8pm. For details contact 01525 222441 or 01582 755147
1st Sunday	Grace Baptist Church Service, 3pm, all welcome, David Coleman 01582 664990
2nd Tuesday	Toddlers' Church, St Mary's, Eaton Bray, 2.00pm
2nd Tuesday	Dunstable & District Local History Society meeting, 7.45pm, Methodist Church Hall, Dunstable (opposite Wilkinson)
2nd Tuesday	Edlesborough W.I. Meeting, 7.30 pm, Edlesborough Memorial Hall
2nd Wednesday	8.15pm Healing Service in St Mary's Church
2nd Thursday	CAMEO Coffee, tea & chat, 10am-12noon, Edlesborough Methodist Church
3rd Thursday	Edlesborough Parish Council Meeting, 7.30pm, Memorial Hall
3rd Sunday	Lunch club 11.30 to 2.00pm, Eaton Bray Village Hall, Chris Hewitt 222288

Other Regular Events

1st, 15th & 29th	Bingo, Dagnall Village Hall 8pm.
3rd	Leukaemia Research Coffee Morning, 2 Dunstable Road, Dagnall, 10.30 am.
21st	Dagnall Over 60's Village Hall 2pm Speaker Mrs Paula Bonarius

One Off/Annual/Irregular Events

9th	Play around the Parishes, 10am-12.30pm, Edlesborough. Full details at www.aylesburyvaledc.gov.uk/play or 01296 585210.
15th	Play around the Parishes, 10am-12.30pm, Dagnall. See above.
18th	Quiz, Eaton Bray Village Hall, 7.30pm, £8 per person, Bookings: Ross 01525 221411
18th	Dunstable Downs Rotary Club Charity Quiz Evening, 7.30pm, Edlesborough Memorial Hall, £9, Bookings: 01525 222711
24th	EDaN Youth Beetle Drive 7-9pm, Dagnall Village Hall. Contact 01442 842550
26th	Carnival Queen & Princess Selection, 11.15am, Eaton Bray Village Hall. Entry forms: Yvonne 01525 220943. Deadline 15 April

To The Future

Last month I told you about two events that were happening in the future as if they had already happened (are you still with me?)

If you read the Dunstable Gazette you would have see some old GI's looking terribly smug at the Hall's official opening. Well, we do admit to a bit of smugness after all the hard work!

We followed that with the Food, Humour and Dance on the 28th of February, a new venture, which was attended by 120 people. May I thank all those who came along that night and all the helpers who helped prepare and do the usual on the night, we raised a considerable amount of money for both the Hall and Tennis Club.

Now the future:

We are holding another one of our fabulous Quizzes, in conjunction with Eaton Bray Tennis Club, on April 18th and hope that we can yet again get somewhere near the 160 people who turned up last October. The cost is still only £8 including supper (no surprises as to what it will be) and we hope you can get a team up or even come along by yourselves. We will try to put you with like minded people.

As to the hall itself: A working party has sat down and tried to put some order to the next phases of the continued improvements to the hall. This plan will be submitted to the trustees at their next meeting and after that we will let you know what is coming up next.

Just a reminder, that two free tickets are available, for the first person to let me know what page the advert for the Quiz is on.

Coming up in June is our 6th Beer Festival, Friday 5th & Saturday 6th, more information next time.

For tickets or any further information, contact Ross on 221411 or ross.bagni@btinternet.com



Eaton Bray Cricket Club

The cricket season starts with a home match versus Edlesborough on Saturday 18 April. The club is again searching for new players. Despite it being a solvent, successful and highly sociable club, it is always looking to increase its membership, especially from those living in the village. The club can accommodate any level of playing ability as it runs three distinct teams. Two elevens play league cricket on Saturdays with the first team reigning champions. On Sundays the club plays friendly-cricket which provides ample opportunities to bat and bowl. So regardless of whether you are young or old, small or big (not too big!), contact Ian Jones 07956 340888, or if you are brave, attend net practice on a Friday night at the Rye Gardens ground.

The club held its Annual General Meeting in February and elected its officers for the coming year; President Lee Bearton, Chairman Martin Quinn, Treasurer Ian Jones, Secretary Michael Jarrett, Grounds Manager Mick Flecknell, Saturday Captains Andy Norris & Darren Kerins, Sunday Captain Josh Peacock

MJ

CSL

Charvet Services Ltd

Plumbing & Heating Engineer

40 years experience/CORGI registered

Full central heating installation, boiler changes, all heating repairs

Landlords Gas safety certificates

*Complete plumbing service - bathroom refurbishments including tiling
and electrical work*

Underground drainage/blocked pipes etc.

Free Quotations • No call out charge • No payment until complete satisfaction

Telephone: 01525 221052 - Mobile: 07721 625887

comput@mation

it support & after-sales services

Services:

After-sales for any PC
IT support
Wired and wireless network installations
Internet & email assistance

Troubleshooting:

Windows troubleshooting
Virus & spyware removal
Fault diagnostics, repairs & upgrades

Sales:

Custom PC's
Computer hardware & peripherals
Software

On-site visits - office hours or evenings by appointment

Computamation Services Ltd

40 Lake Street, Leighton Buzzard, Beds LU7 1RX

**Contact John Wallace on Tel: 01525 378939 or Mob: 07968 536068
email: john@computamation.co.uk web: www.computamation.co.uk**

Carpet & Upholstery Cleaning

Professional & Local

All work guaranteed - not happy, don't pay

**Powerful equipment means drier much
quicker than other methods**

**100% Guaranteed no chemicals left in carpet
when dry therefore will not easily resoil
& perfectly safe for children & pets**

Recommendations account for 90% of my work

Absolutely no hard sell

Telephone Colin for a Free Quote

DEEP-CLEAN

01525 851 811

www.deep-cleaners.co.uk

Email: colin@deep-cleaners.co.uk

EDLESBOROUGH SURGERY 01525 221630

Cow Lane Edlesborough

**Dr M R Jones, Dr J R Bell,
Dr Stephanie Johnston, Dr Helena Verwey**

We offer a full range of health services at the surgery

EDLESBOROUGH PHARMACY 01525 223181

Pharmacist - Claire Clarke

**Friendly, reliable professional service at the pharmacy
All doctors, dentists and hospital prescriptions dispensed
Professional advice always available**

Herbal/Homeopathic products available

In addition-Disability Aids, e.g. wheelchairs, walking frames

Incontinence Aids, Ostomy Products

Special Orders on Request



Quality Flooring
and Installation
at Affordable Prices

- ◆ Laminate
- ◆ Carpets
- ◆ Real Wood
- ◆ Karndean Vinyl

For a FREE, no obligation quote, please contact me, Michael Bishop, on either number and I will be happy to visit you in your home.



Master Fitter

"Excellent service and a beautiful floor expertly installed. I would highly recommend Aspley Flooring" *S.Stilliard, Edlesborough.*

"Your workmanship has created a beautiful floor, I shall have no hesitation in recommending you or using your services again" *A Satisfied Customer, Edlesborough.*

t: **01908 587332** m: **07977 575010**

www.aspleyflooring.co.uk

30 Years Experience Domestic & Commercial Security



- Burglar Alarms
- Redcare Monitored Systems
- Intercoms
- CCTV
- Access Systems
- Locks



CERTIFICATE NO. NAC/G/2113

Quality Installations – Competitive Prices
Insurance Approved Free Surveys

AAA SECURITY

01525 378222

Slicketts Lane, Edlesborough, LU6 2JD





YOUR ONE STOP SHOP FOR:

Hot Tubs/ Spas • Swimming Pools
Pool & Spa Chemicals • Splash Pools

AZURE POOLS & HOT TUBS LTD

Leighton Buzzard Garden Centre, Hockliffe Road, Leighton Buzzard.
Tel: 01525 854000 • www.hottubs4u.co.uk • www.azure-pools.co.uk

P. DYER ELECTRICAL

For all your Electrical & Testing & Inspection needs

- Re-wires
- Testing & Inspection
- Security Systems & Lighting
- LED & Low Energy Lighting
- Decorative Lighting
- PAT Testing
- Fuse Boards
- Fault Finding & Repairs

Fully insured, Part P registered, all work guaranteed. Fast, friendly, reliable, local electrician. For a free, no-obligation estimate, call Paul on:



Tel: 01525 222109
Mobile: 07850 682815



UNICORN WINDOWS

FREEPHONE 0800 092 5212

“WHERE QUALITY & SERVICE ARE NOT A MYTH”

Windows

Doors

Conservatories

Guttering

- Internally glazed for high security
- High security locks on all windows, doors and conservatories
- Full 10 year insurance backed guarantee



UNICORN WINDOWS

Unit 3&4 Youngs Industrial Estate, Stanbridge Rd,
Leighton Buzzard, Bedfordshire LU7 4QB

FREEPHONE 0800 092 5212

www.unicornwindows.co.uk



PROFILES

FENSA



The EDaN Project - Traffic Management Team

Bringing Country Roads back to the Villages

Country roads - quiet winding lanes through rural villages.

Let's reflect back to driving in the 50's and 60's.

Tyres were narrow, and many considered roadworthy if the canvas was not showing.

Brakes were shoes within drums activated by cables, or if lucky, by poor hydraulics.

Steering wheels were large, to assist in the effort of turning the front wheels.

Heaters were useless.

The de-mister was the back of your glove.

Indicators were a hand out of the window.

0-60mph was minutes, not seconds.

If the car wouldn't start with the ignition key there was always the starting handle.

So remember, or imagine, changing direction on a road 50 years ago. First wind down the window! By hand!! Put your arm straight out, turning right; round in circles, turning left; wave it up and down, slowing down. To slow down it was best to change down gears; this was a known constant and more reliable than brakes. The steering wheel was fed through the hands to apply enough pressure to turn the front wheels (not necessarily at exactly the same time) and the tyres would only grip the road under gradual acceleration and braking. Motoring was both a skill and an adventure.

When choosing a car we now have choices :- Power brakes, ABS, Power steering, Traction control, Bucket seats, Heated seats, Seat position memory, Safety belts, Air bags, SIPS (side impact protection systems), Wind screen washers back and front, Head light washers, Intermittent windscreen wipers, Rear wind screen wipers, Reversing lights, Reversing sensors, Electric windows, Heated windows, Central locking, A.C., Radios, CD players, DVD players, Telephones, GPS, and so it goes on.

We now drive around in a bubble of luxury and safety that is fitting for the 21st century. So protected are we, that we decide on the speed which is safe for us to drive at. But are the pedestrians, horse riders or road side residents any safer than they were back in the 50's and 60's?

So where is all this going? Well as villagers in the EdaN project, you identified speed, volume, and type of vehicles using our village roads as a concern.

To get our country roads back, the Traffic Management Team, financed by the Edlesborough Parish Council, will have SPEEDWATCH, a radar speed detection system, at their disposal. This will be deployed around our villages, with emphasis on the A4146, with a view to bringing speeds down and to deter some of the HGV's now ploughing up and down our roads.

It will be in use very soon so do look out for it. Please don't get caught. Please obey the speed limits. If you are obeying the speed limit, so is the vehicle behind you.

David Gravestock (e-mail davidgravestoc@btinternet.com)

Lorna Cubbage (e-mail lornacubbage@larums.com)



**EYLESBOROUGH
TENNIS CLUB**

Website by [Luptonwell](#)

www.etctennis.org

Play tennis Have fun Socialise Feel good Join our club

Join via the website, or call Iona McLean-Hall on 01525 220562 for details

Dial a Ride Bus Service



The EDaN Buses and Transportation Group have been looking at alternative methods of transportation for the people of the three villages, especially for the elderly or less mobile.

This service is available Monday to Friday 8am to 6pm and can be hired for special trips at other times when available.

You need to register with the scheme by telephoning this number: 01296 330088 or Email : enquiries@dialaride.org.uk. The cost is usually £5 payable annually and fares are roughly equivalent to bus fares for a similar journey.(Bus Passes cannot be used unfortunately)

All vehicles are fully accessible and have passenger lifts, shallow steps, grab rails, enhanced safety equipment and safety locking secure tracking for wheelchairs.

Members can go shopping, to work, visit friends, attend day centres, doctor's surgeries, or social events. Any kind of trip you want to make can be arranged.

Another similar service in our area is Buzzer (Leighton Linlade & District Community Transport Assn). Tel. 01525 853566 Email Buzzer.Buses@tesco.net. This service comes under the same arrangements as Dial a Ride.

You do not need to be elderly or a wheelchair user to join.

The Buses and Transportation Group are working hard on your behalf to try to improve the provision of local buses in all three villages. Letters and Emails are urging the Bus Companies to revise their routes and timetables. We will keep you informed.

Shetland pony

**Looking for a sharer,
At least one day a week.**

**In Eaton Bray.
Please phone lucy
01525 222139 or
07977711350**

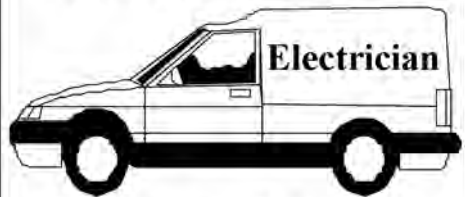




M.J. BROUGHTON
QUALITY DECORATING
Interior and Exterior
 ALL WORK CARRIED OUT TO THE HIGHEST STANDARD
 For a free estimate with no obligation ring
01525 - 222764
 8 SUMMERLEYS, EDLESBOROUGH.

P.J. BRINKLOW

Electrical Contractor



**Most types of electrical
 work undertaken**

Tel; 01525 220469

Mob; 07860 781330

**43, Pebblemoor,
 Edlesborough**

Janes

Carpets and Flooring



We carry a wide range of
 Weaves, Twists & Natural Carpets Vinyl & Quick Step Laminate
 KARNDEAN The warm alternative to WOOD & CERAMIC TILES

AFFORDABLE & COMPETITIVE PRICES
NO DEPOSIT
INVOICE ON COMPLETION
SAMPLE TAKE AWAY SERVICE

We are happy to visit you at your home For a FREE no obligation quote.

High Street Edlesborough Nr Dunstable Beds. LU6 2HS Tel: 01525 220208 www.janesltd.co.uk

CHARTERED ACCOUNTANT



01525 221676

**OPEN 7 DAYS / EVENINGS
FRIENDLY LOCAL SERVICE
VERY COMPETITIVE FEES**

MIKE SUTCLIFFE, MBE

Please visit my website
www.mikesutcliffe.com

213 CASTLE HILL ROAD, TOTTERNHOE, BEDS, LU6 2DA

Stretch your child's imagination in three directions at once.

HERE'S a way to spend weekends that'll have 4-16 year olds buzzing. Enrol them in Leighton Buzzard's Stagecoach Theatre Arts School where for three hours they learn to act, sing and dance.

The skills they learn aren't just for the stage. They grow in confidence, self-reliance and self-esteem. Stagecoach training is for life. You'll see new sides to your youngsters you'll want to applaud.

There's no interview, they take no audition. Enthusiasm is all they need. For a Prospectus, call Wendy Ashman at Stagecoach Leighton Buzzard on 01525 222715.

www.stagecoach.co.uk/leightonbuzzard



STAGECOACH
THEATRE ARTS SCHOOLS

WWW.STAGECOACH.CO.UK



Patricia's Cuisine

Catering For All Occasions

- Buffets, Dinners •
- Christenings, Weddings, Funerals •
- Promotions & Business Lunches •

For Enquiries & Menu

Meadside Farm, 104 High Street,
Eaton Bray, Bedfordshire, LU6 2DP

Telephone: 01525 222174

BARRY CATO

MOTOR REPAIRS

*Servicing, repairs and
MOT's arranged*

Workshop at:

r/o Norfolk House Farm, Harling Road
Eaton Bray, Dunstable, Beds, LU6 1QY

Tel: 01525 221681 (workshop)

07836 650015 (mobile)

SPOTLESS

Domestic & Commercial Cleaning

Weekly * Fortnightly * One-offs

- Fully Insured
- Family Run Business
- Free In Home Quote
- References Available
- Window Cleaning
- **Carpet Cleaning:**

For whole house

2 Bed £60

3 Bed £75

4 Bed £85

Tel: 01296 580203

or Mobile: 07909 934168



BRIAN'S SCHOOL OF MOTORING

grade 5 driving instructor
pass plus registered
excellent pass rate
block booking discounts

Tel: 01582 535689

Mobile: 07958 348086

Email: bbates.1@ntlworld.com

www.briansschoolofmotoring.org.uk



**Blockpaving, Patio Specialists and
Groundwork undertaken**

Telephone 01582 704495

Mobile 07958 717248

Free Quotations

EDP

EDLESBOROUGH DENTAL PRACTICE



- Cosmetic Dentistry
- Tooth Whitening
- Dental Implants
- Wrinkle Correction Therapy

11 cowlane | Edlesborough | Dunstable | Bedfordshire | LU6 2HT

t: 01525223175

w: www.edlesboroughdentist.co.uk



High Street Hair

66 High Street
Eaton Bray
Nr Dunstable Beds

01525~221252

Specialising in advanced colouring, cutting and styling techniques. Professional, friendly and affordable service for the whole family.


a new religion for hair



GATES

Plumbing & Heating Ltd

Specialising in all types of
Plumbing, Gas & Oil Heating

We now offer **Solar Heating** as part of our portfolio, please contact us for a free estimate

Tel: 01296 670445

Email: plumbing@gates100a.fsnet.co.uk

CORGI & OFTEC registered

Wills, Probate & Lasting Powers of Attorney



Tony Duke, Sovereign's highly experienced Regional Director, will ensure your Will matches your specific requirements.



YOUR PRIORITIES? YOUR REQUIREMENTS?

- avoid Inheritance Tax
- minimum future long term care fees
- the best provision for children
- protect home from an enforced sale

You receive a very personal IN-HOME service, benefit from the fullest legal protection, and have your documents prepared by solicitors who specialise in Family Law. Fees are very competitive including **discounts on Family Estate and Care Packages.**

CALL TONY ON:

01525 220644

for a daytime or evening appointment in your home.

Provider of **solicitors'**
IN-HOME Will writing
services locally and
throughout the UK



EST 1995

PINSTRIPES

SPECIALISTS IN SIGNS & GRAPHICS

- CAR BIKE VAN & TAXI GRAPHICS
- LORRIES & HORSEBOX GRAPHICS
- WHEELCOVERS
- VEHICLE MAGNETICS
- ONE WAY VISION SIGNS FOR WINDOWS
- VINYL CUT LETTERING & LOGOS
- A BOARDS & PROJECTING SIGNS
- BUILDERS BOARDS
- SHOP SIGNS
- WINDOW GRAPHICS & FROSTING
- FULL COLOUR DIGITAL PRINTING
- STICKERS POSTERS CANVAS & PHOTOS
- SAFETY SIGNS VARIOUS LABELS & BADGES
- BANNERS BUNTING FLAGS
- ENGRAVED SIGNS & DOOR PLAQUES
- ACRYLIC PERSPEX & METAL 3D LETTERING
- BUSINESS CARDS LETTERHEADS FLYERS
- T SHIRT PRINTING

01525 220485

07973 167779

THEPINSTER@HOTMAIL.COM

WWW.PINSTRIPES-SIGNS.CO.UK



01525 377185

www.crockadoodledoo.co.uk

Crockadoodledoo
Original ceramics... painted by YOU!

NEW STUDIO NOW OPEN AT
LEIGHTON BUZZARD GARDEN CENTRE

info@crockadoodledoo.co.uk

Curtains 4 u

Jan Robinson

Phone/Fax: 01442 843454

Mobile: 0777 9029140



Curtains with a
certain Flair

Very competitive rates for
all your soft furnishing needs.
Hand finished curtains a speciality
Alterations and own fabric work undertaken

in good spirits mobile bars

tel/fax: 01525 220443

mob: 07702 712856

ellie@ingoodspirits.co.uk

www.ingoodspirits.co.uk

HALL FOR HIRE

• Bar & Kitchen

• Discount for Villagers

• Membership Available

EATON BRAY

SPORTS & SOCIAL CLUB

For Details phone:

07709 725803



Your Village Estate Agents

Independently owned and established for over 35 years, fully staffed by experienced mature and professional people giving an expert and friendly service.

Call Tony Denson, Hilary Tootell, Hilary B or Julia now

MOVE WITH THE NAME YOU CAN TRUST

65 Moor End

Eaton Bray

LU6 2HN

Opposite the Edlesborough Post Office

Tel: 01525 221313

www.densons.co.uk



The three **aa**ghs Reading, writing and arithmetic.

Even the most angelic children need a solid foundation in maths and English.

Kumon programmes:

- work at a pace tailored to your child's needs
- give their confidence a real boost
- develop invaluable study habits and concentration

Contact your local Instructor today.

DUNSTABLE study centre
Christina Wade • 01525 222 505
dunstable@kumoncentre.co.uk

kumon.co.uk

KUMON
50TH ANNIVERSARY

All Plumbing Repairs and Installations

Domestic & Commercial

- Dripping taps
- Sinks
- Overflows
- Boiler Changes
- Cylinders & Tanks
- Immersion heaters
- Showers & Bathrooms etc
- Leaks, Bursts & Blockages
- Insurance work undertaken

Emergency
Service



City and Guilds
CGG Qualified Engineer

No call-out charge, free estimates

D. NICHOLSON PLUMBER

01525 872335

Mobile: 07976 975604

Glebe Farm Cottage, Dunstable Rd, Toddington

Eaton Bray with Edlesborough Parish News

Churchwardens: Chris Banks (221556) and Peter Bennett (221284).

Hon. Assistant Priest: The Revd John Heffer, 35 Pebblemoor, Edlesborough - Tel: 220618
We tend to take our leisure time for granted these days, but back in the early nineteenth century, before the introduction of bank holidays, Christmas Day and Good Friday would have been the only two days of leisure granted to most working people. Christmas Day and Good Friday - the days when we celebrate the birth and the death of Jesus. Many families have their own traditions of what they do on these two Holy Days; and Good Friday is a day when there are plenty of traditions to choose from.

The traditional food for the day, despite the fact that supermarkets stock them all the year round, is the hot-cross bun; a rare treat when dripping with melted butter. Perhaps your family won't eat meat on Good Friday or, more specifically, you will eat fish. If you are a gardener, Good Friday will be the day when, given reasonable weather, you will be sowing your potatoes.

The name Good Friday probably evolved from an earlier designation – God's Friday – in the same way that 'goodbye' evolved from 'God be with you'. For Christians the emphasis of Good Friday will be on both Jesus and God. In the morning, many hundreds of Christians from the Dunstable and Leighton Buzzard areas, and many thousands of Christians nationwide, will take part in marches of witness. Then, in the afternoon, services will be held which reflect on Christ's suffering, either a three hour service from noon until 3pm or a one hour service from 2 to 3pm, commemorating Christ's final hours on the cross culminating in his death.

The church has always understood that the day commemorated on Good Friday was anything but happy. On that day, Jesus underwent one of the most dreadful tortures ever devised by mankind so, since the early centuries of the church, the day has been marked by sadness, mourning, fasting, and prayer. But the Christian conviction is that the day was also the one in which God's love was truly revealed. Out of Jesus' dreadful anguish God raised Him from the dead to new and abundant life. And for his followers the pain of Good Friday, the not knowing of Holy Saturday, gave way to the joy of Easter. So in some parts of Europe, the day is not just called "Good," but "Great" or "Holy" Friday.

So it can be for each of us whenever we experience darkness, pain or suffering, whether it be on Good Friday or on any other day. My prayer is that, on Good Friday you will take the time to reflect on the suffering of Jesus and on the love of God. Each of us needs to know the presence of a Saviour who shares our suffering and experience the Easter message, the great affirmation that pain and death do not have to have the final word and that God's redeeming love can still bring us hope and joy and pleasure even in the darkest and most difficult times.

And if we can catch a glimpse of such resurrection experiences in our own lives then we can proclaim with confidence the Easter message "The Lord is risen – He is risen indeed. Alleluia." A happy and glorious Easter to you all.

Gordon – Lay Reader

From the Parish Registers

Funerals – "Grant them, O Lord, eternal rest"

February 27 Gwendoline Overhill of Wallace Drive, Eaton Bray

March 6 Amelia Eliza ('Daisy') Pateman of The Paddocks, Wellhead

Dear Friends at St Mary's and All Saints',

I want to thank you most sincerely for the generous gifts you presented to Katrina and myself on Sunday, 8 March. It was a most enjoyable day, and the events will remain in our memories for a very long time.

I am delighted with the multimedia projector – until now I could not project any of my digital photographs other than on the computer screen, as became evident in responding to more recent invitations to give an illustrated talk to various groups. Now it's no holds barred! And we shall have plenty of scope buying things for the new house with the John Lewis vouchers. Thank you all so much for being so generous. And the flowers were absolutely gorgeous.

By the time you read this we shall be settled in our new home and adjusting to a new way of life. At times it seemed as if it would never be ready for us, as the work schedules fell further and further behind, but these things come right in the end!

So many of you, both members of the churches and residents in the community have sent cards and kind wishes, and we thank you for all of them.

Now you must prepare for the next chapter in the life of the Parish of Eaton Bray with Edlesborough, and I assure you of my good wishes and prayers as you begin the search for a new priest to minister among you. May God bless you all.

MALCOLM

Services at St Mary's Church

SUNDAYS : **8.00am** – The Eucharist
 10.00am – PARISH SUNG EUCHARIST (with Sunday School)

On Third Sunday of each month:

10.00am – WORSHIP FOR EVERYONE a shorter, less formal service (Those who wish to attend a Communion Service on that Sunday are reminded that there is a Family Communion at 10.30am at All Saints', Dagnall, where they are assured of a warm welcome.)

WEEK-DAYS :

Tuesday: **2.00pm** (2nd Tuesday) – Toddlers' Church

Wednesday: **9.30am** – Eucharist

EVERYONE WELCOME AT THESE SERVICES

BAPTISMS, WEDDINGS AND FUNERALS

Enquiries for these should be made in the first instance to:-

BAPTISMS – Mrs Eileen Bennett (221284)

WEDDINGS & PROCLAMATION OF BANNIS – Mrs Jenny Hewett (220295)

FUNERALS – Mr Peter Bennett (221284)

or leave a message at the Parish Office (222254)

Dunstable

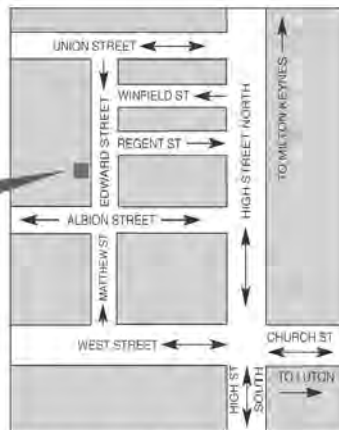
LAMINATES

email or fax your requirements
for a free quote or why not
take advantage of our free
home measuring service

cutting and edging service
available

why not visit our show room -
you'll be amazed at the choice

we are here



47 Edward Street, Dunstable,
Bedfordshire LU6 1HE
Tel: 01582 668973 Fax: 01582 608227
Email: sales@dunstablelaminates.co.uk
Web: www.dunstablelaminates.co.uk

THE **WORKTOP** specialist



James B Chadburn MBHI

Fine Antique clocks & Barometers

Specialist in repairs &
restorations.

Valuations & clock
finding service.

Advice & assistance on
formation & disposal of
private clock collections.

Quality clocks/barometers
Bought & sold.



Telephone 01525 221165

Mobile 07790 000629

E-mail: jbchadburn@lineone.net



**Café
masala**
Exquisite Indian Cuisine

We Cater for Office or Private Parties and don't
forget to try our Sunday Buffet

10% Discount on all Takeaway Orders Over £12

Fully Licensed & Air Conditioned

Open Seven Days a Week

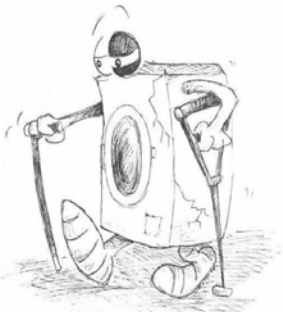
Hours: 12 Noon to 2.30pm & 6.00pm to 11.30pm

Tel: 01525 22 22 64

63 Bower Lane · Eaton Bray · Dunstable · Beds · LU6 1RB
email: taraque@hotmail.co.uk · www.cafemasala.com

WASHING MACHINE REPAIRS

ALSO
DISHWASHERS, TUMBLE DRIERS,
AND ELECTRIC COOKERS



Call
ANDERSON D.R.S.

01582 665764

www.andersondrs.co.uk
SALES AND RENTALS AVAILABLE

Buy Direct From Our
Own Farm

Master Card

VISA

From **Ivinghoe Turf**

- Commercial & Domestic
- Small Orders Welcome
- Bark, Grass Seed & Fertiliser
- Laying Service
- Discount on Larger Orders
- Screened & Blended Topsoil
- All Year Availability
- Forklift Delivery Available



ROLAWN[®]
Approved Rolawn
Stockist

Family firm farming since 1949

ALL AREAS

Freephone :

0800 043 5061

www.ivinghoeturf.com

The Bungalow, Vicarage Farm, Ivinghoe, Leighton Buzzard

AARON FENCING

ALL TYPES OF DOMESTIC & COMMERCIAL
FENCING & DECKING WORK UNDERTAKEN

- FREE ESTIMATES
- FULLY QUALIFIED & INSURED
- PERSONAL SERVICE AT COMPETITIVE PRICES

TEL: 01582 665779

MOBILE: 07798 927272

7 STATION ROAD, DUNSTABLE, LU5 4HS

ARC Contract Services Ltd

- Wallpapering and painting
- Laminate Flooring • Coving
- Tiling • Bathroom installations

Quality work at affordable prices
Insurance work undertaken
All work guaranteed for 5 years
Public liability insurance cover



FOR FREE PROFESSIONAL QUOTATION
CONTACT ADRIAN ON: **01582 539179** or
07789 730580

Garden Care

of Slapton

Traditional Garden Maintenance
and Landscape Services

Free Estimates & Advice

Telephone Eaton Bray 221454

Mobile 078302 86837

cardio strength stretch



MON 7.45pm Brewers Hill Sch
WED 7.45pm Queensbury Sch
THU & SAT 9.30am St Mary's
Eaton Bray Village Hall
THU 7.30pm Legrave Primary
Tel: Angela 01525 715208

jazzercise [®] *FREE CLASS
WITH THIS AD*

Gas Boiler Servicing

Over 30 years experience

Have your boiler serviced by a
CORGI registered engineer from £60

Other services available:

Maintenance, repair and installation of all domestic
gas appliances, including L.P.G.

Boiler installations, landlord safety certificates,
power flushing, pre-purchase surveys and plumbing.

Free Quotes, no call out fee, and free
friendly advice on all of the above

**Edwards Gas &
Heating Services
Eaton Bray**

Tel 01525 220626

Email:

stevethegas@orange.net

*TMS Chauffeur
Services*

Luton	£20.00
Heathrow T1,2,3	£50.00
Heathrow T4,5	£55.00
Gatwick	£75.00
Stansted	£65.00

**London, Theatres, Stations,
Ports. Distance no object.**

**For a professional reliable
service call:**

01582 667710

Will Kimberley Garden Services

01442 255784

**Phone for a free no obligation
written estimate.**

Fiona@wkgardenservices.co.uk

- High hedges a speciality
- Overgrown gardens cleared
- Fences erected and repaired
- Tree Lopping
- Fruit tree pruning
- Shrub trimming
- General garden tidy up's
- In fact any job in the garden!

Stephen Brewer FCCA

offers a friendly and personalised
comprehensive service covering:

Accountancy - Taxation

- Self Assessment -

for

- Individuals -

- Partnerships -

- Limited Companies -

Advice from a qualified professional
at an affordable fee

**For a free initial consultation at
your home or workplace, phone:**

01234 290333 or 07810 526286

Bayler Wood Associates Ltd
Chartered Certified Accountants

DELLS

UPVC WINDOWS
CONSERVATORIES
FACIAS and SOFITS

**RING ANDY - 01442 826359
MOBILE - 0795 738 6239**

FREE ADVICE • QUOTATIONS

TV VIDEO AUDIO REPAIRS

**BOB SMITH
EATON BRAY 221722
ALL WORK GUARANTEED
FREE ESTIMATES**

A warm welcome awaits you at The Village Swan



- * Enjoy Real Ale and Fine Wines *
- * Excellent Homemade Dishes *
- * Traditional English Lunch & Evening Menu *
- * Fish & Chip Night - Thursdays - eat in or take away
- Curry Night - Fridays - eat in or take away
- Pizzas available till 10.30pm Tuesday to Saturday *
- * SUNDAY ROAST 12:00 until early evening *

BOOK TO AVOID DISAPPOINTMENT

Quiz Night 1st Monday of each month
Safe Beer Garden * Theme Nights

The Village Swan, Ivinghoe Aston, LU7 9DP

For more details of current events:

Tel: 01525 220544 or

Email: TheVillage.Swan@virgin.net or pop in and see us



Naturally

Relaxed

Photography

Ian is rapidly becoming one of the countries most sought after photographers. He is recommended by some of the local top hotels including The Grove and Hanbury Manor. Ian specialises in wedding and portrait photography with years of experience in capturing people's special moments. He is a qualified member of the Master Photographers Association and the Society of Wedding and Portrait Photographers.

Ian Waldron
naturally relaxed photography

www.ianwaldronphotography.com
0845 225 1771

Your Village Photographer
Based at Sparrow Hall Farm - Edlesborough

Dagnall News

Over 60's

During March we had our first trip out of the year. We visited once again the restaurant at the Bell in Winslow. The carvery lunch is a favourite meal for our members.

On March 28th we also had another visit by Jean Martyn who entertained a packed audience in the Village Hall. Her expertise as an organist is to be admired and her ability to truly "entertain" is very much appreciated.

Our April meeting is on the 21st when we welcome Mrs Paula Bonarius for a talk on the A. K. Wildlife Hospital.

Dagnall School

Dagnall School Centenary 1909 – 2009

Dagnall School is 100 years old this year and we shall be celebrating this event on Saturday 11th July 2009.

We would like to invite all past pupils and staff to join us on this day and anyone else who would like to come along and celebrate this wonderful event with us.

If you would like to join us, please call Kathy in the school office on 01442 842473. Thank you to those people who have already called in.



Dagnall Under Fives

The children had great fun making Mardi-Gras masks and shakers for their very own playgroup mini-carnival which included limbo dancing!

In March our topic was Under The Sea and the children enjoyed lots of related activities and learning about colours with the help of Rainbow Fish. We celebrated World Book Day and the children all brought in their favourite book to share and discuss. Red Nose Day was spent in our pyjamas but no-one was feeling sleepy especially with all those yummy treats on our cake stall!





Have you ever wondered why an Electrical and Flooring Shop is situated in the middle of Eaton Bray and Edlesborough?

JANES is a family business which for over 115 years has been serving the needs of the local people of Edlesborough, Eaton Bray, and the surrounding villages and towns further a field...

After more than two centuries of farming and farrier background Ezra Janes broke away from the family tradition and commenced making shoes for people instead of horses.

After three years of operating his business from his cottage he decided to build and design his own house and shop on the High Street in Edlesborough, and in

1891 the original eight room building was erected. This building now forms the main part of Janes.

The Cobblers shop started off in the far right room with the flat roof, this now displays our LCD TV's.

Ezra travelled by his horse and cart to Dagnall, Ringshall, Pitstone and Little Gaddesden collecting shoe orders and repairs. We still travel to these villages and many other areas delivering products to our customers. You may even see Andrew (Ezra's Great, Great Grandchild) doing the same thing, but at break neck speed...!



Ezra Janes

Erza's son Charles continued the business and started to add new products such as Cycles and the money making game of Wireless Accumulators. Then his sons Philip and Donald added more Electrical products as they became more popular in modern times, then to Martin and Peter Janes adding flooring to the collection.

Although our trading lines have evolved in every way over the years, and having closed the shoe shop in 1995 we now concentrate on White Goods, Bikes, TV's as well as our biggest growth area being the Carpet and Flooring. Now in our 5th Generation with Andrew and Louise (son and daughter of Martin) we hope that we have not lost the attention to detail and old fashioned standard of service that we feel our customers deserve. If you have never tried the Janes



1931

experience whether for Batteries or a new TV or Carpet then we challenge you to try today.

If you are already one of our valued customers then thank you for your support and we hope to see you again very soon.

4-6 High Street, Edlesborough, Dunstable Beds LU6 2 HS
tel:01525 220208 fax 01525 222802 www.janeltd.co.uk

Top Tips For Buyers Returning To The Housing Market

A Home Sale Network survey reports signs of an increase in buyers returning to the housing market at the end of 2008, and suggests some Top Tips to Home Buyers for 2009.

If you are looking to move home this year, The Wilkinson Partnership members of national, independent estate agency network Home Sale Network in Leighton Buzzard offers hope of increased buyer activity for 2009 and some top tips to help make the most of today's market.

In a survey conducted in the first week of January 2009, 49% of respondents to a Home Sale Network member questionnaire indicated that they had seen an increase in the number of buyer enquires in November and December 2008. Of the Home Sale Network respondents who had experienced increased buyer enquiries, 28% said enquiries had picked up by between

1-5% and 56% indicated pick up had been between 6-10%. Furthermore, 63% of respondents who reported more buyer enquiries also indicated that these enquiries had resulted in an increased number of offers for property.

Asked for their top tips for buyers in 2009, Home Sale Network respondents said:

Top Tips for 2009's Home Buyers

1. A housing downturn may be the best time to trade-up as any price reduction on your old home is likely to be less than the reduction on the home you are planning to buy.
2. A house is a home and should be regarded primarily as a place to live.
3. Knowing the area you are buying in is key to purchase success. (If you are moving outside your locality, ask your local Home Sale Network member to recommend a fellow Network member in the new area that can offer you purchase help and advice.)
4. Consider the increased savings from any price reduction you receive by purchasing now when compared to the possibility of a smaller price saving if the market allows.
5. A house purchase should be viewed not as a short term commitment but one offering value in the longer term.

Simon Wilkinson from The Wilkinson Partnership said, "We believe that 2009 could be a year in which canny buyers may really benefit from the market. As Home Sale Network's Top Tips for 2009 Buyers notes, those looking to trade-up as well as first time buyers and those in rented accommodation may reap rewards in the current market. It is also reassuring to see an encouraging number of Home Sale Network survey respondents reporting an increase in buyer enquiries towards the end of 2008. We are cautiously optimistic that this will continue in 2009."

**WOULD YOU LIKE TO TRY BOWLING?
COME ALONG AND HAVE A GO
OPEN AFTERNOON
AT
CHEDDINGTON BOWLS CLUB**

SUNDAY 17 MAY - 2.00 PM to 5.00 PM

RECREATION GROUND, HIGH STREET, CHEDDINGTON



FREE TUITION

**WE WILL PROVIDE ALL EQUIPMENT INCLUDING BOWLS
SO JUST BRING A PAIR OF FLAT SHOES - TRAINERS WILL BE FINE**

ALSO - A SAUSAGE OR TWO OFF THE BBQ!!



Some comments from our recent Ofsted report (Jan 09):

Children are consistently offered a stimulating range of activities and opportunities which enable them to make good progress towards the Early Learning Goals.

Staff have a good understanding of creating a safe and welcoming environment . . .

Staff support children well and encourage them to be active in their learning and to think critically.

We are a committee run playgroup operating five mornings a week 9:30 – 12:00 for children aged 2½ to school age.

If you would like to find out if your child would be happy here, please phone our Playgroup Leader, Ann Tobin on 07816 358 342.



Edlesborough School

The children in Year 2 at Edlesborough School were asked to write an adventure story and here are two examples:

Jack and the dragon by Louise Jearrad

One day Jack went in the wood, he went deep in the wood, he climbed up a tree. He saw some smoke by his house so he jumped from branch to branch in the direction of his house. Suddenly he saw a dragon! Jack changed direction and got down from the tree. The dragon saw him and chased after Jack ... BUMP! He ran straight into a larger, more frightening looking dragon. Jack felt scared. He picked up a stick to protect himself. "Hello" said the big dragon. "I am looking for my baby dragon. Her name is Firey. Have you seen her?". "Oh yes I have" exclaimed Jack. Who was rather confused that the dragon was speaking! "Firey was by my house, deep in the wood. Then she was chasing me when I bumped into you so she shouldn't be too far behind."

As they listened they could hear: hop hop puff, hop hop puff, hop hop puff. It was getting louder as it got closer to them. "Oh Firey, I'm over here. I thought I had lost you!" shouted the mummy dragon. Firey hopped and puffed all the way over to her. "Thank you for leading me back to my mummy." Jack was so happy he ran all the way home for his tea.

Pigs in space by Oliver Ryan

Once there were 3 pigs who decided they wanted to go to space. They made their rocket out of cardboard and sellotape. They painted it red and painted the windows white with black spots. The pigs names were Dolly, Alife, Cindy. Up and up they went into space as far as they could go. When they reached the planet, they were very excited because there was a big swimming pool and it was really warm. All 3 pigs jumped into it. There were lots of beautiful coloured fish swimming about with them. They were gold, silver, purple and green. Suddenly they saw a small ship. They were very scared. Cindy said "Shall we go and hide?". "No" said Alife, "Let's go and see who the ship belongs to". So off they swam to see the ship. The ship belonged to 5 other pigs, so they all made friends and had a party. Then they saw something glimmering in the water, they went nearer and nearer and it was a net with one of their friends caught in it, so they all helped to get him out. All of a sudden a pelican came and scooped the three pigs up in his beak and took them back to their spaceship. It was time to go home because their tea was ready. They said goodbye to their friends but never forgot them.

NORTHALL & DISTRICT
AGE CONCERN
WEDNESDAY LUNCH CLUB
WANTED
Leader and Deputy Leader
(due to retirement of present Leaders)
for this well established, thriving club
Both are paid positions.
Leaders, who are well supported
by Trustees, transport and cooking
teams, will need to provide a friendly,
stimulating and safe
environment for the members
Do **YOU** have the qualities and talents
required?
Interested?
then contact The Chairman
Tel 01525 221154
Email idorsetian@yahoo.co.uk

*Love Through a Lens
Wedding Photography*



Simon & Stuart

Home: 01525 229 397

Mob: 07778 236 458

www.lovetroughalens.co.uk

COFFEE TAVERN

High Street, Eaton Bray

Hall for hire suitable for approximately 50 people with kitchen facilities available. Also two smaller rooms ideal for committee meetings

FOR BOOKINGS:

PHONE SYLVIA HIGNELL

ON 01525 220891

Thinking about a new lawn, patio or complete garden makeover?

For a free, no obligation quote phone:



**David Gooch
LANDSCAPING**

& Gardening Services

**Tel: 01296 660628
Mob: 07976 227785**

Garden Design

Lawns • Patios • Driveways



For all your plumbing & gas requirements

01582 481525

General Plumbing • Servicing • Breakdowns & repairs to Gas Boilers inc. L.P.G. • Gas Fires • Warm Air Heaters • Cookers • Unvented Hot Water Heaters • Central Heating Powerflushing • New Radiators • Cylinders and Water Tanks

CORGI Registered & Fully Insured

www.plumbingandgas.org.uk



BEFORE



& AFTER



MISTY DOUBLE GLAZING ?

KEEP YOUR WINDOW FRAMES....

....WE JUST REPLACE THE GLASS!

- UPVC • Aluminium • Or Wood

Because we replace just the glass the repair is a

FRACTION OF THE COST

of a complete replacement window.

QUALITY GLAZING SERVICES

01525 876808

**UPVC
frame
cleaning
service
available**

We also replace Broken...

- Glass • Handles • Hinges
& Locks

and Repair... Patio Doors & Conservatories!



REVIVE

HOLISTIC THERAPY

Holistic therapies are concerned with treatment through massage, manipulation and relaxation. They are not only treatments for one physical ailment or one part of the body, but also treat the person as a whole.

Ideal for today's stressful lifestyles.

Treatments include:

Aromatherapy Massage

Indian Head Massage

Reflexology

Reiki

Crystal Therapy

I also run Reiki courses so you could learn how to become a Reiki Master so that you can help yourself as well as others.

Also available ... Manicure / Pedicure

Vouchers are available for any treatment, so why not treat a loved one or friend as well as yourself.

Edlesborough based. For more information or to book an appointment call

Kate Meredith IHHT, RGN, on 01 525 221380

Established over 10 Years

Duncan Tomblin TREE SURGEON

Forestry Contractor • Tree Felling
 Crown Reduction & Thinnings
 Deadwooding • Hedge Cutting
 Stump Grinding • Site Clearance
 Private Agriculture Fencing Contractor
 Chipper & Stump Grinding Hire
 Digger Hire

**FULL PUBLIC LIABILITY INSURANCE
FREE ESTIMATES**

'The Best Choice For Your Tree'

TEL: (01525) 221946

MOBILE: (07802) 410728

12 Greenways, Eaton Bray, Beds

Highlights of the Minutes of the Eaton Bray Parish Council Meeting Held in The Coffee Tavern on Monday 2nd March 2009 at 7:30pm

Proposed Skateboarding Area

A number of residents addressed the Parish Council with their concerns for the proposed Skateboarding area at School Lane Recreation Ground. The Parish Council informed those present that as part of their investigations they had been in contact with a number of Parish/Town Council's within the Herts, Beds and Bucks area to gauge their opinion on the skatepark installed in their area. The feedback from these councils was very positive all stating that the skatepark had improved their area, there was no increase in anti-social behaviour and were all well used and enjoyed by all. Another resident, who agrees with the project, expressed their concern with a circular received through the door from an unknown sender listing a number of reasons why a skatepark should not be built. The resident was concerned that this gave the wrong impression of the proposal and that it was not entirely accurate. They also believed the circular to be unjust in that it asked those who were happy with the skatepark not to write to the Parish Council whilst those who opposed to the proposed build do so. Both parties, whether for or against this proposal, have the right to write to the council with their opinion.

If parishioners would like to see a working skateboarding area, then they could visit Stevenage where a similar structure has been built, although it is much larger than the one proposed in the village.

Police Representative

PC Viv Dady addressed the meeting and informed the Parish Council that she is getting another PCSO to support her, meaning that PCSO Joanne Glenn will solely be responsible for Eaton Bray and Totternhoe. It was again reiterated the importance for all members of the public to report anything they see (crime/suspicious) by contacting the local police; all contact numbers are listed in the FOCUS magazine and Parish Website. A concern that many people have, and therefore are reticent in contacting the police, is that if they witness a crime or see something suspicious, by reporting it their name will be given out. PC Dady confirmed that all callers' names are confidential.

Homewatch Areas In Eaton Bray

After an approach by Neighbourhood Watch Co-ordinators in the area, the Parish Council agreed with their observations that there is a need for more Homewatch areas within the Parish. Homewatch is also fully supported by the local police. If you are interested in becoming a Homewatch Co-ordinator, then please contact the Parish Clerk for more details.

Mill End Close/Conservation Area Report

A great deal of work has been going on in Mill End Close in the Conservation Area. Members of the Parish Council and a group of volunteers have worked extremely hard in improving the area and the results are excellent. There is more work to be done but the Parish Council wanted to thank all the members of the Working Group/volunteers for all their hard work, time and commitment they have been putting into this project.

Parish Council Website

The Parish Council Website is an excellent way to find out what is happening in your parish. There is a Neighbourhood Policing section which includes information supplied by the local police. You can find out more details regarding the Skateboarding project. A full copy of the minutes of Parish Council Meetings can be obtained from the site. The Agenda for the monthly Parish Council Meeting is available from the website 1 week prior to the meeting. There is a Forum page where you can chat and have your opinion on items that concern/please you. And so much more...

Please visit the site; it's a way to find out what is happening in your area!

Future Eaton Bray Parish Council Meeting Dates

Eaton Bray Parish Council Meeting: Mon 6th April 2009, 7:30pm at The Coffee Tavern

Annual Parish Meeting, Tues 5th May 2009, 7:30pm at The Coffee Tavern

Annual Meeting of the Parish Council: Wed 6th May 2009, 7:30pm at The Coffee Tavern

Contact Details for Eaton Bray Parish Clerk:

Parish Office: 20 Good Intent, Edlesborough, LU6 2RD [Tel: 01525 222601/Email: clerk@ebpc.co.uk]

Parish Council Website: www.ebpc.co.uk

**Eaton Bray
Parish Council Meetings
1st Monday of every month
7.30pm The Coffee Tavern
Next Meeting: Mon 6th Apr 09**



CALLING ALL LOCAL MUSICIANS!



We are looking for local jazz, pop, folk, and rock singers to perform in a special 'festival' music tent at this year's carnival. This should be a really entertaining day and hopefully will raise lots of money for Carnival funds. If you would like to take part in a great music event on Saturday 4 July 2009, please telephone 01525 220535 for more information about auditions.



Is Your Will Up To Date?

The importance of having a Will cannot be overstated. Your Will must be valid, record your current wishes and be accessible to the executors if it is to do the job you expect of it.

Here Is A Check List For You

1. Are the executors and trustees (and substitutes) still those you want?
 2. Are the Guardians (and substitutes) still those you want?
 3. Does the distribution of your estate and any specific gifts reflect your current wishes?
 4. Are there beneficiaries, people or charities, that need to be added or deleted?
 5. Is the possibility of all primary beneficiaries dying in a single incident catered for?
 6. If any of your assets were to be held in trust, e.g for minors, is the guidance for the executors on the management of those assets up to date?***
 7. If you were to leave a child without a parent does the guidance for the Guardian(s) reflect your current wishes?***
 8. Is the record of your wishes in respect of your funeral arrangements up to date? **
- ** These could be within the text of the Will or recorded in papers that accompany it.

If you are a couple and own your home

9. Does the Will include a trust that will ensure the beneficiaries receive optimum benefits by protecting the estate from the outcome of
 - an enforced sale of the home to meet future long term care costs.
 - the surviving partner entering a new relationship, incurring debts etc.

If you are married or are civil partners and own your home

10. Do trusts in your Will have the potential to avoid all inheritance tax no matter how large an estate you leave?

NB A Discretionary Will Trust is not enough if your combined estates exceed £624,000.

A Will is one of the most important documents you will ever sign and to make sure it is correctly prepared you should always choose solicitors who specialise in Family Law.

Sovereign's IN HOME Will writing services provide such a service in the comfort of your home at a time that suits you for very competitive fees.

TONY DUKE



Edlesborough W.I.

We were very fortunate, weather wise, on our last two events, as there was no snow on either occasion.

Tony Maisey, a retired G.P., paid a third visit to our monthly meeting to give his talk on "Concept of Pain". According to reports from members (I was not present on that evening), our speaker was as amusing and informative as on previous occasions.

A week later we held a coffee morning, and raised just under £170 towards W.I. funds. It was a really enjoyable morning, with a very good attendance. We were grateful the weather had improved so much after the period of snow, and thank Maureen Shipway for holding the event at her home.

Val Harris



Edlesborough Under 5's

Monday - Friday 9.25 am - 12.00 noon
Tuesday & Thursday 12.45 pm - 3.15 pm

"The quality of teaching and learning is good. Children are actively involved in their learning, play independently and are assisted by staff to develop their confidence." "Group times at all sessions were very positive experiences for all the children and enjoyed by all present." "Children of all ages have the opportunity to develop their skills in all areas, supported by a dedicated staff team." "Children are encouraged to make choices and decisions throughout the day, supported by a staff team that know them well."

These are just a few of the comments made in our fifth OFSTED Report (March 2008 - available via our website). The report reflects the high quality of learning on offer to all children at Edlesborough Under 5's and highlighted the quality of teaching by the staff. We are currently operating a waiting list for 2½ to 4½ year olds. If you would like to pop in for a look around, please phone Tracey on 07854 939226 between 9am - 12 noon, to arrange an appointment. A warm welcome awaits you.

**For registration details or to place your child on the waiting list,
please phone Sue Pickering: Tel - 01525 222199.**

"We are an Equal Opportunities Employer" www.edlesboroughunder5s.org.uk

**The Leighton Buzzard
Drama Group
present**

"Out of Focus"

**being staged at
Leighton Buzzard
Theatre
7th - 9th May 2009**

**Ticket Office:
01582 818801**

Edlesbray Players present

Colour me Happy

16th May

Eaton Bray Village Hall

Start 7.30pm - doors open 7.00pm

Ploughman's supper

Box Office open from 15th April
01525 222283

Tickets £7.50

In aid of Eaton Bray Village Hall

DUNSTABLE DOWNS ROTARY CLUB

CHARITY QUIZ EVENING

SATURDAY 18 April 2009

7.30pm

EDLESBOROUGH MEMORIAL HALL

TICKETS £9.00

TO INCLUDE PLOUGHMAN'S SUPPER

Please call Malcolm on

07768 415605 or 01525 222711

PLEASE BRING YOUR OWN DRINKS AND GLASSES

ALL PROCEEDS TO BE DONATED

TO THE IAIN RENNIE HOSPICE AT HOME AND OTHER LOCAL CHARITIES

Carnival Queen & Princess

St Mary's Village Carnival

Would you like to lead the Carnival Procession
and open the Fete on Saturday 4th July?

Are you aged between 8 and 13 years?

If so you could be the Carnival Queen or Princess
we are looking for.

To take part all you have to do is complete and
return an entry form (details right) and come along
to Eaton Bray Village Hall on

Sunday 26 April at 11.15am

when the Queen, Princess and two Attendants will
be chosen.

How to Enter

To find out more, please
telephone Yvonne
Ranson on 01525
220943 for an entry
form, or call at 42 The
Orchards, Eaton Bray.

**Entry forms should
be returned by
15th April.**



EDaN Youth Beetle Drive

7 - 9 pm on Friday 24th April at Dagnall Village Hall

* 1.50 per ticket including refreshments *

For young people aged 8 to 13 years

Prizes for winners

Come and enjoy this fun, fast, furious and frustrating game

Parents welcome to stay but not to play!

Please phone Liz Coates on 01442 842550
to reserve your place



Pay at the door



Quiz



Eaton Bray Village Hall

Saturday 18th April 2008

This fabulous quiz with quizmaster Keith Blackburn will
still include a free supper with the questions.

Bring you own glasses and drink.

7.30pm for 8pm

Just £8 per person.

Teams of up to 8 people

Fabulous prizes!

This event is organised jointly by Eaton Bray Tennis Club
and Eaton Bray Village Hall Fundraising Committee

For bookings contact Ross 221411 & Katrina 01582 661279



'Play Tennis' Day Saturday 20th June

at

Eaton Bray Lawn Tennis Club



***Come along and have FUN,
new membership joining deals***

'Play Tennis' day is a FREE tennis taster session for adults and children. There will be lots of fun tennis related games and activities, competitions, free giveaways, tennis equipment and clothes for sale by racketsportsdirect.com, BBQ and much more.

Join the fun

at

Eaton Bray Lawn Tennis Club on School Lane
12 Noon to 3pm

Contact Bernadette Hillman on 07958 714891 or e-mail
'bernadettehillman@hotmail.com' with any questions

**GAMES
FREEBIES
'GRAND' SALE!**

ebltc.org.uk

**COMPETITIONS
PRIZES
BBQ**

Eaton Bray Methodist Church

On Sunday May 10th at 10.30 am we are to celebrate our Sunday School Anniversary with a Family Service led by Ann Pape with the help of our young people. This is always a special time in our Church Family life, Do join us.

The “Ten o’clock Club” will be holding a Coffee Morning on Saturday May 16th from 10.00am until 12.00noon to raise funds for their current projects:- Hearing Dogs for the Deaf and continued support for the Baby Scanner at Luton & Dunstable Hospital. There will be Cakes, Bric-a-Brac and Fancy Goods on sale and everyone is welcome. A Date for your Diary :- Saturday June 6th “ Cream Tea’s & Garden Fete “ at Chestnut Lodge, Leighton Road, Grest Billington, home of the McFarlands.

February has been a very sad month for members and friends of our Chapel as we mourn the loss of two very special people, Maurice Sanders and Doug Reed.

Maurice Harold Sanders 8th June 1922 - 16th February 2009.

Maurice was born at 12 High Street Eaton Bray where he continued to live until October 2008 when he moved to Totternhoe. Apart from his time in the army during the war he lived and worked in the village and will be known by many locally for his expertise in Forestry and Timber Haulage and the many books he wrote on this subject. Proceeds from these books were donated to CORDA who fund scanners for mobile heart diagnostics. Following his own heart problem in 1984 Maurice had vowed to raise funds for scanners after Brompton Hospital, as he put it, “fixed me”.

Maurice was baptised in our Chapel and was an active dedicated Methodist throughout his life and was inspired to start the first youth club in the circuit at our Chapel in November 1949 despite reactions of “ extreme caution and outright horror” (Maurice’s own words) by some of the folk. In 1988 following a Youth Club Reunion Maurice’s comment was “ To meet men last seen in short trousers and women now grandmothers was emotionally demanding. Few are privileged to see the fruits of their efforts as this”.

We will miss deeply this elder statesman of our chapel. His support of creative worship, his continual reminder to us that our Sunday Schools are our future, his sense of humour and his wise words of encouragement to us all.

Our thoughts and prayers are with his daughters Margaret, Hilary, Ruth and all family and friends of this very special and unique man.

Herbert Douglas Reed 11th November 1928 - 18th February 2009.

Doug as he was known to family and friends came to our Chapel just over 12 years ago. He was always a very cheerful and positive man who despite his many illnesses bravely continued to come to chapel and always showed great interest in his chapel family.

Doug leaves a wonderful legacy of 5 sons, 1 daughter, 16 grandchildren and one great-grandchild, a loving devoted family who gave a most memorable tribute, to a very special person at his funeral service.

We thank God for the friendship and fellowship we shared with Doug and extend our prayers and heartfelt sympathy to all his family and friends.

Books
4th July 2009



St Mary's Village Carnival 2009

Preparations for this year's Carnival on 4th July are already well underway! Before then, we need to select the Carnival Queen, Princess and their two attendants. Would you like to lead the Carnival Procession and open the Fete on Saturday 4th July? If you are aged 8-13 and would like to do this, there is still time to apply but you need to act quickly. The Queen, Princess and attendants will be chosen on Sunday 26th April. It's easy to enter – complete an application form (phone Yvonne Ranson on 220943 and return the form to her by 15th April), then come along to Eaton Bray Village Hall on Sunday 26th April at 11.15am, where the winning application form will be drawn. Winners will wear outfits supplied by Confetti Bridal Wear of Tring, have their hair styled by High Street Hair and receive a beautiful flower posy from Buds of May.

Another deadline for Carnival is also approaching; if you want to advertise your business in the Carnival programme, please ensure that you have your advert confirmed during April, so that we can make sure it will appear as you want it to.

We're delighted to announce that this year's Carnival will be opened by Janet Hatfield, who is due to retire shortly, after 15 years as head of Edlesborough School. With several thousand children having passed through her care during this time, there will be many families in the area with reason to thank her for all the efforts she has made on behalf of our children and we are delighted that she can join us on this day.

There's still time to get involved in Carnival in many ways. Can you spare some time to man a stall on the day itself, or perhaps help set up or clear the site? We also need offers of transport for the equipment used in the carnival and people who can volunteer their lorry to take part in the parade. If you've goods or prizes to donate in our silent auction or can lend us tents, gazebos or marquees, we're very keen to hear from you! In particular, we are in urgent need of finding someone with NRSWA (New Roads and Street Works Act) accreditation who would be willing to set out the signs and barriers on Carnival Day.

For any of the above please ring Gordon Gray on 220136, or leave a message on our website – www.stmarysvillagecarnival.com.

Thank you for your support - and we look forward to seeing you on Edlesborough Green on 4th July!

Wednesdays
1:00pm to 2:45pm
(During term time)
Eaton Bray Village Hall

Cheeky monkeys

under fives play time

£1.50 per adult / £1.00 per child / 50p under 1yr

creative play singing
stories baby corner
craft juice & biscuit
tea or coffee and more!

Come along,
make new friends
and join in
the fun!

The Windmills and Watermills of Bedfordshire

- past, present and future

Hugh Howes

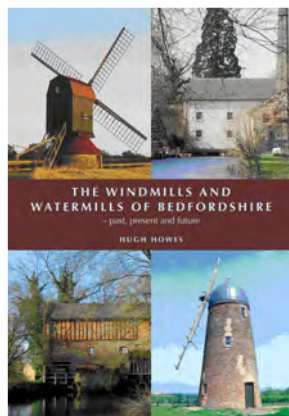
Over a hundred windmills and watermills in over 80 parishes once played a crucial role in Bedfordshire's rural industrial economy. Most of the mills which still existed before the Second World War have long since disappeared together with a whole way of life swept away by a modern industry.

Several do survive, although most are in a ruinous state. Stevington windmill and the watermills at Bromham and Stotfold, however, have not only survived but are open to the public and this book offers an invaluable guide in explaining their features to the modern visitor.

It also provides a history of milling in the County including some insights into the skills of those that worked at these mills. It then examines all the other surviving wind and watermills and some of the problems concerning restoration, conversion and after-use of this important part of the County's heritage.

The publication contains references to our own local mills, Doolittle Mill and Bellows Mill.

Available in all good bookshops.



Can you think as far ahead as 14th June 2009?

**It will be light. It will be warm.
We will all be enjoying our gardens.
Time then for:**

**OPEN GARDENS
2009**



To stage this successful event for a fourth year we will need some new gardens as well as revisiting favourites from previous years.

Can you help?

If you might be prepared to open your garden either as a newcomer or an old hand please contact Kay Griffiths 01525 222849.

You will be contributing to a growing community event and raising money for charity.

Stuart Ball

**Ceramic Wall & Floor
Tiling Specialist**

Over 26 yrs Experience



**City and Guilds
of London Institute**

Tiles supplied or Labour Only

**For a reliable service call
your Local Tiler**

Eaton Bray 229381

N.D.S.

General Building & Plumbing
(Established over 15 years)

- Extensions - Loft & Garage conversions etc.
- Kitchens & Bathrooms fitted
- Installer of PVCu guttering, soffits & fascia boards
- Roofing • Patios & Block Paving

Tel: 01525 221470

Mobile: 07941 563424

FREE ESTIMATES

...

NO JOB TOO SMALL

**Unique
designs**

- Full design - manufacturer and installation
 - Free planning and free estimates
 - Any size/shape/colour scheme
- Traditional & contemporary door styles
- Natural woods and solid colour finishes
- Home offices also designed & installed
 - 5 year guarantees



**Unique
BEDROOMS DIRECT**

Visit our Showroom at:
Unit 28,
Icknield Way Farm,
Tring Road, Dunstable,
Beds LU6 2JX



www.uniquebedroomsdirect.co.uk

01525 229331

**PUERTO BANUS
MARBELLA
SPAIN**



Recently built luxury 3 bedroom, 2 bathroom apartment approx 1 mile from centre of this well known Spanish marina. 45 mins easy driving from Malaga airport, served by Easyjet, Monarch etc.

Facilities include all mod cons including air-con, satellite TV, fully equipped kitchen, swimming pools, excellent clubhouse and tennis courts. Many golf courses and all weather bowling greens nearby. Climate makes this ideal for holidays throughout the year. Rates vary according to season (£300 - £750)

For a brochure and details call Peter or Celia on **01525 220173** or visit the website at www.479losnaranjos.co.uk.

Golden Years Day Care Ltd
For The Elderly

- Pick up / Take home by car
- Held in local community rooms
 - Fully trained staff
- Visiting hairdresser/beautician/podiatrist
 - Full daily programme
- Home cooked meal and refreshments throughout the day
 - Fully insured
- Regular day trips (at extra cost)
 - Fees paid in advance

Call Sue Tearle (01525) 852764
Katrina Fountain (01296) 429785
E-mail : susantearle@tiscali.co.uk

Company Reg No 656574

**HPC Registered
CHIROPODIST & PODIATRIST**



(Also Central Luton surgery - open 6 days)

**R.J.O'CONNELL
BUILDING SERVICES**
EXTENSIONS, PATIOS,
DRIVEWAYS, ROOF REPAIRS
AND PROFESSIONAL
DECORATING SERVICE
TEL: 01296 681323
MOB: 07855 236726

*Painting/Decorating Curtain Rails
Kitchen Fitting Tiling Shelving/Flat Packs*

YOU need LITTLE JOBS if



Shelves scare you, flat pack frustrates you
or mowing doesn't move you,
you need someone to **Do It for You**

For your General
Home Maintenance needs

**Contact Carl Bird on 01582 703039
or Mobile 07773 230055**

*Floor Laying Gutter Cleaning Fencing
Loft Boarding Gardening etc.*



Eaton Bray Lawn Tennis Club

Six weeks into our new committee under the rigorous leadership of Madame Bernadette, and already there's a feeling of excitement about all our plans for the coming season. We come of age this year, as this spring sees the 21st anniversary of that first small gathering of tennis-minded enthusiasts in the Coffee Tavern back in 1988. It's amazing to ponder that our club has been in existence for longer than the Nurseries development, and even the invention of the internet! So with all the positive vibes emitting from our little band of members, we'd love you to share our feelings of optimism this coming year, and come along and join us! Here are a few reasons why you might enjoy some tennis in Eaton Bray ...

- Membership fees held at last year's levels. That means a whole family can enjoy a year's tennis for around £10 per month. A junior member pays less for a whole week's playing than the cost of a single Daily Mail – so there's no competition really!
- Three courts – all bookable and accessible by your own personal solid brass key.
- 8 Teams entered in the League this year – with free tea and sandwiches for away matches!
- Floodlights! These magnificent illuminations, allegedly purchased by ex-chairman John Palmer from BHS Homeware in Luton, now allow play 24 hours a day (providing you switch the lights off by 10pm!)
- A dedicated Clubhouse with changing rooms, toilets, tables, chairs and famous wonky cupboard.
- Social playing sessions on Tuesdays and Sundays – everyone made welcome whatever standard.
- Our own dedicated website – www.ebltc.org.uk - with all the latest news and gossip from the club.
- A 'Buddy' system for new members – someone to offer support and encouragement.
- Our own Professional Tennis Coach! An ex-Great Britain player, Nick Boys is available for 1-2-1 or group coaching and specialises in Junior's coaching on Saturday mornings, beginners upwards. No wonder the other South Beds teams quake in their trainers when they see us coming!
- Come and try our Electric Ball Machine! Nick swears by it (and frequently at it...)
- And last but by no means least, a Social Calendar that includes:

Saturday 11th April: Round Robin competition at the courts, a fun contest with strange rules that most people master within a couple of years, it's just as much fun to watch as to take part!

Saturday 18th April: Quiz night at the village hall. £8 per person, with the usual excellent food thrown in (not literally). Call Ross on 01525 221411 to reserve your place.

Saturday 20th June: Our annual Play Tennis Day. This is a **free** tennis taster session for both adults and children, members and non-members, so bring along as many friends and family as you can muster; we'll have spectacular offers available for any new members joining on the day! There'll be lots of fun tennis related games and activities, competitions such as Fastest Serve and Longest Rally against the Coach, free giveaways, tennis equipment and clothes for sale, plus our famous BBQ (small charge applies but there'll be up to 48 menu options)! Our ball machine may make a special appearance too... so come along and have some fun for a few hours, even if just to sit in the sun with a burger and chips (bring your own chips...)

More dates to come soon, including our Club Final's Day in September, more Round Robins, and another potential Quiz Night in October.

So there you have at least 11 good reasons to call us to find out more about how to both get fit and enhance your social life all at the same time!

For any further information about the club, including when we get together for our social tennis sessions up at the School Lane courts, or our various activities, you can visit our website at www.ebltc.org.uk; Alternatively call Bernadette Hillman on 01582 602587, Coach Nick Boys on 07810 832774, or if they're all out and I'm not having another argument with the ball machine, me, Andy Cross, on 01582 477114.

Table Corner

Are we what we eat?

Well, this is an age-old concern and one that brings many stereotypes to mind. Some years ago, the London Institut Francais, keen to advertise the breadth of its French language courses, put out a poster simply picturing the stages of development of a frog, from egg through tadpole to full maturity. The motif did not require any further explanation as it was understood by all. To learn to be French you need to become a frog ... and the French do eat frog legs.

Well as a French cuisine specialist, I feel morally obliged to clarify this stereotype. Do we eat frog legs? No. Well alright, only very occasionally and mostly at home, or in touristy areas where local restaurants make their living overplaying the point!

The other stereotype about French cuisine is that it is an elaborate affair involving at least a dozen courses and different wines ! Heavy and complicated. In fact nothing could be further from the truth. The French actually love and live on simple food. However, what they do is truly value the quality and freshness of ingredients. How else could they get away with having baguette, saucisson and cheese for dinner almost every night of the week?

And somewhere in France I bet a paper is being read right now, over crumbs left from a finished baguette, and French eyebrows are being raised at the thought that the British don't eat roast beef each and every day. And that they also aspire to really good food. Perhaps we are what we eat, but we are not what people assume us to be.

If you would like to try real home made French cuisine hire me to cook a meal for you and your friends, at very reasonable rates.

Pascale, The Little Dagnall Catering Company, 01442 842 857 or 07900 498476
www.dagnallcatering.co.uk



Edlesborough Book Group Review

Engleby By Sebastian Faulks



This novel is written in the form of a memoir and we are introduced to the life and times of Michael Engleby, spanning the years from the 1960's to the present day. We meet him initially in his second year at university, a bright scholarship boy from a poor background, who has joined the privileged ranks of students at what appears to be a Cambridge college. We gradually discover that Mike, as he prefers to be called, is odd. He is writing his life down as he sees it, but we as readers start to feel a little uneasy about him and the way he conducts himself. He is a petty thief who drinks to excess, dabbles in drugs and is apparently untroubled by a conscience. He appears to have an encyclopaedic memory, likes music and joins college societies. But he is an obvious outsider, a loner on the fringes of other peoples' lives, deluding himself that he is part of the group. These delusions take a sinister turn when he becomes infatuated with a fellow student and begins to fantasise about her, convincing himself that she returns his feelings, when in fact, she is barely aware of his existence.

As he is writing about his student days, Engleby reminisces about his unhappy childhood and his experiences at boarding school and we gradually come to understand just how damaged he must be. As his life progresses, he chronicles the changing attitudes and social nuances of Britain, but we are not sure by this time, how much of his experiences are in his imagination.

Although Mike Engleby is a thoroughly unpleasant character, the author succeeds in obtaining some sympathy for him, whilst giving some insight into mental disturbance.

The book evoked some very strong opinions and our group was divided in its verdict; we either loved or hated it. We discussed the social themes it introduced and also speculated on the possible diagnoses of Engleby's condition. Most of us enjoyed the novel and would recommend it as a good book for group discussion.



The National Trust South Beds Assn

Wednesday 1st April

**Public Statements and Private Lives:
British church monuments through
the ages**

Jane Kelsall - Lecturer in fine arts
**7.45pm, Salvation Army Centre,
Bull Pond Lane, Dunstable**

Visitors are welcome at £1
*For further information
phone 01582 583688*

Dunstable & District Local History Society

Tuesday 14th April, 7.45pm

Redbournbury Watermill
Flour making the traditional way
by Justin James

Methodist Church Hall, Dunstable

Visitors always welcome

Letter to the Editors
The Great Eaton Bray Skateboard Park Debate
Who are you?



Me

I'm Julian Hicks and I live near to Eaton Bray park, on the Nurseries and you will usually see me walking the village streets in a cowboy hat, just an extra pointer for you.

Tonight while I was quietly watching TV, some brave but undistinguished soul sneakily dropped a letter through my letter box complaining about all the things that could go wrong with the proposed skate-park in Eaton Bray.

A very brave thing to do, deliver those letters in the dark and conceal your identity.

Who are you? Please let us all know.

Be brave and come forward and voice your complaint in public not behind the cover of a dark night and an unsigned letter, or are you a nimby vampire?

But you won't will you?

At the meeting held on the 12 Feb in the coffee tavern, I stood up and was brave enough to tell those present who I was and that I believe this skate park should go ahead. I noticed that NONE of the objectors gave their names, or stood up to be identified, but were vociferous in the objections.

I take issue with what you say about the park being too small for the proposed skate board area. It is amply big enough and currently under used I never see more than 3 people walking their dogs at a time, none ever appear to use the proposed area and like most dog walkers in most parks they walk the perimeter.

The noise levels will not be any greater than the football matches that take place in the field behind the park. All of the houses are far enough way for most of the sound to dissipate before it affects anyone.

You are making assumptions about all the points you raise. Hemel is a very large town compared to Eaton Bray and therefore attracts a larger crowd. Graffiti is something that can be overcome. Report mal-contents when you see them, as I do.

The recreational area in the Rye is, as I understand it, a social club facility donated by a benefactor for football, not a public area. If the skate park were to be placed there it would be closer to housing than in the park.

It is not the population of Edlesborough who are asking for this but those of Eaton Bray, therefore the post office argument is null and void.

As for a garden area, well what do you think the vandals would do with that? Would you be willing to police it? If you are who I think you are then no, you haven't the courage to face peers let alone the persons unknown who would most likely destroy it, but then I'm making an assumption here just like you are.

I will write to Andrew Selous, David Marriage and Keith James stating my support for the project and I hope that many others will too.

I look forward to meeting you face to face

Julian Hicks, The Nurseries, Eaton Bray

Room Therapy... for a Fresh Start!

Clear your mind..... De-clutter your life.....Get more organised.....

A good sort through of all your things from your wardrobe to your make-up bag, from the kitchen cupboards to your cutlery draw, is just like therapy, it can give you such a boost, and can be all you need to get a hold on life again and feel in control.

With the best intentions, we can all sometimes fall into a disorganised rut in one way or another. We lead such busy lives with work, family and house-keeping, and if we're lucky with sport, hobbies and interests, that little by little we suddenly stop being on top of things.

It's at this stage that frustrations creep in and arguments start, and before long your feeling angry with yourself and those who are supposed to be helping with the chores. Coming home to a mess can cause stress to you, and the whole family. Tempers erupt about who should be doing what, how often and when.

Or maybe, for one reason or another, you simply cannot concentrate or build up the energy required and things just get worse. You may have just come out of a relationship, be in bereavement, or simply have been ill and need help getting back on top of things again so you can move on with your life...

“Does this sound like your life or someone you know” ?

If so... then **‘ROOM THERAPY’** is for you. You may only need one room organising or you may need several. But room, by room, we come along spring clean, de-clutter and organise a place for everything. We can get you up to date on that ironing and anything else required to get your life running smoothly again. You may keep it going yourself thereafter, or in six weeks, or six months ask us to come in again. Either way that's your choice.

‘ROOM THERAPY’ is not an expensive luxury, we can assure you this will be the best investment you have ever made to support your well-being and gain a better quality of life. **‘ROOM THERAPY’** is for you, and for all the family, as we take the pressure off everyone so the time you have together is...quality time!

So whether it's for you, or for someone you would like to help, call **‘ROOM THERAPY’** today, and get you, and your home back on track and find time to enjoy life again!

Prices start from just £10 an hour – For further information and a personal quote Telephone: 07912 254384.

**Edlesborough
Parish Council Meetings
3rd Thursday of every month
7.30pm Memorial Hall
Next meeting: Thurs 16th Apr 09**

NORTHALL BAPTIST CHAPEL

Chapel Lane, Northall

(just beyond the speed limit signs on the road to Leighton Buzzard)

Everyone is welcome to our Sunday worship each week between 11am and 12.30pm including tea/coffee and time to talk together For more information contact: Steve and Helen Orchard 01525 373106

There has been a Baptist Chapel in Northall for more than 200 years. Today we continue to seek to worship God, serve him in our daily lives and support and encourage one another in the difficult and the joyful times.



www. **DRIVESTYLE VANS** .co.uk

NOW you can buy our vans directly via our new WEBSITE.



LOW COST VAN & TRUCK HIRE

You Can't  Our Vans

Call Us Today to Book Your Vehicle

Flitwick Depot
01525 715 000
High Street Flitwick MK45 1DU

Milton Keynes Depot
01908 319 777
Haversham Road Wolverton
Milton Keynes MK12 5TN

Dunstable Depot
01582 600 465
31-37 London Rd
Dunstable LU6 3DH

Leighton Buzzard
01525 211 175
Watling St, Hockliffe
Leighton Buzzard LU7 9LJ

S E W S O F T
interiors

- ❖ Handmade Curtains and Valences
- ❖ Roman, Venetian, Vertical and Roller blinds, Cushions and Upholstery
- ❖ Tracks and Poles
- ❖ Everything beautifully made and fitted to the highest standards
- ❖ Exceptional personal service in your home, taking care of all the details, reducing your stress
- ❖ You can use your own or choose from a range of the latest fabrics as well as the more traditional favourites

Call me
Sue Hawkins on
Whipsnade (01582) 873358
Mobile: 07774 140526
Email: design.workshop@hotmail.com

What do you have to sell?

Sell it on eBay!

We'll Sell **ANYTHING** for You
Make money from those unwanted items to hidden treasures

Business enquiries welcome

Nick and Emma

01525 220256

Or visit us at

Buffalo House Collectable Pottery Centre
Mill Road Slapton

And enjoy our Aladdins cave of old and new pottery, Moorcroft, Martin Brothers, Torquay Mottoware, Muggins stoneware and much more



DIGITAL & ANALOGUE

TV & FM Radio Aerials

Satellite Installations

Extra TV & Satellite Points

FREE ESTIMATES

☎ 01525 852912

☎ 07710 429678

Feeling Crafty

Learn to make greetings cards or to scrapbook, have fun with your friends, get the supplies you need. Classes, Demonstrations and Parties. Card & Invitation commissions undertaken.

Contact Bekka on

07990 837990 or 01525 220794

Email: bekka@feeling-crafty.co.uk

www.feeling-crafty.blogspot.com



WESTROPE BROS.

LAWN MOWER SERVICES

ALL TYPES GARDEN MOWERS SERVICED

THE RYE, EATON BRAY

Tel: Eaton Bray 220587

RD ELECTRICAL

Specialising in all types of Electrical and Air Conditioning installations including:

- ◆ Inspection and Testing
- ◆ Garden and security lighting
- ◆ Energy efficient lighting
- ◆ Re-wires
- ◆ Specialist lighting – bespoke designs
- ◆ Kitchen and Bathroom specialist

Air conditioning throughout your home
All work guaranteed.



Call Richard on:
01525 221475
07932 759680



For a no obligation quote

**MOT
TEST CENTRE**

**ROEBUCK GARAGE
HIGH STREET
EATON BRAY
220385**

**McTimoney
CHIROPRACTIC**



Margie Craib BSc BHSLDC AMC MMCA
Human and Animal Treatments

Ashridge Farm, Ringshall, Berkhamsted, Herts HP4 1ND
Telephone: (01442) 842729

General Chiropractic Council Registration No. 293



Moren Associates Limited

Virtual administrative support to
businesses & private individuals

Word processing
Spreadsheets
Desktop publishing
Presentations
Typing
and more...

Tel: 01525 229695

Email: enquiries@morenassociates.co.uk

www.morenassociates.co.uk

**ADRIENNE'S
PRIVATE HIRE**

Call for a **FREE** quotation
Book early to avoid disappointment
Very competitive prices

Airport Transfers
& Private Hire

07980 039715

*Our executive Cars, 6 seater Minibuses and
lady driver are all available*



**Rose
Cottage
Interiors**
for Quality
**Hand Finished
Curtains**

Soft Furnishing, Interior Design
& Upholstery Service
Fabrics available

Handmade Curtain Specialist
Swags & Tails • Pelmets •
Valances • Tie-Backs
Clients own fabric welcome

Jane Euston • Rose Cottage
Northall Road • Eaton Bray
Tel/Fax: 01525 221034

**GRASS ROOTS
GARDEN MAINTENANCE**

Including
TREE SURGERY
SELECTION, SUPPLY & PLANTING
OF TREES, SHRUBS & HEDGES
(Fully insured)

BRIAN McMAHON NCH (Arb)

Tel: 01525 221960

THE COMPLETE BUILDING SERVICE

S.M. REILLY & SON

Established 1987

GENERAL BUILDERS

Extension Specialists

Tel: 01525 221740

Mobile: 07970 637511

Plastic Fascia & Soffit - Double Glazing
Windows - Doors - Conservatories
Decorating - Drives - Porches
Barn conversions - Roofing



Tel
01525 222145
Mobile
07971 559185

Lee Hutt

Heating and Plumbing Services

FREE ESTIMATES GIVEN
NO CALL OUT CHARGE
ALL WORK UNDERTAKEN
INSTALLATION, REPAIRS
NO JOB TOO SMALL
DOMESTIC & COMMERCIAL



JMC PEST CONTROL

Very competitive rates. Fast efficient service.
Wasps Ants Fleas Cockroaches Flies Rats Mice



Professional, discreet service.



Contracts welcome

Tel/fax: 01582 - 471766

Mobile: 07973 - 407027

jmcspringbank@aol.com

Don't put up with aches & pains!

Treatment for a fast recovery, injury prevention
and advice, for you and your family to lead a
healthy and active life

Health

Physiotherapy
Paediatric Physiotherapy
Acupuncture
Women's Health
Podiatry
Chiropody
Body Alignment
Ergonomic Assessment

Well Being

Pilates
Acupuncture
Reflexology
Sport and Soft Tissue
Massage

Member of The Organisation
of Chartered Physiotherapists
in Private Practice

01525 377751

enquiries@stjudesclinic.com

www.stjudesclinic.com

St. Judes

physiotherapy, health and well being

G & J Groundwork

Ring Garry

01582 477568

Mobile

07949 118011

Fencing Panels • Blockpaving
Shingle Drives • Paths • Slabs
Paving • Steps • Gardenwalls
New Patios • Relaying
Soak Aways • Drainage
Free estimates or advice
References

Trading Faces



Beauty Salon

FACIALS ♦ EYEBROWS ♦ EYELASHES
 ♦ MAKE-UP ♦ NAILS ♦ MANICURE ♦
 PEDICURE ♦ CHIROPODY ♦ MASSAGE ♦
 WAXING ♦ ELECTROLYSIS ♦
 BODY TREATMENTS ♦ SELF TANNING ♦
 SLIMMING TREATMENTS ♦ WASH ♦
 CONDITION ♦ CUT ♦ BLO-DRY ♦ COLOUR
 HIGHLIGHT ♦ TINT ♦ PERM

You'll find every Top-to-Toe Hair & Beauty Treatment you could ever want at;

Trading Faces

Wallace Drive • Eaton Bray • Beds • LU62DF
(Next to Threshers Off-Licence)

TEL: 01525 229111

OPEN TUES TO SAT 11.00AM TILL LATE

Hair-Beauty-Chirophy

G.R. Davis LCG

Eaton Bray

Cabinet Maker • Carpenter • Joiner

House Interiors

Handmade Kitchens

Can also supply and fit Crown Imperial
kitchens, wardrobes and desks

Home: 01582 600086

Mobile: 07759 856566

D & E HINES

High-Class Butchers

Quality Beef, Pork & Lamb

Grade A Poultry

BBQ & Sausage Speciality

Renowned for 'Bunkers Sausages'

Telephone: 01525 220413

**GREAT
Outdoors & IN
CLEANING SERVICES**

PRESSURE WASHING

- Block Paving & Pattern Imprinted Concrete (PIC) Refurbished
- Driveways / Patios / Paths
- Walls / Fences / Roofs
- Guttering / Fascias & Soffits
- Graffiti / Chewing gum removal

FULLY INSURED

EXTERIOR CLEANING

- Conservatories - Hand Cleaned (Inside / Outside)
- Litter / leaf collection

INTERIOR CLEANING

- Office cleaning
- Carpets & Upholstery (ALL STAFF PROCHEM TRAINED)
- Hard floors Refurbished

0800 298 5883

FOR MORE INFORMATION VIEW OUR WEBSITE

www.greatoutdoorsandin.co.uk

37 Oldhill, SW Dunstable



MEMBER OF THE FEDERATION OF SMALL BUSINESSES

Energy Saving Light Bulb Myth Buster

Why use them?

Compact fluorescent light bulbs (CFLs) use 80% less electricity, save you about £3 a year each, and last up to 12 times longer than old fashioned tungsten bulbs.

What are they?

Think of them as compact versions of the strip lights in work places since the 1950s.

Have they improved?

You can now get all shapes and sizes, fittings and levels of brightness, including 150W equivalent and dimmable options. A recent blind test of 761 shoppers, found that 64% preferred the light from them.

Is it better to leave them running?

No, switching them on uses the equivalent electricity as leaving them on for a few minutes. Most now light instantaneously.

How should I dispose of them?

Use the service your municipal tip provides for the safe disposal of fluorescent tubes.

Is mercury an issue?

Ironically, installing CFLs ought to help reduce the need for coal-fired electricity production - a major cause of global mercury emissions. CFLs contain mercury - about 5mg. Locked into its tube, this is harmless.

What should I do if I smash one?

Ventilate the room for 15 minutes. Put on your rubber gloves, brush the bits into a bag, seal it and drop it at the tip next time you go.

Are tungsten bulbs banned?

No. Manufacturers have agreed to withdraw them for sale, starting with 100W this year, 60W in 2010 and 40W in 2011.

Where can I find out more?

Contact the Energy Saving Trust on **0800 512 012**.

All Saints, Dagnall - Services in April 2009

Sun. 5th April 9.00 am Eucharist
 10.30 am Morning Service
Fri. 10th April 6.00 pm Special Service for Good Friday

Easter Day

Sun. 12th April 10.30 am Family Service
 6.00 pm Sung Eucharist
Sun. 19th April 10.30 pm Family Communion
 6.00 pm Evening Service with Holy Communion
Sun. 26th April 10.30 am Family Service
 6.00 pm Evening Prayer
Sun. 3rd May 9.00 pm Eucharist
 10.30 am Morning Service
 6.00 pm Evening Service

Sunday School meets each Sunday at 10.30 am



CLEAN MACHINE

01582 608855
07721 550165

PROFESSIONAL DOMESTIC AND COMMERCIAL CLEANING



Chartered Surveyors - Valuers - Estate Agents

Run by Branch partners Colin & Linda, we offer a friendly, professional, caring approach to the often stressful process of house moving.

3 Summerleys, Edlesborough, LU6 2HR

Tel: 01525 222333

www.christopherpallet.com



GYM & TONIC

WANT TO GET FIT, HAVE A HEALTHIER LIFESTYLE & IMPROVE THE WAY YOU LOOK & FEEL?

The following can be provided in our Gym in Edlesborough or in your home

- * A Health & Fitness Consultation *
- * Personal Training * Massage *

Ruth Anderson Dip. PT & ST, Member of: Inst of Sports Therapists & Register of Nutritional Therapists

Tel:01525 223074 Mob:07812 163979



Studham Lane, Dagnall,
Hertfordshire, HP4 1RH
Tel 01442 842310



Email: secretary@whipsnadeparkgolf.co.uk
Web: www.whipsnadeparkgolf.co.uk

Whipsnade Park Golf Club

Beautiful Parkland 18 hole Par 73 Golf Course, Driving Range & Short Game practice facilities

Memberships are available and societies welcome

Beginners Classes & Junior Academy LTPD Programmes, Quick Fix & Playing Lessons all available with our PGA Coaching Staff

For our neighbouring residents we are delighted to offer

10% Discount on Green Fees Or Lessons with this Ad

Dress Code applies, bookings subject to availability and cannot be used in conjunction with any other promotion

Anne Brierley Designs

Designer/Pattern Cutter/Dressmaker

Specialising in Bespoke Designer Bridalwear and Lingerie

Other Services available include:

- Made-to-measure
- Special Occasion Wear
- Alterations
- One-Off Designs
- Freelance

To find out more about how we can help you with all your sewing needs
Contact

Anne Brierley on 01525 220809
or mobile 07886737881

email : annebrierley@btconnect.com

website : www.brieranim.co.uk

Dagnall School

A Buckinghamshire co-educational school
For 4-7 year olds



'Dagnall School provides a happy and safe environment. The children are always involved in lots of activities that make learning interesting and enjoyable. My child is very happy here' Quote from a parent during our recent Ofsted inspection. (June 2008)

This is a good school. Pupils make good progress and their personal development is outstanding. Standards are well above average in reading, writing and mathematics (Ofsted June 2008)

Dagnall school offers

- small classes
- a broad and interesting curriculum
- a wide range of extra curricular opportunities
- excellent care and support
- a school that has excellent community links

Does this sound like the kind of school you would like your child to attend?
Then come and visit us and meet our lovely children and dedicated staff.

Website www.dagnall.bucks.sch.uk

E-mail office@dagnall.bucks.sch.uk

Tel & Fax 01442 842473



J.G.S. Metalwork & Son

Specialists in Gates & Gate Automation

Access Control • Security Grilles • Railings
Balconies • Weathervanes

www.jgsmetalwork.co.uk

Call in to discuss your ideas

High Street, Edlesborough LU6 2HS

Tel: 01525 220360 Fax: 01525 222786

Pressing Need

Ironing, Laundry & Dry Cleaning Service

Free Collection & Delivery
from home or office

Executive Shirt Service (Wash & Pressed)

Duvet Service (washed and dry)

For more information or to book a collection

call 01582 667332 or 07885 320042

or email: ironout@aol.com

SPRAY TANNING & NAIL SALON above Buds of May

seventh heaven

HAVE A GOLDEN TAN & PERFECT NAILS ALL YEAR
ROUND WITH THE HELP OF SEVENTH HEAVEN!

- ♥ Fake Bake® America's No1 spray tan
- ♥ Bio Sculpture gel overlays & sculptures
- ♥ Acrylic nail extensions
- ♥ Manicure, Pedicure & Callus treatment
- ♥ Ear piercing
- ♥ Make Up application
- ♥ Bespoke parties

Call us for more details

SEVENTH HEAVEN 2a HIGH STREET EDLESBOROUGH
01525 222918 / 07863 133577 / 07725 553530
angels@seventhheavenuk.co.uk
www.seventhheavenuk.co.uk

Absolutely Plastered



**DOMESTIC/COMMERCIAL, CLEAN AND RELIABLE SERVICE,
FREE ESTIMATES, FRIENDLY ADVICE**

- * Plastering & Coving
- * Floor Screeding
- * Pebbledashing & Rendering
- * Dry Lining
- * Cornices & Mouldings
- * Insurance Work Undertaken

CALL NICK CONWAY ON

Mobile: 07751 830716

Tel: 01525 221877/01442 269565

26 School Lane, Eaton Bray, Dunstable, Bedfordshire LU6 2DT



Illustria Kennels & Kathotel

Mick and Denise Garrod
Proprietors

Offer your pet a fully licensed Dog
and Cat boarding service

Purpose-built Dog kennels

Individual Cat chalets with
outdoor exercise runs

All in pleasant country surroundings

WELLHEAD BUNGALOWS,

TRING ROAD,

DUNSTABLE,

BEDS LU6 2JU

TELEPHONE:

(01582) 665343



Neil Hodson Associates

Consulting Structural Engineers

24 HIGH ST TRING

OFFER A COMPREHENSIVE RANGE OF
**PROFESSIONAL BUILDING DESIGN,
ADVISORY AND DRAWING SERVICES**

From plans for domestic extensions to
multi-storey offices, commercial
buildings and factories.

Structural surveys, site surveying,
advice on building defects and
Feasibility Studies

Planning Applications and Building
Regulation Consents obtained.

Tel 01442 890894 OR

Edlesborough 222462

KEITH GRADLEY ELECTRICAL

83 High Street, Eaton Bray

Tel: Eaton Bray 222303

Mobile: 07976 640869

For all Domestic, Commercial and
Industrial Wiring and Plumbing
Storage Heaters, Showers etc.

Security Systems Installed

Test and Inspections

Free Estimates and Advice

WANT FINANCIAL FREEDOM?

We're looking to expand our £36 million UK
organisation with committed, ethical, hard-
working people who like to help others.

If you've a managerial, teaching, training,
HR or self employed background we've
excellent opportunities for you to develop
an extraordinary income yet work around
existing commitments. Flexible and home-
based business suits part or full time.

Call Amanda Wright on **01525 221001**
or **07956 366053 - TAKE CONTROL!**

ALAN BARNARD BUILDING REPAIRS

ESTABLISHED 1967

NO JOB TOO SMALL

- ALTERATIONS & REPAIRS
- NEW KITCHENS & BATHROOMS
- BUILT IN WARDROBES
- PAINTING & DECORATING
- U.P.V.C FACIAS & SOFFITS
- WOOD OR U.P.V.C DOORS &
WINDOWS
- WOODWORK

20 WELLHEAD ROAD

TOTTERNHOE, BEDS

01582 609726 & 07774 247658



Is your money working hard enough for you?

- Your mortgage** – is it on the best deal possible?
- Your insurance** – is it value for money? Have you reviewed if you have sufficient life, income or unemployment protection?
- Your savings** – are your ISAs and other savings / investments performing as you expected?
- Your retirement** – are your pension plans on-track? If you are retiring soon, are you ensuring you get the best annuity rates?

For a no obligation initial discussion contact Paul Pearce APFS, your local Independent Financial Adviser and see if he can help?



Email: paul@finpru.com
Telephone: **01525 220 480**
Financially Prudent (IFA) Ltd,
23 The Green, Edlesborough, LU6 2JF



Financially Prudent (IFA) Ltd is authorised and regulated by the Financial Services Authority



VANSAR BLINDS

Domestic and Commercial Specialists
In All Types of Blinds and Awnings

Local Family Business est. since 1984

- ◆ Vertical
- ◆ Venetian
- ◆ Rollers
- ◆ Wood Weave
- ◆ Roman
- ◆ Pleated
- ◆ Wood Venetian
- ◆ Conservatory Blinds
- ◆ Patio Awnings

**For a Friendly & Reliable Service
Free Measuring and Quotations**

Supply and Fitting
Contact Mark Allen
on

01525-220477

07711 257473

www.vansarblinds.co.uk

Weddings * Birthdays * Anniversaries
 Funerals * Social Functions * Balloons
 Corporate Contracts * Fashion Jewellery
 and much more ...



For all your floral requirements

Full Teleflorist member deliveries worldwide

Opening Times

Monday – Friday 9.30 am – 4.30 pm
 Saturday 9.00 am – 1.00 pm
 Sunday closed

2 High Street, Edlesborough, Beds, LU6 2HS

Tel. 01525 221920

Email: Sam@budsOfMonthlorist.co.uk

MICHAEL HUBBINS

TELEPHONE ENGINEER

Installation of Telephone Extension Sockets
 Digital, Satellite & Internet Sockets

Also Domestic Electrical Work Undertaken

Tel: 01582 471648

Mobile: 0771 8834851



**Stephen D.
 Janes
 Est. 1982**

**CARPENTRY, JOINERY
 KITCHENS FITTED
 PROPERTY MAINTENANCE
 TELEPHONE: 01525 220649**



WOODSIDE CLINIC

OSTEOPATHY, PHYSIOTHERAPY,
 CRANIAL OSTEOPATHY, CHIROPODY/
 PODIATRY, PILATES AND VARIOUS
 MASSAGE THERAPIES

**Provided in our great new
 facilities by friendly, caring staff**

88 Great Northern Road,
 DUNSTABLE, Beds. LU5 4BT
Tel: 01582 608400

28A High Street, LEIGHTON
 BUZZARD, Beds. LU7 1AH
Tel: 01525 372447

Also in SHEFFORD, near Hitchin
www.woodsideclinic.co.uk

Anne Johnson D.O.

Registered Osteopath

6 Moor End, Eaton Bray

01525 221958

07957 250682

Daytime and Evening

Appointments Available



Digital +

Aerial & Satellite Systems

Tel: 01525 237498

Mobile: 07970 260518



www.digitaltelly.tv

Every child matters at Edlesborough School!



‘Standards reached by learners are good’

**‘Personal development and well-being of
learners is outstanding’** OFSTED 2008

Edlesborough School is a co-educational village school for children from 4 to 11. We provide the benefits of a continuous primary education and the broad experience of a highly professional and caring staff.

Our aim is to help all children achieve their maximum potential as individuals and as members of society.

**We would welcome the opportunity to show
you round our friendly school.**

**Please ring Janet Hatfield on 01525 220431
www.edlesborough.bucks.sch.uk**



Edlesborough Parish Council (including Edlesborough, Dagnall and Northall) News

New Councillor

The Council are very pleased to have co-opted Mr. Mark Wilson onto the Parish Council as a representative of Northall Ward.

Canon Malcolm Grant

A Retirement card has been forwarded to Malcolm and the Parish Council send him good wishes for the future.

Cemetery Access

All quotations have been received for the proposed new access route to the Cemetery. A further site meeting will take place to clarify that one of the quotations does include for everything that is in the specification. Funeral Directors will be in attendance to ensure they are satisfied with the proposal.

Pot Holes

Buckinghamshire County Council has taken on more ‘gangs’ to deal with the potholes caused mainly by the recent inclement weather and are treating this as a priority throughout the County.

Budget

The budget was confirmed at the February Parish Council meeting.

Website

The Parish Council apologise to regular viewers of the website as due to a Server problem this had reverted back to 2007. All is now up to date.

Speed Limit Review

It has been confirmed by Bucks CC that the Speed Limit Review for Area 13 will begin in April/May this year. The proposal to reduce the speed limit through Northall to 30mph is listed on the Review.

Speedwatch

The Council have agreed to purchase Speedwatch equipment if a ‘shared ownership’ with another Parish is not possible.

Dog Fouling/Litter

The inexcusable behaviour of some dog owners is causing excessive dog fouling throughout the Public Footpaths, Rights of Way, pavements and open spaces creating a Health & Safety issue and making parts of some pavements unwalkable. Further notices will be displayed on the Parish lamp-posts, telegraph poles etc. in an attempt to ‘clean up’ the villages. Also the dropping of litter has increased over recent months and again the Council would ask that this is put in the bins provided or taken home rather than make the villages an eye sore.

Lin Sargeant – Clerk to Edlesborough Parish Council – Tel: 01525 220859

E-mail: parish.council.clerk@edlesborough.gov.uk Website: www.edlesborough.gov.uk

Edlesborough Memorial Hall Bookings can be made by telephoning Beverly Sage on 01525 229509

Age Concern...

are looking for a driver to help on a Wednesday (about once a month). It is a very rewarding and friendly atmosphere. Please contact John Plater on 01525 221095 if you are interested.

Church Humour

Ladies, don't forget the rummage sale. It's a chance to get rid of those things not worth keeping around the house. Bring your husbands.

HOLIDAY LET

Sheplegh Court

Nr Dartmouth, South Devon

Lovely two bedroomed apartment in country house set in 30 acres of gardens, woods and parkland. Facilities available include:

- Heated outdoor swimming pool with sun terrace and barbecue area (summer only)
- Conservatory overlooking the gardens and parklands
- All weather tennis court.
- Snooker room with full size table
- Small indoor pool, jacuzzi and sauna

Secluded position on outskirts of award winning village yet within 3 miles of beaches and Dartmouth Golf and Country Club. Available for weekly letting or for three plus days out of season.

For further details please telephone 01525 220957 evenings and weekends

HOLIDAY LETS

Villa on Silver Coast Portugal

Located in the coastal village of Foz do Arelho, 50 mins North of Lisbon, our brand new villa is a short walking distance to village centre, beach & lagoon.

- 3 dble bedrooms, 2 en-suite, 1 bath, sleeps 6-8, shared pool with 3 other villas
- Local watersports/sailing centre, horse riding, golf, cultural places of interest
- Direct flights to Lisbon on Easyjet, BMI, BA, TAP
- Peak season £685/wk
- Tel: Robert 01525 378697 Email: silvercoastvilla@ntlworld.com

Anarita Near Paphos Cyprus

Recently built luxury villa. 10 mins from airport and 15 mins from Paphos town.

- Three double /twin bedrooms
- Two bathrooms
- Fully equipped kitchen
- Lounge/diner with sky tv/dvd player
- Air-con in all rooms
- Own pool and garden

Beautifully situated in Anarita village, with 2 tavernas, supermarket and bars

Contact Nicky 07980 735955 or email nicky.corehealth@virgin.net for brochure and details

EATON BRAY VILLAGE HALL

LARGE & SMALL HALL,
MEETING ROOM, STAGE,
KITCHEN, LARGE CAR PARK

SUITABLE FOR ALL KINDS OF
EVENTS:-

- WEDDING RECEPTIONS
- CHILDREN'S PARTIES
- KEEP FIT, BADMINTON
- STAGE PLAYS ETC

TELEPHONE TO BOOK
YOUR EVENT ON:-

01525 222831
07975 797202

KEYS TO BE COLLECTED
BY ARRANGEMENT

Marc Flack

Decorating & General
Maintenance

A friendly, reliable service

Painting & Decorating

Gardening

Any other odd jobs!

Local references available

No job is too small!

10 Wivelsfield, Eaton Bray

01525 223166

Barb Carpets Ltd

Flooring at its very best

---ESTABLISHED 1976---

Domestic & commercial

Samples to Home or Site

Carpets - Vinyls - Floor levelling

Karndean tiles - Carpet tiles

Guild of Master Craftsmen
A flooring company built
on reputation over 30yrs

Call: Dave on 07850 601007

Chris on 07702 601007

Office on 01582 601007

Or find us @

www.barbcarpets.co.uk

ASTON CLINTON INTERIORS

Kitchens, Bedrooms,
Bathrooms & Furniture

All services provided...

- Fitting
- Tiling
- Flooring
- Decorating
- Refurbishment



14 London Road, Aston Clinton,
Bucks Tel: 01442 300695

K. A. Ray Landscapers

Tel: 01525 221037
Mob: 07800 888120

For all of your commercial and domestic landscape requirements.

Professional Landscape maintenance and construction Company.

Qualifications; National Diploma in Horticulture.

As seen on ITV

RHS medal winner

As a company we specialise in:

- Garden design
- Hard landscaping
- Soft landscaping
- Quick impact garden makeovers
- Fencing
- Lawn establishment
- Lawn maintenance
- Hedge cutting

In fact we can create a fully tailor made package for each and every garden.

Contact us on :

01525 221037 k.a.raylandscapers@hotmail.co.uk **07800888120**

Free estimates and advice.

Trevor Yeardye



LUXURY BATHROOMS

**DESIGNING AND INSTALLING
BEAUTIFUL BATHROOMS IN
HERTS, BEDS AND SOUTH BUCKS
FOR OVER 20 YEARS.**

"A Family Business"

Tel - Trevor Yeardye: 01442 890835

Tel - Clifford Yeardye: 01525 220419

*Please visit our website to view our
online portfolio:*

www.trevoryeardye.com

Fresh design & cost effective marketing... it's always a Breez

Small, friendly company with a big reputation for results. We care, listen and learn about our clients and their business goals. Be blown away by positive solutions not costs.

Call 07979 945231 or email
info.breez@btinternet.com

breez
design and artwork





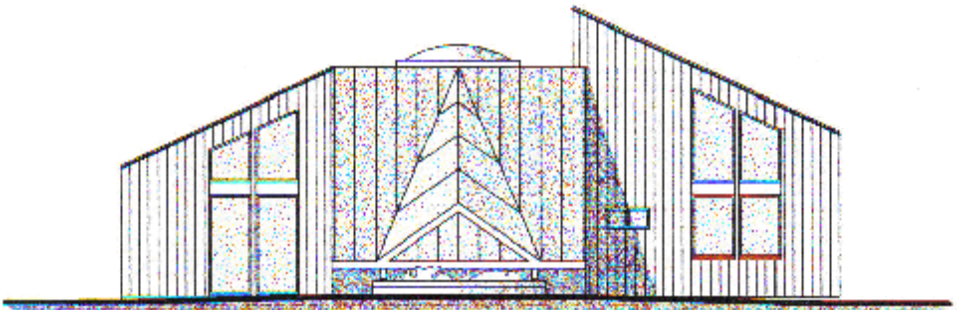
Eaton Bray Lower School

TOP MARKS!

The opening paragraph from the OfSTED inspection report, after their October 2007 visit, said this about EBLs:

"Eaton Bray Lower is an outstanding school. It modestly evaluates itself as good with some outstanding areas, but it is better than this. Its self-evaluation is correct in identifying strengths and areas for development. It provides an outstanding quality of education and care for its pupils and excellent value for money. Staff work exceptionally well in partnership with parents and the community for the benefit of all pupils. Pupils' enjoyment of school is impressive. The supportive parents are delighted with all aspects of its provision. Leadership and management are outstanding. The headteacher's vision for a school at the heart of its community is shared by the highly committed staff and excellent governors. This is set to become more firmly realised with the building of a new nursery with facilities for the local community and visiting professional from children's services."

Please come and visit our friendly village school. Phone 01525 220468 or email eaton@deal.bedfordshire.gov.uk



NOW OPEN: EBLs Nursery with extended School provision and wrap-around care in a modern, light, environmentally-aware building. Please call at the school (01525 220468) to find out more.



Mark Janes Contacts

Felt Roofing - All Roofing Repairs
and Property Maintenance
FREE ESTIMATES



t: 01442 877528

m: 07841 343470

e: mark.janes3@btinternet.com

Established 25 years
**Approved Contractor
for Local Authorities**

CBOS

ARE YOU SELF EMPLOYED
OR RUNNING A BUSINESS?

- Complete
- Book keeping
- Office
- Support



Your one-stop shop for:

- Book keeping
- Payroll
- Sales and purchase ledger
- Management accounts
- Credit control
- Bank reconciliation
- VAT returns

Contact us at:

Wingbury Courtyard, Wingrave Bucks

Tel: 01296 681969

Email: HazelReynolds@btconnect.com

Dominic Woolcott Painter & Decorator



- Internal & External
- Plastering & Coving
- Insurance Work
- 20 Years Experience
- Competitive Rates

For a professional job call:
01525 229682 or 07747 042879

David John Harris



(Established 1992)

All Fencing Work • All Gates
Paving • Patios
Driveways • Shingle
Hedge Setting and Cutting
Grass Cutting
Turfing Specialist
Exterior Painting Service
Sheds
Small Building Work
Trees & Shrubs Supplied

Tel/Fax: 01525 221745
Mobile: 07889 143713

Abbott Flooring

- Carpet & Vinyl
- Laminate & wood flooring
- Domestic & commercial
- Supply, fitting & adaptations
- Next day delivery
- All work guaranteed
- Free no obligation quotes
- No job to small

We provide a friendly, professional service at very competitive prices. If you require us to supply & fit or you just need some flooring fitted then give us a call.

Telephone 01525 220249
Mobile 07958 244536

For all your building needs look no further



BRIGGS



BUILDING & CARPENTRY SERVICES

Established 1981

For a professional, friendly service call:

(01525) 221767

(07970) 214439

Domestic & Commercial

*Extensions
Renovations
Conversions
Alterations*

*New Builds
Roof Repairs
Kitchens
Bathrooms*

*Patios
Driveways
Decking
Garden Walls*

All work Guaranteed

Free Estimates



Edlesborough Cricket Club

Review of 2008

As has been usual in recent seasons, Edlesborough fielded a Saturday League side in Division 2 of the Marrant Four Counties League, a Sunday friendly side, and a Colts team in the Under 15s East section of the Aylesbury & District Midweek League. Unfortunately, however, fewer Sunday games than usual could be played because of difficulties experienced in getting a side out. Although a number of keen youngsters have been coming through from the Colts, retirements among older players meant that the Sunday captain had a constant struggle to get a team together. Looking forward to 2009, it would appear that the problem is likely to become ever more acute and could indeed come to threaten the whole future of village cricket. It remains an on-going puzzle that so few of the young and middle-aged men who must move into Edlesborough to live each year show any inclination to participate in cricket, though many no doubt have at least some background in the game.

The 2008 Saturday League side finished fourth in its division of ten teams, the same position as in 2007, winning seven matches and losing somewhat fewer during a very wet season in which not all fixtures could be played. Having been on the verge of fulfilling his obvious potential for a number of years, Jaco Jacobs finally came good with a vengeance, producing an outstanding season with both bat and ball. Batting in 11 league innings, he scored 546 runs, including two centuries, and was out only five times, giving him an extraordinary average of nearly 110 and making him easily the leading batsman of any team in Division 2, as well as one of its biggest hitters. With his bowling he took 23 wickets at an average of 16 runs per wicket, placing him fourth among Division 2 wicket takers, and overall he was ranked as the leading Division 2 player. Good support on the batting front was provided by both Andy Kight, whose 465 runs at an average of just over 42 made him the Division's second highest scorer, and by Chris Kimpton, whose 113 in an early season home victory over Stewkley was the club's best league score of the year. On the bowling front, Andy Kight performed consistently well and Charlie Dear, only just out of the Colts, deserves special mention for taking a five wicket haul (5 for 30) in the home win over Mentmore.

The Sunday friendly side played only eight games, winning four, losing three and with one abandoned. In the abandoned away match against Bamville, Les Thorne made the season's highest score of 117, and in the later home win against the same side, the Colts player Ali Thorne had the remarkable bowling statistics of 5 for 27. The Colts team had lost a lot of key players from its very successful 2007 side and found the going tougher in 2008, winning two games and losing four to finish fifth out of seven teams in its division. The team's outstanding individual performance of the season was probably by Tom Howard, who took 5 wickets for 25 runs with his leg spin in the home win against Aylesbury.

The 2009 season

Edlesborough Cricket Club welcomes (and very much needs) new members of all standards and abilities for the 2009 season, which begins in late April. Adults (including youths from school year 11 upwards) should contact Ceri Davies (01525-221472), whereas Colts (school years 7-10 only please) should contact Rod Hacking (01525-221710). The club's home ground is on Edlesborough Green, right in the middle of the village, and it would be a real tragedy were cricket to begin to disappear from village life. Robert Prys-Jones

Dagnall Weather Station (AONB)

We have had two seasons during February, the first 14 days “winter” with temperatures dropping to a low of -7.3°C and over the 1st to the 3rd, the temperature stayed below zero degrees continuously for 43 hours. The chart shows rain but most of this is snow, the equipment only measures when the snow melts but I did measure separately a maximum depth of snow of 11cm.

For the second half of the month “spring” arrived where the temperatures reached 7°C every day and in double figures on five days with no rain.

The Dagnall weather station is now live on the web with 15 mins updates from approx 0800-2200 hours each day. <http://myweb.tiscali.co.uk/dagnallweather>.

If anyone has a question, comment or wishes to contact me please email me: davidgkillick@tiscali.co.uk

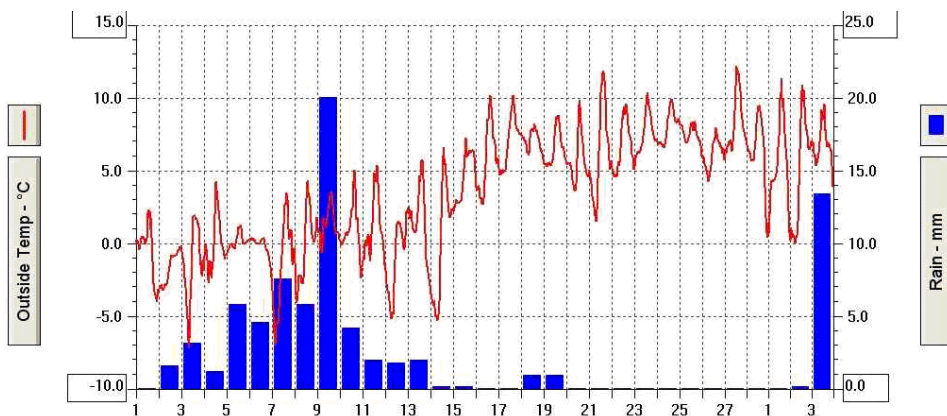


Weather Conditions for February 2009

Elevation: 450 ft – Latitude: 51° 50' 13" North - Longitude: 0° 33' 34" West

	High	Date/Time	Low	Date/Time
Temperature:	12.7°C	27 Feb 12.30	- 7.3°C	3 Feb 07.30
Mean Temperature	3.3°C			
Dewpoint:	8.0°C	17 Feb 15.00	- 8.1°C	3 Feb 07.30
Humidity:	100%	2 Feb 0.30	51%	Feb 14.00
Barometer:	1032.5 hPa	20 Feb 23.00	978.0 hPa	10 Feb 00.00
Wind Speed	33 mph	10 Feb 04.00	Months avg.	4.9 mph
Wind Chill:	11.1 °C	27 Feb 12.30	- 10.4°C	3 Feb 7.30
Dominant Wind:	NW			
<u>Rainfall</u>				
Rain Days: 16	Wettest Day	9 Feb	19.99 mm	0.86 ins
Monthly Rain:	Total	Feb	62.20 mm	2.45 ins
Yearly Rain:	Total	2 Months	132.20 mm	5.21 ins

Temperature and rain for February 2009



Cheeky Monkeys Under Five's Playtime

We continue to welcome lots of new faces to our group.

This has been a very "messy month!" The children have been painting, icing heart shaped biscuits for Valentine's day, making sticky chocolate krispie cakes, and messing about with cornflour and water! We would therefore recommend that you don't send your children in their best clothes.

Due to the success of the group, and requests from parents we have decided to open during the Easter holidays. We would like to clarify the opening time of 1pm, and not 1.30pm as printed in some local newspapers.

We have all been enjoying playdough, puzzles, a farm yard, mega blocks, craft activities, junk modelling and chalk boards. In addition, for the girls we have a home corner with buggies, kitchens, dolls and prams, and for the boys we have a lovely big car mat, trucks and lorries, and a workshop. There is an enclosed baby area with soft toys and a reading corner with cushions and mats. The session also includes time for a drink and biscuit, some singing or storytime, and we end the afternoon at 2.45pm.

Dates for your diary: on April 8th we will be holding an Easter Raffle, with some great chocolate prizes! Raffle tickets will be on sale from April 1st. We will also be making Easter bonnets and decorating Easter baskets (with chocolates!) On April 22nd we will be sowing cress seeds.

On April 29th we will be hosting the annual "Eve Appeal". This campaign supports the research of the Gynaecological Cancer Research Unit. We are hosting this because a friend of Sarah's named Julia was only 38 when she died and last year Sarah raised £400 at home. If we can raise £1,000 we will be able to have a memory plaque for Julia at the research laboratory. We hope you can help make this possible. We will have some delicious cakes and biscuits for sale, as well as key rings and pin badges. Please come along and support this worthwhile cause. We would like to thank all those parents who have donated their toys, and to Eaton Bray Pre-School for the loan of their parachute! In future we would like to have a "dressing up corner" so if anyone has anything suitable that their children no longer use, please give us a call, (contact details below).

If you are a parent or carer and would like to join our friendly group, please come along on a Wednesday afternoon at 1pm, in Eaton Bray Village Hall. Everyone is welcome. We charge £1.50 per adult, £1 per child over 1, and 50p per child under 1. Cheeky Monkeys is run by three volunteer parents, Sarah, 07904 348113, Louise 07784 165259 and Sue 01525 222387. For enquiries please contact anyone of us.



Eaton Bray Village Hall 100 Club Winners February 2009

122	Keith Parrott	£100
10	Helen Steel	£25
96	Mary French	£25
189	Sonia Dean	£25
70	Barbara Collier	£25

Drawn on 25th February 2009 at The Coffee Tavern. Please direct any correspondence to Ross Bagni, 71 Bower Lane, Eaton Bray, Bedfordshire, LU6 1RB, Telephone: 01525 221411.

Salvation Sound...April 2009

What Is Easter ?

A holiday? - a time for celebration? New life- the birth of Spring? Is it a time for solemn reflection on Jesus' death? Or joy because of His resurrection. It is all of these things.--

The name of Easter is derived from the name of an Anglo-Saxon goddess of the dawn. In the early days, bonfires were lit on the tops of hills on Easter Eve to celebrate the arrival of spring. Coloured eggs represent the sunlight of springtime. They are believed to have been introduced into Europe during the Crusades, but through the Lenten season of forty days, no eggs were eaten; so they were very much enjoyed on Easter Sunday. Myths from some ancient cultures state that the universe originated from inside an egg.

The children (and adults) in our days prefer chocolate eggs; along with the Easter bunny and chicks, they are the symbols of new life and fertility. We have family gatherings; eat meals together. We have special foods, the most popular being the hot cross-buns. A new cycle of life is beginning - nature has received the signal, trees and plants dormant through the winter months have now the energy to break forth. Spring, the season of a million miracles is upon us. We too seem to wake up from a kind of hibernation. We begin to be more mobile, we want to tend the garden, or go for a walk. We want to renew our faith at this most important festival of Easter.

The Easter lily is white and the symbol of the Resurrection - the daffodil carries a star at the base of the flower to remind us of the Star of Bethlehem, it carries a trumpet to declare that Christ has risen from the dead; and the long green leaves supporting it represent the Sword of the Spirit.

So Spring is here --'O Lord how excellent is thy name in all the earth' Psalm 8:1, the season when every Christian needs to find a place of renewal. Look into our hearts, deepen and develop ourselves. The cross means many things to many people - to some it is just an ornament to wear around the neck, or attach to a lapel.

To those who love the Lord it is a reminder of that dark day of long ago; the agony that was beyond our comprehension, the horror that surrounded the death of Jesus. It is also a reminder that at the resurrection our Lord left the cross and pointed our way to heaven. He gives us quietness, hope, faith, and peace. So that we know as we grow older we will feel the glow of the love of God warming our very souls.

"Even to your old age I will be the same: when you are grey haired I will sustain you." Isaiah 46 : 4. Moffatt.

The Salvation Army, Booth Place Weekly Activities

Sunday

Sunday School	9.45-10.45am
Morning Service	11.00am
Evening Service	6.00pm

Sunday Evening (1st and 3rd each month)

Youth Group (age 12+)	7.45-9.00pm
-----------------------	-------------

Monday

Junior Club (age 8+)	6.30-7.45pm
----------------------	-------------

Wednesday

Home League (Ladies Meeting)	2.30pm
------------------------------	--------

Thursday

Baby and Toddler Group	9.30-11.30am
------------------------	--------------

Thursday Evening

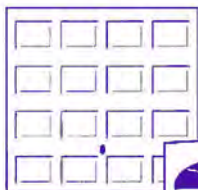
Young Ladies Fellowship	7.45pm
-------------------------	--------

(last Thursday in every month)



Premier Garage Doors

MANUAL & ELECTRIC



Quality Garage Doors

- ✓ SUPERB CHOICE OF DESIGNS IN METAL,
WOOD AND FIBREGLASS
- ✓ ANY SIZE DOOR MADE TO YOUR REQUIREMENTS
- ✓ LARGE SELECTION OF SPARES & FAST REPAIR
SERVICE AVAILABLE
- ✓ NEW OR EXISTING DOORS CONVERTED TO
AUTOMATIC
- ✓ PROFESSIONALLY FITTED BY OWN EXPERT
CRAFTSMEN
- ✓ PROMPT FREE ESTIMATES & ADVICE
- ✓ WE COVER ALL AREAS

- DIY KITS AVAILABLE
- INSURANCE WORK WELCOME
- COUNCIL APPROVED
- REMOTE CONTROL GATES ALSO
AVAILABLE

(EST 1984)

UNIT 7 SPARROW HALL FARM
LEIGHTON ROAD, EDLESBOROUGH LU6 2ES

01525 220212 OR 01494 773391

@janes

GET OUT N ABOUT
ON YOUR BIKE THIS SUMMER

**Pick up a new bike with
all the accessories you
will need from
Janes your local
Bike Specialist**



Or dig out your old
bike from the back of the shed
And drop it down to us

**BIKE SERVICE
& REPAIRS AVAILABLE**

4-8 High Street, Edlesborough, Dunstable, Beds LU6 2HS
5 miles outside of Dunstable

For directions log on to our web site www.janesltd.co.uk
or call us on Tel: 01525 220208