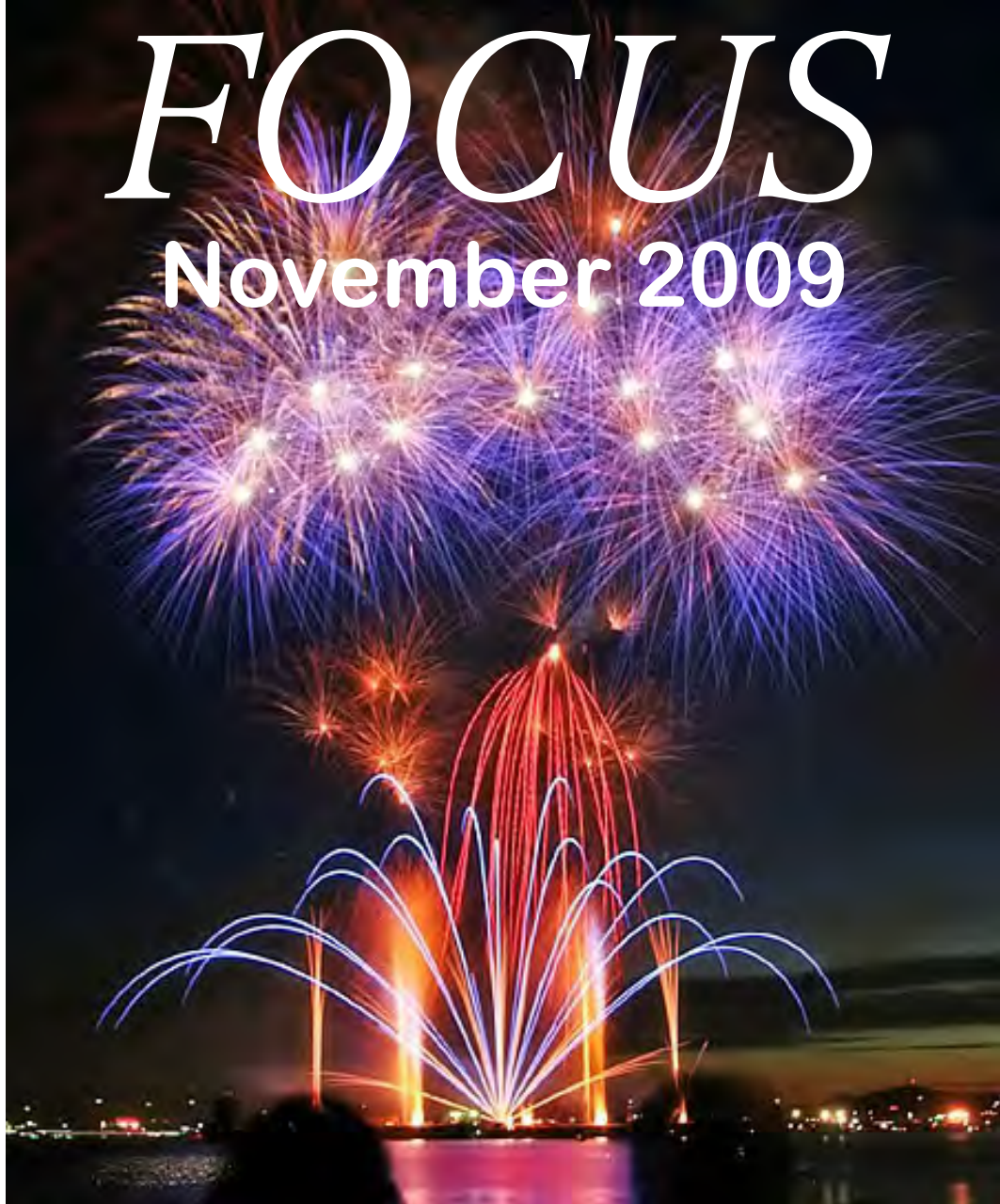


FOCUS

November 2009



THE FOUR VILLAGES MAGAZINE

EATON BRAY

EDLESBOROUGH

NORTHALL

DAGNALL



Christmas Menu 2009



(G) Homemade Cream of Potato Soup with Chives & Parsnip Crisps

(G) Crab Timbale with Smoked Salmon & Dill Crème Fraiche

(G) Shredded Duck with Hoi-Sin Sauce on Salad

(V) Pan-Fried Mushrooms in Garlic Butter & Fresh Herbs



Roast Turkey with Sage & Onion Stuffing

& Chipolata Sausage Wrapped in Bacon

Roast Lamb with a Port Wine & Minted Gravy

(G) Chargrilled Sirloin Steak with Garlic Butter

(G) Slow Roasted Belly of Pork with Black Pudding

on Braised Red Cabbage

(G) Sea Bass Fillet in Lemon Butter on Crushed Potatoes

& Wilted Spinach

(V) (G) Celery Hearts Braised in Red Wine with a Stilton Sauce,

Topped with Chopped Walnuts



Christmas Pudding with Brandy Sauce

Homemade Sticky Toffee Pudding

(G) Chocolate & Orange Mousse

(G) Raspberry & Hazelnut Meringue Roulade

Tiramisu Glacé

Cheese & Biscuits



Coffee & Mince Pies

£26.95 per person

(V) Vegetarian

(G) Gluten-Free

For Booking Details Tel: 01525 220231

www.thewhitehorseatonbray.co.uk

**Focus - The Four Village Magazine
Magazine Committee**

Joint Editors: George Crutcher - 7 Summerleys, Eaton Bray 221637

Email: george.crutcher@tiscali.co.uk

Sally Siddons - 34 Wallace Drive, Eaton Bray 221733

Email: sallysid@hotmail.com

Dagnall Representative: Sue Cawdell - 10 Deans Meadow, Dagnall 01442 842200

Northall Representative: Derrick Bonfield - 'Poppyn', Eaton Bray Road 220013

Circulation Manager: John Plater - 41 Church Lane, Eaton Bray 221095

Treasurer: Ken Coates - 10 The Nurseries, Eaton Bray 220868

Advertising: Sally Siddons - 34 Wallace Drive, Eaton Bray 221733

Production Manager: Tracey Moren (Moren Associates Limited) 01525 229695

Copy for publication to the Editors or one of the following by the **10th of the month:**

Kevin Cabbage - 'Larums', Eaton Bray Road, Northall

Val Barrow - 3 Chestnut Close, Dagnall

Focus accepts no responsibility as to the accuracy or content of any advertising or articles published in 'this' magazine neither do they reflect the opinion of members of the Committee.

© Articles published in Focus may not be reproduced without permission.

December Focus will be a joint issue for December & January. Don't forget to send in your December & January entries by 10th December.

Police Contact Numbers...making neighbourhoods safer together

Bedfordshire Police (Eaton Bray)

General Assistance (Recommended Number) 01234 841212

Leighton Buzzard Police Station/P.C.Viv Dady 01582 473418

P.C. Viv Dady Mobile 07908520148

PCSO Joanne Glenn Mobile 0796 1067867

Typetalk: 18001 01582 437418

Email: SNT.Leighton-Rural@Bedfordshire.pnn.police.uk

Thames Valley Police (Edlesborough, Dagnall & Northall)

0845 8505505

Village Hall Bookings

To book your local village hall for an event please contact the following:

Northall: Lorna Cabbage, Tel: 220361

Eaton Bray: Norman Lee, Tel: 222831

Dagnall: Elizabeth Coates, Tel: 01442 842550

Edlesborough Memorial Hall: Beverly Sage, Tel: 01525 229509

All Saints Dagnall Christmas Coffee Morning

All Saints' Church, Dagnall, Christmas coffee morning, Saturday 5th December, 10.30am - 12.30pm, cake stall, Christmas crafts, Fairtrade stall. Proceeds in aid of the church project for 2009.

Village Diaries November 2009



Weekly

- Mon-Fri (term time) Eaton Bray Pre-school, Eaton Bray Lower School, 01525 220468
- Mon-Fri (term time) Dagnall Under 5's, Dagnall Village Hall, 9.30-12 noon, Mrs Ann Tobin 07816 358342
- Mon-Fri (term time) Edlesborough Under 5's Pre-School, Edlesborough Memorial Hall, Sue 01525 222199
- Mon-Thu (term time) Totternhoe Pre-school, mornings, Totternhoe Memorial Hall, Kay 07956 526635
- Mondays Pilates, 10.45am, St.Giles Church Hall, Totternhoe, Lisa: 01582 412426
- Mondays (term time) 2nd Eaton Bray Brownies, girls 7- 10 years, Edlesborough Memorial Hall, 6 - 7.30pm, Sarah 01525 229194
- Tuesdays Line Dancing, 1.30-3p.m., Eaton Bray Village Hall, Lyn Stubbs 220731
- Tuesdays Baby's First Cafe (Support for Breastfeeding mums), 10.15 - 11.45 am, Pitstone Memorial Hall
- Tuesdays Pilates, 10-11am, Eaton Bray Village Hall, Nicky Roussou 07861 161680
- Tuesdays Totternhoe Baby & Toddler Group, 9.30-11.30am, Totternhoe Village Hall, 07986 730922
- Tuesdays Northall Toddler Group, 9.30am-11.30am (10am-12noon Summer School Holidays Only), Northall Village Hall, Naomi 01525 376575/07977 564449
- Tuesdays Tap & Ballet Classes, JoAnn Latus School of Dance, 4-8pm, Eaton Bray Village Hall, 01582 620576
- Tuesdays Coffee Morning, Bring & Buy, Table Top Sale, 10-12noon, Salvation Army Hall, Booth Place, Eaton Bray
- Fortnightly
- Weds Cheeky Monkeys Under 5's Playtime, 1:00pm - 2:45pm, Eaton Bray Village Hall, Contact Louise on 07784 165259
- (term time)
- Wednesdays Chi Kung & Wu Chi classes, Coffee Tavern 11am - noon
- Wednesdays Pilates, 7.15pm, Northall Village Hall, Lisa: 01582 412426
- Wednesdays Egyptian Dance Class, 7-8.30pm at Eaton Bray Village Hall. Contact: Soraya 01525 853360
- Thurs Baby & Toddlers Group, Dagnall Village Hall, 12:45 - 2:45pm (12:15 if bringing lunch) Contact Michelle Tel 01442 842 676
- (term time)
- Thursdays Yoga, Northall Village Hall, 11.30am-1pm 01525 377542
- Thursdays Keep fit, 2-4pm, Eaton Bray Village Hall, Mrs Johnson 220304
- Thursdays Kfa Body Moves 40+, Fitness through movement, exercise & dance. 8-9pm, Edlesborough School, Pat 01582 668735
- Thursdays Baby & Toddler Group, Salvation Army Hall, Booth Place, Eaton Bray, 9.30-11.30am
- Thursdays Keep Fit Edlesborough School, 8pm Tel: 01582 668735
- Thursdays Jazzercise, 9.30-10.30am, Eaton Bray Village Hall, Angela Veryard, 01525 715208
- Thursdays Karate, 7-9pm, Eaton Bray Village Hall, Brian Bates 07958 348086
- Fridays Tap & Ballet Classes, JoAnn Latus School of Dance, 4-8pm, Eaton Bray Village Hall, 01582 620576
- Saturdays Jazzercise, 9.30-10.30am, Eaton Bray Village Hall, Angela Veryard, 01525 715208

Saturdays Drama Class for Children, 10.35am-12.35pm, Eaton Bray Village Hall, Claire Casey, 07792 508591

Monthly

1st Monday Eaton Bray Parish Council Meeting, 7.30pm, The Coffee Tavern
1st Monday Eaton Bray W.I. Meeting, 7.30pm, Eaton Bray Village Hall, Contact Sheila Beal on 01525 221185
1st & 3rd Tuesday Dunstable & District Orbit Club meet at Dunstable Rugby Club at 8pm. For details contact 01525 222441 or 01582 755147
1st & 3rd Sunday Grace Baptist Church Service, 3pm, all welcome, David Coleman 01582 664990
2nd Tuesday Toddlers' Church, St Mary's, Eaton Bray, 2.00pm
2nd Tuesday Dunstable & District Local History Society meeting, 7.45pm, Methodist Church Hall, Dunstable (opposite Wilkinson)
2nd Tuesday Edlesborough W.I. Meeting, 7.30 pm, Edlesborough Memorial Hall
2nd & 4th Tuesday Grace Baptist Church Bible Study, 7.30pm, all welcome, David Coleman 01582 664990
2nd Wednesday 8.15pm Healing Service in St Mary's Church
2nd Thursday CAMEO Coffee, tea & chat, 10am-12noon, Edlesborough Methodist Church
3rd Thursday Edlesborough Parish Council Meeting, 7.30pm, Memorial Hall
3rd Sunday Lunch club 11.30 to 2.00pm, Eaton Bray Village Hall, Chris Hewitt 222288

Other Regular Events

10th Dagnall Over 60's Village Hall 2pm Rhymes & Reminiscences, Speaker Mrs Parsons. **Note the date.**
11th, 25th Bingo, Dagnall Village Hall 8pm.
13th Leukaemia Research Coffee Morning, 2 Dunstable Road, Dagnall 10.30am

One Off/Annual/Irregular Events

14th Christmas Fayre, 12 - 3pm, Eaton Bray Village Hall
14th Dunstable Downs Rotary Club Charity Quiz Evening, 7.30pm, Edlesborough Memorial Hall, Tickets £9, Malcolm 01525 222711
18th Eaton Bray Men's Group. Talk and Slides on Tottenhoe Village by Jim Knight, 7:45 p.m, Eaton Bray Methodist Church, Entrance £2
21st FODS Christmas Fair, Dagnall Village Hall, 1-3pm
21st Tea Dance, 3-5pm, Eaton Bray Village Hall, Ticket £7.50 Tel: 222726
21st EDaN Youth Games & Quiz for ages 8-13, 4-6pm, at Edlesborough Memorial Hall, £1.50, phone Liz Coates 01442 842550.
26-28th Front Row presents 'AUDACITY', 8pm, Eaton Bray Village Hall, Box Office: 01525 222283

Thank You

Claire & Natalie would like to say a HUGE thank you to everyone who supported our recent 70's,80's,90's DISCO to raise funds for our Cycle China 2010 Challenge. The event was a great success with lots of interesting photo's to tell the tale. We are delighted to say we made a profit of over £2700 ! Thanks to everyone who came and donated time, effort and goods - it was all VERY much appreciated. If you wish to have any more details, please visit www.justgiving.com/claairesmithcyclechina2010 or www.justgiving.com/nataliesunderland

EATON BRAY PARISH COUNCIL

Please come and help to run your village

The Parish Council is nine members of the public

We come to each Parish Council Meeting in the Coffee Tavern on the 1st Monday of each month and spend on average around two hours each month advising and helping to run our village.

At present we have one vacancy – will YOU come and join us?

If yes, please contact:

Mrs Heidi Head, Clerk to Eaton Bray Parish Council
20 Good Intent, Edlesborough, Dunstable, Beds, LU6 2RD
Email: clerk@ebpc.co.uk Telephone: 01525 222601
Website: www.ebpc.co.uk

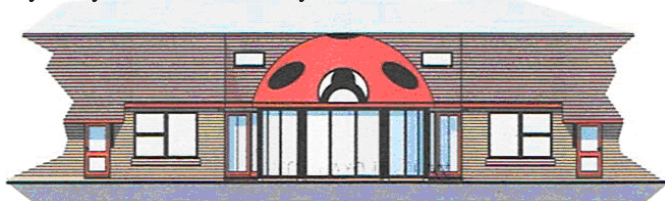


Great Excitement at Eaton Bray Lower School

It is hard to believe that our Pre School has now been open for a year.

I think it is really beginning to feel like home now for the staff and the children. In fact one of our parents said 'it is the closest to home a School can be'. The outside area is being developed, the new furniture is in daily use, the Children's Centre have been running Jo Jingles, Bumps and Babes and Story and Rhyme Time. All is well with the world; it is obviously time for our next project!

Mr Andrew Whiteley, one of our School governors, designed our innovative Pre School building for us. At the opening we could hardly dare to believe that it was really ours. It was a special moment and one, I thought, we could not repeat. However, our pupil numbers have been gradually increasing over the last few years, and then drastically increased when our Pre School arrived. So after much discussion about an extension and where it should go and what it would look like and even more saving, we decided to in-fill between two classrooms which would mean joining the classroom onto the library. Imagine our delight when Mr Whiteley asked if he could once more design a building for us. Nothing, however, prepared us for what was to come. Many people had described our Pre School building as a building to make you smile. It has certainly made everyone attending it very happy. This latest design I think will make us all chuckle. I can already picture the children arriving at School, perhaps a little nervous on their first day; they then raise their eyes and see this -



CSL

Charvet Services Ltd

Plumbing & Heating Engineer

40 years experience/CORGI registered

Full central heating installation, boiler changes, all heating repairs

Landlords Gas safety certificates

*Complete plumbing service - bathroom refurbishments including tiling
and electrical work*

Underground drainage/blocked pipes etc.

Free Quotations • No call out charge • No payment until complete satisfaction

Telephone: 01525 221052 - Mobile: 07721 625887

comput@mation

it support & after-sales services

Services:

After-sales for any PC

IT support

Wired and wireless network installations

Internet & email assistance

Troubleshooting:

Windows troubleshooting

Virus & spyware removal

Fault diagnostics, repairs & upgrades

Sales:

Custom PC's

Computer hardware & peripherals

Software

On-site visits - office hours or evenings by appointment

Computamation Services Ltd

40 Lake Street, Leighton Buzzard, Beds LU7 1RX

Contact John Wallace on Tel: 01525 378939 or Mob: 07968 536068

email: john@computamation.co.uk web: www.computamation.co.uk

Carpet & Upholstery Cleaning

Professional & Local

All work guaranteed - not happy, don't pay

**Powerful equipment means drier much
quicker than other methods**

**100% Guaranteed no chemicals left in carpet
when dry therefore will not easily resoil
& perfectly safe for children & pets**

Recommendations account for 90% of my work

Absolutely no hard sell

Telephone Colin for a Free Quote

DEEP-CLEAN

01525 851 811

www.deep-cleaners.co.uk

Email: colin@deep-cleaners.co.uk

EDLESBOROUGH SURGERY 01525 221630

Cow Lane Edlesborough

**Dr M R Jones, Dr J R Bell,
Dr Stephanie Johnston, Dr Helena Verwey**

We offer a full range of health services at the surgery

EDLESBOROUGH PHARMACY 01525 223181

Pharmacist - Claire Clarke

**Friendly, reliable professional service at the pharmacy
All doctors, dentists and hospital prescriptions dispensed**

Professional advice always available

Herbal/Homeopathic products available

In addition-Disability Aids, e.g. wheelchairs, walking frames

Incontinence Aids, Ostomy Products

Special Orders on Request



Quality Flooring
and Installation
at Affordable Prices

- ◆ Laminate
- ◆ Carpets
- ◆ Real Wood
- ◆ Karndean Vinyl

For a **FREE**, no obligation quote, please contact me, Michael Bishop, on either number and I will be happy to visit you in your home.



Master Fitter

"Excellent service and a beautiful floor expertly installed. I would highly recommend Aspley Flooring" *S.Stillard, Edlesborough.*

"Your workmanship has created a beautiful floor, I shall have no hesitation in recommending you or using your services again" *A Satisfied Customer, Edlesborough.*

t: **01908 587332** m: **07977 575010**
www.aspleyflooring.co.uk

30 Years Experience Domestic & Commercial Security



- Burglar Alarms
- Redcare Monitored Systems
- Intercoms
- CCTV
- Access Systems
- Locks



CERTIFICATE NO. NAC/G/2113

Quality Installations – Competitive Prices
Insurance Approved Free Surveys

AAA SECURITY

01525 378222

Slicketts Lane, Edlesborough, LU6 2JD





YOUR ONE STOP SHOP FOR:

Hot Tubs/ Spas • Swimming Pools
Pool & Spa Chemicals • Splash Pools

AZURE POOLS & HOT TUBS LTD

Leighton Buzzard Garden Centre, Hockliffe Road, Leighton Buzzard.
Tel: 01525 854000 • www.hottubs4u.co.uk • www.azure-pools.co.uk

P. DYER ELECTRICAL

For all your Electrical & Testing & Inspection needs

- Re-wires
- Testing & Inspection
- Security Systems & Lighting
- LED & Low Energy Lighting
- Decorative Lighting
- PAT Testing
- Fuse Boards
- Fault Finding & Repairs

Fully insured, Part P registered, all work guaranteed. Fast, friendly, reliable, local electrician. For a free, no-obligation estimate, call Paul on:



Tel: 01525 222109
Mobile: 07850 682815



UNICORN WINDOWS

FREEPHONE 0800 092 5212

"WHERE QUALITY & SERVICE ARE NOT A MYTH"

Windows

Doors

Conservatories

Guttering

- Internally glazed for high security
- High security locks on all windows, doors and conservatories
- Full 10 year insurance backed guarantee



UNICORN WINDOWS

Unit 3&4 Youngs Industrial Estate, Stanbridge Rd,
Leighton Buzzard, Bedfordshire LU7 4QB

FREEPHONE 0800 092 5212

www.unicornwindows.co.uk



FENSA



EDLESBOROUGH
TENNIS CLUB

Website by [Jupiterwill](#)

www.etctennis.org

Play tennis Have fun Socialise Feel good Join our club

Join via the website, or call Iona McLean-Hall on 01525 220562 for details

‘Beautifying’ Edlesborough Pavilion?

Edlesborough Parish Council (EPC) owns and operates the Pavilion which is situated on Edlesborough Green, near the tennis courts. The Pavilion is used by football and cricket teams, the Edlesborough Tennis Club and for one or two other activities such as on Carnival Day.

Unfortunately, EPC has to spend a lot of Council Tax payers’ money in continually having to remove graffiti from the exterior walls of the Pavilion, replacing gutters and repairing damage to the roof. Some of this damage is caused by children and youths using the building as a “kick wall”. When not in use, all the windows are protected by heavy steel shutters. Consequently, the Pavilion is somewhat of an ugly building and not befit of The Green’s role as Edlesborough’s ‘jewel in the crown’.



EPC is therefore considering two ideas to improve this situation.

Firstly, we are investigating the provision of a purpose designed kick wall, which we believe would be welcomed by children and youths, and which would be located somewhere appropriate on The Green. We will publish our specific proposals in ‘Focus’ in due course, and on www.edlesborough.gov.uk and will, of course, then welcome comments from all parishioners.

Secondly, we are considering whether to replace the ugly steel shutters with some ornate metal grilles. This may also involve replacing the ordinary window glass with an unbreakable/laminated specification.

But should we also be considering whether we can financially justify the continuing operation of the Pavilion?

EPC would very much welcome parishioners’ comments on the above, and any other suggestions for helping to ‘beautify’ Edlesborough Pavilion. Please let the Clerk have these by Monday 30th November 2009 so that they can be fully considered at its next meeting.

Lin Sargeant, Clerk to Edlesborough Parish Council.
parish.council.clerk@edlesborough.gov.uk Tel: 01525 220859

Edlesborough Tennis Club - Finals Day 2009

September proves to be a good month to stage the Edlesborough Tennis Club Finals. It ensures that everybody has returned from their summer holiday and the kids are back at school which means the sun will always shine! True to form, the 12th was a fabulous day. The only disappointment was that, a few days earlier, we learnt that the LTA officials who we had booked back in May were not going to arrive. However, in true club spirit, volunteer umpires saved the day! It was especially good to see our younger members officiating as well - all for the reward of a blueberry muffin!

Once again we had the juniors playing their finals alongside the adults and the standard of tennis was brilliant in both categories. Head coach and defending champion, Leon Leenders was successful again this year beating James Kight in a repeat of last year's men's singles final, this was an excellent display of shot-making at its best with Leon just having the better game plan. The men's doubles had to be the match of the day. Last year's champions Ziggy Bis and Bruce Thomson won the first set in great style but after a fiercely competitive second set, the younger team of James Kight and Rhys Dalkin ran away with the third, reversing the result of 2008.

All junior matches were played in a wonderful sporting manner. For the first time this year we had 3 mini tennis finals – Morgan Emmett took the honours in the Mini Red while Harrison Ambrose, in both the Mini Orange and Mini Green, came back from behind in two very closely-contested matches to take both. Well done to Anna Henderson who was competing in four finals and also found the time to umpire the mini orange match! A special thank you to Carolyn Kight, our junior co-ordinator, who made sure all the junior matches were through to the finals in time and in some cases even umpired them herself to ensure that they were played. A delicious ploughman's lunch was enjoyed by players and spectators while the BBQ and presentation of trophies took place in the evening. Many thanks to everybody who helped make it a very successful day. Congratulations to all our winners and runners-up.

Results In Full:

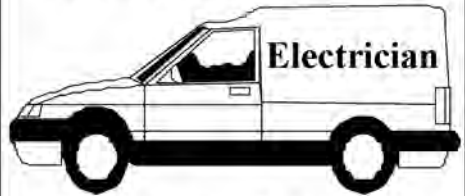
Mens Singles:	Leon Leenders	bt	James Kight	6-2 6-1
Mens Doubles:	Rhys Dalkin & James Kight	bt	Ziggy Bis & Bruce Thomson	2-6 7-5 6-2
Ladies Singles:	Kimberly Squire	bt	Anna Henderson	6-0 6-0
Ladies Doubles:	Margaret Bis & Kim Squire	bt	Jackie Hodson & Hilary McCloskey	6-2 6-1
Mixed Doubles	Ziggy Bis & Margaret Bis	bt	James Kight & Abigail Kight	6-1 7-5
Vet. Singles	Bruce Thomson	bt	David Kight	6-2 6-3
U16 Boys	Jack Coates	bt	Will Sanders	6-2 7-5
U16 Girls	Abigail Kight	bt	Tamzin Mead	6-1 6-1
U16 Mixed	Alex Nilsen & Abigail Kight	bt	Tom Henderson & Anna Henderson	6-3 7-5
U14 Boys	Will Sanders	bt	Scott Mercer	6-1 6-2
U14 Girls	Anna Henderson	bt	Hannah McCloskey	6-2 6-0
U12 Boys	Kyle Suter	bt	Huw Dalkin	6-0 6-0
U12 Girls	Anna Henderson	bt	Holly Ellis	6-3 6-0
Mini Green	Harrison Ambrose	bt	Georgia Rigby	1-4 4-2 4-1
Mini Orange	Harrison Ambrose	bt	Karl Shrowder	2-7 7-5 7-4
Mini Red	Morgan Emmett	bt	Alex Piddington	10-7



M.J. BROUGHTON
QUALITY DECORATING
Interior and Exterior
 ALL WORK CARRIED OUT TO THE HIGHEST STANDARD
 For a free estimate with no obligation ring
01525 - 222764
 8 SUMMERLEYS, EDLESBOROUGH.

P.J. BRINKLOW

Electrical Contractor



**Most types of electrical
 work undertaken**

Tel; 01525 220469

Mob; 07860 781330

**43, Pebblemoor,
 Edlesborough**

Janes

Carpets and Flooring



We carry a wide range of
 Weaves, Twists & Natural Carpets Vinyl & Quick Step Laminate
 KARNDEN The warm alternative to WOOD & CERAMIC TILES

AFFORDABLE & COMPETITIVE PRICES
NO DEPOSIT
INVOICE ON COMPLETION
SAMPLE TAKE AWAY SERVICE

We are happy to visit you at your home For a **FREE** no obligation quote.

High Street Edlesborough Nr Dunstable Beds. LU6 2HS Tel: 01525 220208 www.janesltd.co.uk

CHARTERED ACCOUNTANT



01525 221676

**OPEN 7 DAYS / EVENINGS
FRIENDLY LOCAL SERVICE
VERY COMPETITIVE FEES**

MIKE SUTCLIFFE, MBE

Please visit my website
www.mikesutcliffe.com

213 CASTLE HILL ROAD, TOTTERNHOE, BEDS, LU6 2DA

Stretch your child's imagination in three directions at once.

HERE'S a way to spend weekends that'll have 4-16 year olds buzzing. Enrol them in Leighton Buzzard's Stagecoach Theatre Arts School where for three hours they learn to act, sing and dance.

The skills they learn aren't just for the stage. They grow in confidence, self-reliance and self-esteem. Stagecoach training is for life. You'll see new sides to your youngsters you'll want to applaud.

There's no interview, they take no audition. Enthusiasm is all they need. For a Prospectus, call Wendy Ashman at Stagecoach Leighton Buzzard on 01525 222715.

www.stagecoach.co.uk/leightonbuzzard



STAGECOACH
THEATRE ARTS SCHOOLS

WWW.STAGECOACH.CO.UK



Patricia's Cuisine

Catering For All Occasions

- Buffets, Dinners •
- Christenings, Weddings, Funerals •
- Promotions & Business Lunches •

For Enquiries & Menu

Meadside Farm, 104 High Street,
Eaton Bray, Bedfordshire, LU6 2DP

Telephone: 01525 222174

BARRY CATO

MOTOR REPAIRS

*Servicing, repairs and
MOT's arranged*

Workshop at:

r/o Norfolk House Farm, Harling Road
Eaton Bray, Dunstable, Beds, LU6 1QY

Tel: 01525 221681 (workshop)

07836 650015 (mobile)



Domestic & Commercial Cleaning Service

- Fully Insured
- Family Business
- Free Quotes
- References Available
- Window Cleaning
- Rental Cleans

- Carpet Cleaning
- 2 Bed Home = £60
- 3 Bed Home = £75
- 4 Bed Home = £85

Tel: 01296 748960

Mob: 07909 934168 / 07796 406717



BRIAN'S SCHOOL OF MOTORING

grade 5 driving instructor
pass plus registered
excellent pass rate
block booking discounts

Tel: 01582 535689

Mobile: 07958 348086

Email: bbates.1@ntlworld.com

www.briansschoolofmotoring.org.uk



Blockpaving, Patio Specialists and
Groundwork undertaken

Telephone 01582 704495

Mobile 07958 717248

Free Quotations

EDP

EDLESBOROUGH DENTAL PRACTICE



- Cosmetic Dentistry
- Tooth Whitening
- Dental Implants
- Wrinkle Correction Therapy

11 cowlane | Edlesborough | Dunstable | Bedfordshire | LU6 2HT

t: 01525223175

w: www.edlesboroughdentist.co.uk



High Street Hair

66 High Street
Eaton Bray
Nr Dunstable Beds

01525~221252

Specialising in advanced colouring, cutting and styling techniques. Professional, friendly and affordable service for the whole family.


a new religion for hair



GATES

Plumbing & Heating Ltd

Specialising in all types of
Plumbing, Gas & Oil Heating

We now offer **Solar Heating** as part of our portfolio, please contact us for a free estimate

Tel: 01296 670445

Email: plumbing@gates100a.fsnet.co.uk

CORGI & OFTEC registered

Wills, Probate & Lasting Powers of Attorney



Tony Duke, Sovereign's highly experienced Regional Director, will ensure your Will matches your specific requirements.

HOME VISIT

YOUR PRIORITIES? YOUR REQUIREMENTS?

- avoid Inheritance Tax
- minimum future long term care fees
- the best provision for children
- protect home from an enforced sale

You receive a very personal IN-HOME service, benefit from the fullest legal protection, and have your documents prepared by solicitors who specialise in Family Law.

Fees are very competitive including **discounts on Family Estate and Care Packages**.

CALL TONY ON:

01525 220644

for a daytime or evening appointment in your home.

Provider of **solicitors'**
IN-HOME Will writing
services locally and
throughout the UK



EST 1995

PINSTRIPES

SPECIALISTS IN SIGNS & GRAPHICS

- CAR BIKE VAN & TAXI GRAPHICS
- LORRIES & HORSEBOX GRAPHICS
- WHEELCOVERS
- VEHICLE MAGNETICS
- ONE WAY VISION SIGNS FOR WINDOWS
- VINYL CUT LETTERING & LOGOS
- A BOARDS & PROJECTING SIGNS
- BUILDERS BOARDS
- SHOP SIGNS
- WINDOW GRAPHICS & FROSTING
- FULL COLOUR DIGITAL PRINTING
- STICKERS POSTERS CANVAS' & PHOTOS
- SAFETY SIGNS VARIOUS LABELS & BADGES
- BANNERS BUNTING FLAGS
- ENGRAVED SIGNS & DOOR PLAQUES
- ACRYLIC PERSPEX & METAL 3D LETTERING
- BUSINESS CARDS LETTERHEADS FLYERS
- T SHIRT PRINTING

01525 220485

07973 167779

THEPINSTER@HOTMAIL.COM

WWW.PINSTRIPES-SIGNS.CO.UK



We come to you
... you paint ... we glaze and fire ... and
return to you one week later!

Crockadoodledoo
Original ceramics... painted by YOU!

Call Jane Blumsom on

07736 237 475

www.crockadoodledoo.co.uk info@crockadoodledoo.co.uk

Curtains 4 u

Jan Robinson

Phone/Fax: 01442 843454

Mobile: 0777 9029140



**Curtains with a
certain Flair**

Very competitive rates for
all your soft furnishing needs.
Hand finished curtains a speciality
Alterations and own fabric work undertaken

in good spirits mobile bars

tel/fax: 01525 220443

mob: 07702 712856

ellie@ingoodspirits.co.uk

www.ingoodspirits.co.uk

HALL FOR HIRE

• Bar & Kitchen

• Discount for Villagers

• Membership Available

EATON BRAY

SPORTS & SOCIAL CLUB

For Details phone:

07709 725803



Your Village Estate Agents

Independently owned and established for over 35 years, fully staffed by experienced mature and professional people giving an expert and friendly service.

Call Tony Denson, Hilary Tootell, Hilary B or Julia now

MOVE WITH THE NAME YOU CAN TRUST

65 Moor End
Eaton Bray
LU6 2HN
Opposite the Edlesborough Post Office

Tel: 01525 221313

www.densons.co.uk



The three **aa**gahs Reading, writing and arithmetic.

Even the most angelic children need a solid foundation in maths and English.

Kumon programmes:

- work at a pace tailored to your child's needs
- give their confidence a real boost
- develop invaluable study habits and concentration

Contact your local Instructor today.

DUNSTABLE study centre
Christina Wade • 01525 222 505
dunstable@kumoncentre.co.uk

kumon.co.uk

KUMON
50TH ANNIVERSARY

All Plumbing Repairs and Installations

Domestic & Commercial

- Dripping taps
- Sinks
- Overflows
- Boiler Changes
- Cylinders & Tanks
- Immersion heaters
- Showers & Bathrooms etc
- Leaks, Bursts & Blockages
- Insurance work undertaken



City and Guilds
CGG Qualified Engineer



No call-out charge, free estimates

D. NICHOLSON PLUMBER

01525 872335

Mobile: 07976 975604

Eaton Bray with Edlesborough Parish News

Vicar: The Reverend Roger Chapman, The Vicarage, 11 High Street, Eaton Bray - Tel: 01525 220261. Churchwardens: Chris Banks (221556) and Peter Bennett (221284)

As I type this, my initial thoughts are; 1) how can one small family corner the market in packing boxes, 2) where IS that electric screwdriver set, and 3) I'm sure we remembered to bring the menagerie, didn't we?

In our experience, moving is dizzying, all the familiar touchstones are not yet here, and even connecting the phone can seem a herculean task! But the dust is settling! We actually enjoy all the creativity that goes with making a new home.

We do want to take this opportunity to thank all those who have given of their time and skills to help prepare the house for our arrival.

After the fruitcake incident in Letchworth (announcing that I loved it) and putting a stone on in six months, please feel free to stop me as I cycle around the parish and say hello.

Looking forward to getting to know you.

Roger Chapman

A Vote of Thanks

The PCC and everyone involved with St Mary's Church Eaton Bray would like to thank Angela Giakovnis and her team of decorators from the South & West Herts. Probation Centre at Watford for their help in redecorating the Vicarage in advance of the arrival of Roger & Gill Chapman. Without them the task would have been a major headache, with them we were able to deliver a really good looking job in record time.

Chris Banks & Peter Bennett
Churchwardens

Services at St Mary's Church

SUNDAYS : **8.00am** – The Eucharist
 10.00am – PARISH SUNG EUCHARIST (with Sunday School)

On Third Sunday of each month:

10.00am – WORSHIP FOR EVERYONE a shorter, less formal service (Those who wish to attend a Communion Service on that Sunday are reminded that there is a Family Communion at 10.30am at All Saints', Dagnall, where they are assured of a warm welcome.)

WEEK-DAYS :

Tuesday: **2.00pm** (2nd Tuesday) – Toddlers' Church
Wednesday: **10.00am** – Eucharist

EVERYONE WELCOME AT THESE SERVICES

Macmillan Coffee Morning

Sept 25th Dagnall

Chris and Sue would like to thank everyone who helped them raise £240.

Dagnall School

A Poem for Harvest

Autumn is.....

Busy farmers ploughing
Colourful leaves floating
Juicy berries dripping
Dangerous bonfires crackling
Firework sparks shooting
Shiny conkers dropping
Silvery cobwebs glistening
Crunchy apples ripening
Fat pumpkins growing
Dark shadows dancing
Yellow moon glowing
Shhhh...winter is coming
A whole class Poem for Harvest
By the children in Year 2

St. Mary's Parish, Dunstable

82 West Street, Dunstable, LU6 1NY

Mass Times Christmas 2009

Christmas Eve

11.30pm Carols followed by
Midnight Mass

Christmas Day

8.30am Mass
10.30am Mass

**For further information ring:
01582 662710**

Michael Todd

(ex Hope and Anchor)

Ann and family would like to thank kind neighbours, friends and past customers for the very many cards and flowers received after the sad loss of Mick. Thank you also for the donations to the Pasque Hospice.



Edlesborough School

Harvest Poem by Natalia Moren (Year 2)

Juicy red apples on the trees.
Big fat black berries on the bushes.
Long orange carrots under the ground.
Crunchy green cabbages in the fields.

Sylvia Sharpe

Julia, Graham & family would like to thank carers who attended to Sylvia whilst at Knights Close, also all staff & carers at Greenacres Residential Care Home.

Special thanks go to all friends for their support, kindness, cards and messages of sympathy at this sad time.

Thank you to Revd. John Heffer for conducting the funeral service.

Eaton Bray Men's Group Talk and Slides on Tottenham Village

**by Jim Knight
18th November**

7:45 p.m

Eaton Bray Methodist Church

Entrance £2

to cover refreshments and
a donation to the Pasque hospice

Mary Christina French

George and family would like to thank everyone for their kindness and support following the untimely passing of Mary.

Also many thanks to those who donated so generously to the British Heart Foundation.

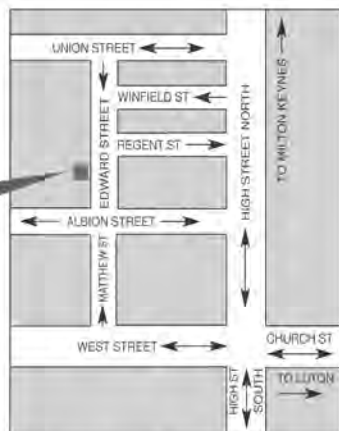
Dunstable LAMINATES

email or fax your requirements
for a free quote or why not
take advantage of our free
home measuring service

cutting and edging service
available

why not visit our show room -
you'll be amazed at the choice

we are here



47 Edward Street, Dunstable,
Bedfordshire LU6 1HE
Tel: 01582 668973 Fax: 01582 608227
Email: sales@dunstablelaminates.co.uk
Web: www.dunstablelaminates.co.uk

THE WORKTOP specialist



James B Chadburn MBHI Fine Antique clocks & Barometers

Specialist in repairs &
restorations.

Valuations & clock
finding service.

Advice & assistance on
formation & disposal of
private clock collections.

Quality clocks/barometers
Bought & sold.



Telephone 01525 221165

Mobile 07790 000629

E-mail: jbchadburn@lineone.net



Café masala

Exquisite Indian Cuisine

We Cater for Office or Private Parties and don't
forget to try our Sunday Buffet

10% Discount on all Takeaway Orders Over £12

Fully Licensed & Air Conditioned

Open Seven Days a Week

Hours: 12 Noon to 2.30pm & 6.00pm to 11.30pm

Tel: 01525 22 22 64

63 Bower Lane · Eaton Bray · Dunstable · Beds · LU6 1RB
email: taraque@hotmail.co.uk · www.cafemasala.com

WASHING MACHINE REPAIRS

ALSO
DISHWASHERS, TUMBLE DRIERS,
AND ELECTRIC COOKERS



Call
ANDERSON D.R.S.

01582 665764

www.andersondrs.co.uk
SALES AND RENTALS AVAILABLE

Buy Direct From Our
Own Farm

Master Card

VISA

From **Ivinghoe Turf**

- Commercial & Domestic
- Small Orders Welcome
- Bark, Grass Seed & Fertiliser
- Laying Service
- Discount on Larger Orders
- Screened & Blended Topsoil
- All Year Availability
- Forklift Delivery Available



ROLAWN®
Approved Rolawn
Stockist

Family firm farming since 1949

ALL AREAS

Freephone :

0800 043 5061

www.ivinghoeturf.com

The Bungalow, Vicarage Farm, Ivinghoe, Leighton Buzzard

AARON FENCING

ALL TYPES OF DOMESTIC & COMMERCIAL
FENCING & DECKING WORK UNDERTAKEN

- FREE ESTIMATES
- FULLY QUALIFIED & INSURED
- PERSONAL SERVICE AT COMPETITIVE PRICES

TEL: 01582 665779

MOBILE: 07798 927272

7 STATION ROAD, DUNSTABLE, LU5 4HS

ARC Contract Services Ltd

- Wallpapering and painting
- Laminate Flooring • Coving
- Tiling • Bathroom installations

Quality work at affordable prices
Insurance work undertaken
All work guaranteed for 5 years
Public liability insurance cover



FOR FREE PROFESSIONAL QUOTATION

CONTACT ADRIAN ON: **01582 539179** or
07789 730580

Garden Care

30 years experience

Traditional Garden Maintenance
and Landscape Services

Free Estimates & Advice

Telephone: **01582 704867**

Mobile: **07830 286837**

cardio strength stretch



MON 7.45pm Brewers Hill Sch
WED 7.45pm Queensbury Sch
THU & SAT 9.30am St Mary's
Eaton Bray Village Hall
THU 7.30pm Leagrave Primary
Tel: Angela **01525 715208**

jazzercise® **FREE CLASS
WITH THIS AD**

Gas Boiler Servicing

Over 30 years experience

Have your boiler serviced by a
CORGI registered engineer from £60

Other services available:

Maintenance, repair and installation of all domestic
gas appliances, including L.P.G.

Boiler installations, landlord safety certificates,
power flushing, pre-purchase surveys and plumbing.

Free Quotes, no call out fee, and free
friendly advice on all of the above

**Edwards Gas &
Heating Services
Eaton Bray**

Tel 01525 220626

Email:

stevethegas@orange.net

*TMS Chauffeur
Services*

Luton	£20.00
Heathrow T1,2,3	£50.00
Heathrow T4,5	£55.00
Gatwick	£75.00
Stansted	£65.00

**London, Theatres, Stations,
Ports. Distance no object.**

**For a professional reliable
service call:**

01582 667710

**Will Kimberley
Garden Services**

01442 255784

**Phone for a free no obligation
written estimate.**

Fiona@wkgardenservices.co.uk

- High hedges a speciality
- Overgrown gardens cleared
- Fences erected and repaired
- Tree Lopping
- Fruit tree pruning
- Shrub trimming
- General garden tidy up's
- In fact any job in the garden!

Stephen Brewer FCCA

offers a friendly and personalised
comprehensive service covering:

Accountancy - Taxation

- Self Assessment -

for

- Individuals -

- Partnerships -

- Limited Companies -

Advice from a qualified professional
at an affordable fee

For a free initial consultation at
your home or workplace, phone:

01234 290333 or 07810 526286

Bayler Wood Associates Ltd
Chartered Certified Accountants

DELLS

UPVC WINDOWS
CONSERVATORIES
FACIAS and SOFITS

**RING ANDY - 01442 826359
MOBILE - 0795 738 6239**

FREE ADVICE • QUOTATIONS

**TV VIDEO
AUDIO
REPAIRS**

**BOB SMITH
EATON BRAY 221722
ALL WORK GUARANTEED
FREE ESTIMATES**

A warm welcome awaits you at The Village Swan



- * Enjoy Real Ale and Fine Wines *
- * Excellent Homemade Dishes *
- * Traditional English Lunch & Evening Menu *
- * Fish & Chip Night - Thursdays - eat in or take away
- * SUNDAY ROAST 12:00 until early evening *

BOOK TO AVOID DISAPPOINTMENT

Quiz Night 1st Monday of each month
Safe Beer Garden * Theme Nights

Bookings now being taken for Christmas

The Village Swan, Ivinghoe Aston, LU7 9DP

For more details of current events:

Tel: 01525 220544 or

Email: TheVillage.Swan@virgin.net for our current menu or
to be added to our emailing list or pop in and see us



Naturally

Relaxed

Photography

Ian is rapidly becoming one of the countries most sought after photographers. He is recommended by some of the local top hotels including The Grove and Hanbury Manor. Ian specialises in wedding and portrait photography with years of experience in capturing people's special moments. He is a qualified member of the Master Photographers Association and the Society of Wedding and Portrait Photographers.

Ian Waldron
naturally relaxed photography

www.ianwaldronphotography.com
0845 225 1771

Your Village Photographer
Based at Sparrow Hall Farm - Edlesborough



Edlesborough Under 5's

Monday - Friday 9.25 am - 12.00 noon

Tuesday & Thursday 12.45 pm - 3.15 pm

"The quality of teaching and learning is good. Children are actively involved in their learning, play independently and are assisted by staff to develop their confidence." "Group times at all sessions were very positive experiences for all the children and enjoyed by all present." "Children of all ages have the opportunity to develop their skills in all areas, supported by a dedicated staff team." "Children are encouraged to make choices and decisions throughout the day, supported by a staff team that know them well."

These are just a few of the comments made in our fifth OFSTED Report (March 2008 - available via our website). The report reflects the high quality of learning on offer to all children at Edlesborough Under 5's and highlighted the quality of teaching by the staff. We are currently operating a waiting list for 2½ to 4½ year olds. If you would like to pop in for a look around, please phone Tracey on 07854 939226 between 9am - 12 noon, to arrange an appointment. A warm welcome awaits you.

**For registration details or to place your child on the waiting list,
please phone Sue Pickering: Tel - 01525 222199.**

"We are an Equal Opportunities Employer" www.edlesboroughunder5s.org.uk



Some comments from our recent Ofsted report (Jan 09):

Children are consistently offered a stimulating range of activities and opportunities which enable them to make good progress towards the Early Learning Goals.

Staff have a good understanding of creating a safe and welcoming environment . . .

Staff support children well and encourage them to be active in their learning and to think critically.

We are a committee run playgroup operating five mornings a week 9:30 – 12:00 for children aged 2½ to school age.

**If you would like to find out if your child would be happy here,
please phone our Playgroup Leader, Ann Tobin on 07816 358 342.**

Dagnall News

Over 60's

A carvery lunch at The Cock in Wing was the popular venue for our September meeting, which was enjoyed by the members as on previous visits.

October sees our traditional Sausage & Mash lunch, followed by Apple Pie & cream. In November we have a speaker, Mrs Parsons, on the subject of 'Rhymes and Reminiscences'. Please note the date is Nov 10th.

Dagnall Church

All Saints' Church, Dagnall, Christmas coffee morning, Saturday 6 December, 10.30am - 12.30pm, cake stall, Christmas crafts, Fairtrade stall. Proceeds in aid of the church project for 2009.

Friends of Dagnall School

Christmas Fair on Sat 21st November at Dagnall Village Hall, 1 – 3pm. All profits to go to Dagnall School and Dagnall Under Fives.

Dagnall Under Fives

Well done to the Children from Dagnall Under Fives who have helped look after their own allotment this year, we have enjoyed a bumper crop of potatoes, squashes, beans and courgettes and have cooked potato wedges and vegetable soup using all our own produce.



Eaton Bray Lawn Tennis Club



You would have thought that with the onset of the darker evenings, the colder afternoons and the ever-increasing risk of aquatic chaos, winter blizzards, snowdrifts and subsequent general mayhem, our on-court tennis activities would have begun to slow down, in preparation for that much anticipated hibernation period. That period where the tennis racquets are lobbed into the attic to gather cobwebs until the first rays of spring sunshine peep through the curtains, usually around April, to entice us less devoted players back out onto the courts so that we can play wearing less than six layers of clothing. But no! This year things are different; and as I pen this, one dreary Sunday morning in mid October, there are no less than 24 members due on court to take part in the first leg of our new Winter League Ladder. The brainchild of committee member Glenn Wigley (although we all think he used his computer), the competition runs over a six-month period playing once a month, with players competing against one another in groups, to move up the 'ladder'. At the end of

March there will be a declared winner who will be the proud recipient of the 'Mike Venn Trophy', named in remembrance of Mike, late husband and doubles partner of club founder member Judy Venn – still a regular player and a mixed doubles finalist this year!

Thus at EBLTC, tennis stays as a true year-round sport, and despite my protestations even I might have to relent and drag myself down to the courts one bleak midwinter Sunday morning in an attempt to move my peg a few places higher up the ladder. I'm also going to suggest a ladder for barbecues, but no-one else will be allowed to join, therefore I can't fail to finish top. Or bottom thinking about it...

As 'Focus' goes to press tomorrow, I can just squeeze in a report on last night's Quiz at the village hall, jointly organised by the village hall and tennis club committees. No less than 172 people battled in teams with names such as the 'Eggheads' and 'Braindrain' to answer questions on everything from atomic atmospheric elements to football players. At this point I wish it to be known that I said 'Argon' but no-body believed me. And no, that's not the footballer. I wasn't the only one – no-one believed Jane Wigley's 'Tufted Puffin' either, but somehow our team still came second to the 'Magnificent Seven' who took home a magnificent seven bottles of quality wine (or so the notice said in Aldi). 'Mary's Ladies', now re-named and down to seven following the sad passing of Mary French, took their usual 'consolation' prize of seven boxes of fine chocolate; I'm convinced those ladies are actually mega-intelligent with IQs to match that of Stephen Hawking, but use that intellect to purposely come up with all the wrong answers and come last, to purposely win the chocolates every time. Seems to work though, but beware ladies, I've seen through your crafty plan and next time my team plans to answer the question before last, just like the Two Ronnies did in 'Mastermind'. That way we'll have all the right answers, but not necessarily in the right order, and get to take home the chocolates. I'll keep that quiet until the next quiz though.

The change of usual comper to yours truly, was forced upon the unsuspecting audience by Ross Bagni's long planned holiday to Scotland with equally long suffering wife Shelagh. The holiday itself was briefer than planned, as whilst unloading their car, poor Shelagh took a tumble and managed to break her femur which has resulted in a fairly long enforced hospital stay there. Our thoughts are with Shelagh for as speedy a rehabilitation as possible; Ross has promised to encase her in bubble-wrap for her next outing. That said, we still managed to make a total profit of £1,300 to be split between the village hall and the tennis club; £431 of which was from the superbly supported raffle alone. Huge thanks go to Katrina Hurley and her team of helpers, Keith Blackburn our quizmaster extraordinaire, ably assisted/hindered by Glenn Wigley, EBLTC Chairman Bernadette Hillman, and everyone involved for making this such a successful evening. Put the next one in your diaries now – Saturday 24th April 2010 and book early!

For any further information about the club, including when we get together for our social tennis sessions up at the School Lane courts, or our various activities, you can visit our website at www.ebltc.org.uk; Alternatively please call Chairman Bernadette Hillman on 01525 222531, Coach Nick Boys on 07810 832774, or if they're all out and I'm not falling off the bottom of my ladder, me, Andy Cross on 01582 477114.



News from 1st Eaton Bray and Edlesborough Scout Group (Beavers, Cubs and Scouts)

The cubs and Scouts had a fantastic time at their summer camp held in Sherwood Forest with activities including **Archery** (naturally), **Quad Biking**, **Climbing**, **Abseiling** and **Kayaking**. The highlight of the camp was the Medieval Joust and pig roast, which ended up more like 'It's a knockout' with Paul, Simon and Nick dressing up as camp Robin Hood, Friar Tuck and the Evil Sheriff of Nottingham (as mentioned in last months issue)

With the new term well under way Beavers have had fun on the Green putting up tents and having an evening picnic and sing along.

The Beavers have earned the first stage of their **Emergency Aid** Badge, whilst also enjoying themselves, acting out emergency situations and applying copious amounts of bandages. We have also enjoyed a night of **campfire songs**. This term we have invested six new Beavers into the colony and are delighted to welcome two more girls to our number.

We also have lots to look forward to, with a visit to the Serpentarium and a fun swim arranged for later in the term. We are also expecting a visit from the local police officer (so best behaviour Beavers!)

The Scouts have been **gliding** and both Cubs & Scouts have been on **bike hikes and night hikes**. The Scouts have also completed their fire safety badge by visiting the new Dunstable fire station. A superb talk by Ram and the team kept them all enthralled, entertained and taught the guys all about **fire safety**, the workings of the brigade and the equipment used by fire-fighters. The Scouts are off on the **District Hat Challenge**, which is the start of this years District Scout competition; keen to defend the title they won last year.

The Cubs also ran out winners of the **Cub District Cross Country**, winning two of the three classes. Well done to Sam Carter, Adam Hurley and Charlie Giblin. The cubs have been out **bat hunting** with bat detectors and have done a spot of open fire cooking.

A highlight for the cubs was our **Allotment Bistro** night. With the hut transformed into a cheap Hells Kitchen the cubs used accumulated produce from the Cub allotment (sown, nurtured and planted by cubs), to prepare and cook a three-course meal for their parents. Also acting as waiters, the Cubs served up Courgette and Stilton or Tomato Soup. Bangers and mash in Onion gravy with runner beans and carrots with a desert of rhubarb or apple and blackberry crumble and custard. We were expecting maybe a



dozen parents but the cubs coped superbly well, serving a total of 44 covers complete with drinks during and tea/coffee afterwards - and not a drop spilt or crockery dropped! Thanks to the parents for their support in turning out and to Lorna, Keith, Jonny & Anne who assisted the cubs with their cooking. Many thanks must also go to our allotment neighbours for their encouragement, advice, recipes and patience during the year.

For more information about all sections contact the Group Scout Leader, ng.evans@btconnect.com

Edlesborough Parish Council (including Edlesborough, Dagnall and Northall) News

The Summer ‘Play Around the Parishes’ entertainment for the children has once again been very successful with good attendances, only one wet day when it had to be held in the Memorial Hall thus restricting various planned activities and reduction of children who could attend. AVDC are proposing to create an ‘On The Road Project’ which again will visit the Parish with a portable skate park and i-van for the benefit of children from 11years onwards hopefully to commence during October. Further information will appear on the Parish Notice Boards.

Traffic Calming

A public consultation on the Area 13 Speed Limit Review is due to take place shortly, information will appear on the Parish Notice Boards and on the Edlesborough Parish Council website: www.edlesborough.gov.uk

Dagnall ‘Build Out’

Further discussions are taking place with Bucks CC to create a safe crossing for children to cross Dunstable Road and be able to walk through the allotments to Dagnall School without having to use the main roads. It is hoped to report something more positive regarding this project, which has been discussed by the Parish Council and Bucks CC over the past 10+ years, in the not too distant future.

Litter Bins

Regrettably the litter bin kindly donated and placed on The Green has been vandalised

Vandalism

So far this year the padlock on the bridleway gate at the side of Edlesborough Church has been sawn off three times. Continuing repairs have to be carried out to The Pavilion, which include replacing broken gutters and roof tiles, (due to footballs being aimed at The Pavilion) and graffiti removed. The Council are aware of further drug dealing taking place in Edlesborough.

Road Signs

New signs have been erected in Edlesborough indicating the commencement of where Moor End finishes and High Street commences.

Lin Sargeant – Clerk to Edlesborough Parish Council – Tel: 01525 220859

E-mail: parish.council.clerk@edlesborough.gov.uk Website: www.edlesborough.gov.uk

**Edlesborough
Parish Council Meetings
3rd Thursday of every month
7.30pm Memorial Hall
Next meeting: Thurs 19th Nov 09**

*Love Through a Lens
Wedding Photography*



Simon & Stuart

Home: 01525 229 397

Mob: 07778 236 458

www.lovetroughalens.co.uk

COFFEE TAVERN

High Street, Eaton Bray

Hall for hire suitable for approximately 50 people with kitchen facilities available. Also two smaller rooms ideal for committee meetings

FOR BOOKINGS:

PHONE SYLVIA HIGNELL

ON 01525 220891

Thinking about a new lawn, patio or complete garden makeover?

For a free, no obligation quote phone:

**David Goodh
LANDSCAPING**

& Gardening Services

**Tel: 01296 660628
Mob: 07976 227785**

**Garden Design
Lawns • Patios • Driveways**



For all your plumbing & gas requirements

01582 481525

General Plumbing • Servicing • Breakdowns & repairs to Gas Boilers inc. L.P.G. • Gas Fires • Warm Air Heaters • Cookers • Unvented Hot Water Heaters • Central Heating Powerflushing • New Radiators • Cylinders and Water Tanks

CORGI Registered & Fully Insured

www.plumbingandgas.org.uk



BEFORE



& AFTER



MISTY DOUBLE GLAZING ?

KEEP YOUR WINDOW FRAMES....

....WE JUST REPLACE THE GLASS!

- UPVC • Aluminium • Or Wood

Because we replace just the glass the repair is a

FRACTION OF THE COST

of a complete replacement window.

QUALITY GLAZING SERVICES

01525 876808

**UPVC
frame
cleaning
service
available**

We also replace Broken...

- Glass • Handles • Hinges
& Locks

and Repair... Patio Doors & Conservatories!



REVIVE

HOLISTIC THERAPY

Holistic therapies are concerned with treatment through massage, manipulation and relaxation. They are not only treatments for one physical ailment or one part of the body, but also treat the person as a whole.

Ideal for today's stressful lifestyles.

Treatments include:

Aromatherapy Massage

Indian Head Massage

Reflexology

Reiki

Crystal Therapy

I also run Reiki courses so you could learn how to become a Reiki Master so that you can help yourself as well as others.

Also available... Manicure / Pedicure

Vouchers are available for any treatment, so why not treat a loved one or friend as well as yourself.

Edlesborough based. For more information or to book an appointment call

Kate Meredith IHHT, RGN, on 01 525 221380

Established over 10 Years

Duncan Tomblin TREE SURGEON

Forestry Contractor • Tree Felling
 Crown Reduction & Thinnings
 Deadwooding • Hedge Cutting
 Stump Grinding • Site Clearance
 Private Agriculture Fencing Contractor
 Chipper & Stump Grinding Hire
 Digger Hire

**FULL PUBLIC LIABILITY INSURANCE
FREE ESTIMATES**

'The Best Choice For Your Tree'

TEL: (01525) 221946

MOBILE: (07802) 410728

12 Greenways, Eaton Bray, Beds



EB Lions AFC

As we hope everyone knows by now, E. B. Lions AFC is a children's football club for the boys and girls living in and around the villages of Edlesborough, Eaton Bray, Dagnall and Northall. Formed in 1994, the Club has grown enormously in the last 7 years and now has 16 teams this season 2009-10, with 200 children, predominantly living in the village, playing competitive and active team sport. We have boys and girls teams ranging from Under 5's up to U15's and have almost 40 brilliant coaches, most of whom are FA qualified and CRB checked and all devoted to creating fun, improving fitness, technique, team spirit and above all else confidence and memories.

We are working hard to develop our players and teams to continue the successful, happy and thriving Club we have been building. Our 5 year plan is to grow to 20-25 teams maximum with 275 children, which we feel is the optimum size of Club that our Geographical Parish player base/demand can and will support.

Please look us up on our website - www.eblions.co.uk

Additional Players

There is a real and strong demand for village based football now, where the skill levels, coaching and development of players and teams is one of the best in the County. This also allows the boys and girls to play with their classmates and friends.

Whilst we have been hugely successful in stimulating demand and our teams are all of a good size and standard, we do have a small number of opportunities still available in certain age groups/teams and these are detailed in our advert in this month's Focus overleaf.

Moreover, we are now actively forming 3 new teams - **boys and girls year 1** (next seasons Under 7's) and also a new Girls team for **girls in school year 3 and 4** (next seasons Under 10 Girls), so would particularly like to hear from you if you fall into these age bands - enquiries@eblions.co.uk or telephone Carol Mercer on 01525 220436.

There are 1 or 2 places available at Boys year 4, 5 and 6 so please get in touch if you are keen. Finally there is just 1 or maximum 2 additional places in both the boys and separately girls U14's (year 9) teams and we would love to hear from you too!

Our player registration fee is amongst the lowest in the area, made possible by not having the cost and liability of our own ground and is great value as it includes all subs and playing kit too. More importantly, the huge support of our team sponsors, who make such a huge contribution, helps keep fees low. Please see our website for our current sponsors details and we thank them again for helping us so much.

Charter Standard Community Award

We are delighted to announce that EB Lions AFC, after much focused work by our committee along with our dedicated coaches, has secured the coveted Charter Standard Community status from the FA this September. There are only 6 Charter Standard Development Youth Football Clubs in Bedfordshire who hold this highest level CS status.

This scheme is a core component of the FA Football Development programme. The scheme established minimum standards for football development and acts as a quality assurance mechanism recognising well run schools and clubs. As a benchmark for

quality it will improve the playing experience for all. Community Clubs, the pinnacle of the club development pathway, will be those that have a high quality, multi-team (minimum of 10 teams) set up with excellent social, training and playing opportunities for all. As such, the number of Community Clubs is one of the truest measures of success for The FA Football Development strategy’.

<http://www.thefa.com/GetIntoFootball/CharterStandard/Club/FACommunityClubs.aspx>

Youth Football Clubs are the heartbeat of football in this country. That is why The FA Charter Standard club programme, which raises standards and recognises and rewards quality, is so important and is a big priority for the FA nationally. It demands strong governance (CRB, codes of conduct etc) and beliefs, including the FA’s Respect campaign which we fully endorse.

Parish Councils

We enjoy huge and very appreciative support from the Parish Councils in Eaton Bray and Edlesborough, plus the Dagnall Village Council, who allow us to play all our matches in the centre of our community and on pitches and village Greens, where anyone can come along and watch.

Eaton Bray Parish Council have very kindly just confirmed agreement for us to use the Rye (previously Eaton Bray FC) pitch for our younger 11 a side teams and this is gratefully appreciated in supporting our growth and provision of local, quality sport.

Schools

The three local Primary schools are hugely supportive of the Club and we enjoy the use of Edlesborough Schools facilities for training and development (many thanks to the new head, Jane Foster). Moreover all 3 schools actively promote us within school and we have recently seen a surge in the number of children from Eaton Bray joining the Club, which is fantastic news.

Projects

We have had significant support from the Football Foundation, who have provided substantial funding over a 3 year period to allow us to develop new teams and enhance coach development, with a substantial number of our coaches undertaking their FA Level 1 and increasingly Level 2 FA coaching badge. Last month (October 2009) we are proud to advise that we have 6 coaches starting their six month Level 2 badge, all funded by the Club through FF support.

We also have a project well advanced, which will substantially increase the equipment we provide for our teams and players and with the added involvement of a number of young potential coaches. The FA is concerned about the high drop out rates of teenagers at 16-18 age group from football and we have a number of players whose teams have finished, but who would like to stay in football. With the help of the following grant and funding partners we are looking to offer them intensive coaching and training and to become role models to the younger players/teams.

The project cost including equipment and coaching support/badges will be over £3,500 and would not be possible without the following:-

BovisLendLease – via our U10 Coach Jason Reynolds (whose employer has kindly provided community grant through his involvement),

St Marys Carnival – who have supported us over the last few years,

Bucks Playing Field Association

The AVDC PAYP scheme to support 13-19 year olds.

.....and of course the fruits of our own fund raising. There is the further possibility of additional grant funding which will increase the project and equipment purchased even further.

Other Club News

Other noteworthy news in the active and busy world of E B Lions is:-

- Our fitness coach, Nick Bramston, who has gained his first module of the FA Level 3 coaching badge is working with many of our teams to improve fitness and agility at all levels.
- We have appointed Richard Potton to the Committee and specifically to be our Girls Football Development Officer. We have 4 girls teams already and are at the forefront of this fast growing and exciting area of football.
- Rob Gadsden won the first Janet Hatfield annual trophy for his contribution to the Club. Rob is only 18 and is our first young sports person to develop his coaching skills. He is starting his Level 2 as we speak and has done wonders with our U13 boys team, alongside Adrian and Ian. He is a wonderful advert for the youngsters living in our villages. Rob also won a County FA Development Workforce Award for Young Volunteer of the Year.
- Adrian Bush also won a County FA Development Workforce Award which recognises the huge contribution of volunteers within the game.

And Finally!!

We work alongside the Eaton Bray and Edlesborough Scouts as well and you will know from last month's Focus how well they are doing, with demand for places at an unprecedented level and with dynamic, keen and committed leaders.

We are both providing high quality, structured and organised fun and learning for the children in the villages and are leading the way in the Counties in our chosen subjects. The children are fortunate to enjoy such wonderful opportunities and in turn do us all proud with their commitment, effort and behaviour which doesn't always get as much noise as it should. So we have, in case you didn't know !!

The Travelling Crib 2009

St Mary's sent out its first Travelling Crib during Advent 2004. Now the Travelling Crib is an established feature of December in the villages with our Mary and Joseph crib figures travelling from one house to another until they arrive back in church for our popular Candle Services on Christmas Eve.

Each day the family with whom the figures spent the previous night deliver them to the next recipients. It is an opportunity for two families to conduct a brief act of worship together and, in many cases, share some simple seasonal refreshments. As such it is a way of bringing a little religious focus to the run up to Christmas and an opportunity to get to know some other people in the villages a little better.

If you would like to take part in this delightful custom please sign up on the notice board in church – the church is open every day so you can call in any time. For more information please contact Gordon Gray – 220136.



More Than 230 Buckinghamshire Walks to Download and Print FREE!

There's no doubt about it, walking is good for you. It's good for your heart, it's good for your lungs, it's good for the muscle and bone growth of your children and it's good for your feeling of wellbeing! Strong scientific evidence now supports the many benefits to health of regular walking – it is recommended that we take at least 10,000 steps a day.

Studies show that walking can reduce the risk of coronary heart disease and stroke, lower blood pressure, reduce high cholesterol, reduce body fat and enhance mental well being.

Walking offers a great way to help kids get the active habit. If parents express excitement about the prospect of a walk in the countryside, they are more likely to transmit this feeling to their children. It's important to treat the walk as an exploration or adventure and to go at the child's pace, no matter how often they want to stop and look at things; take treats to eat and plenty to drink; and head for some landmark that will appeal to them such as a castle, a playground, an ice cream van or a boating pond. If children experience walking as part of a fun activity they are more likely to want to go again.

So, how do you find out what is on offer? John Harris, a keen walker, got fed up with the lack of information on walks that were going on in the County. So, he decided that if he couldn't find what he was looking for – he had better create it! So www.walkinginbucks.co.uk came into being.

www.walkinginbucks.co.uk gives you all the information you need for the best walking in the County:

Details of more than 230 walks to download and print free, details of all the Buckinghamshire walking groups, maps and walk books – plus loads more information. So check out the website and get walking!

All Saints, Dagnall - Services & Meetings in November 2009

Sun. 1st Nov.	10.30 am	Family Communion for the Festival of All Saints
	6.00 pm	Evening Service with Holy Communion
Wed. 4th Nov.	7.45 pm	Mid-week Meeting – Daphne Brown speaks about the charity “Water is Life”
Sun. 8th Nov.	10.30 am	Morning Service
	6.00 pm	Sung Eucharist
Wed. 11th Nov.	7.45 pm	Mid-week Meeting – Robin Gurney speaks about his work with the World Council of Churches
Thu. 12th Nov.	7.30 pm	Eucharist
Sun. 15th Nov.	10.30 am	Family Communion
	6.00 pm	Evening Service
Wed. 18th Nov.	7.45 pm	Mid-week Meeting – Speaker: Revd John Heffer
Sun. 22nd Nov.	10.30 am	Family Service
	6.00 pm	Eucharist
Sun. 29th Nov.	10.30 am	Informal Worship
Wed. 2nd Dec.	7.45 pm	Mid-week Meeting led by Revd Peter Dudeney
Sun. 6th Dec	9.00 am	Eucharist
	10.30 am	Morning Service
	6.00 pm	Evening Service with Holy Communion

Sunday School meets each Sunday at 10.30 am.





Eaton Bray Lower School



Christmas Fayre

Saturday 28th November

12.00 – 2.30pm

Get in the Christmas spirit by coming along to our Christmas Fayre

There's lots to keep all the family entertained including:

- | | |
|--|---------------|
| Christmas gifts | Lucky dip |
| Photo with Santa | Cake stall |
| Tombola for adults and children | Face painting |
| Refreshments including lovely homemade soup
plus loads more.... | |

Everyone's welcome, we're looking forward to seeing you!

Art SHOW

ToWn FaRm Open STudio

Paintings, Prints, Sculpture,
Woodcarving, Textiles and Jewellery by

Christine Bass > Susan Eiskine--Jones
Kirsteen Holuj > Julia Parkes > Sue Richardson
James Sansome > Mick Waterhouse > Kate Wilkinson

For samples of our work
see townfarmopenstudio.blogspot.com

An art show to get you in the mood for the festive season!
Mulled wine, mince pies and a display of
high quality, handcrafted gifts, Christmas decorations and cards.

ONE WEEKEND ONLY:
Friday 27 – Sunday 29 November, 10am – 5pm

6 Town Farm, Off High Street, Cheddington, BEDS LU7 0TT
PLEASE PARK ON HIGH STREET – NOT IN TOWN FARM!

Free entry and refreshments. Donations in aid of
Iain Rennie Hospice at Home (Reg Charity No 297847)

DUNSTABLE DOWNS
ROTARY CLUB

CHARITY QUIZ EVENING

SATURDAY 14 November 2009

7.15 for 7.30 start
EDLESBOROUGH MEMORIAL HALL

TICKETS £9.00
TO INCLUDE PLOUGHMAN'S SUPPER

RAFFLE

TABLES OF EIGHT

Please call Malcolm on
07768 415605 or 01525 222711

PLEASE BRING YOUR OWN
DRINKS AND GLASSES

ALL PROCEEDS TO BE DONATED
TO MACMILLAN NURSES

Christmas Fair

Sat 21st Nov
Dagnall Village Hall
1 - 3pm

Lots of gift ideas
Mince pies & mulled wine
Raffle
Santa's grotto

All profits to go to Dagnall School
and Dagnall Under Fives.

* * *



TEA DANCE

Come and enjoy
a fun afternoon
dancing to the music
of yesterday,
with a delicious traditional tea

It's all happening at
Eaton Bray Village Hall
Saturday 21st November
from 3.00 - 5.30pm

Tickets £7.50
from Vivienne Grundy 222726
or Lyn Stubbs 220731
The proceeds from this event are going to
Merlin - the lasting healthcare charity

EDaN Youth Games and Quiz

4 - 6 pm

Saturday 21st November
Edlesborough Memorial Hall

* £1.50 per ticket including
refreshments *

For young people aged 8 to 13
years

Prizes for winners

Come and play party games and
test your brains in a quiz

2 chances to have fun and win

Parents welcome to stay but not to play!

Please phone Liz Coates on 01442
842550 to reserve your place
Pay at the door

Christmas Fayre

Eaton Bray Village Hall
Saturday 14th November

12.00 - 3.00pm

COME & SEE SANTA



Gifts, crafts, cakes,
toys, tombola, chocolate
tombola & raffle

plus,
a great light Lunch Menu

In aid of:
St Mary's Church Funds

Admission 50p



By kind permission of Samuel French

Front Row presents

AUDACITY

By Simon Mawdsley



Phillip is going through a messy divorce. To make himself some money and give his life a boost of adrenalin, he devises a cunning scheme to rob the London department store of Jarvis and Klein of its daily takings. He recruits John and Dave to help him. The plot seems to be going well until the wives get suspicious ...

This is an entertaining and amusing play, full of twists and turns, which will keep you guessing right to the end!

Thursday – Saturday 26– 28 November 2009

Eaton Bray Village Hall 8.00 pm

Licensed bar from 7.00 pm

Box office opens 1 November 2009 01525 222283



Friends Of Edlesborough School

CHRISTMAS MARKET

**Join us at our Christmas Market
on Friday 4th December from 5 - 7pm**

Let our fabulous choir get you into the Christmas spirit!

Visit Santa, have a go on the tombola, enjoy mulled wine,
roasted chestnuts, hot dogs and candy floss

Lots of stalls full of perfect gifts for Christmas

We look forward to seeing you there!

Tree of Light 2009 to 'Light up a Life'

Wednesday 9 December 2009 7.30pm

A tree will be lit outside Florence Nightingale Hospice (in the grounds of Stoke Mandeville Hospital) during a short ceremony of dedication.

This is an opportunity to honour someone special to you by sponsoring a light which will shine out through Christmas and the New Year. Your dedication will be recorded in a Book of Honour. For every light you have shining, you will receive a personal card of acknowledgement. Special 2009 pin badges will be available for a donation in our shops, warehouse and the hospice.

We do hope that you will be able to join us at 7.15pm for 7.30pm. Mince pies will be served after the ceremony, and there will be an opportunity for you to view the Book of Honour. Please don't forget to bring a torch and wrap up warm!

Tree of Light donations go towards supporting the work of Florence Nightingale Hospice. Thank you. Florence Nightingale Hospice Charity, Unit 4 Aylesbury Business Centre, Chamberlain Road, Aylesbury, HP19 8DY Telephone: 01296 429975

CHRISTMAS FAIR

SATURDAY 5th DECEMBER

10am - 2pm

**SALVATION ARMY
BOOTH PLACE, EATON BRAY**

ENTRANCE: 20 pence

**FAIR TRADE TEA, COFFEE AND
HOT CHOCOLATE
CRAFTS, CHRISTMAS GIFTS AND
GOODIES, SWEETS AND CAKES,
KEY-RINGS, CHRISTMAS CARDS
AND TAGS**

**BRING A GIFT TO OUR
WRAPPING SERVICE**

**ALL PROCEEDS GOING TO THE
YOUTH GROUPS OF EATON BRAY
SALVATION ARMY**

Florence Nightingale Hospice Charity November Diary Dates

Monday 2nd Flower Arranging Evening at Aylesbury Grammar School with Neil Gurney - back by popular demand. The cost is £7.50 per person and includes a cold drink and biscuits. Do come and join us at this entertaining event with the very talented Neil. Tickets available before the event or on the door.

Fri 13th - Mon 16th Turkey & Tinsel Weekend in Weymouth. Transport, trips, hotel and entertainment included.

Sunday 15th Thame's Got Talent 2009 at the Spread Eagle, Thame. Any act from any age group welcome - solo, group or troupe! See www.thamesgottalent.co.uk in aid of Florence Nightingale Hospice and the Phoenix Appeal.

Friday 20th Charity Fashion Show at Aylesbury High School with students & volunteers modelling outfits from our hospice shops.

Saturday 21st Christmas Bazaar at Eskdale Road Community Centre - 11.00am - 2.00pm.

Saturday 21st Music Quiz with Fish & Chip Supper, Hawkslade Community Centre starting at 7.30pm. £10 per person, maximum number in team is 8.

Saturday 28th Christmas Supper Auction - venue tbc.

Further details of all events are available on 01296 429975 www.fnhospice.org.uk

A Village Choir in Dagnall?

How many of you saw “The Choir” on television recently? Did you enjoy what you saw and heard? Did you notice the sense of togetherness, a feeling of being uplifted, the friendships made with people you had not spoken to before and overall, a sense of pride amongst the community.

We already have a good community spirit in Dagnall, which showed itself at the recent Race Day and at the Harvest Supper. Add to that the Village Hall and Church with its organ and piano, most importantly what we do need are folk who love singing and would like to sing, and a choir master or mistress to inspire and lead us.

Has “The Choir” influenced you enough to want to do something along similar lines. Have a think about it and if you want to take it further contact Geoff Ward on 01442 843515 or Val Lumley on 01442 842214. This request is open to everyone, not just in Dagnall, and we look forward to hearing from you.

Northall Age Concern Wednesday Club...

meet every Wednesday for a homecooked lunch at Northall Village Hall. We provide transport with our own minibus and trusty team of volunteer drivers. We are pleased to have welcomed some new members at the end of September and are expecting more to join in October. We do still have some places spare, so please do contact us if you would like a good homecooked meal (cooked by our five teams of loyal, local volunteers) and some company each week.

We are looking forward to an outing for lunch in November, and a Theatre Trip in January... will we have time to fit Christmas festivities in?? Yes, of course we will... any excuse for a good party!!

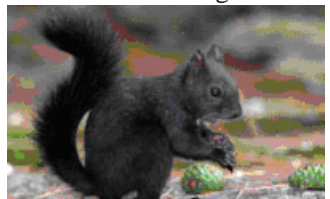
For details of how to join us, please phone Anna 221996 or Julie 220153.

Red Squirrel, Grey Squirrel, Black Squirrel ...

Once upon a time, we only had to worry about the impact of the imported grey squirrel on our native red squirrel (see blog <http://www.woodlands.co.uk/blog/conservation/red-squirrel-grey-squirrel/>). However, it now seems there is another player on the scene: the black squirrel. Whereas red and grey squirrels are two distinct species, *Sciurus vulgaris* and *Sciurus carolinensis*, black squirrels are variants of the grey squirrel. The difference between the two is largely due to a change in the gene (a specific sequence of nitrogenous bases in the DNA) that affect the production of hair and skin (melanin) pigments. The black squirrel has lost a piece of DNA associated with these genes. As with most genes, the melanin genes occur in pairs. If the squirrel has one damaged gene, then the animal has brown-black fur. If, however, it has two copies of the damaged genes then it has a glossy, jet- black coat.

Some of the first sightings of black squirrels date back to the early 1900s, but in recent years, they have become more common in parts of Hertfordshire and Cambridgeshire. It has been suggested that the black form has higher levels of the male hormone, testosterone, and is, therefore, more aggressive in seeking a mate and establishing territory.

So beware as one of our readers has reported a sighting as close as Northall!



“Were you there then?”

I hope you will all agree that the Village Slideshow, in aid of Iain Rennie Hospice at Home, 3rd October at the Village Hall was a great night out. Approximately 65 people, friends and family attended Peter’s latest guided tour down memory lane. Not only did Peter prepare the slideshow but provided anecdotes and observations of people, places and day to day life within the villages past, making the whole evening very entertaining.... even our three teenagers enjoyed it! Well done Peter that was truly an achievement.

So a big thank you to Peter & Mary Mayne for the Slideshow & Book sales, Nick, Julie & Sue at the Roebuck for ticket sales, Edlesborough Stores & Post Office for refreshment supplies, Graham Chappell for allowing the use of the screen for the fantastic raffle prize donations from High Street Hair, Hinds Butchers, Mary Mayne, staff at Threshers Off-Licence, Pam & Jimmy.... to Iain Rennie Hospice at Home for supplying the un-named bear (Bruce).... to the great helpers on the night Janet, Mary, Sam, Charlie, Emily & Bethany.

We look set to have raised in excess of £500 on the night, which goes a great way to our final target of £3,000 so thank you to all those who dug deep and gave generously. Your support is very much appreciated so please look out for us on my training over the winter (climatisation for Iceland in July).

Don’t forget to look us up in the next Focus for a final fundraising total from the slide show and for future events or if you have internet access try www.justgiving.com/janetickell for regular updates. Bernie is taking a well deserved few days break (well - he’s back at work) before his next fundraising brainstorm. He has really been the mastermind behind last nights event, and we really could not have done it without him, his passion for the village of yesteryear and yes, strangely he’s still motivated by the thought of my being away... Thank you for your support, Jane.

Early Intervention Aids Recovery from Whiplash

A whiplash injury to the head and neck is caused by the head being thrust forward and backwards or sideways, often at speed.



This type of injury is predominantly associated with car accidents and leads to damage to the ligaments, muscles, nerves and joints. The effect of this can either be fairly short lived or go on to cause many months or more of pain.

A recent survey has shown that early physiotherapy intervention resulted in reduced pain and sick leave after whiplash.

Physiotherapy uses a variety of techniques to help muscles and joints work efficiently and can help repair damage by speeding up the healing process and reducing pain and stiffness. As well as treating the problem, physiotherapists also offer advice on how you can help yourself, such as doing exercises in between treatment sessions, giving postural advice and self-help pain relief.

If you have been unfortunate enough to sustain a whiplash injury then please do not hesitate to contact us.

For more information contact: St Judes Clinic on Tel: 01525 377751 or e-mail: enquiries@stjudesclinic.com.



Stuart Ball

*Ceramic Wall & Floor
Tiling Specialist*

Over 26 yrs Experience



**City and Guilds
of London Institute**

Tiles supplied or Labour Only

*For a reliable service call
your Local Tiler*

Eaton Bray 229381

N.D.S.

General Building & Plumbing

(Established over 15 years)

- **Extensions - Loft & Garage conversions etc.**
- **Kitchens & Bathrooms fitted**
- **Installer of PVCu guttering, soffits & fascia boards**
- **Roofing • Patios & Block Paving**

Tel: 01525 221470

Mobile: 07941 563424

FREE ESTIMATES

...

NO JOB TOO SMALL

**Unique
designs**

- Full design - manufacturer and installation
 - Free planning and free estimates
 - Any size/shape/colour scheme
- Traditional & contemporary door styles
- Natural woods and solid colour finishes
- Home offices also designed & installed
 - 5 year guarantees



**Unique
BEDROOMS DIRECT**

Visit our Showroom at:

Unit 28,
Icknield Way Farm,
Tring Road, Dunstable,
Beds LU6 2JX



www.uniquebedroomsdirect.co.uk

01525 229331

**PUERTO BANUS
MARBELLA
SPAIN**



Recently built luxury 3 bedroom, 2 bathroom apartment approx 1 mile from centre of this well known Spanish marina. 45 mins easy driving from Malaga airport, served by Easyjet, Monarch etc.

Facilities include all mod cons including air-con, satellite TV, fully equipped kitchen, swimming pools, excellent clubhouse and tennis courts. Many golf courses and all weather bowling greens nearby. Climate makes this ideal for holidays throughout the year. Rates vary according to season (£300 - £750)

For a brochure and details call Peter or Celia on **01525 220173** or visit the website at www.479losnaranjos.co.uk.

Golden Years Day Care Ltd
For The Elderly

- Pick up / Take home by car
- Held in local community rooms
 - Fully trained staff
- Visiting hairdresser/beautician/podiatrist
 - Full daily programme
- Home cooked meal and refreshments throughout the day
 - Fully insured
- Regular day trips (at extra cost)
 - Fees paid in advance

Call Sue Tearle (01525) 852764
Katrina Fountain (01296) 429785
E-mail : susantearle@tiscali.co.uk

Company Reg No 6565874

**HPC Registered
CHIROPODIST & PODIATRIST**



(Also Central Luton surgery - open 6 days)

**R.J.O'CONNELL
BUILDING SERVICES**

EXTENSIONS, PATIOS,
DRIVEWAYS, ROOF REPAIRS
AND PROFESSIONAL
DECORATING SERVICE

**TEL: 01296 681323
MOB: 07855 236726**

*Painting/Decorating Curtain Rails
Kitchen Fitting Tiling Shelving/Flat Packs*

YOU need LITTLE JOBS if



Shelves scare you, flat pack frustrates you
or mowing doesn't move you,
you need someone to **Do It for You**

For your General
Home Maintenance needs

**Contact Carl Bird on 01582 703039
or Mobile 07773 230055**

*Floor Laying Gutter Cleaning Fencing
Loft Boarding Gardening etc.*



The Edan Project Traffic Management Team

“Watch out! SPEEDWATCH is about!

By now we hope that you have all seen Speedwatch in action.

The Traffic Management Team are devoting considerable time in deploying “Speedwatch” on a regular basis around the three villages.

The success of “Speedwatch” is undeniable. Average traffic speeds in excess of the speed limit are immediately reduced to less than the speed limit, with the most cautious drivers passing by at less than 20mph!

We are now working on a system to maintain the speed reductions, even when “Speedwatch” is not obviously in use. To this end, we are currently carrying out a Speed Census and we hope to be able to report details of this in future issues of “Focus”. This data will establish our approach to both Bucks County Council and Thames Valley Police in order to find the best way to enforce the speed limits they have imposed in the villages.

Also with regards to keeping vehicle speeds down, we hope that by seeing “Speedwatch” in constant use, drivers will be encouraged to stick to the speed limits when driving in, and between, our villages. If we can help just one driver to avoid an accident, or bring about the reduction of speed of an impact, thus saving a life, our time will have been well spent.

The Traffic Management Team feel that it is not just the villagers we need to encourage to drive more considerately, but that our efforts should also be strongly aimed at the “through traffic”, both cars and heavy goods vehicles.

We have received information that the numbers of heavy goods vehicles passing through our villages have reduced since the completion of the M1 widening. (Does this give more space on the roads for higher speeds we wonder??) We are therefore undertaking another vehicle count, approximately six months after our first count, noting both the volume and type of vehicles passing through.

It was interesting to note that our first traffic census on the A4146, when compared with a Hertfordshire Highways Agency Census, had almost identical numbers of cars recorded on the A4146 hour by hour, despite the fact that the Herts. figures were taken over two consecutive days in July at Great Gaddesden, while ours were taken in one hour segments, making up one day in total, but spread over the three villages and taken at random over a week in May. This similarity indicates that traffic volumes increase and decrease in a similar pattern along the entire length of the A4146, a fact that hopefully will be useful when targeting speeding vehicles and developing a strategy to control volumes of certain types of vehicles.

If there are any “number crunchers” out there who would like to help, or any more volunteers to help man the “Speedwatch” in the three villages, please contact:-

David Gravestock – davidgravestock@btinternet.com

Lorna Cabbage – lornacabbage@larums.com



**The National Trust
South Beds Assn**

**Wednesday 4th November
Canons Ashby: Its History, and
plans for the future**

Paul Hatfield

**7.45pm, Salvation Army Centre,
Bull Pond Lane, Dunstable**

Visitors are welcome at £1

*For further information
phone 01582 527790*

The Church Mouse

The October meeting of the P.C.C. was chaired by one of the churchwardens.

A new volunteer has been found to wash the church linen and the small change collection will be used to replace any linen that is no longer usable.

Sick visiting is now well established and those who put names on the prayer board will be asked to find out if these people would like a visit or a phone call.

Roger Chapman and his family have moved into the vicarage prior to the licensing on November 2nd for which volunteers will be needed to clean and tidy the church and move chairs on the day.

From January 2010 the 22 members of the Mother's Union have decided to become known as the St Mary's Ladies Guild. The Mother's Union will be disbanded at a service in December.

The Harvest auction raised £326 for the Bishop's Appeal for the Harvest.

There will be a Christmas Fayre on November 14th in Eaton Bray Village Hall from 12noon to 3pm. An appeal is being made for cakes, craft items, raffle prizes etc.

The All Souls service will be rescheduled after consultation with Roger Chapman.

The Swine Flu precautions at present in place during church services will be reviewed after the licensing.

The refurbishment of the vestry is almost complete and the electrics, sound system and new boiler will shortly be finished.

Church income is seriously down and the congregation will be asked to help with the shortfall and a stewardship presentation will be made in the New Year.

The new House-Group at Dagnall is going well and a new edition of Mission Praise is being purchased to enable the congregation to have a wider choice of music for their services.

In order to raise funds a 'St Mary's Got Talent' show for adults and children is being arranged for 2010.

Hymns on the Green at Edlesborough was well attended this year.

The meeting closed with the Grace.



Dunstable & District Local History Society

Tuesday 10th November, 7.45pm
Bedfordshire Breweries

Well-known historian James Collett-White talks about the various locations where ales were brewed, and the businessmen whose names have become synonymous with the drink they produced.

Methodist Church Hall, Dunstable

Visitors always welcome

Wednesdays
1:00pm to 2:45pm
(during term time)
Eaton Bray Village Hall

cheeky monkeys

under fives play time

£1.50 per adult / £1.00 per child / 50p under 1yr

- creative play
- singing
- stories
- baby corner
- craft
- juice & biscuit
- tea or coffee
- and more!

Come along,
make new friends
and join in
the fun!



Edlesborough W.I.

During the last few weeks we've had our normal monthly meeting and our Birthday Dinner, both very enjoyable.

The speaker at our meeting was Doreen Kempton who demonstrated ribbon floral art. Doreen showed us how to make decorative flowers for gifts, tables and such items as candle holders. She makes these by cutting ribbon into varying widths with a special cutting tool, winding the strips around a narrow stick and taping them. The decoration is then eased off the stick and, according to the colour and width of the ribbon strips, forms a really attractive flower. Other examples of Doreen's craft were butterflies and pom-pom bows. It was fascinating to watch so many different arrangements being created.

Doreen raises money for charity by demonstrating and selling her decorations. Her young grandson was treated successfully for a brain tumour in John Radcliffe Hospital recently. As a 'thank you' the money goes towards the upkeep of Ronald McDonald House where parents stay when their children are being treated in the hospital. Toys and books for the children's ward are also provided. What a great way in which Doreen can raise the money for such a worthy cause.

Our second get-together was our Birthday Dinner at Dunstable Downs Golf Club arranged, with our thanks, by Ann Brinklow. As usual, we had a lovely evening there. Our guest and speaker was Zena Skinner, well known as a T.V. cook a number of years ago. This fantastic lady was born in the same year as the Queen and, like her, is still working. She gave a very amusing and quite energetic talk on 'When to Retire'.

Zena began by telling us of her time in the Services during the war years. She described being kitted out with the uniform, and painted a very amusing picture of how certain garments were worn. She learned to type, and progressed to work on coding until her demob. Next she trained as a cookery demonstrator and worked for the Electricity Board in Royston. After promotion she travelled around a much larger area in her demonstration work. Later she was involved in going to the West Indies and East Africa for a few months at a time, in order to train cookery students. She helped with the introduction of refrigeration into Jamaica and the cooking of speciality dishes in all districts of East Africa.

It was at this time that Zena decided to go freelance. She wrote articles and gave talks, and this led to work on radio and television. Butchers told her they did well in their sales of meat after she gave her demonstrations on T.V. Many of us remember Zena's appearances, which ran from 1959-1989. One of her memorable demonstrations was to Sandringham W.I., where she was introduced to the Queen. Since 1989 Zena has donated money from her appearances to British medical charities, mainly Pasque and Keech Cottage Hospice. She says she has no plans to retire yet!

Zena kept us all laughing by the descriptions of different events in her life. She really is an amusing lady, and remarkable for her age. We would welcome her back at any time. Thank you, Zena.

Christmas Goose

Order now
Home Farm

Northall

Tel: 01525 220274



Edlesborough Book Group – Review **The Golden Notebook By Doris Lessing**



Doris Lessing's famous novel, first published in 1962, has the reputation of being one of the first books to be written about women making their way independently in the 1950's. Society as it was then frowned upon single women, even more so if they were divorced and life was very difficult, if not impossible for a mother on her own. Women have made great headway in the fifty years since the book was written, but many of their dilemmas and difficulties remain true today. Maybe that is why *The Golden Notebook* is regarded as a classic.

The plot tells the story of Anna Wulf and her friends and of the way their lives intertwine and influence one another. Their previous shared histories and knowledge of one another's foibles form the backdrop to the book's main theme. Anna has had success as an author with her first novel and is now struggling with writer's block as she tries to write a second book. Musing on the many 'selves' that make up a whole personality she decides to keep four notebooks, each representing different parts of her life. In this way she hopes to make sense of the doubts and difficulties she faces and to unlock the block on her writing. Each notebook has a different colour. Black for her life in Africa, red for her political viewpoint, yellow for a fictionalised version of herself and blue for a diary. By analysing herself from these angles she manages to bring them all together in *The Golden Notebook*. In doing so she finally accepts the limitations of her life and times.

This was not an easy book to read. The format was unusual and took time to make its points. Those of the group that persevered all wanted to read the book to its end and said that they found it a worthwhile read. Many of the group however gave up on the task and said that they found *The Golden Notebook* too introspective and not gripping enough to make them want to carry on reading.

The subjects raised however, women's independence, changed roles in education, society and politics made for a good discussion. Those who had not finished the book, then vowed to read it at a later date.

Leighton Buzzard Woodcraft Folk...

meet at Brooklands Middle School (Brooklands Drive, Leighton Buzzard) on Monday nights during term time, from 6:30 to 8:00 p.m. It is an 'Elfin' group which means it is for children aged from 6 to 9. Sessions cost £1.50 (first week is free!), which can be paid on a weekly basis.

The Woodcraft Folk is an educational movement for children and young people, aiming to develop children's self-confidence and involvement in their community, to encourage friendship and co-operation, while at the same time having lots of fun! Typical activities include creative craft projects such as making collages, or map reading, hiking and playing games. There are also opportunities to go on camps. New members and adult volunteers are always welcome. Please phone leader Chris Braithwaite on 01525 370900.

**PRIVATE
TUITION
GCSE and 'A' Level
Biology and Chemistry
Tel: Richard on 07792780891
or 01582 665300**



An FA chartered standard community club
(Sept 2009)



EB Lions AFC

Do You Want to play Football?

Then come and join an award winning and friendly youth football club and have fun playing competitive football.

We are one of the biggest clubs in the county and can offer you FA qualified coaching and great team sport.

Located in Edlesborough/Eaton Bray and serving the surrounding area we are currently looking for new players to strengthen our already successful teams.

If you are currently in school years: Boys 1,4,5,6 & 9 - Girls 3,4 & 9, we want to hear from you.

Tel: Carol Mercer **01525 220436**
email : **enquiries@eblions.co.uk**
www.eblions.co.uk

**Winner Eastern region
FA Chartered Standard
Development club of the year 2008**



www.

DRIVESTYLE VANS

.co.uk

NOW you can buy our vans directly via our new WEBSITE.



LOW COST VAN & TRUCK HIRE

You Can't  Our Vans

Call Us Today to Book Your Vehicle

Flitwick Depot

01525 715 000

High Street Flitwick MK45 1DU

Milton Keynes Depot

01908 319 777

Haversham Road Wolverton
Milton Keynes MK12 5TN

Dunstable Depot

01582 600 465

31-37 London Rd
Dunstable LU6 3DH

Leighton Buzzard

01525 211 175

Watling St, Hockliffe
Leighton Buzzard LU7 9LJ

S E W S O F T
interiors



- ❖ Handmade Curtains and Valences
- ❖ Roman, Venetian, Vertical and Roller blinds, Cushions and Upholstery
- ❖ Tracks and Poles
- ❖ Everything beautifully made and fitted to the highest standards
- ❖ Exceptional personal service in your home, taking care of all the details, reducing your stress
- ❖ You can use your own or choose from a range of the latest fabrics as well as the more traditional favourites

Call me

Sue Hawkins on

Whipsnade (01582) 873358

Mobile: 07774 140526

Email: design.workshop@hotmail.com

What do you have to sell?

Sell it on eBay!

We'll Sell **ANYTHING** for You

Make money from those unwanted items to hidden treasures

Business enquiries welcome

Nick and Emma

01525 220256

Or visit us at

Buffalo House Collectable Pottery Centre
Mill Road Slapton

And enjoy our Aladdins cave of old and new pottery, Moorcroft, Martin Brothers, Torquay Mottoware, Muggins stoneware and much more



DIGITAL & ANALOGUE

TV & FM Radio Aerials

Satellite Installations

Extra TV & Satellite Points

FREE ESTIMATES

☎ 01525 852912

☎ 07710 429678

Feeling Crafty

Learn to make greetings cards or to scrapbook, have fun with your friends, get the supplies you need. Classes, Demonstrations and Parties. Card & Invitation commissions undertaken.

Contact Bekka on

07990 837990 or 01525 220794

Email: bekka@feeling-crafty.co.uk

www.feeling-crafty.blogspot.com



WESTROPE BROS.

LAWN MOWER SERVICES

ALL TYPES GARDEN MOWERS SERVICED

THE RYE, EATON BRAY

Tel: Eaton Bray 220587

RD ELECTRICAL

Specialising in all types of Electrical and Air Conditioning installations including:

- ◆ Inspection and Testing
- ◆ Garden and security lighting
- ◆ Energy efficient lighting
- ◆ Re-wires
- ◆ Specialist lighting – bespoke designs
- ◆ Kitchen and Bathroom specialist

Air conditioning throughout your home

All work guaranteed.



Call Richard on:

01525 221475

07932 759680



For a no obligation quote

**MOT
TEST CENTRE**

**ROEBUCK GARAGE
HIGH STREET
EATON BRAY
220385**

**McTimoney
CHIROPRACTIC**



Margie Craib BSc BHSLDC AMC MMCA
Human and Animal Treatments

Ashridge Farm, Ringshall, Berkhamsted, Herts HP4 1ND
Telephone: (01442) 842729

General Chiropractic Council Registration No. 293



Moren Associates Limited

Virtual administrative support to
businesses & private individuals

Word processing
Spreadsheets
Desktop publishing
Presentations
Typing
and more...

Tel: 01525 229695

Email: enquiries@morenassociates.co.uk

www.morenassociates.co.uk

**ADRIENNE'S
PRIVATE HIRE**

Call for a **FREE** quotation
Book early to avoid disappointment
Very competitive prices

Airport Transfers
& Private Hire

07980 039715

Our executive Cars, 6 seater Minibuses and
lady driver are all available



GRASS ROOTS

GARDEN MAINTENANCE

Including

TREE SURGERY

**SELECTION, SUPPLY & PLANTING
OF TREES, SHRUBS & HEDGES**

(Fully insured)

BRIAN McMAHON NCH (Arb)

Tel: 01525 221960



**Rose
Cottage
Interiors**
*for Quality
Hand Finished
Curtains*

Soft Furnishing, Interior Design
& Upholstery Service
Fabrics available

Handmade Curtain Specialist
Swags & Tails • Pelmetts •
Valances • Tie-Backs
Clients own fabric welcome

**Jane Euston • Rose Cottage
Northall Road • Eaton Bray
Tel/Fax: 01525 221034**

THE COMPLETE BUILDING SERVICE

S.M. REILLY & SON

Established 1987

GENERAL BUILDERS

Extension Specialists

Tel: 01525 221740

Mobile: 07970 637511

Plastic Fascia & Soffit - Double Glazing
Windows - Doors - Conservatories
Decorating - Drives - Porches
Barn conversions - Roofing



Tel
01525 222145
Mobile
07971 559185

Lee Hutt

Heating and Plumbing Services

FREE ESTIMATES GIVEN
NO CALL OUT CHARGE
ALL WORK UNDERTAKEN
INSTALLATION, REPAIRS
NO JOB TOO SMALL
DOMESTIC & COMMERCIAL



JMC PEST CONTROL

Very competitive rates. Fast efficient service.
Wasps Ants Fleas Cockroaches Flies Rats Mice



Professional, discreet service.



Contracts welcome

Tel/fax: 01582 - 471766

Mobile: 07973 - 407027

jmcspringbank@aol.com

Don't put up with aches & pains!

Treatment for a fast recovery, injury prevention
and advice, for you and your family to lead a
healthy and active life

Health

Physiotherapy
Paediatric Physiotherapy
Acupuncture
Women's Health
Podiatry
Chiropody
Body Alignment
Ergonomic Assessment

Well Being

Pilates
Acupuncture
Reflexology
Sport and Soft Tissue
Massage

Member of The Organisation
of Chartered Physiotherapists
in Private Practice

01525 377751

enquiries@stjudesclinic.com

www.stjudesclinic.com

St. Judes

physiotherapy, health and well being



G & J Groundwork

Ring Garry

01582 477568

Mobile

07949 118011

Fencing Panels • Blockpaving
Shingle Drives • Paths • Slabs
Paving • Steps • Gardenwalls
New Patios • Relaying
Soak Aways • Drainage
Free estimates or advice
References

Trading Faces



Beauty Salon

FACIALS ♦ EYEBROWS ♦ EYELASHES
 ♦ MAKE-UP ♦ NAILS ♦ MANICURE ♦
 PEDICURE ♦ CHIROPODY ♦ MASSAGE ♦
 WAXING ♦ ELECTROLYSIS ♦
 BODY TREATMENTS ♦ SELF TANNING ♦
 SLIMMING TREATMENTS ♦ WASH ♦
 CONDITION ♦ CUT ♦ BLO-DRY ♦ COLOUR
 HIGHLIGHT ♦ TINT ♦ PERM

You'll find every Top-to-Toe Hair & Beauty Treatment you could ever want at;

Trading Faces

Wallace Drive • Eaton Bray • Beds • LU62DF
(Next to Threshers Off-Licence)

TEL: 01525 229111

OPEN TUES TO SAT 11.00AM TILL LATE

Hair-Beauty-Chiroprody

G.R. Davis LCG

Eaton Bray

Cabinet Maker • Carpenter • Joiner

House Interiors

Handmade Kitchens

Can also supply and fit Crown Imperial
kitchens, wardrobes and desks

Home: 01582 600086

Mobile: 07759 856566

D & E HINES

High-Class Butchers

Quality Beef, Pork & Lamb

Grade A Poultry

BBQ & Sausage Speciality

Renowned for 'Bunkers Sausages'

Telephone: 01525 220413

**GREAT
Outdoors & IN
CLEANING SERVICES**

PRESSURE WASHING

- Block Paving & Pattern Imprinted Concrete (PIC) Refurbished
- Driveways / Patios / Paths
- Walls / Fences / Roofs
- Guttering / Fascias & Soffits
- Graffiti / Chewing gum removal

FULLY INSURED

EXTERIOR CLEANING

- Conservatories - Hand Cleaned (Inside / Outside)
- Litter / leaf collection

INTERIOR CLEANING

- Office cleaning
- Carpets & Upholstery (ALL STAFF PROCHEM TRAINED)
- Hard floors Refurbished

0800 298 5883

FOR MORE INFORMATION VIEW OUR WEBSITE

www.greatoutdoorsandin.co.uk

37 Oldhill, SW Dunstable



MEMBER OF THE FEDERATION OF SMALL BUSINESSES

Highlights of the Minutes of the Eaton Bray Parish Council Meeting held in The Coffee Tavern on Mon 5th October 2009 at 7:30pm

Vacancy For Parish Councillor

There is a vacancy for a Parish Councillor on Eaton Bray Parish Council. If you are interested in joining the council please contact the Parish Clerk.

Police Camera In High Street

PC Viv Dady was asked about the installation of a police camera in the High Street; however as this is not her jurisdiction advised the Parish Council contact those responsible for this installation.

Mobile Skate Park

PC Dady confirmed that the police are still looking into the option of a mobile skate park, however have encountered a number of obstacles with its installation.

The Meads Allotments

Letters have gone out to all allotment tenants, with a deadline for tenancy renewals being 31st October 2009. Failure by tenants to make their payment by that date will result in the termination of their tenancy agreement and the plot/s will be offered to those on the waiting list.

EB Lions/Youth Football

Representatives of EB Lions/Youth Football Club explained to the Parish Council that the club, since being formed, has expanded greatly and need additional pitches in the area and have suggested The Rye Recreation Ground. This would be used for youth 11-a-side matches on Saturday/Sunday mornings. The Parish Council agreed to this proposal with a season to season review.

Damaged Kissing Gate (Park Lane)

The Parish Council are in the process of obtaining quotes for the work.

Damaged Bus Shelter (The Rye)

The Parish Council are in the process of obtaining quotes for the work.

School Lane Recreation Ground Improvements

The Parish Council has been informed that the main funders for the project have agreed to the council's chosen contractors/quote and work is due to commence on the Skate & Ride area.

Eaton Bray Parish Council Meeting Minutes

A full copy of the minutes for Eaton Bray Parish Council can be found on our website.

Parish Council Website: www.ebpc.co.uk

[Please note that the views or comments expressed on this website (forum) are not necessarily those of the Parish Council. The Webmaster reserves the right to remove any defamatory, derogatory or libellous statement or words from the site]

Contact Details For Eaton Bray Parish Clerk

Clerk contact times: Tuesday/Thursday/Friday
09:30-13:30hrs [messages can be left on answer phone]. **Parish Office:** 20 Good Intent, Edlesborough, LU6 2RD [Tel 01525 222601/ Email clerk@ebpc.co.uk]

<p>Eaton Bray Parish Council Meetings 1st Monday of each month 7:30pm The Coffee Tavern Next Meetings: Mon 2nd Nov Mon 7th Dec</p>

CLEAN MACHINE

01582 608855
07721 550165

PROFESSIONAL DOMESTIC AND COMMERCIAL CLEANING



Run by Branch partners Colin & Linda, we offer a friendly, professional, caring approach to the often stressful process of house moving.

3 Summerleys, Edlesborough, LU6 2HR
Tel: 01525 222333
www.christopherpallet.com



GYM & TONIC

WANT TO GET FIT, HAVE A HEALTHIER LIFESTYLE & IMPROVE THE WAY YOU LOOK & FEEL?

The following can be provided in our Gym in Edlesborough or in your home
* A Health & Fitness Consultation *
* Personal Training * Massage *

Ruth Anderson Dip. PT & ST, Member of: Inst of Sports Therapists & Register of Nutritional Therapists

Tel:01525 223074 Mob:07812 163979



Studham Lane, Dagnall,
Hertfordshire, HP4 1RH
Tel 01442 842310



Email: secretary@whipsnadeparkgolf.co.uk
Web: www.whipsnadeparkgolf.co.uk

Whipsnade Park Golf Club

Beautiful Parkland 18 hole Par 73
Golf Course, Driving Range & Short Game
practice facilities

Memberships are available and societies
welcome

Beginners Classes & Junior Academy
LTPD Programmes, Quick Fix &
Playing Lessons all available with our PGA
Coaching Staff

For our neighbouring residents we are
delighted to offer

**10% Discount on
Green Fees Or Lessons
with this Ad**

Dress Code applies, bookings subject to availability and
cannot be used in conjunction with any other promotion

Anne Brierley Designs

Designer/Pattern Cutter/Dressmaker

Specialising in Bespoke Designer
Bridalwear and Lingerie

Other Services available include:

Made-to-measure
Special Occasion Wear
Alterations
One-Off Designs
Freelance

To find out more about how
we can help you with all your sewing needs
Contact

Anne Brierley on 01525 220809
or mobile 07886737881

email : annebrierley@btconnect.com

website :www.brieranim.co.uk

Dagnall School

A Buckinghamshire co-educational school
For 4-7 year olds



'Dagnall School provides a happy and safe environment. The children are always involved in lots of activities that make learning interesting and enjoyable. My child is very happy here' Quote from a parent during our recent Ofsted inspection. (June 2008)

This is a good school. Pupils make good progress and their personal development is outstanding. Standards are well above average in reading, writing and mathematics (Ofsted June 2008)

Dagnall school offers

- small classes
- a broad and interesting curriculum
- a wide range of extra curricular opportunities
- excellent care and support
- a school that has excellent community links

Does this sound like the kind of school you would like your child to attend?
Then come and visit us and meet our lovely children and dedicated staff.

Website www.dagnall.bucks.sch.uk

E-mail office@dagnall.bucks.sch.uk

Tel & Fax 01442 842473



J.G.S. Metalwork & Son

Specialists in Gates & Gate Automation

Access Control • Security Grilles • Railings
Balconies • Weathervanes

www.jgsmetalwork.co.uk

Call in to discuss your ideas

High Street, Edlesborough LU6 2HS

Tel: 01525 220360 Fax: 01525 222786

Pressing Need

Ironing, Laundry & Dry Cleaning Service

Free Collection & Delivery
from home or office

Executive Shirt Service (Wash & Pressed)

Duvet Service (washed and dry)

For more information or to book a collection

call 01582 667332 or 07885 320042

or email: ironout@aol.com

SPRAY TANNING & NAIL SALON
above Buds of May

seventh heaven

HAVE A GOLDEN TAN & PERFECT NAILS ALL YEAR
ROUND WITH THE HELP OF SEVENTH HEAVEN!

- ♥ Fake Bake® America's No1 spray tan
- ♥ Bio Sculpture gel overlays & sculptures
- ♥ Acrylic nail extensions
- ♥ Manicure, Pedicure & Callus treatment
- ♥ Ear piercing
- ♥ Make Up application
- ♥ Bespoke parties

Call us for more details

SEVENTH HEAVEN 2a HIGH STREET EDLESBOROUGH
01525 222918 / 07863 133577 / 07725 553530
angels@seventhheavenuk.co.uk
www.seventhheavenuk.co.uk

Absolutely Plastered



**DOMESTIC/COMMERCIAL, CLEAN AND RELIABLE SERVICE,
FREE ESTIMATES, FRIENDLY ADVICE**

- * Plastering & Coving
- * Floor Screeding
- * Pebbledashing & Rendering
- * Dry Lining
- * Cornices & Mouldings
- * Insurance Work Undertaken

CALL NICK CONWAY ON

Mobile: 07751 830716

Tel: 01525 221877/01442 269565

26 School Lane, Eaton Bray, Dunstable, Bedfordshire LU6 2DT



Illustria Kennels & Kathotel

Mick and Denise Garrod
Proprietors

Offer your pet a fully licensed Dog
and Cat boarding service

Purpose-built Dog kennels

Individual Cat chalets with
outdoor exercise runs

All in pleasant country surroundings

WELLHEAD BUNGALOWS,

TRING ROAD,

DUNSTABLE,

BEDS LU6 2JU

TELEPHONE:

(01582) 665343



Neil Hodson Associates

Consulting Structural Engineers

24 HIGH ST TRING

OFFER A COMPREHENSIVE RANGE OF
**PROFESSIONAL BUILDING DESIGN,
ADVISORY AND DRAWING SERVICES**

From plans for domestic extensions to
multi-storey offices, commercial
buildings and factories.

Structural surveys, site surveying,
advice on building defects and
Feasibility Studies

Planning Applications and Building
Regulation Consents obtained.

Tel 01442 890894 OR

Edlesborough 222462

KEITH GRADLEY ELECTRICAL

83 High Street, Eaton Bray

Tel: Eaton Bray 222303

Mobile: 07976 640869

For all Domestic, Commercial and
Industrial Wiring and Plumbing
Storage Heaters, Showers etc.

Security Systems Installed

Test and Inspections

Free Estimates and Advice

ALAN BARNARD BUILDING REPAIRS

ESTABLISHED 1967

NO JOB TOO SMALL

- ALTERATIONS & REPAIRS
- NEW KITCHENS & BATHROOMS
- BUILT IN WARDROBES
- PAINTING & DECORATING
- U.P.V.C FACIAS & SOFFITS
- WOOD OR U.P.V.C DOORS &
WINDOWS
- WOODWORK

20 WELLHEAD ROAD

TOTTERNHOE, BEDS

01582 609726 & 07774 247658

WANT FINANCIAL FREEDOM?

We're looking to expand our £36 million UK
organisation with committed, ethical, hard-
working people who like to help others.

If you've a managerial, teaching, training,
HR or self employed background we've
excellent opportunities for you to develop
an extraordinary income yet work around
existing commitments. Flexible and home-
based business suits part or full time.

Call Amanda Wright on **01525 221001**
or **07956 366053 - TAKE CONTROL!**



Is your money working hard enough for you?

Your mortgage – is it on the best deal possible?

Your insurance – is it value for money? Have you reviewed if you have sufficient life, income or unemployment protection?

Your savings – are your ISAs and other savings / investments performing as you expected?

Your retirement – are your pension plans on-track? If you are retiring soon, are you ensuring you get the best annuity rates?

For a no obligation initial discussion contact Paul Pearce APFS, your local Independent Financial Adviser and see if he can help?



Email: paul@finpru.com

Telephone: **01525 220 480**

Financially Prudent (IFA) Ltd,
23 The Green, Edlesborough, LU6 2JF



Financially Prudent (IFA) Ltd is authorised and regulated by the Financial Services Authority



VANSAR BLINDS

Domestic and Commercial Specialists
In All Types of Blinds and Awnings

Local Family Business est. since 1984

- ◆ Vertical
- ◆ Venetian
- ◆ Rollers
- ◆ Wood Weave
- ◆ Roman
- ◆ Pleated
- ◆ Wood Venetian
- ◆ Conservatory Blinds
- ◆ Patio Awnings

**For a Friendly & Reliable Service
Free Measuring and Quotations**

Supply and Fitting

Contact Mark Allen

on

01525-220477

07711 257473

www.vansarblinds.co.uk

Weddings * Birthdays * Anniversaries
 Funerals * Social Functions * Balloons
 Corporate Contracts * Fashion Jewellery
 and much more ...



For all your floral requirements

Full Teleflorist member deliveries worldwide

Opening Times

Monday – Friday 9.30 am – 4.30 pm
 Saturday 9.00 am – 1.00 pm
 Sunday closed

2 High Street, Edlesborough, Beds, LU6 2HS

Tel. 01525 221920

Email: Sam@budsOfMonthlorist.co.uk

MICHAEL HUBBINS

TELEPHONE ENGINEER

Installation of Telephone Extension Sockets
 Digital, Satellite & Internet Sockets

Also Domestic Electrical Work Undertaken

Tel: 01582 471648

Mobile: 0771 8834851



Stephen D.

Janes

Est. 1982

CARPENTRY, JOINERY

KITCHENS FITTED

PROPERTY MAINTENANCE

TELEPHONE: 01525 220649



WOODSIDE CLINIC

OSTEOPATHY, PHYSIOTHERAPY,
 CRANIAL OSTEOPATHY, CHIROPODY/
 PODIATRY, PILATES AND VARIOUS
 MASSAGE THERAPIES

*Provided in our great new
 facilities by friendly, caring staff*

88 Great Northern Road,
 DUNSTABLE, Beds. LU5 4BT
Tel: 01582 608400

28A High Street, LEIGHTON
 BUZZARD, Beds. LU7 1AH
Tel: 01525 372447

Also in SHEFFORD, near Hitchin

Anne Johnson D.O.

Registered Osteopath

6 Moor End, Eaton Bray

01525 221958

07957 250682

Daytime and Evening

Appointments Available



Digital +

Aerial & Satellite Systems

Tel: 01525 237498

Mobile: 07970 260518



www.digitaltelly.tv

Every child matters at Edlesborough School!



‘Standards reached by learners are good’

**‘Personal development and well-being of
learners is outstanding’** OFSTED 2008

Edlesborough School is a co-educational village school for children from 4 to 11. We provide the benefits of a continuous primary education and the broad experience of a highly professional and caring staff.

Our aim is to help all children achieve their maximum potential as individuals and as members of society.

**We would welcome the opportunity to show
you round our friendly school.**

**Please ring Janet Hatfield on 01525 220431
www.edlesborough.bucks.sch.uk**



The Jackson/Henleys of Eaton Bray

With reference to the story in Focus Magazine with regard to the discovery of Cyril Jackson's grave, let me say - it was never lost! I was first made aware of it nearly fifty years ago by village people when gathering facts on the village history.

Moving on to 1987, the Dunstable Gazette ran a story from a man in Leeds searching for information for his family tree. I contacted him and over the next few years we pieced together his family's Eaton Bray connections together with photographs. Unfortunately Roger died in 2004.

To cut a very long story short, I'll start in 1854 when Joseph Henley married Kitty Abrahams. Joseph was a farmer's son and Kitty's parents were tenants of (Richard Fountains) Fountain Pub in the High Street, now May Close. The product of their marriage was 8 children, William, Elizabeth, Anne, John, (he died very young) Mary, John, Louisa and Arthur. For the purpose of this exercise it's Mary we are interested in for it was she who married Jeffery Jackson on 14th April 1884, they also had 8 children, Elizabeth, Cecil, Arthur, twins Ethel and Hettie, Gertrude and twin boys Alec and Eric.

Back to Mary's brothers and sisters! William married Mary Trippit and very shortly moved to York as an agriculture labourer. Elizabeth married Edmund Wildman and went to live in Harrow. Anne married William Rollings and was a tenant at the Hope and Anchor, Bower Lane. John, as mentioned before, died young. Another John born 6 years later married Hettie Roberts of The Rye. They lived at Moat Hall before they joined brother William in York. Louisa had 8 children. Arthur married Isobella Tolloch, an Australian, he went to London and became a policeman. On the 15th October 1905 Arthur came to his mother Kitty's funeral at Eaton Bray, he caught the flu and never recovered. He passed away on 13th January 1906 and is buried near his mum. I should also mention that John and Hettie had 13 children in York. Hettie had a small dowry which they invested in a coal merchants business at Layerthorpe, the York terminus of the Derwent Valley Railway. He sold out and bought a farm at Skipforth, Stillingfleet Hill. Mary and Jeffrey started married life living in The Rye. The house they lived in was Mr. Roberts Maltings, a house he bought in 1843 from Dunstable Brewery Co. Their 8 children were born here. Elizabeth married Ernest Wildman (you will remember her aunt was also married to a Wildman). Cecil went down on the Titanic on 24 April 1912 aged 21 years. Arthur, 1st Battalion Bedfordshire Regiment killed in action 23rd April 1917 at Flanders. He is commemorated on the Arras Memorial, Calais. Elizabeth moved to Oakley, north of Bedford and at some time worked as a nanny, travelling around the world with the family, and, at one time visited the Argentine, quite rare in those days. It was to Oakley and Elizabeth that Jeffrey finally retired to after his beloved wife Mary died in 1945.

Ethel went to Bedford and worked as a dressmaker. She later became a companion to Lady Rhoda Birley, wife of Sir Oswald Birley, the Royal Portrait Painter, returning to High Street, Eaton Bray on her retirement. I visited her in 1987.

Hettie, her twin sister, married and became Mrs. Bowley and lived in Leicester. She had two children, Arthur and Margaret.

Gertrude married Gordon Sear who was the son of Will Sear, manager of the Coffee Tavern. They lived in Luton Road, Dunstable. Mr. Sear was an insurance man. They

had two children, Patricia was born in 1932 and married a Vicar and Judith, born in 1938 became a Senior Nurse.

Gertrude was keen to keep the family name going so named her daughters - Henley Sears.

Alec married Grace Bleeny and had Pamela in 1937. His wife died and he remarried and in 1942 he had Elizabeth Ann. Alec worked for Wallace Nursery as Foreman of the water tower. He left there in 1948 and moved to Shefford. It was here he helped his wife's relatives to set up a green house business.

Eric, Alec's twin, qualified as an electrician and married and went to live in Stewartby near Bedford. He was foreman electrician for the London Brick Company until his retirement. He had two children, Beverley and Roger, Beverley died young in a road accident.

In the 1920's Mary and Jeffrey moved to 38 High Street and it was here that "Jul", as he was known, ran a greengrocers business from the yard at the rear. He would fill his pony and cart with produce and hawk it round the villages. Together with a bit of light carting, he would eke out a living. He is remembered by Maurice Sanders as being a hard working Methodist devoted to the Chapel. Maurice also mentions him in his book "Memories of Methodism" quote - "As a radical who thrilled to the tune Lloyd, and with a lusty voice, he would start up the last verse of the favourite hymn time after time until the organist could get in the Amen".

My thanks to the following people for their help. Roger and Ann Davies, Margaret Knight, Maurice Sanders and Mrs. Pamela Roberts. Without their help this tales would have been impossible.

Cheeky Monkeys Under Five's Playtime

Cheeky Monkeys would like to remind all parents that we will be having our Christmas party on 16th December. This will be a fun filled afternoon, with music, games and singing! We need to tell Santa how many presents to bring with him, so this event will be "ticket only." Therefore we are asking all parents to buy their tickets over the next few weeks. (No increase in entrance fee.) On 11th November Paula from The Book People will be selling some great books at very reasonable prices, so if you would like to buy some Christmas or birthday presents, please come along with your cash!

Our thanks this month go to the Carnival Committee for their generous donation to our group, this money will be used to upgrade our current toys and activities, and we are very grateful to them. We must also thank those parents who have been bringing in delicious home made cakes for us parents to enjoy with our tea and coffee.

Over the last few weeks the children have enjoyed our new play equipment, including a new small slide and see-saw. There have been some wonderful creations on the craft table, including Autumn collages, dinosaur pictures and teletubbies. However the highlight of the month was the "flour table", where we had a great time getting as messy as possible. Over the next few weeks we will be making monkeys, snowmen and clowns!

Cheeky Monkeys is run by three volunteer parents, Sarah, 07904 348113, Louise 07784 165259 and Sue 01525 222387 (suefox4@hotmail.com.) For enquiries please contact anyone of us.

Please see our website for lots more information: www.cheekymonkeys.btik.com

EATON BRAY VILLAGE HALL

LARGE & SMALL HALL,
MEETING ROOM, STAGE,
KITCHEN, LARGE CAR PARK

SUITABLE FOR ALL KINDS OF
EVENTS:-

- WEDDING RECEPTIONS
- CHILDREN'S PARTIES
- KEEP FIT, BADMINTON
- STAGE PLAYS ETC

TELEPHONE TO BOOK
YOUR EVENT ON:-

01525 222831
07975 797202

KEYS TO BE COLLECTED
BY ARRANGEMENT

Marc Flack

Decorating & General
Maintenance

A friendly, reliable service

Painting & Decorating

Gardening

Any other odd jobs!

Local references available

No job is too small!

10 Wivelsfield, Eaton Bray

01525 223166

Barb Carpets Ltd

Flooring at its very best

---ESTABLISHED 1976---

Domestic & commercial

Samples to Home or Site

Carpets - Vinyls - Floor levelling

Karndean tiles - Carpet tiles

Guild of Master Craftsmen
A flooring company built
on reputation over 30yrs

Call: Dave on 07850 601007

Chris on 07702 601007

Office on 01582 601007

Or find us @

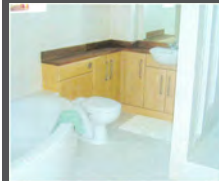
www.barbcarpets.co.uk

ASTON CLINTON INTERIORS

Kitchens, Bedrooms,
Bathrooms & Furniture

All services provided...

- Fitting
- Tiling
- Flooring
- Decorating
- Refurbishment



14 London Road, Aston Clinton,
Bucks Tel: 01442 300695

K. A. Ray Landscapers

Tel: 01525 221037
Mob: 07800 888120

For all of your commercial and domestic landscape requirements.

Professional Landscape maintenance and construction Company.

Qualifications; National Diploma in Horticulture.

As seen on ITV

RHS medal winner

As a company we specialise in:

- Garden design
- Hard landscaping
- Soft landscaping
- Quick impact garden makeovers
- Fencing
- Lawn establishment
- Lawn maintenance
- Hedge cutting

In fact we can create a fully tailor made package for each and every garden.

Contact us on :

01525 221037 k.a.raylandscapers@hotmail.co.uk **07800888120**

Free estimates and advice.

Trevor Yeardye



LUXURY BATHROOMS

**DESIGNING AND INSTALLING
BEAUTIFUL BATHROOMS IN
HERTS, BEDS AND SOUTH BUCKS
FOR OVER 20 YEARS.**

"A Family Business"

Tel - Trevor Yeardye: 01442 890835

Tel - Clifford Yeardye: 01525 220419

*Please visit our website to view our
online portfolio:*

www.trevoryeardye.com

Fresh design & cost effective marketing... it's always a Breez

Small, friendly company with a big reputation for results. We care, listen and learn about our clients and their business goals. Be blown away by positive solutions not costs.

Call 07979 945231 or email info.breez@btinternet.com

breez
design and artwork





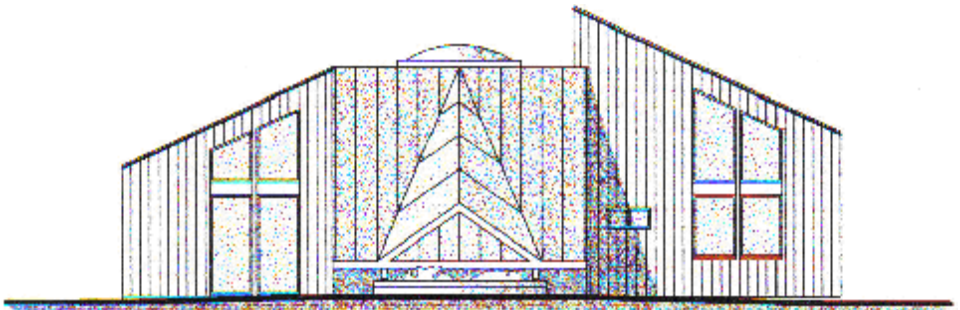
Eaton Bray Lower School

TOP MARKS!

The opening paragraph from the OfSTED inspection report, after their October 2007 visit, said this about EBLS:

"Eaton Bray Lower is an outstanding school. It modestly evaluates itself as good with some outstanding areas, but it is better than this. Its self-evaluation is correct in identifying strengths and areas for development. It provides an outstanding quality of education and care for its pupils and excellent value for money. Staff work exceptionally well in partnership with parents and the community for the benefit of all pupils. Pupils' enjoyment of school is impressive. The supportive parents are delighted with all aspects of its provision. Leadership and management are outstanding. The headteacher's vision for a school at the heart of its community is shared by the highly committed staff and excellent governors. This is set to become more firmly realised with the building of a new nursery with facilities for the local community and visiting professional from children's services."

Please come and visit our friendly village school. Phone 01525 220468 or email eaton@deal.bedfordshire.gov.uk



NOW OPEN: EBLS Nursery with extended School provision and wrap-around care in a modern, light, environmentally-aware building.
Please call at the school (01525 220468) to find out more.



Mark Janes Contacts

Felt Roofing - All Roofing Repairs
and Property Maintenance
FREE ESTIMATES



t: 01442 877528

m: 07841 343470

e: mark.janes3@btinternet.com

Established 25 years
**Approved Contractor
for Local Authorities**

CBOS

ARE YOU SELF EMPLOYED
OR RUNNING A BUSINESS?

- Complete
- Book keeping
- Office
- Support



Your one-stop shop for:

- Book keeping
- Payroll
- Sales and purchase ledger
- Management accounts
- Credit control
- Bank reconciliation
- VAT returns

Contact us at:

Wingbury Courtyard, Wingrave Bucks

Tel: 01296 681969

Email: HazelReynolds@btconnect.com

Dominic Woolcott Painter & Decorator



- Internal & External
- Plastering & Coving
- Insurance Work
- 20 Years Experience
- Competitive Rates

For a professional job call:
01525 229682 or 07747 042879

David John Harris



(Established 1992)

All Fencing Work • All Gates
Paving • Patios
Driveways • Shingle
Hedge Setting and Cutting
Grass Cutting
Turfing Specialist
Exterior Painting Service
Sheds
Small Building Work
Trees & Shrubs Supplied

Tel/Fax: 01525 221745
Mobile: 07889 143713

Abbott Flooring

- Carpet & Vinyl
- Laminate & wood flooring
- Domestic & commercial
- Supply, fitting & adaptations
- Next day delivery
- All work guaranteed
- Free no obligation quotes
- No job to small

We provide a friendly, professional service at very competitive prices. If you require us to supply & fit or you just need some flooring fitted then give us a call.

Telephone 01525 220249
Mobile 07958 244536

For all your building needs look no further



BRIGGS



BUILDING & CARPENTRY SERVICES

Established 1981

For a professional, friendly service call:

(01525) 221767

(07970) 214439

Domestic & Commercial

*Extensions
Renovations
Conversions
Alterations*

*New Builds
Roof Repairs
Kitchens
Bathrooms*

*Patios
Driveways
Decking
Garden Walls*

All work Guaranteed

Free Estimates

The Strictly Come super-Santa Apprentice Factor!

Santa has spent the year scouring the country for possible super-Elves to organise and deliver his super-letters to good and deserving children! He has had auditions, boot camps and some group dances (Santa likes dancing!).

Santa is a hard task master (even compared to Simon Cowell) and with the other judges - including Rudolf having a tantrum and Mrs Claus making it clear she isn't too old and won't be replaced – it was a trying time for the contestants, especially the task of delivering letters in the dead of night during a postal strike! But the good news is super-Santa finally delivered the verdict “You're hired not fired!” to the Four Villages very own super-Elves (who can deliver all over the country Royal Mail permitting!).

Super-Santa will send to the good children a special super-letter reassuring the child that they are definitely on Santa's list, that he knows just where they will be on Christmas morning and that he knows just what they want for Christmas.

Each letter is completely personal and is different for every child!

Calling all relatives and friends why not send the perfect pre-Christmas gift which will bring a smile to any child's face. All you have to do to join in the fun is to email super-Santa on super.santa@talktalk.net – his super Elves will then send you a super-form to fill in the child's special Christmas details. Alternatively get a copy of the form from the super-Elves direct – they are again using 96a High Street, Eaton Bray as their base this Christmas (the house between the Village Shop and the Butchers).

Then return the form to the super-Elves with £2.00 per child (or more if you want!)

by Friday 18th December in an envelope marked with the code “Village Hall Project” (the super Elves have little Elves of their own so please be discreet!).

Santa has agreed to donate all proceeds to the Eaton Bray Village Hall so roll up for a super-Santa super-Christmas!!

NORTHALL BAPTIST CHAPEL

Chapel Lane, Northall

(just beyond the speed limit signs on the road to Leighton Buzzard)

Everyone is welcome to our Sunday worship each week between 11am and 12.30pm including tea/coffee and time to talk together
For more information contact: Steve and Helen Orchard 01525 373106

There has been a Baptist Chapel in Northall for more than 200 years. Today we continue to seek to worship God, serve him in our daily lives and support and encourage one another in the difficult and the joyful times.

HOLIDAY LET

Sheplegh Court Nr Dartmouth, South Devon

Lovely two bedroomed apartment in country house set in 30 acres of gardens, woods and parkland. Facilities available include:

- Heated outdoor swimming pool with sun terrace and barbecue area (summer only)
- Conservatory overlooking the gardens and parklands
- All weather tennis court.
- Snooker room with full size table
- Small indoor pool, jacuzzi and sauna

Secluded position on outskirts of award winning village yet within 3 miles of beaches and Dartmouth Golf and Country Club. Available for weekly letting or for three plus days out of season.

**For further details please telephone
01525 220957 evenings and weekends**

Eaton Bray Methodist Church

Our Harvest week-end was a very special time. The concert by the Pasque Harmony Choir on the Saturday evening was excellent and enjoyed by a capacity audience. Our thanks go to all the Choir for their wonderful singing and to Graham Carter and John Mead for organising such a memorable evening. All proceeds from the evening have been given to the Keech Cottage Children's Hospice.

The Harvest Festival next morning was a happy family service with a guest appearance by Gary the goat, who brought along a birthday cake to share with us. At the request of the preacher, Roger Owers, many of the congregation came along with something that was "special" to them. It was amazing the variety of items that folk had, pictures, pebbles, shells, flowers, bonsai and even a tortoise to name but a few. To complete our celebrations we all sat down to a very tasty Sunday Lunch following morning worship. Our special thanks to Pearl and all the people who helped with the catering etc and all our village friends that supported us. What a wonderful week-end!

November Lunches will be served on Saturday 14th from 12 noon until 1-30pm and our charity to be supported will be the Iain Rennie Hospice at Home. Do join us and support this local charity.

Our Christmas Lunches will be served on Saturday DECEMBER 5th in 2 sittings, the 1st at 12noon and the 2nd at 1.00pm. We offer a full Christmas lunch, Christmas pudding and coffee or tea for £7.50. Tickets will be available from the 1st of November from Graham Carter on 01525 220742 or at our November Lunches. The Charity to be supported at this event will be the East Anglian Air Ambulance. A warm welcome awaits.



Table Corner

Having celebrated Pascale obtaining her NVQ2 in Professional Cookery in July, it was time to return to some serious business in the Searle household. There was a whole string of hog roasts to organise and then a couple of weddings. I just love hog roasts. They have a unique way of bringing family and friends together. Almost like a show where spectators are involved as well as intrigued by what is happening. Just to reassure you, we have not taken to lugging 50kg pigs round our beautiful village - we have teamed up with a hog roast expert whose job it is to start roasting the pig 6 or 7 hours before the event (or 3 to 4 hours in the case of lamb) and keep a watchful eye on the process. When ready it will take our expert and his extra carver less than 15 minutes to carve the hot pig and serve it with some delicious crackling. What was left for us to do? Rather a lot actually. There was the carting of buffet tables, of china plates, cutlery and glassware. Preparing of salads, desserts and vegetarian options. Plus cooking the all important stuffing and sauces. There were so many Bramley apples peeled to obtain delicious apple sauce that we couldn't face eating apples for weeks. But we fed lots of hungry guests, as well as our compost heap, which will recycle cores and peel into our garden for next year. Serious business indeed, and a little bonus for the environment too.

If you would like more advice on organizing a hog roast please don't hesitate to contact us, The Little Dagnall Catering Company on 01442 842 857 or 07900 49 8476 or check our website www.dagnallcatering.co.uk.

Salvation Sound... November 2009

When the seasons change - cold winds, damp days, frosts and mists herald the thoughts that winter is almost upon us. The witches, devils and other mischief-making beings have put away their broom sticks for another year; bonfires are now built - waiting for the starlit (hopefully) evening of fireworks and fun; the last? of the bar-b-q, foods planned - hot soup and jacket potatoes; hats, scarves and mittens, brought out to wear, - and the 'Guy' is ready to be burned. Change will either bless you or crush you, but which ever way it will be part of your life; accept it

Solomon says there's a "time to every purpose under the heaven". Ecc.3:1. Find God's purpose for the season you're in; rediscover your assets and use them. No two days are ever the same; they weren't meant to be. You will always be needed; it's just that the areas of need will change. As we get older we find that we are unable to do physically the things which even two or three years ago we did with little or no thought. Change creeps up on us. So often we allow powers to lie dormant, when with a little encouragement, they could flower and show newness of life. An example:- Take a few dead looking twigs from the forsythia bush (most of us have one growing in our gardens) place them into a vase with water in it, then watch. Soon you will see the little buds fill out and open into golden flowers, then in turn will come small green leaves. Leave them for a while and you will find that the twigs have grown roots!

You can cultivate prayer that way - water it with faith, warm it with the love within you for others, then it will grow. Try it - it will make for change.

There are not many things in this life that we can be certain of, but one of them is God's love - that is unconditional, it remains the same always.

Solomon acknowledged the cycles in our lives; God controls the cycles in our lives. Whatever our situation is today, we can be thankful for God's seasons. Sper wrote:

"Just as the winter turns to spring,
Our lives have changing seasons too;
So when a gloomy forecast comes,
Remember - God has plans for you."

Eaton Bray Village Hall

100 Club Winners - Sept 2009

183	Heather Abrams	£100
167	Robert Doody	£25
57	Honor Battley	£25
149	Tracy Greenfield	£25
11	A & J Cross	£25

Drawn on 23rd September 2009 at Eaton Bray Lower School. Please direct any correspondence to Ross Bagni, 71 Bower Lane, Eaton Bray, Bedfordshire, LU6 1RB, Telephone: 01525 221411.

The Salvation Army, Booth Place Weekly Activities

Sunday

'Footprints' (Sunday School)	9.45-10.45am
Morning Worship	11.00am
Family Worship	
3rd Sunday in month	10.30am
Songs of Praise	
3rd Sunday in month	4pm

Monday

'Champion's Challenge' Club (Age 5 - 9 yrs)	5.30-6.30pm
Junior Club (age 9+)	
(Term time only)	6.45-7.45pm

Tuesday

Coffee Morning	
Once A Fortnight	10.00 - 12 Noon
Songster and band practice	7.30 - 9.00 p.m.

Wednesday

Home League (Ladies Meeting)	2.30-3.30pm
Weekly Bible Study	7.30pm

Thursday

Parent and Toddler Group	
(Term time only)	9.30-11.30am

Thursday Evening

Ladies Fellowship	
Last Thursday in every month	7.45pm
For further details please telephone Captains Linda and Ray Charlton 01525 221156	

Dagnall Weather Station (AONB)

September was a very dry and sunny month. There was only really one day when we had any significant rain, 2nd September, then only 12.20mm = 0.56 ins fell. The temperature held up very well at a similar level throughout the month, above the average for September, but a few colder nights affected growing conditions especially the runner beans, but not quite a frost yet.

The Dagnall weather station is now live on the web with 15 mins updates from approx 0800-2200 hours each day. <http://myweb.tiscali.co.uk/dagnallweather>.

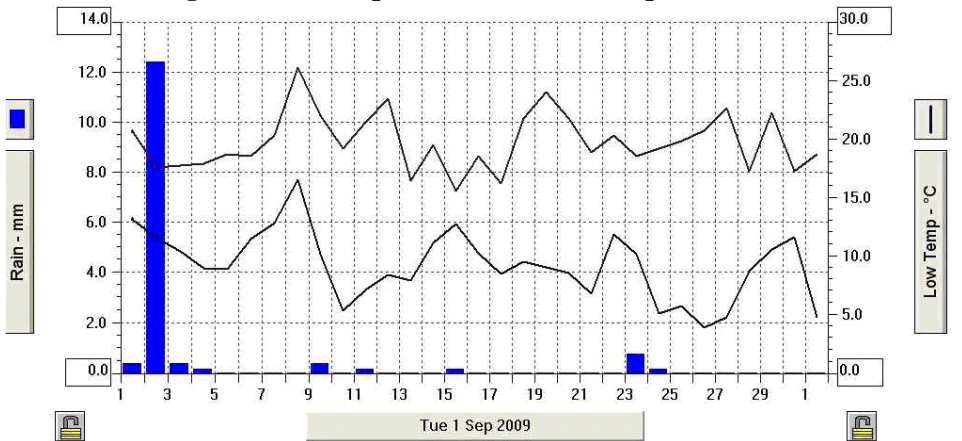
If anyone has a question, comment or wishes to contact me please email me: davidgkillick@tiscali.co.uk

Weather Conditions for September 2009

Elevation: 450 ft Latitude: 51° 50' 13" North - Longitude: 0° 33' 34" West

	High	Date/Time	Low	Date/Time
Temperature:	26.1°C	8 Sept 15.30	3.9°C	26 Sept 07.30
Mean Temperature	14.1°C			
Dewpoint:	17.7°C	8 Sept 17.00	3.0°C	26 Sept 07.00
Humidity:	96%	11 Sept 06.30	44%	20 Sept 15.30
Barometer:	1037.6 hPa	11 Sept 08.00	991.1 hPa	3 Sept 02.00
Wind Speed	34 mph SW	1 Sept 17.00	Months avg.	5.3 mph
Wind Chill:	25.3°C	8 Sept 17.30	4.1°C	26 Sept 06.30
Dominant Wind:	NE			
Rainfall *T= total rain days and moisture. R= Actual rain				
*Rain Days: 9 (T), 5 (R)	Wettest Day 2 Sept		12.20 mm	0.48 ins
Monthly Rain:	Total	Sept	15.20 mm	0.56 ins
Yearly Rain:	Total	9 Months	453.60 mm	17.85 ins

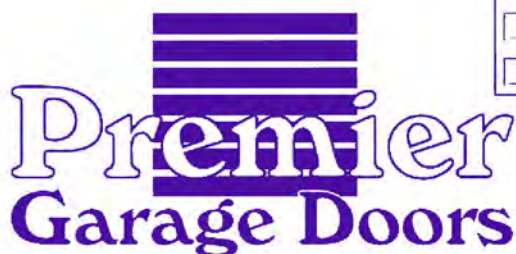
High & Low Temperatures & Rain - September 2009



Thank You

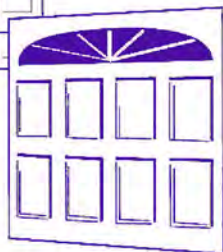
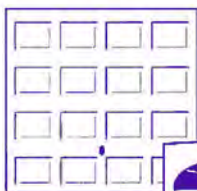
The World's Biggest Coffee Morning held in St Mary's Church on Friday September 25th was a huge success and we would like to thank everyone who contributed in any way, by baking, helping on the day or turning out to support. The total raised is £520 and still rising, a great result and this will be put to very good use supporting anyone affected by cancer and their families.





Premier Garage Doors

MANUAL & ELECTRIC



Quality Garage Doors

- ✓ SUPERB CHOICE OF DESIGNS IN METAL,
WOOD AND FIBREGLASS
- ✓ ANY SIZE DOOR MADE TO YOUR REQUIREMENTS
- ✓ LARGE SELECTION OF SPARES & FAST REPAIR
SERVICE AVAILABLE
- ✓ NEW OR EXISTING DOORS CONVERTED TO
AUTOMATIC
- ✓ PROFESSIONALLY FITTED BY OWN EXPERT
CRAFTSMEN
- ✓ PROMPT FREE ESTIMATES & ADVICE
- ✓ WE COVER ALL AREAS

- DIY KITS AVAILABLE
- INSURANCE WORK WELCOME
- COUNCIL APPROVED
- REMOTE CONTROL GATES ALSO
AVAILABLE

(EST 1984)

UNIT 7 SPARROW HALL FARM
LEIGHTON ROAD, EDLESBOROUGH LU6 2ES

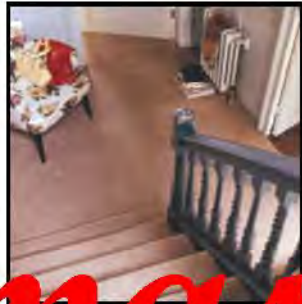
01525 220212 OR 01494 773391



Janes

carpets & flooring

Impress the In-Laws this



Christmas

Don't miss out on your fitting slot

Choose from our wide range of Carpets,
RhinoFloor Vinyl, Parador Laminate & Woods,
Quickstep & Karndean Flooring



- No Obligation Quote
- **Takeaway Samples**
- Wide Choice of Products
- In House Fitters
- Uplift & Disposal Service

4-8 High Street, Edlesborough, Dunstable, Beds LU6 2HS
Tel: 01525 220208 Fax: 01525 222802