

# FOCUS

July 2014



The local village magazine just for Us!  
Eaton Bray, Edlesborough, Northall & Dagnall

# *The White Horse Inn at Eaton Bray*

Market Square  
Eaton Bray  
Beds  
LU6 2DG  
01525 220 231

[www.thewhitehorseeatonbray.co.uk](http://www.thewhitehorseeatonbray.co.uk)



***Proud supporters of the carnival  
and Eaton Bray village  
beautification scheme***



*Great food in  
a lovely pub*

# Focus Magazine Committee

**Joint Editor:** George Crutcher

7 Summerleys, Edlesborough 221637

**Email:** [george.crutcher@tiscali.co.uk](mailto:george.crutcher@tiscali.co.uk)

**Joint Editor:** Sally Siddons

34 Wallace Drive, Eaton Bray 221733

**Email:** [sallysid@hotmail.com](mailto:sallysid@hotmail.com)

**Dagnall Representative:** Sue Cawdell

10 Deans Meadow, Dagnall 01442 842200

**Circulation Manager:** John Plater

41 Church Lane, Eaton Bray 221095

**Treasurer/Leaflet Enquiries:** Ken Coates

10 The Nurseries, Eaton Bray 220868

**Advertising:** Sally Siddons

34 Wallace Drive, Eaton Bray 221733

**Design and Layout:** Tracey Moren

(Moren Associates Limited) 01525 229695

**Printed by:** PRIORITY Press

Dunstable 01582 699851

Copy for publication to the Editors or one of the following by the **10th of the month:**

Kevin Cabbage

'Larums', Eaton Bray Road, Northall

Val Barrow

3 Chestnut Close, Dagnall

*Focus accepts no responsibility as to the accuracy or content of any advertising or articles published in 'this' magazine neither do they reflect the opinion of members of the Committee.*

© Articles published in Focus may not be reproduced without permission.

**August Focus will be a joint issue for August & September. Don't forget to send in your August & September entries by 10th July**

## Kindly Note

If the event you wish to advertise falls in the first week of the month, it is advisable to get the details into Focus a month earlier. The magazines are not delivered from the printers until the first of the month, therefore it takes a few days for them all to be circulated throughout the village.

✉ Editors

## Village Hall Bookings

To book your local village hall for an event please contact the following:

**Northall:** Lorna Cabbage Tel: 01525 220361

**Eaton Bray:** Norman Lee Tel: 01525 222831

**Dagnall:** Elizabeth Coates Tel: 01442 842550

**Edlesborough Memorial Hall:** Penny Pataky, Tel: 01525 229358

## Police Contact Numbers...

*making neighbourhoods safer together*

**General Assistance (Recommended Number): 101      Emergency: 999**

**Bedfordshire Police (Eaton Bray)**

Leighton Buzzard Police Station/Kathryn Horgan: 01582 473418

Typetalk: 18001 01582 473418

Email: [LPT.LeightonRural@bedfordshire.pnn.police.uk](mailto:LPT.LeightonRural@bedfordshire.pnn.police.uk)

**Thames Valley Police (Edlesborough, Dagnall & Northall)**

PCSO Jackie Dodson Mobile: 07800 703 524

Email: [NHPT@thamesvalley.pnn.police.uk](mailto:NHPT@thamesvalley.pnn.police.uk)

# Village Diary July 2014



## Weekly

- Mon-Fri (term time) Eaton Bray Pre-school, Eaton Bray Lower School, 01525 220468
- Mon-Fri (term time) Dagnall Under 5's, Dagnall Village Hall, 9.15am - 12.15pm, Mrs Ann Tobin 07816 358342
- Mon-Fri (term time) Edlesborough Pre-School, Edlesborough School, 01525 220431  
manager@edlesborough.bucks.sch.uk
- Mon-Thu (term time) Totternhoe Pre-school, mornings, Totternhoe Lower School, Ellie Deeley on 07913 529574
- Mondays Pilates, 10.45am, St.Giles Church Hall, Totternhoe, Lisa: 07799 893489
- Mondays (term time) 2nd Eaton Bray Brownies, girls 7-10 years, Edlesborough Memorial Hall, 6 - 7.30pm,  
Contact Sandra Counsell 07979 521900
- Mondays Dagnall Community Choir, All Saints Church 7.45 – 9.45pm
- Mondays Weight Watchers, 7pm, Eaton Bray Village Hall
- Mondays (term time) Movement and exercise classes with a dance flavour, Northall Village hall 2-3.30.  
Contact Jan 01442 864271.
- Mondays Curtain Call Youth Theatre 5-7.30pm, Eaton Bray Village Hall, Gavyn 01525 220525
- Mondays Curtain Call Theatre Group - 7:30-10:30pm Eaton Bray Village Hall, Sheila -  
sdtwinkletoes@yahoo.co.uk
- Mondays KFFPA ISTD Classical Ballet classes, 3+yrs, 4.15pm, Edlesbrough Memorial Hall,  
www.kfpa.co.uk
- Tuesdays Line Dancing, 1.30-3p.m., Eaton Bray Village Hall, Lyn Stubbs 220731
- Tuesdays Pilates, 10-11am, Eaton Bray Village Hall, Nicky Roussou 07861 162680
- Tuesdays Totternhoe Baby & Toddler Group, 9.30-11.30am, St. Giles Church Hall, Ruth Allen,  
01525 222468 or 07796 265174 or email ruthallen002@gmail.com
- Tuesdays Northall Baby & Toddler Group, 9:30-11:30am, (open in the Summer School Holidays)  
Northall Village Hall, Stacey Richmond 01525 222999/07957 607592
- Tuesdays Tap & Ballet Classes, JoAnn Latus School of Dance, 4-8pm, Eaton Bray Village Hall,  
01582 620576
- Tuesdays Circuit Training - Edlesborough School Hall, 7-8pm - www.simplesfitness.com
- Tuesdays Coffee Morning, Bring & Buy, Table Top Sale, 10-12noon, Salvation Army Hall,  
Booth Place, Eaton Bray
- Fortnightly Cheeky Monkeys Under 5's playtime, 1pm - 2.45pm, Eaton Bray Village Hall, contact  
Rachel on 07789 760007
- Weds (term time) Pilates, 7.15pm, Northall Village Hall, Lisa: 07799 893489
- Wednesdays Egyptian Dance Class, 7.30-8.45pm at Eaton Bray Village Hall. Contact: Soraya on  
07976 964316 for more details
- Wednesdays Northall & District Age Concern Wednesday Club, 10am - 3pm, Northall Village Hall,  
Contact Anna 221996
- Wednesdays Dynamic Yoga 6.30-7.30pm £5 Eaton Bray Coffee Tavern Keira 07936 693696
- Thursdays Yoga, Northall Village Hall, 11.30am-1pm 01525 377542
- Thursdays Baby & Toddler Group, Salvation Army Hall, Booth Place, Eaton Bray, 9.30-11.30am
- Thursdays Keep Fit, Edlesborough School, 8pm Tel: 01582 668735
- Thursdays Jazzercise, 9.30-10.30am, Eaton Bray Village Hall, Angela Veryard, 01525 715208
- Thursdays KFFPA Street dance classes 4+yrs 4pm, Edlesborough Memorial Hall, www.kfpa.co.uk
- Thursdays (term time) Northall School of Dancing classes between 3.30pm and 6.30pm. Contact Nicola  
Bisson on 01525 406647
- Thursdays Fortnightly Central Bedfordshire Children's Centres' Toy Library, 9-9.45am, Eaton Bray (School  
Lane) Public Car Park
- Fridays Keep Fit class, Edlesborough Memorial Hall 10 - 11am
- Fridays Tap & Ballet Classes, JoAnn Latus School of Dance, 4-8pm, Eaton Bray Village Hall,  
01582 620576

# Village Diary July 2014



- Fridays (term time) 10am-11.30am "Little Luvvies" baby ballet classes. Contact Emma Whittemore on 01525 376124
- Saturdays Jazzercise, 9.30-10.30am, Eaton Bray Village Hall, Angela Veryard, 01525 715208
- Saturdays Drama Class for Children, 10.35am-12.35pm, Eaton Bray Village Hall, Claire Casey, 07792 508591
- Saturdays KFPA Musical Theatre classes 4+yrs www.kfpa.co.uk, 10am, Edlesborough Memorial Hall
- Sundays Grace Baptist Church (by the Post Office) Worship Service 11am-12pm. All welcome. Barry 01525 229610 or Peter 01525 221048.

## Monthly

- 1st Monday Eaton Bray Parish Council Meeting, 7.30pm, The Coffee Tavern
- 1st Monday Eaton Bray W.I. Meeting, 7.30pm. Eaton Bray Methodist Church Hall. Contact Barbara Collier on 01525 221401
- 1st & 3rd Tuesday Dunstable & District Orbit (social and charitable) Club meet at Dunstable Rugby Club at 8pm. For details contact 01525 222441 or 01582 755147
- 1st Saturday St. Mary's church, Eaton Bray Coffee Morning & Plant Sale, 10am - 12 noon
- 1st Sunday May to September, St Mary's Church, Edlesborough Open Day, 2-5pm
- 2nd & 4th Tuesday TOTS, St Mary's, Eaton Bray, 2pm
- 2nd Tuesday Dunstable & District Local History Society meeting, 7.45pm, Methodist Church Hall, Dunstable (opposite Wilkinson)
- 2nd Tuesday Edlesborough W.I. Meeting, 7.30 pm, Edlesborough Memorial Hall
- 2nd Wednesday St.Mary's Ladies Guild, 2pm, St.Mary's, Eaton Bray
- 2nd Wednesday Eaton Bray & Edlesborough Lions Club, 7.30pm, The Coffee Tavern
- 2nd Thursday CAMEO Coffee, tea & chat, 10am-12noon, Edlesborough Methodist Church
- 2nd Saturday Workshops Dynamic Yoga 9.30-11am £10 Eaton Bray Coffee Tavern Keira 07936 693696
- 3rd Thursday Edlesborough Parish Council Meeting, 7.30pm, Memorial Hall
- 3rd Sunday Lunch club 11.30 to 2.00pm, Eaton Bray Village Hall, Chris Hewitt 222288
- Last Saturday Coffee Morning, 10-12 noon, Edlesborough Methodist Church

## Other Regular Events

- 6th Beds Area Narrow Gauge Model Railway Club Meeting, 11.30am-4.30pm, Eaton Bray Village Hall
- 11th Leukemia Research Coffee Morning, 2 Dunstable Road, Dagnall 10.30 am. All welcome.
- 15th Dagnall Over 60's Annual Garden Party at 1, Chestnut Close, Dagnall
- 28th ELF walk from Eaton Bray Church 10am

## One Off/Annual/Irregular Events

- 5th St Mary's Village Carnival and Fete, Edlesborough Green
- 7th Auditions for Curtain Call's production of Jack and the beanstalk, 8pm - Sheila - sdtwinkletoes@yahoo.co.uk
- 12th Classical Guitar Concert, 6:30pm, St. Mary's Church, Studham, Free admission
- 13th Northall Village Hall AGM, BBQ and Fun Day, Noon, Adults £3, Children £2. Tickets Sarah 221186
- 17th ELF Meeting, 10.30am, The Coffee Tavern
- 19th Summer Party, 7:30 to midnight, Edlesborough School, Tickets: £15 223087
- 19th Ben Treacher Jazz Quartet, 7.30, Pitstone Memorial Hall, Tickets 01296 668094



**EDaN Community Transport**

Peter Williams: 01442 842506

*Cover photo by  
Claire Thorne*

# Village Notices

## FOR SALE

**Mobility Scooter**  
**Ultralite Mobility. New batteries,**  
**good condition.**

**No longer able to use it**  
**Please call for more details and you**  
**are welcome to come and try it out**

**£315**  
**Tel 07734 111654**

## DAGNALL ENTRIES FOR THE FOCUS

With immediate effect would **Dagnall** contributors to Focus please send their entries, diary dates etc. direct to Sally Siddons whose e-mail address is on page 4 of the magazine.

Anyone with problems with emailing please contact Sue Cawdell 01442 842200.

## Beer Festival May 30th & 31st 2014

Again I write for Focus, following on from what can only be described as another great Beer Festival.

I can go on about the weather, weren't we lucky again, the entertainment, again brilliant both the singers played to very enthusiastic audiences and Smartie Artie, who enthralled the younger ones on Saturday afternoon, but it is always about the beer.

This year, Roy Chatto and his friends from CAMRA, provided 30 barrels of beer plus 3 ciders and a perry. This was all cooled down beautifully by a very efficient system lent to them by Tring Brewery. On Friday, 28 of those beers were ready to drink and a 29th was ready for Saturday (sadly one barrel never made it!). By the end of Friday evening it was decided to get 2 further barrels of "bright"\* beer to make sure we did not run out.

So by the end, on Saturday, we had about 10 barrels with a little left in each and the rest had been happily consumed by our visitors. We had done it, sold most of the beer and lasted until 11 pm on Saturday, a great sigh of relief went up from us all.

On top of that we had record numbers through the door and sold more food than ever before.

The Village Hall fundraisers want to thank all of you for coming and for the many compliments we received. Just seeing people enjoying themselves makes all the hard work worthwhile.

As usual, we really need to thank the folk from CAMRA for all their hard work, without which we could not have this event.

We however have an issue going forward and that is the lack of helpers. All of us who started running the Beer Festival in 2004 are obviously 10 years older and finding it tough going, so do any of you know of an organisation who would like to become part of our festival, or even an individual. We really need to hear from you to ensure that this great village event can carry on into the future.

Again our thanks to you all for your support.

Ross (221411)

\*Not sure what that is but doesn't need to settle.

# Edlesborough Fun Run

The morning of Saturday May 17th came. The cakes were baked, medals ready to hand out and bunting hung, even the sun made an appearance and it was a perfect day for running.



day was to have FUN. The cakes at the finish line were delicious and everyone came together on the green to enjoy some refreshments and be presented with their medal. The community spirit

The Great Edlesborough Fun Run saw 50 entrants from Edlesborough and the surrounding areas meet on the village green to take part in an amazing local event with all proceeds going straight to Watford based charity, Playskill.

**Edlesborough Runners**, who are based in the village decided to hold a charity event which would combine their love of running, and at the same time, give something worthwhile back to the community. As it was the first event of its kind that the group had organised, they had no idea quite how successful the day would become. All fifty entry places sold out with a week to go and the group were overwhelmed by the support of local businesses and residents. Many people who lived along the route decorated their houses with bunting and came out to cheer on the runners as they made their way through the village. Janes on the High Street decorated their shop front and also had two members of staff out running. Huge thanks go to Berkhamsted Sports

who showed fantastic support by not only sponsoring the event but also providing the superb raffle prize of a pair of trainers with a complete gait analysis. The Fun Run itself consisted of a 5K route around the village, starting and finishing on the green.

who showed fantastic support by not only sponsoring the event but also providing the superb raffle prize of a pair of trainers with a complete gait analysis. The Fun Run itself consisted of a 5K route around the village, starting and finishing on the green.

All ages and abilities took part and the main aim of the

was alive and well with many smiling, but exhausted, faces! Prizes were given out to the first man and woman to come home and also first child. Special thanks went to the front runner and back runner who made sure everyone stayed safe and on track.

The total amount raised for Playskill has now reached a staggering £1400 (£1608.75 inc Gift Aid) and the Fun Run organisers would like to thank all runners and everyone involved for the kind support and generosity in making this happen.

After the success of this event, an autumn Fun Run is now being organised. Watch this space for further details!

If you would like to join Edlesborough Runners, find them on Facebook and join the group. Alternatively, you could ring 222049 for further details. All abilities are welcome, there's no charge and if you are completely new to running they hold regular beginners sessions. What are you waiting for?

✍️Carole Crookes



*Photos by Susan and David Hill*

## Services at St Mary's Church

**SUNDAYS :**    **8.00am**    HOLY COMMUNION  
                  **10.00am**    PARISH SUNG HOLY COMMUNION

**On Third Sunday of each month:**

**10.00am** – WORSHIP FOR EVERYONE a shorter, less formal service for families. (For anyone wishing to attend a service where Holy Communion is offered, there is a Family Communion at 10.30am at All Saints' Church, Dagnall, where visitors are assured of a warm welcome).

**WEEK-DAYS:**

**Tuesday:**    **2.00pm**    TOTS (Tots on Tuesdays) (2nd & 4th Tuesdays)

**Wednesday:** **10.00am**    Holy Communion

*EVERYONE WELCOME AT THESE SERVICES*

## St. Mary's Village Carnival

5th July 2014



July has arrived and the Carnival is upon us!

If you receive Focus before Saturday 5th it is still not too late to lend a hand with the Friday evening/Saturday morning organization. On Friday evening there will be a fleet of lorries and vans crisscrossing the villages collecting tables, chairs, tents and all manner of equipment ready for the Saturday. On Saturday morning this equipment descends on Edlesborough Green to be unloaded and maneuvered around the Green by volunteers; without this help the Carnival does not happen. If you can lend a hand on Friday evening or Saturday morning call Gordon Gray whose number is at the end of this article. There are egg and bacon rolls and tea/coffee waiting for all those who can help out on the Green on Saturday morning from about 7 a.m. 'til 10. Or to put it another way in the theme of this year's carnival:

**Help, I need somebody**

**Help, not just anybody**

**Help, you know I need someone, he-e-elp**

**When I was younger, so much younger  
than today**

**I never needed anybody's help in any way**

**But now these days are gone, I'm not so**

**self-assured**

**Now I find I've changed my mind and  
opened up the doors**

**Help me if you can, I'm feeling down**

**And I do appreciate you being 'round**

**Help me get my feet back on the ground**

**Won't you ple-e-ase, please help me**

And remember, not only do you get the song but a huge breakfast roll into the bargain!

If you receive Focus after Saturday then I hope you had a fine time and that the weather was fair for all of us!

Whether you were able to lend a hand or not; make sure you have a great day and best wishes to all those involved in decorating and participating in carnival floats, dressing up for the day and to all families decorating their houses in the village.

For any last second enquiries on how you can get involved with this year's **musical** Carnival contact: Gordon Gray 01525 220136

**See (and hear) you on the Green!**

**Music**





# A Letter from Rev'd Coralie

Vicar: Coralie McCluskey

The Vicarage, 11 High Street, Eaton Bray - Tel: 01525 220261

Honorary Assistant Priest: Revd John Heffer

Reader: Gordon Gray (220136)

Church Warden: Catherine Hayden (220527)

Parish Administrator: Elisabeth Ryder (07799 494972)

Web contact: [eatonbraychurch@aol.com](mailto:eatonbraychurch@aol.com)



Cast your minds back to the May edition of FOCUS. I committed myself to “Live below the line”, between the 12th and 16th May. I was to spend no more than £5 on food and drink that week and was not allowed to use what I already had in the kitchen cupboard. I achieved my aim, was not hungry but it was boring: lentils, tinned tomato, bread, a couple of onions, rice, 2 eggs and lots of water. I did use mint growing in the garden for peppermint tea. Meat, fish and dairy products were off the menu as well as fresh fruit and salad. On top of all that I did wonder how I’d feel if I didn’t have a fresh water supply. We forget that many people living way below the poverty line are not just hungry but have a poor water supply that increases the risk of illness and dehydration. I’m glad I did it and it certainly helped me reflect upon the enormous gap between my life and the lives of many who live in poverty throughout the world.

Moving on to July

Sunday 13th July is Sea Sunday when churches and communities come together to remember seafarers and pray for them, their families and those who support them. The Mission to Seafarers provides vital welfare services to those who risk their lives at sea. Did you know that over 90% of all goods that we could not live without including food, fuel, raw materials, clothes and household goods are transported by ship? Thousands of seafarers are abandoned on ships every year without pay, and often with no clean water, food or fuel. Since the 2008 world financial crash, this problem has increased hardship and suffering for seafarers all over the world. If you are interested in finding out more visit their website: [www.seasunday.org](http://www.seasunday.org)

School children begin their summer holiday towards the end of the month and many of you will be heading off for a break. I hope it will be a time of relaxation and refreshment for all - with fewer deadlines to meet. I hope too that all those teenagers waiting for examination results will be successful.

**A prayer for all those on holiday this summer.** Thank you for the refreshment which a holiday brings to our lives; for the excitement of anticipation and planning; for the freedom from routine, and for new experiences and opportunities.

*Coralie*

# All Saints' Church Dagnall

## Services in July 2014

Sun. 6th July	9.00 am	Eucharist
	10.30 am	Morning Service
Sun. 13th July	10.30 am	Morning Service
Sun. 20th July	10.30 am	Family Communion
Sun. 27th July	10.30 am	Family Service
Sun. 3rd Aug.	9.00 am	Eucharist
	10.30 am	Morning Service



Sunday School meets each Sunday at 10.30 am except when there is a Family Service.

## EDaN Community Transport Scheme



This service is available for residents in Edlesborough, Dagnall and Northall who are struggling with local public transport. We have a team of volunteer drivers from these 3 villages who are willing to give up their time to help others in need of this service. These drivers provide a door to door service, eg, they will take you to your appointment and then return you home. We only charge the cost of the fuel and parking charges if applicable. The mileage rate we are using is 40p per mile and we have £1 admin fee to help with insurance etc. Some charges may be refunded for certain people, please enquire for further details if you need more information on this. Our drivers only receive this cost of their fuel, they give their time for free!

Ideally we need 48hours notice of a trip, but there are emergency medical appointments that we may be able to do a shorter notice if required.

We can take you shopping, to visit friends, the trip doesn't have to be medical, although this is our first priority if we were short of drivers.

There are some truly remarkable people living in our villages and we are very lucky to have them.

Over the summer period, many of our drivers will be taking their annual holiday,

so if you have been thinking about volunteering to drive for us, now would be a very good time to offer your services. If you would like to know anymore about Community Transport or volunteer to be a driver for us, please give me a call, **Kathy Bovington on 01442 842796 or 0779 0537032.**

Alternatively, if you would like to book a trip, please call **Peter Williams our co-ordinator on 01442 842506** who will be happy to arrange this for you.

✉Kathy Bovington

EDaN Community Transport



### NORTHALL BAPTIST CHAPEL

Chapel Lane, Northall

(just beyond the 30 speed limit signs on the road towards Leighton Buzzard)

Everyone is welcome to our Sunday worship each week between 11am and 12.30pm including tea/coffee and time to talk together.

For more information contact:

John Hazell 01525 218142

Email [northallchapel@btinternet.com](mailto:northallchapel@btinternet.com)

There has been a Baptist Chapel in Northall for more than 200 years. Today we continue to seek to worship God, serve him in our daily lives and support and encourage one another in the difficult and the joyful times.



# UNICORN WINDOWS LTD

“WHERE QUALITY & SERVICE ARE NOT A MYTH”

[www.unicornwindows.co.uk](http://www.unicornwindows.co.uk)

**Tel: 01525 854272**



Unit 3 Youngs Industrial Estate, Stanbridge Road, Leighton Buzzard

**comput@mation**  
computer support & services

## Computer Support for Business & Home

### Problem Solving:

Virus & Spyware Removal  
Internet & Email Assistance  
Fault Diagnostics  
Repairs & Upgrades  
Slow Running PC's

### Sales:

Desktops, Laptops & Tablets  
Printers & Peripherals  
Software

### Services:

PC, Mac & Linux Support  
Wired & Wireless Networks  
Data Recovery  
Install & Set-up  
Health Checks

On-site Visits:  
Office Hours & Evenings  
by appointment

For friendly advice call John Wallace: 07968 536068 or 01525 261381  
Email: [john@computamtion.co.uk](mailto:john@computamtion.co.uk)  
Web: [www.computamtion.co.uk](http://www.computamtion.co.uk)

Computamtion Services Ltd - Est.1999 with over 25 years experience  
9a Lower Way, Great Brickhill, Buckinghamshire, MK17 9AG

# Carpet & Upholstery Cleaning

**Professional & Local**

**All work guaranteed - not happy, don't pay**

**Powerful equipment means drier much quicker than other methods**

**100% Guaranteed no chemicals left in carpet when dry therefore will not easily resoil & perfectly safe for children & pets**

**Recommendations account for 90% of my work**

**Absolutely no hard sell**

**Telephone Colin for a Free Quote**

**DEEP-CLEAN**

**01525 851 811**

**[www.deep-cleaners.co.uk](http://www.deep-cleaners.co.uk)**

**Email: [colin@deep-cleaners.co.uk](mailto:colin@deep-cleaners.co.uk)**

## **EDLESBOROUGH SURGERY**

**11 Cow Lane Edlesborough**

**Enquiries - 01525 221630 Appointments - 01525 220333**

**[www.edlesboroughsurgery.co.uk](http://www.edlesboroughsurgery.co.uk)**

**Dr J R Bell, Dr Tisha Patel**

**Dr Stephanie Johnston, Dr Kirsten Riemer, Dr Heather Counsell**

**Friendly village Practice offering a wide range of health services including coils/implants, minor surgery, travel advice, in house blood tests, on-line appointments and repeat prescription ordering. Four Nurse Practitioners offering acute clinics with same day appointments. Also, midwife, health visitors in attendance. Local District Nurse Service.**

**Long established training Practice with a rotation of qualified doctors.**

## **EDLESBOROUGH PHARMACY 01525 223181**

**Pharmacist – Mitul Patel**

**Friendly reliable professional service at the pharmacy**

**All doctors/dentists/veterinary and hospital prescriptions dispensed**

**Professional advice always available**

**Herbal/Homeopathic products**

**Special Orders on request**

**Stagecoach Theatre Arts**  
 An hour to sing, an hour to dance, an hour to act... A lifetime to Perform!

Please contact the Principal, Wendy Ashman  
**01442 823181**  
 leightonbuzzard@stagecoach.co.uk  
 www.stagecoach.co.uk/leightonbuzzard  
 www.facebook.com/stagecoachleightonbuzzard



**SING! DANCE! ACT NOW!**



Theatre Arts Schools  
**Stagecoach**



**MMH**  
**Plumbing & Bathrooms**



**City & Guilds**  
 Qualified

- Full Bathrooms Installations inc Design, Supply, Tiling
- All General Plumbing work from : Leaking Showers  
 Dripping Taps • Toilets not flushing • Radiators • Drains

Call Mark for a **FREE** no obligation quote **01525 220994**  
 All work fully insured and guaranteed. **07842 653832**

**Barry Cato**  
**Motor Repairs**

— Est. 1981 —

*Servicing, repairs and MOT's arranged*  
**Workshop at:**  
 r/o Norfolk House Farm, Harling Road  
 Eaton Bray, Dunstable, Beds, LU6 1QY  
**Tel: 01525 221681 (workshop)**  
**07836 650015 (mobile)**

**30 Years Experience**  
**Domestic & Commercial Security**



**Burglar Alarms**  
**Redcare Monitored Systems**  
**Intercoms**  
**CCTV**  
**Access Systems**  
**Locks**



CERTIFICATE NO. NAC/G/2113

**Quality Installations – Competitive Prices**  
**Insurance Approved** **Free Surveys**

**AAA SECURITY**

**01525 378222**

Email: [sales@aaasecurity.co.uk](mailto:sales@aaasecurity.co.uk)

[www.aaasecurity.co.uk](http://www.aaasecurity.co.uk)



# janes

Electrical Appliances, Bikes & Flooring Store

The Family Business with 130 years of recommendation



## Free Delivery & Installation

**On Kitchen Appliances & TV's**

within a 15 mile radius (excluding installation on Gas & Built-in Appliances)

## Sound Advice & Peace of Mind

4-8 High Street, Edlesborough, Dunstable, Beds LU6 2HS

Tel: 01525 220208 Fax: 01525 222802

[www.janesltd.co.uk](http://www.janesltd.co.uk)

# *Dominic Woolcott*

## Painter & Decorator



- Internal & External
- Plastering & Coving
- Insurance Work
- 20 Years Experience
- Competitive Rates

**For a professional job call:  
01525 229682 or 07747 042879**

# P. DYER ELECTRICAL

*For all your Electrical & Testing & Inspection needs*

- Re-wires
- Testing & Inspection
- Security Systems/Lighting
- LED & Low Energy Lighting
- Decorative Lighting
- PAT Testing
- Fuse Boards
- Fault Finding/Repairs

Fully insured, Part P registered, all work guaranteed.  
Fast, friendly, reliable, local electrician. For a free,  
no-obligation estimate, call Paul on:



**Tel: 01525 222109**  
**Mobile: 07850 682815**



David John Harris



(Established 1992)

All Fencing Work • All Gates • Paving • Patios  
Driveways • Shingle • Hedge Setting and Cutting  
Grass Cutting • Turfing Specialist • Exterior  
Painting Service • Sheds Small Building Work  
Trees & Shrubs Supplied

**Tel/Fax: 01525 221745**  
**Mobile: 07889 143713**

## WASHING MACHINE REPAIRS

ALSO  
DISHWASHERS, TUMBLE DRIERS,  
AND ELECTRIC COOKERS



Call  
**ANDERSON D.R.S.**

**01582 665764**

[www.andersondrs.co.uk](http://www.andersondrs.co.uk)  
SALES AND RENTALS AVAILABLE



## GYM & TONIC

WANT TO GET FIT, HAVE A  
HEALTHIER LIFESTYLE & IMPROVE  
THE WAY YOU LOOK & FEEL?

The following can be provided in our  
Gym in Edlesborough or in your home

- \* A Health & Fitness Consultation \*
- \* Personal Training \* Massage \*

Ruth Anderson Dip. PT & ST, Member of: Inst of Sports  
Therapists & Register of Nutritional Therapists

**Tel:01525 223074 Mob:07812 163979**



For all your painting & decorating requirements  
 Domestic and Commercial  
 call Max for a free estimate with no obligation  
[maxbro@btinternet.com](mailto:maxbro@btinternet.com)

## Abbott Flooring

- Carpet & Vinyl
- Laminate & wood flooring
- Domestic & commercial
- Supply, fitting & adaptations
- Next day delivery
- All work guaranteed
- Free no obligation quotes
- No job to small

We provide a friendly, professional service at very competitive prices. If you require us to supply & fit or you just need some flooring fitted then give us a call.

Telephone 01525 220249  
 Mobile 07958 244536



# High Street Hair

66 High Street , Eaton Bray, Nr Dunstable, Beds. LU6 2DP

**01525 221252**

[www.highstreethair.co.uk](http://www.highstreethair.co.uk)

Monday	Closed
Tuesday	9 - 6
Wednesday	9 - 6
Thursday	9 - 8
Friday	9 - 8
Saturday	9 - 5

A Professional modern salon, Providing  
 Quality hair & nails services for the whole family.



JESSICA



TIGI®



think car, think...

# smartAUTOGROUP



Established locally for over 10 years

Car servicing, M.O.T & repairs  
Bodywork & maintenance  
Mobile car body repairs  
Accident & vandalism damage  
Alloy wheels, scratches, dents, stone chips & scuffs  
Fully equipped bodyshop & workshop  
Complete diagnostic equipment  
Dealer trained master technicians  
Genuine parts



Competitive pricing – up to 50% cheaper than main dealers!

## £10 off with this advert

Work Guaranteed • Free Vehicle Collection & Delivery • Customer Pick-Up & Drop-Off

Call us on **01582 664772** or visit [www.smartautogroup.co.uk](http://www.smartautogroup.co.uk)

Units 17 & 18a, Icknield Way Farm, Tring Road, Eaton Bray, Dunstable LU6 2JX



# Lee Hutt

Heating & Plumbing Services

Bathrooms, Design & Installation

Tiling ♦ Heating ♦ Powerflushing ♦ Taps ♦ Leaks

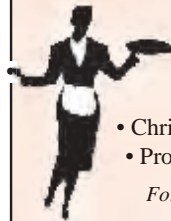
Call Outs ♦ Free Estimates Given



01525 222145



07971 559185



### Patricia's Cuisine

Catering For All Occasions

- Buffets, Dinners •
- Christenings, Weddings, Funerals •
- Promotions & Business Lunches •

*For Enquiries & Menu*

Meadside Farm, 104 High Street,  
Eaton Bray, Bedfordshire, LU6 2DP

**Telephone: 01525 222174**

## P.J.BRINKLOW

### Electrical Contractor

**01525 220469**

**07860 781330**

**43 Peblemoor  
Edlesborough**



# Domestic & Commercial Cleaning Service

- Fully Insured
- Family Business
- Free Quotes
- References Available
- Rental Cleans

Also Carpet Cleaning with the new  
Therma dry cleaning system -  
Cleans, Disinfects, Deodorises and  
Protects in one application  
Carpets dry 15 to 30 minutes

Tel: 01296 624837  
Mob: 07909 934168 / 07796 406717  
[www.spotlessofaylesbury.co.uk](http://www.spotlessofaylesbury.co.uk)

## Mark Janes Contracts

Felt Roofing - All Roofing Repairs  
and Property Maintenance  
*FREE ESTIMATES*



t: 01442 877528

m: 07841 343470

e: [mark.janes3@btinternet.com](mailto:mark.janes3@btinternet.com)

Established 25 years

*Approved Contractor  
for Local Authorities*

*For all your building needs look no further*



# BRIGGS

## BUILDING & CARPENTRY SERVICES



Established 1981

For a professional, friendly service call:

**(01525) 221767**

**(07970) 214439**

### Domestic & Commercial

Extensions  
Renovations  
Conversions  
Alterations

New Builds  
Roof Repairs  
Kitchens  
Bathrooms

Patios  
Driveways  
Decking  
Garden Walls

Mini Digger, Skip Loader and Dumper Hire

All Work Guaranteed

Free Estimates

# Appledown's Rescue Dog of the Month



Introducing Kiwi, a handsome crossbreed aged about two years. He was found in Luton suffering from a neck injury due to an embedded collar. In spite of this, Kiwi loves people and is also good with other dogs.

Kiwi tends to be rather boisterous and will need owners who are willing to carry on with the training he is receiving with us. In the right home, Kiwi will make an affectionate and rewarding companion. If you feel you could offer Kiwi, or any of our other dogs, a loving and secure

home please call in at the kennels any day between 10 a.m. and 4 p.m. Our staff will be happy to offer advice and information. Please note that we have restrictions on rehoming dogs to families with children under 7 years of age, so please ask for details.

Appledown Rescue and Rehoming Kennels, Harling Road, Eaton Bray, Beds LU6 1QY.

Call 01525 220383 or e-mail [appledown.kennels@btinternet.com](mailto:appledown.kennels@btinternet.com)  
(Reg Charity No. 1116848)

## Edlesbray Leisure Fellowship (ELF)

Hello Everyone,

When you read this, mid-summer day will have passed. We hope that you are enjoying the warmer weather, and taking advantage of it whilst it lasts.

Those members of the ELF group who went on the Lunch Outing to The Swan at Northall on May 8th enjoyed the venue and the food.

On May 19th, the walk was led by Brian W. at Ashridge Forest and, as an experiment, it included a short, easier stroll for those members with limited walking abilities. This was a great success, the easier walkers strolled, at their own pace along the Buggy track and returned to the café for a short coffee break. They then had another short stroll and returned back to the visitor centre where they met up with the longer walkers who had taken a circular route to Berkhamsted Common and back. A very welcome refreshment break was then enjoyed by all who took part and it was hoped that there would be further occasions when this could take place.

On Thursday May 22nd, the visit to the

Chiltern Open Air Museum was a great success and very interesting. Thanks to Audrey for arranging this visit. An added attraction was a Film Unit filming at a Forge with two very nice shire horses and actors in their costumes. As there was a slight disruption, the Authorities made the day a "Donation" day. The group went on their own to see the various attractions and we met up at the Café for a lunch.

It was decided that the June walk on the 23rd had to be cancelled and the next one will be in July on the 28th.

Join us on July 17th at the Coffee Tavern for refreshments and a chat regarding our future plans.

Thursday July 31st we have another lunch out. The venue has yet to be decided but there will be a notice in the North Porch of Eaton Bray Church.

### JULY DATES

**Thurs 17th ELF Meeting, The Coffee Tavern 10.30 am**

**Mon 28th Walk from Eaton Bray church 10am**

**Thurs 31st Lunch out**

# Dagnall News

## Over 60's

In June, the Dagnall Over Sixties outing was to Windsor for lunch followed by a boat trip on the Thames.

In July we will be having the annual garden party in the Yorke's' beautiful garden with ice creams and the raffle.

In August we have tea in the Village Hall and a talk by John Tyler on The Ridgeway. Phone 01442843202 if you are over sixty and would like to join us.

## Community Choir

### Splinter Group at Choir

Your Community Choir continues with, what has become, a devoted and much valued group of singers and we are busy learning new songs and music medleys, including "Miss Saigon", for our Autumn Concert Season.

In an unprecedented effort to bring some variety to our Concerts there has been a splinter group of male members who have decided, for better or worse, to form a separate Male Chorus to perform sea shanties, folk songs, spirituals etc. This should not only bring some variety but also an opportunity for the audience to join in if they cannot resist the urge to do so.

A general warning has been issued to our much admired female members to resist the temptation to hurl abuse or rotten fruit/vegetables when the results are first presented to them.

The results of all our efforts will be showcased in our Autumn Concert at Eaton Bray Village Hall on Saturday 11th. October. More details will appear in next month's Focus. We will then, once again be part of The Poppy Prom. at St. Mary's Church, Eaton Bray on Nov 8th. and are planning a free Christmas Concert on the afternoon of Sunday 7th. Dec. at Dagnall

Village Hall.

It will seem odd singing Christmas songs in the middle of Summer but we feel that, if local residents are going to make the effort to come to see us, the least we can do is to prepare as best we can.

Under the enthusiastic and light hearted musical leadership of Michelle Garrard and with Judy Smither, our accompanist, our sound continues to improve, and it is a joy to hear our little Dagnall Church filled with beautiful music (and laughter) every Monday.

## Dagnall School



Well Done Dagnall School!



The children at Dagnall School have now earned their Silver Wildlife in action award to add to their Bronze award from the RSPB.

We used binoculars to spot birds in the school locality. In our sketch books we drew the birds and then back in the classroom we identified the birds and found out facts about them. The children made bird feeders from different materials, including wood and plastic cartons. We then filled them with nuts and seeds and positioned them in different areas of the school grounds. They needed re-filling very quickly! The children thought about different ways they could reduce, re-use, recycle different items that they might have and use. We have set up compost bins at school. We looked at the components of our small bin where we put most of our fruit and veg waste from snack time. We were surprised to see so many minibeasts in there! We use the compost in our gardening club.

As a school we have been campaigning for

the speed to be reduced in our village by the school. We wrote to our MP expressing our concerns, including a 'speed watch' and maps of where we think a zebra crossing could go. We have since had a visit to the school from Mr John Bercow.



We put a press release in the local papers demonstrating a couple of near misses experienced by parents walking their children to school. We are thinking of ways to raise money to have a sentinel camera which will monitor the speed of traffic through the village and by the school.

## Open Gardens 2014

Well, we were blessed with a beautiful day – such a difference from 2013 – and there were some lovely gardens on display. Open Gardens Sunday on the second Sunday of June has become a wonderful social occasion in the villages and St Mary's is very grateful to all those people who opened their gardens to the public and worked so hard to ensure they were at their best for the event.

Between the various fund-raising activities on the day a sum of close to £1,500 was made. So a huge thank you to everyone who came along to see the gardens and everyone who helped, especially to Kay Griffiths who organised the event. If you would be willing to open your garden next year please contact Kay on 222849 or Gordon Gray on 220136.

## Lights Camera Action!

### Curtain Call Theatre Group comes to Eaton Bray

Having only recently moved to the village, I was keen to get out and meet new friends and reignite my love of performing arts, so I grabbed the Focus magazine in eager anticipation of finding my calling. There it was... Curtain Call's advertisement for their recently relocated theatre group inviting new members to join them. So I did, and in those few weeks I managed to land myself a part in the play Comic Potential by Alan Ayckbourn. So the learn lining began, the dress rehearsals came and went and I was soon on stage performing to a full audience with the rest of the fantastic cast. And what a brilliant time we had portraying the story based in the near future of the trials and tribulations of an android and an aspiring writer falling in love. I am so glad I joined



the group. It's a friendly bunch of all talents and I was made to feel so welcome despite having not picked up a script for at least ten years! We are now underway planning our next performance for our annual panto, which this year is Jack and the Beanstalk and will be performed at Eaton Bray Village Hall on the last weekend in January. Anyone is welcome to come along and join us, and auditions are being held from 8pm on the 7th July at Eaton Bray Village hall. Curtain call meets there every Monday from 7:30pm and we would love to see you; it might not be Hollywood but it's just as fun!! You can find out more by emailing Sheila on [sdtwinkletoes@yahoo.co.uk](mailto:sdtwinkletoes@yahoo.co.uk) or finding us on Facebook and Twitter.

✍️ Elle Laird

# Old Edlesborough

## Dunstable Borough Gazette Article 5th December 1934

### WHEN THE CHURCH SPIRE WAS DESTROYED

By reason of its lofty situation, Edlesborough Church forms a well known landmark on the west side of Dunstable, but in the early part of the nineteenth century, it must have been visible over a much greater area, for, prior to 1828, the church possessed a fine spire. In that year, however, the spire was set on fire as a result of being struck by lightning, and, despite frantic efforts to quell the outbreak, was destroyed.

The damage to the body of the church was repaired, but the spire was not rebuilt. The church itself is rich in relics of bygone days, and the village of Edlesborough, also, has many historically interesting features.

The appearance of the church, before the fire, can be gathered from a drawing made by Mrs. W. B. Wroth, wife of the vicar of the church from 1816-1863. This, together with a copy of a contemporary report of the fire, by the Rev. W. B. Wroth, is exhibited in the church.

The church is described as a lofty building, situated on an eminence, five miles from Leighton Buzzard and three from Dunstable, and forming a very picturesque object viewed from every part of the surrounding country.

The report continues that, on Friday, March 21, 1828, between three and four o'clock in the afternoon, during

a violent storm of hail, accompanied by one vivid flash of lightning, and followed by a tremendous clap of thunder, the weathercock of the church was observed by a shepherd to have been struck down by lightning. Soon he saw smoke issuing from the spire.

"The alarm was given," continues the report, "and it was discovered that the electric fluid had set alight to the spire, and in half an hour the flames burst out just beneath the crown of thorns, which was situated beneath the weathercock."

The vicar, parish officers, and other principal inhabitants, who happened at the time to be assembled in the vestry, together with the greater part of the parishioners, hastened to render their assistance in extinguishing the flames. Messengers were sent to Dunstable, Ashridge and Ivinghoe for fire engines. The fire at first burnt slowly, and could anyone have ascended to the top of the spire, whence it proceeded, it might have been extinguished, but the great height of the building, and the extreme violence of the easterly wind, rendered this impossible.



*A photograph of the Church, taken in 1873, showing an example of one of the old mud huts, by the side of the Northall Road. This photograph, which was loaned by Mrs. Heley, of Totternhoe, originally belonged to Mr. John Siret*

## **Villagers Helpless**

The inhabitants, therefore, had the pain of beholding the fire increase, without being able to do anything to prevent it, and could only wait for the arrival of the fire engines. One, from Ashridge, arrived in less time than even they, in their anxiety, had expected, and not long after, the two others from Dunstable and Ivinghoe.

"Every nerve was now strained," wrote the vicar, "to working the engines and supplying them with water, and the most sanguine hopes were entertained that the flames would quickly have been got under, but unfortunately, the engines were unable to reach the spire, and notwithstanding every effort the fire, aided by the violent wind, continued to increase. The molten lead began to pour in streams and in short time the whole spire appeared one perfect mass of flame. The wind, at the same time, rushing through the louvre boarding of the windows, caused the fire to roar most awfully, louder even than the thunder accompanying the lightning which caused the conflagration. All hope of saving the spire, the bells or anything of the tower were now at an end, and the whole attention was directed to preserve the body of the church."

## **The Bells Fell**

"The gallery and some of the seats were immediately removed," he continues, "and the belfry also was attempted to be taken down, but the streams of molten lead still continued to pour down from the upper lofts, and the momentary expectation of the bells, which had now become red hot, falling, prevented anyone going into the tower."

"The bells fell with a tremendous crash, red hot, carrying with them the belfry floor, and setting alight to the lower part of the tower, which had hitherto escaped. The whole of the tower now presented

one body of fire, of more than 100 feet in height, which continued to roar with a deafening sound."

"This, with the reports at intervals of the bursting of the mass of stones of which the tower was composed, not less loud than cannon, conveyed to the minds of those who witnessed the scene the very serious injury the church was suffering."

The report goes on to tell us that the fire continued in its ravages until five o'clock on Saturday morning, when everything combustible in the tower, together with the whole of the spire, was destroyed. The body of the church caught fire twice during the night, but through the great exertions of persons who ascended the church at the imminent risk of their lives, the progress of the fire was happily arrested.

The bells, with the exception of the small one, were all broken in falling, and the wall of the tower burst in places, through the intensity of the heat. During the twelve hours the building was on fire the greatest exertions were made by the persons present, and, as the Rev. W. B. Wroth writes "It is a pleasant, though melancholy reflection that, although unavailing, everything was done to stop the devouring element which human endeavour could devise."

The account concludes with: "Thus has been destroyed the spire of a church which afforded a striking and beautiful picture from the country for many miles round, a peal of excellent bells, and a church, unrivalled in magnitude and beauty by few country churches in England, so seriously injured as to be unfit for the performance of public worship."

The report is signed: "W. B. Wroth, vicar, John Smith and Benjamin Gray, Churchwardens."

## **Repairs Executed**

A later account shows that the greater part

of the tower was rebuilt, a new set of six bells provided, and the general repairs to the church executed at a cost of nearly £1,000. The six bells are posed of the metal of the old ones.

The oak lectern now in use in the church was made out of timber saved from the fire. It bears the inscription, "Ereptum ex igne, 1828," on one side of the desk and on the other "W. B. Wroth, vicar."

The present building appears to date back to the 13th century, there being apparently no evidence of an earlier church on the same site. In the time of William the Conqueror, the advowson and church were given to Bardney Abbey, in the County of Lincoln, by one Gilbert de Gand, owner of the manor, and this grant was confirmed in 1115 by his son and successor. Up to 1357 the benefice was apparently a rectory, but in that year it became a vicarage, the last rector being John de Swynstede. Mention is found that in 1379 King Richard II granted to the Prior of the House of Carthusians the advowson of the Church of Edlesburgh in the County of Buckingham and Diocese of Lincoln. The Diocese of Oxford was not founded until 1542.

In the 14th century some remarkable changes took place in the structure of the church, in the course of which considerable enlargements were made. The tower, was probably rebuilt upon a larger scale, the north and south aisles were increased in width and the two porches added to the church.

### **Silent Bells**

The church is particularly rich in 15th century oak fittings, and there are many examples of the excellence of the mediaeval carpenter's art. The carved hinged seats are exceptional, as are the old desk front. The pulpit and canopy forms a very beautiful example of the 15th century

octagonal pulpit, of wineglass formation. The sounding board, or canopy standing above the pulpit, is connected to it by oak supports, exquisite both in design and workmanship.

One of the most interesting features of the church is the small window near the font, known as the "Leper's Squint." This is said to be the window through which lepers, who, owing to the nature of their illness, were not allowed to mingle with the congregation, used to watch the service. On the other hand, it is maintained that this is unlikely, as the altar is not visible from the window, which probably had some other, and less tragic, use.

Unfortunately, the main walls of the church are nowadays in rather a bad state of repair. The walls are faced with dressing stones, but the core is filled in with rubble. The stones used in the construction were, in all probability, quarried at Totternhoe. Owing to the effect of the vibrations on the walls, it has now been found necessary to cease ringing the bells.

### **MUD HOUSES**

The drawing by Mrs. Wroth which depicts the church before the disastrous fire, was apparently made before the present Northall Road was in existence. In the foreground can be seen an example of the old mud huts, of which there used to be several where the Northall Road now runs. These huts consisted of two rooms on the same level, one for living in, and one in which to sleep. The walls were built of sticks, stones and mud, and the roof was thatched. The floor consisted of nothing more than earth, trodden down hard, and in these hovels whole families lived, and apparently thrived. Up to a short while ago one of these old huts was being used as a barn. Several of the older inhabitants of the village can remember when they were in a comparatively good



state of repair and had recently been used for their original purpose.

### **THE TITHE BARN**

One feature of Edlesborough which has aroused considerable interest on both sides of the Atlantic is the old Tithe Barn, belonging to Church Farm. The barn was built in the 15th century, and is claimed to be one of the biggest of its kind in England. It is a lofty structure of oak framing, with immense rafters and brick panels, 180ft. long and 30ft. wide.

In the olden days it was an annual custom, now discontinued, for the farmers of Dagnall, Northall, Edlesborough and other Buckinghamshire villages to bring offerings from their harvest crops of

wheat, barley and oats, and place them in the bays specially constructed for the purpose, which ran right along the walls. Afterwards the produce was presented to the church. The evening would then close with a harvest supper in the barn, to which the farmers, their wives and relatives sat down.

A year or two ago the owner of the property had the roof, which was previously thatched, replaced with tiles, at a cost of £1,250.

The barn, together with the Monk's Dovecot and the moat, appear to be all that remain of a medieval religious house which stood upon the site of Church Farm.



## **St Mary's 100 Club**

St Mary's has stood in the village for almost 800 years and, throughout its history, it has not been equipped with that most basic of facilities, a toilet.

This has meant that some elderly folk have been unable to risk coming to church, visitors for funerals and weddings have been uncomfortable throughout services and, rather unsatisfactorily, children have been instructed to 'go behind a gravestone'. 2014 should see that situation remedied with the construction of an extension to house a new toilet.

To help fund the toilet we have started a 100 Club, featuring monthly draws of 50% of the received income. For just £2 per number per month you could help St Mary's get this much needed facility and put yourself in with a chance of winning a first prize each month of over £50.

This month's draw was made by Coralie McCluskey, Kay Griffiths, and Will Griffiths at the "Open Gardens 2014"

reception. Many thanks to those who allowed us to see how their hard work over the year(s) has paid off!

If you were unable to visit on the day, or would like to rekindle the memories, then please visit: [www.StMarysEatonBray.org.uk/Events/Open-Gardens/2014/](http://www.StMarysEatonBray.org.uk/Events/Open-Gardens/2014/)

At the time of the draw the 100 Club had 120 members, so the three winners share a prize money pot of £120.

### **Congratulations to the winners of our**

#### **June draw:**

Winner of £60

No.52, Rachel McVeigh, Eaton Bray

Winner of £36

No.41, Gordon Gray, Northall

Winner of £24

No.113, Alan Brook, Eaton Bray

If you would like to help us by joining the 100 Club please collect a form from St Mary's Church, Eaton Bray, or from [www.StMarysEatonBray.org.uk/Groups/100-Club](http://www.StMarysEatonBray.org.uk/Groups/100-Club)

# Are Laptops Damaging your Health?



Although they offer versatility and portability they are not designed for long-term static use.

As far back as 2005 laptops outsold desktops and this had led to a huge increase in posture related back pain and repetitive strain injuries.

The human head is very heavy – balanced evenly between the shoulders is its ideal position. However, by using laptops we tend to position our ears in front of our shoulders which equates to holding a weight out at arm's length. This in turn increases the load through the spine and causes neck, upper back and arm problems.

There are some ways that you can minimise the risks associated with laptops:

1. Make sure your laptop is on a stable base and not on your lap.
2. Sit up straight with your lower back

- supported, not slouched on the sofa!
3. Avoid upper body strain by taking regular breaks from the screen.
4. Use a separate keyboard and mouse so that the laptop can be put on a stand and the screen opened at eye level.
5. For long-term working, use your laptop with a separate monitor and keyboard.

If you would like further help why not ask for a home or workplace assessment with our expert ergonomic advisor.

Tips by St Judes Clinic,  
26 Lake Street  
Leighton Buzzard LU7 1RX  
☎ 01525 377751

🌐 [www.stjudesclinic.com](http://www.stjudesclinic.com)



## The Salvation Army, Booth Place, Eaton Bray Weekly Activities



### Sunday

Footprints (Sunday School) 9.45-10.45am  
Morning Worship 11.00am  
Songs of Praise 4.00pm  
3rd Sunday of the month Easter to December

### Tuesday

Coffee Morning  
(alternate weeks) 10.00-11.30am  
Music practices (all welcome) 7.30-9.00pm

### Wednesday

Home League  
(Ladies Mtg but all welcome) 2.30-3.30pm  
Champions Challenge Club (term time)  
(Ages 5-10 years) 5.45-6.45pm

### Thursday

Parent and Toddler Group  
(Term time) 9.15-11.15am  
Haberdashers' night  
2nd Thursday of month 7.45 pm  
Ladies Fellowship  
(Last Thursday of month) 7.45pm

*For further details please call the office on  
01525 222087 (office not manned full time)  
[www.salvationarmy.org.uk/eatonbray](http://www.salvationarmy.org.uk/eatonbray)*

## BACK FOR ONE NIGHT ONLY!! THE BEN TREACHER JAZZ

### QUARTET

Rare opportunity to hear highly qualified and experienced young jazz musicians from the London Jazz scene

SATURDAY, 19<sup>TH</sup> JULY 2014

PITSTONE MEMORIAL HALL, PITSTONE



This is a charity fund-raiser for Pitstone Memorial Hall in memory of Ron Treacher

TICKETS: 01296 668094/IVINGHOE P.O./MASON'S  
STORES/IVINGHOE TEA ROOMS (£10/£8.50)

DOORS OPEN AT 7.30PM, MUSIC STARTS AT 8.00PM  
LICENSED BAR, HOT & COLD BEVERAGES, HOMEMADE CAKES

— Christopher —  
**PALLET**



*Estate Agents - Valuers - Letting Agents*

**Successfully  
Selling in LU6**

Contact Us Now  
for a Free Valuation

**01525 222333**

[www.edlesborough@christopherpallet.com](mailto:www.edlesborough@christopherpallet.com)



# Coffee Tavern

Large Hall		£6.00 per hour
Committee Room		£3.50 per hour
Large Hall & Committee Room		£8.00 per hour

Bookings 01525 220891  
Stairlift and access ramp available

## D NICHOLSON PLUMBING REPAIRS and INSTALLATIONS

NO JOB TOO SMALL



- Emergencies · Free Estimates
- No call out charges

Dave Nicholson

**MOBILE: 07976 975604**

**HOME: 01525 872335**

City & Guilds  
Qualified

## R.J.O'CONNELL BUILDING SERVICES

EXTENSIONS, PATIOS,  
DRIVEWAYS, ROOF REPAIRS  
AND PROFESSIONAL  
DECORATING SERVICE

**TEL: 01296 681323**

**MOB: 07855 236726**

## Will Kimberley Garden Services 01442 255784

Phone for a free no obligation written estimate  
[wkgardenservices@btconnect.com](mailto:wkgardenservices@btconnect.com)

- High hedges a speciality
- Fences erected and repaired
- General garden tidy up's
- In fact any job in the garden!

# Make a Will

AND LASTING POWERS OF ATTORNEY

## Protect Your Home 100%

**YOU DECIDE**, who is to run your affairs, who gets what, guardians etc, not the State.

**MINIMISE RISK** of Inheritance Tax and the disinheritance of children.

### Best Price Guarantee

from specialist Solicitors and professional Will Writers since 1999

FREE HOME VISIT

For a **DAYTIME** or **EVENING** appointment call

# 01525 220644

[www.wisechoicewills.co.uk](http://www.wisechoicewills.co.uk)

from  
**CARE FEES**  
and  
**PROBATE COSTS**



Will Trusts & Probate Practice

*A wise choice*

MAKING A WILL HAS NEVER BEEN EASIER

*Stuart Ball*

*Ceramic Wall & Floor Tiling Specialist*

*Over 31 yrs Experience*



**City and Guilds of London Institute**

*Tiles supplied or Labour Only*

*For a reliable service call your Local Tiler*

*Eaton Bray 229381*

## Signs \* Graphics \* Clothing

# PinStripes

VEHICLE GRAPHICS

MAGNETICS

PRINTED & EMBROIDERED CLOTHING

SHOP SIGNS & WINDOWS

BOARDS & BANNERS

BUSINESS CARDS & STATIONERY

CANVAS PRINTS

AND SO MUCH MORE!

**01525 220485**

**07973 167779**

Join us on Facebook @

PinStripes Signs Graphics Clothing

For updates and special offers

**EXCEEDING EXPECTATIONS IS JUST PART OF OUR SERVICE**



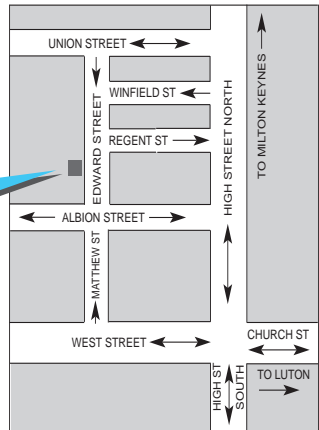
If you're **selling**, **letting** or **buying** a home, make it happen with your local estate agent



01525 220605 • [info@giblinproperty.co.uk](mailto:info@giblinproperty.co.uk)  
[www.giblinproperty.co.uk](http://www.giblinproperty.co.uk)

# Dunstable LAMINATES

email or fax your requirements for a quote or take advantage of our free home measuring service cutting and edging service available



why not visit our showroom - you'll be amazed at the choice

47 Edward Street, Dunstable,  
Bedfordshire LU6 1HE  
Tel: 01582 668973 Fax: 01582 608227  
Email: sales@dunstablelaminates.co.uk  
Web: www.dunstablelaminates.co.uk

THE **WORKTOP** specialist



## James B Chadburn FBHI Fine Antique clocks & Barometers

Specialist in repairs & restorations.

Valuations & clock finding service.

Advice & assistance on formation & disposal of private clock collections.

Quality clocks/barometers Bought & sold.



Telephone 01525 221165

Mobile 07790 000629

E-mail: info@jameschadburn.com



## Café masala

*Exquisite Indian Cuisine*

We Cater for Office or Private Parties and don't forget to try our Sunday Buffet

10% Discount on all Takeaway Orders Over £12

Fully Licensed & Air Conditioned

Open Seven Days a Week

Hours: 12 Noon to 2.30pm & 6.00pm to 11.30pm

**Tel: 01525 22 22 64**

63 Bower Lane · Eaton Bray · Dunstable · Beds · LU6 1RB  
email: taraque@hotmail.co.uk · www.cafemasala.com

# alto window cleaning

*A reliable and professional service.....*

- Window Cleaning
- Conservatory Cleaning
- Fascia & Gutter Cleaning
- Solar Panel Cleaning

**T: 01525 234120**  
**M: 07807 973871**

## AARON FENCING

ALL TYPES OF DOMESTIC & COMMERCIAL  
FENCING & DECKING WORK UNDERTAKEN

*FREE ESTIMATES*  
*FULLY QUALIFIED & INSURED*  
*PERSONAL SERVICE AT COMPETITIVE PRICES*

**TEL: 01582 665779**  
**MOBILE: 07798 927272**

7 STATION ROAD, DUNSTABLE, LU5 4HS

Buy Direct From Our  
Own Farm

Master Card

VISA

From **Ivinghoe Turf**

- Commercial & Domestic
- Small Orders Welcome
- Bark, Grass Seed & Fertiliser
- Laying Service
- Discount on Larger Orders
- Screened & Blended Topsoil
- All Year Availability
- Forklift Delivery Available



**ROLAWN®**  
Approved Rolawn  
Stockist

Family firm farming since 1949

**ALL AREAS**

Freephone :

**0800 043 5061**

[www.ivinghoeturf.com](http://www.ivinghoeturf.com)

The Bungalow, Vicarage Farm, Ivinghoe, Leighton Buzzard

# YEARDYE

*Luxury Bathrooms*

25 years in Herts  
Beds and Bucks

DESIGN  
SUPPLY  
INSTALLATION



[www.yeardyeluxurybathrooms.co.uk](http://www.yeardyeluxurybathrooms.co.uk)

email: [cliff@yeardye.com](mailto:cliff@yeardye.com)

T: 01525 222717 M: 07972 328590

## ARC Contract Services Ltd

- Painting & Decorating • Plastering
  - Wall & Floor Tiling • Door Hanging
  - Bathroom & Kitchen Installations
- 20 years experience

All work guaranteed and fully insured

Call Adrian : **01582 539179**

Mobile : **07789730580**



## WESTROPE BROS.

**LAWN MOWER SERVICES**

ALL TYPES GARDEN MOWERS SERVICED

**THE RYE, EATON BRAY**

**Tel: Eaton Bray 220587**

# Gas Boiler Servicing

Over 35 years experience

Have your boiler serviced by a **Gas Safe**  
and **CORGI** registered engineer

Other services available:

Maintenance, repair and installation of all domestic gas appliances including L.P.G. Boiler installations, Landlord Safety Certificates and Power flushing.

Free Quotes, no call out fee, and free friendly advice on all of the above.

## Edwards Gas & Heating Services

Eaton Bray

# Tel 01525 220626

Email: [stevethegas@orange.net](mailto:stevethegas@orange.net)



## Vicky

### *The Dog Care Specialist*

### *Where Dogs Come First*



- Over 20 years of professional experience
- Sympathetic and gentle handling of all dogs
- Trained at the London Academy of Professional Groomers to the highest City and Guilds standard
- Dorwest Veterinary Trained
- Member of the Pet Industry Federation
- **No cages used**

[www.vickysdogcare.co.uk](http://www.vickysdogcare.co.uk)

Telephone: 01525 222775

Mobile: 07796 445416

Email : [enquiries@vickysdogcare.co.uk](mailto:enquiries@vickysdogcare.co.uk)

*Committed to the highest standards of animal welfare and customer care.*





**BEFORE**



**& AFTER**



# MISTY DOUBLE GLAZING ?

**KEEP YOUR WINDOW FRAMES....**

**....WE JUST REPLACE THE GLASS!**

- UPVC • Aluminium • Or Wood

Because we replace just the glass the repair is a

**FRACTION OF THE COST**

of a complete replacement window.

## mistydoubleglazing.co.uk

### 01525 876808

#### QUALITY GLAZING SERVICES

**We also replace Broken...**

- Glass • Handles • Hinges & Locks

**and Repair... Patio Doors & Conservatories!**



**UPVC  
frame  
cleaning  
service  
available**

## REVITALA HOLISTIC THERAPY

Holistic therapies are concerned with treatment through massage, manipulation and relaxation. They are not only treatments for one physical ailment or one part of the body, but also treat the person as a whole. Ideal for today's stressful lifestyles.

Treatments include:

- Aromatherapy Massage
- Indian Head Massage
- Hot Stone Massage
- Reflexology
- Reiki

Vouchers are available for any treatment, so why not treat a loved one or friend as well as yourself.

Edlesborough based. For more information or to book an appointment call  
Kate Meredith IHHT, RGN, on **01525 221380**

*HPC Registered  
CHIROPODIST & PODIATRIST*



*For visits in your home  
Phone: 07981 749038*

*(Also Central Luton surgery - open 6 days)*

**jazzercise.** 60 minutes  
real Results of **ME** time



**01525 715208**

[www.jazzercise-uk.com](http://www.jazzercise-uk.com)

[facebook.com/jazzercise.](https://facebook.com/jazzercise)  
[dunstablelutoneatonbray](https://dunstablelutoneatonbray)

**Thursday & Saturday 9.30am  
Eaton Bray Village Hall**



# Stephen D. Janes

(Established in 1982)

**CARPENTRY, JOINERY  
KITCHENS FITTED  
PROPERTY MAINTENANCE  
TELEPHONE: 01525 220649**

## Digital +

**Aerial & Satellite Systems**

tel:01525 237498  
mobile:07970 260518  
www.digitaltelly.net



BT Vision



**sky freesat**



## **BELLOWS MILL**

*Bed & Breakfast & Self Catering accommodation*

Civil Wedding ceremonies and receptions available

Eaton Bray, Dunstable, Beds. LU6 1QZ  
Tel: 01525 220548  
email: [reservations@bellowsmill.co.uk](mailto:reservations@bellowsmill.co.uk)

[www.bellowsmill.co.uk](http://www.bellowsmill.co.uk)



Ian is one of the countries most sought after photographers. He is recommended by some of the UK's most prestigious venues such as Luton Hoo, Ashridge, The Kia Oval, Hatfield House and The Connaught to name just a few. Ian specialises in wedding, portraits and commercial photography.

**Ian Waldron**  
naturally relaxed photography

[www.ianwaldronphotography.com](http://www.ianwaldronphotography.com)  
01525 221479

Your Village Photographer  
Based at Sparrow Hall Farm - Edlesborough



# EB Lions

## Search for Land



I am sure that all readers of Focus Magazine that have followed the EB Lions AFC All-weather Training Pitch over the past few years will understand the disappointment suffered following EBPC's decision not to support the project.

Unfortunately, our need for grass pitches for both playing matches and training has not gone away.

EB Lions is the village children's football club, with FA Charter Standard accreditation and in 2013-14 running 24 teams with more than 300 local children playing sport in the villages. The club has the expertise and access to funding necessary to convert or restore common/ agricultural land to football pitches and has now begun an extensive search to locate a suitable site.

The site would ideally be reasonably flat with good access, between one and four acres in size and located within easy reach of our primary catchment area of Eaton Bray, Edlesborough, Dagnall, Kensworth, Totternhoe, Studham, Northall, Slapton and Ivinghoe Aston.

The club has resources to buy or alternatively enter into a long-term leasing arrangement at a sensible rate for the ideal site.

If you have, or are aware of any potentially site, please contact in the first instance, either Paul Marshall – [pm@ctlanet.com](mailto:pm@ctlanet.com) (01525 222492); Tim Sanders ([tim.26sanders@virgin.net](mailto:tim.26sanders@virgin.net)) or through the club website ([enquiries@eblions.co.uk](mailto:enquiries@eblions.co.uk)).

Equally if your son or daughter is interested in playing football, please get in touch to register your interest now for the coming 2014-15 season. We have teams for boys and girls at all age groups from U5 to U18.

## Neil Hodson Associates

*BUILDING DESIGN  
STRUCTURAL ENGINEERING*

**PROFESSIONAL BUILDING DESIGN,  
ADVISORY AND DRAWING SERVICES**

From plans for domestic extensions to multi-storey offices, commercial buildings and factories.

Structural surveys, site surveying,  
advice on building defects and  
Feasibility Studies

Planning Applications and Building  
Regulation Consents obtained.

**24 HIGH ST TRING  
Tel 01442 890894 OR  
Edlesborough 222462**



**Michael Hubbins**

**Ex. BT. ENGINEER**

**38 YEARS EXPERIENCE**

Telephone Extn. Sockets  
Domestic Electrical work

**Phone: 01582 471648  
Mob: 0771 8834851  
34 Grove Road  
Dunstable LU5 4BY**

**Anne Johnson D.O.**

**Registered Osteopath**

6 Moor End, Eaton Bray

**01525 221958**

**07957 250682**

Daytime and Evening

Appointments Available



# J ABLE BATHROOMS

**New Showroom Opening in Edlesborough Soon!**

We offer a complete design, supply and installation service.

## DESIGN

Free CAD design of your bathroom so you can see a photo realistic plan of your finished bathroom.

## SUPPLY

Come and browse our display suites and we will help you find the bathroom you are looking for.

## INSTALLATION

Our installations are of the highest standards!

We take pride in making sure our customers are delighted with the finished result.

**We have suites in a wide range of styles to suit any budget.**

**Drop in or ring to make an evening appointment at the showroom.**

**You can also ring to arrange a home visit at your convenience.**

[www.jablebathrooms.co.uk](http://www.jablebathrooms.co.uk)

***J ABLE BATHROOMS THE LOCAL BATHROOM EXPERTS YOU CAN TRUST***

3 Summerleys, Edlesborough, Buckinghamshire. LU6 2HR (Just past the village shop)

Tel: 07891 449 077 or 01525 220043 E: [ableplumbing@hotmail.co.uk](mailto:ableplumbing@hotmail.co.uk)

# fancy a break?



LUXURY 3 BED, 2 BATH APARTMENT APPROX 1 MILE FROM CENTRE OF PUERTO BANUS MARINA, SPAIN. 45 MINS EASY DRIVING FROM MALAGA AIRPORT.

ALL MOD CONS INCLUDING AIR-CON, SAT TV, FULLY EQUIPPED KITCHEN, SWIMMING POOLS, EXCELLENT CLUBHOUSE & TENNIS COURTS.

MANY GOLF COURSES AND ALL WEATHER BOWLING GREENS NEARBY. CLIMATE IDEAL FOR HOLIDAYS THROUGHOUT THE YEAR. RATES £350 - £750.

CALL PETER OR CELIA ON 01525 220173 OR VISIT OUR WEBSITE AT [WWW.479LOSANARANJOS.CO.UK](http://WWW.479LOSANARANJOS.CO.UK).

# Plumm

PROPERTY

*'A fresh approach to selling property' ...*

**IN AND AROUND YOUR VILLAGE**

**Phone now for a free, no obligation, Valuation of your Property**

**01296 660230**

**01442 863737**

[www.plummproperty.co.uk](http://www.plummproperty.co.uk)

## Absolutely Plastered

**DOMESTIC/COMMERCIAL,  
CLEAN AND RELIABLE SERVICE,  
FREE ESTIMATES, FRIENDLY ADVICE**



- \* Plastering & Coving
- \* Floor Screeding
- \* Pebbledashing & Rendering
- \* Dry Lining
- \* Cornices & Mouldings
- \* Insurance Work Undertaken

**CALL NICK CONWAY ON**

**Mobile: 07751 830716**

**Tel: 01296 688981**

6 Cotes Way, Wing, LU7 0RB

*Established over 20 Years*

## Duncan Tomblin TREE SURGEON

Forestry Contractor • Tree Felling  
Crown Reduction & Thinnings  
Deadwooding • Hedge Cutting  
Stump Grinding • Site Clearance  
Private Agriculture Fencing Contractor  
Chipper & Stump Grinding Hire  
Digger Hire

**FULL PUBLIC LIABILITY INSURANCE  
FREE ESTIMATES**

*'The Best Choice For Your Tree'*

**TEL: (01525) 221946**

MOBILE: (07802) 410728

12 Greenways, Eaton Bray, Beds

# SUMMER PARTY

SATURDAY 19TH JULY

7:30pm - Midnight

. CASH BAR .

. DISCO .

. BBQ .

Tickets £15 each (or £120 for 10)  
and include a drink on arrival

Friends of Edlesborough School (FOES)  
invite you to a Hawaiian Beach party on  
the school field!

For tickets or further information  
please call Becca Stansfield on 223087.

- Strictly over 18s only -

*Northhall Village BBQ/Fun Day  
Sunday 13<sup>th</sup> July 2014  
at Northhall Village Hall*



*Everybody Welcome!*

*Also, are you interested in what we are doing at the Village Hall? If so, please join us first for the AGM at Noon (and enjoy a free glass of Pimms!)*

***BBQ starts at 12.30pm, Live Band from 1.00pm, Bouncy Castle,***

*Face Painting, Stalls and more! **Bar** + tea/coffee, soft drinks and cakes*

*Tickets for the BBQ/Fun Day from Marlene Bennett at Edlesborough School and The Swan Pub - or phone Sarah on 221186 or Rebecca on 221322*

*~ Adults £3.00, Children £2.00, Under 5s go free ~*

*First burger/vege burger or hot dog included in ticket price!*

*Look out for 'It's BBQ Time' notice in Focus and see Facebook (Northhall Village Community)*

Northhall Village Trust - Registered Charity 1117673

# Give Bowls a Go!

## Open sessions for you

Every Tuesday at 2pm

Every Friday at 6pm

**May to September**

**CHEDDINGTON BOWLS CLUB**, your friendly local Club, is for everybody – all ages: beginners to experts.

Our Open sessions are an ideal opportunity to get to know bowls and refine your skills. Come with trainers or flat soled shoes. We will supply the rest.

Cheddington Bowls Club, The Recreation Ground, High Street,

**Contacts:** Nigel on 01442 824 679 or Sue on 01296 668 772



Sponsored by [www.wisechoicewills.co.uk](http://www.wisechoicewills.co.uk) • 01525 220644



# Eaton Bray Academy

*What makes Eaton Bray Academy a wonderful place to be?*



Here are just some of the exciting activities and developments that the children have enjoyed recently



Stockwood Park Sports



EBA Enterprise – Dragons' Den



Music Lessons



Holiday Club Fun



Extra-Curricular Clubs



Please come and visit our friendly village school.  
Phone 01525 220468 or email [admin@eba.ec](mailto:admin@eba.ec)



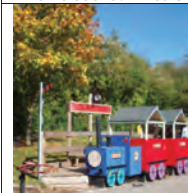
Theatre Trip



"Home cooked" meals



Refurbished ICT Room



Pre-School Playground



Key Stage Two Pantomime



Breakfast Club



Curriculum Days

## Quotes from parents

*"The school has already exceeded our expectations as a nurturing, encouraging and holistic educational establishment."*

*"I cannot think of any better environment for children to be nurtured in!"*

*"We like learning French!"*

## Quotes from children

*"I like it when we do our work."*

*"Early Reading is good. I love doing my letter sounds!"*

*"We are all learning!"*



# MOT TEST CENTRE

**ROEBUCK GARAGE**  
HIGH STREET  
**EATON BRAY**  
**220385**

## McTimoney CHIROPRACTIC



Margie Craib BSc BHSI DC AMC MMCA  
Human and Animal Treatments

Ashridge Farm, Ringshall, Berkhamsted, Herts HP4 1ND  
Telephone: (01442) 842729

General Chiropractic Council Registration No. 293



Virtual administrative  
support to businesses &  
private individuals

Website hosting  
Domain registration  
Desktop publishing

# 01525 229695

Email:

[enquiries@morenassociates.co.uk](mailto:enquiries@morenassociates.co.uk)

[www.morenassociates.co.uk](http://www.morenassociates.co.uk)

## ADRIENNE'S PRIVATE HIRE

Call for a **FREE** quotation  
*Book early to avoid disappointment*  
*Very competitive prices*

Airport Transfers  
& Private Hire

**07980 039715**

*Our executive Cars, 6 seater Minibuses and  
lady driver are all available*

## J.G.S. Metalwork & Son

Specialists in Gates  
& Gate Automation

Access Control • Security Grilles • Railings  
Balconies • Stairwells

[www.jgsmetalwork.co.uk](http://www.jgsmetalwork.co.uk)

Call in to discuss your ideas

High Street, Edlesborough LU6 2HS

Tel: 01525 220360 Fax: 01525 222786

## GRASS ROOTS GARDEN MAINTENANCE

TREE SURGERY, HEDGE PRUNING,  
SELECTION SUPPLY AND PLANTING OF  
TREES, SHRUBS AND HEDGES.  
REGULAR MAINTENANCE/ONE-OFF JOBS  
(Fully Insured)

Brian McMahon NCH (Arb)

**01525 221960**



## Edlesborough Flowers

Flowers, Gifts, Jewellery  
& More...

2 High Street,  
Edlesborough,  
LU6 2HS

Tel: 01525 221920

# Music at St Mary's



## **Buffalo Bluegrass Band**

**featuring Katrina Grant present**

## **An evening of foot-tapping music**

The heart of the band is in bluegrass but they often venture into other realms of American music. Along with songs of their own, they mix bluegrass "standards" and more modern songs. They also do a good line in foot-tapping fiddle tunes.

Tickets at £7.50 (accompanied children are FREE) from the Box Office - 01525 222283. Tickets will be on sale at the concert for the 2014 Poppy Prom

**St Mary's Church, Eaton Bray**  
**Saturday 16<sup>th</sup> August at 7.30pm**

# Rockin' Live Band FABULOUS FACE PAINTER

Stalls & Games  
Bouncy Castle Fun

Mini Masterpieces by Nicky

Tickets available from  
Marlene at Edlesborough  
School and The Swan Pub  
Northall

Jo  
Jingles™



It's  
**BBQ  
Time!**

Bar Available

Adults £3 and Kids £2

First burger or hotdog included in  
ticket price

Under 5s go **FREE**

Northall Village Hall  
South End Lane,  
LUG 2EX



**SUNDAY**  
**JUL 13**  
**12PM**  
**ONWARDS**

For further info or to book your FREE stall, please  
contact Sarah on 01525 221186 or Rebecca on 221322



Find us on  
Facebook

# ILLUSTRIA

## Kennels & Kathotel

Offering your pet a fully licensed Dog and Cat boarding service.

Purpose built Dog kennels

Individual Cat chalets with outdoor exercise runs

All in pleasant country surroundings

**01582 ~ 665343**



ILLUSTRIA  
Springfield Road  
Wellhead  
NR Dunstable Beds  
LU6 2JT



Proprietors

*Mick, Denise and Michele Garrod*

## G & J Groundwork Ring Garry

01582 477568

07949 118011

Fencing Panels • Blockpaving • Paths  
Shingle Drives • Slabs • Paving  
Steps • Gardenwalls • New Patios  
Relaying • Soak Aways • Drainage  
Free estimates or advice • References  
[www.gandjgroundwork.co.uk](http://www.gandjgroundwork.co.uk)

## Dog Walking & Pet Sitting



We look after any animal from hamsters to horses

Tel: 07756 930814

Email: [crittercare@sky.com](mailto:crittercare@sky.com)

## St. Judes

physiotherapy, health and well being

- Chartered Physiotherapists
- Chiropody & Podiatry
- Massage
- Acupuncture
- Pilates
- Pregnancy care



**Get back into the swing of things**

01525 377751

[enquiries@stjudesclinic.com](mailto:enquiries@stjudesclinic.com)

26 Lake Street, Leighton Buzzard  
Bedfordshire LU7 1RX  
[www.stjudesclinic.com](http://www.stjudesclinic.com)



For a top quality decorating job call

# Marc Flack

01525 223166

Trading locally for 10 years  
References are available

Make your house a home with blinds and awnings from

**VANSAR  
BLINDS**



[www.vansarblinds.co.uk](http://www.vansarblinds.co.uk)



- Free No Obligation Measuring And Quotations
- All Blinds Made To Measure
- Choose In The Comfort Of Your Own Home Or Workplace
- Family Run Business
- Large Range Of Quality, Affordable Fabrics And Colours To Choose From



Call: 01525 220477 or 01582 699565 E: [sales@vansarblinds.co.uk](mailto:sales@vansarblinds.co.uk)

### Financially Prudent (IFA) Ltd

23 The Green, Edlesborough, LU6 2JF

Your local IFA for impartial Personal or Corporate advice on:

- Mortgages
- Pensions & Annuities
- Insurance
- Savings & Investments

Call Paul Pearce on 01525 220480 or email [paul@finpru.com](mailto:paul@finpru.com) for a no obligation initial discussion



Financially Prudent (IFA) Ltd is authorised and regulated by the Financial Conduct Authority

**Richard Hunt**  
Professional Drummer  
Composer  
Teacher

[www.richardhuntdrums.co.uk](http://www.richardhuntdrums.co.uk)

- Drum tuition for all ages and standards
- Over 25 years experience

Contact Richard for tuition and all other enquires  
 Mobile: 07540 377902  
 Telephone: 01525 222732  
 Email: [info@richardhuntdrums.co.uk](mailto:info@richardhuntdrums.co.uk)

**Patricia's Mobile Beauty Room**

Beauty & Holistic Therapist  
Covering Beds & Bucks

Call: 07866 126 510  
01525 237 781

[www.pampereexpress.co.uk](http://www.pampereexpress.co.uk)

# Your Photos



*Top Right: Dunstable Downs from Ivinghoe Beacon  
by Richard Woodhead*

*Top left: Snakeshead Fritillary by Richard Woodhead*

*Right: Blue Tit and Robin by Phil Wood*

*Below: 5 day old blackbird chicks in my garden  
by Adrian Lewis*





*Top left: "Fish please" by Andy Cross  
Above: Flowers by Jacqui Kerr aged 13  
Left: My cat by Matt Wood  
Below: Ascott House in the spring sunshine by  
Richard Woodhead*



# S M Reilly & Son Ltd

## General Builders & Contractors



**Turning Your House into  
a Home Since 1987**

*All aspects of the building  
trade undertaken*

- \*Extensions\*Hard Landscaping\*
- \*Windows, Doors & Conservatories\*
- \*Fitting of Aluminium Bi-fold Doors\*
- \*Kitchen & Bathrooms\*Drives\*
- \*Loft Conversions\*

**01525 221740**  
**07970 637511**

**ALAN BOULT**  
(Light Haulage)



- TRANSPORT ● COLLECTION
- DELIVERY SERVICE
- SINGLE TO MULTIPLE ITEMS
- REGULAR CONTRACTS WELCOME

**Tel: 01296 427182**

**Mobile: 07770 237745**

Email: [boulton586@btinternet.com](mailto:boulton586@btinternet.com)

**A McClelland**  
**Pest Control**



**FOR FAST RESPONSE CALL:**  
**mobile 0777 494 8415 or office 01582 872158**

*specialists in: wasps - bees - ants - hornets*  
*fleas - cockroaches - bed bugs - pigeons - magpies*  
*rabbits - rats - mice - moles - squirrels - foxes - mink - feral cats*

**UNMARKED VEHICLES**

For further information please call  
or email [a.mcclelland\\_pestcontrol@hotmail.co.uk](mailto:a.mcclelland_pestcontrol@hotmail.co.uk)



**Tel: 01525 221847**  
**sales@act.uk.com**





**GENERALMECHANICALSERVICESLTD**

*VEHICLE SERVICING AND REPAIRS*

A local, honest reputable garage run by Mart & Ollie  
which is independently approved by "Motor Codes  
Approved Practice" and the RAC

## **MOT's Cars, Vans & 4x4 servicing**

**Tyres  
Cambelts  
Diagnostics  
Batteries  
All mechanical work  
Welding and Fabrication  
Horseboxes  
Specialist in Land Rover**

**Call now for a free quote**

# **01525 222876**

**1 Honeywick Lane, Eaton Bray, LU6 2BJ  
[www.general-mechanical-services.co.uk](http://www.general-mechanical-services.co.uk)  
[reception@general-mechanical-services.co.uk](mailto:reception@general-mechanical-services.co.uk)**



*St Mary's Church,  
Edlesborough  
will be open from May  
until September on the  
first Sunday in the month  
from 2pm to 5pm*

## Classical Guitar Concert

by students of Dario van  
Gammeren

12 July, 6:30pm

St Mary's Church, Church  
Road, Studham, LU6 2NW

Free admission, donations accepted  
in aid of Cancer Research UK

Call 07791110313 or check [www.  
dariovangammeren.com/events.  
php](http://www.dariovangammeren.com/events.php) for information

## Play Around The Parishes 2014



Dagnall Village Hall is once again funding  
Play Around the Parishes for Dagnall  
Children (age 4+) at  
the Recreation Ground

Friday, 1 August, 2-4pm

Wednesday, 13 August, 2-4pm

Thursday, 21 August, 10-12noon

Come along and enjoy games, play equipment, giant  
games, soft play etc.

Children must not be left unsupervised  
See Posters around the Village for more details

## Quiz Night

6th September  
Eaton Bray Village Hall

. Tickets £9 per person  
including a meal  
Bring your own drinks  
and glasses

Make up your own team of 6-8  
or we can find you a team if  
you're on your own

Email [jamboree@centreboard.net](mailto:jamboree@centreboard.net)  
for tickets

Fundraising for Gemma  
Johnson's Scout Jamboree



David Brown

## Window Cleaning

Quality Reliable Service.

Regular, Occasional or  
Single Visits.

Friendly Free Estimates.

Facias, Guttering & Conservatories.

External Cleaning & Maintenance.

Fully Insured.

Phone **01582 472113**

Mobile **07534 837073**

## D & E HINES

High-Class Butchers

Quality Beef, Pork & Lamb

Grade A Poultry

BBQ & Sausage Speciality

Renowned for 'Bunkers Sausages'

Telephone: 01525 220413

98 High Street, Eaton Bray

## IRON OUT

Complete Laundry Service

Shirt Service

Duvet Cleaning

Ironing

Free collection & delivery from  
home or office

01582 667332 / 07885 320042

Email: ironout@aol.com



STOCKISTS FOR



GUTTER BRUSH

**- All aspects of Pressure Washing -  
Roof Cleaning / Coating specialists**

- Safe cleaning system using rope access
- Roofs cleaned using 'controlled' pressure washing
- 'Cleaning' water recycled

For before and after photos please visit:

<http://www.facebook.com/greatoutdoorsandin>



**0800 298 5883**

[www.greatoutdoorsandin.co.uk](http://www.greatoutdoorsandin.co.uk)



# Dagnall School



**A Buckinghamshire co-educational school**

**For 4-7 year olds**



Dagnall School offers small class sizes, an exciting curriculum, excellent care and support and good links with the local community



Ofsted 2011  
"Pupils are confident,  
very happy at school  
and curious to learn."



Tel: 01442 842473



[www.dagnall.bucks.sch.uk](http://www.dagnall.bucks.sch.uk)

E-mail: [office@dagnall.bucks.sch.uk](mailto:office@dagnall.bucks.sch.uk)

## G.N.C Wall & Floor Tiling

Covering all aspects of tiling from  
Natural Stone & Porcelain to ceramics



[gnctiling@hotmail.com](mailto:gnctiling@hotmail.com)

Providing assurance & attendance through to  
completion of works

For a free full & comprehensive quotation  
please call Colin Bell

07725 033017

01525 222094

## D.A. Windows Doors & Conservatories

23 Church Lane, Eaton Bray, LU6 2 DJ

Tel: 01525 221051 Mobile: 07801 798387

email: [mimcavinder@hotmail.com](mailto:mimcavinder@hotmail.com)

AUTHORISED  
SWISH INSTALLER  
WITH OVER 20  
YEARS  
EXPERIENCE

Installation of PVCu windows, doors and conservatories  
Replacement glass units and window maintenance

QUALITY PRODUCTS - QUALITY WORKMANSHIP -  
REASONABLE PRICES



General building  
maintenance work  
also undertaken  
including:  
Facias and Soffits  
Gutters  
Fencing

Accredited Member of the  
Incorporation of Plastic  
Window Fabricators and  
Installers Limited

# Eaton Bray Village Hall



- ❖ Equipped to support theatrical productions and film shows
- ❖ Large car park
- ❖ Large Kitchen with a six ring cooker, large refrigerator, hot trolley, crockery etc.
- ❖ 3 separate areas to hire to meet your needs and budget
- ❖ For more information and brochure please ring Norman on 07975 797202

- ❖ Superb venue for weddings
- ❖ Fantastic place for parties and dances
- ❖ A must for children's parties, can fit the bouncy castle inside if weather dictates!!!
- ❖ Keep fit groups
- ❖ Ideal for Club meetings or functions





local people working for you

OUR COMMITMENT TO YOU

30day challenge

...TO SELL OR LET YOUR HOME - OR WE WILL REDUCE OUR FEE...

Lettings 01525 371997 Sales 01525 377733  
www.mandmproperties.co.uk

\*30 day challenge is for a limited time only. Terms & conditions apply. Please ask a member of staff for details.



# The Gentleman Gardener

Let your local RHS qualified gardener make your garden beautiful, from simple garden maintenance to total redesign of your garden.

Please call Barry on  
**01525-222451 or**  
**07541196384**

to pop round for a free chat.



All things for your dog, sold locally.

Come and see us in our shop –  
Unit 7B, Sparrow Hall Farm, Leighton  
Buzzard Road, Edlesborough, LU6 2HP.

Or check out our website –  
[www.completecanine.co.uk](http://www.completecanine.co.uk)

And get free local  
delivery at a time  
that suits you.



**Tel- 07854 102669**

**Email- [info@completecanine.co.uk](mailto:info@completecanine.co.uk)**  
**Check web site for opening times.**

We now have resident dog groomer, Julie,  
from Heads & Tails. Phone 07836 240467 for an  
appointment.

## Dog Behaviour & Training



# LawesPaws

Your dog on the right track

Professional help for you and your dog

Owning your dog should be a joy – if you are not  
finding this the case - let LawesPaws help

**Vicky Lawes ACFBA MGoDT (MT)**  
CANINE BEHAVIOUR CONSULTANT & MASTER TRAINER

Experienced, professionally trained & in  
the comfort of your own home

Web: [www.lawespaws.co.uk](http://www.lawespaws.co.uk)  
Mob: 07765 287176  
E: [vicky@lawespaws.co.uk](mailto:vicky@lawespaws.co.uk)

# Edlesborough School & Pre-School



*Pupils' behaviour is outstanding...*

*The environment for learning is exciting and stimulating...*

*A real strength of the school is pupils' attitude to their learning .*

*Ofsted 2013*

For more information about our School, Pre-School and Before and After School facilities, visit our website at [www.edlesborough.bucks.sch.uk](http://www.edlesborough.bucks.sch.uk)

Please contact the school on 01525 220431 to arrange a visit.



**SECURITY  
SYSTEMS  
LIMITED**

## MJ Security Systems

Contact Us For More Information

Unit 4, Arianne Business Centre,  
Blackburn Road,  
Townsend Industrial Estate,  
Houghton Regis,  
Bedfordshire,  
LU5 5DZ

Please call for a free quotation

**T: 0800 0856126**

**E: info@mjsecurity.co.uk**

**W: www.mjsecurity.co.uk**

# Protecting what's important

## MJ Security Systems Ltd



**FROM ONLY  
£439.95+VAT  
Products and  
Installation**

**Kit includes:**  
1 x Wireless Door Contact, 2 x Wireless  
P.I.R., 1 x Wireless Sounder, 2 x Remote Set  
and Unset Fobs.

**Stylish • Wireless • Secure**

**We also specialise in:**

- IP Cameras
- Intruder Alarms
- Access Control
- CCTV & Monitoring
- Door Entry
- Covert Cameras
- Security Lighting



**Local family run business - Not a franchise**

All chemicals used are Eco-friendly, non-toxic, non caustic and non allergenic  
**All work guaranteed and fully insured**

**All products are Child, Pet and Pregnant Safe**

- Ovens & Hobs
- Extractor Hoods
- Microwave Ovens
- Agas
- Fridges
- Carpets
- Rugs
- Upholstery
- BBQs
- Freezers



**01525 22 19 22 or 0800 122 3393**

**www.ecotechovenandcarpetcleaning.co.uk**

**info@ecotechovencleaning.co.uk**



# RD ELECTRICAL

Specialising in all types of Electrical and Air Conditioning installations including:

- ◆ Inspection and Testing
- ◆ Garden and security lighting
- ◆ Energy efficient lighting
- ◆ Re-wires
- ◆ Specialist lighting – bespoke designs
- ◆ Kitchen and Bathroom specialist

Air conditioning throughout your home  
All work guaranteed.



**Call Richard on:**  
**01525 221475**  
**07932 759680**



For a no obligation quote

**TEL: 01582 667924**



13185

**"Good reputations take years to build"**

## ***GRAHAME PRATT***

**Plumbing & Heating Engineers**

Plumbing & Heating  
Bath & Shower Room Design and Installation  
Ceramic Floor & Wall Tiling  
Kitchen Installation  
Small Building Works

**[www.grahameprattplumbing.co.uk](http://www.grahameprattplumbing.co.uk)**

Email - **[enquire@grahameprattplumbing.co.uk](mailto:enquire@grahameprattplumbing.co.uk)**

# M . P . S

Maintenance & Property Services

- KITCHENS AND BATHROOMS
- PAINTING AND DECORATING
- PROPERTY RENOVATIONS
- PLASTERBOARDING
- FENCING

FREE ESTIMATES

NO CALL OUT CHARGE

NO JOB TOO SMALL

LOCAL

Contact:- Julian

**07958 306301**

E-mail – [mps@mustoe.co.uk](mailto:mps@mustoe.co.uk)

[www.mustoe.co.uk](http://www.mustoe.co.uk)



## Established Village Dog Grooming Service

Professional and Affordable  
Large breeds welcome

Trained in Hand Stripping  
Nails, Ears and Glands included

Contact Ulrika Tel 01525 211592  
5 Mill Road, Stanbridge, Beds. LU7 9HX  
[www.abfabgrooming.co.uk](http://www.abfabgrooming.co.uk)

## Spinney Landscapes & Gardening Services

*All Aspects of Grounds Maintenance*

Weed Control • Driveways & Patios  
Lawn Care & Scarifying • Fencing  
Turfing • Tree Work  
Snow Cleaning & Gritting

**Tel: 01582 872084 Mob: 07876 500292**

**Email: [chambo.1628@btinternet.com](mailto:chambo.1628@btinternet.com)**



## Francis House Preparatory School



## The Best Start They Could Wish For

AT FRANCIS HOUSE WE ARE PROUD to offer our pupils a safe, caring and happy environment that fosters a love of learning.

Each one of our pupils is able to reach their true potential whilst enjoying a broad range of academic subjects, sporting and gymnastic opportunities, together with a wide range of extra-curricular activities including dance and music. Teamwork and achievement are encouraged and rewarded, as are friendliness and generosity.

FRANCIS HOUSE is a Hertfordshire town school with a countryside setting overlooking the Chilterns. It is positioned on the edge of Tring but with easy access to the A41. Francis House is a day preparatory school for girls and boys between the ages of two and eleven whereour Nursery and Kindergarten (Pre-Preparatory) are an integral part of the school.

FRANCIS HOUSE SCHOOL NURSERY now takes boys and girls from the age of two years during term time from 8.00 am – 6.00 pm.

Our dedicated and experienced staff, maintain an excellent staff/pupils ratio, with small class sizes that enable our pupils to properly prepare for the rigours of the next stage of their education.

Aylesbury Road, Tring, Herts HP23 4DL

T: 01442 822315 E: [info@francishouseschool.co.uk](mailto:info@francishouseschool.co.uk)

W: [www.francishouseschool.co.uk](http://www.francishouseschool.co.uk)

| An Independent Day School for Boys and Girls aged 2 to 11 years |



## It's time to say Farewell

I would like to say thank you to everyone in the villages who welcomed me 3½ years ago when I arrived in Eaton Bray and Edlesborough to be the Salvation Army minister here. Thank you too to so many of you who asked about my Waterways Chaplaincy ministry and actively supported that in so many ways. Time has moved on and I am now retiring. I retired from the Waterways Chaplaincy at the end of April, saying goodbye to a team of ecumenical chaplains who had grown in number from 3 to 20 in that period of time. God is amazing when we put our trust in him and let him do the guiding and preparation. I have had some wonderful experiences, been in humbling situations and just been in awe of the way people gave me their trust.

For the Salvation Army church in the area it is a time of transition. As I write this, there is no confirmation that there will be a replacement for me, even part-time, although there is a lot of work going on to find a replacement before my final service on Sunday 6th July. Living in the villages has been wonderful because it has reminded me so much of my upbringing on the Isle of Portland, another village community. As I move to Bedford I will miss the fields, the sheep (and the tractors). Most of all I will miss the people, the friendships that have grown and the way in which all the churches in the area work together. That does not happen everywhere so to have congregations who are a part of each other in many respects has been wonderful.

When I went to College in London to train as a Salvation Army minister, the scripture that I took with me was from Jeremiah 29: *For I know the plans I have*

*for you,” declares the LORD, “plans to prosper you and not to harm you, plans to give you hope and a future. 12 Then you will call on me and come and pray to me, and I will listen to you. 13 You will seek me and find me when you seek me with all your heart. 14 I will be found by you,” declares the LORD, “and will bring you back from captivity.*

Well I haven't been in captivity but have experienced work in many different situations since taking up my ministry. I was responsible for running an Emergency Response vehicle in London for 2 years and serving the emergency services at Russell Square tube station following the 7/7 bombings. I have lived and worked in the multi-cultural and multi-faith area of Hayes and learned so much about people's attitude to faith and been able to share in prayer with people of many different faiths. It has also been a privilege to be a Hospital and Airport chaplain during my service. So, the next time you see a Red Shield envelope come through your door with Focus, please remember the work that is carried out day in and day out by people like me and many volunteers, serving the community wherever there is a need – for people of faith and people of no faith. What lies ahead in retirement I have no idea, but I am sure God does!

Thank you for your acceptance. I hope that a replacement will be found for my position. In the meantime please note a change of telephone number to 01525 222087.

✉ Captain Jenny Dibsall



# Our Ugandan Journey

Hi there,

We are the Spence family children; Rose, 23, Natalie, 21, and Ollie, 16 and we go to St Mary's church in Eaton Bray. In July of this year we are travelling as a family for a few weeks to a remote area of northern Uganda, called Kumi and we would like to share what we expect to be a life-changing story with you.



Tyrone and Angela Spence with children Ollie, Natalie and Rose

“Travel is fatal to prejudice, bigotry, and narrow-mindedness, and many of our people need it sorely on these accounts. Broad, wholesome, charitable views of men and things cannot be acquired by vegetating in one little corner of the earth all one's lifetime.” – Mark Twain.

We believe passionately in the above quote by Mark Twain. We are a well travelled family, demonstrated by Dad cycling the breadth and depth of the Himalayas, China, Vietnam, Costa Rica and Brazil for charity, Nat joining a team on Batiki island in Fiji to build a community hall, Rose visiting Baalbek in the Hezbollah controlled region of southern Lebanon and visiting Mother Theresa's Orphanage in India, not to mention Ollie visiting all five continents by the time he was five! We firmly believe that this exposure to different parts of the world has prompted our call to help those less fortunate.

The reason we have chosen to embark

on our Ugandan journey is because, put simply, we want to make a difference. We realise how fortunate and blessed we are, and want to use our talents to reach out and touch the lives of the less fortunate. The Christian charity Mission Direct has facilitated our hunger to make a difference and is supporting a project this year in Kumi, which involves building a school classroom.

Kumi's population was decimated by civil wars and the HIV/AIDS pandemic. As a result, there is now a generation of orphans; children without families or security. These children are desperate for an education to alleviate the poverty they are suppressed by. Team Uganda, which consists of the five Spences, the girls' boyfriends Rob and Morgan and three other volunteers, will be collaborating with a primary school called Kumi Township. This school provides an opportunity for education, though not the sort of education you and I have been privileged enough to experience. At present, Kumi Township accommodates a staggering 150 children per classroom! The school does not have the capacity or resources to cater for so many children, so eager to learn. This is where our fundraising and input is critical. We will be turning our hands to cementing, brick laying, digging and crafting to build an additional classroom, for which an extra teacher will then be appointed.

Aside from the hours designated to the main project we will be helping to reconstruct the collapsed roofs of the schoolteachers' mud huts, decorate a healthcare centre and lead worship and prayer at the local prison.

The Spence family has been enthusiastically fundraising to help fund the project. This has involved everything



*Kumi Township classroom*

from utilizing talents to learning skills we thought we never had. As a close-knit extended family, we have come together to make a brilliant team and allow wonderful things to happen. Some of the fundraising efforts have included a musical soiree evening, head shaving and a karting event. However, no sum is enough, and so the fundraising continues...

We expect the trip to transform the lives of the children at Kumi Township as well as our own. We anticipate hard work and exhausting days, cold showers, no WiFi as well as a culture and reality shock. However, we expect the sunny outlook and resilient nature of the local people to drive us closer to delivering our promise. If you are inspired by our story and our Kumi plans, you can donate today by visiting our donate webpage <https://mydonate.bt.com/fundraisers/rosespence> We plan to take a lot of aid out with us, if you can support by donating any school classroom type materials, particularly stationary including pencils, rubbers, sharpeners, rulers and pencil cases, please contact [tyrone.spence@btinternet.com](mailto:tyrone.spence@btinternet.com) PS. Look out for our second article on our return, telling you all about our Kumi venture!

## **Eaton Bray Methodist Church**

May opened with a rousing sermon by John Enejo on spreading the message of Christ. On the second Sunday in May, in our Cafe Worship Service led by Richard Armiger, we focused on the figure of Jesus the Shepherd and the need to train ourselves to recognise his voice, just as the flock knows and responds to the voice of the shepherd who leads them. In this way we can find much-needed spiritual refreshment and renewal.. The following Sunday, in celebration of their Anniversary the Sunday School treated us to a delightful service. Under the title “Who is Jesus?”, in a series of dynamic interviews with people and powers who had been part of Jesus’s life, the children gave us insights into the character of the Saviour and his relationship with mankind. Our warmest compliments to the children on their impressive and entertaining presentation and a big vote of thanks to our dedicated and

hard-working Sunday School staff who led them.

The Saturday Cafe Community in May was a lively and enjoyable occasion with a lot of visitors and raised significant funds for Christian Aid. We are grateful to all those who helped to make it such a success.

Our Annual Garden Fete at Chestnut Lodge, Great Billington on June 7th was a great success – miraculously so! As we were preparing in the morning the rain lashed down but, by midday, the skies had cleared, the sun came out, friends and supporters arrived in unexpectedly large numbers and a good time was had by all. A delicious lunch was served and together with our produce stalls raised almost £700 for the nominated charity, Cancer Research. Many thanks to all those who gave so generously of their time and energy,

# Edlesborough Parish Council News

## Including Edlesborough, Dagnall and Northall

### Parish Council meeting – dates and venues

17th July 2014 Parish Council Meeting commencing 7.30pm at Edlesborough Memorial Hall

18th September 2014 Parish Council Meeting commencing 7:30pm at Edlesborough Memorial Hall

On Thursday 15th May Edlesborough Parish Council held their AGM followed by the Ordinary Parish Meeting. Below is a summary of the two meetings, the full minutes can be found at [www.edlesborough-pc.gov.uk](http://www.edlesborough-pc.gov.uk)

### AGM Report

Cllr Alan Williams was voted as the new Chairperson for the Parish Council with Cllr John Wilkinson continuing in the position of Vice-Chair. Cllr Kevin Cabbage was thanked and praised for all his hard work and dedication to the Parish Council.

Cllr Wilkinson who is currently the Parish Councils' planning representative for the entire Parish, agreed to continue but felt that representatives from Dagnall and Northall should be involved and take responsibility for reviewing planning applications in their own villages.

### EPC Meeting

#### Pot Holes

The numerous potholes and condition of the roads and pavements around the Parish continue to be regularly reported to Transport for Bucks. The Council encourages Parishioners report issues directly to Transport for Bucks via the website [www.buckscc.gov.uk/telltfb](http://www.buckscc.gov.uk/telltfb) or by ringing the fault reporting line on 0845 230 2882.

#### Grass Cutting

Grass cutting within the Parish was

discussed at length in particular the reduction in the number of cuts per year.

#### Memorial Hall

Usage of the Memorial Hall continues to grow with a new Yoga class on Thursday mornings. For more information about this or other classes using the hall please see the Noticeboards or contact the Manager.

Councillors agreed to change the Memorial Hall energy supplier to British Gas for the next twelve months.

#### The Green & Pavilion

Now that the football season has ended repairs will be carried out to the adult goal mouths. These areas will be temporarily fenced off to allow the grass to regrow and to protect the repair work.

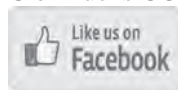
Councillors agreed to change the Pavilion energy supplier to British Gas for the next twelve months.

#### Streetlights

Several lights have been reported to the technician for repairs. Please remember to report any faulty streetlights to the Clerk (details below) NOT AVDC or Bucks CC.

#### Facebook

Edlesborough Parish Council now have their



own Facebook Page. It is hoped that the Facebook Page will be another way to communicate with the Parishioners and enable Parishioners to see:

- Updates about the work the Council is doing.
- Information about upcoming meetings.
- What is being discussed at a public meeting.
- Photographs of what is happening in the area.

The page can also be used to report problems such as faulty streetlights to the Council or to ask questions.

## Contact Information

Manager of Edlesborough Memorial Hall,  
Pavilion, Playground & Green:

Penny Pataky 01525 229358

Email: [manager@edlesborough-pc.gov.uk](mailto:manager@edlesborough-pc.gov.uk)

Clerk to Edlesborough Parish Council:

Clerk: Penny Pataky 01525 229358

Email: [clerk@edlesborough-pc.gov.uk](mailto:clerk@edlesborough-pc.gov.uk)  
Responsible Finance Officer/Planning to  
Edlesborough Parish Council:

Lin Sargeant: 01525 220859

Email: [rfo@edlesborough-pc.gov.uk](mailto:rfo@edlesborough-pc.gov.uk)

Website: [www.edlesborough-pc.gov.uk](http://www.edlesborough-pc.gov.uk)

## Grace Baptist Church

Don't miss the free holiday special sponsored by Grace Baptist Church, Moor End.

The event features age-related Bible talks and quizzes with child's choice of football coaching or craft, games and music.

We invite children from school years 1 to 6 to participate in two half days of learning, activity and fun on Wednesday and Thursday mornings, the 27th and 28th of August from 9.30 to 12 o'clock.

Then on Sunday, 31st August everyone is welcome to join us for our family service from 11-12 o'clock followed by a BBQ lunch at Grace Baptist Church.

Christians trained in accordance with the Grace Baptist Church child protection policy will be running the club.

Places are limited so pre-registration is essential. And remember the event is free.

To pre-register or if you have any questions please ring 01525 229610 or e-mail [alisterbarrett.king@googlemail.com](mailto:alisterbarrett.king@googlemail.com) or [francesruthking@gmail.com](mailto:francesruthking@gmail.com).

Look out for more information about the Friday Kids' Club beginning the 5th September running from 6-7pm for children in years 1 - 6. We look forward to seeing you.

Why not check out our Facebook page for more information?

Grace Baptist Church

Moor End

Edlesborough

LU6 2HN



## Operation Christmas Child



Last November St Mary's Sunday school sent 15 boxes to Operation Christmas Child. Our boxes were sent to disadvantaged children in Romania and were gratefully received by children there.



We are hoping to send even more boxes this year.

We will be holding a coffee morning in early September when donations for the boxes can be made – these can be financial (to help cover the cost of shipping) or things to fill the boxes – look out for

details in the next Focus.

We are holding a "packing party" on 28th September. Everyone is welcome to come and help wrap and fill the boxes ready for delivery to Operation Christmas Child.

Full details of what is acceptable are on the website <http://www.samaritans-purse.org.uk/operation-christmas-child>

Please contact Anne Johnson on 07957 250682 or [sales@samssimplescience.co.uk](mailto:sales@samssimplescience.co.uk) if you can help or for more information.

# Eaton Bray Parish Council

## Highlights of the Minutes

### Annual Parish Meeting/Annual Meeting of Eaton Bray Parish Council Held on Monday 12th May 2014 from 7pm at the Coffee Tavern

#### Public Open Forum

Items brought to the Parish Council's attention:

1. Concerns were raised with regard to Japanese Knotweed within the stream in The Comp. *This is the landowners responsibility, residents have been written to and advised to action accordingly*
2. In the Rye Ground, there is an area by the Sycamore tree that has become untidy. *The council will get the Ground Maintenance contractor to assess the area; however the PC will be looking more fully into the landscaping of this area once the Pavilion is demolished.*
3. The Rye Ground play area – there is a problem with dog mess, would the council consider fencing off this area? *An issue, as previously raised by residents in the area, would be the fencing off of an area within a village green and costs involved.*
4. Speed limit on parish roads – would the PC look into the option of applying to CBC to get the main roads through the village reduced to 20mph. *The PC to look in this further.*
5. Concerns with overgrown vegetation alongside road junctions – visibility problems. *These are CBC responsibility; the PC will contact Highways with concerns.*

#### Accounts For Year Ending 31 Mch 2014

The Clerk, as RFO, reported that parish council year end accounts have been completed, ready for approval at the Annual Meeting of Eaton Bray Parish Council on 12th May 2014. The final accounts were signed off by the Internal Auditor on the

8th May 2014, once approved by the Parish Council the accounts will be forwarded to the external auditors for 30th June 2014.

#### Election Of Chairman

Cllr. Johns was elected as Chairman of the Parish Council.

#### Central Beds Council (CBC)

Website: [www.centralbedfordshire.gov.uk](http://www.centralbedfordshire.gov.uk)

Customer Services: 0300 300 8302 / Email: [customers@centralbedfordshire.gov.uk](mailto:customers@centralbedfordshire.gov.uk)

A detailed list of services provided by CBC can be found by visiting:

<http://www.eatonbray.com/parish-council/files/central-beds-a-to-z-of-services-2014.pdf>

#### Bedfordshire Police:

Crime Type	Recorded Crime		
	01/04/13 to 31/04/13	01/04/14 to 31/04/14	% Change
Domestic Burglary	0	2	+2
Burglary Other	0	0	0
Vehicle Crime	1	1	0
Other Theft	1	1	0
Criminal Damage	0	1	+1
Drugs	0	0	0
Other Notifiable Offences	0	0	0
<b>Total</b>	<b>2</b>	<b>2</b>	<b>+3</b>

#### Additional Comment:

There have been 7 ASB incidents due to children playing in and around School Lane and breaking the trees in the park area.

#### News from the team

(2.1) Vehicle crime, visit the following link where you can find some crime prevention advice - [http://www.bedfordshire.police.uk/pdf/advice\\_vehicle\\_crime\\_cro2012.pdf](http://www.bedfordshire.police.uk/pdf/advice_vehicle_crime_cro2012.pdf)

(2.2) If you wish to contact your Local Policing Team then please call 01582 473411 or email [LPT.LeightonBuzzardLinslade&Rural@bedfordshire.pnn.police.uk](mailto:LPT.LeightonBuzzardLinslade&Rural@bedfordshire.pnn.police.uk)

All information is confidential and no



names will be disclosed. Please remember if you need to contact the Police: **Non-emergency call 101 / All emergencies 999**  
**The White Horse Public House**

Eaton Bray Parish Council put forward a nomination for The White Horse to be listed as an Asset of Community Value, the decision has been made and the application has been accepted. Therefore the public house will now be listed as a community asset and can be viewed on a list via the following link:

<http://www.centralbedfordshire.gov.uk/council-and-democracy/local-government-in-central-bedfordshire/localism.aspx>

### **Bower Lane Cemetery**

The Parish Council have agreed to increase their cemetery charges, to take effect from 1st June 2014.

### **Bus Shelter**

The bus stop, previously known as The Five Bells, has been renamed The White Horse Bus Stop; in addition the Parish Council have agreed to improvements to this bus stop as part of the village improvement scheme.

### **St. Mary's village carnival, Saturday 5th July 2014**

Once again, Eaton Bray Parish Council will be present at the St. Mary's Village Carnival on Saturday 5th July 2014. Please

do take the time to visit us.

### **Standing Orders/Financial Regulations/ Risk Assessment**

The Parish Council adopted the Standing Orders, Financial Regulations and Risk Assessment for 2014.

### **Accounts For Year Ending 31st March 2014**

The Clerk distributed details of the accounts for the Annual Return. It was agreed to approve the annual accounts, the Chairman signed the accounts on behalf of the Parish Council.

### **Next Eaton Bray Parish Council Meeting Monday 7th July 2014; 7:30pm at The Coffee Tavern (1st floor)**

### **Parish Council Website:**

[www.ebpc.co.uk](http://www.ebpc.co.uk)

For full detailed copy of the minutes for Eaton Bray Parish Council please visit the Parish Council website.

A hard copy of minutes can also be viewed on the Parish Council's notice board at The Coffee Tavern.

Heidi Head, Parish Clerk & RFO

Email: [clerk@ebpc.co.uk](mailto:clerk@ebpc.co.uk)

Telephone/Fax: 01525 221464

Website: [www.ebpc.co.uk](http://www.ebpc.co.uk)

Office Hours: Tuesday/Thursday/Friday  
09:30-13:30hrs [messages can be left on answerphone]

## **Letter to the Editor...**



*Dear Editor*

*As many people will know, I co-ordinated a collection for Alan Foster, who retired in May, having been a postman (and prior to that a milkman) in our villages for many years. The total sum raised was £770, which was presented to him at a 'leaving do' at The Swan in Northall. I would like to thank everyone who helped with the collection, in particular everyone at Giblin Estate Agents and The Swan, who acted as collection points. Thank you also to everyone who helped to disseminate information about the collection, via Facebook and email, in person and through dropping leaflets through people's doors.*

*With warm regards*

*Priscilla Dorrance*

# Eaton Bray Lawn Tennis Club



There is a lot happening at your favourite Eaton Bray based tennis club over the summer months – a club where an entire family can enjoy unlimited tennis for just £3 a week (and new members get their first year at half price)! By the time you read this, our Play Day will have taken place, so watch this space for a full report next time, including what mischief Billy our Ball Machine got up to. We have another Round Robin coming up in early July, closely followed by our annual, infamous Chairman’s BBQ, where the Chairman invites all members (for a small fee...) round to his garden to party away the afternoon with copious amounts of cheap wine, beer, squashes, steaks, chicken, salads, and anything else that was on special offer at Aldi that week. Being management, he always ‘manages’ to delegate the actual cooking to the first unsuspecting guest that arrives; most of us are wise to this now and arrive half an hour after the advertised time, thus avoiding any work and meaning we don’t go home hungry and reeking of charcoal smoke.

Then we have a Junior tournament the following weekend, another Round Robin, then the highly popular Tennis Camps for the juniors over the holidays. These are great fun; if you’ve never tried playing tennis in a tent, it’s worth watching. Serving an ace in a three foot high ridge tent is an art unto itself. This is all capped off by our Senior Final’s day in September, the culmination of weeks of cut throat competition amongst our fiercely competitive members, all to see who will have bragging rights to the various silver cups for the next twelve months. Dinner party guest; ‘what’s that little silver egg-cup thing on your sideboard with the two large 500 watt spotlights directed upon

it’? Host; ‘oh that, it’s just a little something I won by being the fourth runner-up in the knock-out plate for the first round losers in our local tennis club championship, where my partner and I won a very close encounter in three sets ending with a tie-break in the third, where we triumphed 23-21 in fading light after our opponents gave up the fight due to one of them having to go to work on nights’. Guest; ‘how exciting, you must be really proud’. Host ‘I don’t like to talk about it’. You’ll have read last month about our fabulous regenerated clubhouse, which is already hosting post match teas for our matches against other South Beds clubs. Well, being the progressive club that we are, we are now on Facebook where you can follow the exploits of our teams and hear the latest news. Just search for us, and don’t forget to ‘Like’ us! But nothing surpasses our new revamped website, which offers a staggering plethora of information about the club including lots of details on coaching, trial sessions and both junior and senior social playing times. There are even all our old newsletters going back to early 2006, just after the computer was invented. There are full membership details and a ‘contact’ page, so do have a peep on [www.ebltc.org.uk](http://www.ebltc.org.uk) and, as they say, ‘read all about it’.

For any further information about the club, including when we get together for our social tennis sessions up at the School Lane courts, or our various activities, you can visit our website at [www.ebltc.org.uk](http://www.ebltc.org.uk); Alternatively please call Chairman Stuart Adolph on 07773 816320, Coach Sara Leavy on 07561 571578, or if they’re all out and I’m not showing off my latest cup, then me, Andy Cross, on 07783 667338.

---

# Edlesborough

Post Office & Stores

---

## YOUR LOCAL VILLAGE STORE

.....

### POST OFFICE HOURS

**Mon to Fri – 9am to 5.30pm / Sat – 9am to 12.30pm**

No lunchtime closure. Closed on Bank Holidays

- Inland and Overseas Parcel Services
- Road Tax
- Foreign Currency
- Moneygram
- Personal & Business Banking (applicable accounts)
- Bill Payments

### SHOP HOURS

**Mon to Sat – 5am to 8pm / Sunday - 5am to 1pm**

Open Bank Holidays to 5.30pm

### Home Newspaper & Magazine Deliveries

Edlesborough, Eaton Bray, Totternhoe, Slapton, Northall, Stanbridge,  
Tilsworth, Marsworth, Ivinghoe

- National and Health Lottery
  - Free ATM
  - Monthly Promotions in Store
  - Mobile Phone, Electric and Gas Top Ups
  - Fresh Bread and Cakes (orders taken)
  - Fresh Fruit, Veg and Local Produce
  - Off Licence (offers in store)
  - Greeting Cards and Stationery
  - Laundry and Clothing Repair Service
- .....

High Street, Edlesborough LU6 2HH

T. 01525 220381 E. [edlesboroughstores@hotmail.co.uk](mailto:edlesboroughstores@hotmail.co.uk)



## Registered Freelance Riding Instructor

Just moved into the area and teaching within a 10 mile radius of Edlesborough.

Teaching private clients on their own horses.

Experienced teaching all levels of ability, age and discipline.

Fun, enthusiastic and confidence giving.

Kate Broadway BHSAI

01525 792562 07841 053159

## JAMES FALCON-CROSS LANDSCAPING AND OUTDOOR LIVING DESIGN



**ALL ASPECTS OF  
LANDSCAPING UNDERTAKEN**

**INCLUDING FENCING,  
TURFING AND RAISED BEDS**

**TIMBER STRUCTURES  
DESIGNED AND BUILT**

**VEGETABLE AND HERB  
GARDENS**

**BESPOKE WOODEN FURNITURE**

**FREE ITEMISED QUOTATIONS**

**FULLY INSURED**

**01442 843258 / 07769 901325**

**ONECROSSFALCON@GMAIL.COM**

## Bill Bowman Photography

Weddings - CD from £500  
to stunning Italian Albums

Family Portraits,  
Babies, First  
Birthdays,  
Parties, Pets

Free sittings  
Packages  
from £25



Tel: 01582 873338  
email: bill@hccs.co.uk  
www.billbowman.co.uk  
Teelands, Oldhill Wood,  
Studham, Beds LUG 2NE

## Leighton Aerials

Established 1970

For all your aerial and  
satellite needs call Colin  
on 01525 374742





# EDLESBOROUGH TENNIS CLUB

Website by Jupiterwill

[www.etctennis.org](http://www.etctennis.org)

Play tennis    Have fun    Socialise    Feel good    Join our club

Join via the website, or call Iona McLean-Hall on 01525 220562 for details

Monthly draws

## New 100 Club

Spend £2 to spend a penny

In aid of toilets and other improvements at St Mary's Church, Eaton Bray



Contact: [eatonbraychurch@aol.com](mailto:eatonbraychurch@aol.com) or telephone: 222691

## Eaton Bray Academy

*The staff work exceptionally well as a team to promote children's welfare, learning and development and to make sure everyone enjoys their time at the pre-school. Ofsted 2012*



*Children benefit from the abundant shared resources, access to school assemblies, the information technology suite and the extensive outdoor facilities. Ofsted 2012*

### Pre School



**How many Pre Schools do you know that are part of the Main School?** Well, EBA is *one* School!

All the children wear School uniform, have their own book bag, can attend clubs and even eat our delicious School dinners, cooked on the premises by our own School cooks.

.We believe that quality Early Years education is essential; it is on this that everything is built.

We offer a caring, happy, secure and stimulating learning environment in which the children thrive.

**Come and have a look!**

Tel. 01525 220468 or email [admin@eba.ec](mailto:admin@eba.ec)

*Children clearly benefit and thrive as the accommodation, equipment and resources are well suited for their purpose and conducive to learning. Improvements to the premises and the outdoor area give children the confidence to explore and help all aspects of their development. Ofsted 2012*

# CHIMNEY SWEEP

Local & Est. Brush n Vac  
Friendly, Clean and Efficient

Call **KEVIN HING** on

Tel: 01525 371592

Mob: 07940 528897

[www.khing.co.uk](http://www.khing.co.uk)

Member of NACS



## Cheeky Cherubs Childcare

Tel: 01442 843 846

Mob: 07774 323 439

Children of all ages welcome, from  
birth right though to their teens!

**OFSTED Registered & DBS Certified**

**Nicola Fowler**



**Book Now!**

tel: 01525 223042

mob: 07738 097670

### Dog Walking, Running & Boarding

In Edlesborough, Eaton Bray, Dagnall, Ivinghoe, Northall



#### Dog Walking & Dog Running

Whether your dog needs a one off walk, extra exercise over the weekend or a regular walk, I'm happy to help. I can pick up, walk and drop off your dog on a daily, weekly or ad-hoc basis. I also offer dog running for dogs who need more energetic exercise.

#### Dog Home Boarding

Have your dog come and stay with me in my homely cottage in Edlesborough, where they'll get long walks with lots of love and attention and will be looked after as if they were my own.



**BOOK NOW - contact Kaely on 07738 097670.**

[www.kaelysdoggyhotel.co.uk](http://www.kaelysdoggyhotel.co.uk)



# Beau

HAIR AND BEAUTY SALON

- Unisex hair salon
- Hair Extensions
- Nail Bar
- Wedding, Prom Hair Styling
- Express Eyelash
- Girls Glamour Parties
- Accessories
- Loyalty Cards

**01525 220926**

*3 Summerleys, Edlesborough LU6 2HR*

For lots more offers and news about what is happening follow  
and like us on Beau Hair & Beauty @beausalon

CND  
Shellac™

KOLESTON  
PERFECT

O.P.I

Beauty  
Works  
CELEBRITY  
CHOICE

ghd



# PLUMBING AND HEATING

FOR ALL YOUR PLUMBING, HEATING AND GAS REQUIREMENTS

NOSSITER AND BARNETT LIMITED  
PLUMBING AND HEATING

CONTACT MATT OR JAMIE  
TEL 01525 229524 MOB 07802 270427



Home or Business  
IT Support



Visit Our Website at [www.hobit.co.uk](http://www.hobit.co.uk)

Laptop Repair • Virus Removal • Data Recovery  
Laptop Screen Replacement • Data Transfer  
Wired & Wireless Networks • Broadband Setup  
Backup Solutions • Printing Problems  
Tune Ups • 1:1 Training • Email Problems  
Ipad & Iphone Connectivity Issues  
Computer Upgrades • Free advice

**Call now 01525 378127 or 07702 80 70 90**  
**RELIABLE - PROFESSIONAL - LOCAL**



## LOCKED & SECURE

Keeping your Family, your Home and your Business Protected

**WE SPECIALISE IN THE FOLLOWING :**



**ALARMS**



**LOCKS**



**CCTV**



**ACCESS CONTROL**



**SAFES**

**WE ALSO OFFER**



Free Security Audits  
& Crime Prevention Talks



Please Call NOW or visit our Website for more info  
**FOR ALL OF YOUR SECURITY NEEDS**

**01908 483233**

Serving Northamptonshire, Buckinghamshire, Bedfordshire,  
Hertfordshire and South Lincolnshire.



[www.lockedandsecure.co.uk](http://www.lockedandsecure.co.uk)  
[info@lockedandsecure.co.uk](mailto:info@lockedandsecure.co.uk)

# Come for Coffee at St Mary's

For a warm  
welcome and a  
cheering cuppa  
on the first  
Saturday each  
month in  
St Mary's Church  
Eaton Bray  
10.00am - midday



Are you an elderly or  
housebound resident ?

Would you enjoy a  
monthly (free delivery) fish  
and chip supper ?



If your answer is 'yes' to either of the above questions then please do get in touch.

We run this scheme on the last Friday of every month but need your orders no less than 48 hours prior to this. We have a voicemail facility on our phone if we are not there to speak to you directly. All messages will be confirmed back to you so you know your order has been received.

Please call on **01525 229 656** to place your order

*Ordinary people doing amazing things*







**Some comments from our recent Ofsted report:**

Children are consistently offered a stimulating range of activities and opportunities which enable them to make good progress towards the Early Learning Goals.

Staff have a good understanding of creating a safe and welcoming environment . . .

Staff support children well and encourage them to be active in their learning and to think critically.

We are a committee run playgroup operating five mornings a week 9:15 – 12:15 for children aged 2 to school age.

**If you would like to find out if your child would be happy here, please phone our Playgroup Leader, Ann Tobin on 07816 358 342.**

[www.dagnallunderfives.co.uk](http://www.dagnallunderfives.co.uk)

**Wednesdays**  
**1:00pm to 2:45pm**  
*(during term time)*  
 Eaton Bray Village Hall

**Cheeky monkeys**  
 under fives play time

£1.50 per adult / £1.00 per child / 50p under 1yr

creative play    singing  
 stories        baby corner  
 craft         juice & biscuit  
 tea or coffee    and more!

Come along,  
 make new friends  
 and join in  
 the fun!

**Sheplegh Court  
Nr Dartmouth, South Devon**

Lovely two bedroomed apartment in country house set in 30 acres of gardens, woods and parkland. Facilities available include:

- Heated outdoor swimming pool with sun terrace and barbecue area (summer only)
- Conservatory overlooking the gardens and parklands
- All weather tennis court.
- Snooker room with full size table
- Small indoor pool, jacuzzi and sauna

Secluded position on outskirts of award winning village yet within 3 miles of beaches and Dartmouth Golf and Country Club. Available for weekly letting or for three plus days out of season.

**For further details please telephone 01525 220957 evenings and weekends**

## Chartered Accountants E W Wallace & Co

- Annual accounts
- Tax returns
- Self-employed
- Limited companies
- Small business specialist
- Prompt, personal service
- Value-for-money fees
- Free initial consultation

**01525 220826**

[ewan.wallace@btinternet.com](mailto:ewan.wallace@btinternet.com)

# HARMONY

## Plus

### EXCITING NEW UNISEX HAIR & BEAUTY CLINIC

3D - LIPO (INCH REDUCTION)  
NON - SURGICAL FACE LIFT (CACI)  
SKIN PEELS/SKIN TIGHTENING  
MICRODERMABRASION  
TEETH WHITENING  
BIO SCULPTURE & OPI GEL NAILS  
BROW/LASHES BAR  
TANNING  
SPA/PAMPER PARTIES  
PRINCESS/PARTIES  
HAIRDRESSING EXTENSIONS  
BRIDAL HAIR/MAKEUP  
MALE GROOMING

## 10% OFF FIRST VISIT

ON PRODUCTION OF THIS ADVERT

[www.harmonybeautysanctuary.net](http://www.harmonybeautysanctuary.net)

6A WALLACE DRIVE · EATON BRAY · LU6 2DF

01525 229111 / 07852 145053

IN BETWEEN LEIGHTON BUZZARD & DUNSTABLE



Here to take care of your mucky pup!

- Your local grooming service in Eaton Bray!
- 1-2-1 care for your dog
- NO cages!

Telephone: 07580 343 396

Email: [waggingwonderful@yahoo.co.uk](mailto:waggingwonderful@yahoo.co.uk)



**FULLY QUALIFIED  
ELECTRICAL ENGINEER**

Competitive prices and quality service

Available for all your domestic and  
commercial electrical requirements

No job too small

Call Russell Sears:

**07578 008567**

**01525 220008**

17 Good Intent, Edlesborough

## Edlesborough W.I.

At the start of our last meeting we heard that Mrs Vi Warren would be celebrating her 100th birthday the following month. Several of our members remember the Warren family who ran the Post Office and shop over 30 years ago. A card was signed by those ladies, and subsequently sent to Mrs Warren, who had been a member of the institute all those years ago. Our congratulations and sincere good wishes go to her on a very special day.

We next listened to the details of this year's resolution to go forward to the National A.G.M. This concerns organ donation, the relevant points of which were outlined by Elizabeth. She also reminded us of a few resolutions of past years. These included: 1926 - School Meals Request, 1943 - Equal Pay for Equal Work, 1954 - Keep Britain Tidy, 1964 - Smoking in Public Places, 1970 - Breast Screening. Elizabeth pointed out that, although potential donors sign a register agreeing to their organs being used, the families of the deceased also have to give their permission. Donors should be encouraged to talk with their families so that they are fully aware of their wishes. This

is so important, as many families do not give this permission at present. Age is no restriction in most cases of organ donation, and many people can benefit from one donor. The procedure is completely confidential, and people should be encouraged to sign the donor register and, very importantly, talk to family members about their feelings. Members voted unanimously for the resolution to go forward.

After our views were discussed we enjoyed a cheese & wine supper organised by Ann, assisted by Jenny & Chris.

The following week a number of members enjoyed an excellent conducted tour around the perimeter of Dunstable's Priory Church. We heard of its history at the time of Henry VIII as we walked around and saw the different sites which had housed the original parts of the Priory. It was an extremely interesting tour, and we learned many historical facts. Another Dunstable tour will be attended by members, judging by the enjoyment of this one.

The afternoon ended with a very welcome cream tea.

✍️ Val Harris

## Year 6 does The Apprentice

During the week beginning June 9th the Year 6 pupils at Edlesborough School took part in an "Apprentice" competition. The children formed small businesses, chose a company name and assigned themselves roles. They then chose a product to make and sell. Using the internet they researched costs for the making of their products and we then went shopping to buy our raw materials.

After a week of production, marketing, packaging and advertising the school hall became a market place. Parents, grandparents, siblings, friends and fellow pupils became customers.

The children then had to prepare a presentation to the board, our very own "Lord Sugars", Mr Laurence Freed and Mrs Jenny Peel. The board selected the winning team and awarded a variety of prizes; best business minds, best advertisers, most creative team etc. Although no one was "fired", we did award a Wooden Spoon award to the team who made a loss!

Our Apprentice week was huge fun and incredibly rewarding for the children, who learnt from first-hand experience all about running a business.

# Reports of our Death have been Greatly Exaggerated

South Beds Dial-a-Ride (SBDAR) have received a number of approaches querying whether their acclaimed Dial-a-Ride service is still operating in Luton. Many people seemed to believe, because SBDAR had withdrawn its service from Luton Borough Council (LBC)



*Sbdar minibus outside The Arndale Centre just after dropping off passengers for their weekly shopping trip*

last August, the charity had since gone out of business. “The opposite is true”, claimed Dave Barratt, General Manager of SBDAR. “The very reason for pulling out of LBC was to save the charity so we could continue our good work, as we could no longer afford to subsidise our Luton operations as we had for 2 years previously. To continue to do so would have signalled the end of SBDAR within months”.

Reports of our death have been greatly exaggerated,” Mr Barratt continued, plagiarising Mark Twain’s quotation. “Within days of withdrawing our service from Luton Borough Council we were receiving requests to continue to provide journeys on a charged basis. We have since offered a service to everybody who has contacted us.” SBDAR have now restructured its operations, and with around half the staff, fewer buses, and lower overheads, they are healthy, fit, and expanding again with new services being offered as part of their diversification plan. After sampling Shopmobility’s replacement service, which was replaced weeks later by LBC’s “Interim Service” run by their Passenger Transport Unit,

the passengers’ level of satisfaction was such that SBDAR’s phones were soon ringing again. “Even though there was the alternative of a free service operated by LBC, many appreciative passengers preferred the reliability, punctuality, friendliness and safety of SBDAR, happily

paying towards their fares just like they have wanted to for the past few years”, said Dave Barratt. A council survey had revealed over 90% of customers declared their willingness to make a contribution towards their fares but their wishes had been denied to them in practice.

SBDAR is now approaching its 28th Anniversary and made 22,800 journeys for Luton’s elderly and disabled in the year prior to its withdrawal after years of making losses in the town. “Our revised service cannot provide anything like the same quantity of journeys as the free (to the user) service we used to offer as we simply do not have the same money available, but our quality, reliability and safety are all exactly the same. LBC’s own customer satisfaction survey rated our service at 97.6%. We are still working as hard as ever offering a service to everyone who comes to us”, added Mr Barratt.

Within 7 weeks of the LBC Executive decision in February to cut their commitment to elderly and disabled transport by over 90%, SBDAR had won several new contracts. “These contracts will generate a surplus to fund our Luton operations, which is in excess of the

funding offered by LBC for this type of transport for 2014-15. We are again effectively subsidising our Luton service from money we earn outside the town," Mr Barratt continued, "but now we can do so in a sensible manner and keep our books balanced. We are still here and still offering the premium service available to

the elderly and disabled of Luton who find it difficult to use public transport." For further Information – contact:-  
Dave Barratt  
General Manager, South Beds Dial-a-Ride  
01525 222331  
07973 411176  
admin@sbdar.co.uk

## Thanks

Val Barrow would like to say a big Thank You to everyone who has sent her cards and best wishes whilst she has been in Stoke Mandeville hospital (2 weeks) and

now in Amersham where she is to receive physiotherapy to regain her strength and mobility.

## St Mary's Ladies Guild

Members were welcomed to the meeting and birthday wishes and cards were given for June Morton, Barbara Ilic, Dorothy Bradbury, Joan Leader, Jean Bates, Pam Courtice, Anne Hunt, Fay Smith and Wendy Watson.

Devotions were led by Christine.

Notices were given - the Guild Coffee Morning raised £310 for WaterAid and Deirdrea thanked those who had helped in any way to raise this wonderful amount. Fundraising will continue until December for this project. A speaker from WaterAid came to receive the cheque for the amount raised so far on June 11th, and any other amounts raised will be sent to them in December. A request was made for the envelopes for the Cream Tea at Frosts to be returned to enable final numbers to be confirmed to Frosts. Envelopes were given out for the trip to Gloucester in August. A thank you card from Joan Thorne had been received for the basket arrangement received on her return home from hospital. An orchid plant and card had been taken by Deirdrea to Barbara Ilic in hospital and it was great to see her at the meeting today.

The speaker Bob Keating was introduced

speaking on the Rothschilds of Waddesden Manor. He commenced by saying he had been a Guide at the Manor for 20 years, and would concentrate on the history of the Rothschilds. This was a very interesting and informative talk, covering the time from the 1800s to the present day accompanied by slides followed by a visual journey (slides) and commentary around Waddesden Manor.

Joan Chappell thanked Bob for this amazing presentation.

Tea was served prepared by the committee with a "Maytime" theme and decorated with a Maypole. This was followed by the raffle.

**INSANITY**

*Insanity Fitness  
Classes*

*The new fitness craze, that will  
leave you with INSANE results!  
Get the body you never thought  
you could!*

*Call Michelle for more info:*

*07774093648 or email on*

*mhollick.247@btinternet.com*

*or simply turn up to a class*

*Tuesdays at 10.30am and Fridays at  
7.30pm Edlesborough memorial hall*

# Thank You



Thank you once again for your support with my fundraising; I am on track to pay my next instalment.

My next fundraiser will be a quiz night on the 6th September in Eaton Bray Village Hall. Tickets are now on sale for £9 to

include a meal; bring your own drinks and glasses. Make up your own team of 6-8 or we can find you a team if you're on your own. Please email [jamboree@centreboard.net](mailto:jamboree@centreboard.net) for tickets.

Hope to see you there,

✍️ Gemma Johnson

## Eaton Bray W.I.

Deirdrea welcomed the members to the June meeting.

Birthday cards were given to Vera Pearson and one for Jennifer MacKenzie in her absence. Minutes of the previous meeting were read by Margaret and approved.

Matters arising, most WI's felt the same way about the resolution that is to be discussed at the AGM at the Albert Hall this month. Billington WI would represent Eaton Bray and give their vote.

Coffee Morning on Thursday 12th June, a clipboard was passed around for names to help on the day and provide goods for the stalls. Members took the printed slips with coffee morning details on, to put through neighbouring doors.

Various venues were discussed for an annual outing in August. No decision was taken by the members.

Correspondence, an invite from Dunstable WI for two members to join them for afternoon tea at Putteridge, Linda and Wendy will attend. Leighton Buzzard Drama Group are presenting 'Allo Allo' during July. There were various notices from Bedford Federation giving details of various activities.

The booked speaker was not available, so a warm welcome was given to Ann Ledger, a member of Friends of Priory House and Gardens Dunstable, who showed slides and spoke of Dunstable's Tudor Wall Paintings. The paintings were discovered in 1954

in the upper storey of 20 High St. North, Dunstable, a 16th century Tudor building.

When the premises were substantially renovated for the present branch of the Nationwide Building Society, an amazing effort was made to preserve the paintings. Thirteen panels have survived and are now on display in the Meeting Room at Priory House.

Six of the panels depict a hunting scene and of these the most remarkable is a portrait of a man in Tudor costume smoking a clay pipe. This could well be one of the earliest depictions of tobacco smoking in the country, making the paintings not only locally important but also nationally significant.

Further conservation work is now needed which will then preserve these precious artifacts as part of Dunstable's Tudor heritage and allow the general public access to view these treasures for themselves. Margaret Jones gave the vote of thanks to Ann.

The next meeting is on Monday 7th July when the speaker will be Kathy Reay on 'Jewellery made easy'. Teas Sheila and Valerie. Social time followed with Judy Venn doing the teas and providing lovely home made cake.

The raffle prizes of boxed toiletries were won by Sheila and Susan.

It was still light as we left for home.

✍️ Deirdrea





# Edlesborough Book Group

## Last Friends by Jane Gardam

Jane Gardam, in spite of having written thirty novels over the last twenty five years and having been awarded many literary prizes, is surprisingly not a household name. She has a sharp eye for the foibles of human nature and writes wittily and sympathetically on the ways of the world. Several members of our group have read and enjoyed her books and we decided to read her latest novel. Last Friends is the final book of a trilogy which tells of the lives of two rival international lawyers over the course of fifty years. They are, Sir Edward Feathers, known affectionately as Filth, (an acronym for Failed In London Try Hong Kong), his wife Betty and his rival in love and life Sir Terence Veneering. The first two books Old Filth and The Man in the Wooden Hat, told the back stories of Edward Feathers and Betty respectively.

Last Friends gives us Veneering's story and begins at the memorial service for Sir Edward Feathers. He and Veneering are now both dead, and their remaining friends have gathered at the church. Gradually we learn of the early years of Veneering's life in a small North Eastern coastal town, which proves to be a rather Dickensian story. His father, a circus performer from Russia named Vanetski, remained in the town after injury, marrying a strong hardworking local lass, which produced a son, Terry. Terry, inherits his father's rather exotic looks and is very bright. He is taken under the wing of an elderly solicitor, and by a strange quirk of fate is saved from boarding an evacuee ship that is fated to be torpedoed. His solicitor friend has connections which help Terry to be educated, culminating in a law degree and his inheritance of a crumbling

chambers in London. Here, he specialises in construction industry law, that is when his path crosses that of Edward Feathers and their lifelong rivalry commences.

In this final book we understand a lot more about Veneering's outwardly showy, brash character and the effect his lowly beginnings have had. Minor characters in the previous books are now rounded out and the "last friends" have a significance and give finality to the trilogy, although, I would like to hear more of Isobel Ingoldby, the elegant, faded beauty, who has inherited Sir Edward's house

Jane Gardam explores old age and fading abilities, the loss of friends and the unwillingness to accept the inevitability of death. The book stands on its own, but to read the three books in sequence would be a much richer experience, as the author has very cleverly written a complete story each time, but gradually gives more insight into the characters as the books progress.

Our members all enjoyed Last Friends and would recommend Jane Gardam and her books to everyone.

### Eaton Bray Cricket Club

#### 100 Club Winners

##### May 2014

£25	John Salmon	No.98
£10	Gary Newey	No.86

##### June 2014

£25	Olive Blackburn	No.59
£10	Glenn Hearn	No.108

Eaton Bray Cricket Club is kindly sponsored by F.A. Hawkins Transport Ltd & Meadow Marquees

# Mrs Wendy Pattison

Mrs Wendy Pattison would like to thank all her friends for their cards and gifts, visits and 'phone calls while she was in hospital after her recent accident. She is now home and we all wish her a speedy recovery.

## Dagnall Weather Station (AONB)

### Weather Conditions for May 2014

May was over all a wet month with temperatures slightly above the average. Only once did the temperature drop below zero in the early morning of the 3rd going down to -1.2°C.

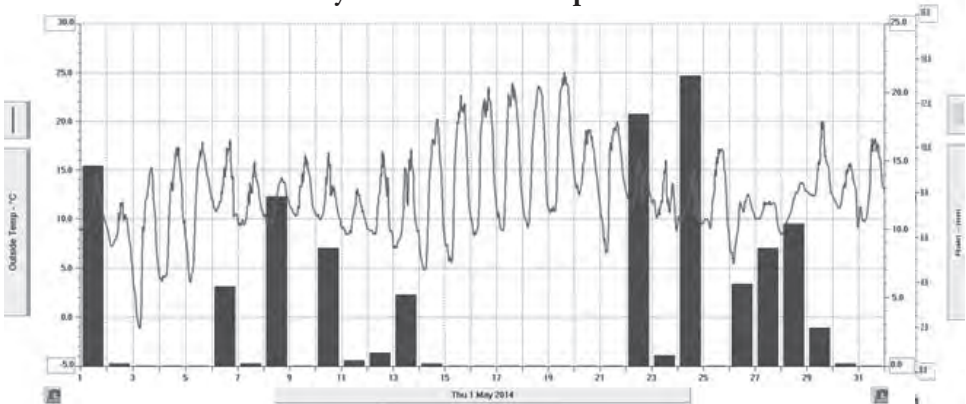
The rain was the main culprit this month although there was a 7 day dry period between 15th -21st. We had a total of

117mm, that's 225% of the 6 year average. For weather data 24 hours a day, updated every 15 mins, visit: [www.dagnallweather.co.uk](http://www.dagnallweather.co.uk) and [http://bit.ly/weather\\_dagnall](http://bit.ly/weather_dagnall) If anyone has a question, comment or wishes to contact me please email: [david@dagnallweather.co.uk](mailto:david@dagnallweather.co.uk) or telephone: 01442 843883.

**Elevation: 450 ft - Latitude: 51° 50' 13" North - Longitude: 0° 33' 34" West**

	High	Date/Time	Low	Date/Time
Temperature:	25.1°C	19 May 15.00	-1.2°C	3 May 06.30
Mean Temperature	12.5°C			
Dewpoint:	15.2°C	29 May 13.30	-2.2°C	3 May 06.00
Humidity:	98%	28 May 08.00	45%	18 May 18.00
Barometer:	1035.3 mb	15 May 10.30	997.7 mb	22 May 16.00
Wind Speed	40 mph W	10 May 17.30	Months avg.	5.2 mph
Wind Chill:	24.5°C SE	19 May 16.00	-1.2°C N	3 May 06.00
Dominant Wind:	W			
<b>Rainfall</b> *T= total rain days and moisture. R= Actual rain				
*Rain Days: 18 (T), 18R)	Wettest Day 24 May		21.21 mm	0.835 ins
Monthly Rain:	Total	May 2012	117 mm	4.606 ins
Yearly Rain:	Total	5 Month	476.2 mm	18.748 ins

### May 2014 Rain & Temperature







## Employing a Tradesman and NOT a Cowboy!

*Jonathan Vernon Smith is the Sony Award winning mid-morning show presenter for BBC Three Counties Radio. During his consumer hour he helps listeners with their consumer problems and now shares his advice with you.*

Sadly over the years I have dealt with far too many cases of consumers who have employed the services of a rogue tradesman and have paid a heavy price for their mistake. But how do you find a good tradesman to carry out work in your home or garden? Here are my top tips:

NEVER employ the services of someone who knocks at your door offering their services. If a builder, roofer or plumber has time to cold call people, then they're obviously not very busy. Why are they not very busy? BECAUSE THEY'RE PROBABLY NOT VERY GOOD! A good tradesman will be busy with work for weeks in advance. I am always similarly sceptical of anybody who tells you on the phone they can do a job for you that day. Always ask your friends and neighbours if they can recommend a good tradesman when you decide you need some work doing. It may sound simple, but the best way I have always found to employ the services of someone good, is to use your trusted contacts. Chances are if they did a good job for your best friend or next door neighbour, they'll do a good job for you too.

Make sure you always get at least 3 quotes from different people before you decide who to use. Don't necessarily use the cheapest, but at least if you have a range of quotes you can ensure that you are not overpaying for work to be undertaken. I generally go for the quote in the middle as long as I have a good feeling about the

tradesman and feel I can communicate effectively with him/her.

Always ask for references (particularly when you're using someone to carry out a large job). Don't be afraid to make contact with their previous customers and ask if you can go and look at the job they did. Ask them if they had any problems and what the tradesman/company was like at resolving those problems.

It is very important that you agree a method of payment before work begins. I personally do not pay for work until it has been completed. If the builder/electrician/plumber needs to buy parts etc for the job, then I am happy to pay for that on the basis of a receipt, however I insist on paying for labour costs on completion of the job. When you're dealing with a large job (e.g. an extension), then I would agree a payment plan in writing. However, you should always ensure a large enough final payment is retained to act as an incentive for the job to be completed to your satisfaction.

Finally, NEVER agree work without a written quote. Verbal contracts and quotations are of course legally binding, but trying to prove what was agreed weeks down the line is normally a nightmare.

Of course, as always if you follow my advice, but still come unstuck and find yourself dealing with a cowboy, then remember you can always call my consumer programme on 01582 637450.



# Salvation Sound



Words....

Some words annoy me more than others. For instance “yeah”! Long ago in the distant past when I was at school, we had speech training, and woe betide anyone who used slang words or expressions. They may have been in common use but they were not regarded as standard English.

The word slang means a counterfeit weight or measure, a showman’s booth at a fair, a watch chain, a prisoner’s fetter, a narrow strip of waste ground running parallel to a road or path. Hmmm! In our modern day dictionary are many words which I find alien. Obscenities, swear words and curses are there for any child to find and with modern technology to help them it is all too easy for them to pick up bad habits or expressions such as “wanna-be” or saying “right” at the end of every sentence. The English language is hard enough to understand without additives being put in the wrong place or context. Modern technology allows words to be abbreviated when texting. Should children (who all seem to have this ability) be allowed to use this way of writing in school? Language means conversation, dialect, idiom, jargon, terminology, phraseology, expression, style, diction, tongue, or so says my pocket glossary. To be able to speak in a foreign language fluently, is to my mind, remarkable. I tried to learn the french way of speaking, but failed miserably. “Le” or was it “la plume de ma tante est dans la jardin”, is just about all I can manage, and, really, how far would that take me?

Just think, right at the beginning, the people of the whole world had only one language and used therefore the same words (Genesis 11 v1). They built a city and a tower that reached into the sky - a

bit like some of the buildings and cities of today - so that they could make a name for themselves. Verse 6 says to me that God thought man was getting a bit above himself, so, down he came to take a good look at the city, the tower and the people. Imagine what he thought. He had punished mankind for disobedience with the flood in Noah’s time, now here they were acting up again.

He said, “I’ll scatter them all over the earth and mix up their speech” so the building of the city was stopped - it was called Babylon and the tower, Babel. In the course of time, the great city decayed, was ruined and left without inhabitants. (Jeremiah 51v37-38) and all that came about because of the way we lived and spoke! Nowadays because of Jesus’ sacrifice on the cross for us we have a direct line of communication with God, prayer, and it does not matter what manner of speech we have, he understands everyone, for he is fluent in all languages. So pleasant speech, pronunciation, enunciation.

Samuel Johnson wrote; “I have laboured to refine our language to grammatical purity, and to clear it from colloquial barbarisms, licentious idioms, and irregular combinations”.

John Wesley said, “use the most common, little, easy words (so they are pure and proper) which our language affords.”

Me thinks it is time to end this missive, for my thoughts ramble on and really I can babble endlessly.

✍Maureen



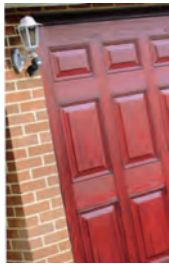


# Premier Garage Doors & Gates



## Quality Garage Doors

- ✓ Superb choice of designs in metal, wood and fibreglass
- ✓ Any size door made to your requirements
- ✓ Large selection of spares & fast repair service available
- ✓ New or existing doors converted to automatic
- ✓ Professionally fitted by own expert craftsmen
- ✓ Prompt free estimates & advice
- ✓ We cover all areas



**(EST 1984)**

DIY kits available  
Insurance work welcome  
Council approved  
Remote control gates also available



Unit 7, Sparrow Hall Farm, Leighton Road, Edlesborough LU6 2ES

**01525 220212**

**[www.premiergaragedoors.co.uk](http://www.premiergaragedoors.co.uk)**

# ONE DIRECTION

new album

# GET DOWN TO JANES



NEW SINGLE

# the best SHOP ever

# 1D

THERES ONLY ONE DIRECTION  
YOU SHOULD GO

## Saturday 5th July

ANDY STYLES and the band  
LIVE AT EDLESBOROUGH CARNIVAL

Supported by: LOUJANES Electrical & Flooring Management