



Focus

October 2014

The local village magazine just for Us!
Eaton Bray, Edlesborough, Northall & Dagnall



The White Horse Inn At Eaton Bray



Market Square
Eaton Bray
Beds
LU6 2DG
01525 220 231
www.thewhitehorseatonbray.co.uk



Midweek Six pound lunch
Monday to Friday 11.30am til 2.30pm
Great traditional pub dishes for £6

Monday to Thursday Evenings

**A great way to try our new
menu!**

2
courses
£12.50

A colorful illustration of Santa Claus in a sleigh, pulled by reindeer, flying over a snowy landscape under a full moon. The sleigh is filled with gifts and is lit up. The reindeer are pulling the sleigh across a snowy field with mountains in the background.

**Menus now available for
December Christmas
parties
and
Christmas day**

Focus Magazine Committee

Joint Editor: George Crutcher

7 Summerleys, Edlesborough 221637

Email: george.crutcher@tiscali.co.uk

Joint Editor: Sally Siddons

34 Wallace Drive, Eaton Bray 221733

Email: sallysid@hotmail.com

Dagnall Representative: Sue Cawdell

10 Deans Meadow, Dagnall 01442 842200

Circulation Manager: John Plater

41 Church Lane, Eaton Bray 221095

Treasurer/Leaflet Enquiries: Ken Coates

10 The Nurseries, Eaton Bray 220868

Advertising: Sally Siddons

34 Wallace Drive, Eaton Bray 221733

Design and Layout: Tracey Moren

(Moren Associates Limited) 01525 229695

Printed by: Priors Press

Dunstable 01582 699851

Copy for publication to the Editors or one of the following by the **10th of the month:**

Kevin Cabbage

'Larums', Eaton Bray Road, Northall

Val Barrow

3 Chestnut Close, Dagnall

Focus accepts no responsibility as to the accuracy or content of any advertising or articles published in 'this' magazine neither do they reflect the opinion of members of the Committee.

© Articles published in Focus may not be reproduced without permission.

Focus would like to remind contributors that the deadline for articles is the 10th of the preceding month

Kindly Note

If the event you wish to advertise falls in the first week of the month, it is advisable to get the details into Focus a month earlier. The magazines are not delivered from the printers until the first of the month, therefore it takes a few days for them all to be circulated throughout the village.

✉ Editors

Village Hall Bookings

To book your local village hall for an event please contact the following:

Northall: Lorna Cabbage Tel: 01525 220361

Eaton Bray: Norman Lee Tel: 01525 222831

Dagnall: Elizabeth Coates Tel: 01442 842550

Edlesborough Memorial Hall: Penny Pataky, Tel: 01525 229358

Police Contact Numbers...

making neighbourhoods safer together

General Assistance (Recommended Number): 101 Emergency: 999

Bedfordshire Police (Eaton Bray)

Leighton Buzzard Police Station/Kathryn Horgan: 01582 473418

Typetalk: 18001 01582 473418

Email: LPT.LeightonRural@bedfordshire.pnn.police.uk

Thames Valley Police (Edlesborough, Dagnall & Northall)

PCSO Jackie Dodson Mobile: 07800 703 524

Email: NHPT@thamesvalley.pnn.police.uk

Village Diary October 2014



Weekly

Mon-Fri (term time)	Eaton Bray Pre-school, Eaton Bray Lower School, 01525 220468
Mon-Fri (term time)	Dagnall Under 5's, Dagnall Village Hall, 9.15am - 12.15pm, Mrs Ann Tobin 07816 358342
Mon-Fri (term time)	Edlesborough Pre-School, Edlesborough School, 01525 220431 manager@edlesborough.bucks.sch.uk
Mon-Thu (term time)	Totternhoe Pre-school, mornings, Totternhoe Lower School, Ellie Deeley on 07913 529574
Mondays	Pilates, 10.45am, St.Giles Church Hall, Totternhoe, Lisa: 07799 893489
Mondays (term time)	2nd Eaton Bray Brownies, girls 7-10 years, Edlesborough Memorial Hall, 6 - 7.30pm, Contact Sandra Counsell 07979 521900
Mondays	Dagnall Community Choir, All Saints Church 7.45 – 9.45pm
Mondays	Weight Watchers, 7pm, Eaton Bray Village Hall
Mondays (term time)	Movement and exercise classes with a dance flavour, Northall Village hall 2-3.30. Contact Jan 01442 864271.
Mondays	Curtain Call Youth Theatre 5-7.30pm, Eaton Bray Village Hall, Gavyn 01525 220525
Mondays	Curtain Call Theatre Group - 7:30-10:30pm Eaton Bray Village Hall, Sheila - sdtwinkletoes@yahoo.co.uk
Mondays	KFPA ISTD Classical Ballet classes, 3+yrs, 4.15pm, Edlesbrough Memorial Hall, www.kfpa.co.uk
Tuesdays	Line Dancing, 1.30-3p.m., Eaton Bray Village Hall, Lyn Stubbs 220731
Tuesdays	Pilates, 10-11am, Eaton Bray Village Hall, Nicky Roussou 07861 162680
Tuesdays	Totternhoe Baby & Toddler Group, 9.30-11.30am, St. Giles Church Hall, Ruth Allen, 01525 222468 or 07796 265174 or email ruthallen002@gmail.com
Tuesdays	Northall Baby & Toddler Group, 9:30-11:30am, (open in the Summer School Holidays) Northall Village Hall, Stacey Richmond 01525 222999/07957 607592
Tuesdays	Tap & Ballet Classes, JoAnn Latus School of Dance, 4-8pm, Eaton Bray Village Hall, 01582 620576
Tuesdays	Circuit Training - Edlesborough School Hall, 7-8pm - www.simplesfitness.com
Tuesdays	Coffee Morning, Bring & Buy, Table Top Sale, 10-12noon, Salvation Army Hall, Booth Place, Eaton Bray
Fortnightly	
Weds (term time)	Cheeky Monkeys Under 5's playtime, 1pm - 2.45pm, Eaton Bray Village Hall, contact Rachel on 07789 760007
Wednesdays	Pilates, 7.15pm, Northall Village Hall, Lisa: 07799 893489
Wednesdays	Egyptian Dance Class, 7.30-8.45pm at Eaton Bray Village Hall. Contact: Soraya on 07976 964316 for more details
Wednesdays	Northall & District Age Concern Wednesday Club, 10am - 3pm, Northall Village Hall, Contact Anna 221996
Wednesdays	Dynamic Yoga 6.30-7.30pm £5 Eaton Bray Coffee Tavern Keira 07936 693696
Thursdays	Yoga, Northall Village Hall, 11.30am-1pm 01525 377542
Thursdays	Baby & Toddler Group, Salvation Army Hall, Booth Place, Eaton Bray, 9.30-11.30am
Thursdays	Keep Fit, Edlesborough School, 8pm Tel: 01582 668735
Thursdays	Jazzercise, 9.30-10.30am, Eaton Bray Village Hall, Angela Veryard, 01525 715208
Thursdays	KFPA Street dance classes 4+yrs 4pm, Edlesborough Memorial Hall, www.kfpa.co.uk
Thursdays	Central Bedfordshire Children's Centres' Toy Library, 9-9.45am, Eaton Bray (School Lane) Public Car Park
Fortnightly	
Fridays	Keep Fit class, Edlesborough Mermorial Hall 10 - 11am
Fridays	Tap & Ballet Classes, JoAnn Latus School of Dance, 4-8pm, Eaton Bray Village Hall, 01582 620576
Fridays (term time)	10am-11.30am "Little Luvvies" baby ballet classes. Contact Emma Whittemore on 01525 376124

Village Diary October 2014



- Saturdays Jazzercise, 9.30-10.30am, Eaton Bray Village Hall, Angela Veryard, 01525 715208
- Saturdays Drama Class for Children, 10.35am-12.35pm, Eaton Bray Village Hall, Claire Casey, 07792 508591
- Saturdays KFPA Musical Theatre classes 4+yrs www.kfpa.co.uk, 10am, Edlesborough Memorial Hall
- Sundays Grace Baptist Church (by the Post Office) Worship Service 11am-12pm. All welcome. Barry 01525 229610 or Peter 01525 221048.

Monthly

- 1st Monday Eaton Bray Parish Council Meeting, 7.30pm, The Coffee Tavern
- 1st Monday Eaton Bray W.I. Meeting, 7.30pm. Eaton Bray Methodist Church Hall. Contact Barbara Collier on 01525 221401
- 1st & 3rd Tuesday Dunstable & District Orbit (social and charitable) Club meet at Dunstable Rugby Club at 8pm. For details contact 01525 222441 or 01582 755147
- 1st Saturday St. Mary's church, Eaton Bray Coffee Morning & Plant Sale, 10am - 12 noon
- 1st Sunday May to September, St Mary's Church, Edlesborough Open Day, 2-5pm
- 2nd & 4th Tuesday TOTS, St Mary's, Eaton Bray, 2pm
- 2nd Tuesday Dunstable & District Local History Society meeting, 7.45pm, Methodist Church Hall, Dunstable (opposite Wilkinson)
- 2nd Tuesday Edlesborough W.I. Meeting, 7.30 pm, Edlesborough Memorial Hall
- 2nd Wednesday St. Mary's Ladies Guild, 2pm, St. Mary's, Eaton Bray
- 2nd Wednesday Eaton Bray & Edlesborough Lions Club, 7.30pm, The Coffee Tavern
- 2nd Thursday CAMEO Coffee, tea & chat, 10am-12noon, Edlesborough Methodist Church
- 2nd Saturday Workshops Dynamic Yoga 9.30-11am £10 Eaton Bray Coffee Tavern Keira 07936 693696
- 3rd Thursday Edlesborough Parish Council Meeting, 7.30pm, Memorial Hall
- 3rd Sunday Lunch club 11.30 to 2.00pm, Eaton Bray Village Hall, Chris Hewitt 222288
- Last Saturday Coffee Morning, 10-12 noon, Edlesborough Methodist Church

Other Regular Events

- 5th Beds Area Narrow Gauge Model Railway Club Meeting, 11.30am-4.30pm, Eaton Bray Village Hall
- 9th ELF Lunch Out
- 10th Leukemia Research Coffee Morning, 2 Dunstable Road, Dagnall 10.30 am. All welcome.
- 11th Cafe Community, 11am-1pm, Eaton Bray Methodist Church
- 21st Dagnall Over 60's "Bangers and Mash" lunch plus fruit pie and cream with entertainment from the Jolly Jazzers
- 27th ELF walk from Eaton Bray Church 10am

One Off/Annual/Irregular Events

- 4th Harem Night Egyptian Dancing, 7:30pm, Eaton Bray Village Hall, Box Office: 07927 385833
- 11th Dagnall Community Choir Autumn Showcase, 7:30pm, Eaton Bray Village Hall, Tickets £8 Jill 07505 120097
- 14th Edlesborough School Open Morning, 9:30-11am
- 17th Silver Screen Celebration, 7:30pm, Baptist Chapel, Northall, Tickets £2 01525 222288
- 18th Quiz, 7pm, Eaton Bray Village Hall, Tickets £9 pp, Contact: Ross 01525 221411
- 30th ELF visit to RAF Hendon



EDaN Community Transport

Peter Williams: 01442 842506

Village Notices

FOR SALE

**PRIDE GO CHAIR ELECTRIC
WHEELCHAIR**

**PURCHASED BUT NOW UNABLE TO USE
DUE TO HEALTH. NEVER BEEN USED.
PURCHASED AND DELIVERED MAY 14
FROM CARE CO, SEE WEB SITE.**

**COST £785 PLUS A SPARE BATTERY
£62 TOTAL £847. WE HAVE INVOICE
AS PROOF OF PURCHASE £595
TEL 07734 111654**

FOR SALE

GOLF CLUBS, REGAL

**PRO MENS IRONS
RIGHT HANDED. GOOD
CONDITION.**

**3,4,5,6,7,8,9, SAND WEDGE AND
PITCHING WEDGE - £25**

TEL 07734 111654

EDLESBOROUGH SURGERY & THE VILLAGE HEALTH CENTRE, PITSTONE 2014 FLU CAMPAIGN

**FLU SEASON WILL SOON BE UPON US AND THE SURGERY
WILL AGAIN BE RUNNING CLINICS FROM THE BEGINNING
OF OCTOBER 2014 FOR THOSE PATIENTS ELIGIBLE FOR AN
INFLUENZA VACCINATION. INFORMATION OF OUR CLINIC TIMES
ARE AVAILABLE ON OUR WEBSITE, POSTERS IN THE SURGERY,
PHARMACY AND ATTACHED TO REPEAT MEDICATION**

Those who suffer from:

Heart Disease * Neurological disease

COPD, or severe Asthma (except those only on the blue salbutamol / bricanyl inhalers)

Kidney or Liver disease * Diabetes * Stroke

Lowered immunity due to disease, or treatment of disease

Carers - who are our patients & care for a family member who is disabled or seriously ill

ARE ELIGIBLE FOR A FLU JAB

Bob's Blog

Have you noticed the tubs and planters full of flowers around the village? They have been placed and tendered by villagers who wish to make it more attractive. One thing is proving difficult, that is keeping them watered. If you live near to a tub or planter bed could you be persuaded to help by

giving it water. We intend to place further beds around the village but find we need more help before we can move forward. Please give the team some encouragement by responding to this appeal. I'm Bob Coulter and my Tel.No. is 01525 229551.



Poppy Prom - Saturday 8th November

One of the musical highlights of the year for Music at St Mary's is the Poppy Prom, Concert, on 8th November at 7.30pm, in aid of St Mary's, Eaton Bray, and The Royal British Legion.

The evening combines the solemnity of words and music from The Festival of Remembrance with the joyful music of The Last Night of the Proms. This year's musicians will be the South Beds Concert Band, St Mary's Choir and Dagnall Community Choir along with soloists, Min-Min Peaker and Hayden Elves.

The programme includes Music at St Mary's second World Premiere of the

year, written by St Mary's Choirmaster, Stephen Axford, plus music by William Walton, Sir Arthur Sullivan, Christina Rosetti and Tomaso Albinoni as well as favourites from The Last Night of the Proms by Elgar, Henry Wood, Arne and Parry. It will be a wonderful evening of entertainment and is likely to attract a sell out audience. Hurry to get your tickets, priced £12.50 and £10, from the Box Office, 01525 222283 and don't forget to bring your flags.

At the time of writing (10 September) roughly two thirds of the tickets have already been sold.



Harem Nights

Saturday
4th October 2014
7.30pm at
Eaton Bray Village Hall,
Church Lane, Eaton Bray

**An evening of Ancient and Modern Egyptian Dance -
performed by Eaton Bray Egyptian Dance**

BOX OFFICE : 07927 385833

**Free tickets:
Buy one get one free**

Services at St Mary's Church

SUNDAYS : 8.00am HOLY COMMUNION
10.00am PARISH SUNG HOLY COMMUNION

On Third Sunday of each month:

10.00am – WORSHIP FOR EVERYONE a shorter, less formal service for families. (For anyone wishing to attend a service where Holy Communion is offered, there is a Family Communion at 10.30am at All Saints' Church, Dagnall, where visitors are assured of a warm welcome).

WEEK-DAYS:

Tuesday: 2.00pm TOTS (Tots on Tuesdays) (2nd & 4th Tuesdays)
Wednesday: 10.00am Holy Communion

EVERYONE WELCOME AT THESE SERVICES

All Saints' Church, Dagnall

Services in October 2014

Sun. 5th Oct.	9.00 am	Eucharist
	10.30 am	Morning Service
Sun. 12th Oct.	10.30 am	Morning Service
Sun. 19th Oct.	10.30 am	Family Communion
Sun. 26th Oct.	10.30 am	Family Service with Holy Communion
Sun. 2nd Nov.	4.00 pm	United Service for the Festival of All Saints

Sunday School meets each Sunday at 10.30 am except when there is a Family Service.



Dagnall Over Sixties

Dagnall Over Sixties heard a fascinating talk in August on The Ridgeway, by John Tyler, illustrated with beautiful slides of the walk. He told us about the history of the Ridgeway and the meaning of the features of ancient civilisation along the way.

Our planned outing to Oxford was cancelled due to lack of support from the members, so an alternative outing to Pulloxhill for lunch and a visit to Dobbies afterwards, was hastily organised. 30 members joined us for that outing.

On October 21st we have our "Bangers and Mash" lunch plus fruit pie and cream, followed by a visit from the Jolly Jazzers from Hemel who entertain us with music and jokes!

On November 18th Hugh Grainger returns to give us a talk about "The Great Train

Robbery", followed by tea, raffle and chat. My plea for new members continues. Please call Rosemary on 01442 843202 if you are retired and are looking for some community fellowship, or would like to help to keep the club going. We are a very friendly bunch

New Tap Dancing Class For Adults

Beginners or with some past experience

Kensworth Village Hall
starting mid-September

Tuesday evening, 7.30pm

Good fun and a good way to keep fit

For details, phone Jenny on

01582 872650

A Letter from Rev'd Coralie

Vicar: Coralie McCluskey

The Vicarage, 11 High Street, Eaton Bray - Tel: 01525 220261

Honorary Assistant Priest: Revd John Heffer

Reader: Gordon Gray (220136)

Church Warden: Catherine Hayden (220527)

Parish Administrator: Elisabeth Ryder (07799 494972)

Web contact: eatonbraychurch@aol.com



The Harvest is over, all has been safely gathered in and most farmers in Hertfordshire, Bedfordshire and Buckinghamshire should be pleased.

This month, continuing with the created order and the beauty of where we live it seemed a good idea to write about animals, birds and other living creatures particularly as the life of St Francis of Assisi is celebrated on 4th October. St Francis saw animals and birds sharing in God's gifts and he referred to them as his brothers and sisters. Unlike many of his contemporaries in the 13th century he had very strong feelings about the way animals were treated. He also felt the same about his fellow human beings. St Francis is seen as the patron saint of birds and animals, including pigeons as well as swallows and robins; rats and midges as well as piglets, lambs and Jack Russells.

He dedicated his life to bringing them (the people) to repentance and he considered that one way of humanity showing their love for God should be to treat all God's creatures in a loving manner. He cared for the poor and particularly those suffering from leprosy. Others joined him and they all lived by a simple, gospel-based Rule emphasising the importance of repentance and poverty.

A few lines from the Earlier Rule of 1209 of Francis of Assisi to reflect on in a quiet moment, live in obedience, in chastity and without anything of your own and follow the teaching and footprints of our Lord Jesus Christ, who says: If you wish to be perfect, go and sell everything you have and give it to the poor; and you will have treasure in heaven; and come follow me.

For those who wanted to follow Francis but could not give away their possessions they could leave those things behind but still had to wear poor clothes and patch them with sackcloth.

St Mary's Memorial Service October 26th at 3pm

This year we will be holding an afternoon Memorial Service rather than the traditional All Souls Service. The service will be a mix of music, readings, prayer and silence as we remember family and friends who are no longer with us. There will an opportunity to light a candle in remembrance and after the service have a cup of tea and something to eat. The list, for names of those you wish to be remembered, will be available in the church and I will also pray for them at Evening Prayer (5pm) on All Soul's Day, Monday 3rd November - you are very welcome to join me.

Coralie

Striking a Blow against Pot Holes

Potholes are filling up fast across Central Bedfordshire thanks to a new repair technique introduced last month.

In its first three weeks the Velocity Patcher has fixed more than 1200 potholes, large and small on our roads. It can mend up to 150 potholes per day and can repair a pothole, leaving a level repair in about two minutes – a fraction of the time it usually takes a conventional method to do the job.

The process means that the council can usually carry out the work without closing the road. If a road does have to be closed it can quickly be re-opened to traffic.

The machine operates a three-step process that effectively “blows” the repair material into the pothole making the process much quicker completing more repairs per shift.

1. High-velocity air is used to remove all dust and debris from the hole
2. A cold bitumen mixture is forced into every crack and crevice, sealing the hole and protecting it by preventing water getting in.
3. A final mix is fired into the hole at high speed, evenly coating the area and providing a firm, level finish.

As heat is not involved in the process, the Velocity Patcher is also a greener way of repairing potholes. It produces exceptionally low CO2 emissions, leaves minimal waste material and causes no further damage to the road.

Cllr Brian Spurr, Executive Member for Community Services said: “Maintaining our roads is a key priority for the council. We are leading the way with this technique, which allows us to do more repairs for the same amount of money.

“Recent figures place Central Bedfordshire’s roads as the best in our region and among the best in the country. But we all know that potholes crop up and this machine will go a long way to sorting them out - getting the best possible value for residents and keeping people on the move.”

You can find out more about the Velocity Patcher and for the latest news and performance, to check plans for the future and report problems on our highways webpages at www.centralbedfordshire.gov.uk/highways



Thank You

I would like to say a big thank you to everyone for their generosity over the years with the Carnival Grand Draw tickets, the Cricket Club Raffle and this year the Five5 Golf Challenge. I am sad

that I cannot guarantee a prize for every ticket, we really do appreciate your support.

Many thanks
✍Margaret Jones



Thank you to everyone who has supported my fundraising to go to the World Scout Jamboree in Japan. The Quiz night was a huge success and I hope those of you who attended enjoyed it. Thank you so much

for your generosity; I am now very close to reaching my target.

I am really looking forward to going next summer and will write a report for Focus after I return.

✍Gemma Johnson





UNICORN WINDOWS LTD

“WHERE QUALITY & SERVICE ARE NOT A MYTH”

www.unicornwindows.co.uk

Tel: 01525 854272



Unit 3 Youngs Industrial Estate, Stanbridge Road, Leighton Buzzard

comput@mation

computer support & services

Computer Support for Business & Home

Problem Solving:

Virus & Spyware Removal
Internet & Email Assistance
Fault Diagnostics
Repairs & Upgrades
Slow Running PC's

Sales:

Desktops, Laptops & Tablets
Printers & Peripherals
Software

Services:

PC, Mac & Linux Support
Wired & Wireless Networks
Data Recovery
Install & Set-up
Health Checks

On-site Visits:
Office Hours & Evenings
by appointment

For friendly advice call John Wallace: 07968 536068 or 01525 261381
Email: john@computamtion.co.uk
Web: www.computamtion.co.uk

Computamtion Services Ltd - Est.1999 with over 25 years experience
9a Lower Way, Great Brickhill, Buckinghamshire, MK17 9AG

Carpet & Upholstery Cleaning

Professional & Local

All work guaranteed - not happy, don't pay

Powerful equipment means drier much quicker than other methods

100% Guaranteed no chemicals left in carpet when dry therefore will not easily resoil & perfectly safe for children & pets

Recommendations account for 90% of my work

Absolutely no hard sell

Telephone Colin for a Free Quote

DEEP-CLEAN

01525 851 811

www.deep-cleaners.co.uk

Email: colin@deep-cleaners.co.uk

EDLESBOROUGH SURGERY

11 Cow Lane Edlesborough

Enquiries - 01525 221630 Appointments - 01525 220333

www.edlesboroughsurgery.co.uk

Dr J R Bell, Dr Tisha Patel

Dr Stephanie Johnston, Dr Kirsten Riemer, Dr Heather Counsell

Friendly village Practice offering a wide range of health services including coils/implants, minor surgery, travel advice, in house blood tests, on-line appointments and repeat prescription ordering. Four Nurse Practitioners offering acute clinics with same day appointments. Also, midwife, health visitors in attendance. Local District Nurse Service.

Long established training Practice with a rotation of qualified doctors.

EDLESBOROUGH PHARMACY 01525 223181

Pharmacist – Mitul Patel

Friendly reliable professional service at the pharmacy

All doctors/dentists/veterinary and hospital prescriptions dispensed

Professional advice always available

Herbal/Homeopathic products

Special Orders on request

Stagecoach Theatre Arts
 An hour to sing, an hour to dance, an hour to act... A lifetime to Perform!

Please contact the Principal, Wendy Ashman
01442 823181
 leightonbuzzard@stagecoach.co.uk
 www.stagecoach.co.uk/leightonbuzzard
 www.facebook.com/stagecoachleightonbuzzard



SING! DANCE! ACT NOW!



Theatre Arts Schools
Stagecoach



MMH
Plumbing & Bathrooms



City & Guilds
 Qualified

- Full Bathrooms Installations inc Design, Supply, Tiling
- All General Plumbing work from : Leaking Showers
 Dripping Taps • Toilets not flushing • Radiators • Drains

Call Mark for a **FREE** no obligation quote **01525 220994**
 All work fully insured and guaranteed. **07842 653832**

Barry Cato
Motor Repairs

— Est. 1981 —

Servicing, repairs and MOT's arranged
Workshop at:
 r/o Norfolk House Farm, Harling Road
 Eaton Bray, Dunstable, Beds, LU6 1QY
Tel: 01525 221681 (workshop)
07836 650015 (mobile)

30 Years Experience
Domestic & Commercial Security



Burglar Alarms
Redcare Monitored Systems
Intercoms
CCTV
Access Systems
Locks



CERTIFICATE NO. NAC/G/2113

Quality Installations – Competitive Prices
Insurance Approved **Free Surveys**

AAA SECURITY

01525 378222

Email: sales@aaasecurity.co.uk

www.aaasecurity.co.uk



janes

Electrical Appliances, Bikes & Flooring Store

The Family Business with 130 years of recommendation



Free Delivery & Installation

On Kitchen Appliances & TV's

within a 15 mile radius (excluding installation on Gas & Built-in Appliances)

Sound Advice & Peace of Mind

4-8 High Street, Edlesborough, Dunstable, Beds LU6 2HS

Tel: 01525 220208 Fax: 01525 222802

www.janesltd.co.uk

Dominic Woolcott

Painter & Decorator



- Internal & External
- Plastering & Coving
- Insurance Work
- 20 Years Experience
- Competitive Rates

**For a professional job call:
01525 229682 or 07747 042879**

P. DYER ELECTRICAL

For all your Electrical & Testing & Inspection needs

- Re-wires
- Testing & Inspection
- Security Systems/Lighting
- LED & Low Energy Lighting
- Decorative Lighting
- PAT Testing
- Fuse Boards
- Fault Finding/Repairs

Fully insured, Part P registered, all work guaranteed.
Fast, friendly, reliable, local electrician. For a free,
no-obligation estimate, call Paul on:



Tel: 01525 222109
Mobile: 07850 682815



David John Harris
Green Fingers
(Established 1992)

All Fencing Work • All Gates • Paving • Patios
Driveways • Shingle • Hedge Setting and Cutting
Grass Cutting • Turfing Specialist • Exterior
Painting Service • Sheds Small Building Work
Trees & Shrubs Supplied

Tel/Fax: 01525 221745
Mobile: 07889 143713

WASHING MACHINE REPAIRS

ALSO
DISHWASHERS, TUMBLE DRIERS,
AND ELECTRIC COOKERS

Call
ANDERSON D.R.S.

01582 665764
www.andersondrs.co.uk
SALES AND RENTALS AVAILABLE

GYM & TONIC

WANT TO GET FIT, HAVE A
HEALTHIER LIFESTYLE & IMPROVE
THE WAY YOU LOOK & FEEL?
The following can be provided in our
Gym in Edlesborough or in your home

* **A Health & Fitness Consultation** *
* **Personal Training** * **Massage** *

Ruth Anderson Dip. PT & ST, Member of: Inst of Sports
Therapists & Register of Nutritional Therapists

Tel:01525 223074 Mob:07812 163979



For all your painting & decorating requirements
 Domestic and Commercial
 call Max for a free estimate with no obligation
maxbro@btinternet.com

Abbott Flooring

- Carpet & Vinyl
- Laminate & wood flooring
- Domestic & commercial
- Supply, fitting & adaptations
- Next day delivery
- All work guaranteed
- Free no obligation quotes
- No job to small

We provide a friendly, professional service at very competitive prices. If you require us to supply & fit or you just need some flooring fitted then give us a call.

Telephone 01525 220249
 Mobile 07958 244536



High Street Hair

66 High Street , Eaton Bray, Nr Dunstable, Beds. LU6 2DP

01525 221252

www.highstreethair.co.uk

Monday	Closed
Tuesday	9 - 6
Wednesday	9 - 6
Thursday	9 - 8
Friday	9 - 8
Saturday	9 - 5

A Professional modern salon, Providing Quality hair & nails services for the whole family.



JESSICA



TIGI®

think car, think...

smartAUTOGROUP



Established locally for over 10 years



Car servicing, M.O.T & repairs
Bodywork & maintenance
Mobile car body repairs
Accident & vandalism damage
Alloy wheels, scratches, dents, stone chips & scuffs
Fully equipped bodyshop & workshop
Complete diagnostic equipment
Dealer trained master technicians
Genuine parts

Competitive pricing – up to 50% cheaper than main dealers!

£10 off with this advert

Work Guaranteed • Free Vehicle Collection & Delivery • Customer Pick-Up & Drop-Off

Call us on **01582 664772** or visit www.smartautogroup.co.uk

Units 17 & 18a, Icknield Way Farm, Tring Road, Eaton Bray, Dunstable LU6 2JX



Bathrooms, Design & Installation

Tiling ♦ Heating ♦ Powerflushing ♦ Taps ♦ Leaks

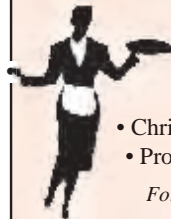
Call Outs ♦ Free Estimates Given



01525 222145



07971 559185



Patricia's Cuisine

Catering For All Occasions

- Buffets, Dinners •
- Christenings, Weddings, Funerals •
- Promotions & Business Lunches •

For Enquiries & Menu

Meadside Farm, 104 High Street,
Eaton Bray, Bedfordshire, LU6 2DP

Telephone: 01525 222174

P.J.BRINKLOW

Electrical Contractor

01525 220469

07860 781330

**43 Peblemoor
Edlesborough**



**Domestic & Commercial
Cleaning Service**

- Fully Insured
- Family Business
- Free Quotes
- References Available
- Rental Cleans

Also Carpet Cleaning with the new
Therma dry cleaning system -
Cleans, Disinfects, Deodorises and
Protects in one application
Carpets dry 15 to 30 minutes

Tel: 01296 624837
Mob: 07909 934168 / 07796 406717
www.spotlessofaylesbury.co.uk

Mark Janes Contracts

**Felt Roofing - All Roofing Repairs
and Property Maintenance**
FREE ESTIMATES



t: 01442 877528

m: 07841 343470

e: mark.janes3@btinternet.com

Established 25 years

*Approved Contractor
for Local Authorities*

For all your building needs look no further



BRIGGS
BUILDING & CARPENTRY SERVICES

Established 1981



For a professional, friendly service call:

(01525) 221767

(07970) 214439

Domestic & Commercial

Extensions
Renovations
Conversions
Alterations

New Builds
Roof Repairs
Kitchens
Bathrooms

Patios
Driveways
Decking
Garden Walls

Mini Digger, Skip Loader and Dumper Hire

All Work Guaranteed

Free Estimates

Consultation on Dagnall School

Becoming a Church School

Dagnall School is currently running a consultation on the proposal that it becomes a Voluntary Aided Church of England School. The school has always had a strong Christian ethos and already shares several events with All Saints Church in Dagnall.

Becoming a church school will enable us to work with other nearby church schools to maximise some economies of scale as well as accessing training for staff to enrich the curriculum. Dagnall School will continue to be a Bucks school and

will work with Bucks County Council to provide a good quality of education to any child from the locality who wishes to attend.

There will be little change for the children and parents but some new funding and governance procedures for the staff.

For more information checkout our website at www.dagnall.bucks.sch.uk or call or email the school on 01442 842473 Or office@dagnall.bucks.sch.uk

✉ Rachel Heath

Headteacher, Dagnall School

Protecting Frontline Policing



August saw the passing out parade for 65 new Bedfordshire Police officers, the first in almost 4 years following a recruitment freeze.



September will see another 34 new recruits start their training.

In addition the number of Police and Community Support Officer is being maintained and their shifts have been reviewed so that they work more hours at times when they are visible in local communities.

Furthermore the volunteer Special Constabulary is being more than doubled to 500 officers. Special Constables have the same powers as their regular officer counterparts and they serve a minimum 16 hours a month, often much more. Special Constables are also being used to support local policing teams with officers now working out of Leighton Buzzard and soon Biggleswade police station too. Police Commissioner Olly Martins said, “Government funding reductions have hit Bedfordshire Police hard, as a

result of which overall officer numbers will have fallen by about 150 between 2010 and 2015. Nonetheless the visible frontline policing that

the public tell me they value is being protected, and indeed enhanced through the use of Information Technology which will allow officers to spend less time in police stations and more time out policing local communities.

“Protecting frontline police numbers has meant some tough decisions on issues like the police estate (where our police stations are and what they look like), the level of the police precept (what you pay for policing through the council tax) and how services like the force’s control room are provided (soon to be organised jointly with the neighbouring forces in Cambridgeshire and Hertfordshire). However, the alternative is further cuts to police strength, something I will try my hardest to avoid”.

✉ Olly Martins, Police and Crime Commissioner for Bedfordshire

Did You Know...

Mills

Our history of mills starts with a very personal tale from a lady who still lives in the village today, the last miller's daughter. "Doo Little Mill is a Grade II* listed building and is one of only a few combined wind and watermills in the country. The mill has five floors, the watermill occupying the bottom two and the windmill the top three. There may also have been another floor originally.

The windmill originally had two pairs of stones, of which one cullen bedstone remains. Not much of the mill machinery is left, only the solid wooden wallower, the mainshaft and the spur wheel. The cast iron windshaft was discovered, being used as a support for the floor above the waterwheel. The watermill had two pairs of stones, one peak and one burr, both of which remain. Much of the machinery and gearing has survived. Unfortunately, some machinery, such as the winnower, has fallen into the wheel pit.

The sails were blown off in a violent storm in the late 19th century, possibly 1868. A photograph dated 1858 has survived, showing the combined mill, still with its sails intact. A steam engine was used to power the mill in its later years, which was housed in a building alongside the wheelhouse but unfortunately, the steam engine became unusable in 1921 and, since that time, the mill has virtually stood silent. Early documents which have survived show that a mill has stood on or near the site since mediaeval times. The first recorded mill owner was Edmund Buckmaster, who leased the mill to a Francis Ashwell for 99 years. This was in 1620 and, at this time, the mill was known as Horsham Mill. The mill was bought and sold many times and some owners were never millers. Some

owned other mills and let Doo Little Mill to tenant millers.

Years later, a miller from Slapton, Thomas Buckmaster, bought the mill for £188 10s 0d and also acquired the lease of "Mill House and Watermill" called "Horsham Mill" from the widow of a Henry Pearson. Henry had left his wife the mill and cottage in 1769. It was at this time that the name of 'Doo Little Mill' first appeared and has remained ever since.

It is thought that early in the 19th century, Thomas Buckmaster and his son Christopher decided to combine the wind and water power in one mill. The last miller was my father John Buckmaster Linney, who always hoped the mill could be restored, but he died never realising that dream."

A structure that dominated the skyline of the Beds/Bucks border between Eaton Bray and Edlesborough was Two Counties Mill until it was demolished in December 1988. There was a very tall water tank, insisted on by the insurers after the fire in 1917 (or 1923?) at nearby Bunker's Mill, of which the only evidence that remains is a waterfall by the bridge in Moor End.

Alfred Thorne was the owner of Two Counties Mill, a significant employer in the district. It took four men to turn over the giant oil engine that drove the four floored mill, Over twenty "mill girls" were employed to pack the Eclipse brand self raising flour. Whole train loads of corn would come in to Stanbridgeford station to supply the mill.

In 1844, Richard Simmons had started a business at Bellows Mill, Eaton Bray. Edlesborough Windmill, a local landmark, lost its sails, during a gale years ago, when someone didn't lock them. In the nearby water mill, now beautifully restored, a

party of regulars gathered for an unusual “sport” (likely to be frowned on by health and safety concerns in the present day), as perhaps twenty rats were known to feed when the mill stone was stationary at night. An opened sluice would spin it like a turntable and, by the light of lanterns, participants would attempt to knock off the rats with sticks.

Nurseries

Mr and Mrs W. E. Wallace came to Eaton Bray in 1886 and started a general nursery with four glazed-over duck houses. From 1904, success with the perpetual flowering carnation made W.E. Wallace a leading name in the trade. The local Sharrett family building firm constructed a new greenhouse for Wallace roughly every two years, each one 200-250 feet long by 45 feet wide. From the Chiltern Hills, they appeared as an eight and a quarter acre sea of glass. In 2006, one 300 foot greenhouse remains, overgrown but still visible at the end of The Comp.

Just opposite that greenhouse, there was a huge water tower (eventually demolished in 1996) whose engines pumped 80,000 gallons of water from three 300 feet artesian wells to supply 450,000 continuous growing plants, tended by 100 employees. In a good year, it is reported that 10,000 dozen blooms a day were despatched all over the UK, another reason for Stanbridgeford station being so busy. After closing in 1974, the nursery land was given over to housing development and street names there reflect the industry that preceded them.

The Wallace 500 acre farm and fruit trees were a separate entity, where gifted gardeners grafted thousands of the apple stock to produce vast crops. As the significant local employer, Wallace carried a huge influence in the village. Employees were worked hard in the Wallace empire

and, as you might expect, not all were the greatest friends with their boss but, generally, Wallace is perceived to have been a great benefactor behind many generous acts to support the village. More detailed stories of the Wallace era in Eaton Bray would make a whole book of their own.

Ducks

Years ago, Eaton Bray was awash with ducks. Arthur Holmes put carcasses that had been ordered by postcard onto a bus that would be met by a Luton hotelier within the hour. Ducks were even driven loose to Stanbridgeford Station and despatched live by rail.

The largest breeders were Maud and Ezra Tompkins in Moor End. Rows and rows of orange boxes nested broody hens sitting on twelve eggs for twenty eight days throughout the spring months to produce an average two to three thousand ducks a year. Plucking commenced at 5 a.m. daily and by 8 a.m., wicker baskets were loaded onto a horse-driven cart destined for Stanbridgeford.

NORTHALL BAPTIST CHAPEL

Chapel Lane, Northall

(just beyond the 30 speed limit signs on the road towards Leighton Buzzard)

Everyone is welcome to our Sunday worship each week between 11am and 12.30pm including tea/coffee and time to talk together.

For more information contact:

John Hazell 01525 218142

Email northallchapel@btinternet.com

There has been a Baptist Chapel in Northall for more than 200 years. Today we continue to seek to worship God, serve him in our daily lives and support and encourage one another in the difficult and the joyful times.

Take a Walk

Slapton – River Ouzel – Church Lock – Grand Union Canal

4¼ Miles 2 Hours

Location and Parking Slapton is between the A4146 at Billington and the B488 at Horton. No car park, use a sensibly located roadside space.

Grid Reference SP934208.

Ordnance Survey Explorer Map no 192, Landranger Map no 165.

Facilities None.

Start In the centre of the village, at the T-junction of Horton Road, Church Road and Mill Road.

Description A flat easy walk out along the banks of the River Ouzel, returning on the towpath of the Grand Union Canal. Some gates and stiles, the route between points 2 and 3 can sometimes get overgrown making the going a little bit harder.

The Walk

1 Leave along Mill Road, go through the kissing gate between the road and the last house; keep direction, with the hedge and the road to the right, over the farm driveway and the stile in the hedge gap, into the far corner. Turn left down to the signpost, turn right through the boundary and take the road to the right over the bridge.

2 Cross the stile on the left, follow the bank of the River Ouzel and continue between the river and the embankment to a marker post in front of a hedge across the track. Turn sharp right, go over the three sleeper bridge and turn left again between the river and the embankment. Step over the stile/footbridge and keep ahead through this ridged, undulating field.

3 Go over the stile; turn left along the field edge over the next stile and cross the field slight left. Step over the stile up onto the canal towpath and turn left, walk up to Bridge 116 and cross the canal.

4 Turn left along the towpath past Church Lock with the canal now to the left. Follow the towpath for a mile and a quarter to the next bridge and cross the canal.

5 Walk up the left hand field edge and cross the stile next to the metal gate; keep ahead along the wide hedged farm track to the road at a bend. Follow the road to the junction and turn left back into the village and the starting point.

Background Information

In the early days of transportation by canal the people who ran the narrow boats were quite prosperous. An owner or operator would employ a crew or helper; at least two people were needed, one to lead and look after the horse and one to steer the boat. Wives and families stayed on shore in their own house. When the railways arrived with shorter, quicker and often cheaper freight services, canal tolls came down and canal workers found life a lot more difficult. The easiest way to reduce costs was to close down any household on land and take the family on canal journeys to act as crew. The most usual combination would be the husband looking after the horse on the towpath and the wife steering the boat, often holding the tiller under her arm or using her feet, so that she could get on with a piece of crochet work or tie up old pieces of towline into fenders or ropework. Older children would often help out or be loaned to another

family to help them.

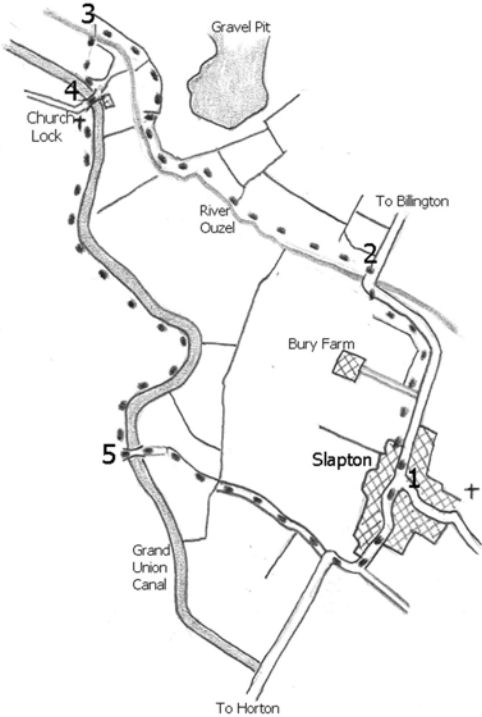
Living accommodation was cramped, the canals were nominally seven feet wide, so the cabin would be six feet wide by nine or ten feet long, making them smaller than the average modern touring caravan. Life must have been hard with small children to keep out of the water and a cabin which boat wives prided themselves in keeping spotlessly clean in difficult conditions. The boats would often have a dirty cargo like coal, to be delivered to a filthy wharf in a grimy industrial area. It was even worse when the boats themselves began to be powered by steam engines continually belching out smutty, dusty smoke. The advantage of steam or diesel power was of course that the main boat would be able to tow a second boat and double the carrying capacity; the second unpowered boat is called a butty. Narrow boats are always boats never barges; barges are larger, wider and work mainly on rivers pulled by tugboats.

It became an insular, almost closed world where canal people were regarded with suspicion by outsiders; they stuck together and supported one another. The children were normally illiterate because of the difficulties of regular schooling and intermarried within the canal community. The way that canal workers dressed was usually very distinctive; the women wearing long skirts, shawls and elaborate white bonnets long after they became unfashionable.

The origin of the traditional decoration of canal boats with designs incorporating roses and stylised castles has been already lost. It is possible that the roses symbolise the gardens missing from their narrowboats and the castles signify large and roomy places to live. The decoration was always completed on a fairly amateur basis, carried out by boatbuilders rather than professional artists or signwriters and often by the boatmen themselves.

Modern boats are built slightly narrower than older boats as some locks have subsided and made easy passage a little more difficult. The older working boats were also sometimes 72ft long; builders are now keeping designs at 60ft so that boats can go almost anywhere on the British canal system. Newly built or converted boats are incredibly luxurious compared to working boats, but they do have a lot more room using all of the original cargo area as well as the cabin. Some are so well appointed that it is possible to take a bath inside as well as outside the hull.

From Easy Walking by Clive Brown





Eaton Bray Lawn Tennis Club

The culmination of our annual club tournament is approaching faster than a speeding tennis ball hit by the fastest server from the planet Fastest Serve. September 13th sees our grand Final's Day, where the best take on the best to be crowned, well, the best, and to have the great privilege of their names being engraved on the magnificent trophies for evermore (I'm not sure how long it takes cardboard to decompose). A glorious day of tennis is promised, unfortunately taking place after the Focus deadline, so you'll be able to read all about the results next month. To whet your appetite however, the men's singles is being - or strictly speaking, were - contested between 187 times winner (or it seems like it) Darren Kerins and Ollie Thorne. The men's doubles pits Peter Hale & Roy Cook against David Provan & Stuart Adolph, whilst the ladies doubles involves Jane Cross with partner Carole Thorp take on Jane Wigley and her partner Nikki Baylis. Sounds a bit like Strictly! Finally, Tess, the mixed doubles again features Jane 'move, Glenn!' Wigley and her partner Peter 'baseline chop' Hale who play Jenny Baines & Ben Johnson (not the 100m Canadian world record athlete banned for doping after the 1988 Seoul Olympics - his name wasn't Jenny).

In addition to all that excitement, the morning sees no less than nine Junior finals being played, such is the strength and breadth of young talent in our club. That's why we're Eaton Bray's preferred Tennis Club, and why eight out of ten residents (who expressed a preference) said they would choose to join EBLTC over the newly proposed Walking On Hot Coals Club. The other two residents wanted to know how hot the coals were before they made their choice. Anyway, we'll have an

extended report next month, together with interviews with the winners and runners-up, performance analysis graphs, player assessments, and full match statistics game by game and set by set for all 13 matches. That's if I remember to write it all down, otherwise it'll just be the usual waffle.

EBLTC'S 'mystery player' is continuing to court excitement, with his/her efforts to play 250 sessions of tennis during the course of 2014. As I write, he/she has managed just over 200 court appearances (and still got let off with a fine...boom boom)! They are well ahead of schedule, averaging a net (geddit?) 25 sessions per month as opposed to the required 21 per month to reach target. See the next Focus for the latest update. Despite popular belief, it's not me. The last time I played a match I was lucky to survive the experience. I won't bore you with the details of the game, suffice to say that an honourable draw of one set apiece was achieved. To assess my fitness level I was wearing my 'heart monitor' to ensure my cardiac rhythm was in the most appropriate zone for burning calories. Unfortunately it never got that low, and spent 22 of the 23 games making a loud bleeping noise, the sort you might hear when a life support system is switched off. Between games I had to hold on to the side netting for support whilst being towelled down and doused with water by our opponents, my wife simultaneously applying cardiac massage. How I missed my iron lung. According to my monitor I should never have come off court alive, let alone with a draw, but all said and done it was a good workout, and a great incentive to do it again as soon as I get out of intensive care.

Finally, there may still be a few places left for our next fundraiser, the infamous Quiz which is on October the 18th, 7.30pm start

at the Village Hall. One of the reasons we can continue to play tennis on very well maintained courts is the success of these events, and we thank all of you who continue to support these quizzes. Just £9 per person secures your place and a free supper; bring your own drinks and glasses. For information, please call Ross Bagni on 221411 or e-mail 'ross.bagni@btinternet.com'.

For any further information about the club, including when we get together for our social tennis sessions up at the School Lane courts, or our various activities, you can visit our website at www.ebltc.org.uk; Alternatively please call Chairman Stuart Adolph on 07773 816320, Coach Sara Leavy on 07561 571578, or if they're all out and I'm not in fitness rehab, then me, Andy Cross, on 07783 667338.

Carnival Distribution


Huge thanks to all who contributed to the success of this year's Carnival. This year the Carnival Committee will be able to distribute £11,300 bringing the total raised by the Carnival Committee since the millennium to £165,000. This is a lower total than for some years, partly because of the poor weather, but also because of a change in accounting for St Johns Ambulance from a £500 donation to a £500 cost. As a result this year's total is equivalent to £11,800 in previous years.

A meeting was held on 1st September and in response to various commitments and requests the following distribution was agreed:

St Mary's Fabric Fund	£5,650
Leighton First Responders	£1,413
1st E Bray & Edlesborough Scout Group	£1,413
Appledown Rescue	£50
Dagnall School	£150
Dagnall Village hall	£125
Downs Heart Group	£50
Eaton Bray Methodist Church	£75
Eaton Bray Parish Council	£125
EB Academy	£150
EB Cricket Club	£75
EB Lawn Tennis Club	£75
Edlesborough Parish Council	£125
Edlesborough School	£150
Cancer Research & the Seve Foundation	£50
Expedition - Gemma Johnson	£100
Expedition Sophie McCloskey	£100

Joss Searchlight	£150
Keech Hospice Care	£150
Lionheart Explorer Group	£50
Luton, Dunstable & District Branch of Cats Protection	£50
Orbit	£75
Pitstone Green Museum	£125
Playskill	£125
Police Charity Fund - Beds	£150
Police Charity Fund - Thames Valley	£150
Taskers Row Social Club	£100
Toddington Band	£150
Totternhoe Lower School	£75
Totternhoe Pre-School	£75

Next year's Carnival will be on 4th July. Our principal charities will be 'Joss Searchlight', a local care organisation for children with cancer, and 'Medical detection dogs' and the theme will be "The Sea". If you would like to contribute to the Carnival Committee for 2015 then please speak to Gordon on 220136.



**Dunstable & District
Local History Society**
Tuesday 14th Oct, 7.45pm
Dunstable Through Time

John Buckledee displays photos from a new book featuring pictures from the Gazette's Yesteryear series, plus new colour views of the scenes today.

Methodist Church Hall, Dunstable
Visitors always welcome £3



Back Chat at St Judes



Nearly half of us suffer from some form of back pain each year. National Back Care Awareness Week runs from 6 – 12 October and is a promotional campaign by BackCare, the charity for healthier backs.

St Judes Clinic in Leighton Buzzard, will be holding a free advice day on **Tuesday 7 October from 9 am – 3 pm.** Practice Principal and Senior Physiotherapist at St Judes, Moira D’Arcy, will be offering free 10 minute advice chats, both in person and on the telephone, to anyone wanting some helpful advice on the prevention and management of back and neck pain. If you cannot attend on the 7th, you can call the clinic to arrange a more suitable time with one of their other experienced Chartered Physiotherapists.

In the meantime, there are ways we can help ourselves:

- Think tall - you will naturally help yourself engage your core stability muscles that help protect your spine.

- At work - ensure your chair and desk height is right for you and that the screen height and tilt is correct.
- In the car - your seat should be in a fairly upright position with good low back support. Consider buying a low back cushion for support. Ensure the head rest is correctly positioned to support the back of your head.
- At home - look at the depth of your sofa. If it is too deep for the length of your thighs or too low for you, then your hips will be lower than your knees when you sit, causing you to flex in your lower back.
- Sleeping - mattresses should give you enough support for your curves whilst keeping your spine straight. A mattress that is too hard or too soft is equally as bad.

For further advice or to book contact:

St Judes Clinic,
26 Lake Street
Leighton Buzzard
LU7 1RX
☎ 01525 377751
 🌐 www.stjudesclinic.com

Christmas Fayre

Why not head down to Stowe House on the 25th and 26th October for an exclusive chance to get all your Christmas gifts before the rush. Our two day event is the first Christmas event of the season and is the perfect opportunity to find unique and bespoke presents all under one spectacular roof. The Fayre was re-launched in 2012 following the restoration of the mansion, and is now bigger and better than ever before! It is a fantastic day out for all the family with children’s crafts and activities, and a chance to see this stunning venue and its surroundings whilst enjoying this exclusive shopping experience. Featuring

a wide range of products from children’s gifts to homeware, jewellery and clothing, we ensure that no two stands are the same so you’ll get the most variety possible all in one convenient place. With around 100 stalls in the main house and marquee there’s plenty to see and do. We also have a dedicated food hall with delicious and diverse foods and drinks on offer, so don’t miss out on this wonderful Fayre where you can find fantastic gifts in a beautiful setting. Free parking is available on site. Doors open 10:00 – 17:00. Adults £8, children £4.



— Christopher —
PALLET



Estate Agents - Valuers - Letting Agents

**Successfully
 Selling in LU6**

**Contact Us Now
 for a Free Valuation**

01525 222333

www.edlesborough@christopherpallet.com



Coffee Tavern

Large Hall £6.00 per hour
 Committee Room £3.50 per hour
 Large Hall & Committee Room £8.00 per hour



Bookings 01525 220891
 Stairlift and access ramp available

**D NICHOLSON
 PLUMBING REPAIRS
 and INSTALLATIONS**

NO JOB TOO SMALL



· Emergencies · Free Estimates
 · No call out charges

Dave Nicholson

MOBILE: 07976 975604

HOME: 01525 872335

**City &
 Guilds
 Qualified**

**R.J.O'CONNELL
 BUILDING SERVICES**

EXTENSIONS, PATIOS,
 DRIVEWAYS, ROOF REPAIRS
 AND PROFESSIONAL
 DECORATING SERVICE

TEL: 01296 681323

MOB: 07855 236726

**Will Kimberley
 Garden Services
 01442 255784**

Phone for a free no obligation written estimate
wkgardenservices@btconnect.com

- High hedges a speciality
- Fences erected and repaired
- General garden tidy up's
- In fact any job in the garden!

Make a Will

AND LASTING POWERS OF ATTORNEY

Protect Your Home 100%

YOU DECIDE, who is to run your affairs, who gets what, guardians etc, not the State.

MINIMISE RISK of Inheritance Tax and the disinheritance of children.

Best Price Guarantee

from specialist Solicitors and professional Will Writers since 1999

FREE HOME VISIT

For a **DAYTIME** or **EVENING** appointment call

01525 220644

www.wisechoicewills.co.uk

from
CARE FEES
and
PROBATE COSTS



Will Trusts & Probate Practice

A wise choice

MAKING A WILL HAS NEVER BEEN EASIER

Stuart Ball

Ceramic Wall & Floor Tiling Specialist

Over 31 yrs Experience



City and Guilds of London Institute

Tiles supplied or Labour Only

For a reliable service call your Local Tiler

Eaton Bray 229381

Signs * Graphics * Clothing

PinStripes

VEHICLE GRAPHICS

MAGNETICS

PRINTED & EMBROIDERED CLOTHING

SHOP SIGNS & WINDOWS

BOARDS & BANNERS

BUSINESS CARDS & STATIONERY

CANVAS PRINTS

AND SO MUCH MORE!

01525 220485

07973 167779

Join us on Facebook @

PinStripes Signs Graphics Clothing

For updates and special offers

EXCEEDING EXPECTATIONS IS JUST PART OF OUR SERVICE



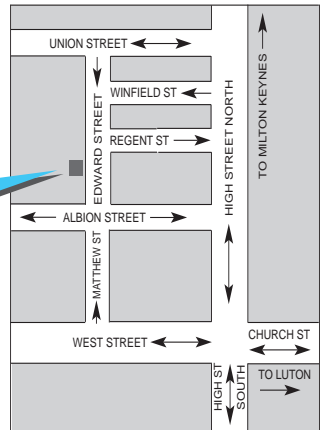
If you're **selling**, **letting** or **buying** a home, make it happen with your local estate agent



01525 220605 • info@giblinproperty.co.uk
www.giblinproperty.co.uk

Dunstable LAMINATES

email or fax your requirements for a quote or take advantage of our free home measuring service cutting and edging service available



why not visit our showroom - you'll be amazed at the choice

47 Edward Street, Dunstable, Bedfordshire LU6 1HE
Tel: 01582 668973 Fax: 01582 608227
Email: sales@dunstablelaminates.co.uk
Web: www.dunstablelaminates.co.uk

THE **WORKTOP** specialist



James B Chadburn FBHI Fine Antique clocks & Barometers

Specialist in repairs & restorations.

Valuations & clock finding service.

Advice & assistance on formation & disposal of private clock collections.

Quality clocks/barometers Bought & sold.



Telephone 01525 221165

Mobile 07790 000629

E-mail: info@jameschadburn.com



Café masala

Exquisite Indian Cuisine

We Cater for Office or Private Parties and don't forget to try our Sunday Buffet

10% Discount on all Takeaway Orders Over £12

Fully Licensed & Air Conditioned

Open Seven Days a Week

Hours: 12 Noon to 2.30pm & 6.00pm to 11.30pm

Tel: 01525 22 22 64

63 Bower Lane · Eaton Bray · Dunstable · Beds · LU6 1RB
email: taraque@hotmail.co.uk · www.cafemasala.com

alto window cleaning

A reliable and professional service.....

- Window Cleaning
- Conservatory Cleaning
- Fascia & Gutter Cleaning
- Solar Panel Cleaning

T: 01525 234120
M: 07807 973871

AARON FENCING

ALL TYPES OF DOMESTIC & COMMERCIAL
FENCING & DECKING WORK UNDERTAKEN

FREE ESTIMATES
FULLY QUALIFIED & INSURED
PERSONAL SERVICE AT COMPETITIVE PRICES

TEL: 01582 665779
MOBILE: 07798 927272

7 STATION ROAD, DUNSTABLE, LU5 4HS

Buy Direct From Our
Own Farm

Master Card

VISA

From **Ivinghoe Turf**

- Commercial & Domestic
- Small Orders Welcome
- Bark, Grass Seed & Fertiliser
- Laying Service
- Discount on Larger Orders
- Screened & Blended Topsoil
- All Year Availability
- Forklift Delivery Available



ROLAWN®
Approved Rolawn
Stockist

Family firm farming since 1949

ALL AREAS

Freephone :

0800 043 5061

www.ivinghoeturf.com

The Bungalow, Vicarage Farm, Ivinghoe, Leighton Buzzard

YEARDYE

Luxury Bathrooms

25 years in Herts
Beds and Bucks

DESIGN
SUPPLY
INSTALLATION



www.yeardyeluxurybathrooms.co.uk

email: cliff@yeardye.com

T: 01525 222717 M: 07972 328590

ARC Contract Services Ltd

- Painting & Decorating • Plastering
 - Wall & Floor Tiling • Door Hanging
 - Bathroom & Kitchen Installations
- 20 years experience

All work guaranteed and fully insured

Call Adrian : **01582 539179**

Mobile : **07789730580**



WESTROPE BROS.

LAWN MOWER SERVICES

ALL TYPES GARDEN MOWERS SERVICED

THE RYE, EATON BRAY

Tel: Eaton Bray 220587

Gas Boiler Servicing

Over 35 years experience

Have your boiler serviced by a **Gas Safe**
and **CORGI** registered engineer

Other services available:

Maintenance, repair and installation of all domestic gas appliances including L.P.G. Boiler installations, Landlord Safety Certificates and Power flushing.

Free Quotes, no call out fee, and free friendly advice on all of the above.

Edwards Gas & Heating Services

Eaton Bray

Tel 01525 220626

Email: stevethegas@orange.net



Vicky

The Dog Care Specialist

Where Dogs Come First



- Over 20 years of professional experience
- Sympathetic and gentle handling of all dogs
- Trained at the London Academy of Professional Groomers to the highest City and Guilds standard
- Dorwest Veterinary Trained
- Member of the Pet Industry Federation
- **No cages used**

www.vickysdogcare.co.uk

Telephone: 01525 222775

Mobile: 07796 445416

Email : enquiries@vickysdogcare.co.uk

Committed to the highest standards of animal welfare and customer care.



BEFORE



& AFTER



MISTY DOUBLE GLAZING ?

KEEP YOUR WINDOW FRAMES....

....WE JUST REPLACE THE GLASS!

- UPVC • Aluminium • Or Wood

Because we replace just the glass the repair is a

FRACTION OF THE COST

of a complete replacement window.

mistydoubleglazing.co.uk

01525 876808

QUALITY GLAZING SERVICES

We also replace Broken...

- Glass • Handles • Hinges & Locks

and Repair... Patio Doors & Conservatories!



**UPVC
frame
cleaning
service
available**

REVITALA

HOLISTIC THERAPY

Holistic therapies are concerned with treatment through massage, manipulation and relaxation. They are not only treatments for one physical ailment or one part of the body, but also treat the person as a whole. Ideal for today's stressful lifestyles.

Treatments include:

- Aromatherapy Massage
- Indian Head Massage
- Hot Stone Massage
- Reflexology
- Reiki

Vouchers are available for any treatment, so why not treat a loved one or friend as well as yourself.

Edlesborough based. For more information or to book an appointment call
Kate Meredith IHHT, RGN, on **01525 221380**

*HPC Registered
CHIROPODIST & PODIATRIST*



*For visits in your home
Phone: 07981 749038*

(Also Central Luton surgery - open 6 days)

jazzercise. 60 minutes
real Results of **ME** time



01525 715208

www.jazzercise-uk.com

[facebook.com/jazzercise.](https://www.facebook.com/jazzercise)
dunstablelutoneatonbray

**Thursday & Saturday 9.30am
Eaton Bray Village Hall**



Stephen D. Janes

(Established in 1982)

**CARPENTRY, JOINERY
KITCHENS FITTED
PROPERTY MAINTENANCE
TELEPHONE: 01525 220649**

Digital +

Aerial & Satellite Systems

tel:01525 237498
mobile:07970 260518
www.digitaltelly.net



BT Vision



sky freesat



BELLOWS MILL

Bed & Breakfast & Self Catering accommodation

Civil Wedding ceremonies and receptions available

Eaton Bray, Dunstable, Beds. LU6 1QZ
Tel: 01525 220548
email: reservations@bellowsmill.co.uk

www.bellowsmill.co.uk



Ian is one of the countries most sought after photographers. He is recommended by some of the UK's most prestigious venues such as Luton Hoo, Ashridge, The Kia Oval, Hatfield House and The Connaught to name just a few. Ian specialises in wedding, portraits and commercial photography.

Ian Waldron
naturally relaxed photography

www.ianwaldronphotography.com
01525 221479

Your Village Photographer
Based at Sparrow Hall Farm - Edlesborough

THE BEDFORDSHIRE AREA GROUP OF THE ASSOCIATION OF
16MM NARROW GAUGE MODELLERS PRESENTS

STEAM IN BEDS "2014"

THE SHOW JUST GOT BIGGER AND BETTER

LARGE SCALE NARROW GAUGE MODEL RAILWAY SHOW
FEATURING NARROW GAUGE LAYOUTS RUNNING 16MM LIVE
STEAM LOCOMOTIVES. TRADE SUPPORT FROM SPECIALIST
SUPPLIERS

SATURDAY 29 NOVEMBER

10.00AM TO 4.30PM - ADULTS £5.00
ACCOMPANIED CHILDREN UNDER 16 FREE

VENUE

EATON BRAY VILLAGE HALL
INCLUDING PART OF ST MARY'S CHURCH
CHURCH LANE, EATON BRAY, NR. DUNSTABLE, LU6 2DJ
REFRESHMENTS AVAILABLE ALL DAY
FOR FULL DETAILS SEE OUR WEB SITE: WWW.BAG16MM.ORG.UK



1st Totternhoe Scout Group & Brownies
& 4th Dunstable Guides

Jumble sale

Saturday 8th November

11am - 2pm

The Methodist Church
Dunstable Town Centre (Opposite Wilkinson)
Got a donation? Email Totternhoescouts@gmail.com

Neil Hodson Associates

*BUILDING DESIGN
STRUCTURAL ENGINEERING*

**PROFESSIONAL BUILDING DESIGN,
ADVISORY AND DRAWING SERVICES**

From plans for domestic extensions to multi-storey offices, commercial buildings and factories.

Structural surveys, site surveying,
advice on building defects and
Feasibility Studies

Planning Applications and Building
Regulation Consents obtained.

**24 HIGH ST TRING
Tel 01442 890894 OR
Edlesborough 222462**



Michael Hubbins

Ex. BT. ENGINEER

38 YEARS EXPERIENCE

Telephone Extn. Sockets
Domestic Electrical work

**Phone: 01582 471648
Mob: 0771 8834851
34 Grove Road
Dunstable LU5 4BY**

Anne Johnson D.O.

Registered Osteopath

6 Moor End, Eaton Bray

01525 221958

07957 250682

Daytime and Evening

Appointments Available



J ABLE BATHROOMS

New Showroom Opening in Edlesborough Soon!

We offer a complete design, supply and installation service.

DESIGN

Free CAD design of your bathroom so you can see a photo realistic plan of your finished bathroom.

SUPPLY

Come and browse our display suites and we will help you find the bathroom you are looking for.

INSTALLATION

Our installations are of the highest standards!

We take pride in making sure our customers are delighted with the finished result.

We have suites in a wide range of styles to suit any budget.

Drop in or ring to make an evening appointment at the showroom.

You can also ring to arrange a home visit at your convenience.

www.jablebathrooms.co.uk

J ABLE BATHROOMS THE LOCAL BATHROOM EXPERTS YOU CAN TRUST

3 Summerleys, Edlesborough, Buckinghamshire. LU6 2HR (Just past the village shop)

Tel: 07891 449 077 or 01525 220043 E: ableplumbing@hotmail.co.uk

fancy a break?



LUXURY 3 BED, 2 BATH APARTMENT APPROX 1 MILE FROM CENTRE OF PUERTO BANUS MARINA, SPAIN. 45 MINS EASY DRIVING FROM MALAGA AIRPORT.

ALL MOD CONS INCLUDING AIR-CON, SAT TV, FULLY EQUIPPED KITCHEN, SWIMMING POOLS, EXCELLENT CLUBHOUSE & TENNIS COURTS.

MANY GOLF COURSES AND ALL WEATHER BOWLING GREENS NEARBY. CLIMATE IDEAL FOR HOLIDAYS THROUGHOUT THE YEAR. RATES £350 - £750.

CALL PETER OR CELIA ON 01525 220173 OR VISIT OUR WEBSITE AT WWW.479LOSANARANJOS.CO.UK.

Plumm

PROPERTY

'A fresh approach to selling property' ...

IN AND AROUND YOUR VILLAGE

Phone now for a free, no obligation, Valuation of your Property

01296 660230

01442 863737

www.plummproperty.co.uk

Absolutely Plastered

**DOMESTIC/COMMERCIAL,
CLEAN AND RELIABLE SERVICE,
FREE ESTIMATES, FRIENDLY ADVICE**



- * Plastering & Coving
- * Floor Screeding
- * Pebbledashing & Rendering
- * Dry Lining
- * Cornices & Mouldings
- * Insurance Work Undertaken

CALL NICK CONWAY ON

Mobile: 07751 830716

Tel: 01296 688981

6 Cotes Way, Wing, LU7 0RB

Established over 20 Years

Duncan Tomblin

TREE SURGEON

**Forestry Contractor • Tree Felling
Crown Reduction & Thinnings
Deadwooding • Hedge Cutting
Stump Grinding • Site Clearance
Private Agriculture Fencing Contractor
Chipper & Stump Grinding Hire
Digger Hire**

**FULL PUBLIC LIABILITY INSURANCE
FREE ESTIMATES**

'The Best Choice For Your Tree'

TEL: (01525) 221946

MOBILE: (07802) 410728

12 Greenways, Eaton Bray, Beds

Edlesborough School

As the new academic year begins at Edlesborough School, we welcome all the new reception children into Stars class.

Mrs Freed, Miss Duffin and Mrs Sykes enjoyed visiting all the children at home and meeting all their families and pets! It is a very special thing to spend time with the children at home and we thank all their families for welcoming us. The children attended part



time for the first week and are now enjoying full days at school , and arrive each morning with a big smile on their face ready to enjoy the day.

The children enjoy a range of exciting activities in both our inside and outside learning areas, and have settled in beautifully and we wish them every success in their first very important year at Edlesborough School.

✍ Bernadette Freed, Early Years





ARE YOU LOOKING FOR AN EXCITING AND CHALLENGING OPPORTUNITY?



High 5 Events is established as one of the region's leading companies in the Meetings & Events industry. We strongly believe that our success and professionalism are a result of the calibre of our personnel.

We are currently seeking an **experienced Event Administrator** to join our team.

Suitable applicants will ideally possess at least two years' experience in a similar role or within the conference and meetings industry, where attention to detail is essential.

Requirements include:

- Excellent IT skills across Microsoft Office to support the High 5 team
- Strong communication skills & strongly developed service ethic
- The ability to research & create imaginative proposals
- Good project management and negotiation skills and able to work under pressure to tight deadlines
- Previous knowledge & involvement in planning events both in the UK and overseas would be an advantage
- For the flexible applicant, there may be the opportunity to accompany groups (UK or Internationally) to ensure client and delegate requirements are met in a professional and efficient manner
- Salary will be in line with experience

Candidates will be enthusiastic, self-motivated individuals who possess excellent organisational skills with an eye for detail. In addition, applicants will possess a positive and confident manner, and thrive in a demanding environment.



To apply, please send your CV and covering letter to:

Sue Turner, High 5 Events, Little ISTO,
Tring Road, Wellhead, Beds LU6 2JU
or e-mail: sue@high5events.co.uk



**Edlesborough
School**
*are holding an
Open Morning
for prospective parents on
Tuesday 14th October
from 9.30 – 11.00 a.m.*
We look forward to seeing you

invites you to
Eaton Bray
Methodist
Church
**Café
Community**

Saturday October 11th

11.00am to 1.00pm

*Relax & chat with friends,
coffee/light lunch*

All ages welcome (inc. activity area).



See you there

*food for the body.....
food for thought....*



Eaton Bray Academy

*What makes Eaton Bray Academy
a wonderful place to be?*



Here are just some of the exciting activities and developments that the children have enjoyed recently



Stockwood Park Sports



EBA Enterprise – Dragons' Den



Music Lessons



Holiday Club Fun



Extra-Curricular Clubs



Please come and visit our friendly village school.
Phone 01525 220468 or email admin@eba.ec



Theatre Trip



"Home cooked" meals



Refurbished ICT Room



Pre-School Playground



Key Stage Two Pantomime



Breakfast Club



Curriculum Days

Quotes from parents

"The school has already exceeded our expectations as a nurturing, encouraging and holistic educational establishment."

"I cannot think of any better environment for children to be nurtured in!"

"We like learning French!"

Quotes from children

"I like it when we do our work."

"Early Reading is good. I love doing my letter sounds!"

"We are all learning!"

MOT TEST CENTRE

ROEBUCK GARAGE
HIGH STREET
EATON BRAY
220385

McTimoney CHIROPRACTIC



Margie Craib BSc BHSI DC AMC MMCA
Human and Animal Treatments

Ashridge Farm, Ringshall, Berkhamsted, Herts HP4 1ND
Telephone: (01442) 842729

General Chiropractic Council Registration No. 293



Virtual administrative
support to businesses &
private individuals

Website hosting
Domain registration
Desktop publishing

01525 229695

Email:

enquiries@morenassociates.co.uk

www.morenassociates.co.uk

ADRIENNE'S PRIVATE HIRE

Call for a **FREE** quotation
Book early to avoid disappointment
Very competitive prices

Airport Transfers
& Private Hire

07980 039715

*Our executive Cars, 6 seater Minibuses and
lady driver are all available*

J.G.S. Metalwork & Son

Specialists in Gates
& Gate Automation

Access Control • Security Grilles • Railings
Balconies • Stairwells

www.jgsmetalwork.co.uk

Call in to discuss your ideas

High Street, Edlesborough LU6 2HS

Tel: 01525 220360 Fax: 01525 222786

GRASS ROOTS GARDEN MAINTENANCE

TREE SURGERY, HEDGE PRUNING,
SELECTION SUPPLY AND PLANTING OF
TREES, SHRUBS AND HEDGES.

REGULAR MAINTENANCE/ONE-OFF JOBS
(Fully Insured)

Brian McMahon NCH (Arb)

01525 221960



Edlesborough Flowers

Flowers, Gifts, Jewellery
& More...

2 High Street,
Edlesborough,
LU6 2HS

Tel: 01525 221920



Quiz



Eaton Bray Village Hall Saturday 18th October

This fabulous quiz with quizmaster Keith Blackburn will still include a **free** supper with the questions
Bring you own glasses and drink.

7.00pm for 7.30pm

? Just £9 per person. Teams of up to 8 people
Fabulous prizes!

This event is organised jointly by
Eaton Bray Village Hall Fundraising Committee
and Eaton Bray Tennis Club

For bookings contact Ross 221411
ross.bagni@btinternet.com



Churches Together invite you to

Silver Screen Celebration

with

Light Touch and friends

A Christian Group singing favourite songs from the Movies
followed by a buffet supper at the Baptist Chapel, Northall
on Friday, 17th October 2014 at 7.30 pm

Tickets £2,

***We are supporting St Francis Hospice and Churches
Together, donations on the night welcome***

CDs will be available for purchase

For information contact: Chriss (01525 222288)

St Mary's Christmas Fair

Saturday 15 November 2014

12 - 3pm

Eaton Bray Village Hall

50p admission adults

Children free!

Come and visit

Santa and Mrs Claus

with their elves in their
Christmas grotto at this
year's Christmas Fair!



With lots of other stalls to browse for your
Christmas presents, or just to treat yourself!

Delicious bacon butties and other refreshments on
sale all afternoon

For more information, or to book a stall, please
ring 01525 852368

ILLUSTRIA

Kennels & Kathotel

Offering your pet a fully licensed Dog and Cat boarding service.

Purpose built Dog kennels

Individual Cat chalets with outdoor exercise runs

All in pleasant country surroundings

01582 ~ 665343



ILLUSTRIA
Springfield Road
Wellhead
NR Dunstable Beds
LU6 2JT



Proprietors

Mick, Denise and Michele Garrod

G & J Groundwork Ring Garry

01582 477568

07949 118011

Fencing Panels • Blockpaving • Paths
Shingle Drives • Slabs • Paving
Steps • Gardenwalls • New Patios
Relaying • Soak Aways • Drainage
Free estimates or advice • References
www.gandjgroundwork.co.uk

Dog Walking & Pet Sitting



We look after any animal from hamsters to horses

Tel: 07756 930814

Email: crittercare@sky.com

St. Judes

physiotherapy, health and well being

- Chartered Physiotherapists
- Chiropody & Podiatry
- Massage
- Acupuncture
- Pilates
- Pregnancy care



Get back into the swing of things

01525 377751

enquiries@stjudesclinic.com

26 Lake Street, Leighton Buzzard
Bedfordshire LU7 1RX
www.stjudesclinic.com



For a top quality decorating job call

Marc Flack

01525 223166

Trading locally for 10 years
References are available

Make your house a home with blinds and awnings from



www.vansarblinds.co.uk



- Free No Obligation Measuring And Quotations
- All Blinds Made To Measure
- Choose In The Comfort Of Your Own Home Or Workplace
- Family Run Business
- Large Range Of Quality, Affordable Fabrics And Colours To Choose From



Call: 01525 220477 or 01582 699565 E: sales@vansarblinds.co.uk

Financially Prudent (IFA) Ltd

23 The Green, Edlesborough, LU6 2JF

Your local IFA for impartial Personal or Corporate advice on:

- Mortgages
- Pensions & Annuities
- Insurance
- Savings & Investments

Call Paul Pearce on 01525 220480 or email paul@finpru.com for a no obligation initial discussion



Financially Prudent (IFA) Ltd is authorised and regulated by the Financial Conduct Authority

Richard Hunt
Professional Drummer
Composer
Teacher

www.richardhuntdrums.co.uk

- Drum tuition for all ages and standards
- Over 25 years experience

Contact Richard for tuition and all other enquires
 Mobile: 07540 377902
 Telephone: 01525 222732
 Email: info@richardhuntdrums.co.uk

Patricia's Mobile Beauty Room

Beauty & Holistic Therapist
Covering Beds & Bucks

Call: 07866 126 510
01525 237 781

www.pamperexpress.co.uk

Gift A Song



**Caritas Harmony Are Joined By Ladies
from Herts, Beds & Bucks To Gift A Song
For Macmillan At Christmas**

**Christmas Spectacular
6.30pm Sat 13 December 2014
Methodist Church, The Square,
Dunstable LU5 4NA**

Tickets £5 from Brenda on 01582 873656
Children 12 and under free

email - info@caritasharmony.co.uk

www.caritasharmony.co.uk



WEDNESDAY CLUB NORTHALL VILLAGE HALL

**DO YOU KNOW ANY ELDERLY PEOPLE IN THE
NORTHALL, DAGNALL, EDLESBOROUGH,
EATON BRAY OR SURROUNDING VILLAGES
WHO MIGHT BENEFIT FROM A SOCIAL DAY
OUT ONCE A WEEK?**

- From 10am until 3pm each Wednesday
- Morning coffee and biscuits
- Home cooked lunch with pudding
- Afternoon tea and cakes
- Play games and bingo
- Entertainment by visitors
- Weekly Sale Table (pick up a bargain)
- Outside club visits (days out)
- Join in as much or as little as you like
- Our own mini bus will pick you up
- Make new friends
- Only £8 per week including transport
- Very friendly atmosphere

If you would like to join or know someone
who would contact Anna on 07854 230243

New members always welcome!

S M Reilly & Son Ltd

General Builders & Contractors



**Turning Your House into
a Home Since 1987**

*All aspects of the building
trade undertaken*

- *Extensions*Hard Landscaping*
- *Windows, Doors & Conservatories*
- *Fitting of Aluminium Bi-fold Doors*
- *Kitchen & Bathrooms*Drives*
- *Loft Conversions*

01525 221740
07970 637511

ALAN BOULT
(Light Haulage)



- TRANSPORT ● COLLECTION
- DELIVERY SERVICE
- SINGLE TO MULTIPLE ITEMS
- REGULAR CONTRACTS WELCOME

Tel: 01296 427182

Mobile: 07770 237745

Email: boulton586@btinternet.com

A McClelland
Pest Control



FOR FAST RESPONSE CALL:
mobile 0777 494 8415 or office 01582 872158

*specialists in: wasps - bees - ants - hornets
fleas - cockroaches - bed bugs - pigeons - magpies
rabbits - rats - mice - moles - squirrels - foxes - mink - feral cats*

UNMARKED VEHICLES

**For further information please call
or email a.mcclelland_pestcontrol@hotmail.co.uk**



Tel: 01525 221847
sales@act.uk.com



GENERALMECHANICALSERVICESLTD

VEHICLE SERVICING AND REPAIRS

A local, honest reputable garage run by Mart & Ollie
which is independently approved by "Motor Codes
Approved Practice" and the RAC

MOT's Cars, Vans & 4x4 servicing

**Tyres
Cambelts
Diagnostics
Batteries
All mechanical work
Welding and Fabrication
Horseboxes
Specialist in Land Rover**

Call now for a free quote

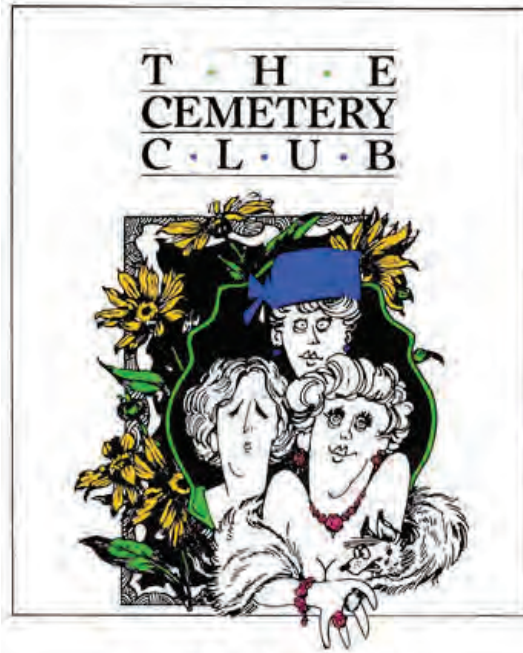
01525 222876

**1 Honeywick Lane, Eaton Bray, LU6 2BJ
www.general-mechanical-services.co.uk
reception@general-mechanical-services.co.uk**

Front Row Theatre Group

Presents

By kind permission of Samuel French



BY IVAN MENCHELL

Eaton Bray Hall
Thursday – Saturday
13 – 15 November 2014
at 7.30 pm
Licensed Bar from 7.00 pm

Three New York widows meet once a month for tea before going to their husband's graves. Ida is sweet tempered and ready to begin a new life, Lucille is a feisty embodiment of the girl who just wants to have fun, and Doris is priggish and judgmental, particularly when Sam the local butcher enters the scene.

Come and join us for an evening of comedy and pleasure that will make you glad you went to the theatre

You'll die laughing in The Cemetery Club!

Box office – 01525 222283



David Brown

Window Cleaning

Quality Reliable Service.

Regular, Occasional or
Single Visits.

Friendly Free Estimates.

Facias, Guttering & Conservatories.

External Cleaning & Maintenance.

Fully Insured.

Phone 01582 472113

Mobile 07534 837073

D & E HINES

High-Class Butchers

Quality Beef, Pork & Lamb

Grade A Poultry

BBQ & Sausage Speciality

Renowned for 'Bunkers Sausages'

Telephone: 01525 220413

98 High Street, Eaton Bray

IRON OUT

Complete Laundry Service

Shirt Service

Duvet Cleaning

Ironing

**Free collection & delivery from
home or office**

01582 667332 / 07885 320042

Email: ironout@aol.com



STOCKISTS FOR



GUTTER BRUSH

- All aspects of Pressure Washing - Roof Cleaning / Coating specialists

- Safe cleaning system using rope access
- Roofs cleaned using 'controlled' pressure washing
- 'Cleaning' water recycled

For before and after photos please visit:

<http://www.facebook.com/greatoutdoorsandin>



0800 298 5883

www.greatoutdoorsandin.co.uk



Dagnall School



A Buckinghamshire co-educational school

For 4-7 year olds



Dagnall School offers small class sizes, an exciting curriculum, excellent care and support and good links with the local community



Ofsted 2011
"Pupils are confident,
very happy at school
and curious to learn."



Tel: 01442 842473



www.dagnall.bucks.sch.uk

E-mail: office@dagnall.bucks.sch.uk

G.N.C Wall & Floor Tiling

Covering all aspects of tiling from
Natural Stone & Porcelain to ceramics



gnctiling@hotmail.com

Providing assurance & attendance through to
completion of works

For a free full & comprehensive quotation
please call Colin Bell

07725 033017

01525 222094

D.A. Windows Doors & Conservatories

23 Church Lane, Eaton Bray, LU6 2 DJ

Tel: 01525 221051 Mobile: 07801 798387

email: mimcavinder@hotmail.com

AUTHORISED
SWISH INSTALLER
WITH OVER 20
YEARS
EXPERIENCE

Installation of PVCu windows, doors and conservatories
Replacement glass units and window maintenance

QUALITY PRODUCTS - QUALITY WORKMANSHIP -
REASONABLE PRICES



General building
maintenance work
also undertaken
including:
Facias and Soffits
Gutters
Fencing

Accredited Member of the
Incorporation of Plastic
Window Fabricators and
Installers Limited

Eaton Bray Village Hall



- ❖ Equipped to support theatrical productions and film shows
- ❖ Large car park
- ❖ Large Kitchen with a six ring cooker, large refrigerator, hot trolley, crockery etc.
- ❖ 3 separate areas to hire to meet your needs and budget
- ❖ For more information and brochure please ring Norman on 07975 797202

- ❖ Superb venue for weddings
- ❖ Fantastic place for parties and dances
- ❖ A must for children's parties, can fit the bouncy castle inside if weather dictates!!!
- ❖ Keep fit groups
- ❖ Ideal for Club meetings or functions





local people working for you

OUR COMMITMENT TO YOU

30day challenge

...TO SELL OR LET YOUR HOME - OR WE WILL REDUCE OUR FEE...

Lettings 01525 371997 Sales 01525 377733
www.mandmproperties.co.uk

*30 day challenge is for a limited time only. Terms & conditions apply. Please ask a member of staff for details.



The Gentleman Gardener

Let your local RHS qualified gardener make your garden beautiful, from simple garden maintenance to total redesign of your garden.

Please call Barry on
01525-222451 or
07541196384

to pop round for a free chat.



All things for your dog, sold locally.

Come and see us in our shop –
Unit 7B, Sparrow Hall Farm, Leighton
Buzzard Road, Edlesborough, LU6 2HP.

Or check out our website –
www.completecanine.co.uk

And get free local
delivery at a time
that suits you.



Tel- 07854 102669

Email- info@completecanine.co.uk
Check web site for opening times.

We now have resident dog groomer, Julie,
from Heads & Tails. Phone 07836 240467 for an
appointment.

Dog Behaviour & Training



LawesPaws

Your dog on the right track

Professional help for you and your dog

Owning your dog should be a joy – if you are not
finding this the case - let LawesPaws help

Vicky Lawes ACFBA MGoDT (MT)
CANINE BEHAVIOUR CONSULTANT & MASTER TRAINER

Experienced, professionally trained & in
the comfort of your own home

Web: www.lawespaws.co.uk
Mob: 07765 287176
E: vicky@lawespaws.co.uk

Edlesborough School & Pre-School



Pupils' behaviour is outstanding...

The environment for learning is exciting and stimulating...

A real strength of the school is pupils' attitude to their learning .

Ofsted 2013

For more information about our School, Pre-School and Before and After School facilities, visit our website at www.edlesborough.bucks.sch.uk

Please contact the school on 01525 220431 to arrange a visit.



**SECURITY
SYSTEMS
LIMITED**

MJ Security Systems

Contact Us For More Information

Unit 4, Arianne Business Centre,
Blackburn Road,
Townsend Industrial Estate,
Houghton Regis,
Bedfordshire,
LU5 5DZ

Please call for a free quotation

T: 0800 0856126

E: info@mjsecurity.co.uk

W: www.mjsecurity.co.uk

Protecting what's important

MJ Security Systems Ltd



**FROM ONLY
£439.95+VAT
Products and
Installation**

Kit includes:
1 x Wireless Door Contact, 2 x Wireless
P.I.R., 1 x Wireless Sounder, 2 x Remote Set
and Unset Fobs.

Stylish • Wireless • Secure

We also specialise in:

- IP Cameras
- Intruder Alarms
- Access Control
- CCTV & Monitoring
- Door Entry
- Covert Cameras
- Security Lighting



Local family run business - Not a franchise

All chemicals used are Eco-friendly, non-toxic, non caustic and non allergenic
All work guaranteed and fully insured

All products are Child, Pet and Pregnant Safe

- Ovens & Hobs
- Extractor Hoods
- Microwave Ovens
- Agas
- Fridges
- Carpets
- Rugs
- Upholstery
- BBQs
- Freezers



☎ 01525 22 19 22 or 0800 122 3393

e www.ecotechovenandcarpetcleaning.co.uk

@ info@ecotechovencleaning.co.uk

RD ELECTRICAL

Specialising in all types of Electrical and Air Conditioning installations including:

- ◆ Inspection and Testing
- ◆ Garden and security lighting
- ◆ Energy efficient lighting
- ◆ Re-wires
- ◆ Specialist lighting – bespoke designs
- ◆ Kitchen and Bathroom specialist

Air conditioning throughout your home
All work guaranteed.



Call Richard on:
01525 221475
07932 759680



For a no obligation quote

TEL: 01582 667924



13185

"Good reputations take years to build"

GRAHAME PRATT

Plumbing & Heating Engineers

Plumbing & Heating
Bath & Shower Room Design and Installation
Ceramic Floor & Wall Tiling
Kitchen Installation
Small Building Works

www.grahameprattplumbing.co.uk

Email - **enquire@grahameprattplumbing.co.uk**

M . P . S

Maintenance & Property Services

- KITCHENS AND BATHROOMS
- PAINTING AND DECORATING
- PROPERTY RENOVATIONS
- PLASTERBOARDING
- FENCING

FREE ESTIMATES

NO CALL OUT CHARGE

NO JOB TOO SMALL

LOCAL

Contact:- Julian

07958 306301

E-mail – mps@mustoe.co.uk

www.mustoe.co.uk



Established Village Dog Grooming Service

Professional and Affordable

Large breeds welcome

Trained in Hand Stripping
Nails, Ears and Glands included

Contact Ulrika Tel 01525 211592
5 Mill Road, Stanbridge, Beds. LU7 9HX
www.abfabgrooming.co.uk

Spinney Landscapes & Gardening Services

All Aspects of Grounds Maintenance

Weed Control • Driveways & Patios

Lawn Care & Scarifying • Fencing

Turfing • Tree Work

Snow Cleaning & Gritting

Tel: 01582 872084 Mob: 07876 500292

Email: chambo.1628@btinternet.com



Francis House Preparatory School



The Best Start They Could Wish For

AT FRANCIS HOUSE WE ARE PROUD to offer our pupils a safe, caring and happy environment that fosters a love of learning.

Each one of our pupils is able to reach their true potential whilst enjoying a broad range of academic subjects, sporting and gymnastic opportunities, together with a wide range of extra-curricular activities including dance and music. Teamwork and achievement are encouraged and rewarded, as are friendliness and generosity.

FRANCIS HOUSE is a Hertfordshire town school with a countryside setting overlooking the Chilterns. It is positioned on the edge of Tring but with easy access to the A41. Francis House is a day preparatory school for girls and boys between the ages of two and eleven whereour Nursery and Kindergarten (Pre-Preparatory) are an integral part of the school.

FRANCIS HOUSE SCHOOL NURSERY now takes boys and girls from the age of two years during term time from 8.00 am – 6.00 pm.

Our dedicated and experienced staff, maintain an excellent staff/pupils ratio, with small class sizes that enable our pupils to properly prepare for the rigours of the next stage of their education.

Aylesbury Road, Tring, Herts HP23 4DL

T: 01442 822315 E: info@francishouseschool.co.uk

W: www.francishouseschool.co.uk

| An Independent Day School for Boys and Girls aged 2 to 11 years |

Dagnall Community Choir



BUSY PERIOD FOR CHOIR

Our Community Choir has had a busy and challenging Summer.

In previous years we have had a break in August but members expressed disappointment and sadness at missing our Monday evening practices so, having accepted that there would inevitably be some absenteeism during the holiday season, we continued to enjoy the usual strong support of our much valued singers. Under the enthusiastic and tolerant leadership of Michelle Garrard and accompanied by Judy Smither, our accomplished pianist, we have been further developing our varied repertoire in readiness for a busy Autumn Concert period .

Our first appearance will be at our **"AUTUMN SHOWCASE"** at **EATON BRAY VILLAGE HALL ON SATURDAY 11th. OCTOBER at 7:30. TICKETS ARE £8 (or £5 for under 12) which includes a glass of wine or soft drink during interval. TICKETS CAN BE OBTAINED FROM JILL LOW ON 07505 120097 OR FROM ANY CHOIR**

MEMBER. Pre-booking of tickets is recommended to avoid disappointment but tickets will also be available on the night

The show will feature a wide range of music, including songs from "The Shows", "The Beatles", solo pieces from Stephen Holder and Judy, our pianist, and the first appearance of our male voice melange. The unveiling of this innovation is eagerly anticipated, not least by our sopranos and altos.

After our "Autumn Showcase" we will again be a part of "The Poppy Prom" at St. Marys, Eaton Bray on 8th. Nov. and then we will be putting on "A Christmas Concert" at Dagnall Village Hall on December 7th.

We hope that you will be able to come along to enjoy the results of all of our hard, but fulfilling, work.



The National Trust South Beds Assn

**Wednesday 1st October
Castles in Bedfordshire**

*Tony Woodhouse:
Local Historian*

**Salvation Army Centre,
Bull Pond Lane, Dunstable**
Visitors are welcome at £1
*For further information
phone 01582 527790*

London Luton Airport

With an increase in aircraft in the area and in particular when the wind is from the East, we are getting some aircraft flying directly over the village to join the flight path into the airport. If you are disturbed by the traffic flying over the village, there is a complaints hotline number: 01582395382. This is an airport number where you can register your concerns. It is important to do this if we are to reduce these disturbances over our village.

If you need to complain about Heathrow flight noise the number is 0800 344 844. Email: noise_complaints@heathrow.com



St Mary's Ladies Guild

July Meeting

After being welcomed by Deirdrea birthday cards were given to Christine Rogers and Jenny Hewett. Devotions followed led by Deirdrea.

Notices – A thank you card had been received from Jenny for the plant received on her return home from hospital. “Seeds of Kindness” theme – envelopes with two seeds in had been given to all members with a request to grow them and in due course see whose seeds had grown the best. Those members who went to Frosts for the Cream Tea agreed it was a splendid afternoon and was enjoyed by all.

Phil Baker from the Dunstable Rep (DAOS) was introduced. He outlined the history of the group accompanied by slides. The Little Theatre in High Street South, Dunstable is the home of Dunstable Rep. Six amateur shows are performed annually in the 99 seat auditorium. Other theatrical groups also perform at this theatre. The company was formed in 1945 and performed in the old Town Hall and moved to the Little Theatre more than 40 years ago. Originally a library, the Little Theatre was opened by Bernard Bresslaw in October 1968.

Christine thanked Phil for a very pleasant and informative talk presenting him with a gift and hoped it had inspired members to visit the theatre to support the group.

Social time followed with many appetising dishes for members to choose from. The raffle followed with prizes of hanging baskets and “Seeds of Kindness” pens.

The Guild meets on the second Wednesday of each month at 2pm at St. Mary's Church. There is either a speaker or demonstrator each month followed by a lovely tea. This is a very friendly and welcoming group. Please give us a try.

September Meeting

After the initial welcome to all members a special welcome was given to Megan Hall by Deirdrea. A birthday card was given to Maureen Cecil and Devotions were led by Marjorie.

Christine was asked to give the notices as follows:-

At the 8th October meeting, the speaker will be Susan Blain on Health and Happiness.

The Christmas Fair takes place on 15th November, Fay and Joan Fossey have volunteered to set up the Guild's stall and man it for the first half, Christine and Cathy will do the second half and clear up at the end, members were asked if they would bring a new gift to the next meeting for the stall.

The speaker Michael Pittam from the Dunstable Food Bank was introduced. Michael covers the LU5/LU6 postcodes. Most of the people claiming this food are single parents; as well as those who find a delay in receiving their benefits and where benefits are changed. It also encompasses those on low income, unemployed and those in debt.

Vouchers are issued by doctors, social workers and other organisations including Clergy. These vouchers enable clients to collect a pre-packed box which usually comprises of three days' supply.

All donations are greatly appreciated (not always food) but the Food Bank would ask that food expiry dates are checked before being donated. There are several collection points including, supermarkets, schools, churches and some public houses. The food is collected from these areas and taken to a warehouse in Leighton Buzzard where it is sorted, checked and packed.

Michael thanked the Guild members for

the two boxes of food brought in at the meeting. Jenny thanked Michael for a very informative and pleasant presentation.

Social time followed with a very

scrumptious tea, after which the raffle was drawn and members made their way home.



Edlesborough W.I.

We began a recent meeting with a very interesting report on the A.G.M. held in Leeds.

Our speaker that evening was Roland, a volunteer worker for the charity known as Medical Detection Dogs. There are two ways in which these specially trained dogs can detect certain medical symptoms. The first is by using their extremely strong sense of smell to indicate signs of cancer in a person's breath or urine. They cannot detect it by contact with anybody, however. The second way is by alerting their owner to imminent attacks due to wrong sugar levels and other medical signs. As a result, the owners were able to prevent such attacks happening. Roland showed videos of a number of these dogs with their owners, and we heard how the animals help them. There was even one dog which accompanies its owner, a young girl, to school each day. The dogs are fantastic, and help their owners to live as normal a life as is possible. In many cases they save their lives.

As well as training dogs for this work, the charity carries out research. Volunteers such as Roland give talks in order to raise money. They also attend many functions in order to publicise their work. Often dog breeders will donate a puppy for training, which is a great help. Such dogs give marvellous assistance to their owners from day to day. It certainly was a really informative talk about such wonderful animals.

At our last meeting we heard how much members had enjoyed the evening meal at Chiltern Forest Golf Club, particularly in such beautiful surroundings as Wendover Woods. Kathy and Elizabeth were thanked

for arranging this. Thanks also came from Chris for the support given to the recent Edlesborough Festival, which had raised £3,000. Special mention was given for Megan (art) and Phrena (flower arranging) and the help they had given in making the weekend such a success.

Our speaker, Martin Sirot-Smith, took on the role of Lawrence Washington, who was born in North West England in 1500. Lawrence was a descendent of the Washington family who originally lived in Washington, County Durham. In 1529, he moved down to Northampton, where he later set up as a merchant in the wool trade and made a fortune selling to Flanders. After marrying a rich widow in 1531, he became Mayor of Northampton and set up a grammar school for boys. His wife died in childbirth in 1533, and six months later he re-married.

Lawrence and his new wife were given two large houses as a dowry, and their wealth grew.

Colonel Henry Washington, Lawrence's great, great grandson, went to live in Virginia, America in 1656. In 1732 his great grandson was born, and went on to become America's first President, George Washington.

Back in the 16th century Sulgrave Manor in Banbury was built by Lawrence Washington. In 1919 restoration work was carried out, and paid for jointly by the English and Americans. It is today open to the public, and children are able to dress up in historic attire when they visit.

This was a most interesting talk on how the Washington families in England and America are so closely related. Quite a history lesson!

✍️ Val Harris

Edlesborough Cricket Club



Edlesborough CC 1st XI - 2014 Season Review

Having secured promotion to Division 5 last season our 1st XI acquitted themselves well to life in the higher Division. Three of the first four games were won, including a convincing home win over local rivals Eaton Bray. However, early momentum could not be maintained and we managed to lose games against promotion rivals at home to Whitchurch and away at Great Brickhill when very well placed to win both. Results in these two matches, together with a failure to bowl out our friends from Eaton Bray in the away game in early July ultimately cost us promotion. We also had games called off against two teams that finished in the bottom three, again losing valuable points.

A final position of fifth, a points tally of 284 (the runners up last season secured 293), with 7 wins and 5 defeats from our 18 matches do not tell the full story. As it turned out there were five strong well-matched teams in Division 5, including ourselves, underlined by the fact that we remained unbeaten against all of sides that finished below us. Yet we played some of our best cricket against those top sides. The pick of the performances included a 3 wicket victory away at the eventually promoted Whitchurch, and a convincing 5 wicket win at home against a very strong St Andrews side. We also played some excellent cricket in a close draw at home to promotion challengers Great Brickhill.

There were a number of

very creditable individual performances over the course of the season, in truth far too many to do justice to in this article. As a team we were however significantly strengthened by the return of Edlesborough old boy Ben Tye. He topped the wicket-taking stats in league games with 30 victims and an average of 10.13, despite missing a number of matches. As the season wore on he also started to demonstrate his undoubted prowess with the bat too.

He was ably supported by all of the other bowlers, most notably Richard Wood with 26 wickets at 9.13 - but Rob Johnstone (13 wickets), Ally Thorn (16 wickets) and Scott George (13 wickets) also bowled consistently well.

Yet our batting performances were dominated by the consistently stylish performances of Chris Kimpton. He scored a total of 566 runs at an average of 56.6 including one century and three fifties, a truly exceptional return over the course of the season. He was well supported by Graeme Bunting, Andy Tyne, Ben Tye, Ally Thorne who all played significant roles in turning games in our favour, and



Edlesborough 1st XI 2014

we must not forget the old stager and specialist 'finisher' Les Thorne, who played beautifully and averaged over 50. It was also great to see another of our old boys Andy Kight return to the side during his summer break from his teaching job in the Midlands during August. He batted with great skill in the three games he was available for, scoring an impressive 155 runs at an average of 77.5, and his clever spin bowling was a great asset too.

At the end of the season I am pleased to be able to say that this side is well placed to make continued development next season - a similar rate of progress will surely see us promoted.

The most important aspect throughout the season however was the ability we showed across the team and the desire to play the game competitively but in the right spirit, with a strong sense of togetherness. We can be very pleased with ourselves and I'm very much looking forward to next season.

Graham Simpson, Captain

Edlesborough CC 2nd XI - 2014 Season Review

Nearly, nearly, so very very nearly. We knew we had a chance this season, right from the very first game. We nearly started with a maximum 30 points at Aspley Guise, yet we finished the season the same way, very nearly winning the last game and promotion to Division 6. In between there were the expected ups and downs, but the highs very much outnumbered the lows.

That opening game saw two outstanding performances as Raj Abbas fell just short of his maiden 100 for the club, caught in the deep on 97. Ceri Davies then ripped into the Aspley Guise top order taking 6-32. Eight wickets down at Aspley Guise dropped anchor and doggedly held on for a draw.

The promising start appeared to be a false

dawn, as over the next four games the 2nd XI suffered three crushing defeats, two at the hands of Milton Keynes New City Thirds - a series of losses that would prove crucial in our promotion push.

In between those three defeats however, came the individual performance of the year. Pete Stanesby and Tehmoor Abbas put on an incredible 199 for the first wicket at Ivinghoe & Pitstone. Pete had been very much in the supporting role as Tehmoor had ticked over, and between them they broke the opposition's spirit. Tehmoor went from strength to strength and was eventually dismissed for 187 trying to score quick runs to enable the declaration. Left chasing a daunting total Ivinghoe and Pitstone lost a wicket in the first over, with Damo Blow bowling an opener not playing a shot, an indication of the damage Tehmoor had done to the psyche of the opposition. Neon Lane and Pete Bignall took three wickets each, and the skipper took the last three to clean up the tail and 30 points welcome were secured.

A well earned draw against the champions elect, Aston Clinton saw the 2nd XI go into the second half of the season in lower mid-table. With summer holidays looming player numbers were dropping to dangerous levels. The prospect of conceding a game seemed real, and probably a second game a week later. It was a tough decision, but rather than fail to fulfil a fixture 'guest' players were called for and the two games that could have just been thrown away were played... and won. When I returned from Holland after missing for two weeks, his team had 60 more points than when he left (they won without me?).

Wolverton were next to face the rejuvenated 2nd XI, and despite only losing 4 wickets their 200 was not enough. Ejaz Farooq was a quiet star behind the stumps all season, played a few little

cameos, and despite stellar performances from others was probably our Player Of The Season. But against Wolverton the chips were down and his 59 not out was the difference between the sides as we won by two wickets with an over to spare. The winning streak continued into August, determined to get the game on, on an awful wet afternoon we were rewarded with an win at home against Printers and another 25 points was earned.

One of our 'guest' players during July was Elstisham Dar who having taken an impressive 6 for 9 in the return game against Ivinghoe and Pitstone was to join The Boro on a more permanent basis for the rest of the season and proved a key asset in our late season push for promotion. Aston Clinton proved why they were running away with the League and ended our winning run, which put pressure on us for the following week's game against rivals Aspley Guise. But we should not have worried, Dar took the game away from them with a cultured 136, and this time there was no rear-guard action as Aspley Guise faltered to defeat.

With two games to go and promotion still very much a possibility, but a narrow defeat at Printers, where 78 from Dar could not prevent the home side from securing the win with 15 balls to spare. Realistically, the promotion dream was over with the withdrawal of Milton Keynes New City from the Division – their points being removed our two defeats against them now working in our rivals favour – but there was still hope by the final game in the season, however faint. But in reality it was now about confirming a respectable third place at home against bottom place Bletchley. Another 134 from Tehmoor Abbas won him the divisional batting trophy and allowed us to declare early to give ourselves the best chance of victory.



Elstisham Dar pulls for 4 more

Dar starred again taking 5-21, and Pete Bignall took yet another '2-for' to finish as our leading wicket taker. But it was all in vain as Bletchley defended from the very first ball, and despite losing 9 wickets, were still there at the end of 50 overs.

Coming so close to promotion meant that third place was a bit of a disappointment, but had that been offered in April we would have been absolutely delighted. We can be proud that our third place was achieved by a combination of individual performances and real teamwork. The same set of players will be looking for even more from next season, when nearly will not be enough!

✍️ Jamie 'Chief' Blackford - Captain

INSANITY

*Insanity Fitness
Classes*

*The new fitness craze, that will
leave you with INSANE results!
Get the body you never thought
you could!*

*Call Michelle for more info:
07774093648 or email on
mhollick.247@btinternet.com
or simply turn up to a class
Tuesdays at 10.30am and Fridays at
7.30pm Edlesborough memorial hall*



Edlesborough Book Group

The Unknown Bridesmaid by Margaret Forster

The choice this month was The Unknown Bridesmaid by Margaret Forster, who is well known for her novels dealing with domestic life and the problems faced by ordinary families. This book also focuses on a family, but from a slightly different angle. Julia is a child psychologist who, we perceive to be excellent at her job. She deals with troubled young girls and their mothers, helping them to see one another's point of view. Julia is a divorcee who lives alone, seeming to be an independent and successful woman.

Gradually, as the sessions with her young clients are interwoven with Julia's own early life, we become aware that she is quite a complex and damaged character. We learn about the deaths of first her father and then her mother whilst Julia was still quite young. Her older cousin Iris takes her into her home, but her kindness is repaid by Julia's quite spiteful behaviour towards

the family. As we learn more about her selfishness and cruelty towards the people who care for her, it becomes difficult for the reader to form any empathy with the character; indeed a feeling of uneasiness grows, as we wonder how her story will develop. In fact, as an adult Julia feels a burden of guilt at the harm she has done in the past, but continues to hide this to the world. Her saving grace is her skill at her job and her ability to see where her clients can improve their relationships. Margaret Forster is a fluent and clever storyteller, and the ploy of interweaving the past and present life of Julia works well, but it does seem to fit a little too glibly and this together with its unlikeable heroine, makes the book not one of her best works. There are lots of social and psychological points to discuss however and it makes a good choice for a reading group.

Appledown's Rescue Dog of the Month



Meet Hoisin, a small Welsh Terrier cross aged about 3 years. He is very active and full of fun. He loves a good game of fetch and will need owners who can give him plenty of exercise.

Hoisin has proved to be very well behaved wherever he is taken and is good around other dogs. He could live with a calm female dog but not a cat. Hoisin cannot be homed in Luton.

If you feel you could offer Hoisin, or any of our other dogs, a loving and secure home, please call in at the kennels any day between 10 a.m. and 4 p.m. Our staff will

be happy to offer advice and information. Please note that we have restrictions on rehoming dogs to families with children under seven, so please ask for details.

Date for your Diary! - Brush off your blue suede shoes for our **Rock 'n Roll Night!** 7.30pm on Saturday 15th November at the British Legion Club, Heath & Reach, Leighton Buzzard. Tickets £10 (includes light supper) available from Appledown. Appledown Rescue and Rehoming Kennels, Harling Road, Eaton Bray, Beds LU6 1QY.

Call 01525 220383 or e-mail appledown.kennels@btinternet.com (Reg Charity No. 1116848)

How to Buy a Pet



Jonathan Vernon Smith is the Sony Award winning mid-morning show presenter for BBC Three Counties Radio. During his consumer hour he helps listeners with their consumer problems and now

shares his advice with you.

Sadly over the years I have dealt with many consumer problems concerning animals. You name it, from the puppies that suddenly become ill the day after purchase to the animals with hereditary conditions where the breeder takes no responsibility after their wallet is full of your £20 notes. Sadly it's all too common. I have to say that on many occasions, I find myself becoming furious with consumers and the irresponsible way they often go about purchasing a new addition to their family. If you want to do things the correct way, without getting ripped off, then listen carefully to my advice.

Firstly, animal rescue centres are absolutely overflowing at the moment with dogs, cats, rabbits etc. that have been abandoned either by irresponsible, ghastly people who didn't think carefully before taking a pet on, or by folk whose circumstances have changed through no fault of their own. Obviously, if you feel able to rescue a pet, and take on any problems that animal may come with, this is preferable. Check to make sure the animal rescue centre has a good reputation. However, there are many people out there who want to experience the pleasure of raising a pet from a young age. If this is the case, then chances are you're going to have to part with some money.

As tempting as it may be, NEVER purchase an animal being advertised on the internet. No self-respecting breeder would ever advertise an animal on online

sites for buying and selling. You may well get a bargain dog or cat, but if that animal has started life in some kind of pet breeding factory with little regard for the animals' welfare, you may be taking on an expensive and potentially dangerous problem for the future.

It is also worth mentioning that unless you have met the animal's mother and father, you have no idea of the temperament or health of the animal you're purchasing. NEVER buy an animal if you cannot meet its parents. If you are told to meet the 'breeder' at a half-way point or in a lay-by, then massive alarm bells should be ringing in your head!

So what SHOULD you do? Well, my advice is to search out a good, reputable breeder with the right ethics. Generally, making contact with a breed specific club who can put you in touch with good breeders, or (for dogs) finding a Kennel club fully accredited breeder will ensure you are buying a good quality and well-bred animal. You will have to pay more money, but with pets and most things in life, generally it's worth every penny.

If you DO buy an animal, then ensure you organise good pet insurance to run from the minute you commit to buying him/her. If you have a problem, then you are still covered by your usual consumer statutory rights.

Finally, as always if you follow my advice but still have a problem with a furry addition to your family, then you can always contact me at BBC Three Counties Radio and I'll do what I can to help.



Edlesborough

Post Office & Stores

YOUR LOCAL VILLAGE STORE

.....

POST OFFICE HOURS

Mon to Fri – 9am to 5.30pm / Sat – 9am to 12.30pm

No lunchtime closure. Closed on Bank Holidays

- Inland and Overseas Parcel Services
- Road Tax
- Foreign Currency
- Moneygram
- Personal & Business Banking (applicable accounts)
- Bill Payments

SHOP HOURS

Mon to Sat – 5am to 8pm / Sunday - 5am to 1pm

Open Bank Holidays to 5.30pm

Home Newspaper & Magazine Deliveries

Edlesborough, Eaton Bray, Totternhoe, Slapton, Northall, Stanbridge,
Tilsworth, Marsworth, Ivinghoe

- National and Health Lottery
 - Free ATM
 - Monthly Promotions in Store
 - Mobile Phone, Electric and Gas Top Ups
 - Fresh Bread and Cakes (orders taken)
 - Fresh Fruit, Veg and Local Produce
 - Off Licence (offers in store)
 - Greeting Cards and Stationery
 - Laundry and Clothing Repair Service
-

High Street, Edlesborough LU6 2HH

T. 01525 220381 E. edlesboroughstores@hotmail.co.uk



Registered Freelance Riding Instructor

Just moved into the area and teaching within a 10 mile radius of Edlesborough.

Teaching private clients on their own horses.

Experienced teaching all levels of ability, age and discipline.

Fun, enthusiastic and confidence giving.

Kate Broadway BHSAI

01525 792562 07841 053159

JAMES FALCON-CROSS LANDSCAPING AND OUTDOOR LIVING DESIGN



ALL ASPECTS OF
LANDSCAPING UNDERTAKEN

INCLUDING FENCING,
TURFING AND RAISED BEDS

TIMBER STRUCTURES
DESIGNED AND BUILT

VEGETABLE AND HERB
GARDENS

BESPOKE WOODEN FURNITURE

FREE ITEMISED QUOTATIONS

FULLY INSURED

01442 843258 / 07769 901325

ONECROSSFALCON@GMAIL.COM

Bill Bowman Photography

Weddings - CD from £500
to stunning Italian Albums

Family Portraits,
Babies, First
Birthdays,
Parties, Pets

Free sittings
Packages
from £25



Tel: 01582 873338
email: bill@hccs.co.uk
www.billbowman.co.uk
Teelands, Oldhill Wood,
Studham, Beds LUG 2NE

Leighton Aerials

Established 1970

For all your aerial and
satellite needs call Colin
on 01525 374742





EDLESBOROUGH TENNIS CLUB

Website by Jupiterwill

www.etctennis.org

Play tennis Have fun Socialise Feel good Join our club

Join via the website, or call Iona McLean-Hall on 01525 220562 for details

Monthly draws

New 100 Club

Spend £2 to spend a penny

In aid of toilets and other improvements at St Mary's Church, Eaton Bray



Contact: eatonbraychurch@aol.com or telephone: 222691

Eaton Bray Academy

The staff work exceptionally well as a team to promote children's welfare, learning and development and to make sure everyone enjoys their time at the pre-school. Ofsted 2012



Children benefit from the abundant shared resources, access to school assemblies, the information technology suite and the extensive outdoor facilities. Ofsted 2012

Pre School



How many Pre Schools do you know that are part of the Main School? Well, EBA is *one* School!

All the children wear School uniform, have their own book bag, can attend clubs and even eat our delicious School dinners, cooked on the premises by our own School cooks.

.We believe that quality Early Years education is essential; it is on this that everything is built.

We offer a caring, happy, secure and stimulating learning environment in which the children thrive.

Come and have a look!

Tel. 01525 220468 or email admin@eba.ec

Children clearly benefit and thrive as the accommodation, equipment and resources are well suited for their purpose and conducive to learning. Improvements to the premises and the outdoor area give children the confidence to explore and help all aspects of their development. Ofsted 2012

CHIMNEY SWEEP

Local & Est. Brush n Vac
Friendly, Clean and Efficient

Call **KEVIN HING** on

Tel: 01525 371592

Mob: 07940 528897

www.khing.co.uk

Member of NACS



Cheeky Cherubs Childcare

Tel: 01442 843 846

Mob: 07774 323 439

Children of all ages welcome, from
birth right though to their teens!

OFSTED Registered & DBS Certified

Nicola Fowler



Book Now!

tel: 01525 223042

mob: 07738 097670

Dog Walking, Running & Boarding

In Edlesborough, Eaton Bray, Dagnall, Ivinghoe, Northall



Dog Walking & Dog Running

Whether your dog needs a one off walk, extra exercise over the weekend or a regular walk, I'm happy to help. I can pick up, walk and drop off your dog on a daily, weekly or ad-hoc basis. I also offer dog running for dogs who need more energetic exercise.

Dog Home Boarding

Have your dog come and stay with me in my homely cottage in Edlesborough, where they'll get long walks with lots of love and attention and will be looked after as if they were my own.



BOOK NOW - contact Kaely on 07738 097670.

www.kaelysdoggyhotel.co.uk



Beau

HAIR AND BEAUTY SALON

- Unisex hair salon
- Hair Extensions
- Nail Bar
- Wedding, Prom Hair Styling
- Express Eyelash
- Girls Glamour Parties
- Accessories
- Loyalty Cards

01525 220926

3 Summerleys, Edlesborough LU6 2HR

For lots more offers and news about what is happening follow
and like us on Beau Hair & Beauty @beausalon

CND
Shellac™

KOLESTON
PERFECT

O.P.I



ghd



PLUMBING AND HEATING

FOR ALL YOUR PLUMBING, HEATING AND GAS REQUIREMENTS

NOSSITER AND BARNETT LIMITED
PLUMBING AND HEATING

CONTACT MATT OR JAMIE
TEL 01525 229524 MOB 07802 270427



Home or Business
IT Support



Home or Business IT
HOBIT.CO.UK



Visit Our Website at www.hobit.co.uk

Laptop Repair • Virus Removal • Data Recovery
Laptop Screen Replacement • Data Transfer
Wired & Wireless Networks • Broadband Setup
Backup Solutions • Printing Problems
Tune Ups • 1:1 Training • Email Problems
Ipad & Iphone Connectivity Issues
Computer Upgrades • Free advice

Call now 01525 378127 or 07702 80 70 90
RELIABLE - PROFESSIONAL - LOCAL



LOCKED & SECURE

Keeping your Family, your Home and your Business Protected

WE SPECIALISE IN THE FOLLOWING :



ALARMS



LOCKS



CCTV



ACCESS CONTROL



SAFES

WE ALSO OFFER



Free Security Audits
& Crime Prevention Talks



Please Call NOW or visit our Website for more info
FOR ALL OF YOUR SECURITY NEEDS

01908 483233

Serving Northamptonshire, Buckinghamshire, Bedfordshire,
Hertfordshire and South Lincolnshire.



www.lockedandsecure.co.uk
info@lockedandsecure.co.uk

Come for Coffee at St Mary's

For a warm
welcome and a
cheering cuppa
on the first
Saturday each
month in
St Mary's Church
Eaton Bray
10.00am - midday



Are you an elderly or
housebound resident ?

Would you enjoy a
monthly (free delivery) fish
and chip supper ?



If your answer is 'yes' to either of the above questions then please do get in touch.

We run this scheme on the last Friday of every month but need your orders no less than 48 hours prior to this. We have a voicemail facility on our phone if we are not there to speak to you directly. All messages will be confirmed back to you so you know your order has been received.

Please call on **01525 229 656** to place your order

Ordinary people doing amazing things





Some comments from our recent Ofsted report:

Children are consistently offered a stimulating range of activities and opportunities which enable them to make good progress towards the Early Learning Goals.

Staff have a good understanding of creating a safe and welcoming environment . . .

Staff support children well and encourage them to be active in their learning and to think critically.

We are a committee run playgroup operating five mornings a week 9:15 – 12:15 for children aged 2 to school age.

If you would like to find out if your child would be happy here, please phone our Playgroup Leader, Ann Tobin on 07816 358 342.

www.dagnallunderfives.co.uk

Wednesdays
1:00pm to 2:45pm
(during term time)
 Eaton Bray Village Hall

Cheeky monkeys
 under fives play time

£1.50 per adult / £1.00 per child / 50p under 1yr

creative play singing
 stories baby corner
 craft juice & biscuit
 tea or coffee and more!

Come along,
 make new friends
 and join in
 the fun!

**Sheplegh Court
Nr Dartmouth, South Devon**

Lovely two bedroomed apartment in country house set in 30 acres of gardens, woods and parkland. Facilities available include:

- Heated outdoor swimming pool with sun terrace and barbecue area (summer only)
- Conservatory overlooking the gardens and parklands
- All weather tennis court.
- Snooker room with full size table
- Small indoor pool, jacuzzi and sauna

Secluded position on outskirts of award winning village yet within 3 miles of beaches and Dartmouth Golf and Country Club. Available for weekly letting or for three plus days out of season.

For further details please telephone 01525 220957 evenings and weekends

eww

E W Wallace & Co
Chartered Accountants
Tax Consultants
Business Advisors

Small business specialists serving
Beds, Bucks & Herts

- Annual accounts
- Tax returns
- Self-employed
- Limited companies
- Small business specialist
- Sage Accounts expertise
- Prompt, personal service
- Value-for-money fees
- Free initial consultation

01525 220826

www.ewwallace.co.uk

HARMONY

Plus

EXCITING NEW UNISEX HAIR & BEAUTY CLINIC

3D - LIPO (INCH REDUCTION)
NON - SURGICAL FACE LIFT (CACI)
SKIN PEELS/SKIN TIGHTENING
MICRODERMABRASION
TEETH WHITENING
BIO SCULPTURE & OPI GEL NAILS
BROW/LASHES BAR
TANNING
SPA/PAMPER PARTIES
PRINCESS/PARTIES
HAIRDRESSING EXTENSIONS
BRIDAL HAIR/MAKEUP
MALE GROOMING

10% OFF FIRST VISIT

ON PRODUCTION OF THIS ADVERT

www.harmonybeautysanctuary.net

6A WALLACE DRIVE · EATON BRAY · LU6 2DF

01525 229111 / 07852 145053

IN BETWEEN LEIGHTON BUZZARD & DUNSTABLE



Here to take care of your mucky pup!

- Your local grooming service in Eaton Bray!
- 1-2-1 care for your dog
- NO cages!

Telephone: **07580 343 396**

Email: waggingwonderful@yahoo.co.uk



**FULLY QUALIFIED
ELECTRICAL ENGINEER**

Competitive prices and quality service

Available for all your domestic and
commercial electrical requirements

No job too small

Call Russell Sears:

07578 008567

01525 220008

17 Good Intent, Edlesborough

Eaton Bray Methodist Church

In July, in addition to a very happy service led by members of the congregation, we welcomed Fiona Arscott-Smith and Wallis Edwards to our pulpit. Fiona led our cafe worship in inspiring fashion, helping us to reflect on the Parable of the Sower while, a week later, Wallace Edwards gave us a typically thoughtful address in the wake of the spate of historic child abuse cases and asking us to be wary of judging by appearances.

On Sunday 27th July a large congregation participated in a delightful baptism ceremony when Aaron James Lyons of Eaton Bray was received into the church. The Rev Nigel Wright led the service, recalling in his sermon that Jesus asked parents to bring their children up to a life of serving others, just as Jesus himself did.

Our Cafe Fellowship on Aug 10th was a moving one, helping us to contemplate the terrible persecution of Christians and other minorities in Iraq. Martin Wallis, our preacher, challenged us to put ourselves in the shoes of those refugees and think seriously about our personal and joint responses to the current crises. On 17th August Joan Gregory,

in the context of holidays, led us to consider what we need to take with us on the journey of life. At the end of August, in preparation for the start of the church year, the Rev Julie Bradbury gave us an thought-provoking opportunity to refocus on the year ahead. We were reminded of the love and goodness at the heart of Christ's teaching and urged to take up our cross in his service. This was a joint service with other village churches. On two other Sundays in August we were made very welcome by our fellow worshippers at services in Edlesborough.

Date for your Diary: Cafe Community on Saturday 11th October 2014 11am – 1pm. You will be made very welcome if you come to join us for a cup of tea or coffee and /or a light lunch.

Eaton Bray Cricket Club 100 Club Winners

August 2014

£25 John Abraham No. 48
£10 Alan Fleet No. 38

September 2014

£25 Chris Timberlake No. 28
£10 Colin Campbell No. 70

Eaton Bray Cricket Club is kindly sponsored by Meadow Marquees, Houghton Insurance & Gastex Services

The Salvation Army, Booth Place, Eaton Bray Weekly Activities



Sunday

Footprints (Sunday School) 9.45-10.45am
Morning Worship 11am
Songs of Praise 4pm
(3rd Sunday of the month from May to Dec)

Tuesday

Coffee Morning
(alternate weeks) 10-11.30am
Music practices (all welcome) 7.30-9pm

Wednesday

Home League 2.30-3.30pm
(Ladies Mtg but all welcome)
Champions Challenge Club (term time)
(Ages 5-10 years) 5.45-6.45pm

Thursday

Parent and Toddler Group
(Term time) 9.30-11.30am
Haberdashers' night
2nd Thursday of month 7.45 pm
Ladies Fellowship
(Last week of month) 7.45pm

For further details please call Envoy Hilary
01525 222087 / 07932 057490

E: hilary.chadwick@salvationarmy.org.uk
W: www.salvationarmy.org.uk/eatonbray



Should you Bother with Loyalty Cards?

Jonathan Vernon Smith is the Sony Award winning mid-morning show presenter for BBC Three Counties Radio. During his consumer hour he helps listeners with their consumer problems and now shares his advice with you.

From the Tesco Clubcard to the Boots Advantage Card. The Morrison's miles card to the Sainsbury's Nectar card. All the big companies are doing it – encouraging us to be LOYAL to them and not to stray elsewhere. But which of these schemes should we bother with, and which should we completely ignore?

The first thing you need to understand about loyalty schemes is that they're NOT giving you anything for free. The shops that offer rewards for your loyalty, build the cost into their schemes. Ultimately their customers pay for it, but indirectly. Therefore it's up to you to be a savvy consumer to maximise the benefit.

They'll be furious at me for telling you this, but **DO NOT LET THE LOYALTY CARDS MAKE YOU LOYAL!** Just because you get points for shopping at a certain supermarket doesn't mean you're getting the best deal on your groceries. Keep your eyes open and be prepared to shop around, and maybe even do your shopping at a company that doesn't reward you in any way. When you empty the bags in your kitchen, you may still end up better off than you would have done with all your so called 'loyalty' points. Remember you can use cash in more shops than you can points! If you've saved cash, it means more.

That said, it's still worth having them. You'll notice I said 'them'. I did so

deliberately. My advice is to get THEM ALL! Either online or in-store, you should apply for ALL the (free) loyalty schemes in the shops you frequent. That way you can benefit both in price and in points. If you've researched and found the best price for a product you want to buy AND you benefit from getting loyalty points (that can eventually be redeemed for something meaningful), then you really have earned the right to consider yourself a 'SAVVY' consumer.

Some energy providers now provide points for certain loyalty cards. For example if you have your gas or electricity with E-On, you can link your account with your Tesco Clubcard and earn points every time you switch a light on. If you're already with E-On and feel they offer you the best price, then this is an added benefit, but as I mentioned earlier, these loyalty incentives are rarely enough to switch supplier based on loyalty points alone.

Most petrol stations now provide a loyalty scheme for fuel. For example you can earn Nectar points by filling up at a BP garage. That's fine if you were going to fill up at a BP station anyway, but please remember that it's still more important to shop around for the best price on fuel, rather than choosing a garage based on the loyalty points you can earn. In the end you're saving may be worth much more than the points are worth.

It's also worth noting that many credit cards offer a 'points' system to keep customers loyal to them. This can be very beneficial. I recently had a statement telling me that I have used my credit card so much in the last year that I'm entitled to 24 bottles of Pinot Grigio! Considering I practically bathe in the stuff, this made me do a little dance in

my kitchen. I would have purchased the items anyway, but by ensuring I paid for them on my credit card (whilst paying off the balance in full), I have earned myself a little treat!! Always do your research before you get a credit card. Make sure you look at the loyalty scheme they operate and ensure they reward buying things in shops you use the most.

Finally don't forget to use them and ensure you have a big purse or wallet. If you follow the advice above, you'll need one!



Edlesborough Parish Council News

Including Edlesborough, Dagnall and Northall

Collection of Allotment Rents



The collection of Allotment rents will take place on Saturday 4th October at Edlesborough Memorial Hall between 9am - 11:30am for The Green, Cow Lane and Northall Allotments.

Dagnall Rents will be collected on Sunday 5th October at the Dagnall Trading Hut between 9am - 11:30am.

In order for the Parish Council to save on administration expenses it would be very much appreciated if tenants could pay their rent on the specified date or arrange for them to be sent to the Clerk at 15 Summerleys, Edlesborough, LU6 2HR.

Please ensure rent is paid by 6th October 2014.

Streetlights

Several lights have been reported to the technician for repairs. Please remember to report any faulty streetlights to the Clerk (details below) NOT AVDC or Bucks CC.

Edlesborough Parish Council Meeting

This next meeting will be held at Northall Village Hall on Thursday 16th October 2014, commencing at 7:30pm. Minutes of previous meetings can be found on the website www.edlesborough-pc.gov.uk

Resurfacing Works

The resurfacing of High Street

Edlesborough will take place towards the end of October 2014. Details of any road closures will be published on the website and Facebook page as soon as they become available.



Public Meeting in Dagnall – Gadsden Walk future?

A public meeting will be held on Wednesday 8th October at 7.30 pm in Dagnall Village Hall to discuss the wishes of Dagnall residents regarding the future of the undeveloped/unopened footpath known as Gadsden Walk. A meeting notice and voting form to gauge resident's wishes is included with this copy of Focus (for Dagnall residents only).

Contact Information

Clerk to Edlesborough Parish Council:

Clerk: Penny Pataky 01525 229358

Email: clerk@edlesborough-pc.gov.uk

Manager of Edlesborough Memorial Hall, Pavilion, Playground & Green:

Penny Pataky 01525 229358

Email: manager@edlesborough-pc.gov.uk

Responsible Finance Officer/Planning to Edlesborough Parish Council:

Lin Sargeant: 01525 220859

Email: rfo@edlesborough-pc.gov.uk

Website: www.edlesborough-pc.gov.uk

Eaton Bray Parish Council

Highlights of the Minutes

Meeting of Eaton Bray Parish Council

Held on Monday 7th July 2014 from 7:30pm at the Coffee Tavern

Central Beds Council (CBC)

Website: www.centralbedfordshire.gov.uk

Customer Services: 0300 300 8302 /

Email: customers@centralbedfordshire.gov.uk

A detailed list of services provided by CBC can be found by visiting:

<http://www.eatonbray.com/parish-council/files/central-beds-a-to-z-of-services-2014.pdf>

Bedfordshire Police:

Year to Date Crime and Detections

Crime Type	RECORDED CRIME		
	01/06/13 to 30/06/13	01/06/14 to 30/06/14	% Change
Sexual Offences	0	0	n/a
Domestic Burglary	1	1	0
Burglary Other	0	2	+200.0%
Vehicle Crime	0	2	+200.0%
Other Theft	0	3	+300.0%
Criminal Damage	1	0	-100.0%
Drugs	0	0	n/a
Other Notifiable Offences	0	0	n/a
Total	2	8	+6

Response Grade	ANTI-SOCIAL BEHAVIOUR		
	01/04/13 to 01/07/13	01/04/14 to 01/07/14	% Change
Anti-Social Behaviour	17	14	-17.6%
Total	17	14	-17.6%

Advertising on Parish Land

NO advertising on Parish Council land without prior consent from Eaton Bray Parish Council.

Village Drains

Please note the Parish Council has no power with regard to drainage but will write to the drainage board expressing the concerns raised; please note individuals need to complain direct to the drainage board on 01234 767995 / email contact@idbs.org.uk .

Public Footpath/Northall Road

A proposal was forwarded to the Parish Council by Central Beds Council regarding

the creation of a public path from Chiltern View, along Northall Road, into the village of Eaton Bray. The Parish Council fully supports this proposal.

Village Beautification

If you live in the parish and are interested in the beautification of the village then please contact Eaton Bray Parish Council and join the EB Bloomers.



Speedwatch

The Parish Council are looking at putting together a speed watch group to monitor traffic speeds on the parish roads and are looking for volunteers. If interested please contact Cllr. Mark Tomkins on 07810 753878, between 9am-8pm or email councillormarktomkins@gmail.com .

Future Eaton Bray Parish Council Meeting Date

Parish Council Meeting: Monday 6th October 2014 from 7:30pm at The Coffee Tavern (1st floor)

Parish Council Website: www.ebpc.co.uk

For full detailed copy of the minutes for Eaton Bray Parish Council please visit the Parish Council website.

A hard copy of minutes can also be viewed on the Parish Council's notice board at The Coffee Tavern.

INFORMATION/CONTACTS

Due to repeated requests to the Parish Council office for useful contact information, we list relevant details. Please keep a record of this information for future reference.

Eaton Bray Parish Council: Parish Council website: www.ebpc.co.uk

➤ **Parish Council Contacts**
Parish Clerk: Telephone/Fax: 01525 221464 – email: clerk@ebpc.co.uk
For full details visit the Eaton Bray Parish Council website.

➤ **Parish Council Minutes**
For full detailed copy of minutes for Eaton Bray Parish Council, please visit the Parish Council website. A hard copy of the most recent minutes can also be viewed on the Parish Council’s notice board at The Coffee Tavern.

➤ **Parish Council Annual Return**
A summary of the council’s Annual Returns from 2007 onwards are available on the Parish Council website.
Parish Council Business Matters can be viewed on the Parish Council website.

Bedfordshire Police

General Assistance/recommended number: **101** - Emergency: **999**
Text message: **07786 200011**
Website: Local Team/Leighton Rural: <http://www.police.uk/bedfordshire/69/>

Central Bedfordshire Council

➤ **Customer Services**
Phone lines are open Monday to Thursday 0830-1730 and Friday 0830-1630: 0300 300 8302
Email: customers@centralbedfordshire.gov.uk

List of A-Z Services from Central Beds Council: <http://www.eatonbray.com/parish-council/files/central-beds-a-to-z-of-services-2014.pdf>

➤ **Planning Applications**
There is a searchable planning application list on the Central Bedfordshire Council website: www.centralbedfordshire.gov.uk
Recommendations by the Parish Council on monthly applications can be viewed on the full detailed minutes of Parish Council Meetings.

➤ **Bin Collections & Recycling**
Please visit the Central Bedfordshire

Council website: <http://www.centralbedfordshire.gov.uk/environment/recycling-rubbish-and-waste/default.aspx>
Email: customers@centralbedfordshire.gov.uk or call 0300 300 8302

➤ **Fly Tipping/Street Care/Cleaning & Littering Services**
Please visit the Central Bedfordshire Council website.

<http://www.centralbedfordshire.gov.uk/environment/recycling-rubbish-and-waste/street-care-recycling-rubbish-waste.aspx>
Email: customers@centralbedfordshire.gov.uk or call 0300 300 8302

➤ **Noise Pollution**
Please visit the Central Bedfordshire Council website:
<http://www.centralbedfordshire.gov.uk/environment/pollution/pollution-complaints-noise.aspx>

Email: customers@centralbedfordshire.gov.uk or call 0300 300 8302

➤ **Highways & Roads**
Please visit the Central Bedfordshire Council website:
<http://www.centralbedfordshire.gov.uk/travelling/roads-safety-and-highways/default.aspx>

Email: highways@centralbedfordshire.gov.uk or call 0300 300 8302

Pot Holes/Broken Street Light/Faulty Traffic Signals: Please report using the link above, however if you believe the problem is dangerous and could cause an emergency situation, please telephone the 24 hour phone line (0300 300 8049) to report the fault instead.

✍ Heidi Head, Parish Clerk & RFO
Email: clerk@ebpc.co.uk - Telephone/Fax: 01525 221464 - Website: www.ebpc.co.uk
Office Hours: Tuesday/Thursday/Friday 09:30-13:30hrs [messages can be left on answerphone]

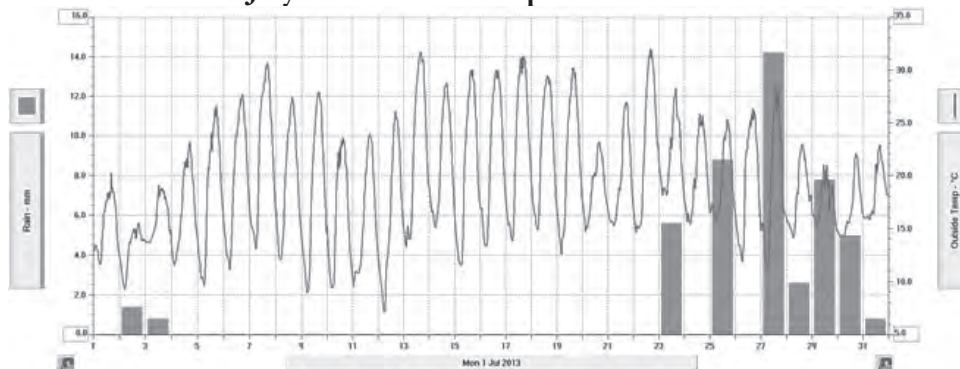
Dagnall Weather Station (AONB)

Weather Conditions for July 2014

Elevation: 450 ft - Latitude: 51° 50' 13" North - Longitude: 0° 33' 34" West
 Temperatures for **July** were above average mainly due to warm days with 16 days having temperatures above 25°C with a maximum of 30.2°C. Although rain was generally across the south-east and East Anglia, here in Dagnall we seem to miss every rain cloud going, there was only 5 days when we had more than 2mm of rain totalling 43.6mm that's 30% down on the 6 year average.

	High	Date/Time	Low	Date/Time
Temperature	30.2°C	26 July 16.00	8.3°C	8 July 03.30
Mean Temp	18.7°C	Dominant Wind:	N	
Humidity:	97%	7 - 8 July 06.30	40%	24 July 16.30
Barometer:	1022.8 hPa	22 July 23.00	997.5hPa	5 July 06.30
Wind Speed	29mph SSW	4 July 14.00	Months avg.	4.3 mph
Wettest Day	18 July		17.40mm	Ins 0.685
Monthly Rain:	Total	July	43.6 mm	Ins 1.716

July - Plots shows Temperature & Rain

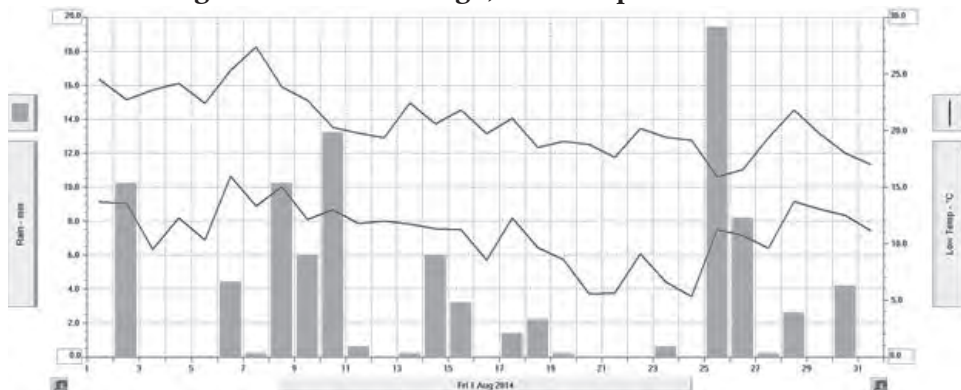


Weather Conditions for August 2014

August: was an unsettled month with some large daily rainfall totals with the bank holiday Monday 24th being the wettest day with 19.41mm. The month had 29% more rain than the 6 year average. The second half of the month saw some cool days and nights with 3 nights getting close to 5°C. The remaining days were unsettled resulting in a cool and wet month overall.

	High	Date/Time	Low	Date/Time
Temperature	27.4°C	7 August 17.00	5.3°C	24 August 06.00
Mean Temp	15.6°C	Dominant Wind:	W	
Humidity:	97%	28 August 06.00	40%	7 August 17.30
Barometer:	1020.5 hPa	16 August 09.00	990.2 hPa	10 August 13.00
Wind Speed	40mph SSE	10 August 14.00	Months avg.	5.7 mph
Wettest Day	25 August		19.41 mm	0.764 ins
Monthly Rain:	Total	August	93.2 mm	3.669 ins
Yearly Rain:	Total	8 Months	646.6 mm	25.456 ins

August - Plots shows High, Low Temperature & Rain



For weather data 24 hours a day, updated every 15 mins, visit: www.dagnallweather.co.uk and http://bit.ly/weather_dagnall this site forecast and much more.

If anyone has a question, comment or wishes to contact me please email: david@dagnallweather.co.uk or telephone: 01442 843883.

Edlesbray Leisure Fellowship (ELF)

Hello Everyone,

The year is fast fading away and the flowers are beginning to lose their beauty. We hope that people have enjoyed any holidays or outings over the last couple of months.

The walk on the 28th July was led by Vic. It started in Frenchs Avenue Dunstable, then via Sewell Lane and village, crossing the disused railway track to Totternhoe Nature Reserve and the Knolls. They returned to the start admiring the many butterflies on the Knolls. The walk was around 4.5 miles. The group ended with refreshments at The Cross Keys, Totternhoe. Thanks to Vic for an enjoyable walk.

Viv led a short walk for those who were unable to join in the main one. The group walked part of the way round College Lake in warm weather. Thanks to Viv for driving the group there and for returning them to their respective abodes.

The lunch out on July 31st at The Plough, Wingfield was, as usual, a pleasant venue with good food.

Thanks go to Norman for a very good outing to The Black Country Museum. Everyone enjoyed a good day doing activities they chose and ended having lunch together.

Alan and Val held the usual annual Cream Tea on August 21st in their garden. After a showery start, the weather changed for the better and everyone enjoyed the afternoon. Thanks to Alan and Val for the use of their garden and to the helpers.

No arrangements have been made yet for our next Lunch out on October 9th. Details will be posted in the North Porch of Eaton Bray Church.

Also details of the outing to be arranged by Graham for a visit to the RAF Museum at Hendon will be posted in the North Porch of Eaton Bray Church.

OCTOBER DATES

- Thurs 9th. Lunch out
- Mon 27th Walk from Eaton Bray Church 10am
- Thur 30th Visit to RAF Hendon

Salvation Sound



“Wind’s a gust, coat’s a must
We’re in for rain, I trust,
With swirling leaves on whipped up breeze,
And signs of bareness on the trees.
Chilly days, sun splintered rays,
Skies above all black and greys.
Nature’s mood in changing phase.
It’s Autumn time again.”

The name October comes from the Roman God ‘Octo’ which means eight. The Romans left the name of the month as it was – even though it was the tenth month. Our Anglo Saxon ancestors had alternative names for it. They called October ‘Win-Monath’ or wine-making month, and Winterfylleth; meaning being winterfalls, as they thought that winter began with October’s new moon.

Somehow there seems to be an almost magical feel in the air when mist swirls silently across the fields and hedgerows until the sun’s soft rising dispels it. Autumn, no one summed up that turning point in our year better than Keat’s when he wrote those enduring words: “Seasons of mists and mellow fruitfulness.” It is difficult to predict when summer ends and autumn really begins. Is it when tree leaves change colour? Not really, for the maple produces it’s Autumn shades before October starts, and young oak and beech trees often sprout their old leaves right into next spring until the new buds are almost ready to break open.

October produces an abundant ‘wild’ harvest; cast your mind back to your childhood, when you probably, like me, went collecting chestnuts, and conkers, hips from the wild roses, elderberries, sloes, bullace, and crab apples and haze nuts. All these “goodies” helped in filling the larder- not conkers but they had to be baked in Mum’s oven to make good ‘sixers’!

Spiders we are amongst the creatures that I like, but damp mornings their dew spangled webs can be seem almost everywhere – they appear on the lawns, on fences, shrubs and trees, the corners of windows, not to mention car door mirrors, and are especially beautiful if touched with frost.

“If you want to live and thrive let the spider run and

stay alive.”
October was a special a month, long ago. It was important for fairs were then held. One of the most famous was Nottingham Goose Fair; when hundreds of birds, along with geese were taken to the city from all over the country. The geese were driven there in flocks; before their long walk their feet were painted to harden them. Most towns and cities held fairs at which surplus stock was sold before winter set in, so saving on winter feeding costs. Hiring, also took place; those who needed work would go along and wait in line to be picked; - then the bargain would be struck, with the bailiff in attendance, and the worker would be given a few coppers in advance wages, which would then be used to enjoy the entertainments of the coconut shies, candy-stalls, the pie sellers and the like.

Nature warns us that soon the long, cold, hard winter will set in. The trees will be denuded and only here and there will an extra hardy bush remain evergreen. How rarely do we take time to ponder the wonders of creation. We take for granted the gloom of winter will be broken by a burst of sunshine that will herald spring and newness of life again. Sunshine lights up a rather dreary world and brings hope. When thoughts such as these invade my mind I think of God’s love manifest in nature. Birds chirping fond farewells, the last of the butterflies can be seen, and bumblebees can be found lazing on the garden wall or droning between late flowers, the sound of the robin singing – Our Lord watches over the sparrow and the lily, and the Lord cares for you.

Ecclesiastes ch3 v1 says “to everything there is a season and a time for every purpose under the heaven.”

“Our years are like the shadows
On sunny hills they lie,
Our grasses in the meadows
That blossom but to die:
A sleep a dream, a story
By strangers quickly told,
An unremaining glory
Of things that soon are old.”

✍Maureen



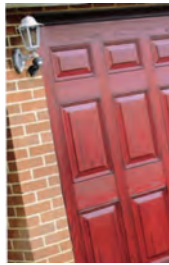


Premier Garage Doors & Gates



Quality Garage Doors

- ✓ Superb choice of designs in metal, wood and fibreglass
- ✓ Any size door made to your requirements
- ✓ Large selection of spares & fast repair service available
- ✓ New or existing doors converted to automatic
- ✓ Professionally fitted by own expert craftsmen
- ✓ Prompt free estimates & advice
- ✓ We cover all areas



(EST 1984)

DIY kits available
Insurance work welcome
Council approved
Remote control gates also available



Unit 7, Sparrow Hall Farm, Leighton Road, Edlesborough LU6 2ES

01525 220212

www.premiergaragedoors.co.uk

THE APPLIANCE, FLOORING & BIKE STORE @ JANES

**APPLIANCES
& TV'S**

**SAME DAY
DELIVERY &
INSTALLATION
ON STOCK ITEMS**

**WE WILL BE
COMPETITIVE
ON PRICES**

**WE TAKE YOUR
OLD ITEM AWAY**



FLOORING

Borrow our flooring samples
We measure and quote
We uplift & dispose old flooring
We have short lead times
We will look after you



**Bissell Carpet
Cleaner HIRE from
24hrs £19.99**



**Karndeans
Designflooring**



BROCKWAY
WIMBORNE

01525 220208

**Vacuum - Lawn Mower & Bike
Service & Repairs Available**

4-6 High Street Edlesborough LU6 2HS